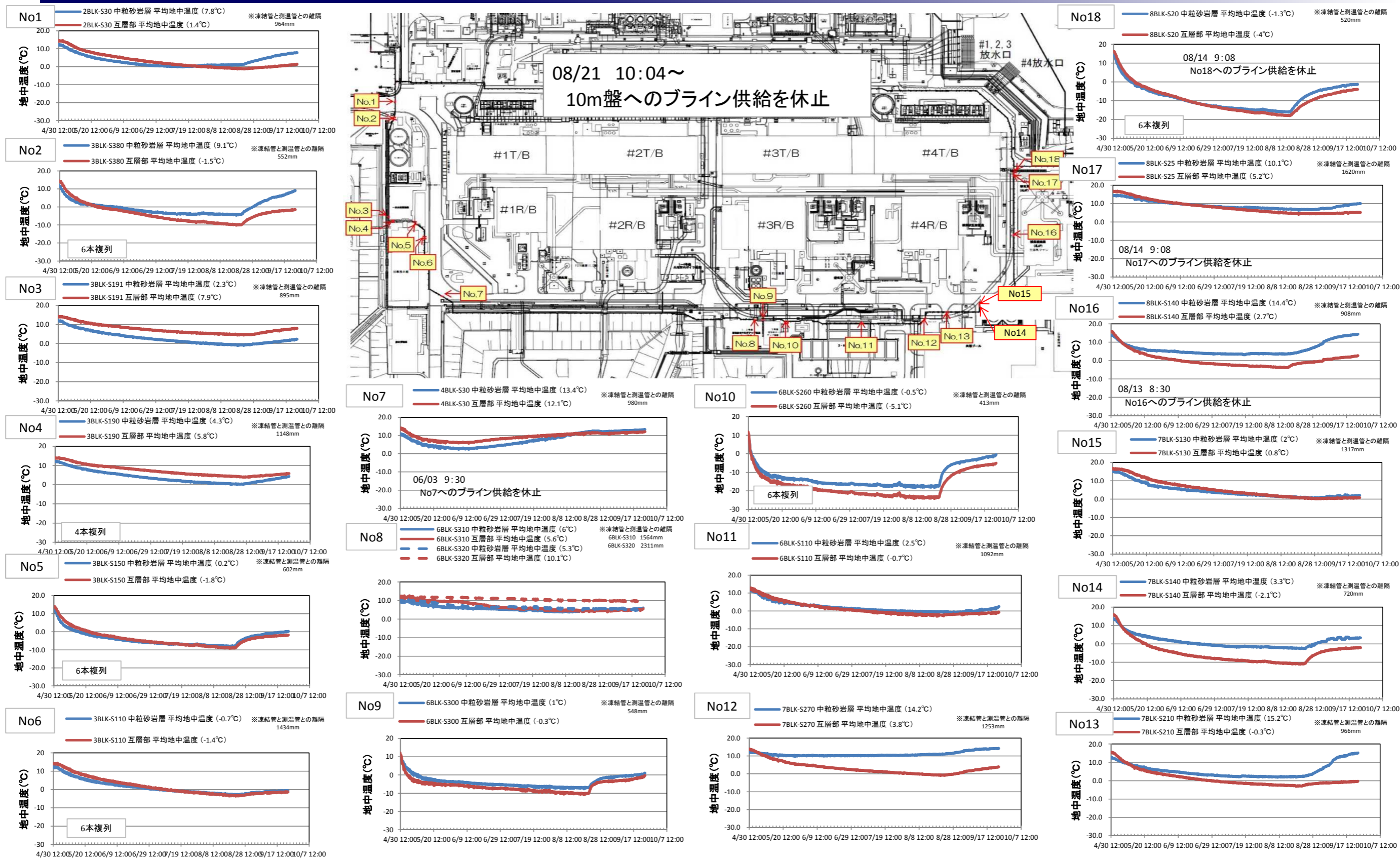
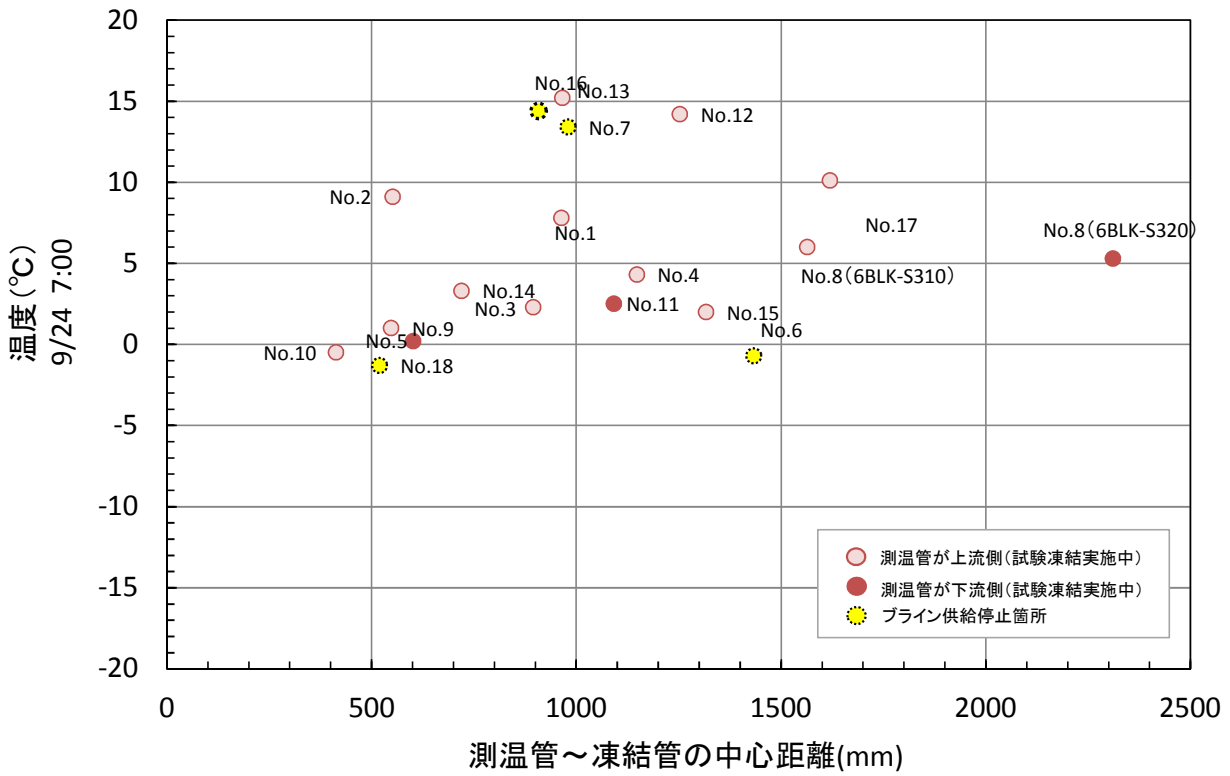


福島第一原子力発電所 陸側遮水壁 試験凍結の状況について : 地中温度(測温管温度)

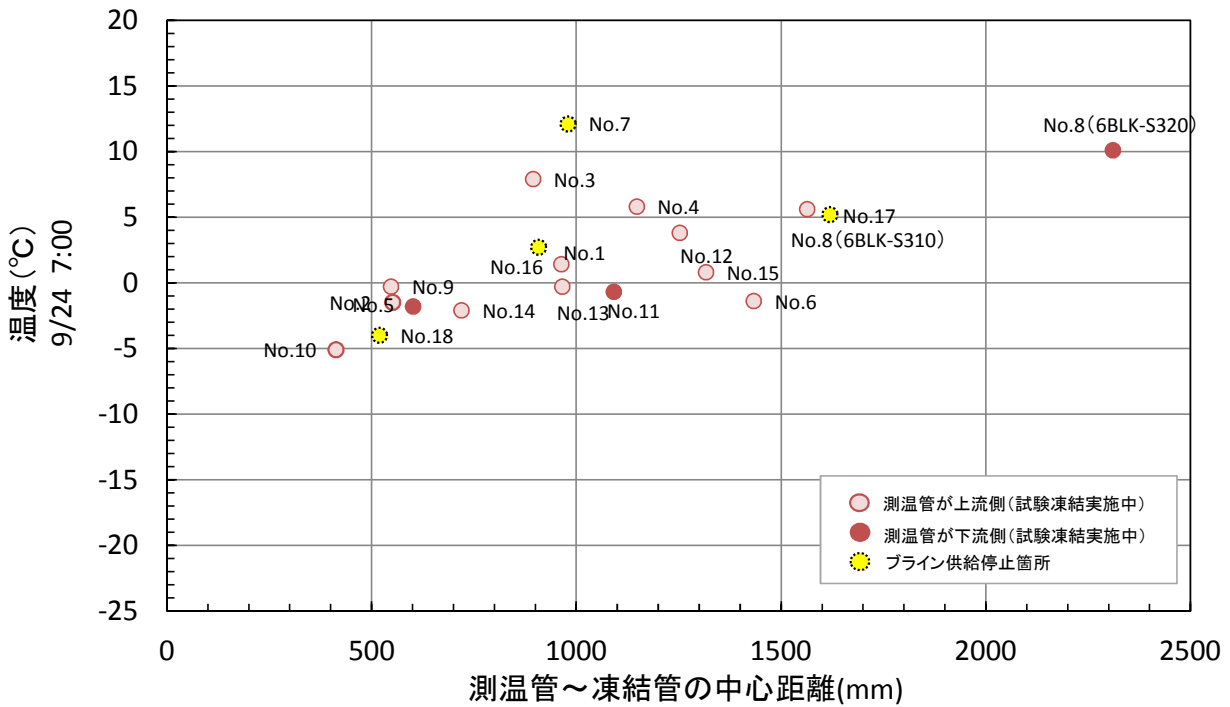


注1) 中粒砂岩層の平均地中温度: 地表~GL-2mと第1泥質部境界付近を除く1mピッチで計測されている測温管温度の平均値  
注2) 互層部の平均地中温度: 互層部上下の層境界付近を除く、1mピッチで計測されている測温管温度の平均値

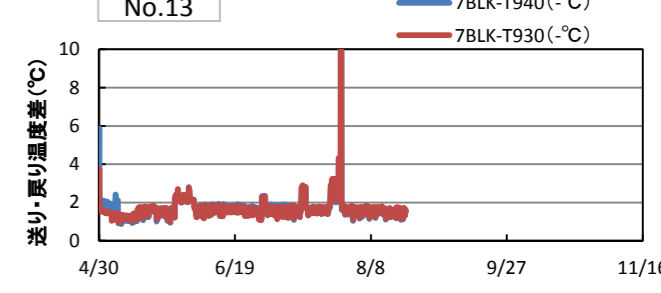
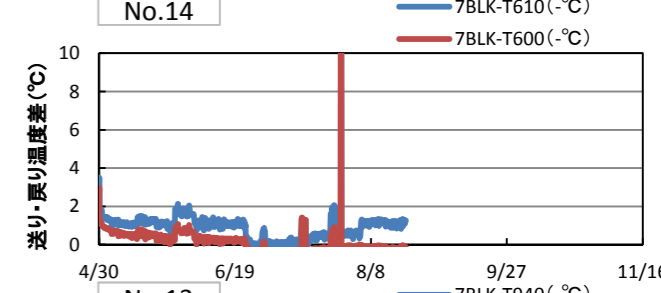
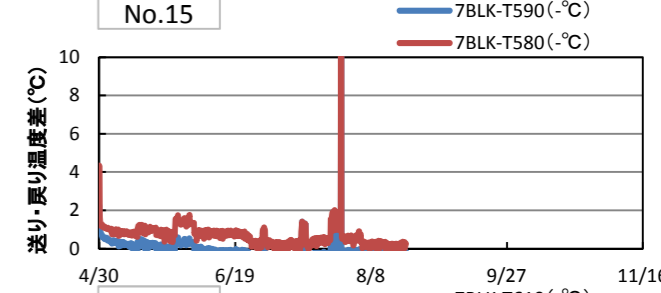
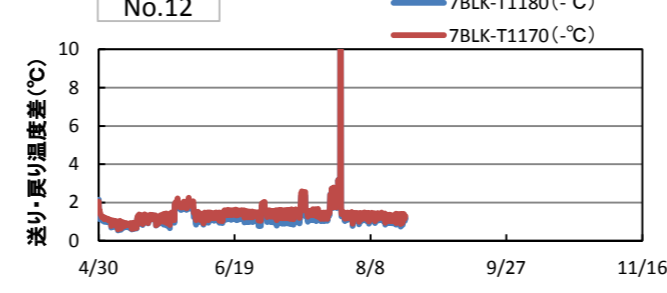
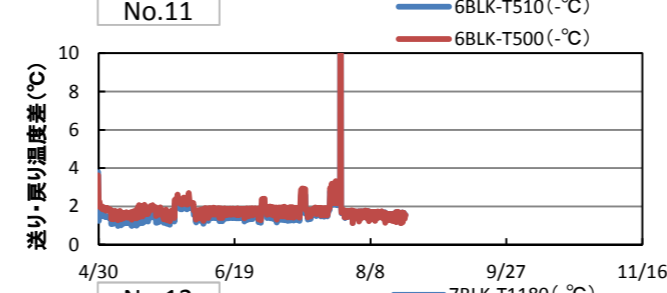
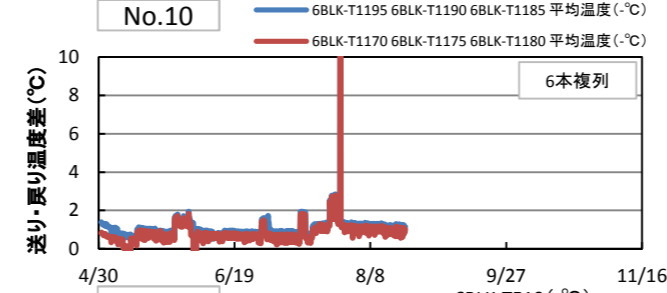
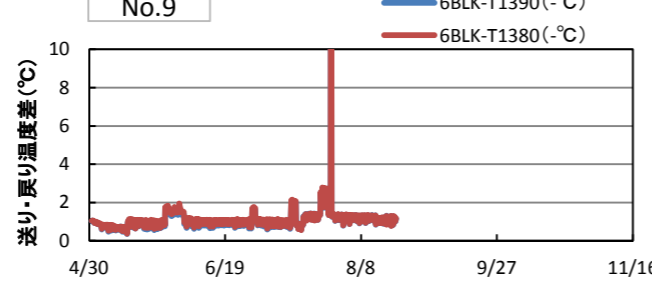
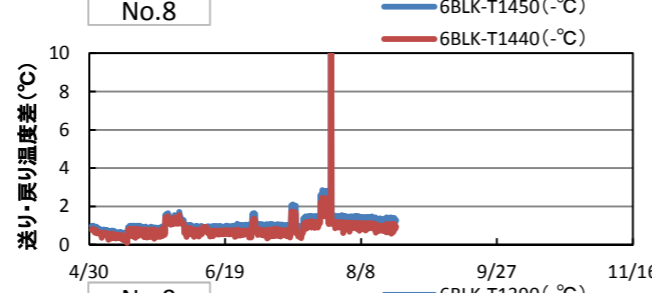
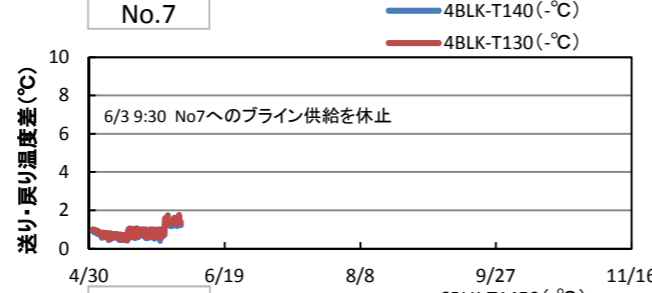
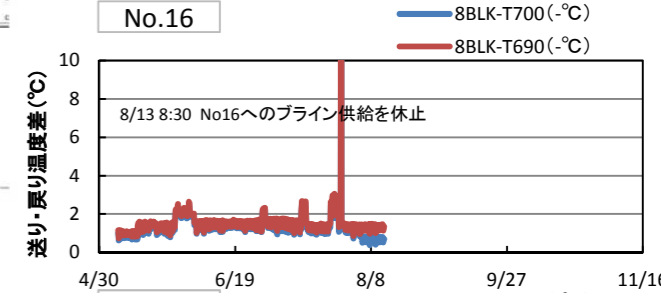
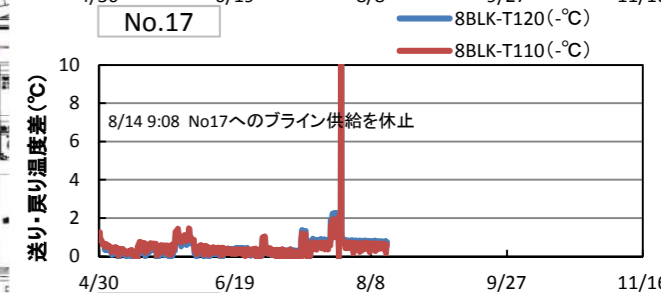
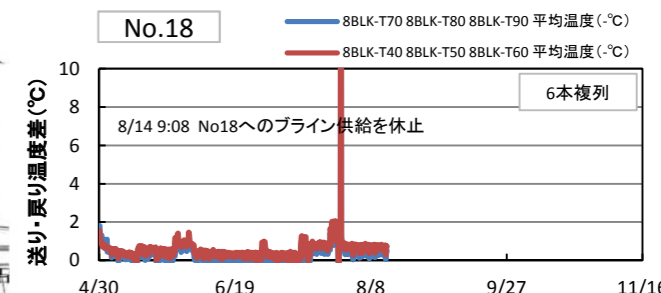
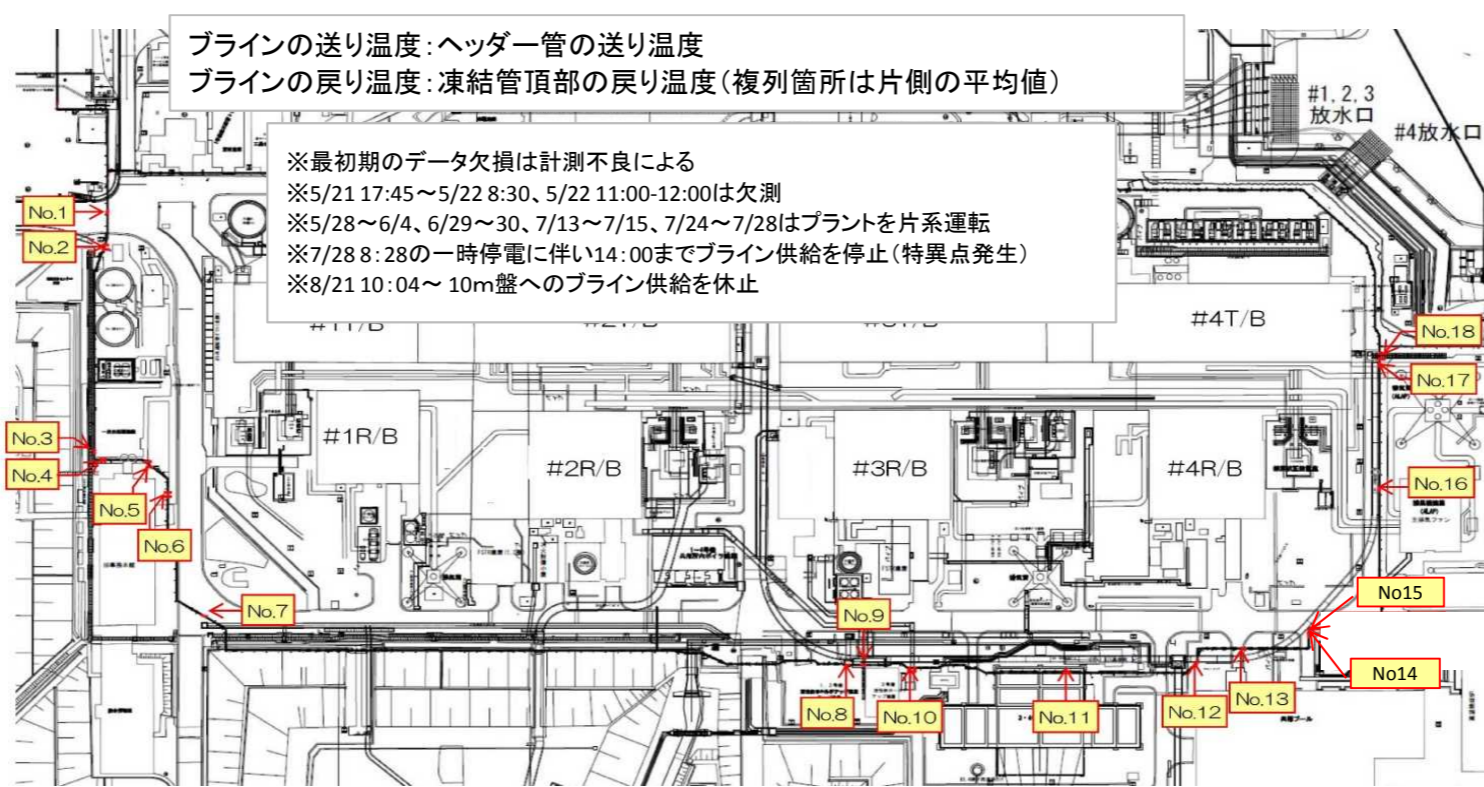
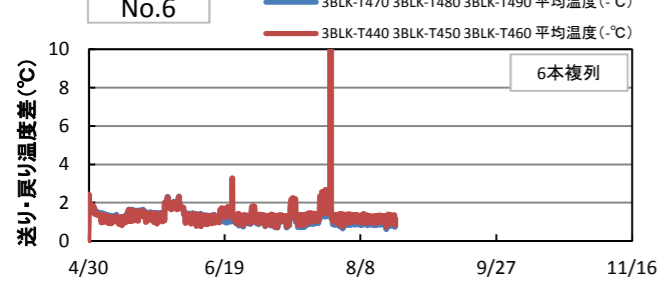
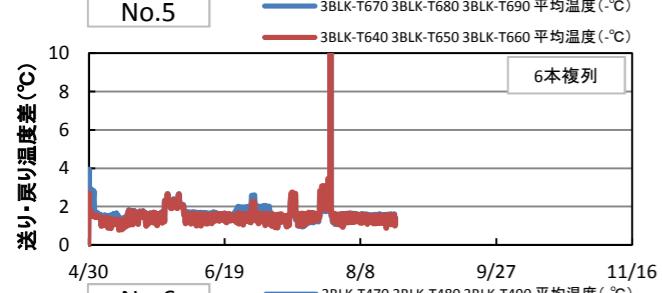
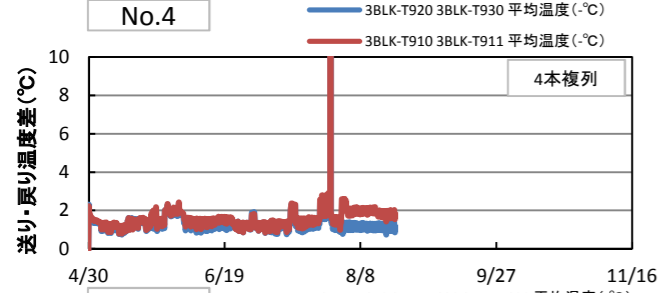
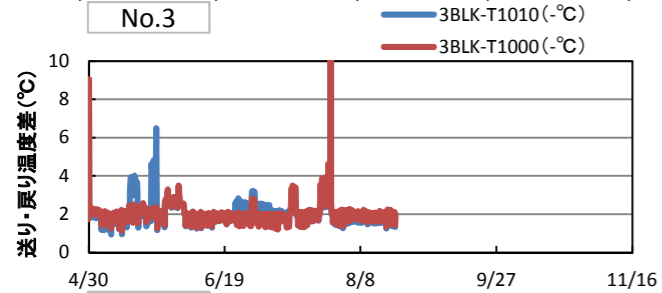
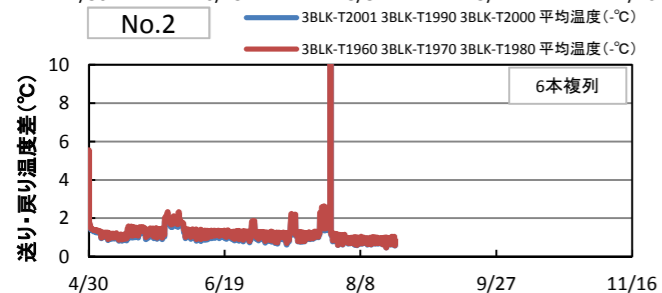
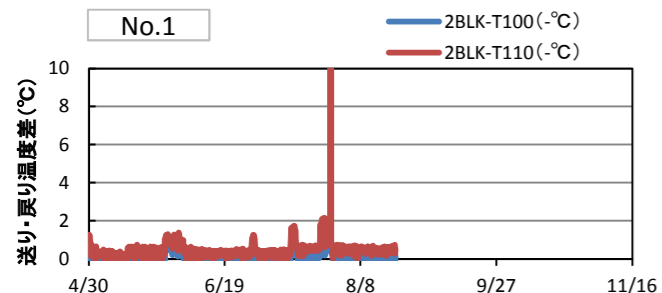
### 中粒砂岩層



### 互層部



# 福島第一原子力発電所 陸側遮水壁 試験凍結の状況について : プライン送り戻り温度差



8/14 9:08 No.18へのプライン供給を休止  
 8/14 9:08 No.17へのプライン供給を休止  
 8/13 8:30 No.16へのプライン供給を休止  
 6/3 9:30 No.7へのプライン供給を休止