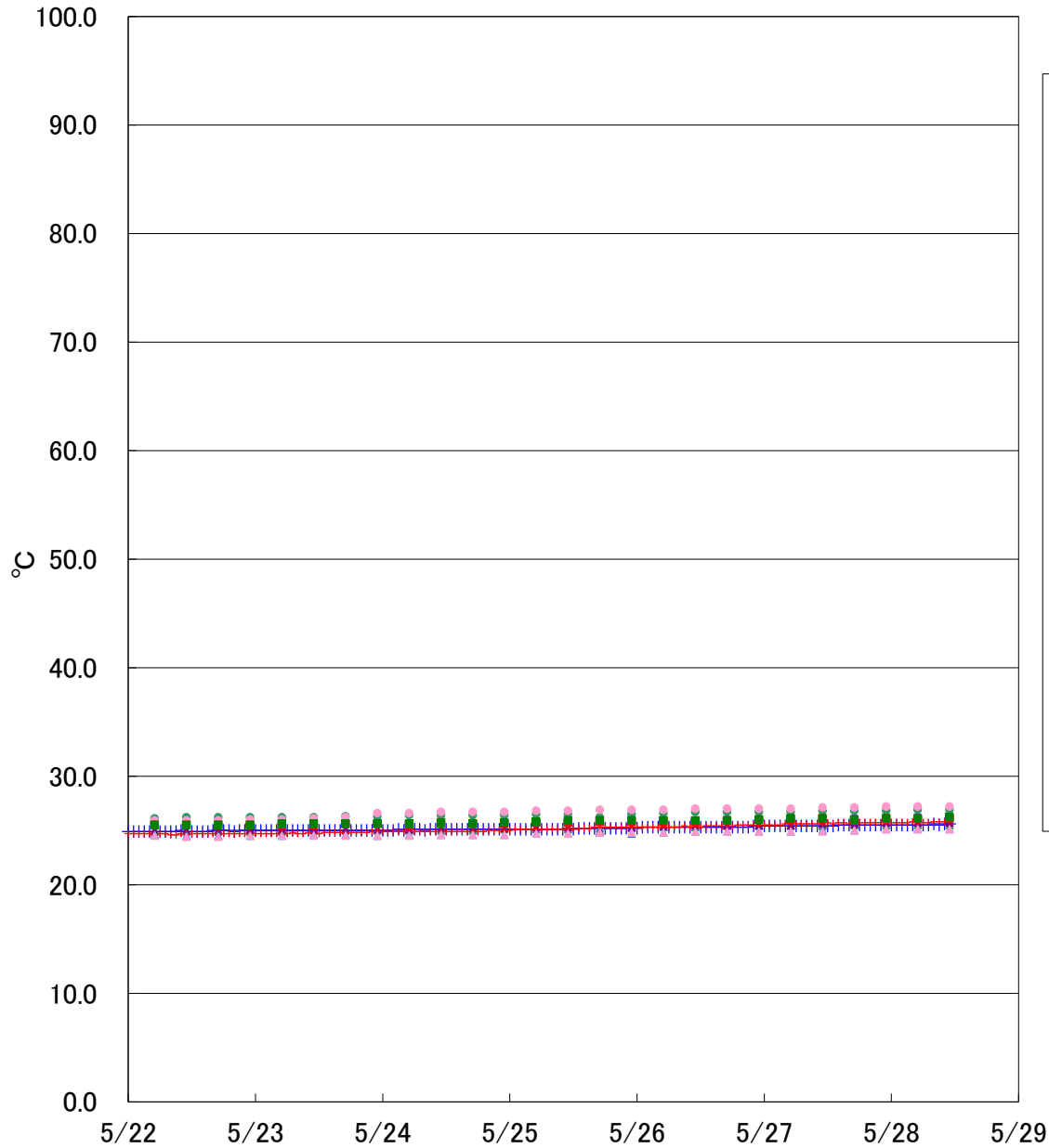


# 福島第一原子力発電所2号機 温度に関するパラメータ



- + VESSEL WALL ABOVE BOTTOM HEAD (TE-2-3-69H3)
- RETURN AIR DRYWELL COOLER (TE-16-114B)
- RETURN AIR DRYWELL COOLER (TE-16-114C)
- RETURN AIR DRYWELL COOLER (TE-16-114E)
- ▲ SUPPLY AIR D/W COOLER HVH2-16B (TE-16-114G#1)
- ▲ SUPPLY AIR D/W COOLER HVH2-16D (TE-16-114J#1)
- + RPV温度 (TE-2-3-69R)
- PCV温度 (TE-16-007)
- PCV温度 (TE-16-008)
- ▲ SUPPLY AIR D/W COOLER HVH2-16C (TE-16-114H#2)
- ▲ SUPPLY AIR D/W COOLER HVH2-16E (TE-16-114K#2)