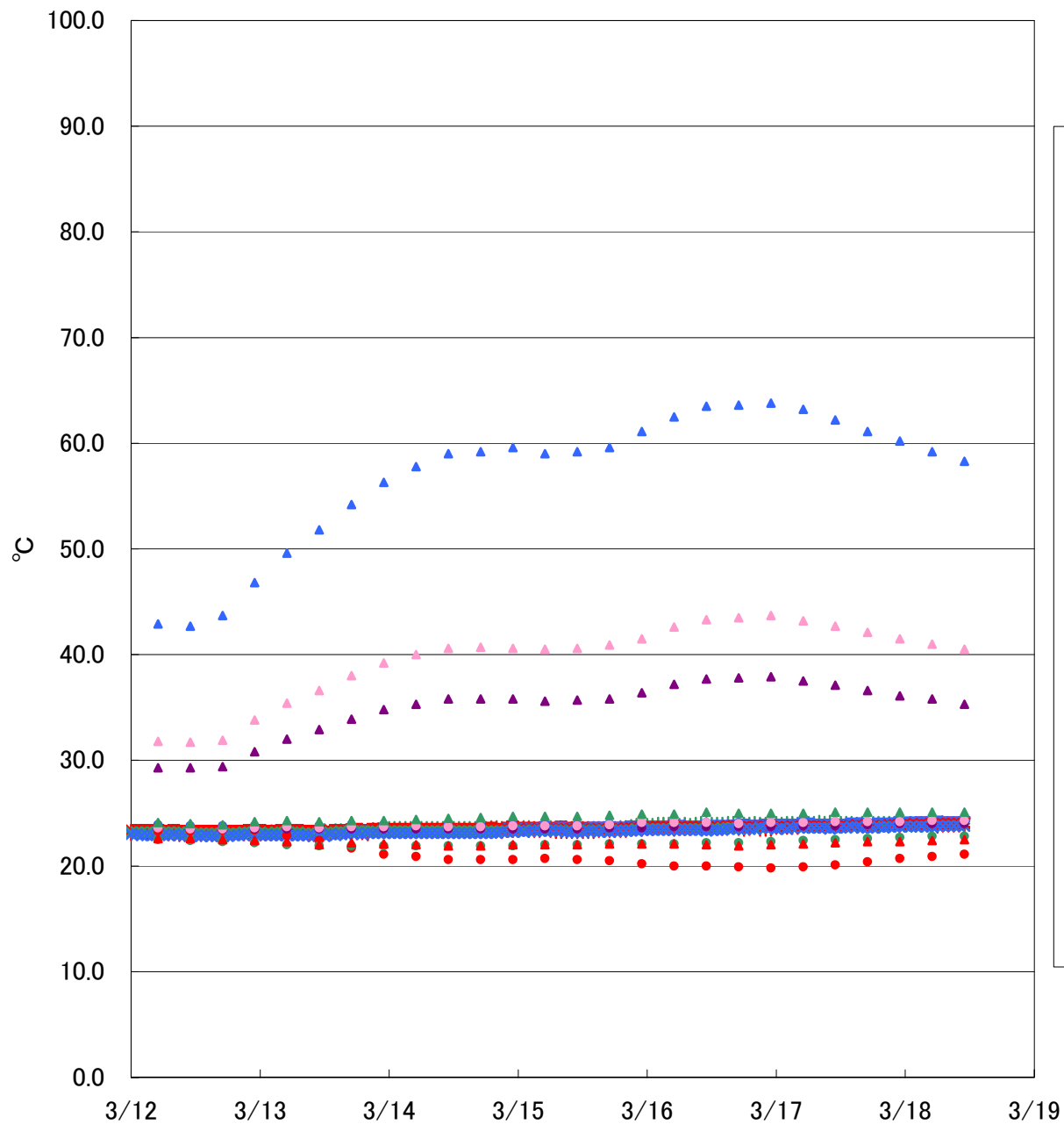


福島第一原子力発電所1号機 温度に関するパラメータ



- + vessel bottom head(TE-263-69L1)
- + vessel bottom head(TE-263-69L2)
- 原子炉skirt joint上部(TE-263-69H1)
- 原子炉skirt joint上部(TE-263-69H3)
- × vessel down comer(TE-263-69G1)
- × vessel down comer(TE-263-69G2)
- × vessel down comer(TE-263-69G3)
- HVH-12A return air(TE-1625A)
- HVH-12B return air(TE-1625B)
- HVH-12C return air(TE-1625C)
- HVH-12D return air(TE-1625D)
- HVH-12E return air(TE-1625E)
- ▲ HVH-12A supply air(TE-1625F)
- ▲ HVH-12B supply air(TE-1625G)
- ▲ HVH-12C supply air(TE-1625H)
- ▲ HVH-12D supply air(TE-1625J)
- ▲ HVH-12E supply air(TE-1625K)