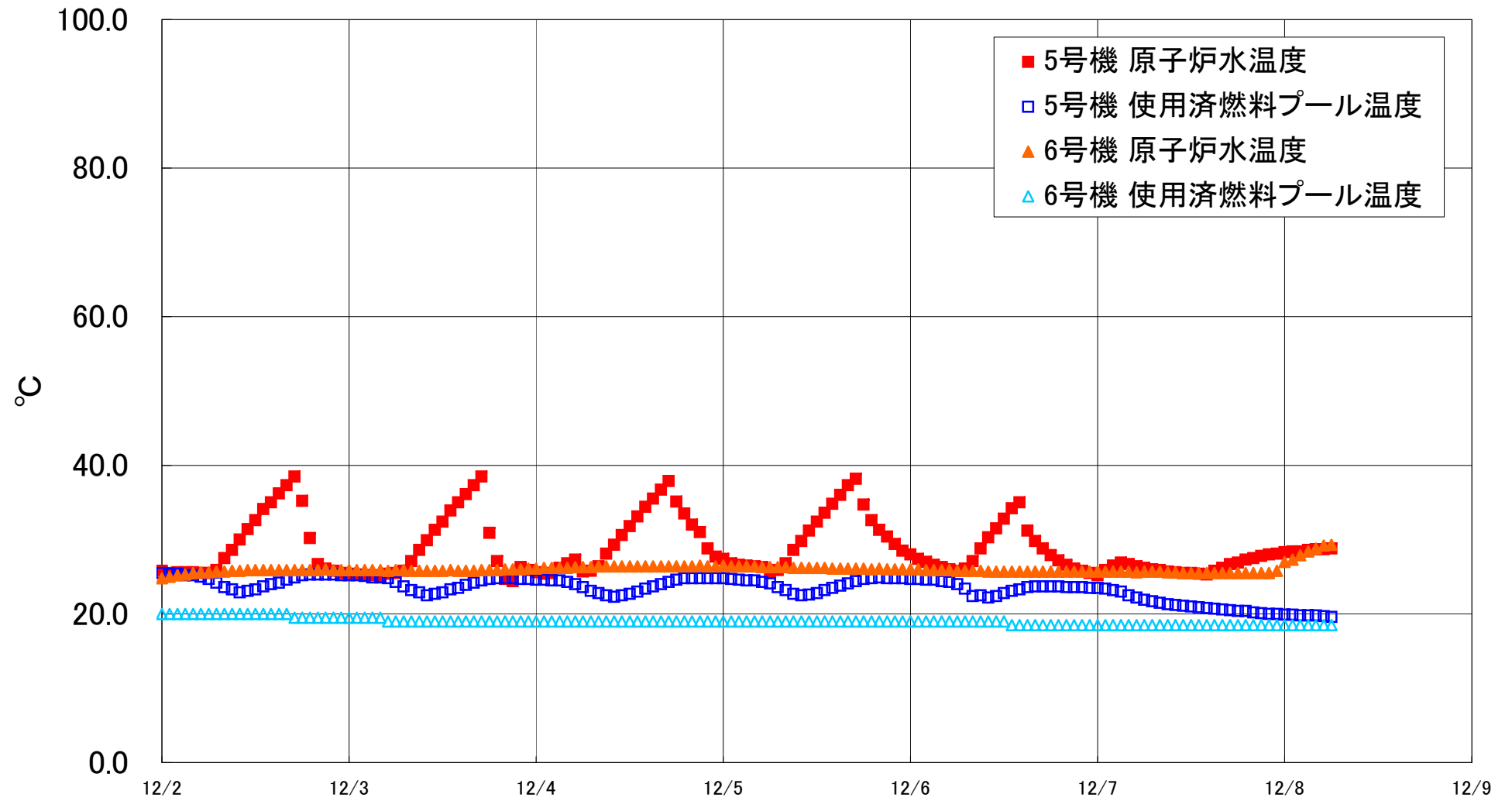


福島第一原子力発電所 5・6号機 原子炉水温度、使用済燃料プール温度推移



福島第一原子力発電所 5・6号機 原子炉水温度・使用済燃料プール温度

| 日時         | 5号機 原子炉水温度 | 5号機 使用済燃料プール温度 | 6号機 原子炉水温度 | 6号機 使用済燃料プール温度 |
|------------|------------|----------------|------------|----------------|
| 12/5 14:00 | 34.8       | 23.5           | 26.1       | 19.0           |
| 12/5 15:00 | 36.0       | 23.8           | 26.1       | 19.0           |
| 12/5 16:00 | 37.3       | 24.1           | 26.1       | 19.0           |
| 12/5 17:00 | 38.2       | 24.4           | 26.1       | 19.0           |
| 12/5 18:00 | 34.7       | 24.7           | 26.1       | 19.0           |
| 12/5 19:00 | 32.6       | 24.8           | 26.0       | 19.0           |
| 12/5 20:00 | 31.3       | 24.9           | 26.1       | 19.0           |
| 12/5 21:00 | 30.4       | 24.8           | 26.0       | 19.0           |
| 12/5 22:00 | 29.4       | 24.8           | 26.0       | 19.0           |
| 12/5 23:00 | 28.5       | 24.8           | 26.0       | 19.0           |
| 12/6 0:00  | 28.0       | 24.7           | 26.0       | 19.0           |
| 12/6 1:00  | 27.4       | 24.7           | 26.0       | 19.0           |
| 12/6 2:00  | 27.0       | 24.6           | 25.9       | 19.0           |
| 12/6 3:00  | 26.6       | 24.6           | 25.9       | 19.0           |
| 12/6 4:00  | 26.3       | 24.4           | 25.9       | 19.0           |
| 12/6 5:00  | 26.0       | 24.3           | 25.9       | 19.0           |
| 12/6 6:00  | 25.8       | 24.0           | 25.8       | 19.0           |
| 12/6 7:00  | 26.1       | 23.4           | 25.8       | 19.0           |
| 12/6 8:00  | 27.1       | 22.4           | 25.8       | 19.0           |
| 12/6 9:00  | 28.8       | 22.5           | 25.8       | 19.0           |
| 12/6 10:00 | 30.3       | 22.2           | 25.7       | 19.0           |
| 12/6 11:00 | 31.5       | 22.4           | 25.7       | 19.0           |
| 12/6 12:00 | 32.8       | 22.8           | 25.7       | 19.0           |
| 12/6 13:00 | 34.2       | 23.1           | 25.7       | 18.5           |
| 12/6 14:00 | 35.0       | 23.3           | 25.7       | 18.5           |
| 12/6 15:00 | 31.2       | 23.6           | 25.7       | 18.5           |
| 12/6 16:00 | 29.8       | 23.7           | 25.7       | 18.5           |
| 12/6 17:00 | 28.8       | 23.7           | 25.7       | 18.5           |
| 12/6 18:00 | 27.9       | 23.7           | 25.7       | 18.5           |
| 12/6 19:00 | 27.2       | 23.7           | 25.7       | 18.5           |
| 12/6 20:00 | 26.6       | 23.6           | 25.7       | 18.5           |
| 12/6 21:00 | 26.1       | 23.6           | 25.7       | 18.5           |
| 12/6 22:00 | 25.8       | 23.6           | 25.7       | 18.5           |
| 12/6 23:00 | 25.5       | 23.5           | 25.7       | 18.5           |
| 12/7 0:00  | 25.2       | 23.5           | 25.7       | 18.5           |
| 12/7 1:00  | 25.9       | 23.4           | 25.7       | 18.5           |
| 12/7 2:00  | 26.5       | 23.2           | 25.7       | 18.5           |
| 12/7 3:00  | 26.9       | 23.0           | 25.7       | 18.5           |
| 12/7 4:00  | 26.7       | 22.5           | 25.7       | 18.5           |
| 12/7 5:00  | 26.4       | 22.2           | 25.6       | 18.5           |
| 12/7 6:00  | 26.2       | 21.9           | 25.7       | 18.5           |
| 12/7 7:00  | 26.0       | 21.7           | 25.7       | 18.5           |
| 12/7 8:00  | 25.9       | 21.5           | 25.7       | 18.5           |
| 12/7 9:00  | 25.7       | 21.3           | 25.6       | 18.5           |
| 12/7 10:00 | 25.6       | 21.2           | 25.6       | 18.5           |
| 12/7 11:00 | 25.5       | 21.1           | 25.5       | 18.5           |
| 12/7 12:00 | 25.5       | 21.0           | 25.5       | 18.5           |
| 12/7 13:00 | 25.4       | 20.9           | 25.5       | 18.5           |
| 12/7 14:00 | 25.3       | 20.8           | 25.5       | 18.5           |
| 12/7 15:00 | 25.8       | 20.7           | 25.5       | 18.5           |
| 12/7 16:00 | 26.2       | 20.6           | 25.5       | 18.5           |
| 12/7 17:00 | 26.7       | 20.5           | 25.5       | 18.5           |
| 12/7 18:00 | 26.9       | 20.4           | 25.5       | 18.5           |
| 12/7 19:00 | 27.3       | 20.4           | 25.5       | 18.5           |
| 12/7 20:00 | 27.5       | 20.2           | 25.5       | 18.5           |
| 12/7 21:00 | 27.8       | 20.1           | 25.5       | 18.5           |
| 12/7 22:00 | 28.0       | 20.0           | 25.5       | 18.5           |
| 12/7 23:00 | 28.1       | 20.0           | 25.8       | 18.5           |
| 12/8 0:00  | 28.3       | 19.9           | 27.0       | 18.5           |
| 12/8 1:00  | 28.4       | 19.9           | 27.3       | 18.5           |
| 12/8 2:00  | 28.4       | 19.8           | 27.9       | 18.5           |
| 12/8 3:00  | 28.6       | 19.8           | 28.4       | 18.5           |
| 12/8 4:00  | 28.7       | 19.8           | 28.8       | 18.5           |
| 12/8 5:00  | 28.7       | 19.7           | 29.2       | 18.5           |
| 12/8 6:00  | 28.8       | 19.6           | 29.3       | 18.5           |