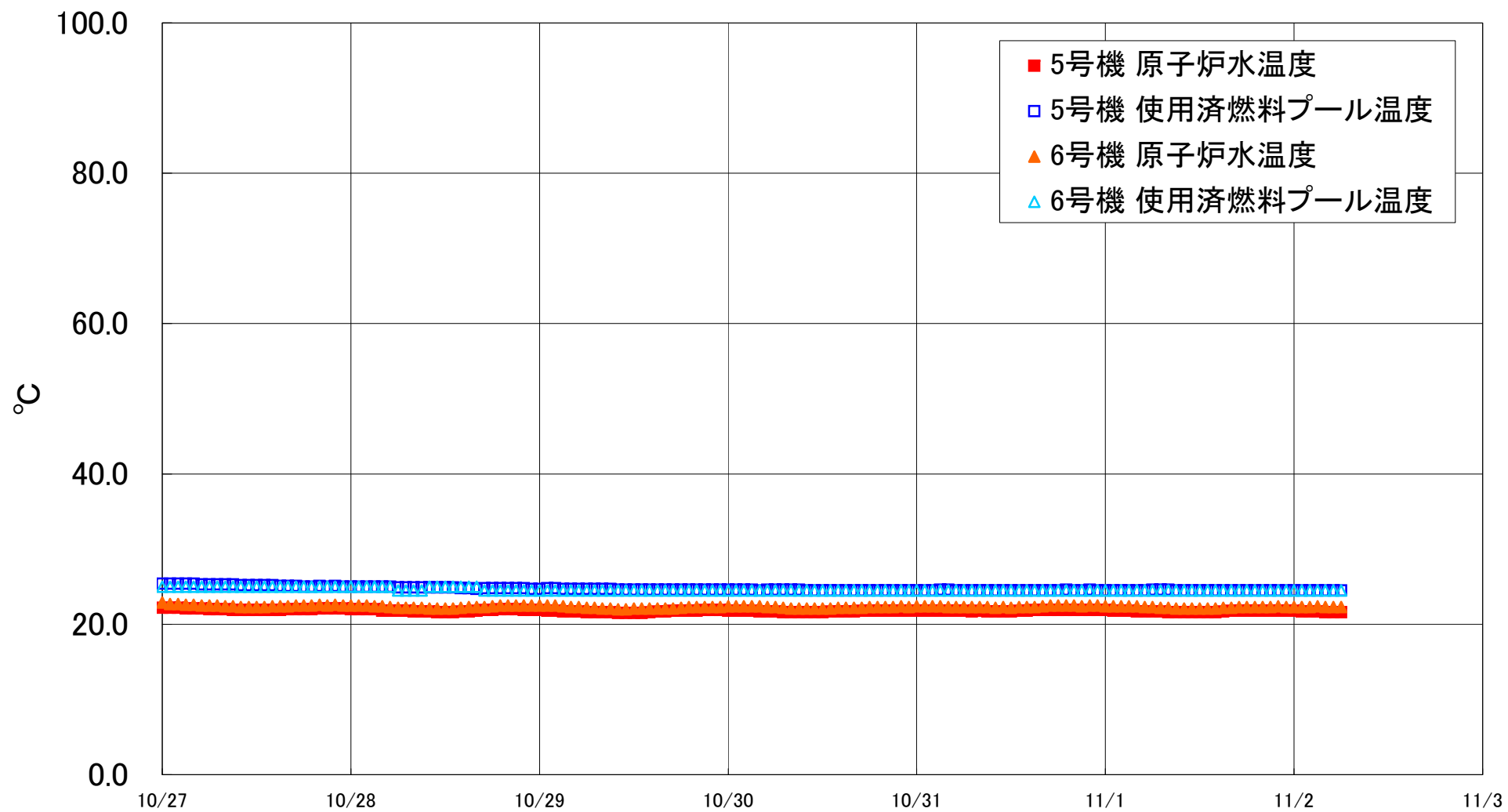


福島第一原子力発電所 5・6号機 原子炉水温度、使用済燃料プール温度推移



福島第一原子力発電所 5・6号機 原子炉水温度・使用済燃料プール温度

| 日時          | 5号機 原子炉水温度 | 5号機 使用済燃料プール温度 | 6号機 原子炉水温度 | 6号機 使用済燃料プール温度 |
|-------------|------------|----------------|------------|----------------|
| 10/30 14:00 | 21.7       | 24.5           | 22.2       | 24.5           |
| 10/30 15:00 | 21.7       | 24.5           | 22.2       | 24.5           |
| 10/30 16:00 | 21.7       | 24.5           | 22.2       | 24.5           |
| 10/30 17:00 | 21.8       | 24.5           | 22.2       | 24.5           |
| 10/30 18:00 | 21.8       | 24.5           | 22.3       | 24.5           |
| 10/30 19:00 | 21.8       | 24.5           | 22.3       | 24.5           |
| 10/30 20:00 | 21.8       | 24.5           | 22.3       | 24.5           |
| 10/30 21:00 | 21.8       | 24.5           | 22.3       | 24.5           |
| 10/30 22:00 | 21.8       | 24.5           | 22.4       | 24.5           |
| 10/30 23:00 | 21.8       | 24.5           | 22.3       | 24.5           |
| 10/31 0:00  | 21.8       | 24.5           | 22.4       | 24.5           |
| 10/31 1:00  | 21.8       | 24.5           | 22.4       | 24.5           |
| 10/31 2:00  | 21.8       | 24.5           | 22.4       | 24.5           |
| 10/31 3:00  | 21.8       | 24.6           | 22.4       | 24.5           |
| 10/31 4:00  | 21.8       | 24.6           | 22.3       | 24.5           |
| 10/31 5:00  | 21.8       | 24.5           | 22.3       | 24.5           |
| 10/31 6:00  | 21.8       | 24.5           | 22.3       | 24.5           |
| 10/31 7:00  | 21.7       | 24.5           | 22.3       | 24.5           |
| 10/31 8:00  | 21.8       | 24.5           | 22.3       | 24.5           |
| 10/31 9:00  | 21.7       | 24.5           | 22.3       | 24.5           |
| 10/31 10:00 | 21.7       | 24.5           | 22.2       | 24.5           |
| 10/31 11:00 | 21.7       | 24.5           | 22.3       | 24.5           |
| 10/31 12:00 | 21.7       | 24.5           | 22.2       | 24.5           |
| 10/31 13:00 | 21.8       | 24.5           | 22.3       | 24.5           |
| 10/31 14:00 | 21.8       | 24.5           | 22.3       | 24.5           |
| 10/31 15:00 | 21.9       | 24.5           | 22.3       | 24.5           |
| 10/31 16:00 | 21.9       | 24.5           | 22.4       | 24.5           |
| 10/31 17:00 | 21.9       | 24.5           | 22.5       | 24.5           |
| 10/31 18:00 | 21.9       | 24.5           | 22.5       | 24.5           |
| 10/31 19:00 | 21.9       | 24.6           | 22.5       | 24.5           |
| 10/31 20:00 | 21.9       | 24.5           | 22.5       | 24.5           |
| 10/31 21:00 | 21.9       | 24.5           | 22.4       | 24.5           |
| 10/31 22:00 | 21.9       | 24.6           | 22.5       | 24.5           |
| 10/31 23:00 | 21.9       | 24.5           | 22.5       | 24.5           |
| 11/1 0:00   | 21.9       | 24.5           | 22.4       | 24.5           |
| 11/1 1:00   | 21.8       | 24.5           | 22.4       | 24.5           |
| 11/1 2:00   | 21.8       | 24.5           | 22.4       | 24.5           |
| 11/1 3:00   | 21.8       | 24.5           | 22.4       | 24.5           |
| 11/1 4:00   | 21.7       | 24.5           | 22.4       | 24.5           |
| 11/1 5:00   | 21.7       | 24.5           | 22.3       | 24.5           |
| 11/1 6:00   | 21.7       | 24.6           | 22.3       | 24.5           |
| 11/1 7:00   | 21.7       | 24.6           | 22.2       | 24.5           |
| 11/1 8:00   | 21.6       | 24.6           | 22.2       | 24.5           |
| 11/1 9:00   | 21.6       | 24.5           | 22.1       | 24.5           |
| 11/1 10:00  | 21.6       | 24.5           | 22.1       | 24.5           |
| 11/1 11:00  | 21.6       | 24.5           | 22.1       | 24.5           |
| 11/1 12:00  | 21.6       | 24.5           | 22.1       | 24.5           |
| 11/1 13:00  | 21.6       | 24.5           | 22.1       | 24.5           |
| 11/1 14:00  | 21.6       | 24.5           | 22.1       | 24.5           |
| 11/1 15:00  | 21.7       | 24.5           | 22.2       | 24.5           |
| 11/1 16:00  | 21.8       | 24.5           | 22.2       | 24.5           |
| 11/1 17:00  | 21.8       | 24.5           | 22.3       | 24.5           |
| 11/1 18:00  | 21.8       | 24.5           | 22.3       | 24.5           |
| 11/1 19:00  | 21.8       | 24.5           | 22.3       | 24.5           |
| 11/1 20:00  | 21.8       | 24.5           | 22.3       | 24.5           |
| 11/1 21:00  | 21.8       | 24.5           | 22.3       | 24.5           |
| 11/1 22:00  | 21.8       | 24.5           | 22.4       | 24.5           |
| 11/1 23:00  | 21.8       | 24.5           | 22.3       | 24.5           |
| 11/2 0:00   | 21.8       | 24.5           | 22.3       | 24.5           |
| 11/2 1:00   | 21.7       | 24.5           | 22.3       | 24.5           |
| 11/2 2:00   | 21.7       | 24.5           | 22.3       | 24.5           |
| 11/2 3:00   | 21.7       | 24.5           | 22.4       | 24.5           |
| 11/2 4:00   | 21.6       | 24.5           | 22.3       | 24.5           |
| 11/2 5:00   | 21.6       | 24.5           | 22.3       | 24.5           |
| 11/2 6:00   | 21.6       | 24.5           | 22.3       | 24.5           |