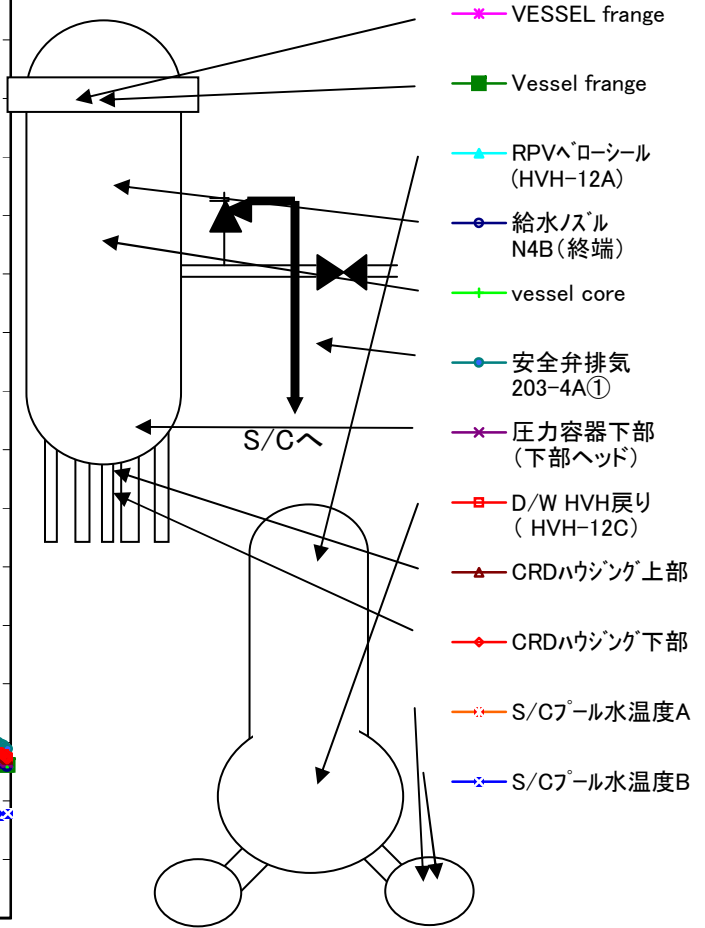
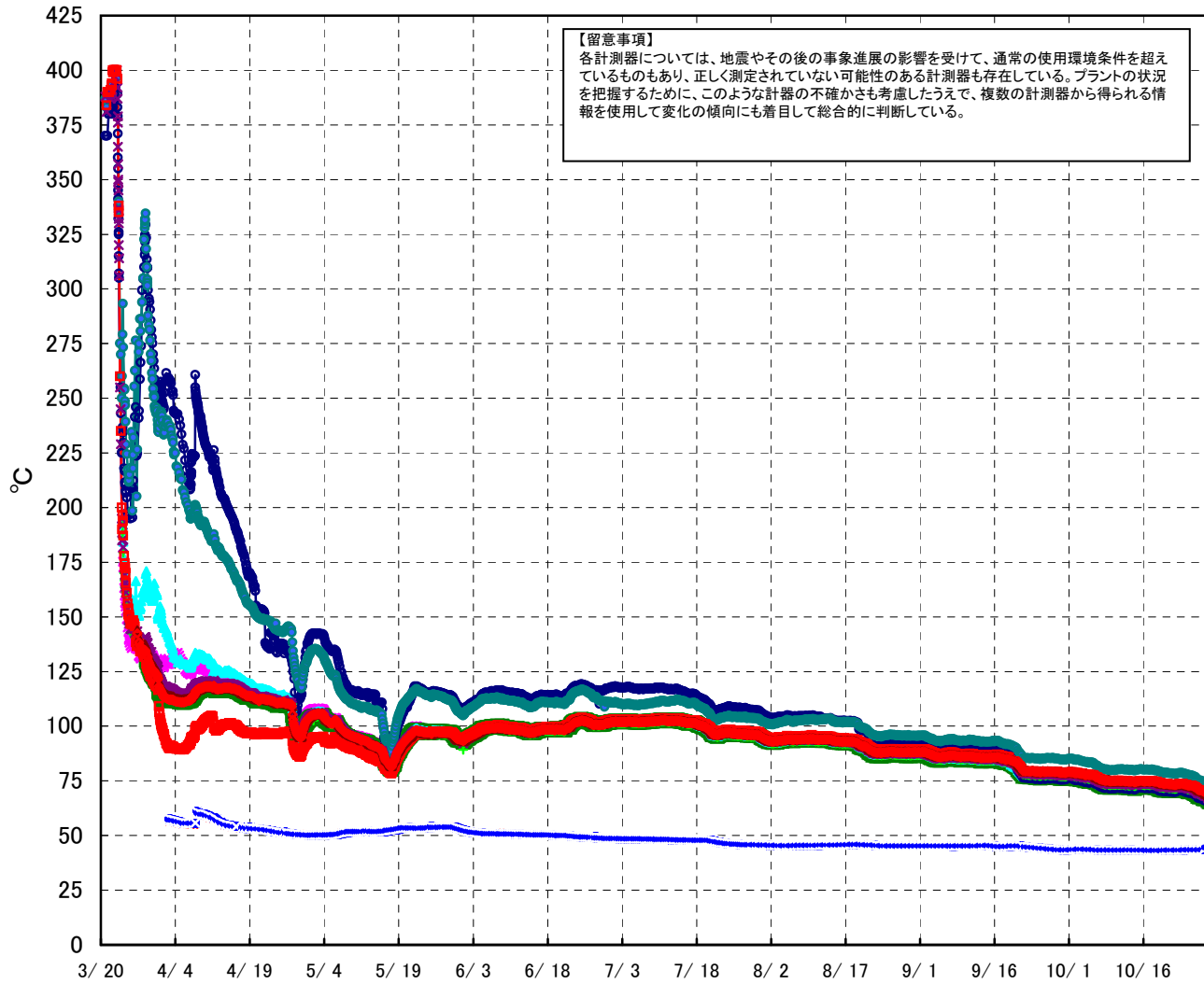
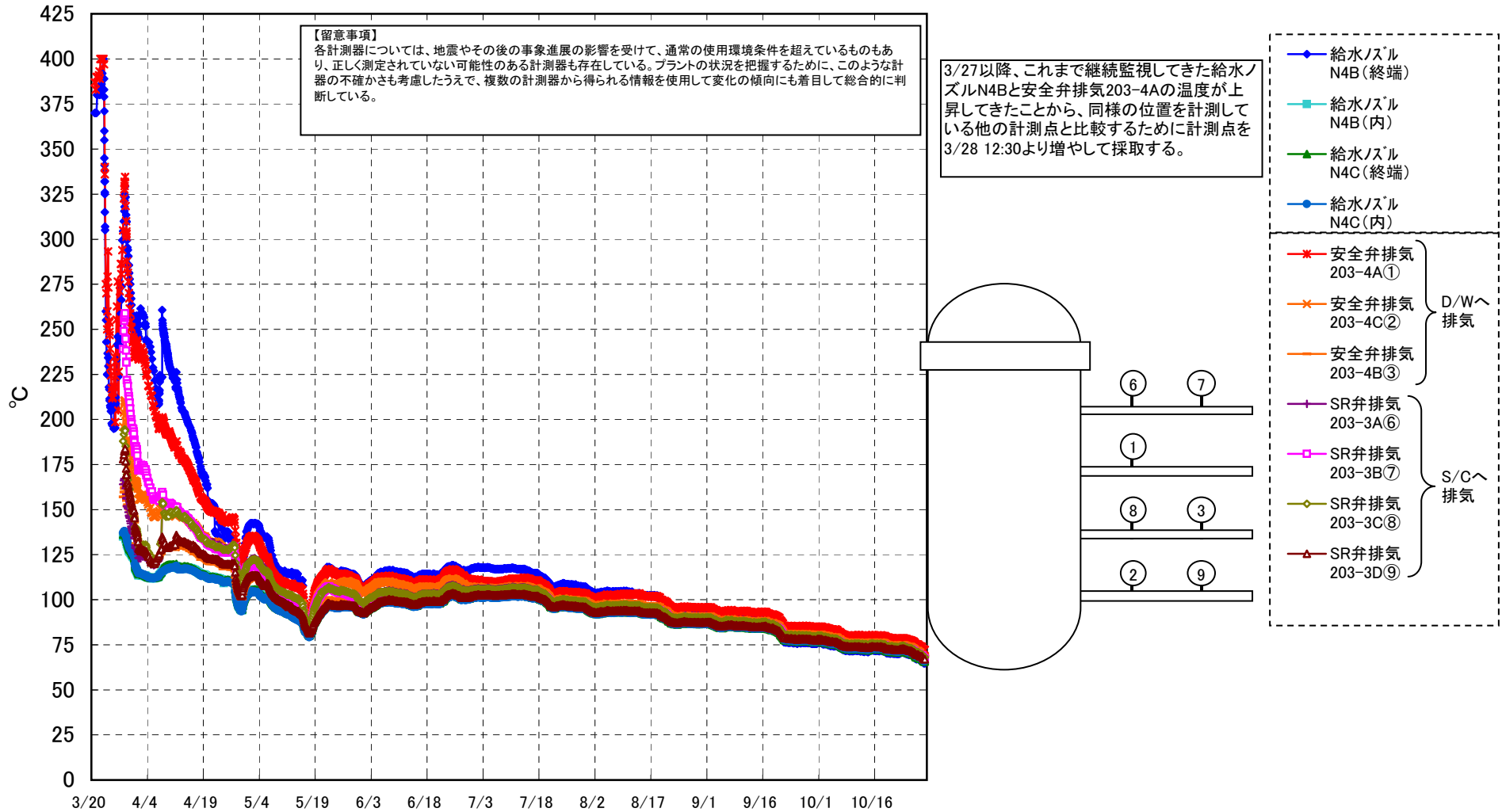


福島第一原子力発電所 1号機 温度に関するパラメータ (代表点)

【留意事項】
各計測器については、地震やその後の事象進展の影響を受けて、通常の使用環境条件を超えているものもあり、正しく測定されていない可能性のある計測器も存在している。プラントの状況を把握するために、このような計器の不確かさも考慮したうえで、複数の計測器から得られる情報を活用して変化の傾向にも着目して総合的に判断している。



福島第一原子力発電所 1号機 温度に関するパラメータ (給水ノズル及び安全弁排気温度)



福島第一原子力発電所 1号機 温度に関するパラメータ

【留意事項】

各計測器については、地震やその後の事象進展の影響を受けて、通常の使用環境条件を超えているものもあり、正しく測定されていない可能性のある計測器も存在している。プラントの状況を把握するために、このような計器の不確かさも考慮したうえで、複数の計測器から得られる情報を使用して変化の傾向にも着目して総合的に判断している。

| 日時 | VESSEL frange | Vessel frange | 給水ノズル N4B (終端) | 給水ノズル N4B (内) | 給水ノズル N4C (終端) | 給水ノズル N4C (内) | vessel core | 圧力容器 下部 (下部ヘッド) | GRDハウジング 上部 | GRDハウジング 下部 | 安全弁排気 203-4A① | 安全弁排気 203-4C② | 安全弁排気 203-4B③ | SR弁排気 203-3A⑥ | SR弁排気 203-3B⑦ | SR弁排気 203-3C⑧ | SR弁排気 203-3D⑨ | D/W HVH戻り (HVH-12C) | RPV ⁺ ローシール (HVH-12A) | S/C プール水 温度A | S/C プール水 温度B | 備考 |
|-------------|---------------|---------------|----------------|---------------|----------------|---------------|-------------|-----------------|-------------|-------------|---------------|---------------|---------------|---------------|---------------|---------------|---------------|---------------------|----------------------------------|--------------|--------------|----|
| 10/23 5:00 | 71.1 | 71.1 | 70.6 | 72.1 | 71.5 | 71.8 | 72.0 | 72.4 | 73.5 | 73.6 | 78.6 | 74.8 | 73.5 | 73.8 | 73.5 | 74.3 | 72.8 | 73.5 | 71.5 | 43.6 | 43.4 | |
| 10/23 11:00 | 71.2 | 71.2 | 70.7 | 72.2 | 71.6 | 71.8 | 72.1 | 72.5 | 73.6 | 73.7 | 78.6 | 74.9 | 73.6 | 73.9 | 73.6 | 74.4 | 72.9 | 73.6 | 71.6 | 43.6 | 43.4 | |
| 10/23 17:00 | 71.2 | 71.2 | 70.7 | 72.2 | 71.6 | 71.8 | 72.1 | 72.6 | 73.7 | 73.8 | 78.7 | 74.9 | 73.6 | 73.9 | 73.7 | 74.4 | 72.9 | 73.6 | 71.7 | 43.6 | 43.4 | |
| 10/23 23:00 | 70.9 | 70.9 | 70.4 | 71.9 | 71.3 | 71.6 | 71.9 | 72.3 | 73.5 | 73.6 | 78.5 | 74.7 | 73.4 | 73.6 | 73.3 | 74.1 | 72.7 | 73.5 | 71.4 | 43.6 | 43.4 | |
| 10/24 5:00 | 70.6 | 70.6 | 70.2 | 71.7 | 71.1 | 71.4 | 71.7 | 72.1 | 73.3 | 73.4 | 78.3 | 74.5 | 73.2 | 73.3 | 73.1 | 73.9 | 72.4 | 73.3 | 71.2 | 43.6 | 43.4 | |
| 10/24 11:00 | 70.4 | 70.4 | 69.9 | 71.6 | 70.9 | 71.2 | 71.5 | 71.9 | 73.2 | 73.3 | 78.2 | 74.3 | 73.0 | 73.1 | 72.9 | 73.7 | 72.3 | 73.2 | 71.0 | 43.6 | 43.5 | |
| 10/24 17:00 | 70.3 | 70.3 | 69.8 | 71.4 | 70.8 | 71.1 | 71.4 | 71.8 | 73.0 | 73.2 | 78.1 | 74.2 | 72.9 | 73.1 | 72.7 | 73.6 | 72.1 | 73.1 | 70.8 | 43.6 | 43.5 | |
| 10/24 23:00 | 70.0 | 70.0 | 69.6 | 71.2 | 70.5 | 70.8 | 71.1 | 71.6 | 72.8 | 72.9 | 77.8 | 73.9 | 72.6 | 72.8 | 72.5 | 73.3 | 71.9 | 72.8 | 70.6 | 43.6 | 43.5 | |
| 10/25 5:00 | 69.9 | 69.9 | 69.4 | 71.1 | 70.4 | 70.7 | 71.0 | 71.5 | 72.7 | 72.8 | 77.6 | 73.8 | 72.5 | 72.6 | 72.4 | 73.2 | 71.8 | 72.7 | 70.5 | 43.6 | 43.5 | |
| 10/25 9:00 | 70.0 | 70.0 | 69.5 | 71.2 | 70.4 | 70.7 | 71.0 | 71.5 | 72.6 | 72.8 | 77.7 | 73.8 | 72.5 | 72.7 | 72.4 | 73.2 | 71.7 | 72.7 | 70.5 | 43.6 | 43.5 | |
| 10/25 17:00 | 70.0 | 70.0 | 69.5 | 71.0 | 70.4 | 70.7 | 70.9 | 71.5 | 72.6 | 72.7 | 77.5 | 73.8 | 72.5 | 72.6 | 72.3 | 73.1 | 71.7 | 72.8 | 70.7 | 43.6 | 43.5 | |
| 10/25 23:00 | 69.6 | 69.6 | 69.2 | 70.7 | 70.1 | 70.4 | 70.7 | 71.2 | 72.4 | 72.6 | 77.3 | 73.5 | 72.2 | 72.3 | 72.1 | 72.9 | 71.5 | 72.5 | 70.3 | 43.6 | 43.5 | |
| 10/26 5:00 | 69.2 | 69.2 | 68.7 | 70.5 | 69.7 | 70.0 | 70.3 | 70.8 | 72.1 | 72.2 | 77.0 | 73.1 | 71.8 | 71.9 | 71.7 | 72.5 | 71.1 | 72.2 | 69.8 | 43.7 | 43.5 | |
| 10/26 11:00 | 69.0 | 69.0 | 68.5 | 70.1 | 69.5 | 69.9 | 70.1 | 70.6 | 71.9 | 72.0 | 76.8 | 72.9 | 71.6 | 71.7 | 71.4 | 72.3 | 70.9 | 72.0 | 69.6 | 43.6 | 43.5 | |
| 10/26 17:00 | 68.5 | 68.6 | 68.1 | 69.6 | 69.1 | 69.5 | 69.7 | 70.1 | 71.5 | 71.6 | 76.2 | 72.5 | 71.7 | 71.3 | 71.1 | 71.9 | 70.5 | 71.5 | 69.3 | 43.6 | 43.5 | |
| 10/26 23:00 | 67.7 | 67.8 | 67.3 | 69.0 | 68.3 | 68.8 | 69.0 | 69.5 | 70.9 | 71.0 | 75.5 | 71.9 | 70.6 | 70.6 | 70.3 | 71.2 | 69.8 | 70.9 | 68.5 | 43.7 | 43.5 | |
| 10/27 5:00 | 67.4 | 67.5 | 67.0 | 68.7 | 68.0 | 68.5 | 68.7 | 69.2 | 70.6 | 70.7 | 75.2 | 71.5 | 70.3 | 70.3 | 70.0 | 70.9 | 69.5 | 70.7 | 68.2 | 43.6 | 43.5 | |
| 10/27 11:00 | 67.7 | 67.7 | 67.2 | 68.8 | 68.2 | 68.6 | 68.8 | 69.3 | 70.6 | 70.8 | 75.2 | 71.6 | 70.4 | 70.4 | 70.1 | 71.0 | 69.7 | 70.7 | 68.3 | 43.6 | 43.5 | |
| 10/27 17:00 | 67.5 | 67.6 | 67.2 | 68.6 | 68.1 | 68.5 | 68.7 | 69.2 | 70.5 | 70.6 | 75.1 | 71.5 | 70.3 | 70.3 | 70.1 | 70.9 | 69.6 | 70.6 | 68.3 | 43.7 | 43.5 | |
| 10/27 23:00 | 66.9 | 66.9 | 66.5 | 68.0 | 67.5 | 67.9 | 68.2 | 68.7 | 70.0 | 70.2 | 74.5 | 70.9 | 69.7 | 69.7 | 69.4 | 70.3 | 69.0 | 70.1 | 67.7 | 43.7 | 43.5 | |
| 10/28 5:00 | 66.6 | 66.7 | 66.2 | 67.8 | 67.2 | 67.7 | 67.9 | 68.4 | 69.8 | 70.0 | 74.2 | 70.6 | 69.5 | 69.4 | 69.2 | 70.0 | 68.7 | 69.8 | 67.4 | 43.7 | 43.6 | |
| 10/28 11:00 | 66.7 | 66.7 | 65.9 | 67.5 | 67.3 | 67.5 | 67.8 | 68.1 | 69.1 | 69.6 | 74.1 | 69.4 | 70.4 | 69.1 | 68.9 | 69.7 | 68.5 | 69.9 | 67.6 | 44.6 | 44.5 | |
| 10/28 17:00 | 66.7 | 66.9 | 66.3 | 67.9 | 67.2 | 67.5 | 67.8 | 68.0 | 69.2 | 69.4 | 73.8 | 69.4 | 70.4 | 69.2 | 68.9 | 69.7 | 68.6 | 69.9 | 67.6 | 44.7 | 44.6 | |
| 10/28 23:00 | 65.7 | 65.9 | 65.4 | 67.0 | 66.3 | 66.5 | 66.9 | 67.0 | 68.4 | 68.5 | 72.8 | 68.4 | 69.4 | 68.1 | 67.9 | 68.7 | 67.6 | 69.0 | 66.7 | 44.7 | 44.6 | |
| 10/29 5:00 | 65.1 | 65.3 | 64.7 | 66.1 | 65.7 | 66.0 | 66.2 | 66.5 | 67.8 | 68.0 | 72.2 | 67.9 | 68.8 | 67.6 | 67.3 | 68.2 | 67.1 | 68.5 | 66.1 | 44.7 | 44.6 | |
| 10/29 11:00 | 65.2 | 65.3 | 64.7 | 66.3 | 65.7 | 66.0 | 66.2 | 66.5 | 67.8 | 67.9 | 72.2 | 67.9 | 68.8 | 67.6 | 67.3 | 68.1 | 67.0 | 68.4 | 66.1 | 44.7 | 44.7 | |