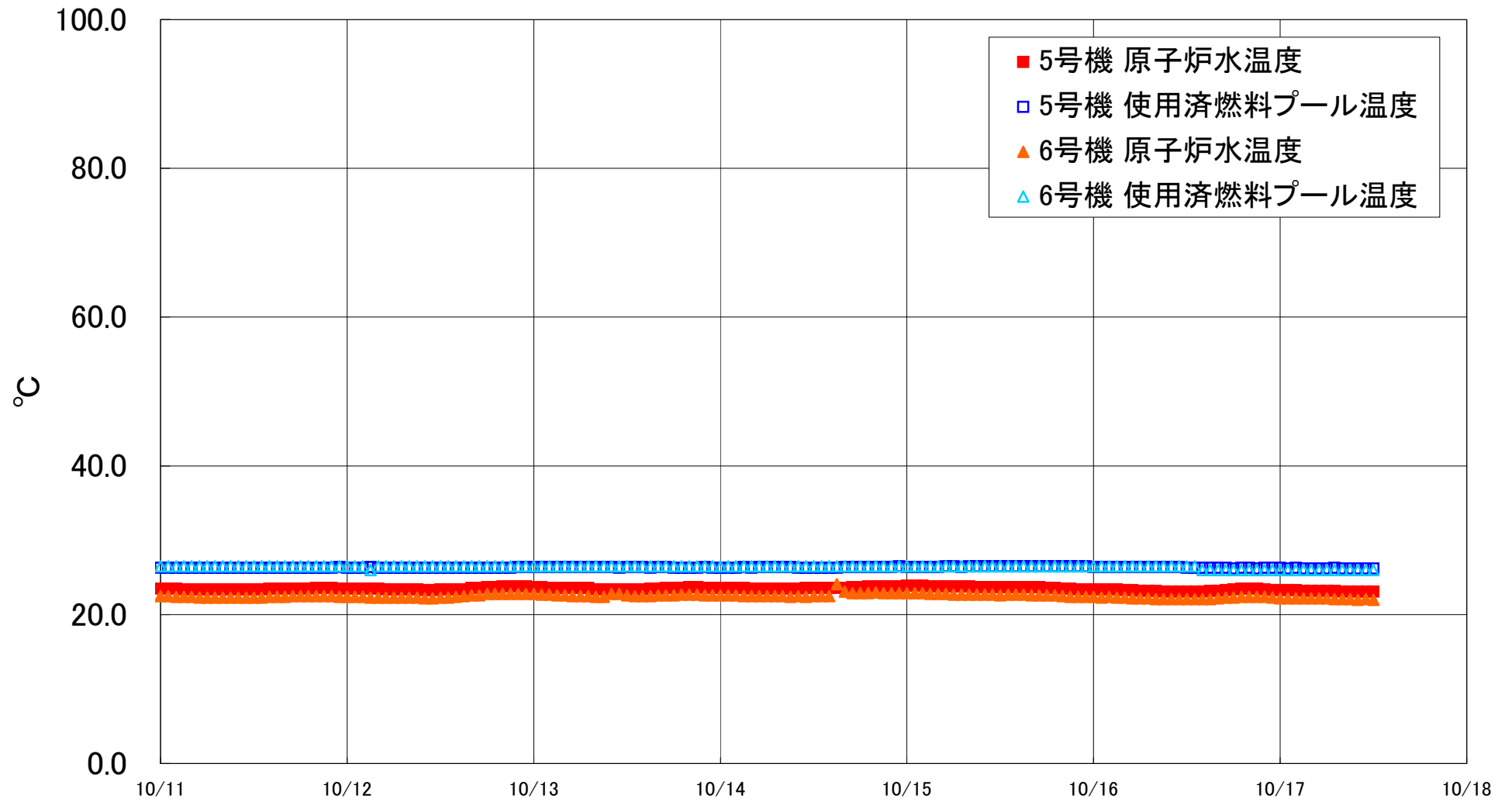


福島第一原子力発電所 5・6号機 原子炉水温度、使用済燃料プール温度推移



福島第一原子力発電所 5・6号機 原子炉水温度・使用済燃料プール温度

| 日時          | 5号機 原子炉水温度 | 5号機 使用済燃料プール温度 | 6号機 原子炉水温度 | 6号機 使用済燃料プール温度 |
|-------------|------------|----------------|------------|----------------|
| 10/14 20:00 | 23.8       | 26.4           | 23.0       | 26.5           |
| 10/14 21:00 | 23.8       | 26.4           | 22.9       | 26.5           |
| 10/14 22:00 | 23.8       | 26.4           | 22.9       | 26.5           |
| 10/14 23:00 | 23.8       | 26.5           | 22.9       | 26.5           |
| 10/15 0:00  | 23.9       | 26.4           | 22.9       | 26.5           |
| 10/15 1:00  | 23.9       | 26.4           | 22.9       | 26.5           |
| 10/15 2:00  | 23.9       | 26.4           | 22.9       | 26.5           |
| 10/15 3:00  | 23.8       | 26.4           | 22.8       | 26.5           |
| 10/15 4:00  | 23.8       | 26.4           | 22.8       | 26.5           |
| 10/15 5:00  | 23.8       | 26.5           | 22.8       | 26.5           |
| 10/15 6:00  | 23.8       | 26.5           | 22.7       | 26.5           |
| 10/15 7:00  | 23.8       | 26.4           | 22.7       | 26.5           |
| 10/15 8:00  | 23.8       | 26.5           | 22.7       | 26.5           |
| 10/15 9:00  | 23.7       | 26.5           | 22.7       | 26.5           |
| 10/15 10:00 | 23.7       | 26.5           | 22.7       | 26.5           |
| 10/15 11:00 | 23.7       | 26.5           | 22.7       | 26.5           |
| 10/15 12:00 | 23.7       | 26.5           | 22.6       | 26.5           |
| 10/15 13:00 | 23.7       | 26.5           | 22.7       | 26.5           |
| 10/15 14:00 | 23.7       | 26.5           | 22.7       | 26.5           |
| 10/15 15:00 | 23.7       | 26.5           | 22.7       | 26.5           |
| 10/15 16:00 | 23.7       | 26.5           | 22.6       | 26.5           |
| 10/15 17:00 | 23.7       | 26.5           | 22.6       | 26.5           |
| 10/15 18:00 | 23.6       | 26.5           | 22.6       | 26.5           |
| 10/15 19:00 | 23.6       | 26.5           | 22.6       | 26.5           |
| 10/15 20:00 | 23.5       | 26.5           | 22.5       | 26.5           |
| 10/15 21:00 | 23.5       | 26.5           | 22.4       | 26.5           |
| 10/15 22:00 | 23.4       | 26.5           | 22.4       | 26.5           |
| 10/15 23:00 | 23.4       | 26.5           | 22.4       | 26.5           |
| 10/16 0:00  | 23.4       | 26.4           | 22.4       | 26.5           |
| 10/16 1:00  | 23.4       | 26.4           | 22.3       | 26.5           |
| 10/16 2:00  | 23.4       | 26.4           | 22.4       | 26.5           |
| 10/16 3:00  | 23.4       | 26.4           | 22.3       | 26.5           |
| 10/16 4:00  | 23.3       | 26.4           | 22.3       | 26.5           |
| 10/16 5:00  | 23.3       | 26.4           | 22.2       | 26.5           |
| 10/16 6:00  | 23.2       | 26.4           | 22.2       | 26.5           |
| 10/16 7:00  | 23.2       | 26.4           | 22.2       | 26.5           |
| 10/16 8:00  | 23.2       | 26.4           | 22.1       | 26.5           |
| 10/16 9:00  | 23.1       | 26.4           | 22.1       | 26.5           |
| 10/16 10:00 | 23.1       | 26.4           | 22.1       | 26.5           |
| 10/16 11:00 | 23.1       | 26.4           | 22.1       | 26.5           |
| 10/16 12:00 | 23.1       | 26.3           | 22.1       | 26.5           |
| 10/16 13:00 | 23.1       | 26.3           | 22.1       | 26.5           |
| 10/16 14:00 | 23.1       | 26.3           | 22.1       | 26.0           |
| 10/16 15:00 | 23.2       | 26.3           | 22.1       | 26.0           |
| 10/16 16:00 | 23.2       | 26.3           | 22.2       | 26.0           |
| 10/16 17:00 | 23.3       | 26.3           | 22.3       | 26.0           |
| 10/16 18:00 | 23.4       | 26.2           | 22.3       | 26.0           |
| 10/16 19:00 | 23.5       | 26.3           | 22.4       | 26.0           |
| 10/16 20:00 | 23.5       | 26.3           | 22.4       | 26.0           |
| 10/16 21:00 | 23.5       | 26.2           | 22.4       | 26.0           |
| 10/16 22:00 | 23.4       | 26.3           | 22.4       | 26.0           |
| 10/16 23:00 | 23.3       | 26.3           | 22.3       | 26.0           |
| 10/17 0:00  | 23.3       | 26.3           | 22.2       | 26.0           |
| 10/17 1:00  | 23.3       | 26.2           | 22.2       | 26.0           |
| 10/17 2:00  | 23.3       | 26.3           | 22.2       | 26.0           |
| 10/17 3:00  | 23.2       | 26.2           | 22.2       | 26.0           |
| 10/17 4:00  | 23.2       | 26.2           | 22.2       | 26.0           |
| 10/17 5:00  | 23.2       | 26.2           | 22.2       | 26.0           |
| 10/17 6:00  | 23.2       | 26.2           | 22.2       | 26.0           |
| 10/17 7:00  | 23.2       | 26.3           | 22.1       | 26.0           |
| 10/17 8:00  | 23.1       | 26.2           | 22.1       | 26.0           |
| 10/17 9:00  | 23.1       | 26.2           | 22.1       | 26.0           |
| 10/17 10:00 | 23.1       | 26.2           | 22.0       | 26.0           |
| 10/17 11:00 | 23.1       | 26.2           | 22.1       | 26.0           |
| 10/17 12:00 | 23.1       | 26.2           | 22.0       | 26.0           |