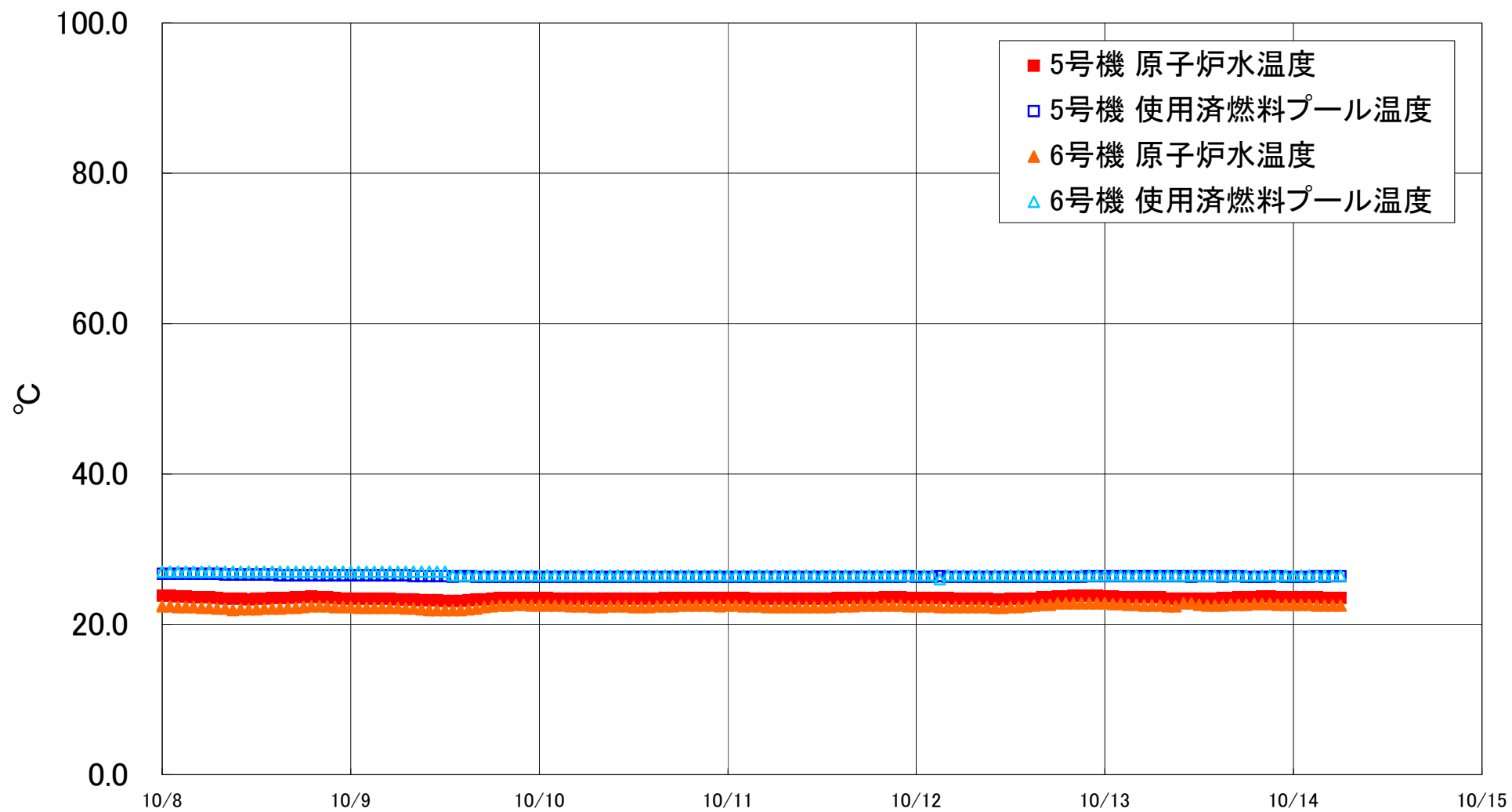


福島第一原子力発電所 5・6号機 原子炉水温度、使用済燃料プール温度推移



福島第一原子力発電所 5・6号機 原子炉水温度・使用済燃料プール温度

| 日時 | 5号機 原子炉水温度 | 5号機 使用済燃料プール温度 | 6号機 原子炉水温度 | 6号機 使用済燃料プール温度 |
|-------------|------------|----------------|------------|----------------|
| 10/11 14:00 | 23.5 | 26.3 | 22.4 | 26.5 |
| 10/11 15:00 | 23.5 | 26.3 | 22.4 | 26.5 |
| 10/11 16:00 | 23.5 | 26.3 | 22.4 | 26.5 |
| 10/11 17:00 | 23.5 | 26.3 | 22.5 | 26.5 |
| 10/11 18:00 | 23.5 | 26.3 | 22.5 | 26.5 |
| 10/11 19:00 | 23.5 | 26.3 | 22.5 | 26.5 |
| 10/11 20:00 | 23.6 | 26.3 | 22.5 | 26.5 |
| 10/11 21:00 | 23.6 | 26.3 | 22.5 | 26.5 |
| 10/11 22:00 | 23.6 | 26.3 | 22.5 | 26.5 |
| 10/11 23:00 | 23.5 | 26.4 | 22.4 | 26.5 |
| 10/12 0:00 | 23.5 | 26.3 | 22.4 | 26.5 |
| 10/12 1:00 | 23.5 | 26.3 | 22.4 | 26.5 |
| 10/12 2:00 | 23.5 | 26.3 | 22.4 | 26.5 |
| 10/12 3:00 | 23.5 | 26.4 | 22.3 | 26.0 |
| 10/12 4:00 | 23.5 | 26.3 | 22.3 | 26.5 |
| 10/12 5:00 | 23.4 | 26.3 | 22.3 | 26.5 |
| 10/12 6:00 | 23.4 | 26.3 | 22.3 | 26.5 |
| 10/12 7:00 | 23.4 | 26.3 | 22.3 | 26.5 |
| 10/12 8:00 | 23.4 | 26.3 | 22.3 | 26.5 |
| 10/12 9:00 | 23.4 | 26.3 | 22.3 | 26.5 |
| 10/12 10:00 | 23.3 | 26.3 | 22.2 | 26.5 |
| 10/12 11:00 | 23.3 | 26.3 | 22.2 | 26.5 |
| 10/12 12:00 | 23.4 | 26.3 | 22.3 | 26.5 |
| 10/12 13:00 | 23.4 | 26.3 | 22.3 | 26.5 |
| 10/12 14:00 | 23.4 | 26.3 | 22.4 | 26.5 |
| 10/12 15:00 | 23.4 | 26.3 | 22.5 | 26.5 |
| 10/12 16:00 | 23.6 | 26.3 | 22.6 | 26.5 |
| 10/12 17:00 | 23.6 | 26.3 | 22.6 | 26.5 |
| 10/12 18:00 | 23.7 | 26.3 | 22.8 | 26.5 |
| 10/12 19:00 | 23.7 | 26.3 | 22.8 | 26.5 |
| 10/12 20:00 | 23.8 | 26.3 | 22.8 | 26.5 |
| 10/12 21:00 | 23.8 | 26.3 | 22.8 | 26.5 |
| 10/12 22:00 | 23.8 | 26.4 | 22.8 | 26.5 |
| 10/12 23:00 | 23.8 | 26.4 | 22.8 | 26.5 |
| 10/13 0:00 | 23.7 | 26.4 | 22.8 | 26.5 |
| 10/13 1:00 | 23.7 | 26.4 | 22.7 | 26.5 |
| 10/13 2:00 | 23.6 | 26.4 | 22.7 | 26.5 |
| 10/13 3:00 | 23.6 | 26.4 | 22.6 | 26.5 |
| 10/13 4:00 | 23.6 | 26.4 | 22.6 | 26.5 |
| 10/13 5:00 | 23.6 | 26.4 | 22.5 | 26.5 |
| 10/13 6:00 | 23.6 | 26.4 | 22.5 | 26.5 |
| 10/13 7:00 | 23.6 | 26.4 | 22.5 | 26.5 |
| 10/13 8:00 | 23.4 | 26.4 | 22.4 | 26.5 |
| 10/13 9:00 | 23.4 | 26.4 | 22.4 | 26.5 |
| 10/13 10:00 | 23.4 | 26.4 | 22.8 | 26.5 |
| 10/13 11:00 | 23.4 | 26.3 | 22.8 | 26.5 |
| 10/13 12:00 | 23.4 | 26.4 | 22.6 | 26.5 |
| 10/13 13:00 | 23.4 | 26.4 | 22.5 | 26.5 |
| 10/13 14:00 | 23.4 | 26.4 | 22.5 | 26.5 |
| 10/13 15:00 | 23.5 | 26.3 | 22.5 | 26.5 |
| 10/13 16:00 | 23.5 | 26.4 | 22.6 | 26.5 |
| 10/13 17:00 | 23.6 | 26.4 | 22.6 | 26.5 |
| 10/13 18:00 | 23.6 | 26.3 | 22.6 | 26.5 |
| 10/13 19:00 | 23.6 | 26.3 | 22.7 | 26.5 |
| 10/13 20:00 | 23.7 | 26.3 | 22.7 | 26.5 |
| 10/13 21:00 | 23.7 | 26.3 | 22.7 | 26.5 |
| 10/13 22:00 | 23.6 | 26.4 | 22.6 | 26.5 |
| 10/13 23:00 | 23.6 | 26.3 | 22.6 | 26.5 |
| 10/14 0:00 | 23.6 | 26.3 | 22.6 | 26.5 |
| 10/14 1:00 | 23.6 | 26.3 | 22.6 | 26.5 |
| 10/14 2:00 | 23.6 | 26.3 | 22.6 | 26.5 |
| 10/14 3:00 | 23.6 | 26.4 | 22.5 | 26.5 |
| 10/14 4:00 | 23.5 | 26.3 | 22.5 | 26.5 |
| 10/14 5:00 | 23.5 | 26.4 | 22.5 | 26.5 |
| 10/14 6:00 | 23.5 | 26.4 | 22.5 | 26.5 |