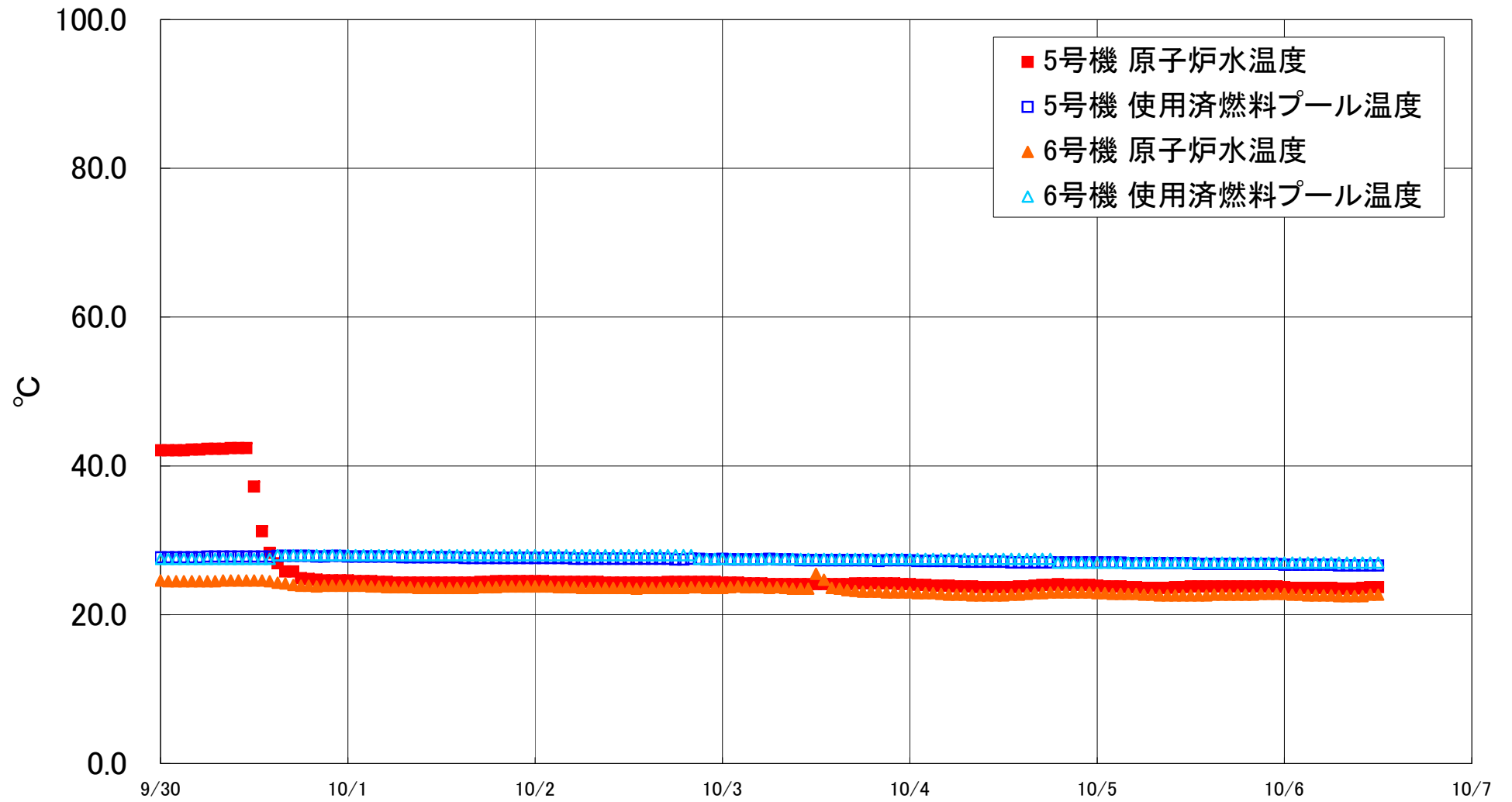


福島第一原子力発電所 5・6号機 原子炉水温度、使用済燃料プール温度推移



福島第一原子力発電所 5・6号機 原子炉水温度・使用済燃料プール温度

| 日時 | 5号機 原子炉水温度 | 5号機 使用済燃料プール温度 | 6号機 原子炉水温度 | 6号機 使用済燃料プール温度 |
|------------|------------|----------------|------------|----------------|
| 10/3 20:00 | 24.2 | 27.2 | 23.1 | 27.5 |
| 10/3 21:00 | 24.2 | 27.3 | 23.0 | 27.5 |
| 10/3 22:00 | 24.2 | 27.3 | 23.0 | 27.5 |
| 10/3 23:00 | 24.1 | 27.3 | 23.0 | 27.5 |
| 10/4 0:00 | 24.1 | 27.3 | 23.0 | 27.5 |
| 10/4 1:00 | 24.0 | 27.2 | 22.9 | 27.5 |
| 10/4 2:00 | 24.0 | 27.2 | 22.9 | 27.5 |
| 10/4 3:00 | 23.9 | 27.2 | 22.9 | 27.5 |
| 10/4 4:00 | 23.9 | 27.2 | 22.8 | 27.5 |
| 10/4 5:00 | 23.9 | 27.2 | 22.7 | 27.5 |
| 10/4 6:00 | 23.8 | 27.2 | 22.7 | 27.5 |
| 10/4 7:00 | 23.8 | 27.1 | 22.7 | 27.5 |
| 10/4 8:00 | 23.8 | 27.1 | 22.6 | 27.5 |
| 10/4 9:00 | 23.7 | 27.1 | 22.6 | 27.5 |
| 10/4 10:00 | 23.7 | 27.1 | 22.6 | 27.5 |
| 10/4 11:00 | 23.7 | 27.1 | 22.6 | 27.5 |
| 10/4 12:00 | 23.7 | 27.1 | 22.6 | 27.5 |
| 10/4 13:00 | 23.7 | 27.0 | 22.7 | 27.5 |
| 10/4 14:00 | 23.8 | 27.0 | 22.7 | 27.5 |
| 10/4 15:00 | 23.8 | 27.0 | 22.8 | 27.5 |
| 10/4 16:00 | 23.9 | 27.0 | 22.9 | 27.5 |
| 10/4 17:00 | 24.0 | 27.0 | 22.9 | 27.5 |
| 10/4 18:00 | 24.0 | 27.0 | 23.0 | 27.5 |
| 10/4 19:00 | 24.1 | 27.0 | 23.0 | 27.0 |
| 10/4 20:00 | 24.0 | 27.0 | 23.0 | 27.0 |
| 10/4 21:00 | 24.0 | 27.0 | 23.0 | 27.0 |
| 10/4 22:00 | 24.0 | 27.0 | 23.0 | 27.0 |
| 10/4 23:00 | 24.0 | 27.0 | 23.0 | 27.0 |
| 10/5 0:00 | 23.9 | 27.0 | 22.9 | 27.0 |
| 10/5 1:00 | 23.8 | 27.0 | 22.9 | 27.0 |
| 10/5 2:00 | 23.8 | 27.0 | 22.8 | 27.0 |
| 10/5 3:00 | 23.8 | 27.0 | 22.8 | 27.0 |
| 10/5 4:00 | 23.7 | 26.9 | 22.8 | 27.0 |
| 10/5 5:00 | 23.7 | 26.9 | 22.8 | 27.0 |
| 10/5 6:00 | 23.6 | 26.9 | 22.7 | 27.0 |
| 10/5 7:00 | 23.6 | 26.9 | 22.7 | 27.0 |
| 10/5 8:00 | 23.6 | 26.9 | 22.6 | 27.0 |
| 10/5 9:00 | 23.6 | 26.9 | 22.6 | 27.0 |
| 10/5 10:00 | 23.7 | 26.9 | 22.6 | 27.0 |
| 10/5 11:00 | 23.7 | 26.9 | 22.6 | 27.0 |
| 10/5 12:00 | 23.8 | 26.9 | 22.6 | 27.0 |
| 10/5 13:00 | 23.8 | 26.8 | 22.6 | 27.0 |
| 10/5 14:00 | 23.8 | 26.8 | 22.6 | 27.0 |
| 10/5 15:00 | 23.8 | 26.8 | 22.7 | 27.0 |
| 10/5 16:00 | 23.8 | 26.8 | 22.7 | 27.0 |
| 10/5 17:00 | 23.8 | 26.8 | 22.7 | 27.0 |
| 10/5 18:00 | 23.8 | 26.8 | 22.7 | 27.0 |
| 10/5 19:00 | 23.8 | 26.8 | 22.7 | 27.0 |
| 10/5 20:00 | 23.8 | 26.8 | 22.7 | 27.0 |
| 10/5 21:00 | 23.8 | 26.8 | 22.8 | 27.0 |
| 10/5 22:00 | 23.8 | 26.8 | 22.8 | 27.0 |
| 10/5 23:00 | 23.8 | 26.8 | 22.8 | 27.0 |
| 10/6 0:00 | 23.7 | 26.7 | 22.8 | 27.0 |
| 10/6 1:00 | 23.6 | 26.7 | 22.7 | 27.0 |
| 10/6 2:00 | 23.6 | 26.7 | 22.7 | 27.0 |
| 10/6 3:00 | 23.6 | 26.7 | 22.6 | 27.0 |
| 10/6 4:00 | 23.6 | 26.7 | 22.6 | 27.0 |
| 10/6 5:00 | 23.6 | 26.7 | 22.6 | 27.0 |
| 10/6 6:00 | 23.6 | 26.7 | 22.6 | 27.0 |
| 10/6 7:00 | 23.5 | 26.6 | 22.5 | 27.0 |
| 10/6 8:00 | 23.5 | 26.6 | 22.5 | 27.0 |
| 10/6 9:00 | 23.5 | 26.6 | 22.5 | 27.0 |
| 10/6 10:00 | 23.6 | 26.6 | 22.5 | 27.0 |
| 10/6 11:00 | 23.7 | 26.6 | 22.7 | 27.0 |
| 10/6 12:00 | 23.7 | 26.6 | 22.7 | 27.0 |