

Work environment improvements at the Fukushima Daiichi Nuclear Power Station

<Reference>
October 25, 2018

Tokyo Electric Power Company Holdings, Inc.
Fukushima Daiichi D&D Engineering Company

- Site areas are categorized as one of three zones (Red/Yellow/Green) in accordance with contamination conditions. Protective equipment suitable for each zone is required.
- Contamination conditions have improved as a result of dose reduction measures such as paving and rubble removal, and now the Green zone, where only light equipment (helmet, disposable dust mask, goggles, gloves and work boots) is required, covers 96% of the site.
- And, there are areas within the Green zone (such as the access control facility, areas around the rest house and around the main anti-earthquake building) where only gloves have been required when passing through since March 30, 2017 because it has been confirmed that there is no contamination from radioactive substances in these areas.



Fig.1. Zone layout at the Power Station

Table 1. Main protective equipment for each zone

	Areas	Additional equipment
Red zone	Inside Unit 1-3 reactor buildings Some floors of Unit 4 reactor building	Anorak over Protective clothes, Helmet, Full-face mask, Gloves, Work boots
Yellow zone	Around Unit 1-4 reactor buildings Some floors of Unit 4 reactor building	Protective clothes, Helmet, Full-face mask or Half-face mask & Goggles, Gloves, Work boots
Green zone	Most of the site except for the areas shown above	Helmet, Disposable dust mask, Goggles, Gloves, Work boots
Areas where only gloves are required when passing through	Access control facility Areas around the rest house and around the main anti-earthquake building	Gloves (Note) Green zone equipment is needed when engaging in work

More areas where additional equipment is not needed are being opened for workers to pass through and for tours

- In order to reduce the burden on workers at the power station and also the amount of waste being generated, on **October 1 the area through which workers can pass wearing only gloves was expanded to include the walkway that connects the area around the rest house to the main anti-earthquake building. Moreover, additional equipment, including gloves, is no longer required.**
- As we move forward with decommissioning, we believe it important for the people to directly see conditions on site and talk about what they've seen with other people. Therefore, **we have reduced dose levels on high ground on the west side of Units 1 through 4, and from November 1 tour participants will be able to come on-site wearing the clothes they arrived in.**
- This will eliminate the burden on tour participants associated with wearing protective equipment, and also reduce the preparation time required before entering the site.
- We will continue to move steadily forward with decommissioning while strictly managing the work environment and prioritizing worker safety.

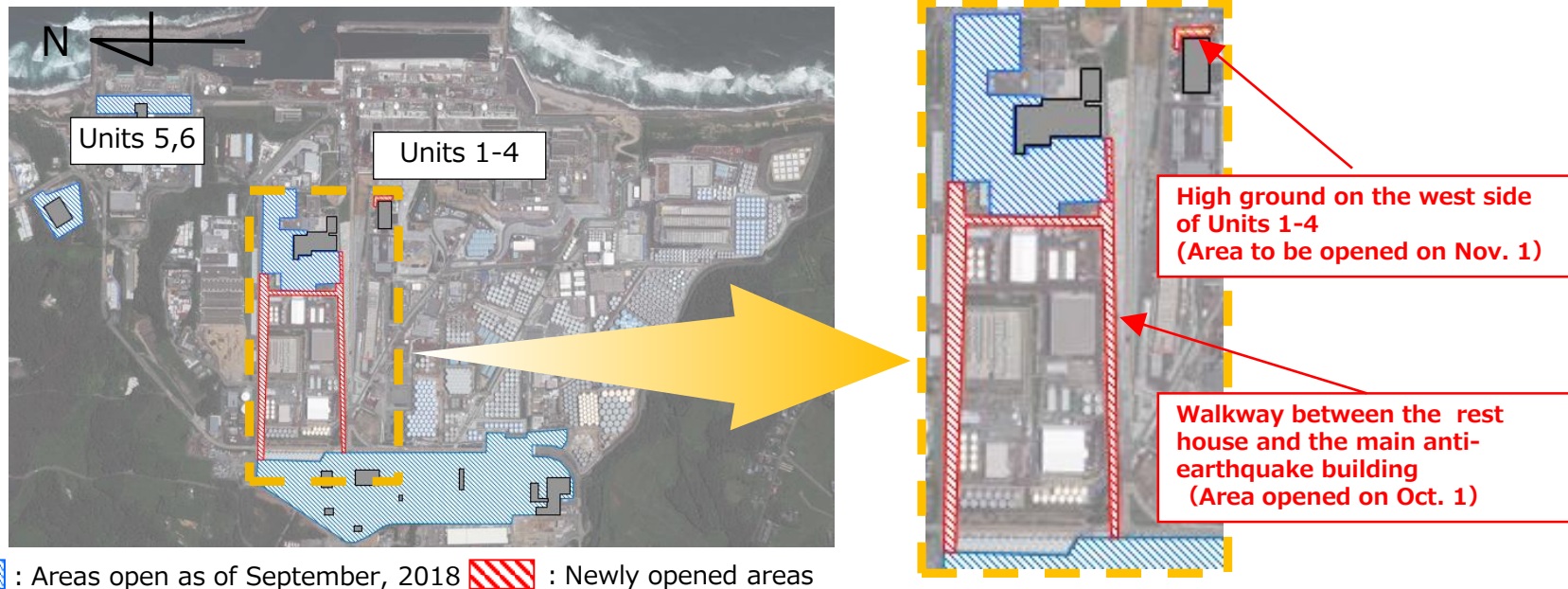


Fig.2. Areas where additional equipment is not necessary when passing through or participating in tours