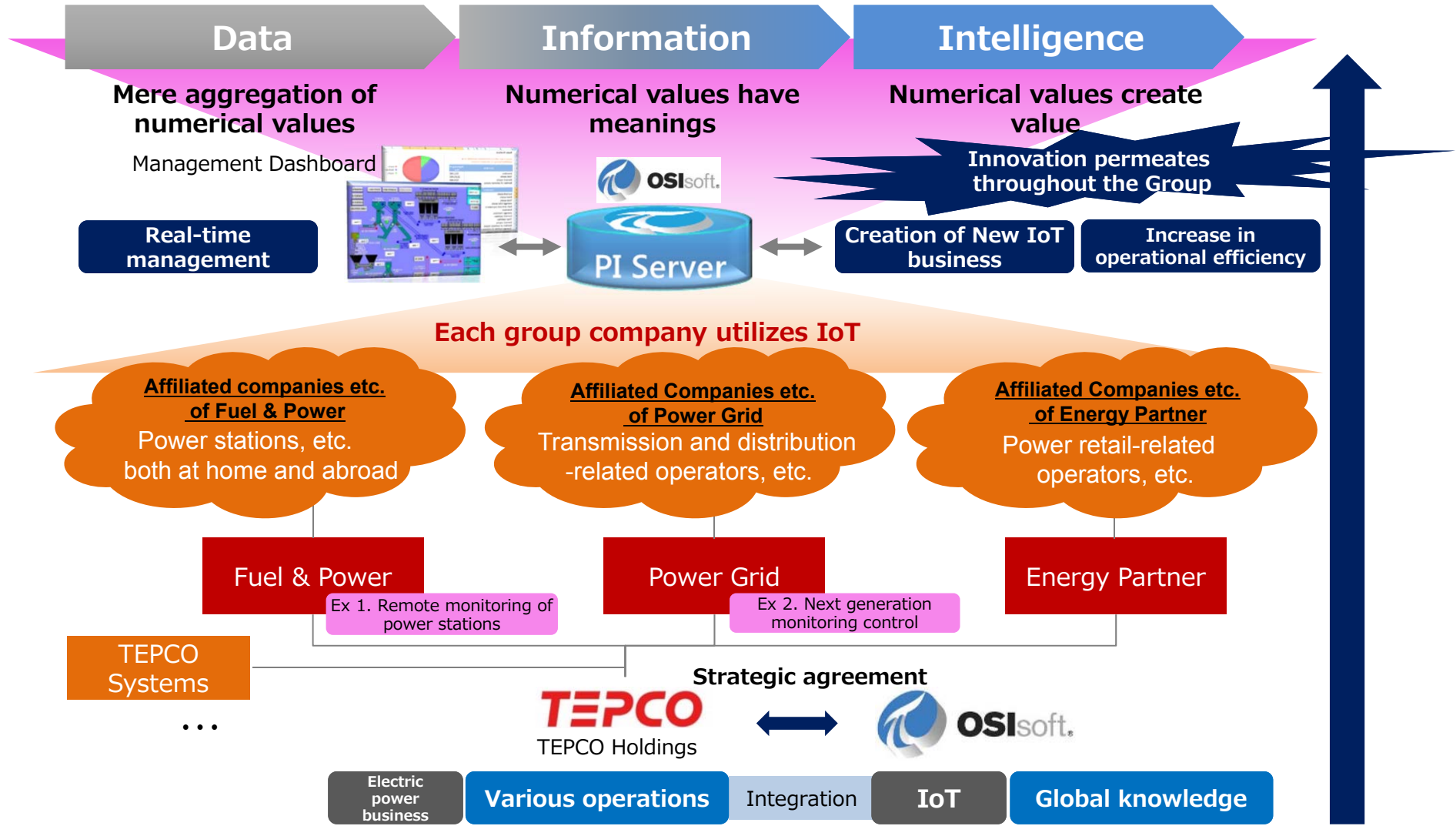


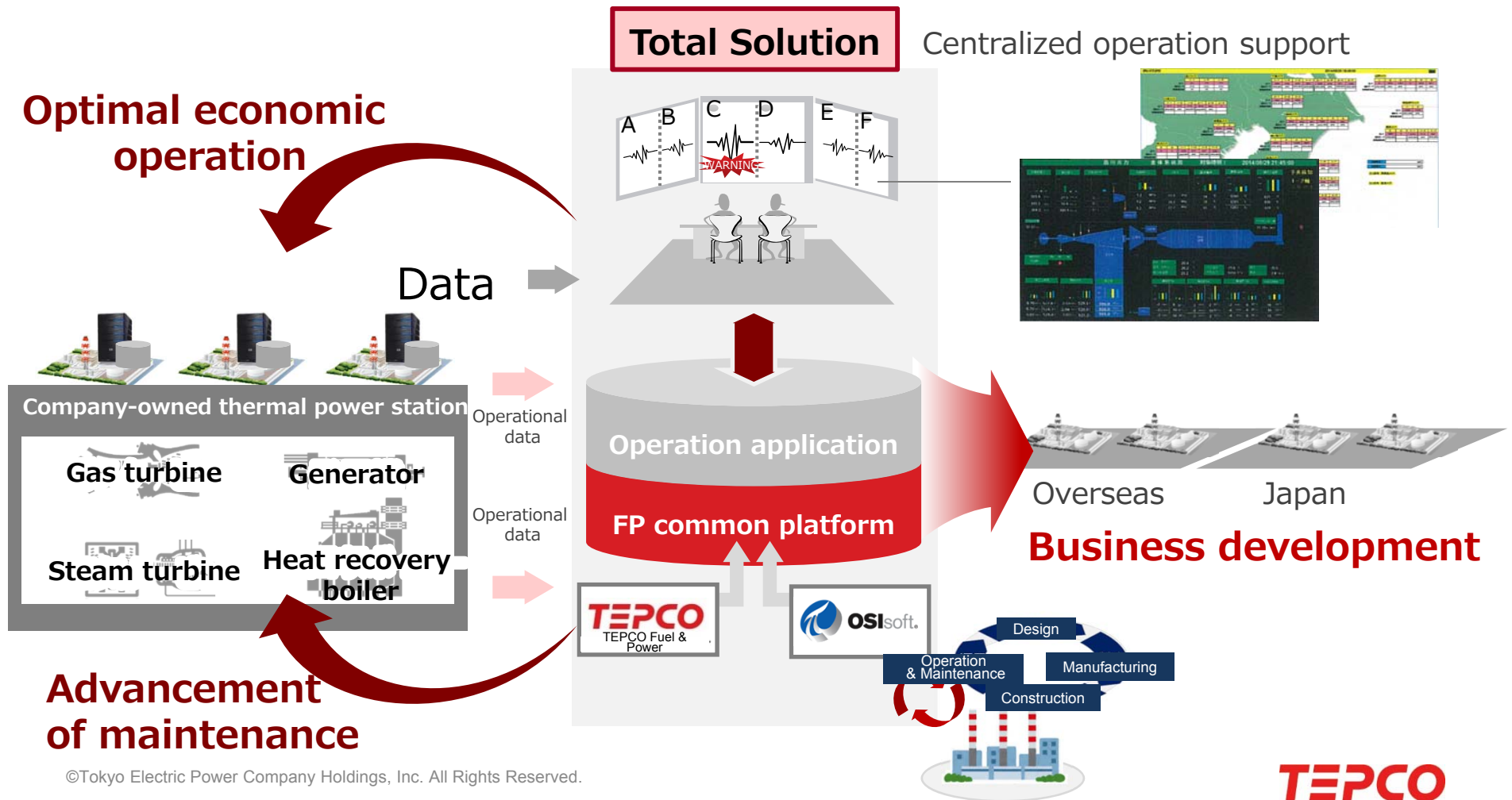
# Promoting Innovation Utilizing IoT Across Entire TEPCO Group

Through collaboration with OSIsoft, enabling real-time management and creation of new IoT-related businesses



Example 1. TEPCO Fuel & Power  
Integration of Power Station Remote Monitoring with PI System

Collaboration with OSIsoft covers the development of infrastructure for a thermal power station remote monitoring center (FP common platform). The company is developing the platform to provide services that meet its customers' needs.

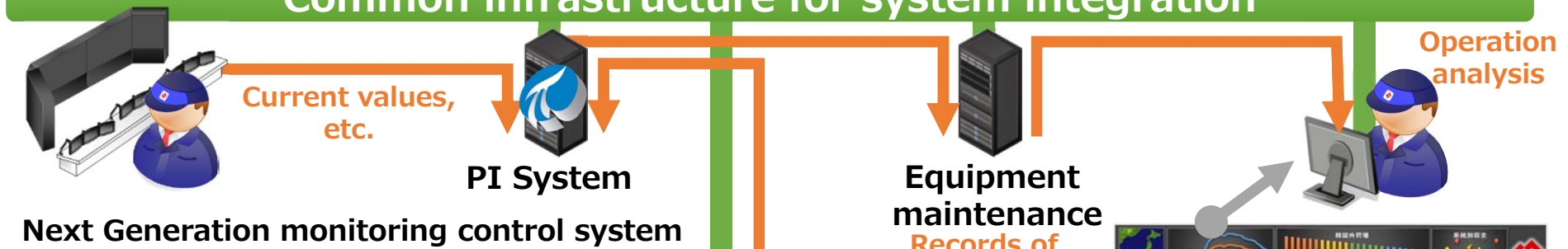


# Integration of Next Generation Monitoring Control System with PI System

OT side (Control operation)

IT side (Equipment maintenance)

Common infrastructure for system integration



IoT Network

(Example)

Oil temperature data

Oil level data

Transformer

Sensors installed for gathering data



- Power control system information
- Various sensor information
- Equipment maintenance information

Information



PI System

Intelligence

- Visualization of management resources
- Preventive & predictive maintenance
- Big Data analysis

**Convert data into information, then transform it into intelligence to create value**