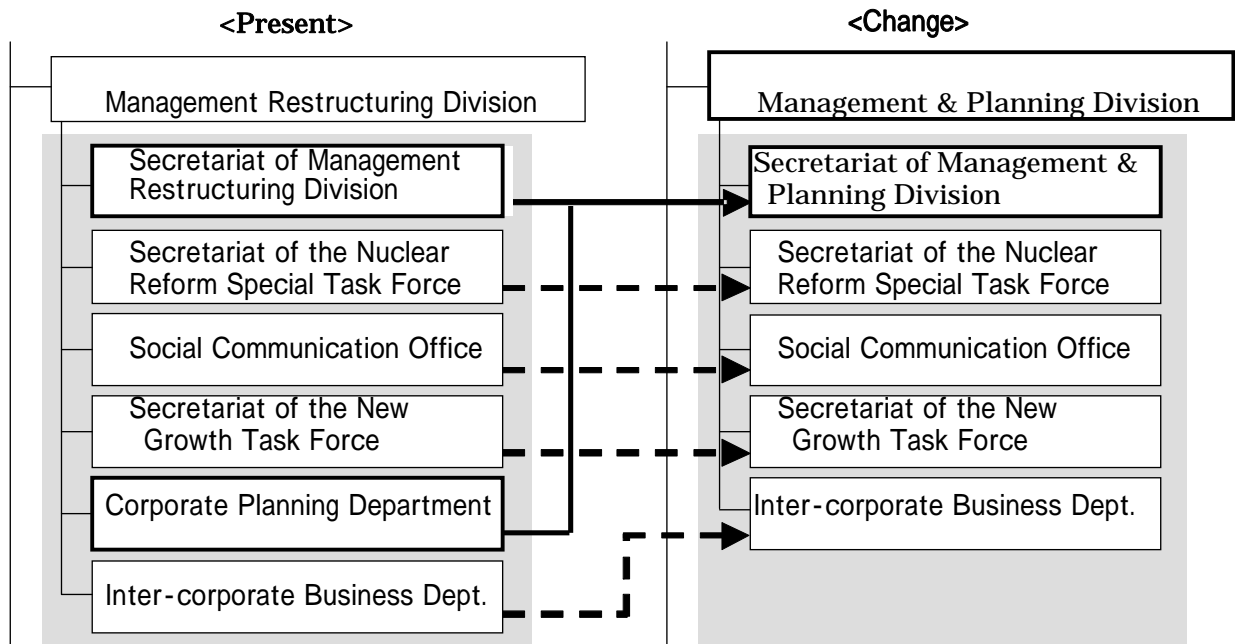
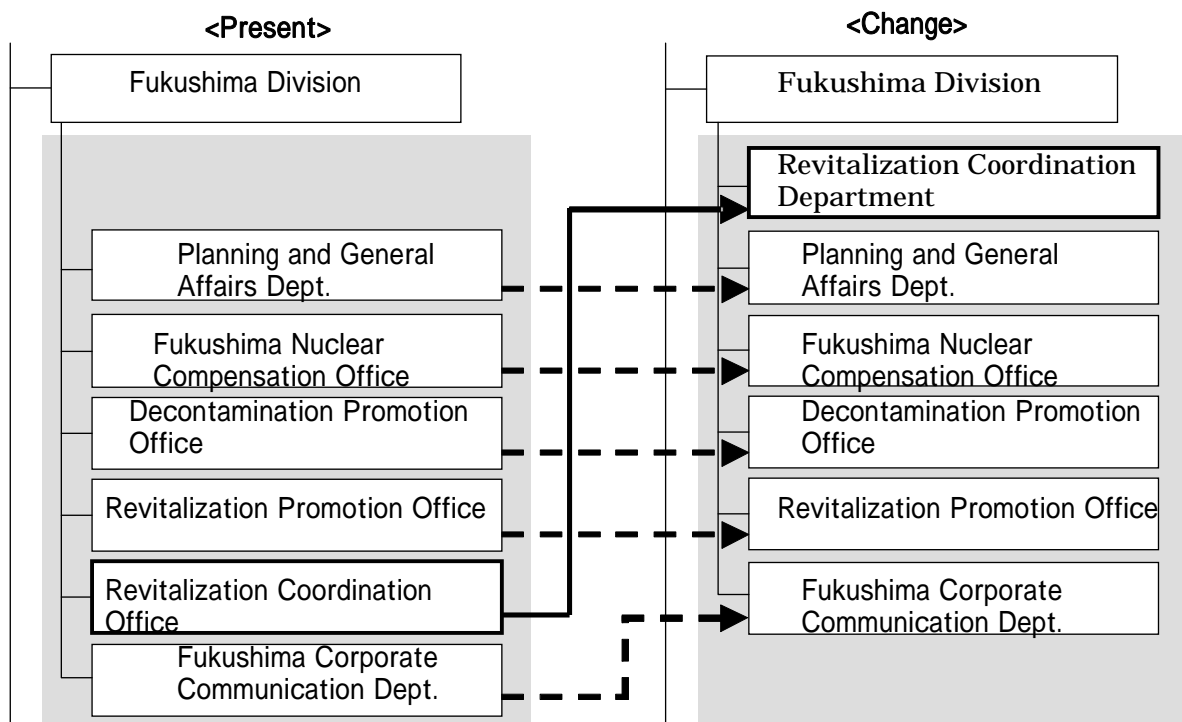


Overview: Change of Company Organization

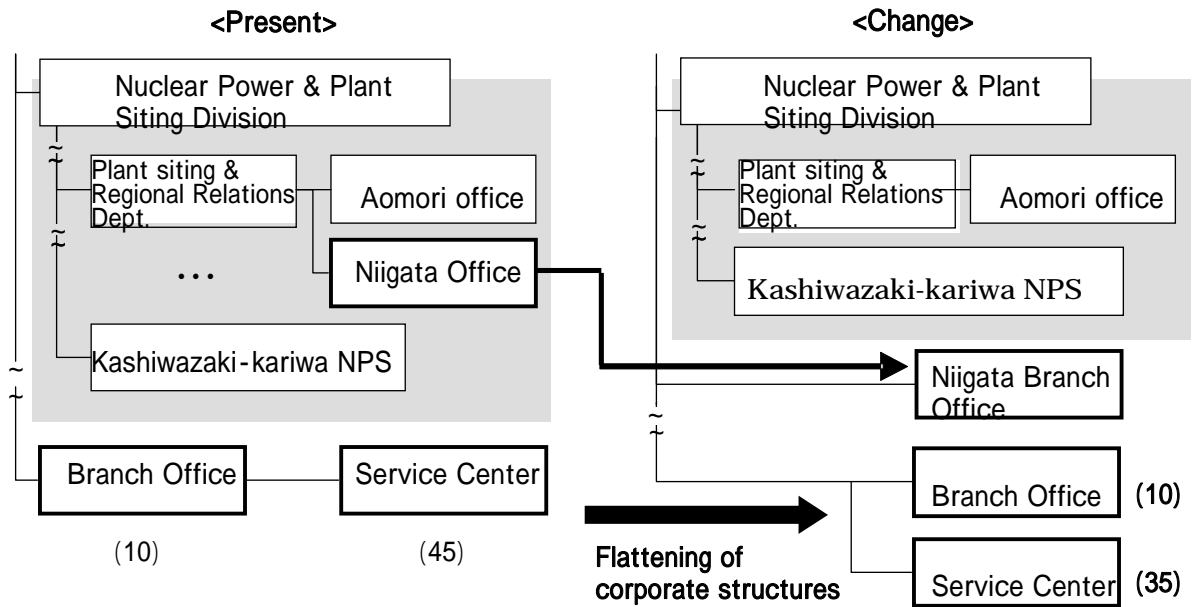
1 . Establishment of the “ Management & Planning Division, ” “ Secretariat of Management & Planning Division ” (Aiming the end of June, 2014)



2 .Establishment of the “ Revitalization Coordination Department ” (Aiming the end of June, 2014)



3 . Establishment of a Branch Office framework according to the flattening of organization (Aiming July, 2015).



< Plan >

Tochigi (Utsunomiya) , Gunma (Maebashi), Ibaraki (Mito), Saitama (Saitama), Chiba (Chiba), Tokyo (Shinjuku), Tama (Hachioji), Kanagawa (Yokohama), Yamanashi (Kofu), Shizuoka (Numazu)