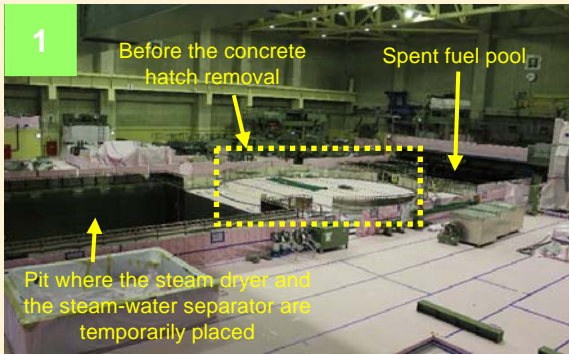


Flow of opening Unit 4 reactor (Results)

The opening of Unit 4 reactor was started on September 10. The concrete hatch, the PCV lid, the RPV lid, the steam dryer and the steam-water separator were removed in order, and the entire process was completed on September 21.

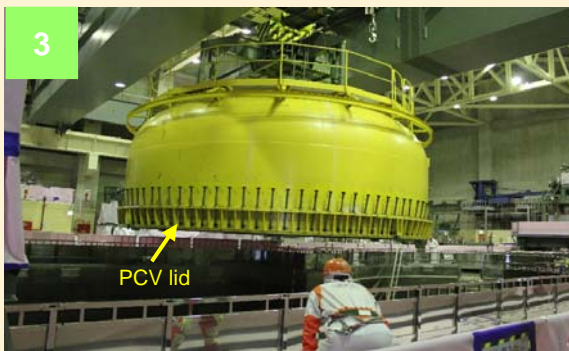
Flow of opening the reactor (Results)



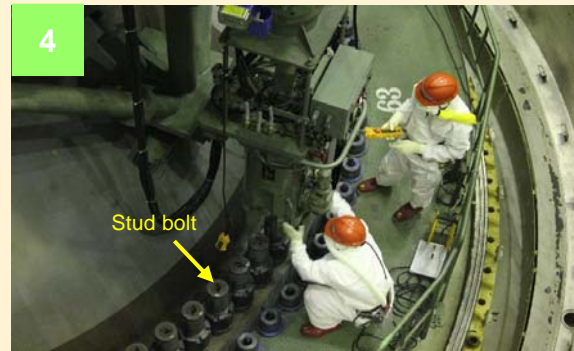
Before opening the reactor
(Photo taken on September 10, 2012)



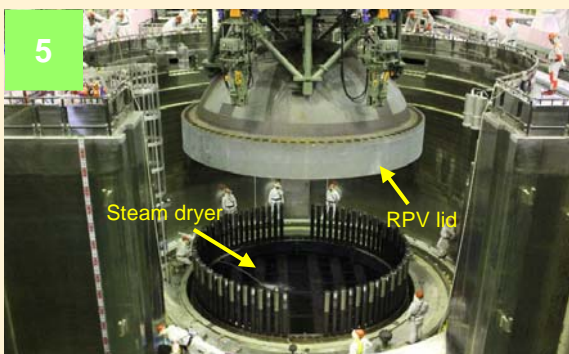
Concrete hatch removal
(Photo taken on September 10, 2012)



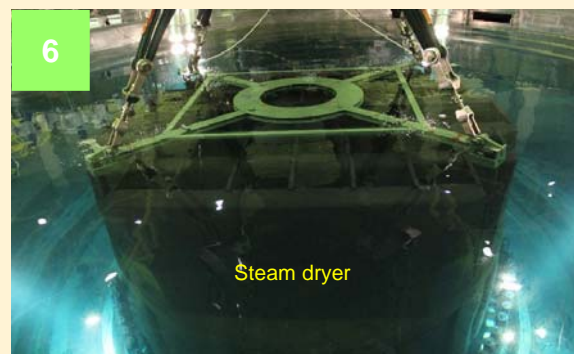
PCV lid removal
(Photo taken on September 11, 2012)



Loosening the RPV stud bolts
(Photo taken on September 13, 2012)



RPV lid removal
(Photo taken on September 14, 2012)

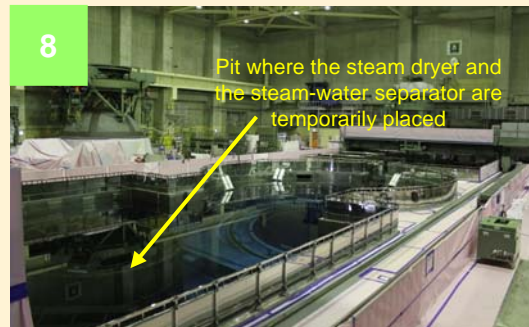


Steam dryer removal
(Photo taken on September 19, 2012)

Flow of opening Unit 4 reactor (Results) (Cont'd)



Steam-water separator removal
(Photo taken on September 21, 2012)

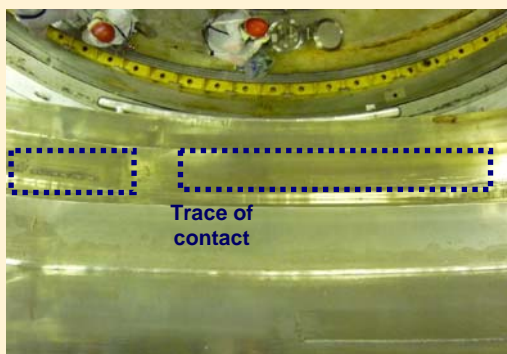
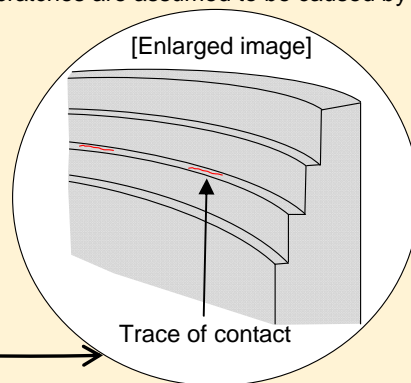
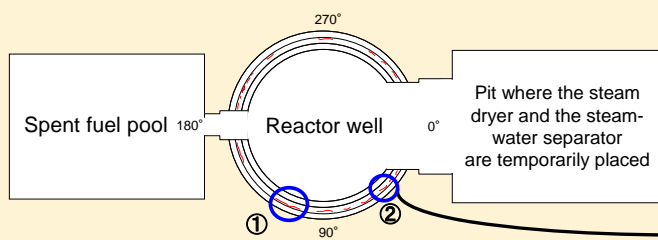


After the reactor was opened
(Photo taken on September 22, 2012)

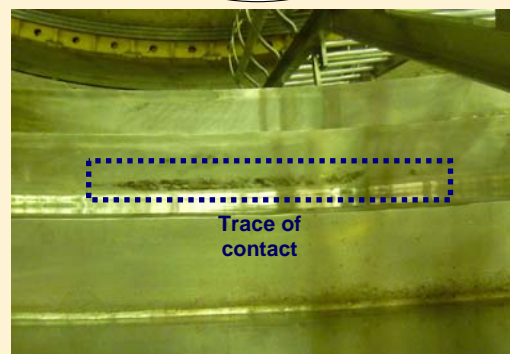
Issues Found

Traces of contact (scratches) were found on the surface of the second step (on almost all circumferences) where the concrete hatch was installed on. (Previously announced on our web page on September 13, 2012 [Discussed at the Non-conformances Management Committee on September 12]) As the scratches found were quite superficial, they have no negative impact on the soundness of the reactor. The scratches are assumed to be caused by the ground motion of the Tohoku-Chihou-Taiheiyou-Oki Earthquake.

[Overview of the reactor well* (Plan view)]



Trace of contact ①
(Photo taken on September 11, 2012)



Trace of contact ②
(Photo taken on September 11, 2012)

* Reactor well

Space where the RPV and PCV lids are installed. The space needs to be filled with water when moving the fuel.