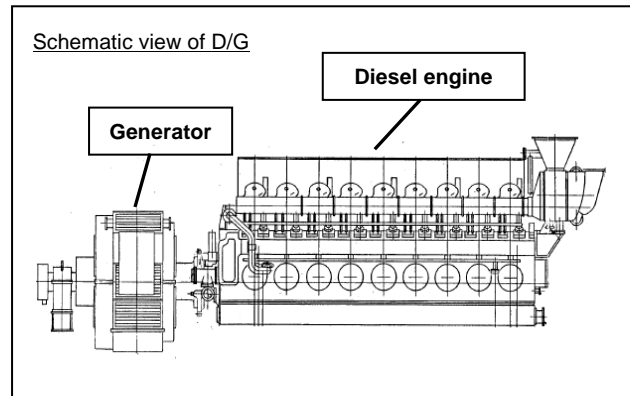
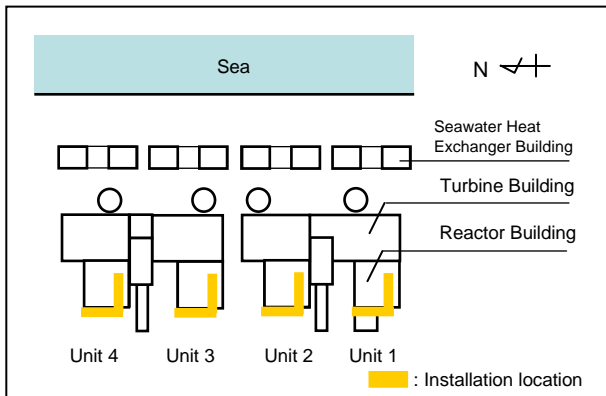


The Current Statuses of Unit 1-4 Emergency Diesel Generators (D/G): 12 units

Unit 1-4 emergency diesel generators (hereinafter referred to as D/G) are installed on the second basement of the Reactor Building annex of each unit (3 for each). Due to the Tsunami generated by Tohoku-Chihou-Taiheiyou-Oki Earthquake, all 3 D/G installed in Unit 1 (A, B, H) were flooded. Those in Unit 2-4 (A, B, H) were not flooded, however, all of these except for Unit 3 D/G (B, H) and Unit 4 D/G (H) became unavailable after the Tsunami with other equipments (such as the power panel in the Seawater Heat Exchanger Building and the auxiliary pump) being flooded. Recovery work has progressed steadily, and 9 D/G except for Unit 1 D/G (A, H) and Unit 2 D/G (H) are currently in standby state (available).

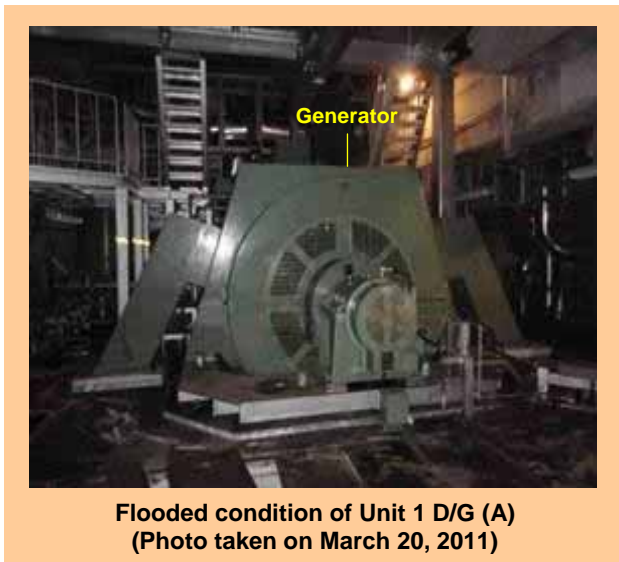


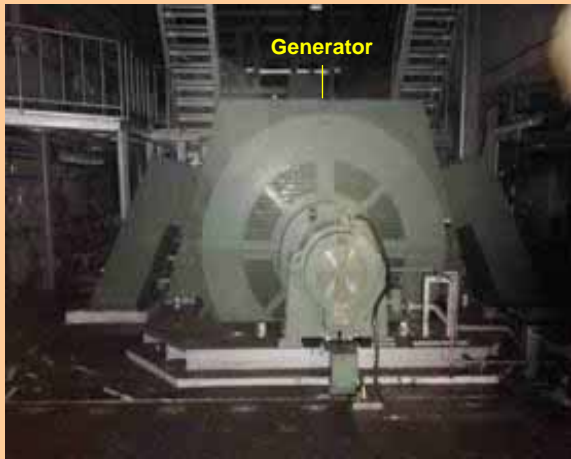
Flooded Conditions of D/G Due to Tsunami and the Current Statuses

		Unit 1			Unit 2			Unit 3			Unit 4		
Equipment	System	Flooded?	Condition right after the Tsunami	Current condition (As of the end of April 2012)	Flooded?	Condition right after the Tsunami	Current condition (As of the end of April 2012)	Flooded?	Condition right after the Tsunami	Current condition (As of the end of April 2012)	Flooded?	Condition right after the Tsunami	Current condition (As of the end of April 2012)
Emergency diesel generator	A	Yes	NG	NG	No	NG	OK (Recovered on Aug 8, 2011)	No	NG	OK (Recovered on Aug 31, 2011)	No	NG	OK (Recovered on Aug 3, 2011)
	B	Yes	NG	OK (Recovered on Jul 15, 2011)	No	NG	OK (Recovered on Mar 14, 2011)	No	OK	OK	No	NG	OK (Recovered on Mar 14, 2011)
	H	Yes	NG	NG	No	NG	NG	No	OK	OK	No	OK	OK

OK: Available
NG: Unavailable

Recovery work for Unit 1 D/G (A, H) flooded due to Tsunami





Flooded condition of Unit 1 D/G (H)
(Photo taken on March 20, 2011)



Recovery work for Unit 1 D/G (H)
(Photo taken on April 17, 2012)

D/G in standby state after recovery



Unit 1 D/G (B) (Photo taken on April 20, 2012)

D/G was flooded due to Tsunami and became unavailable.
It has been recovered on July 15, 2011 and is now in standby state.



Unit 2 D/G (A) (Photo taken on April 20, 2012)

Though D/G itself was not flooded, it became unavailable right after the Tsunami with other equipments (such as the power panel in the Seawater Heat Exchanger Building and auxiliary pump) being flooded.
It has been recovered on August 8, 2011 and is now in standby state.



Unit 3 D/G (A) (Photo taken on April 17, 2012)

Though D/G itself was not flooded, it became unavailable right after the Tsunami with other equipments (such as the power panel in the Seawater Heat Exchanger Building and auxiliary pump) being flooded.
It has been recovered on August 31, 2011 and is now in standby state.



Unit 4 D/G (A) (Photo taken on April 17, 2012)

Though D/G itself was not flooded, it became unavailable right after the Tsunami with other equipments (such as the power panel in the Seawater Heat Exchanger Building and auxiliary pump) being flooded.
It has been recovered on August 3, 2011 and is now in standby state.