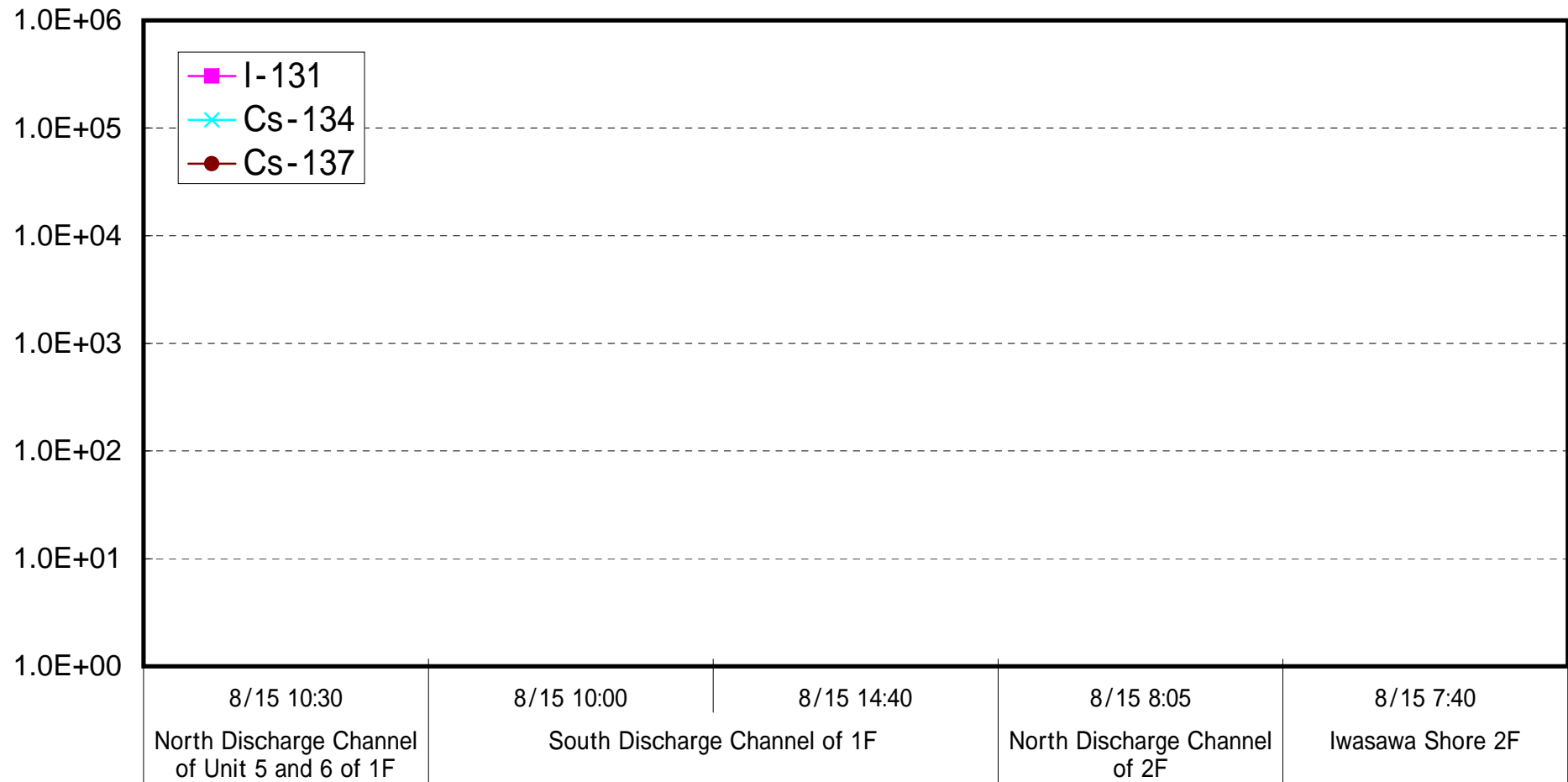
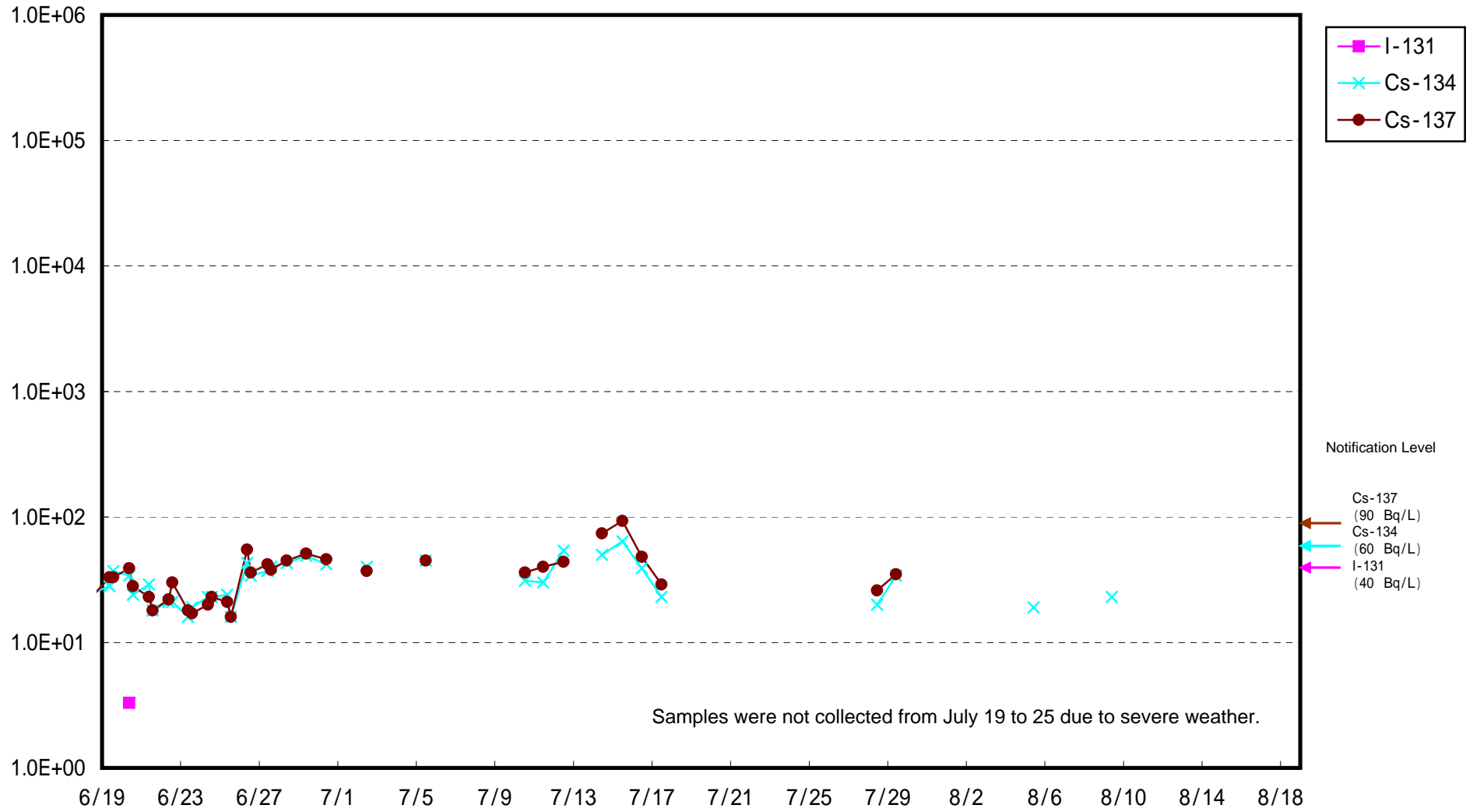


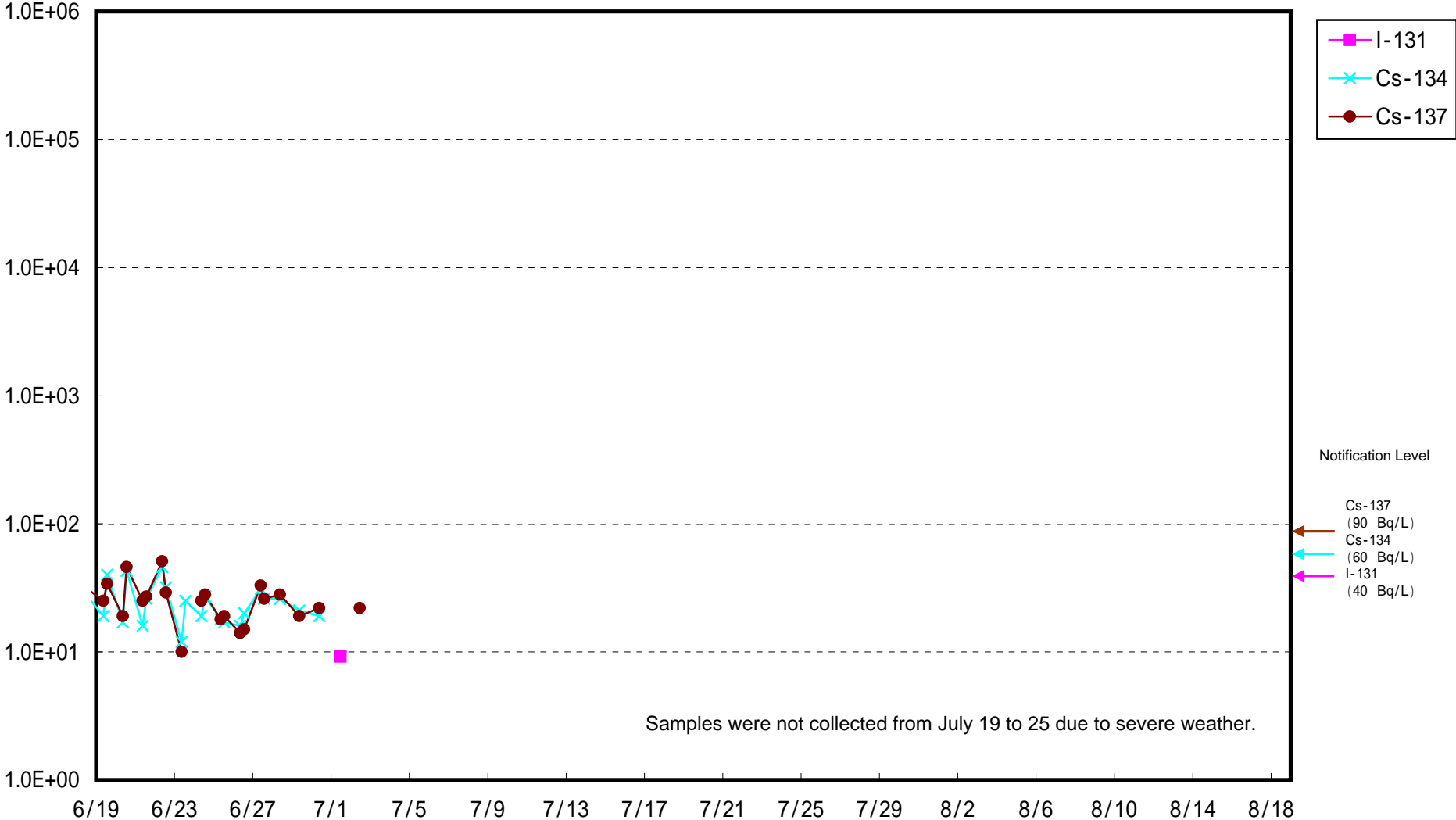
Radioactivity Density of Seawater (Bq/L)



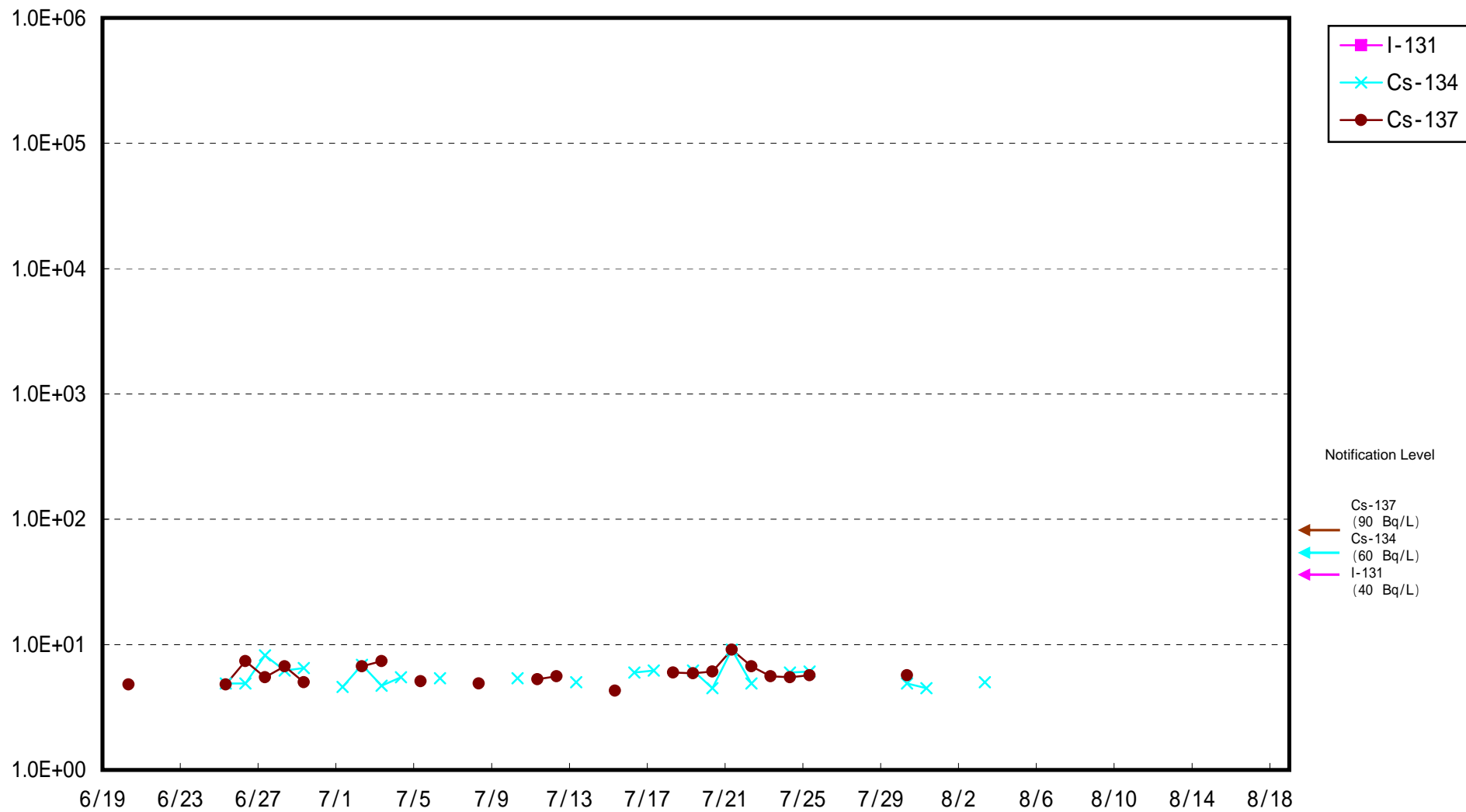
Radioactivity Density of Seawater at North of 1F5-6 Discharge Channel
(Bq/L)



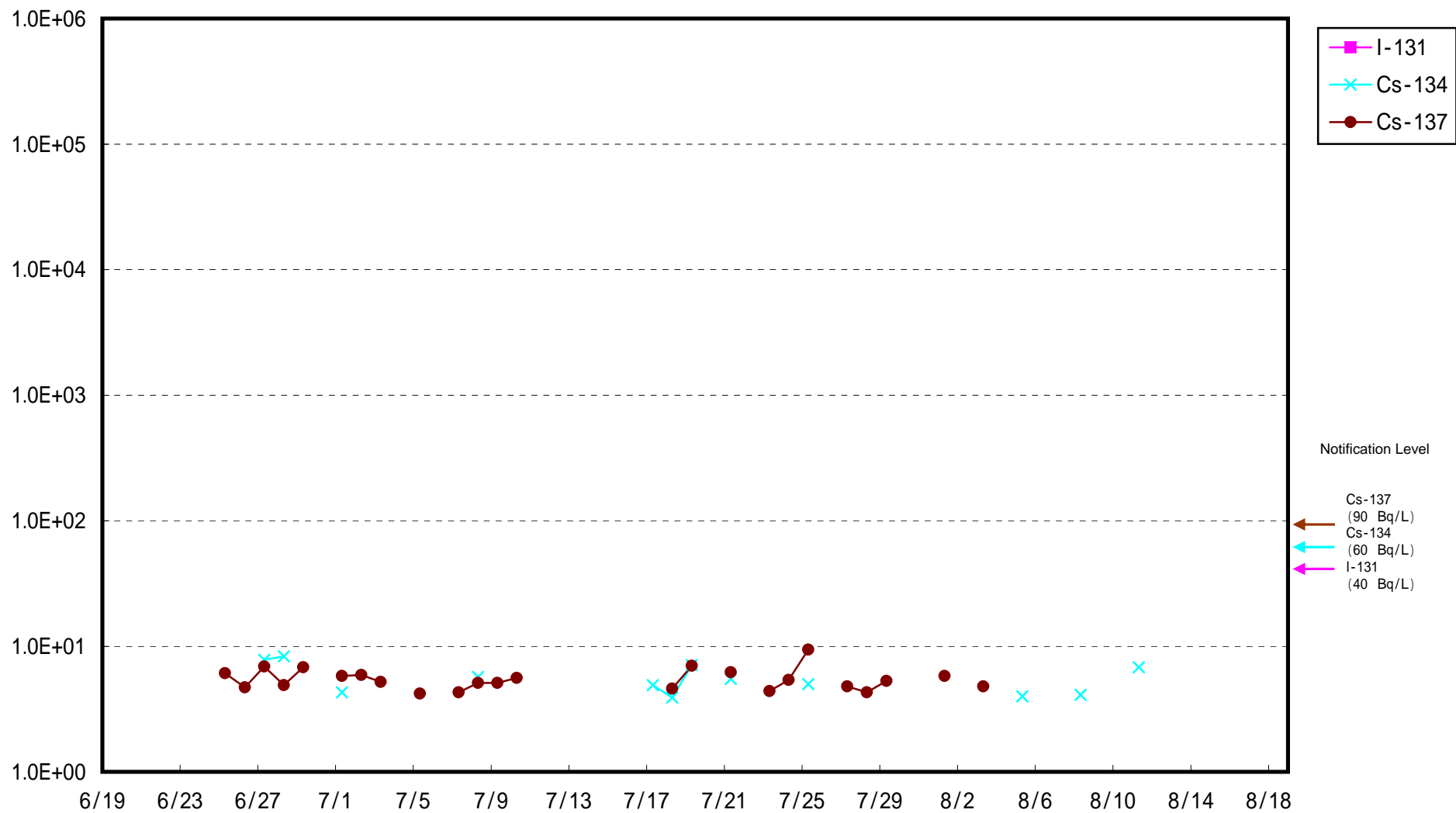
Radioactivity Density of Seawater at South Discharge Channel of 1F (Bq/L)



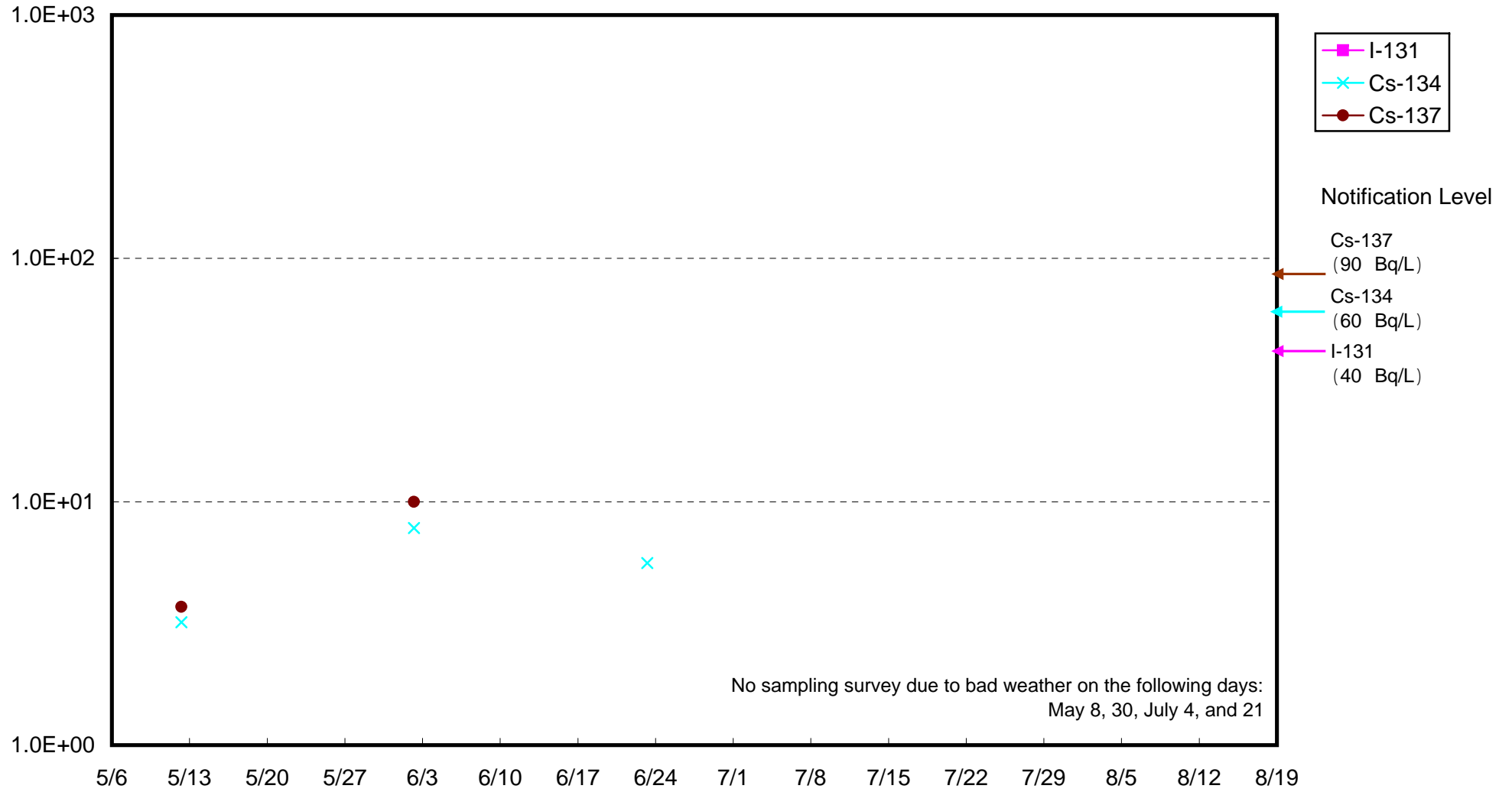
Radioactivity Density of Seawater at North Discharge Channel of 2F (Bq/L)



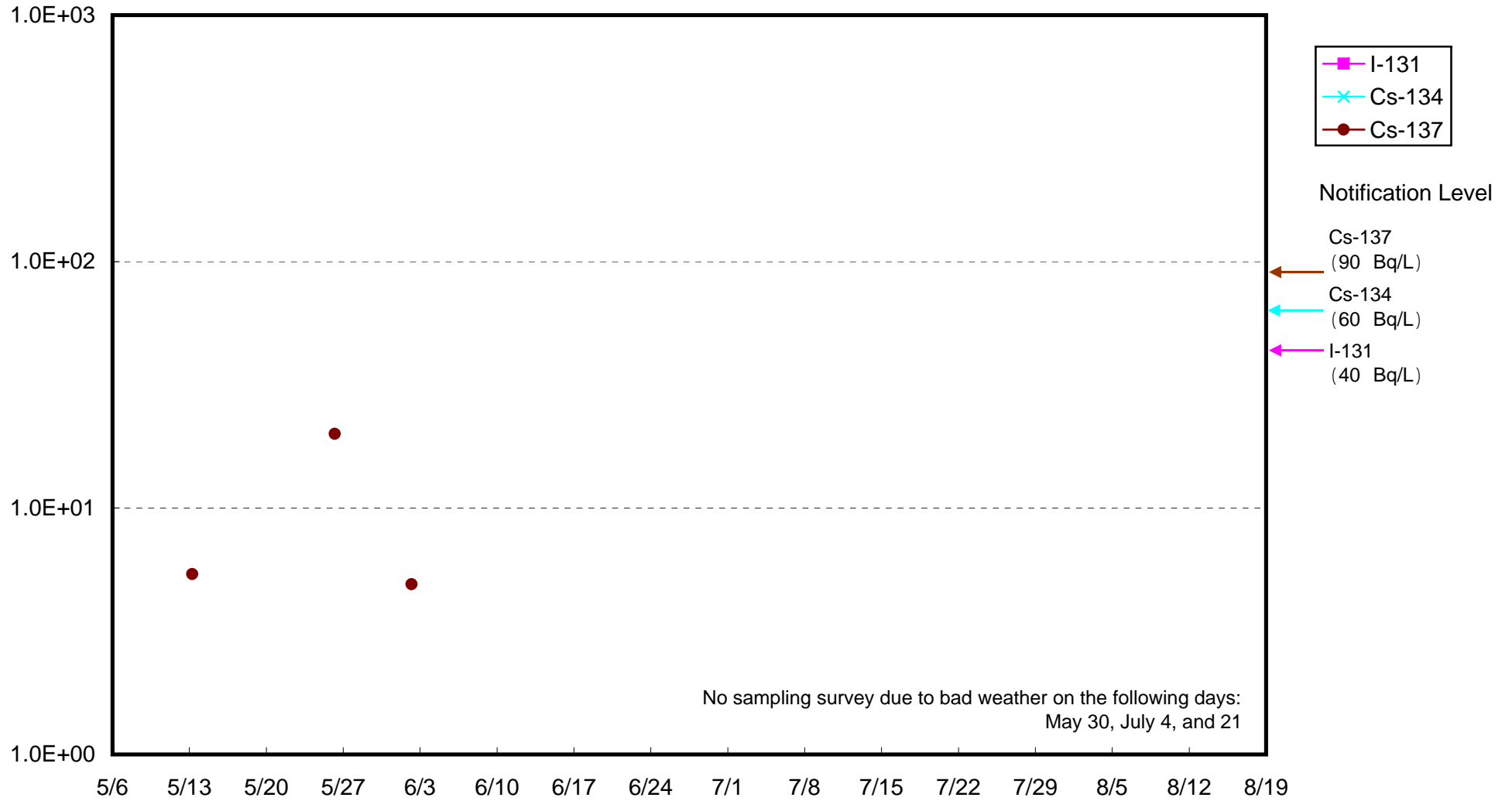
Radioactivity Density of Seawater at Iwasawa Shore 2F (Bq/L)



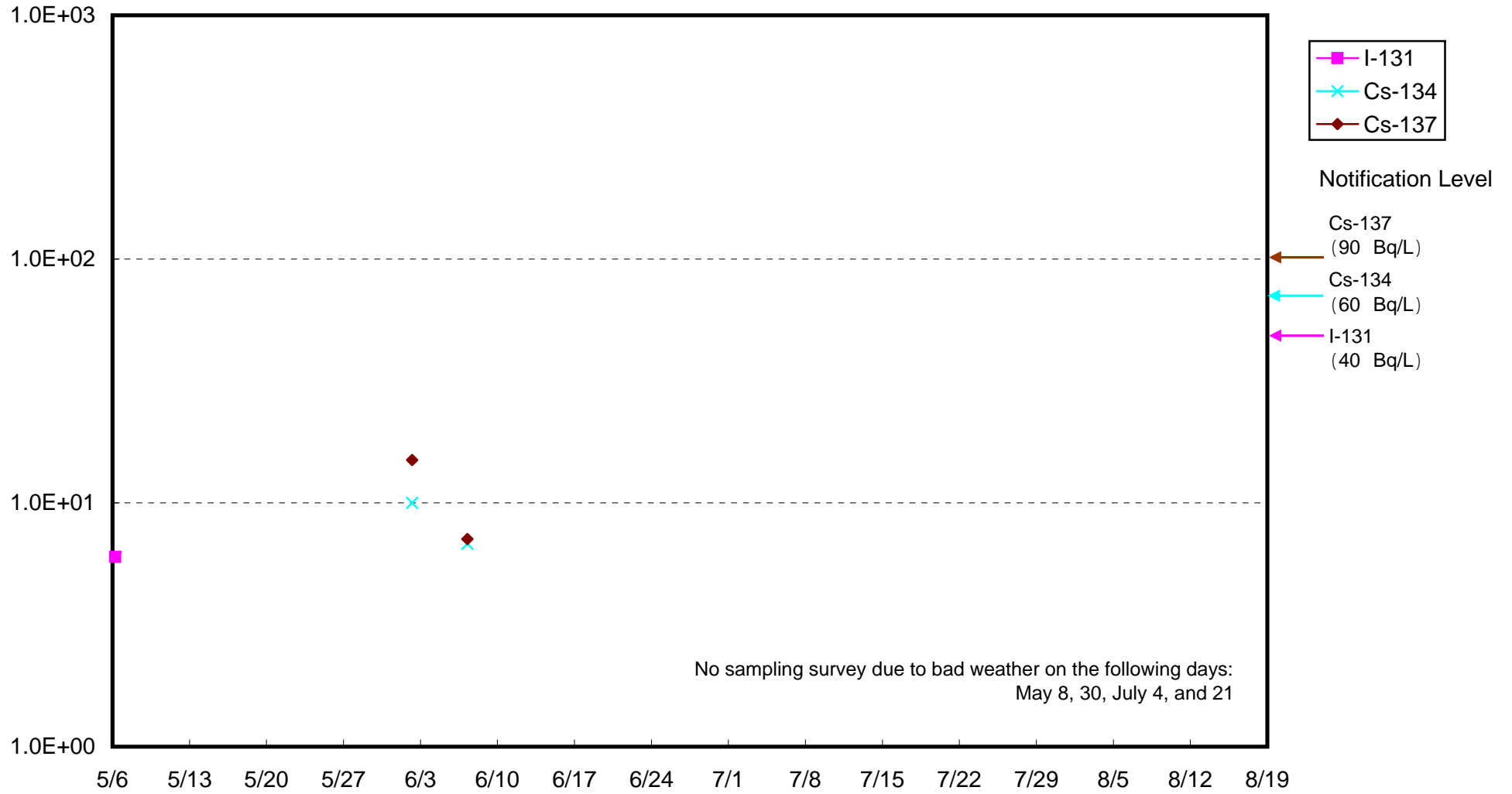
Radioactivity Density of Seawater around approx. 3 km offshore of Onahama Port Upper Layer (Bq/L)



Radioactivity Density of Seawater around approx. 3 km offshore of Onahama Port Lower Layer (Bq/L)



Radioactivity Density of Seawater around approx. 3 km offshore of Ena Upper Layer (Bq/L)



Radioactivity Density of Seawater around approx. 3 km offshore of Ena Lower Layer (Bq/L)

