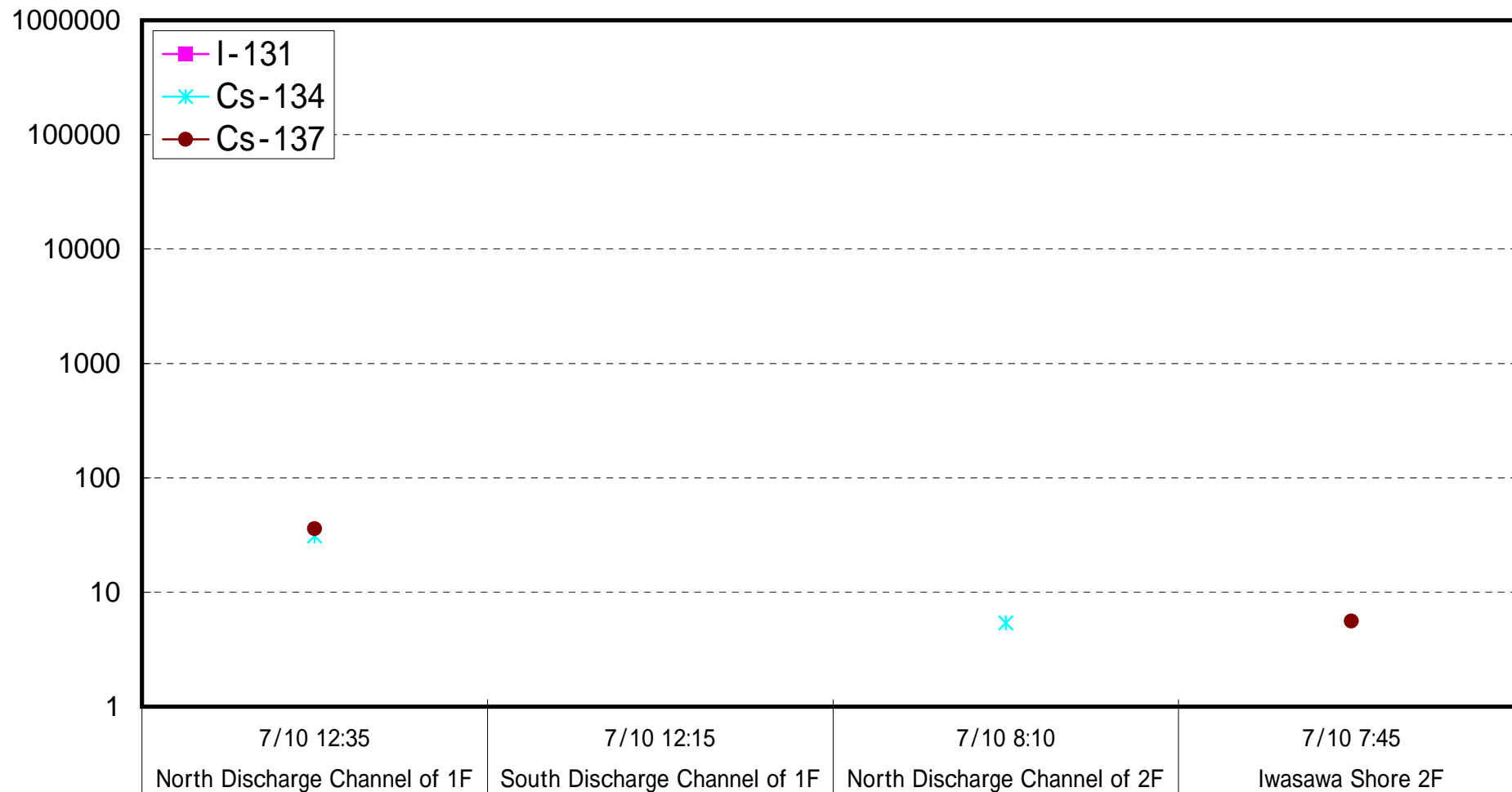
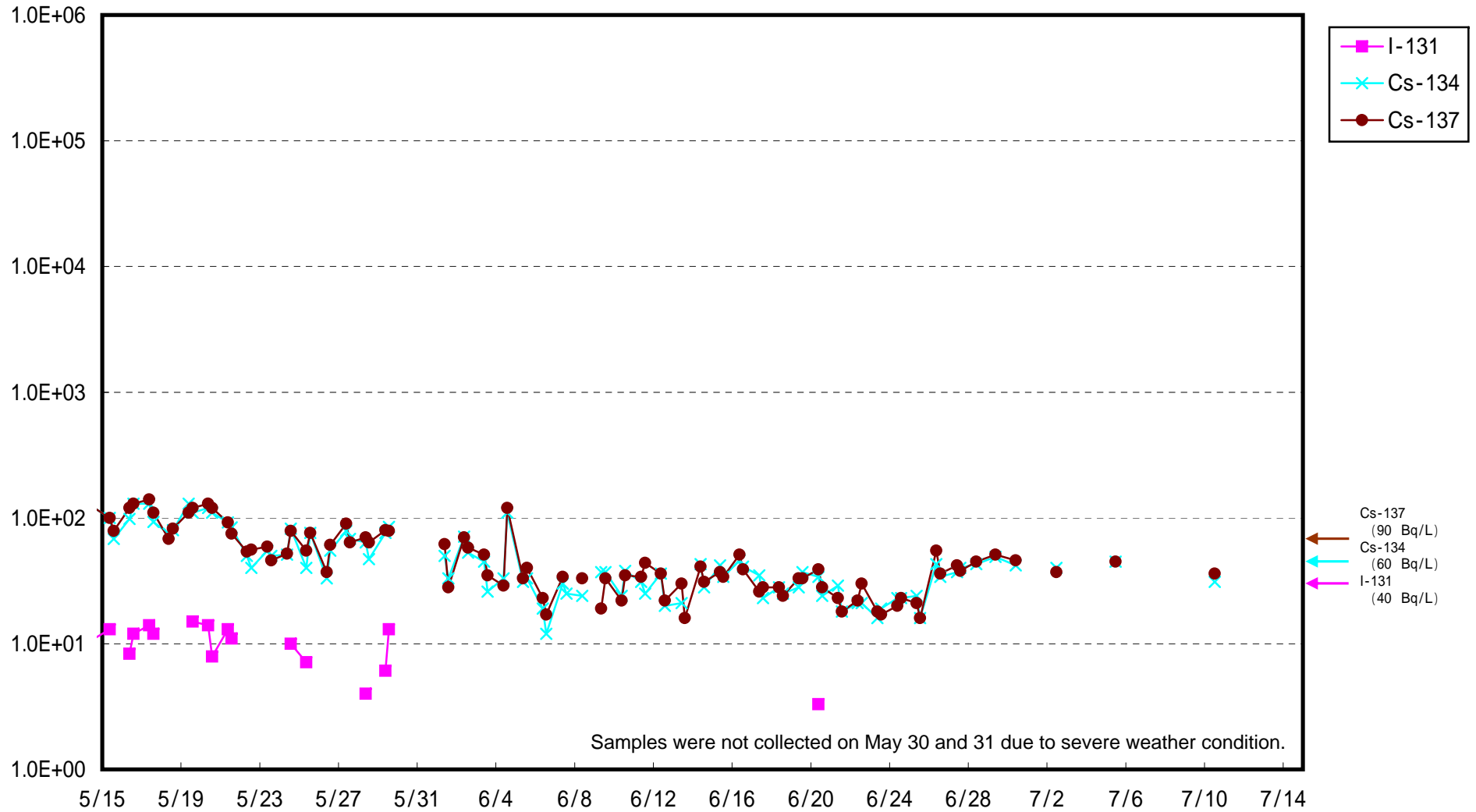


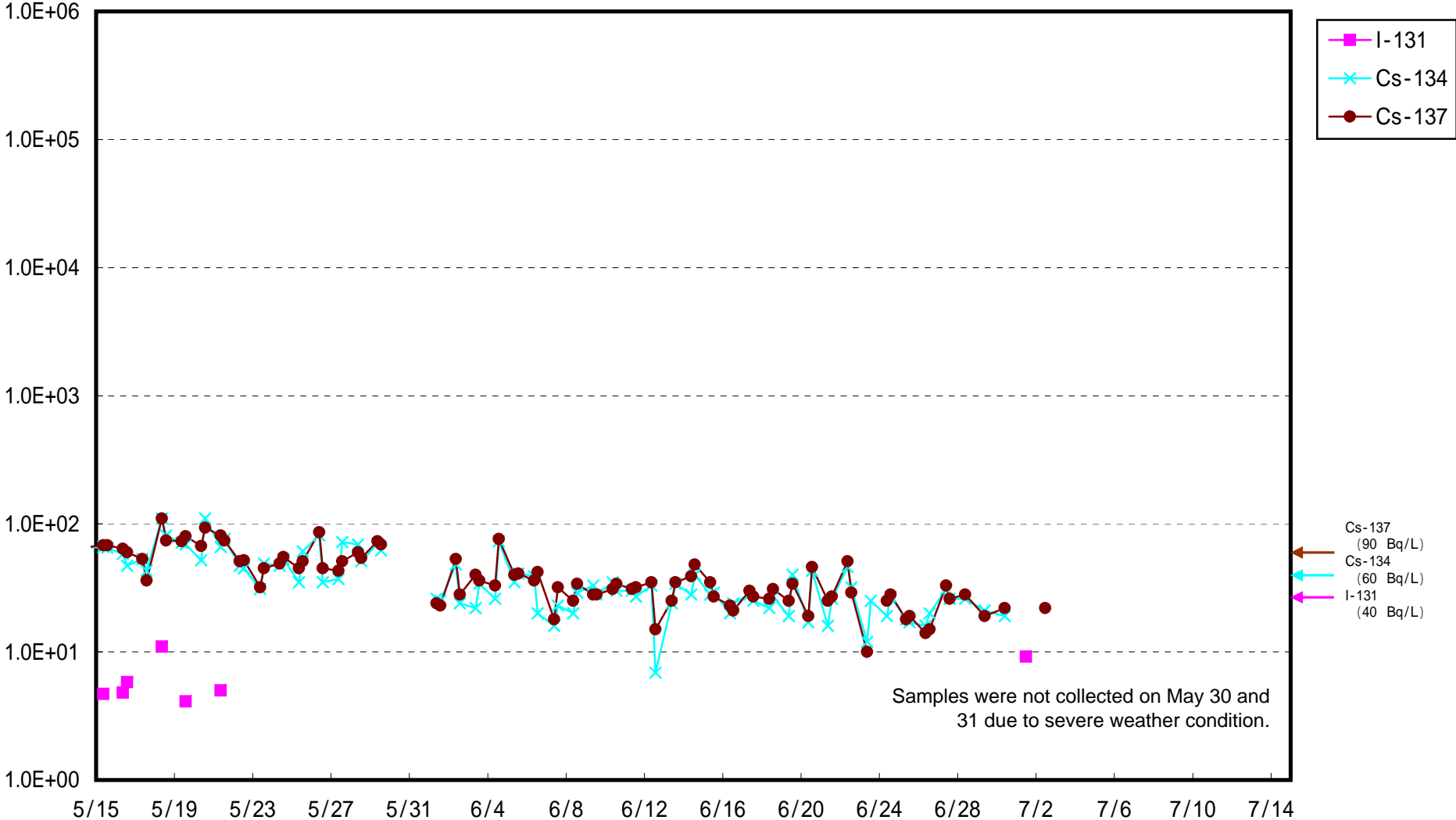
Radioactivity Density of Seawater (B q / L)



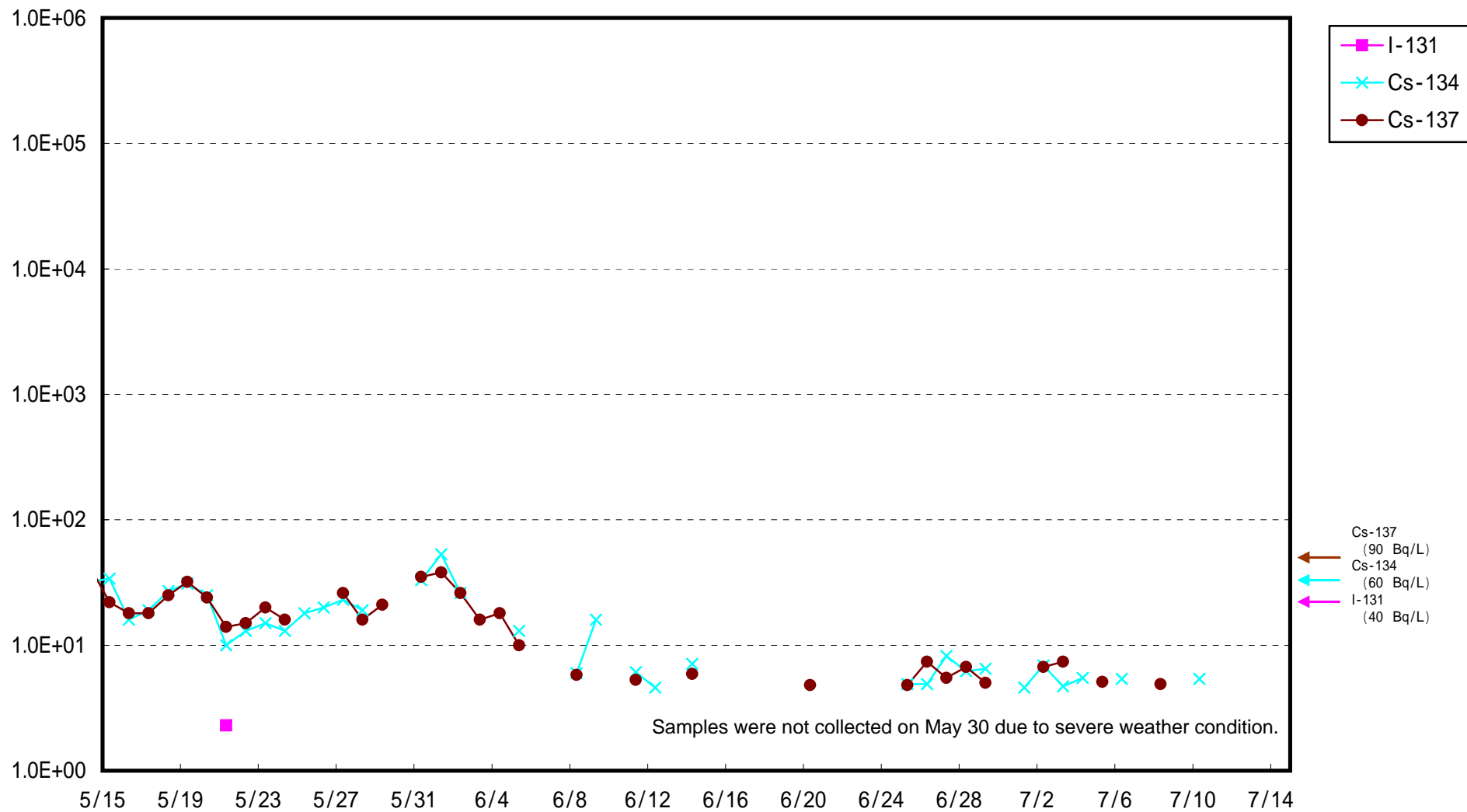
Radioactivity Density of Seawater at North of 1F5-6 Discharge Channel
(approx.30m north of 5-6 discharge channel) (Bq/L)



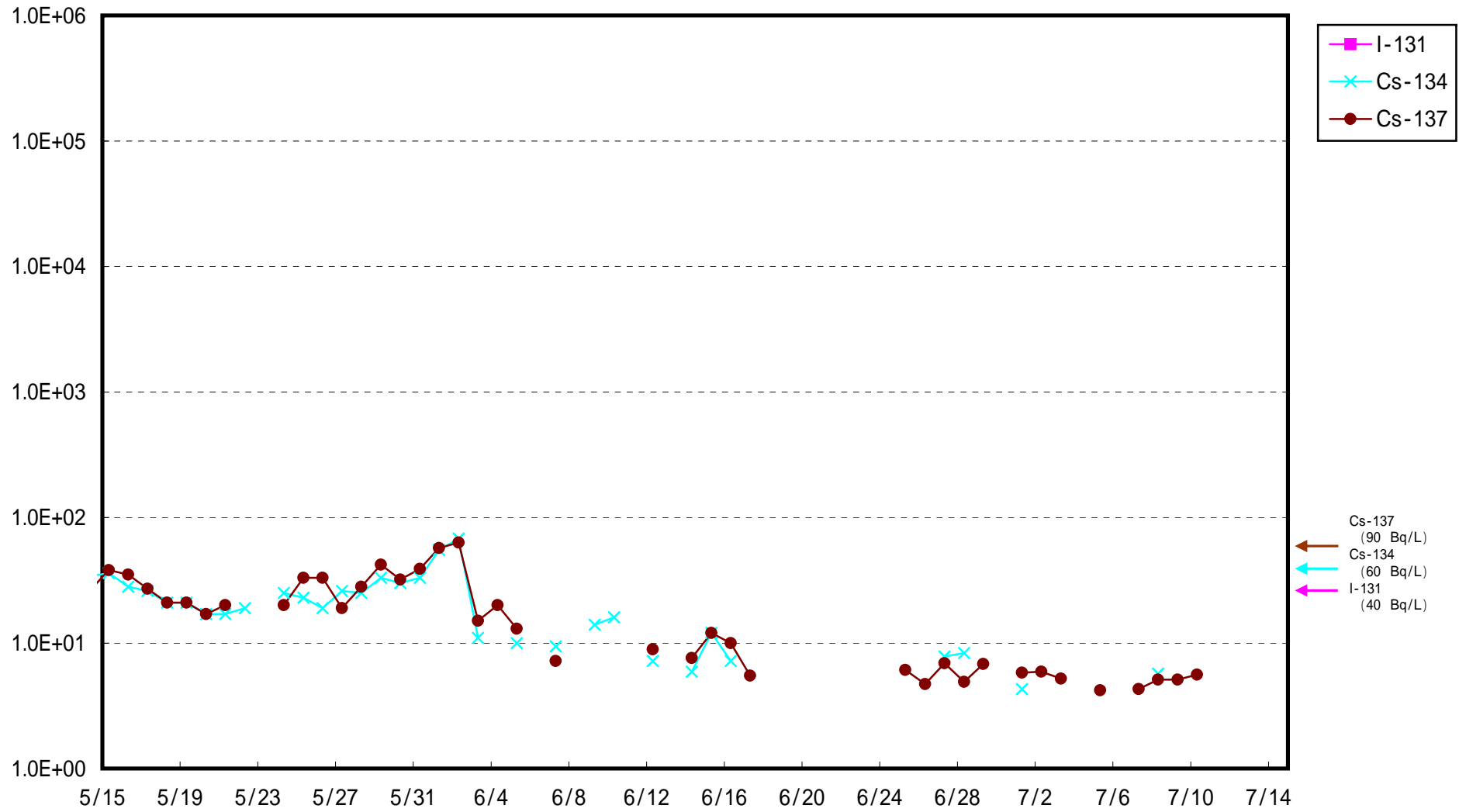
Radioactivity Density of Seawater at South Discharge Channel of 1F (Bq/L)



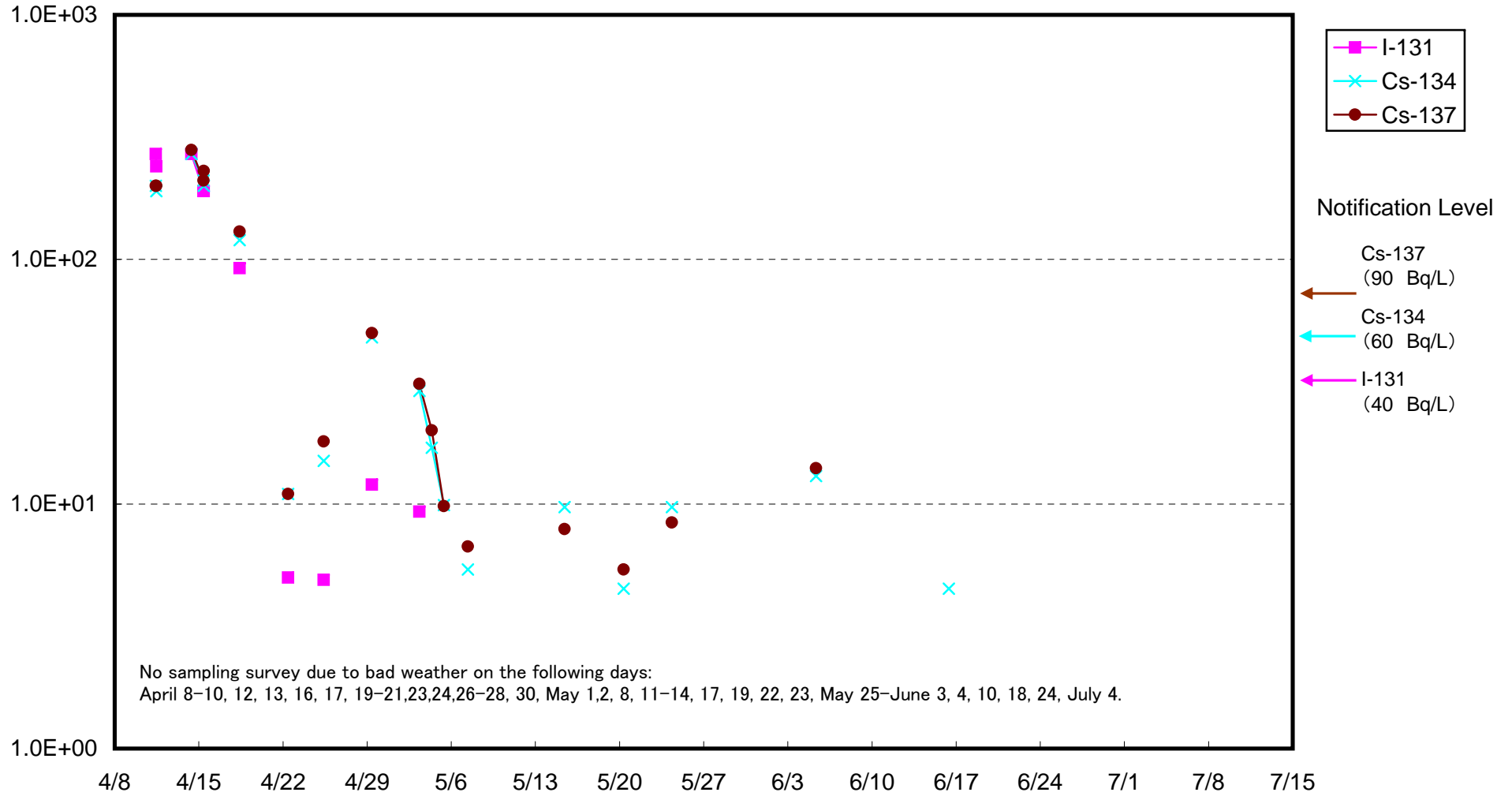
Radioactivity Density of Seawater at North Discharge Channel of 2F (Bq/L)



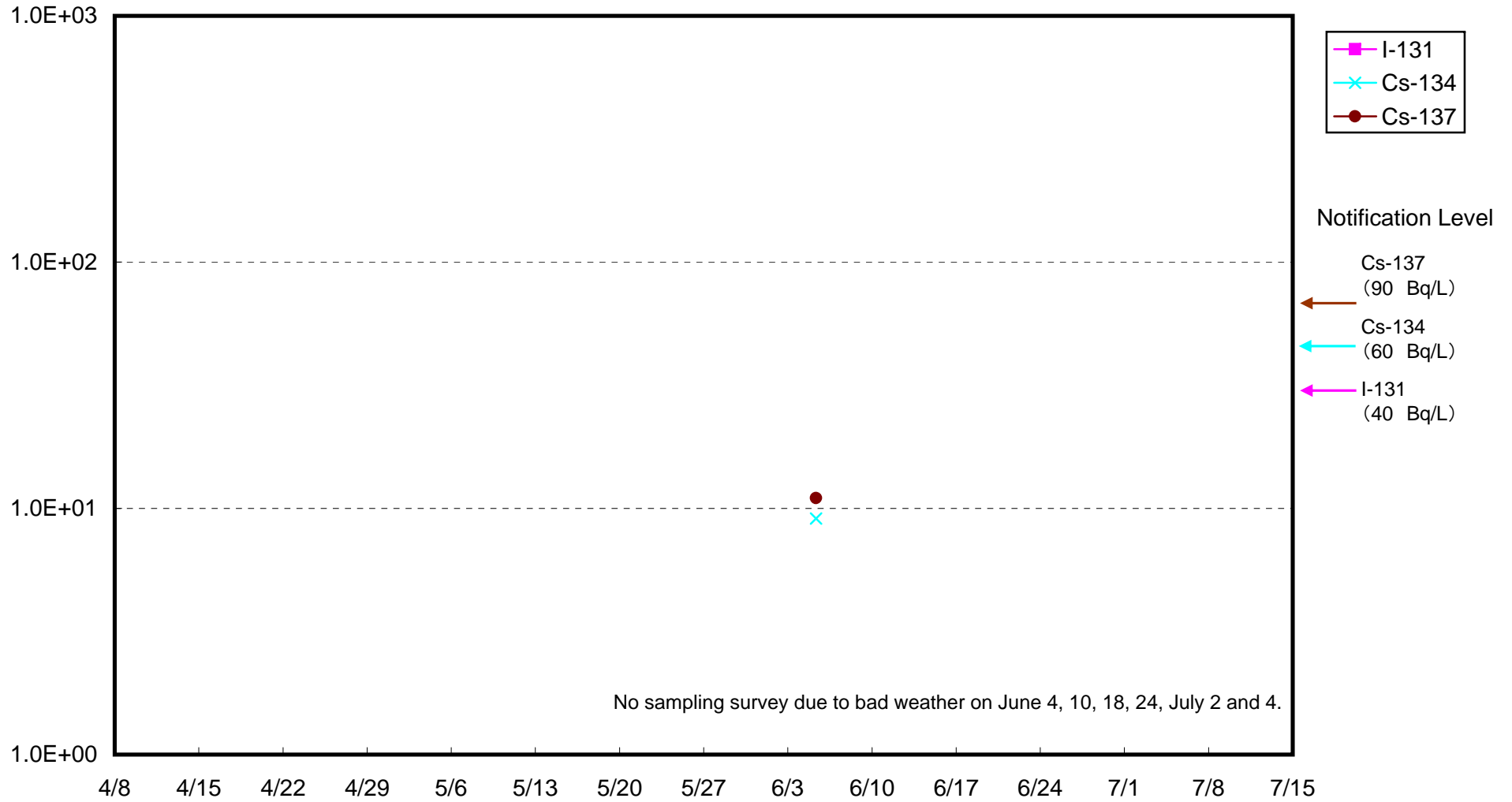
Radioactivity Density of Seawater at Iwasawa Shore 2F (Bq/L)



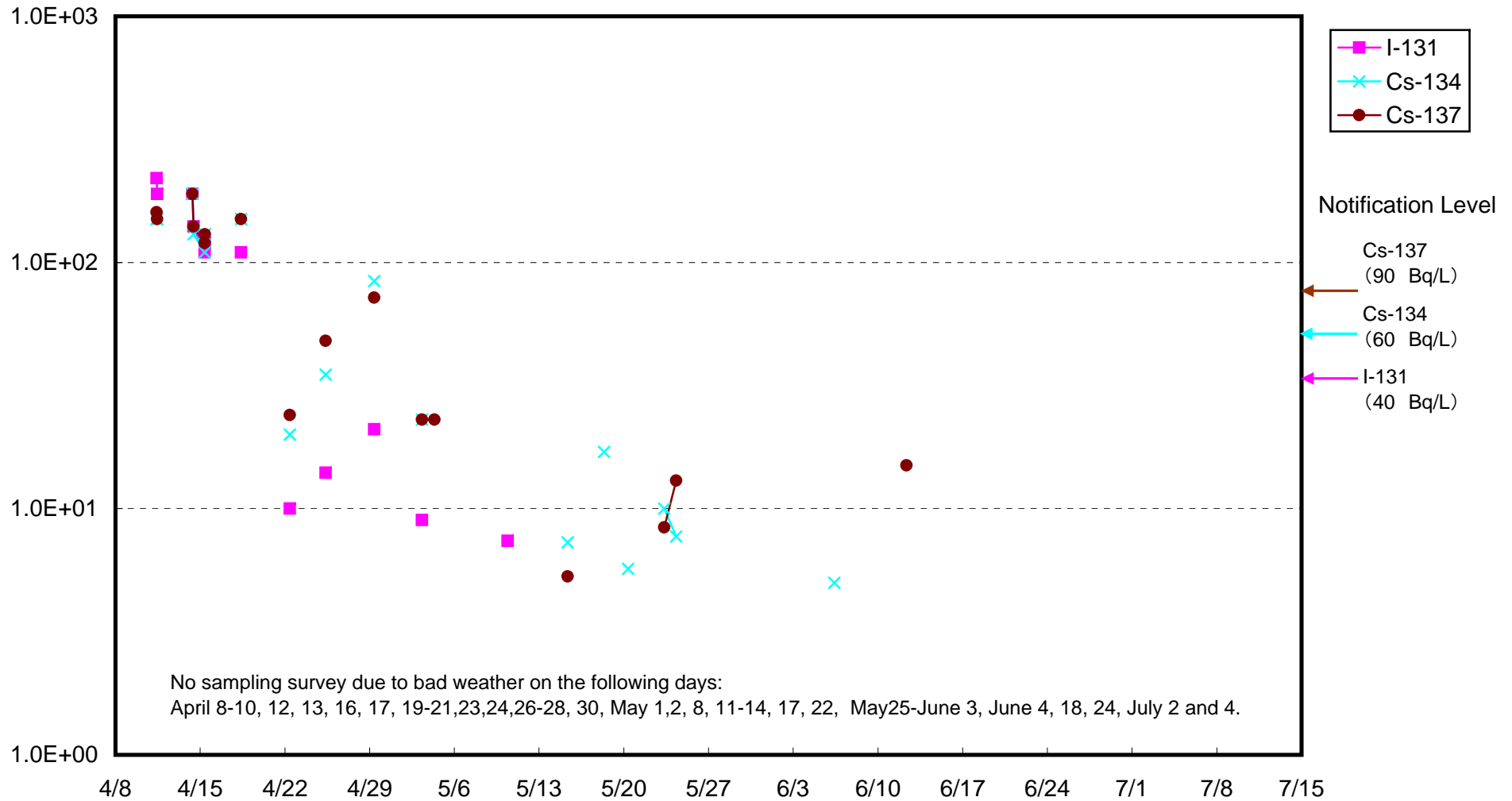
Radioactivity Density of Seawater around approx. 15 km offshore of Ukedogawa Shore upper



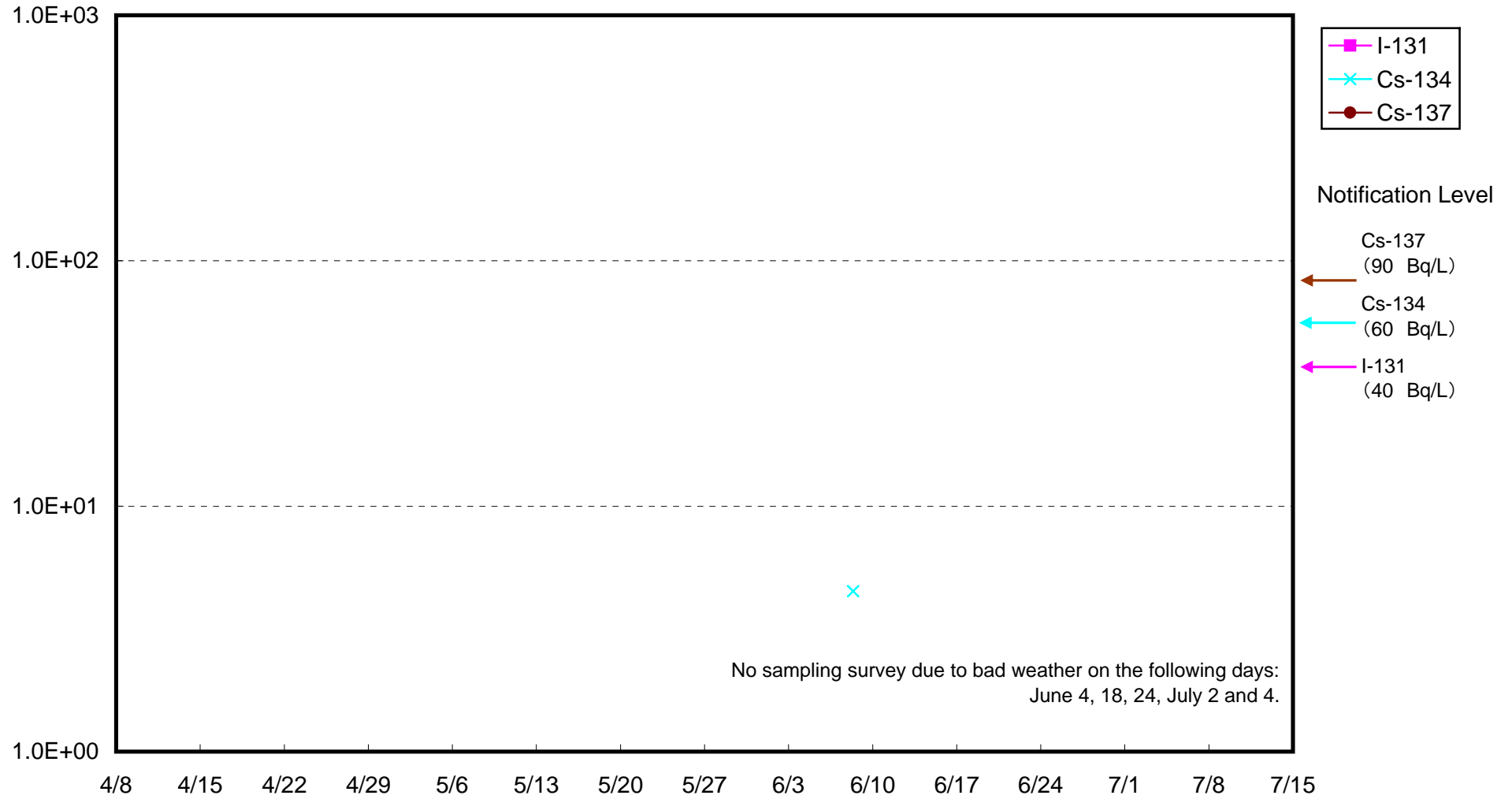
Radioactivity Density of Seawater around approx. 15 km offshore of Ukedogawa Shore lower layer (Bq/L)



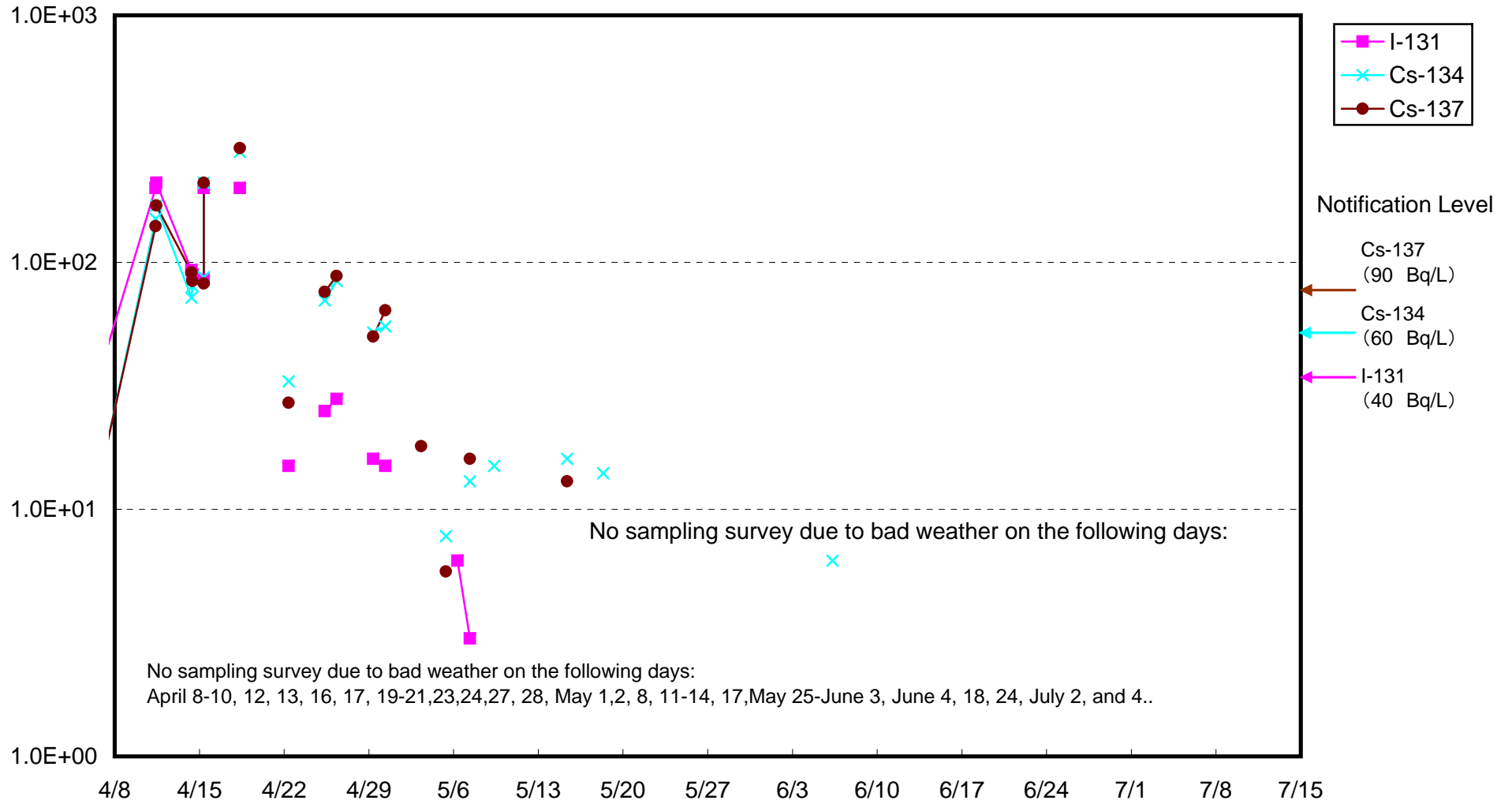
Radioactivity Density of Seawater around approx. 15 km offshore of Fukushima Daiichi Nuclear Power Station Shore upper layer



Radioactivity Density of Seawater around approx. 15 km offshore of Fukushima Daiichi Nuclear Power Station Shore
lower layer



Radioactivity Density of Seawater around approx. 15 km offshore of Fukushima Daini Nuclear Power Station Shore
upper layer



Radioactivity Density of Seawater around approx. 15 km offshore of Fukushima Daini Nuclear Power Station Shore lower layer

