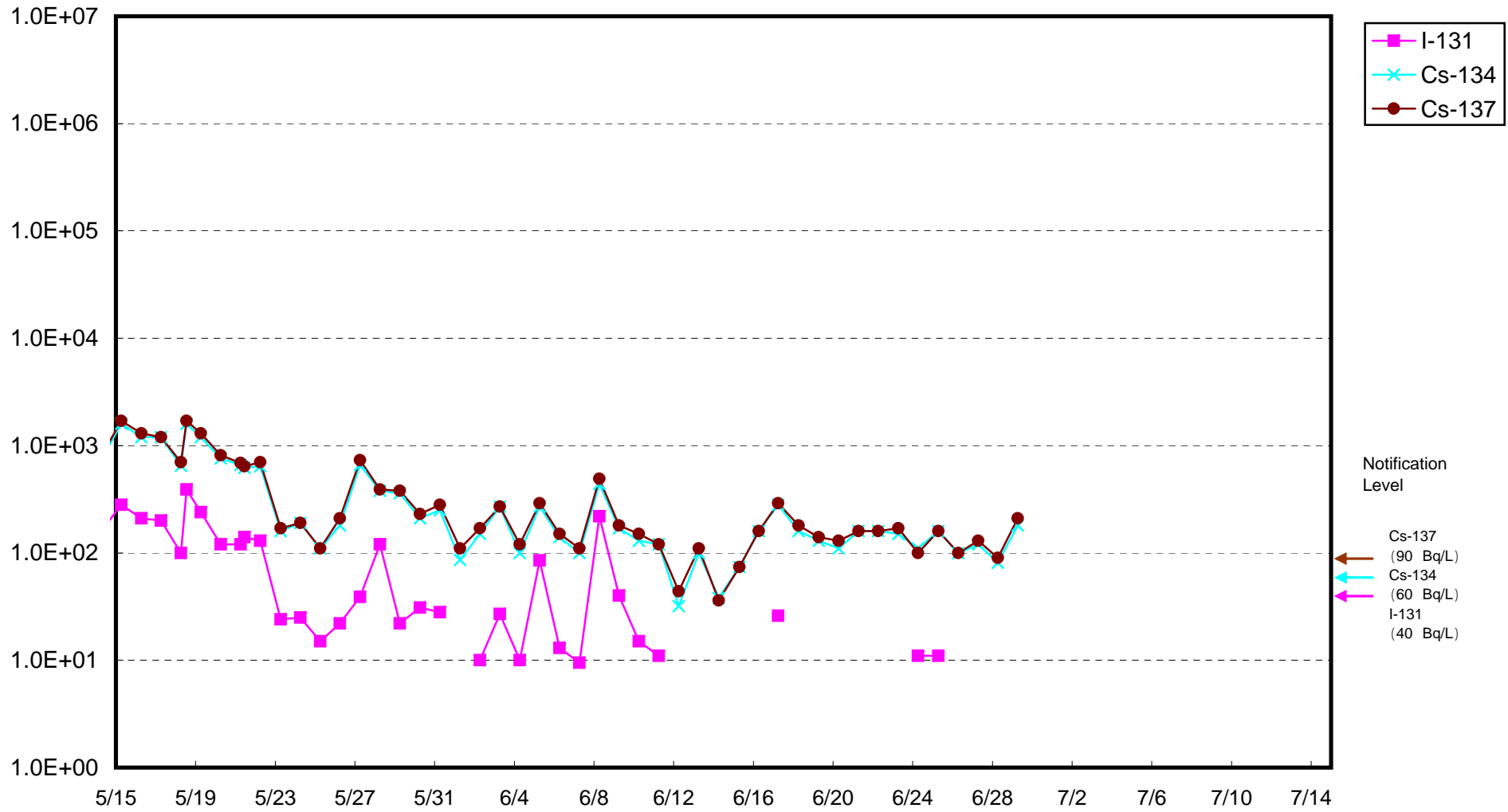
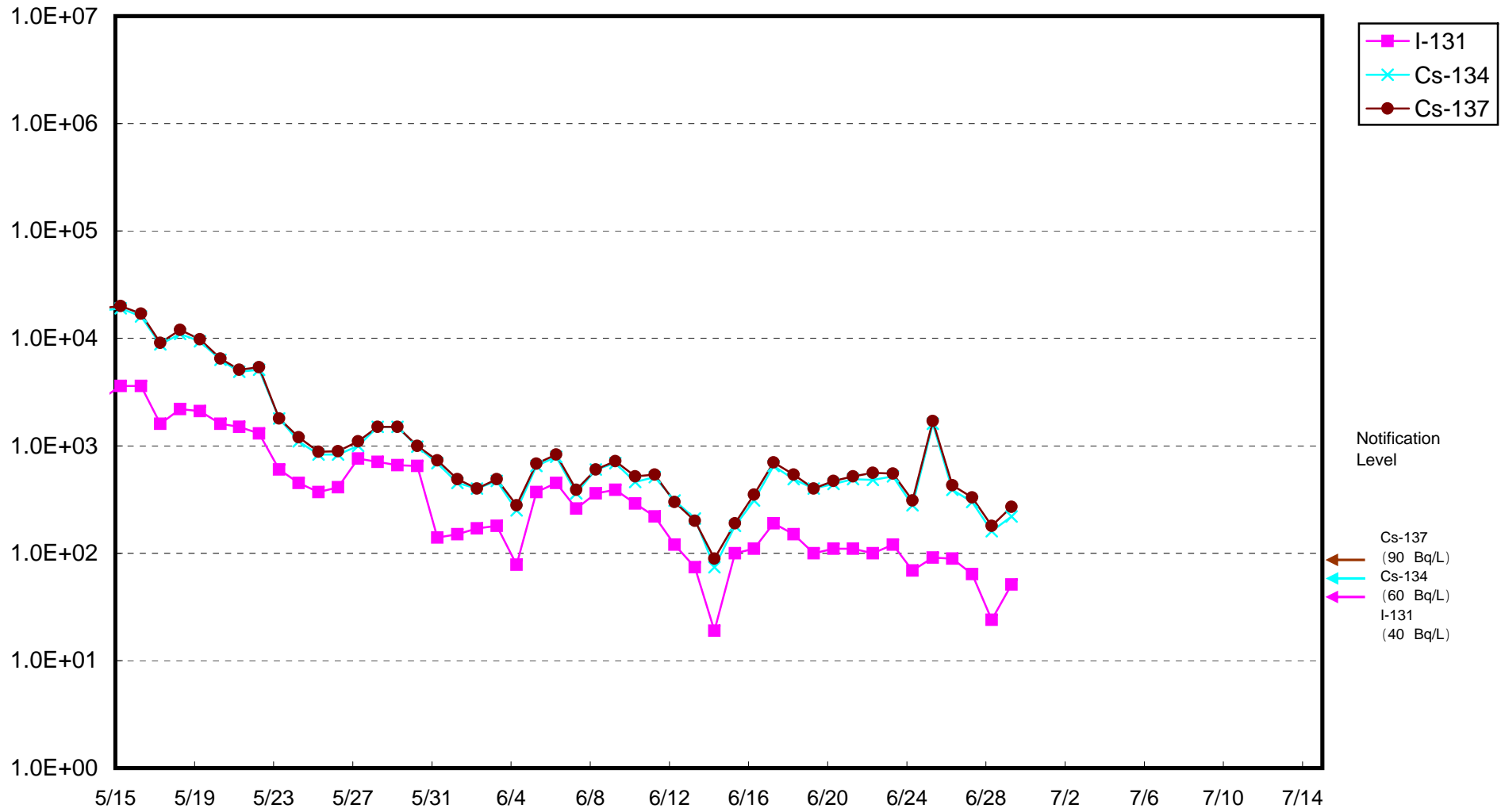


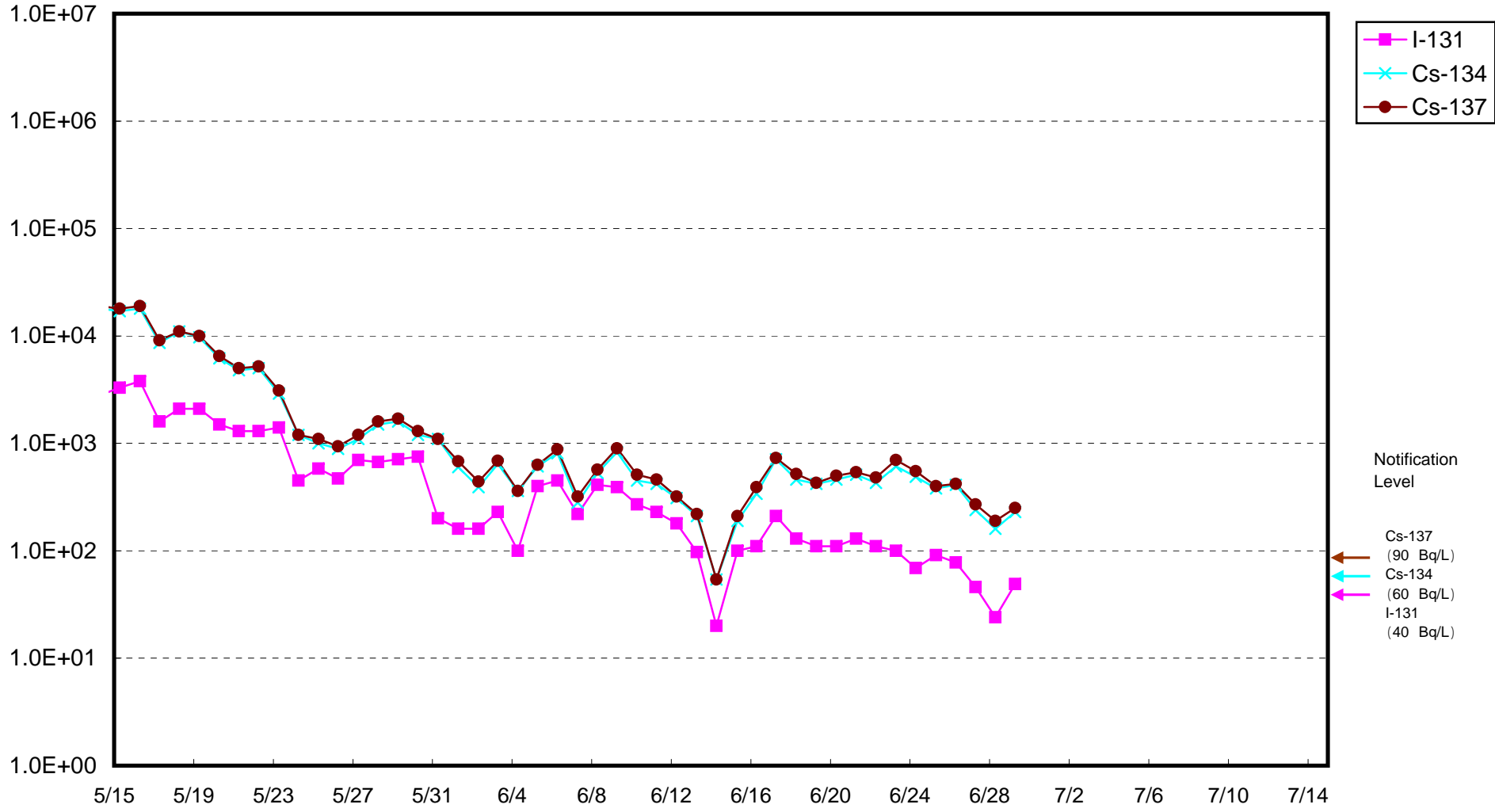
Radioactivity Density of Seawater at Shallow Draft Quay of Fukushima Daiichi NPS (Bq/ L)



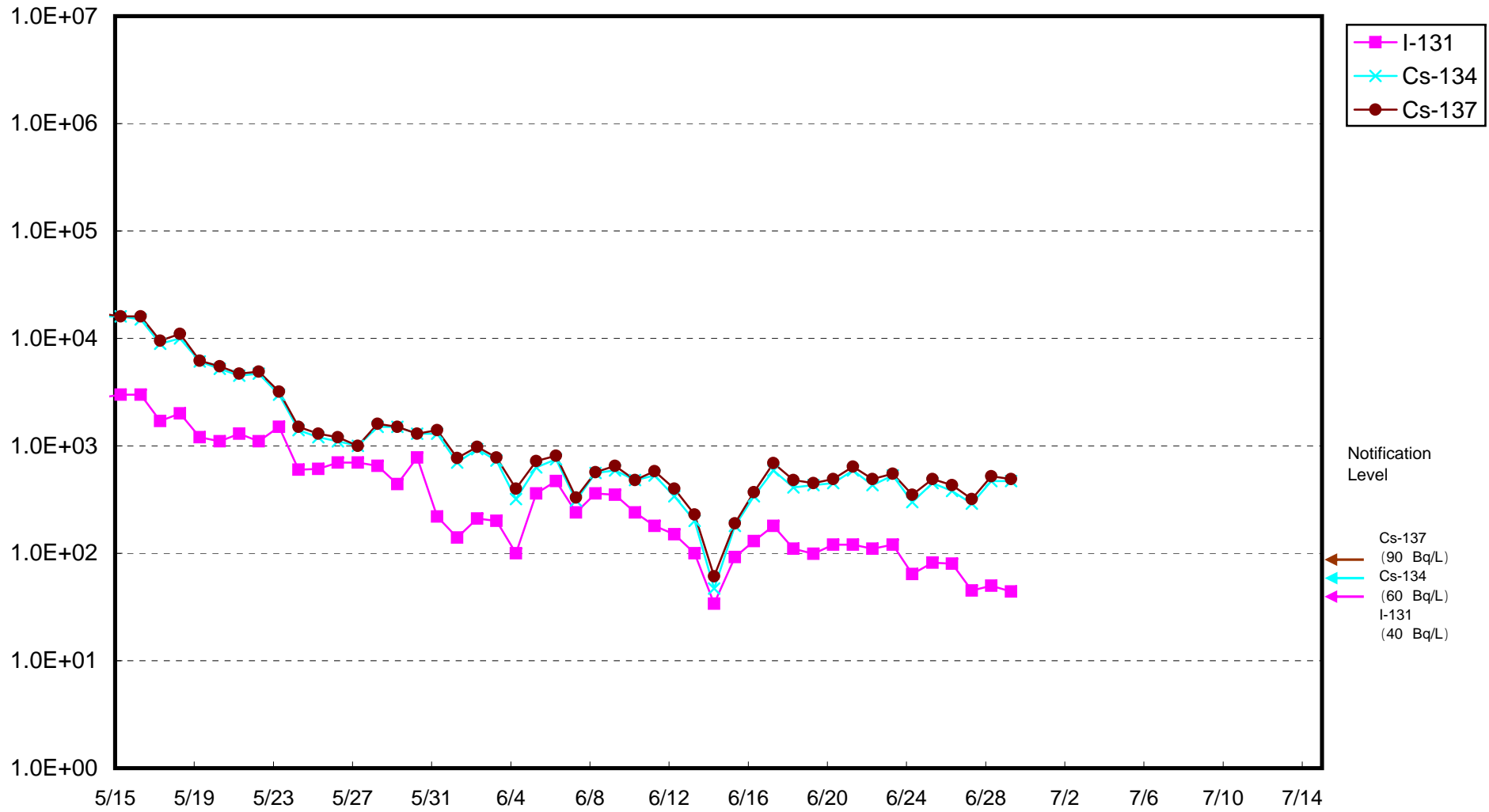
Radioactivity Density of Seawater at the north of Unit 1 to 4 Water Intake of Fukushima Daiichi NPS (Bq/ L)



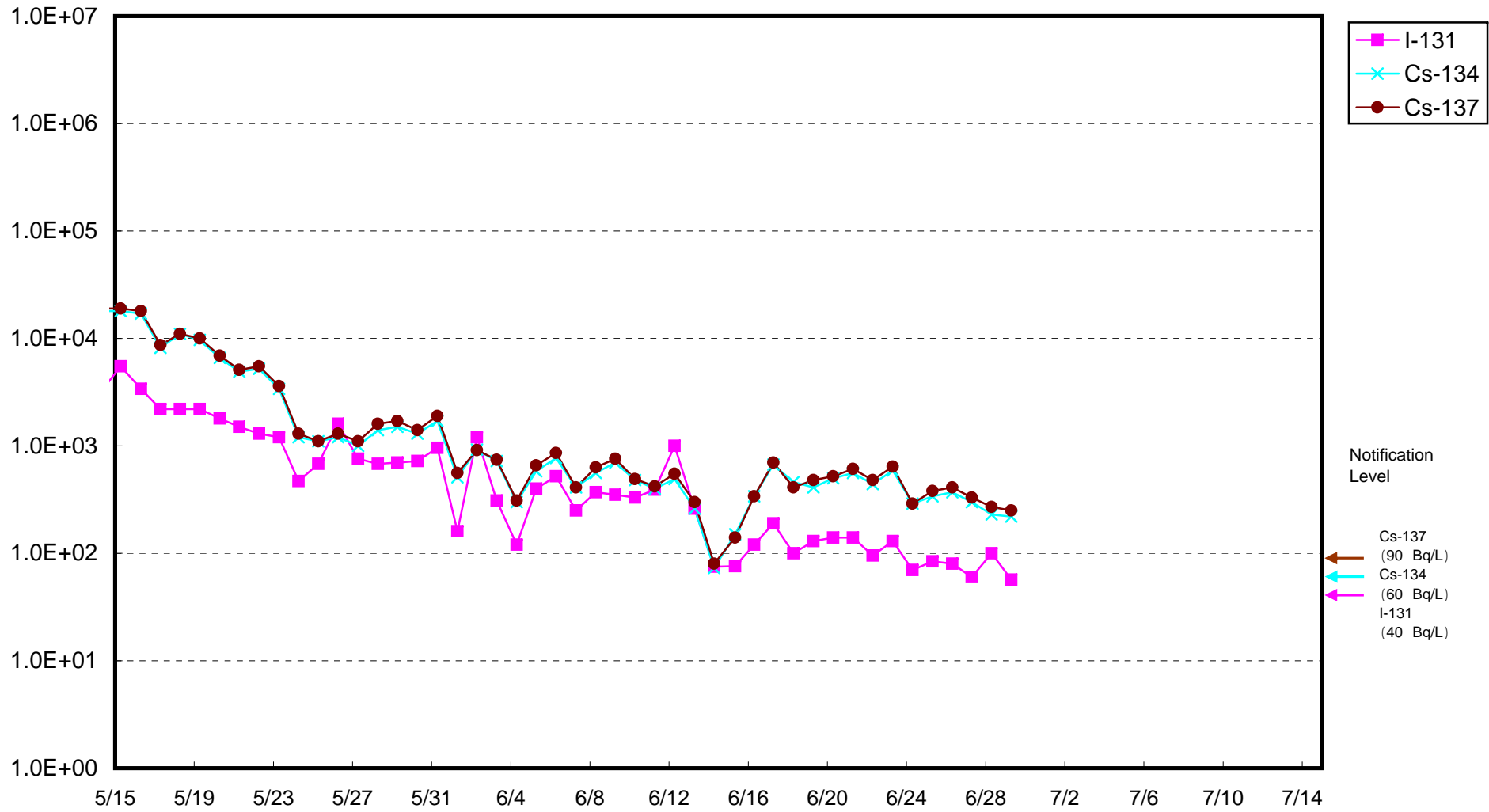
Radioactivity Density of Seawater around the Bar Screen of Unit 1 of Fukushima Daiichi NPS  
(outside the Silt Fence) (Bq/ L)



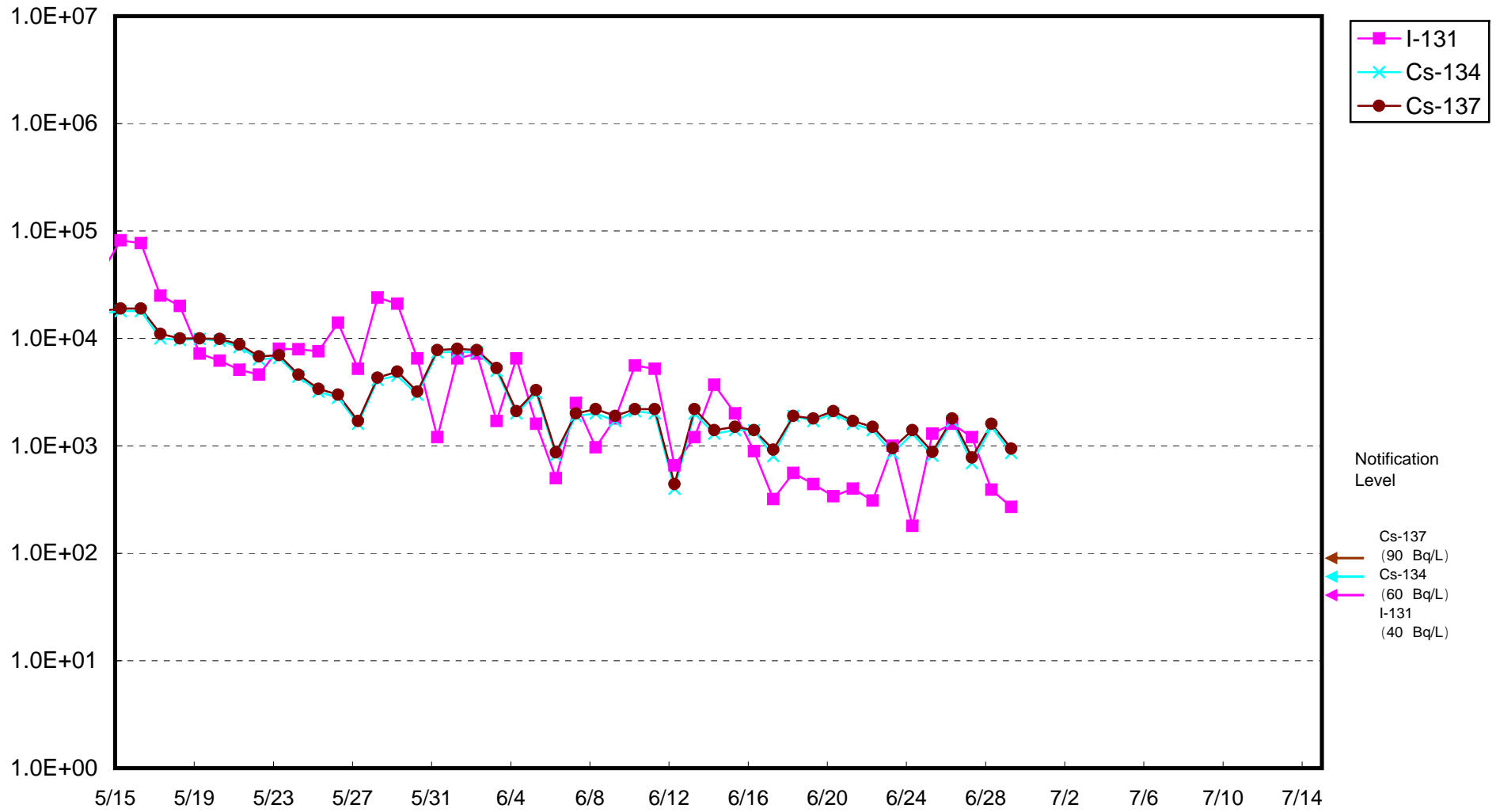
Radioactivity Density of Seawater around the Bar Screen of Unit 1 of Fukushima Daiichi NPS  
(inside the Silt Fence) (Bq/ L)



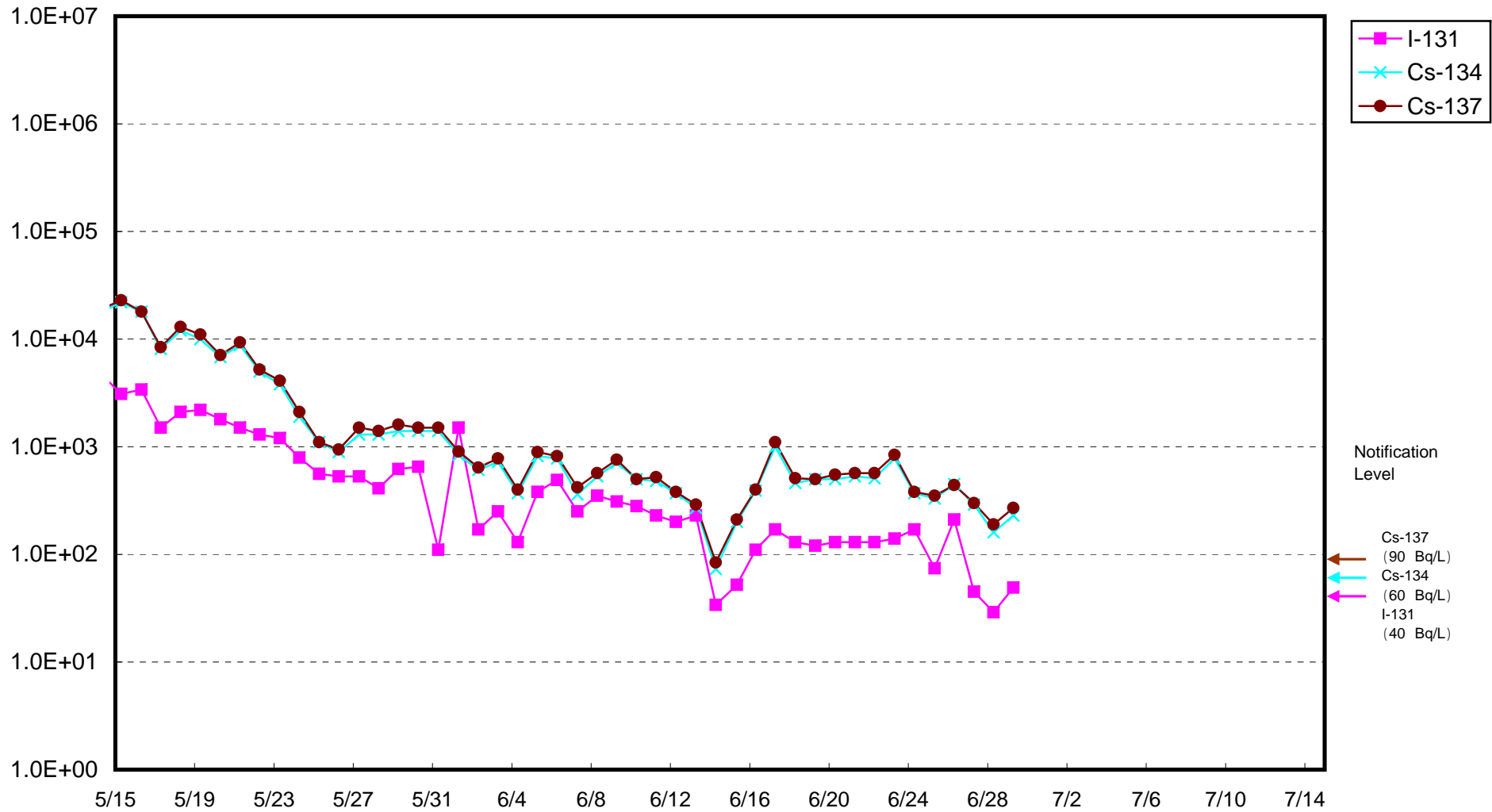
Radioactivity Density of Seawater around the Bar Screen of Unit 2 of Fukushima Daiichi NPS  
(outside the Silt Fence) (Bq/ L)



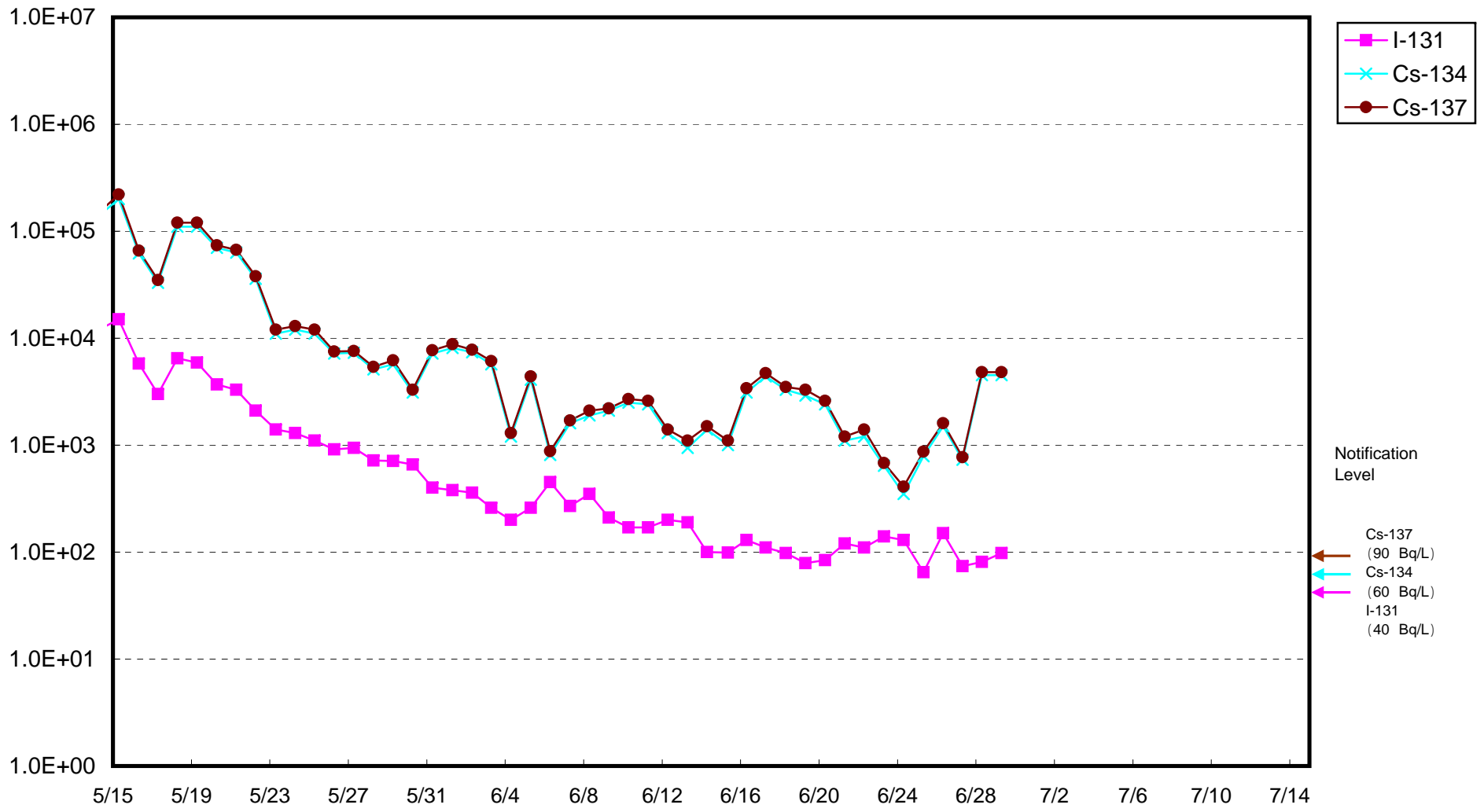
Radioactivity Density of Seawater around the Bar Screen of Unit 2 of Fukushima Daiichi NPS  
(inside the Silt Fence) (Bq/ L)



Radioactivity Density of Seawater around the Bar Screen of Unit 3 of Fukushima Daiichi NPS  
(outside the Silt Fence) (Bq/ L)

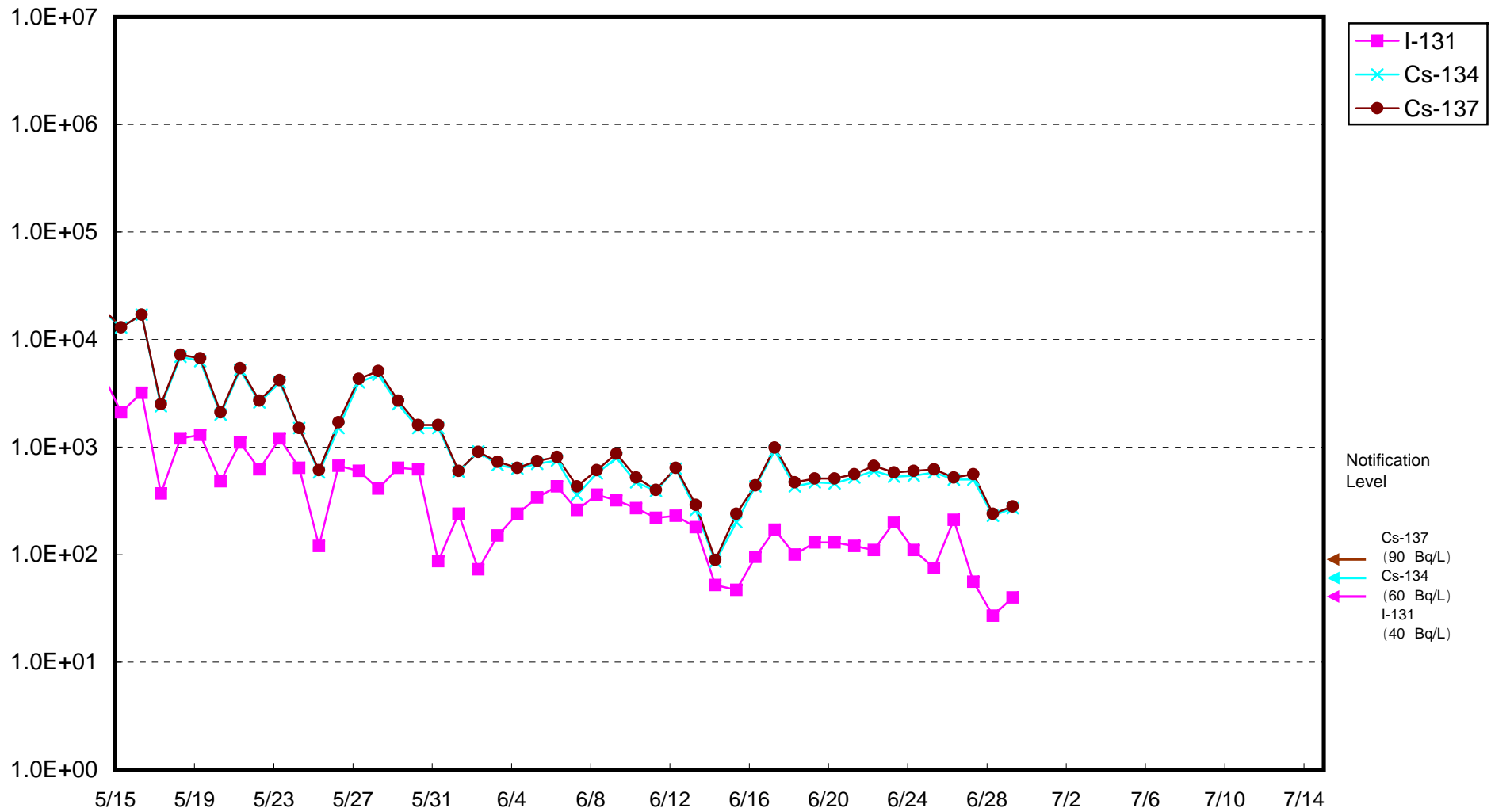


Radioactivity Density of Seawater around the Bar Screen of Unit 3 of Fukushima Daiichi NPS  
(inside the Silt Fence) (Bq/ L)

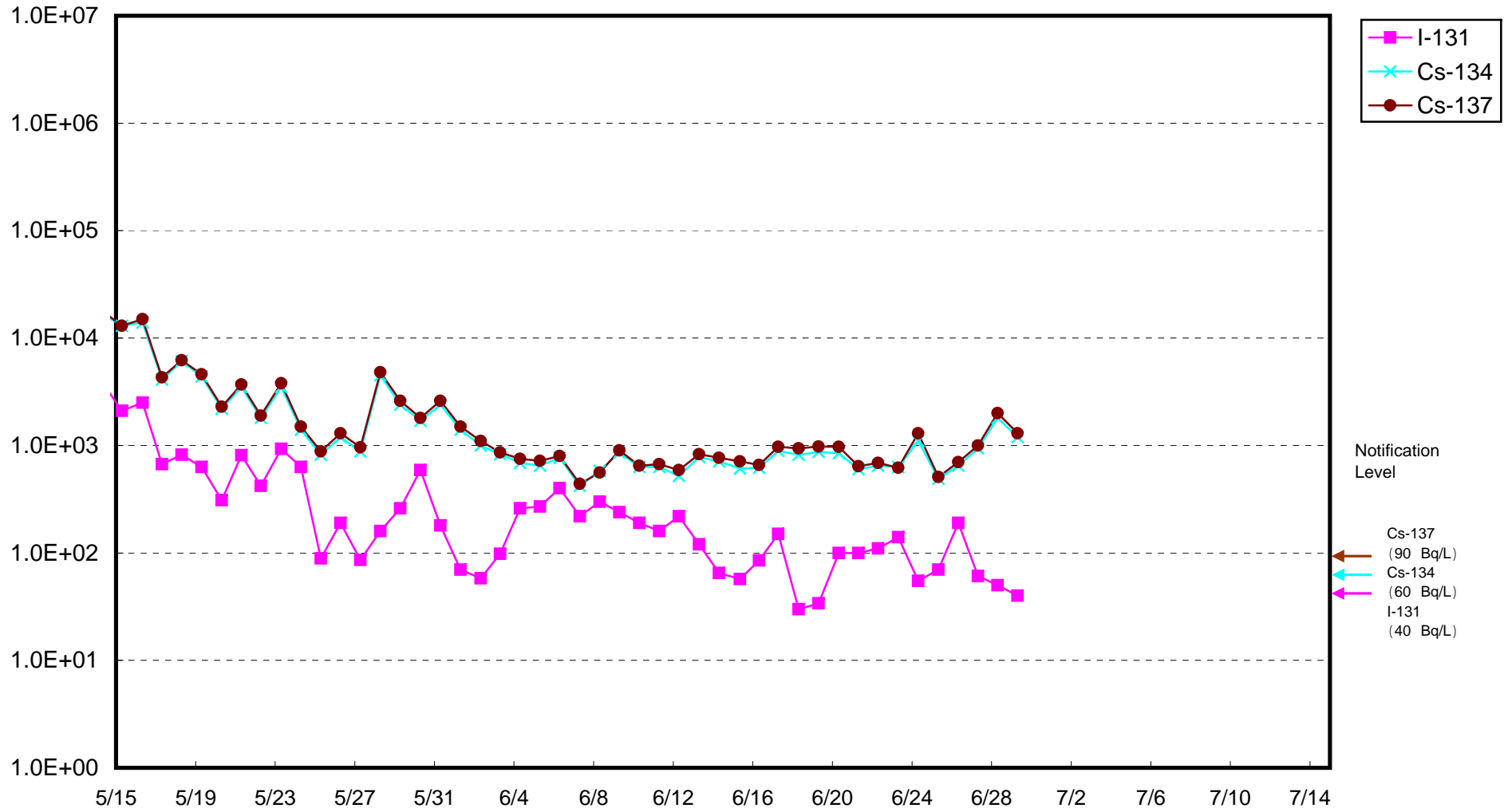




Radioactivity Density of Seawater around the Bar Screen of Unit 4 of Fukushima Daiichi NPS  
(outside the Silt Fence) (Bq/ L)



Radioactivity Density of Seawater around the Bar Screen of Unit 4 of Fukushima Daiichi NPS  
(inside the Silt Fence) (Bq/ L)



Radioactivity Density of Seawater at the South of Units 1-4 Water Intake of Fukushima Daiichi NPS  
(Bq/ L)

