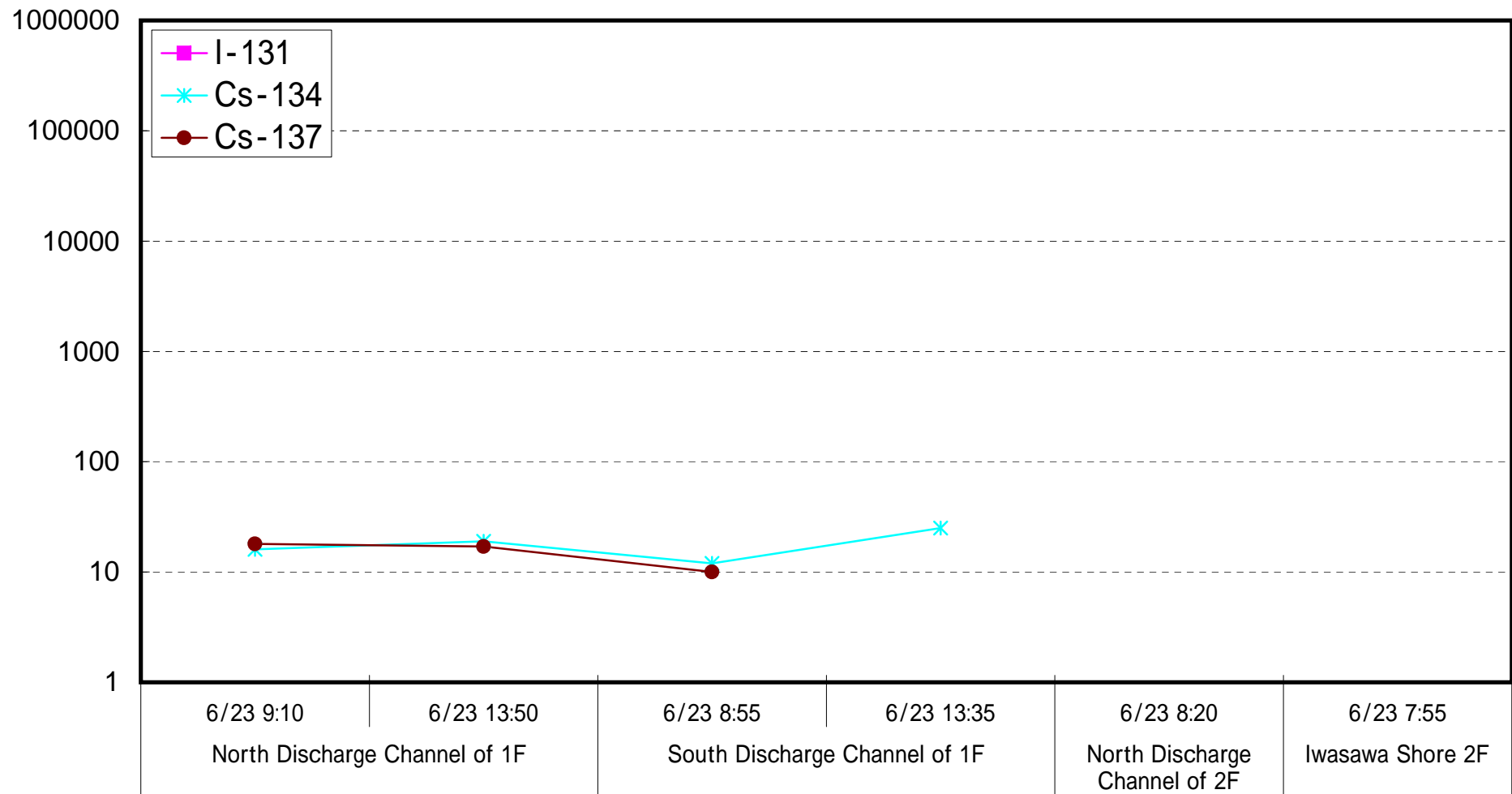
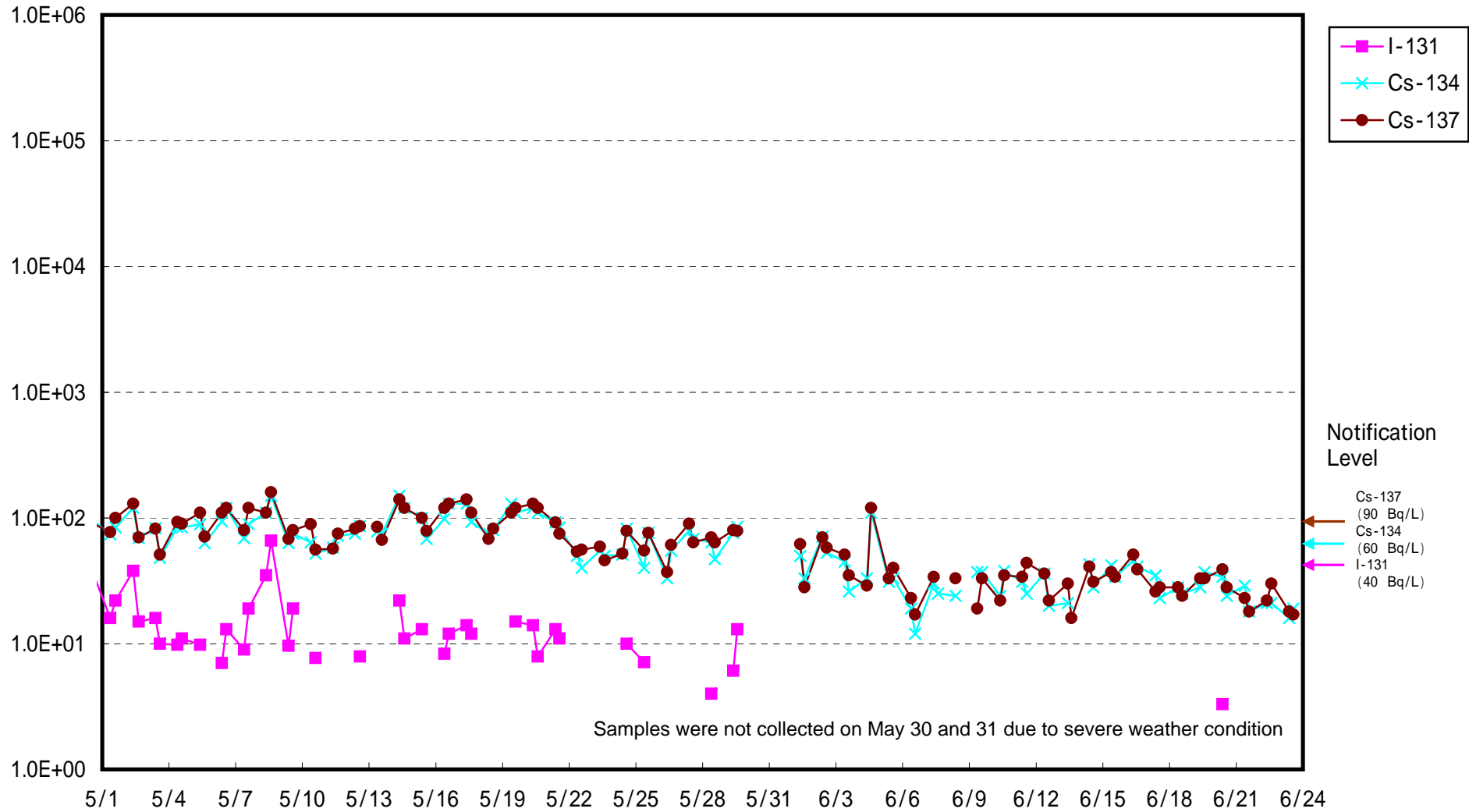


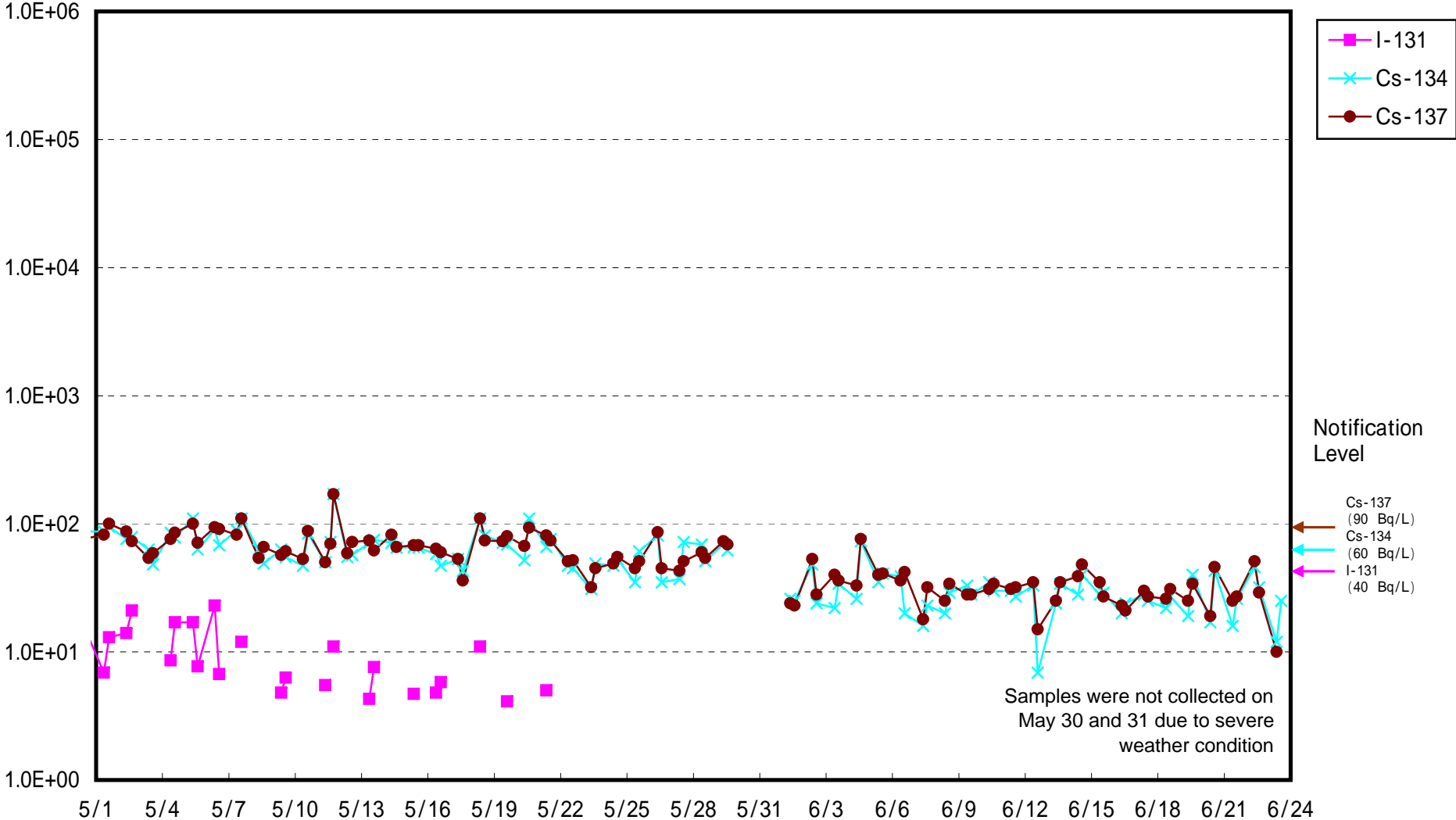
# Radioactive Density of Seawater ( B q / L )



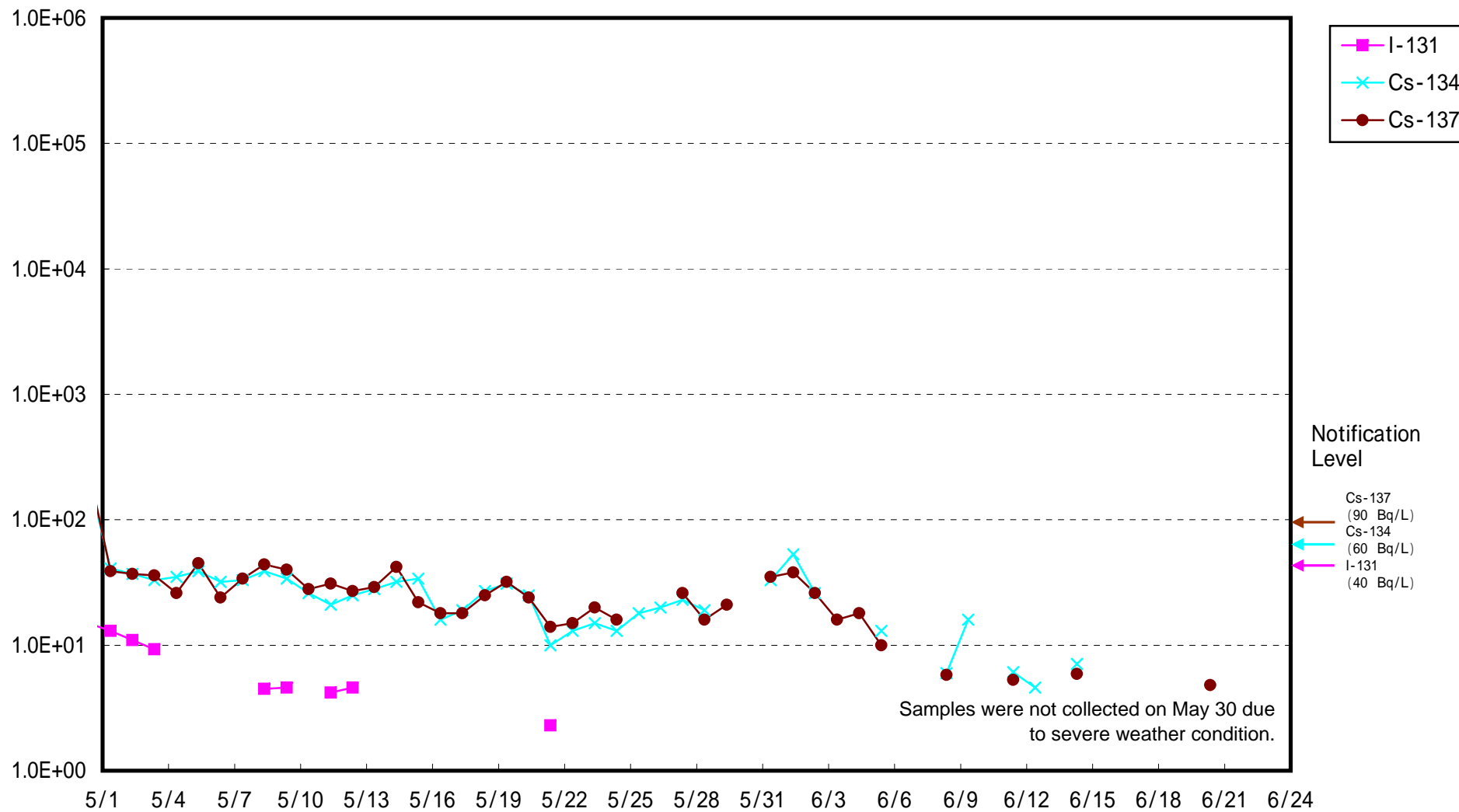
Radioactivity Density of Seawater at North of 1F5-6 Discharge Channel  
 (approx.30m north of 5-6 discharge channel) (Bq/L)



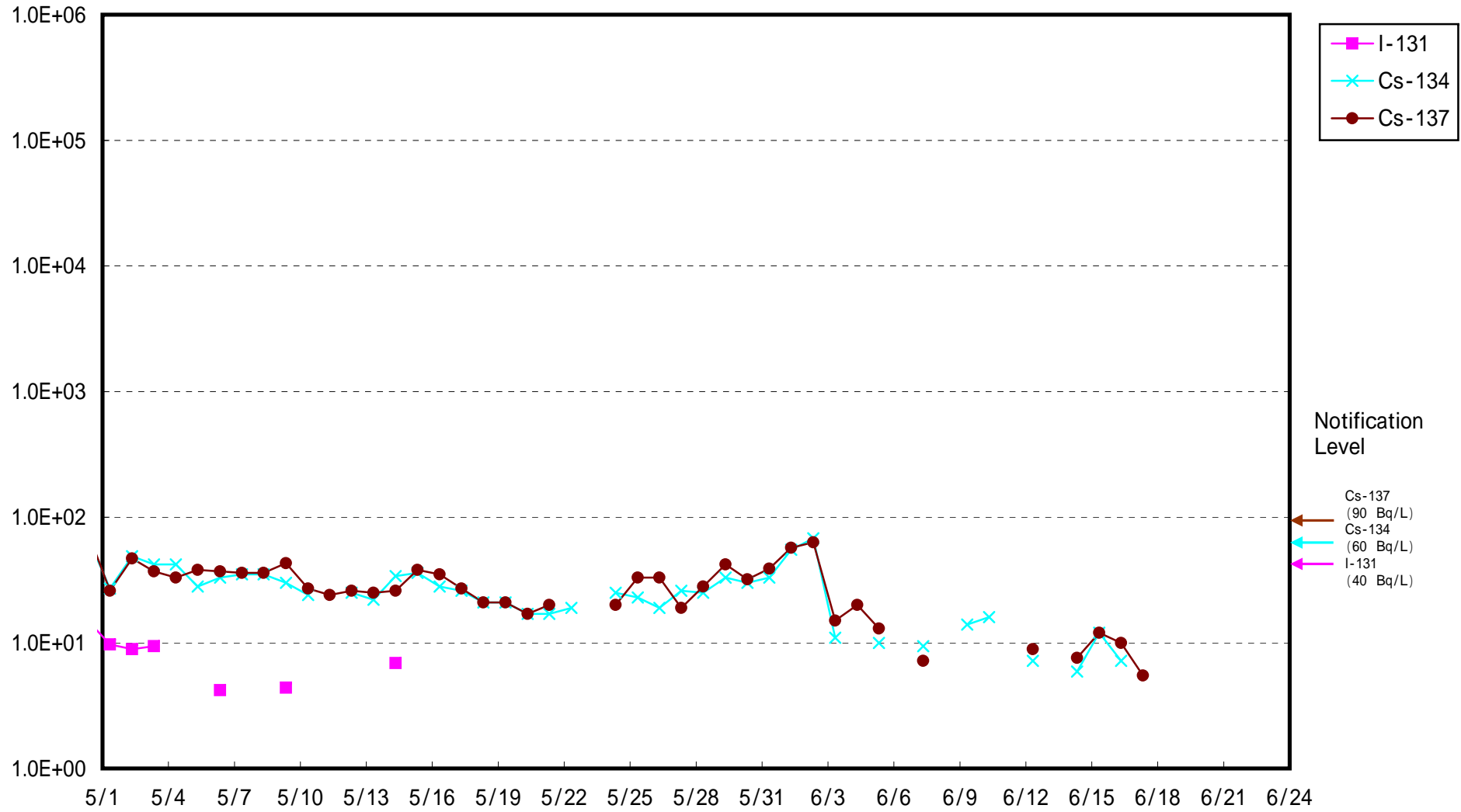
Radioactivity Density of Seawater at South Discharge Channel of 1F (Bq/L)



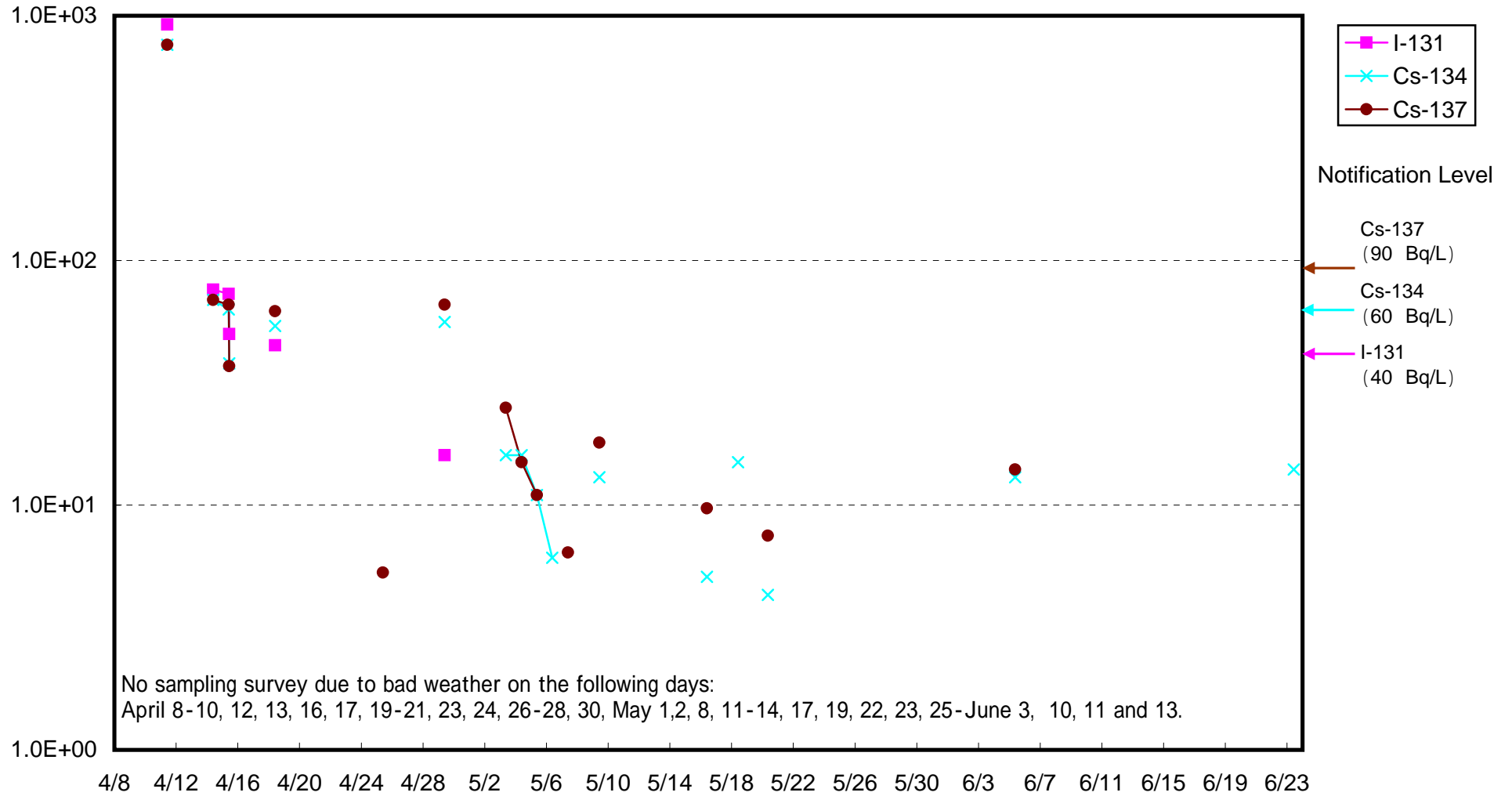
Radioactivity Density of Seawater at North Discharge Channel of 2F (Bq/L)



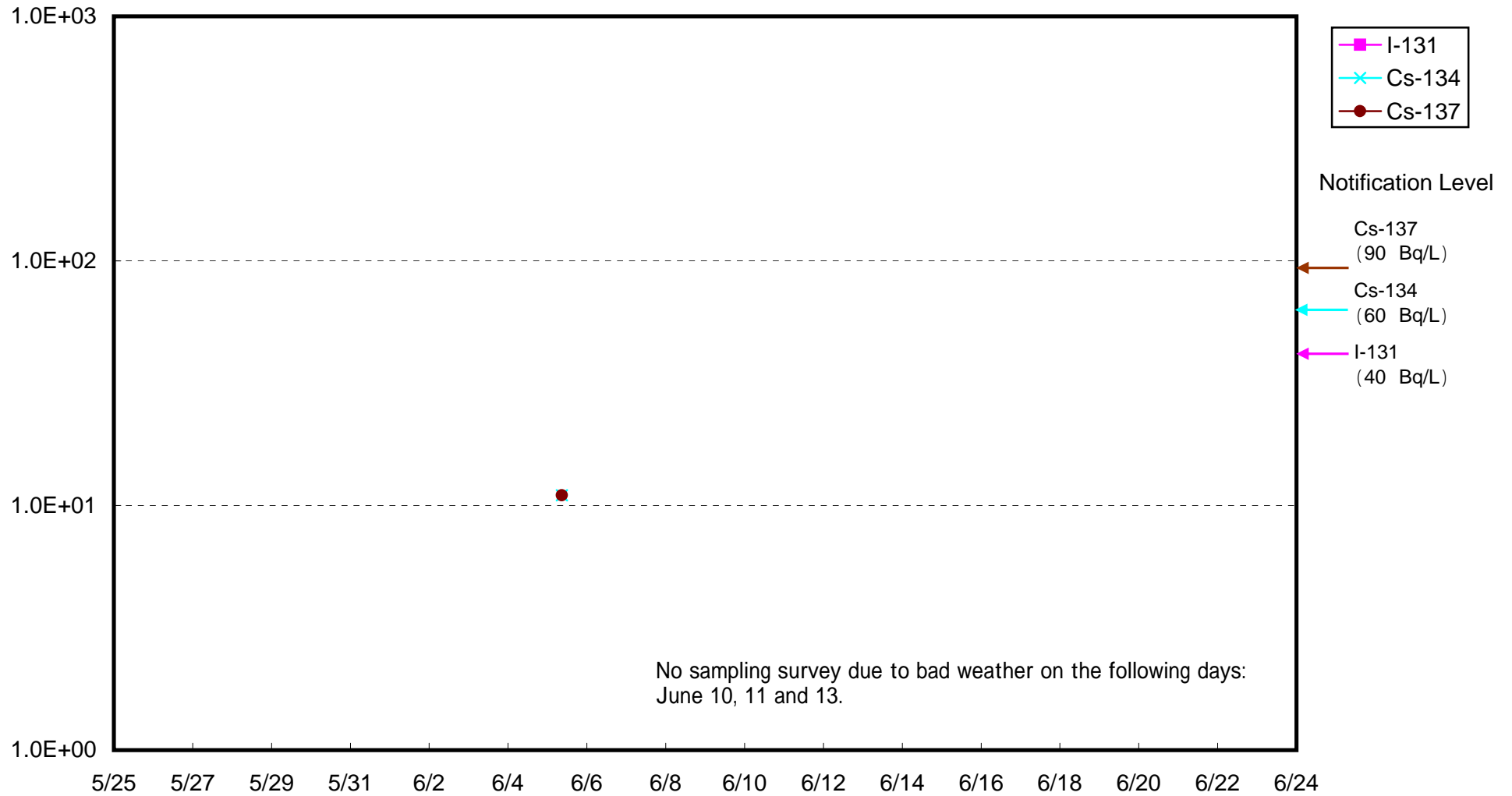
Radioactivity Density of Seawater at Iwasawa Shore 2F (Bq/L)



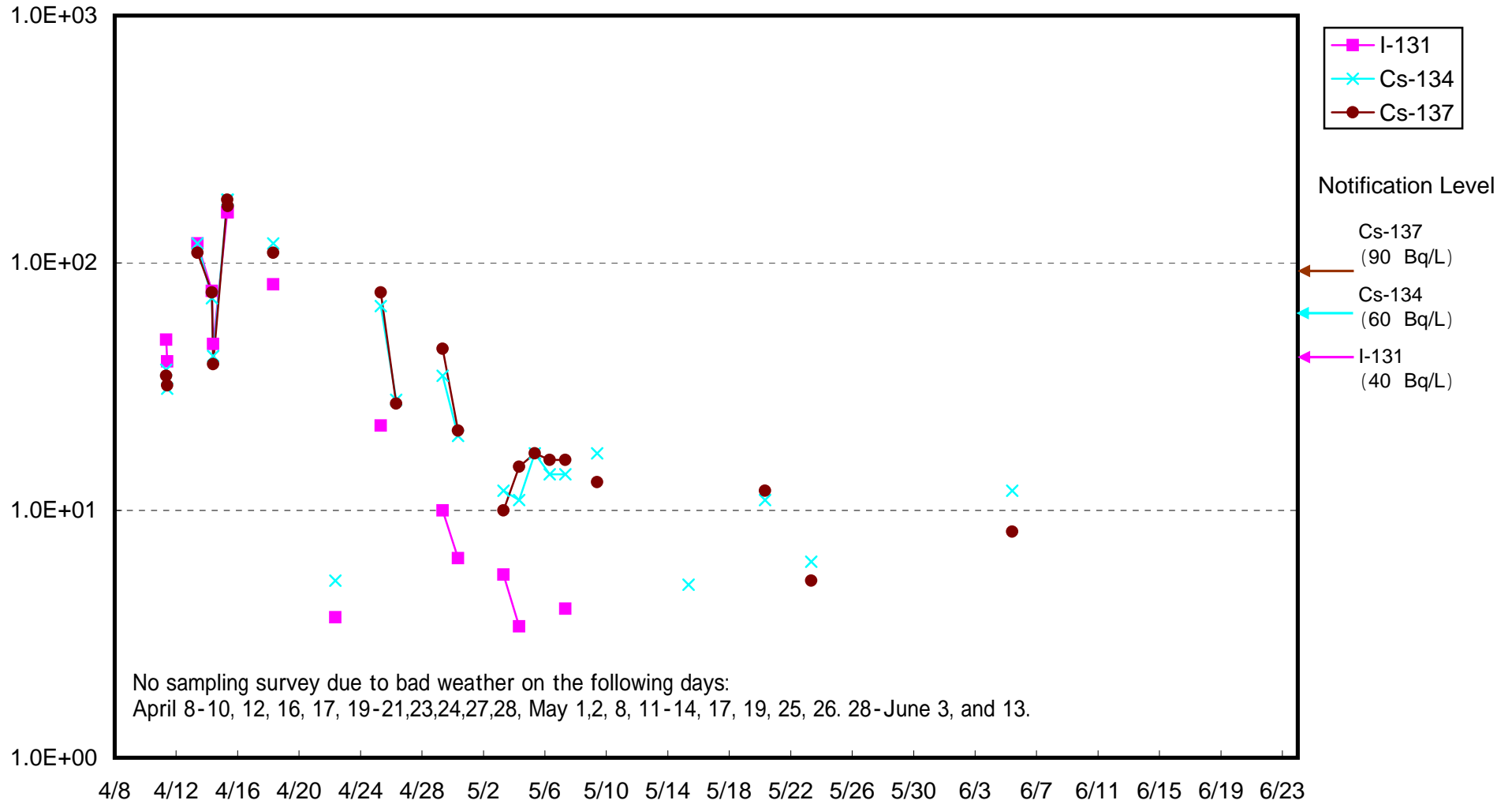
Radioactivity Density of Seawater around approx. 15km offshore of Minamisoma city Upper Layer (Bq/L)



Radioactivity Density of Seawater around approx. 15km offshore of Minamisoma city Lower Layer (Bq/L)

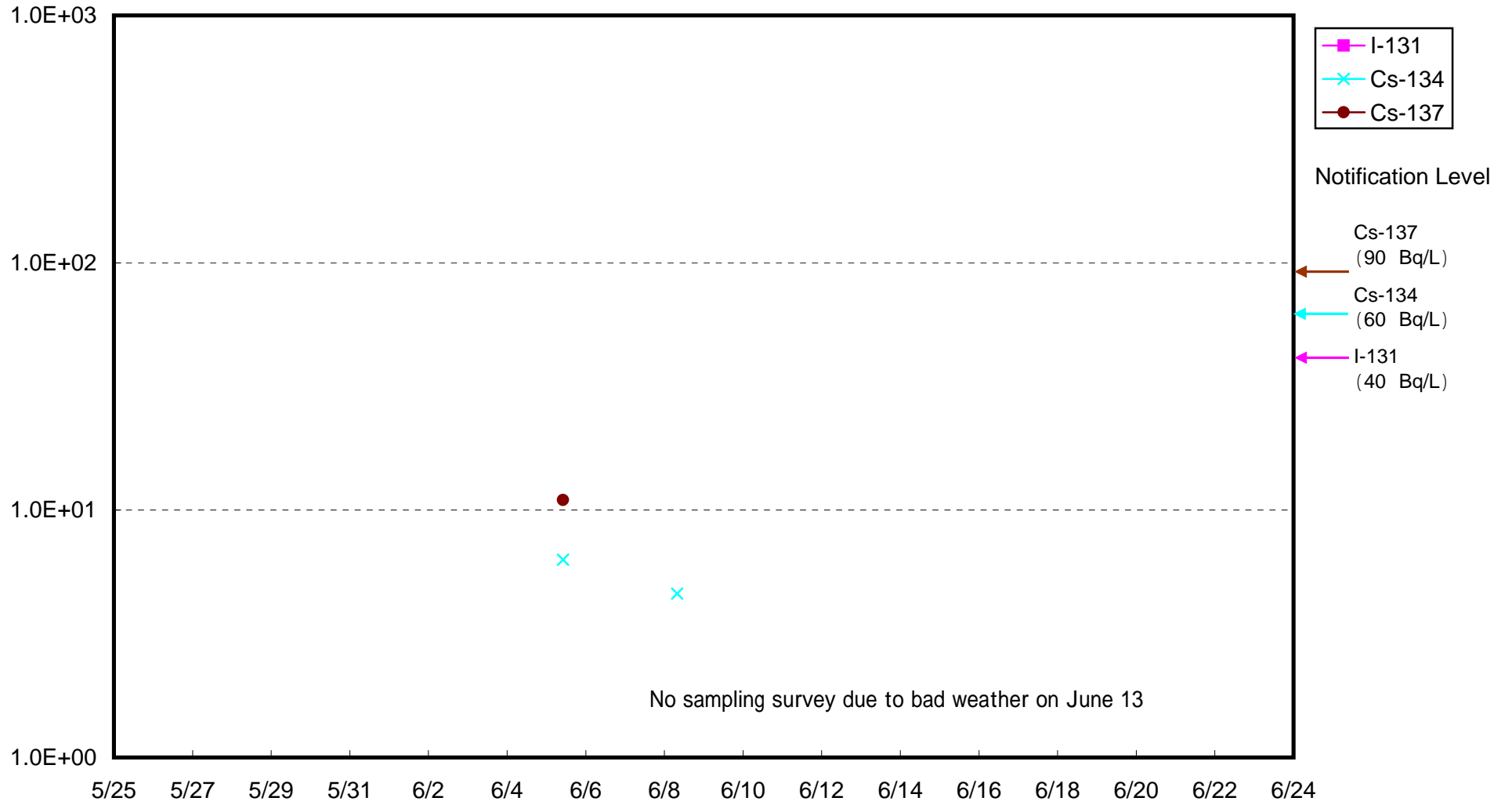


Radioactivity Density of Seawater around approx. 15 km offshore of Iwasawa Shore upper layer (Bq/L)

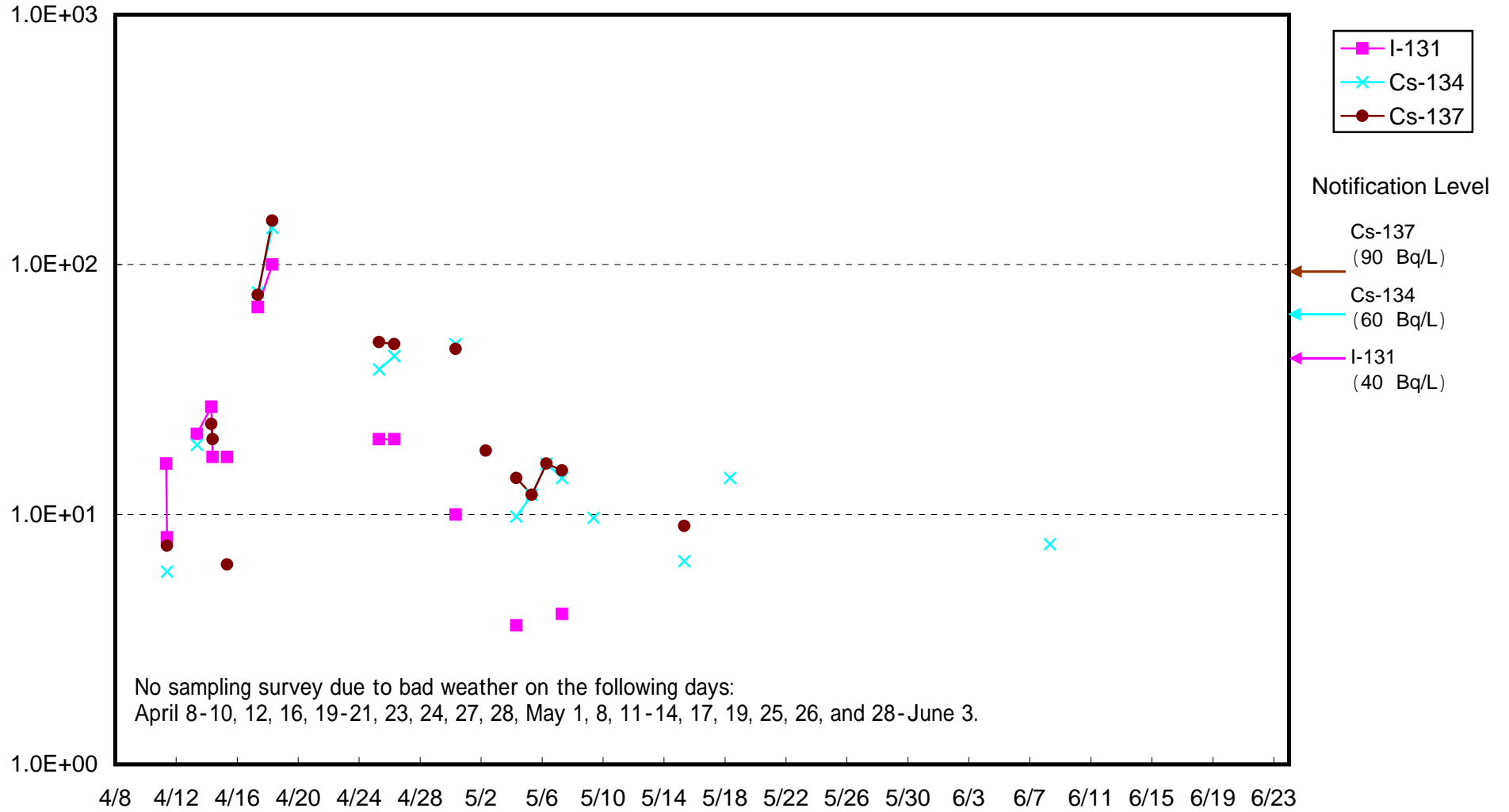




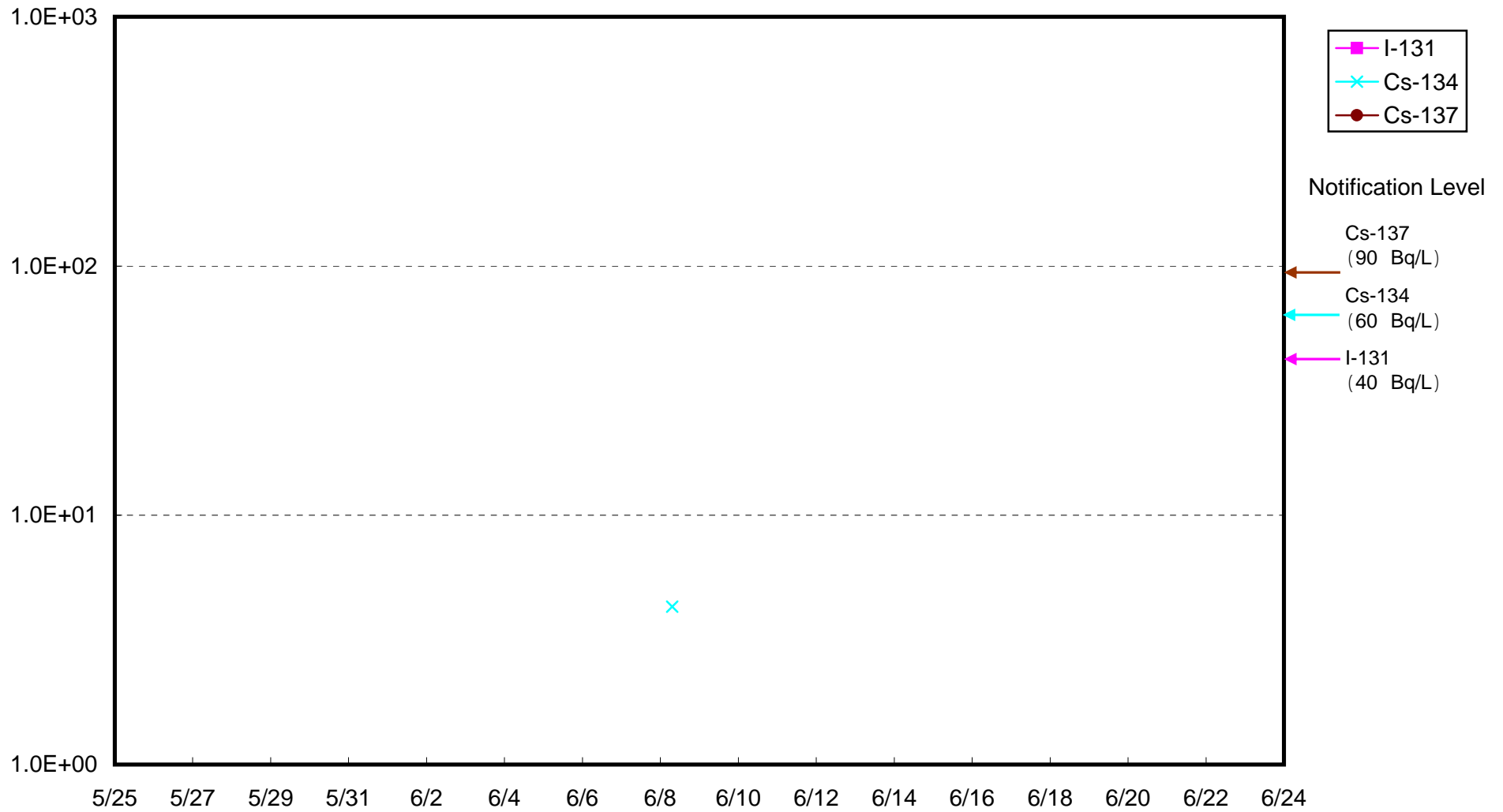
Radioactivity Density of Seawater around approx. 15 km offshore of Iwasawa Shore lower layer (Bq/L)



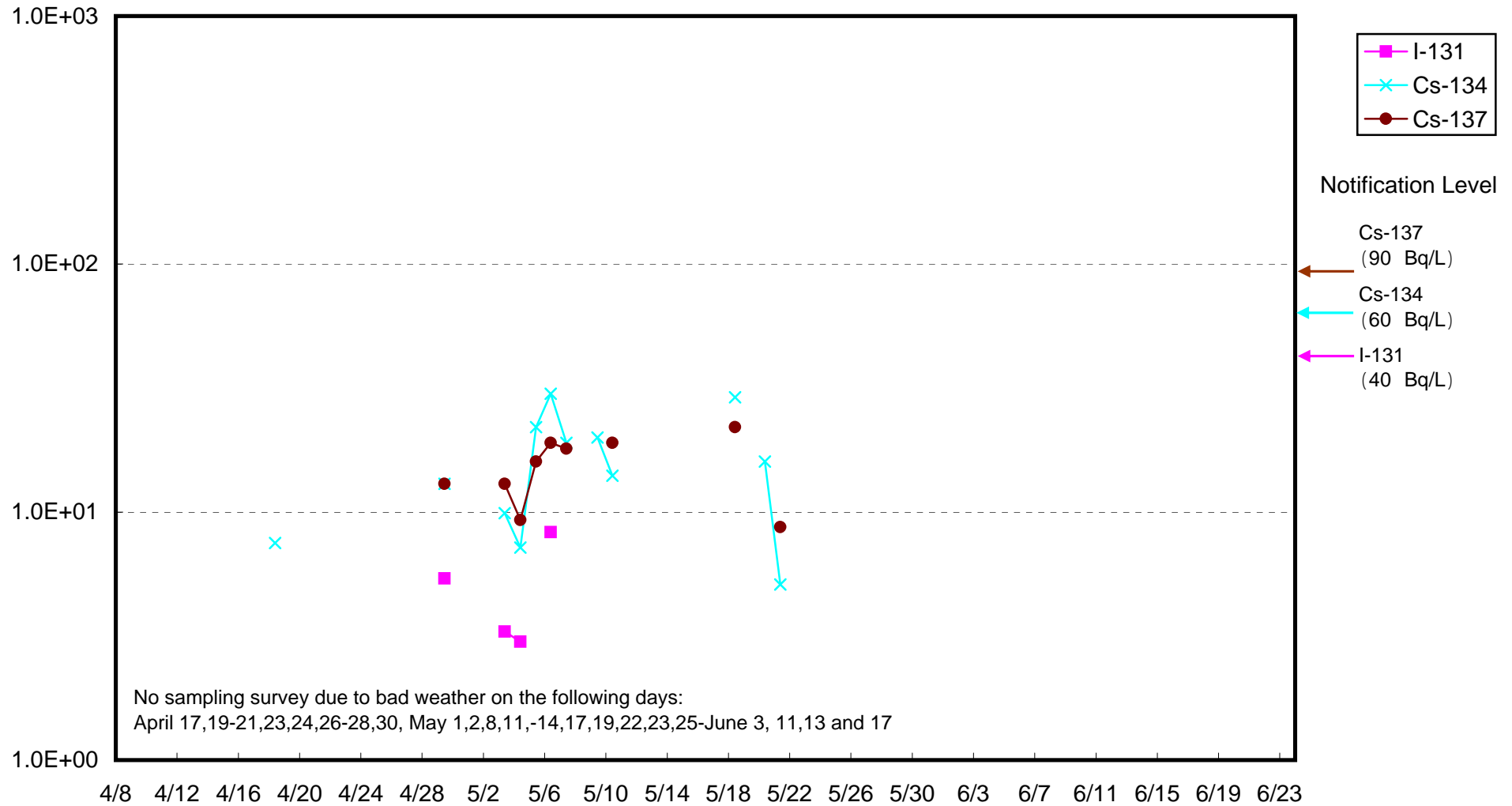
Radioactivity Density of Seawater around approx. 15 km offshore of Hirono machi Shore upper layer (Bq/L)



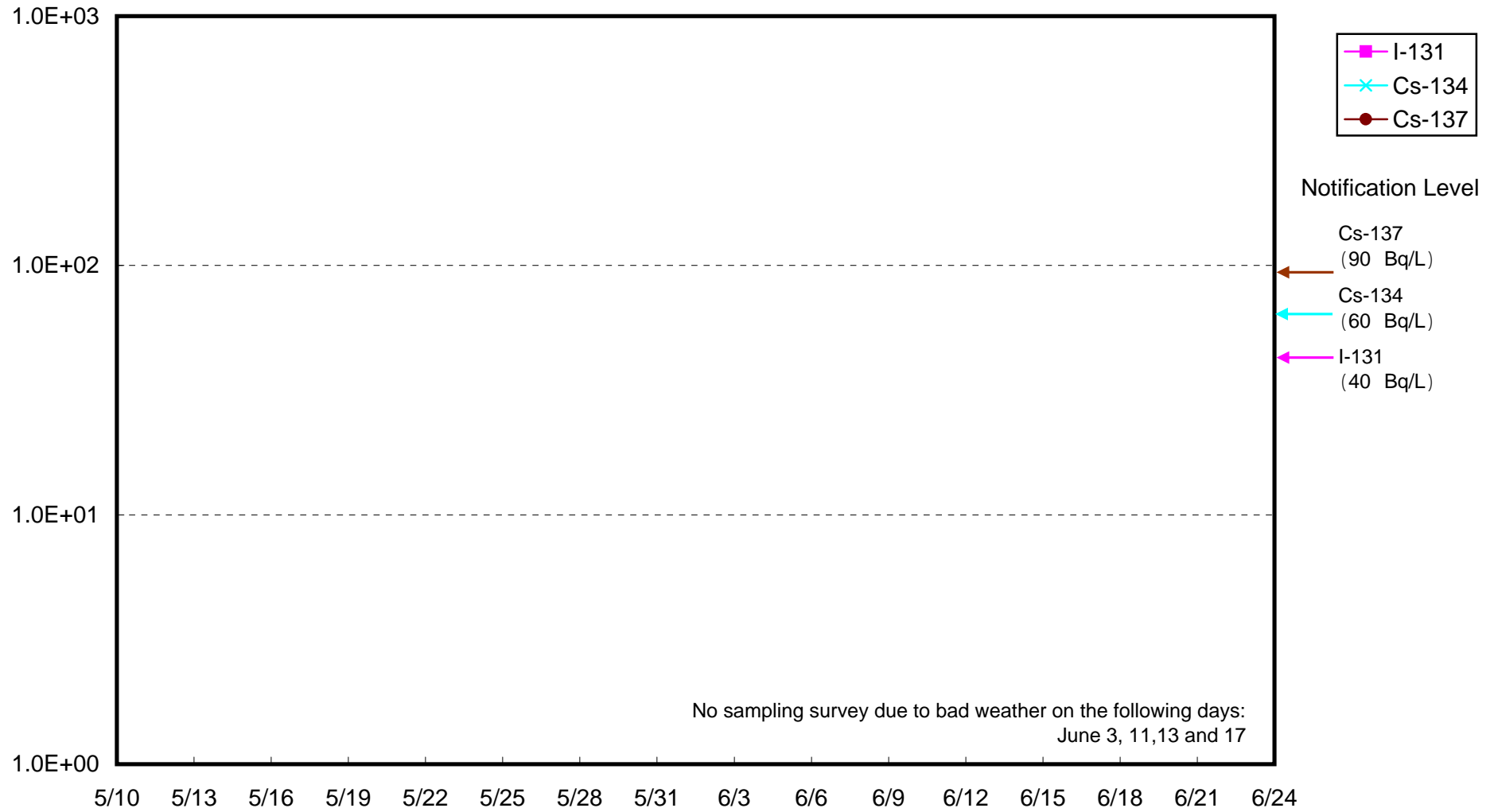
Radioactivity Density of Seawater around approx. 15 km offshore of Hirono machi Shore lower layer (Bq/L)



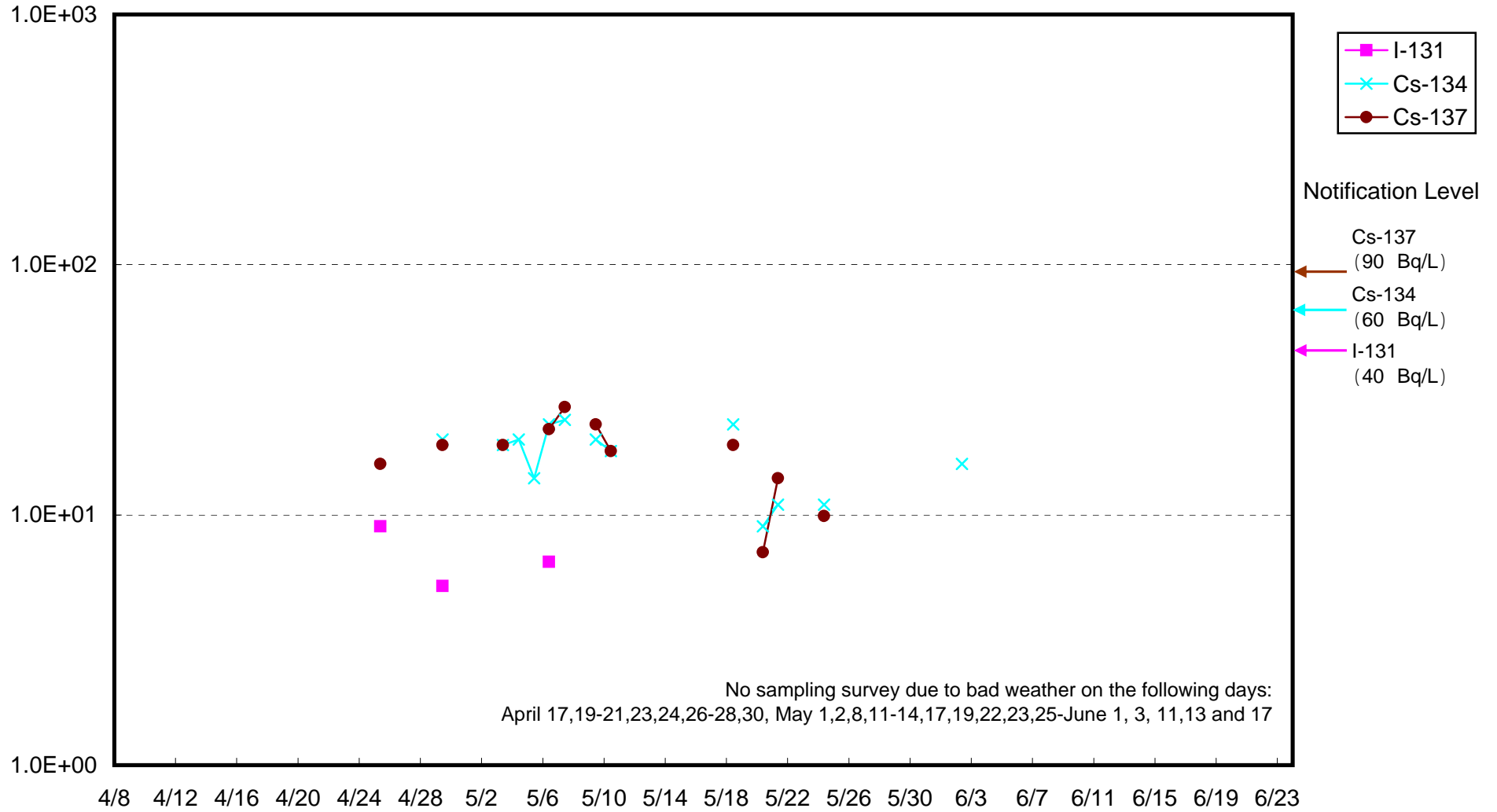
Radioactivity Density of Seawater around approx. 3km offshore of Haramachi district Upper Layer (Bq/L)



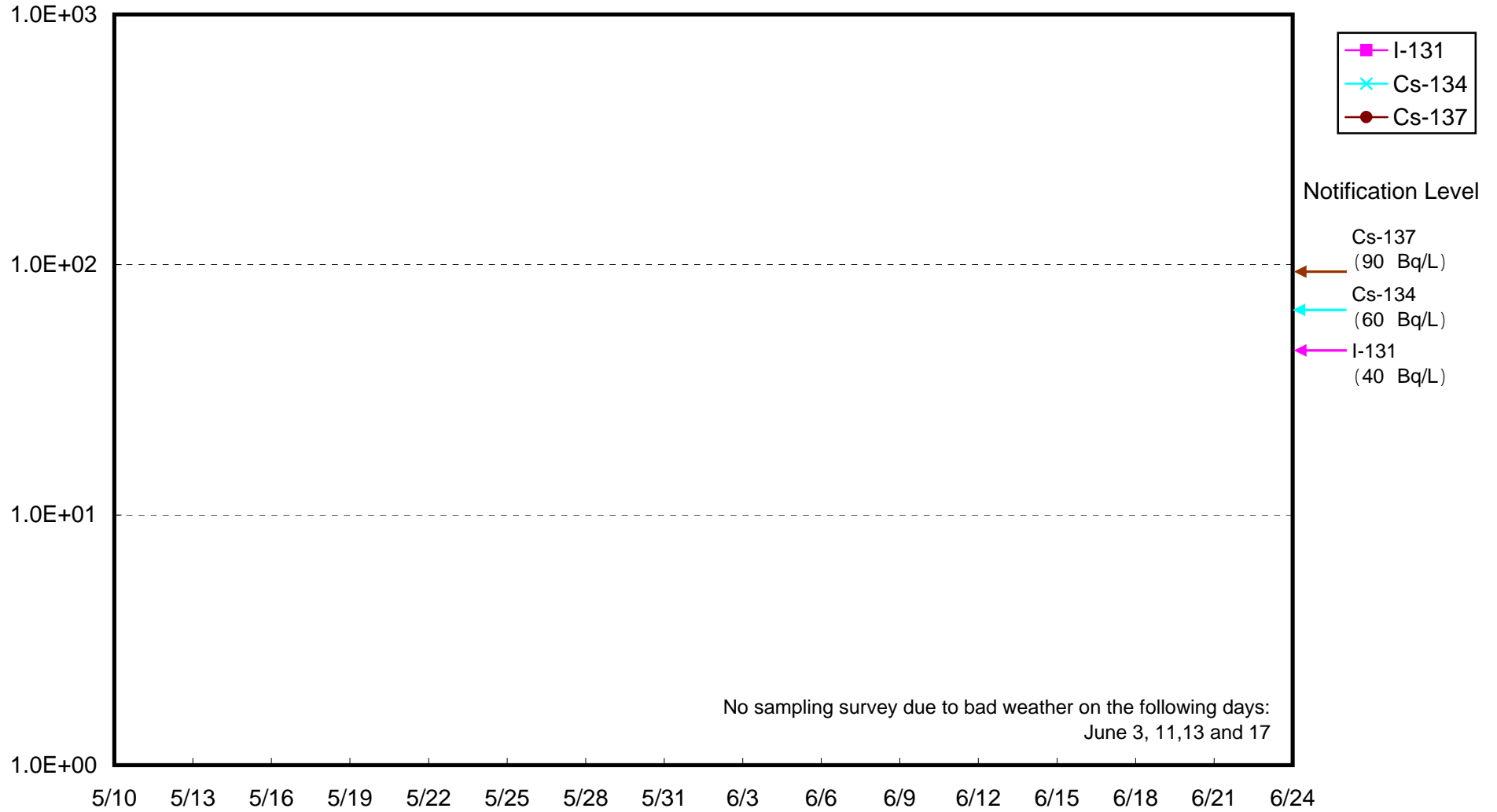
Radioactivity Density of Seawater around approx. 3km offshore of Haramachi district Lower Layer (Bq/L)



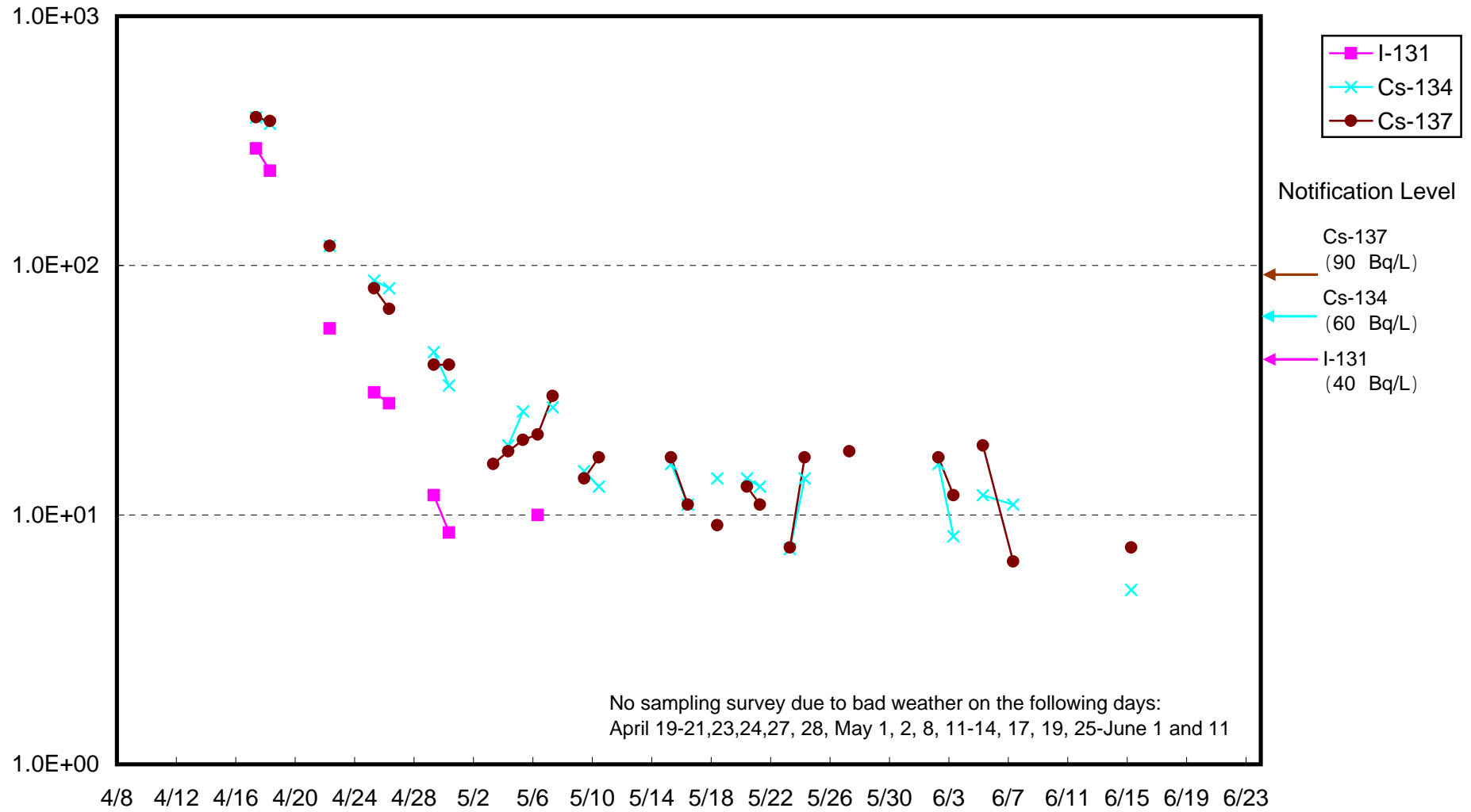
Radioactivity Density of Seawater around approx. 3km offshore of Odaka district Upper Layer (Bq/L)



Radioactivity Density of Seawater around approx. 3km offshore of Odaka district Lower Layer (Bq/L)

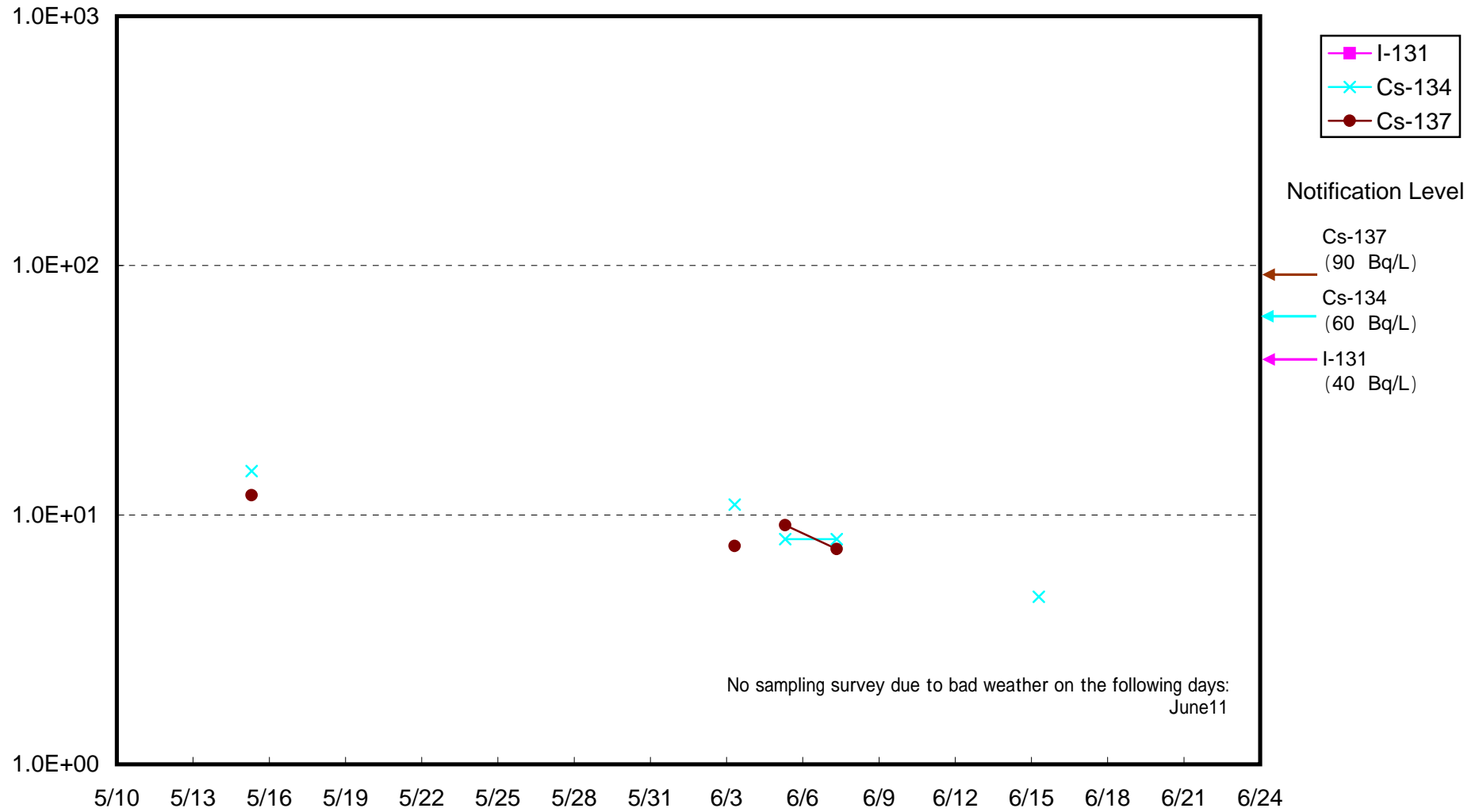


Radioactivity Density of Seawater around approx. 3km offshore of Iwasawa coast Upper Layer (Bq/L)

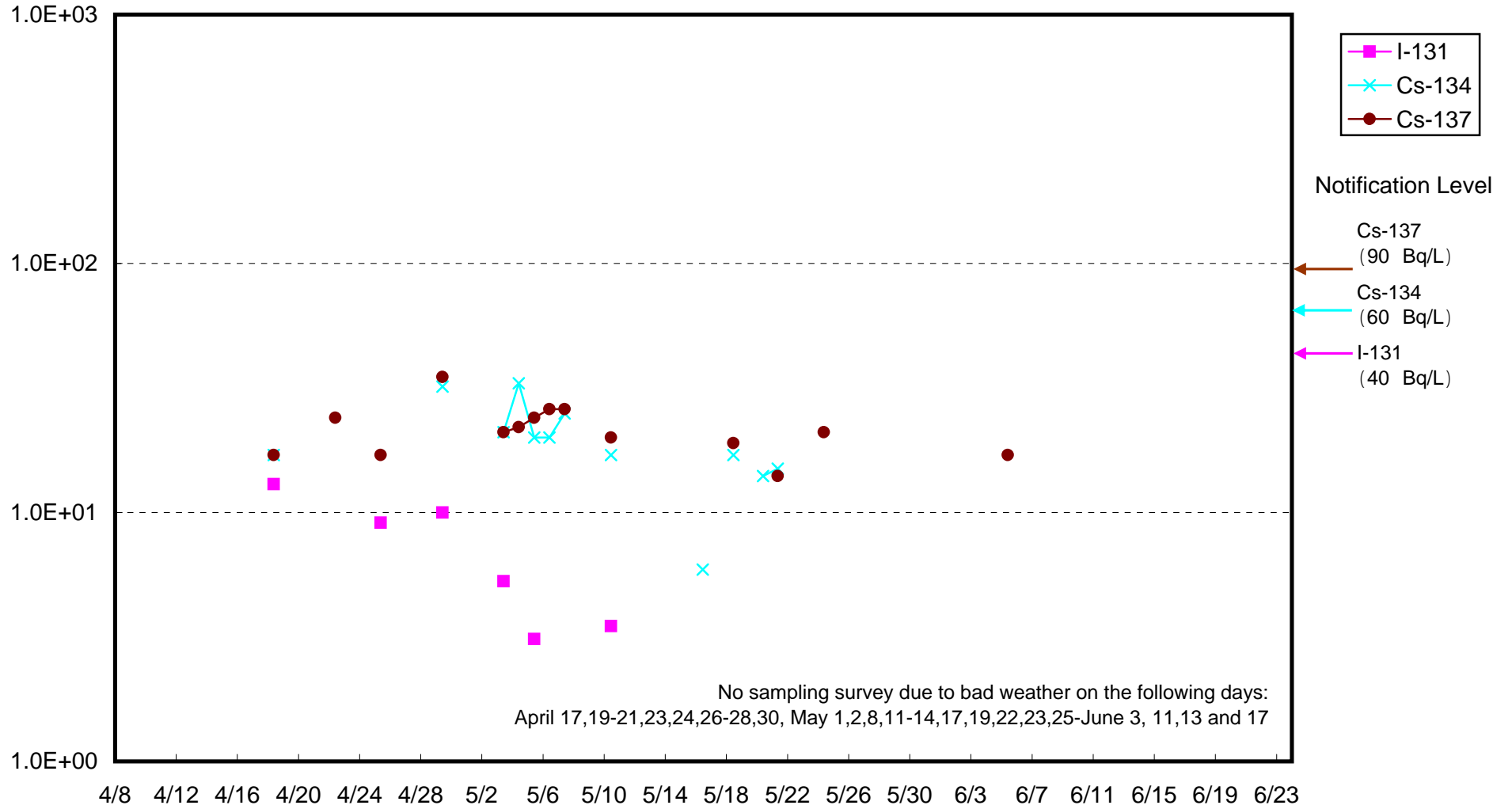




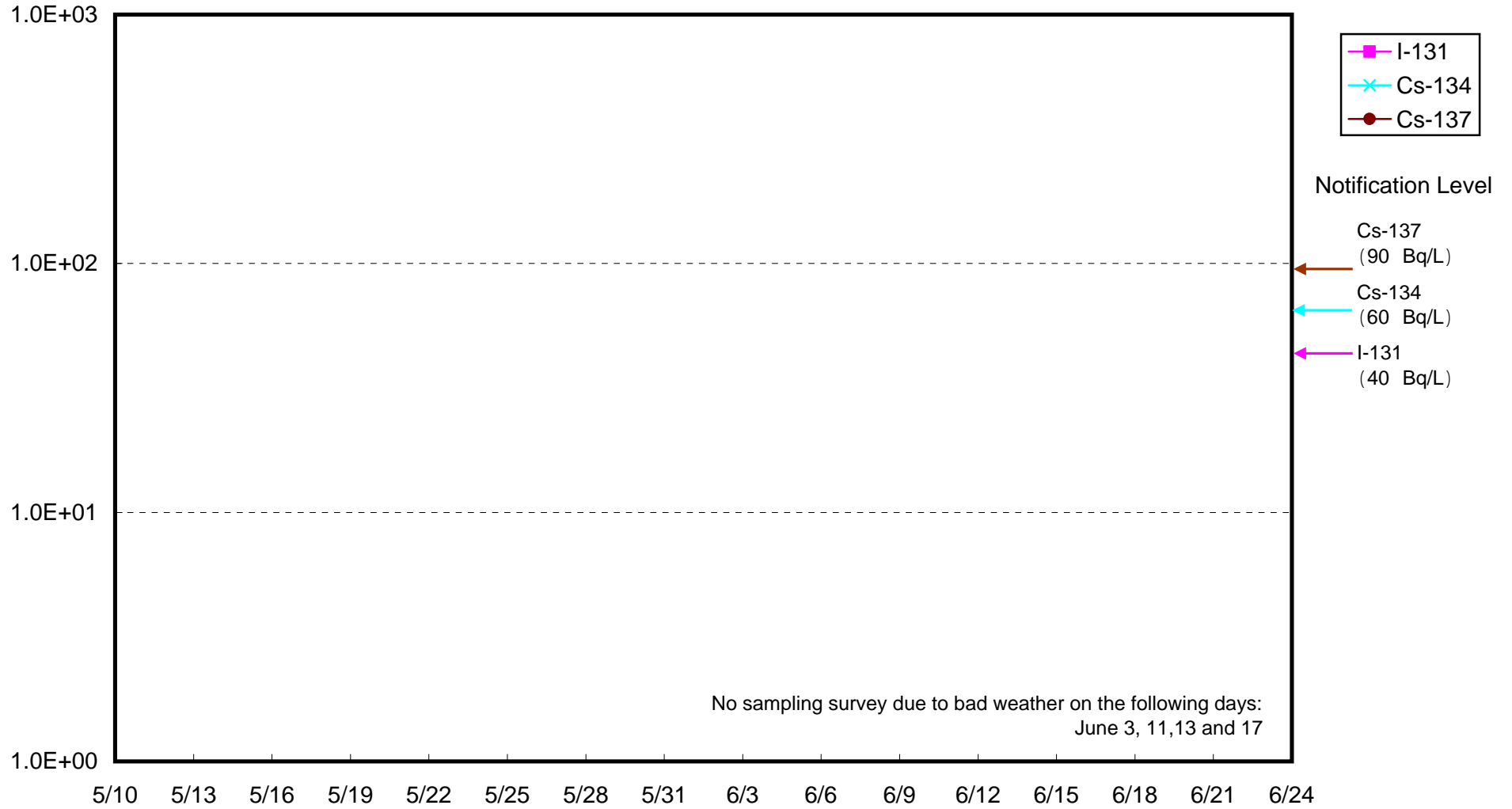
Radioactivity Density of Seawater around approx. 3km offshore of Iwasawa coast Lower Layer (Bq/L)



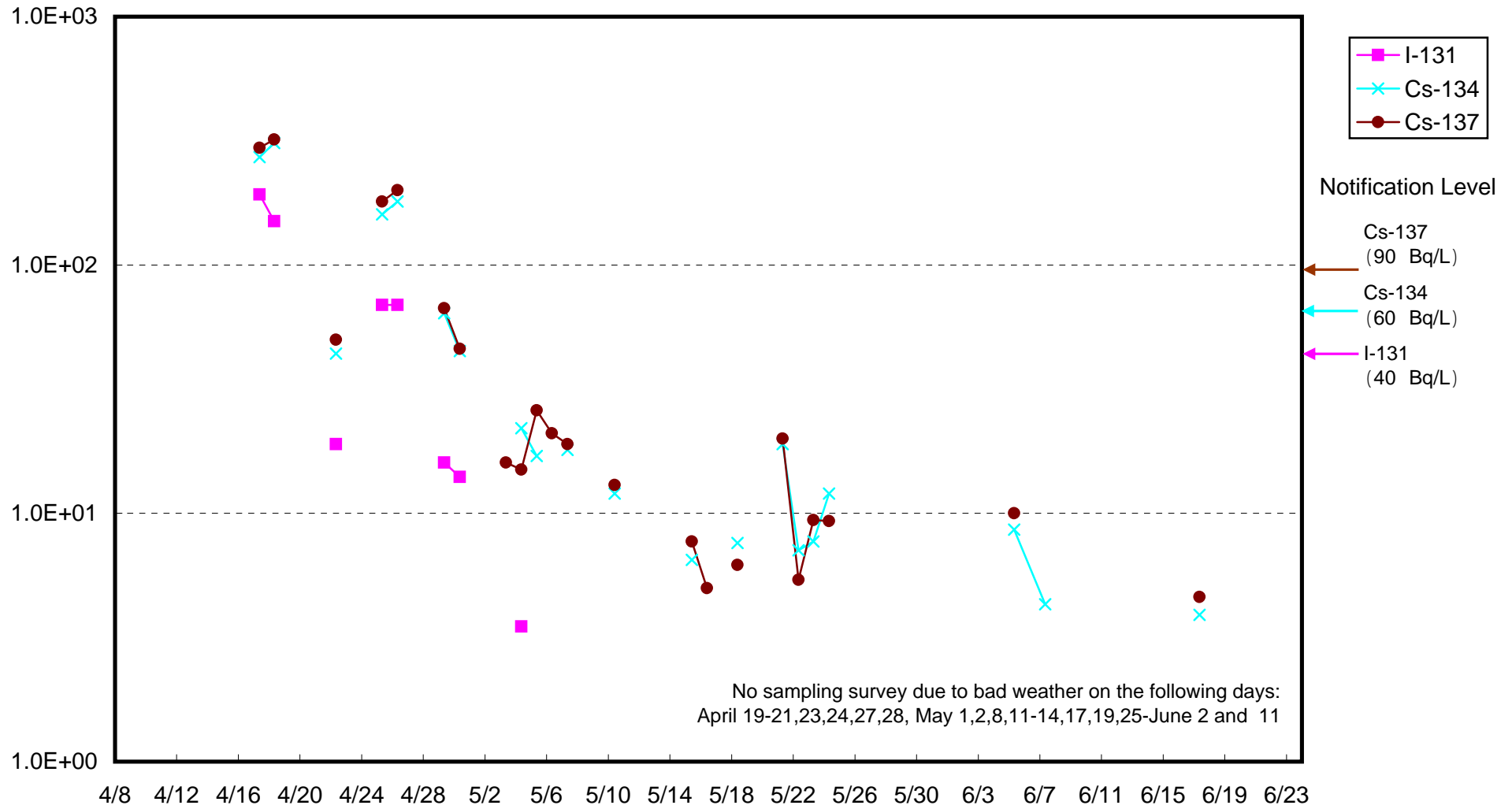
Radioactivity Density of Seawater around approx. 8km offshore of Odaka district Upper Layer (Bq/L)



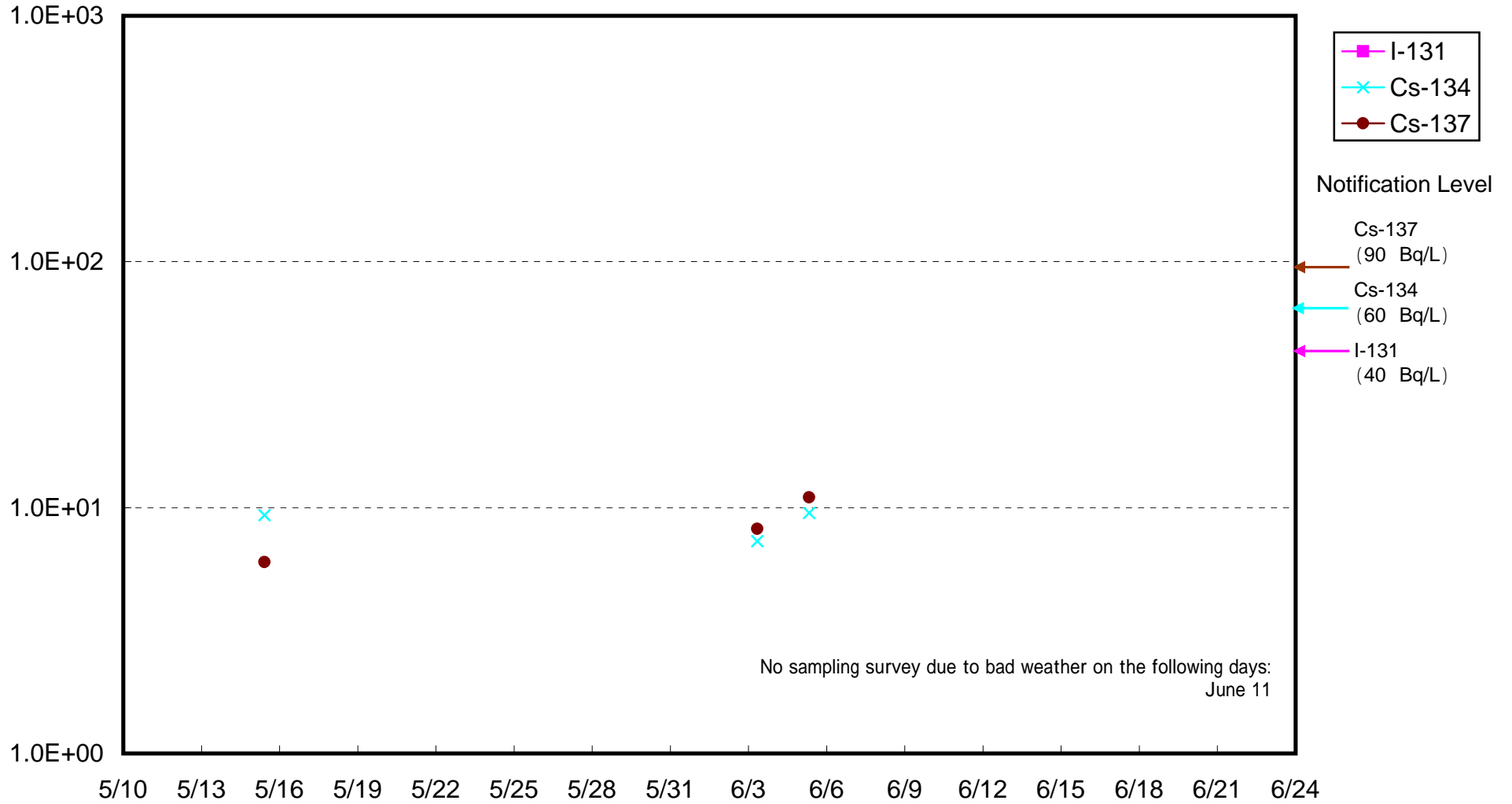
Radioactivity Density of Seawater around approx. 8km offshore of Odaka district Lower Layer (Bq/L)



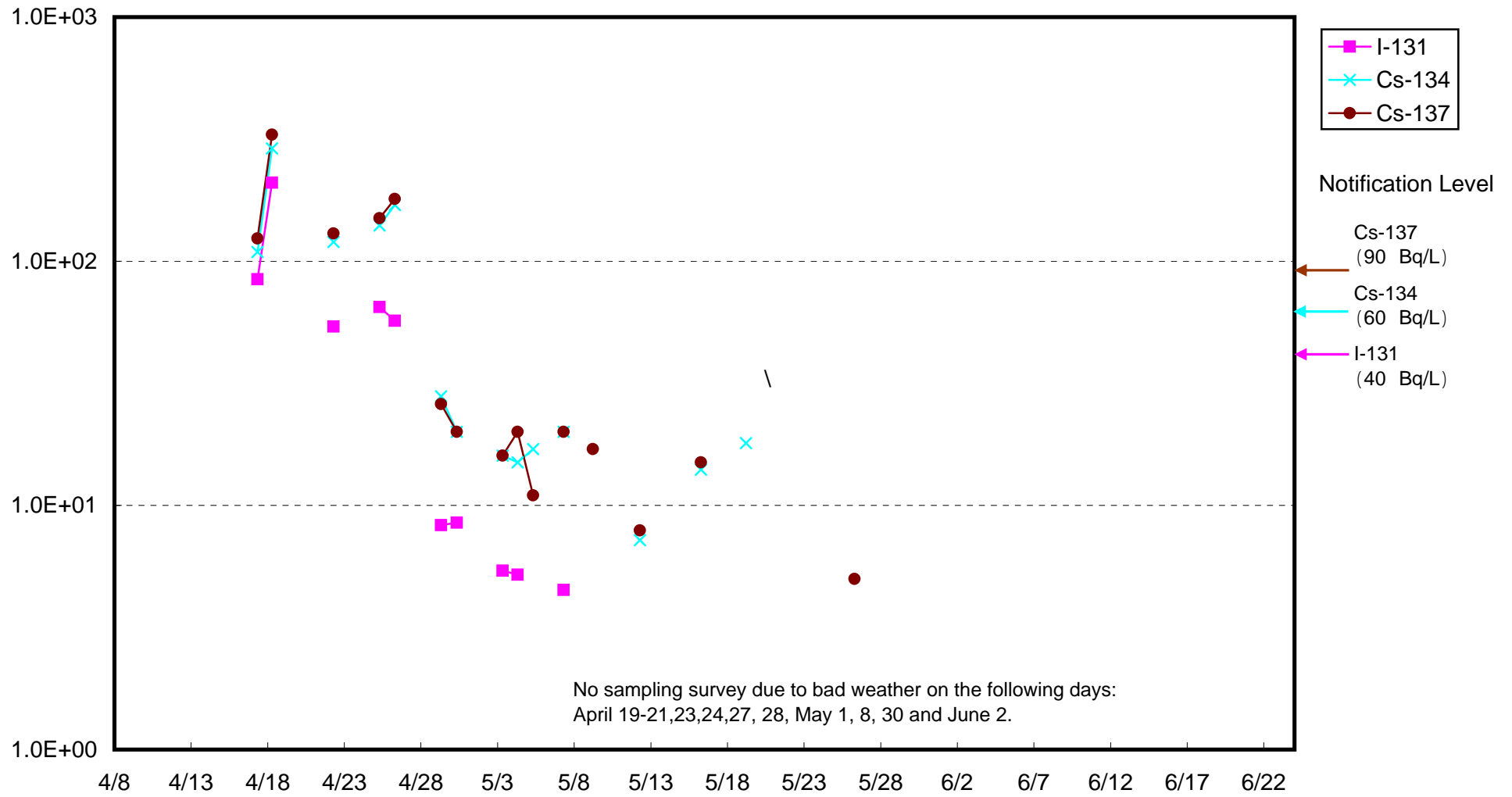
Radioactivity Density of Seawater around approx. 8km offshore of Iwasawa coast Upper Layer (Bq/L)



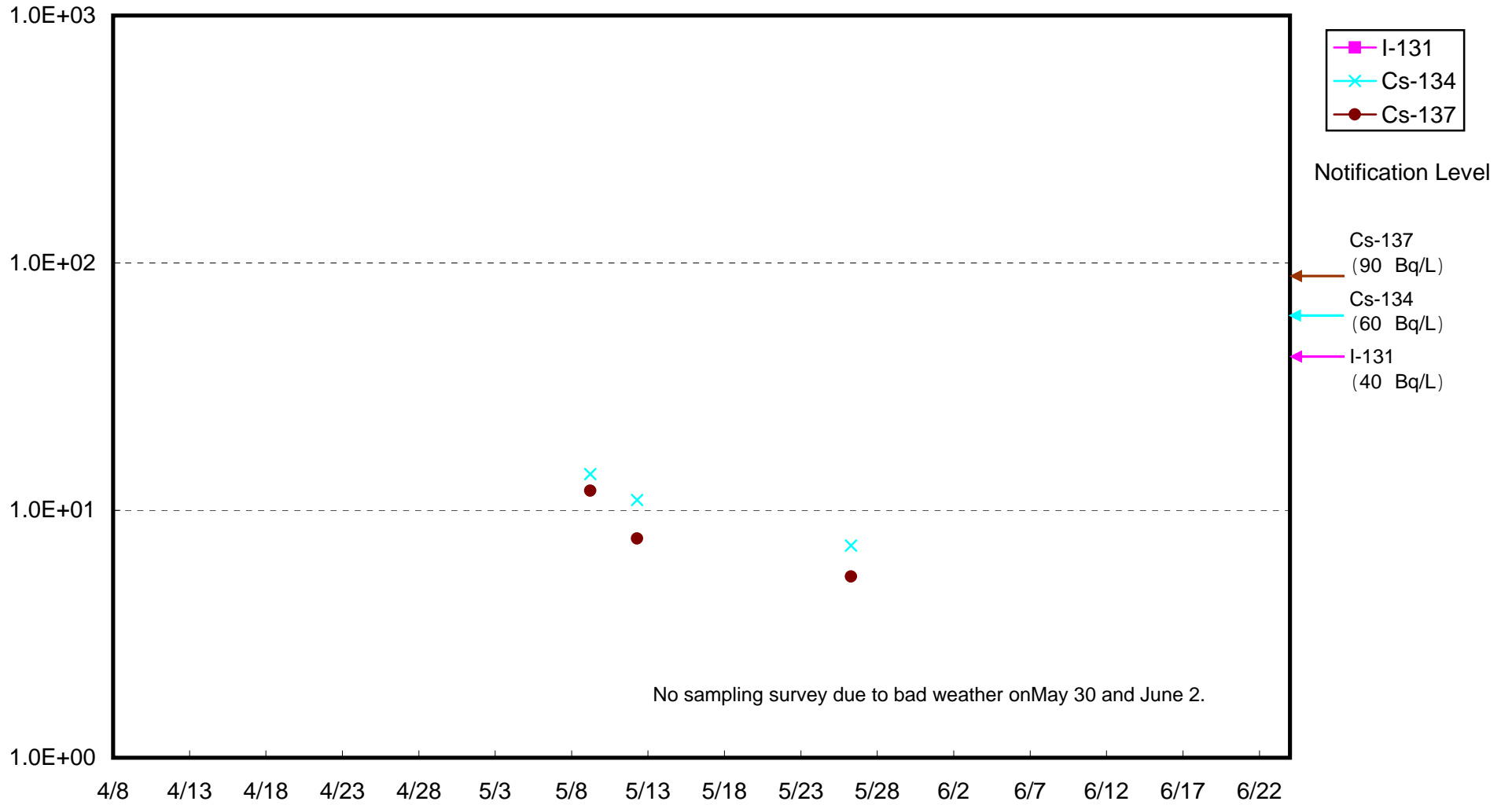
Radioactivity Density of Seawater around approx. 8km offshore of Iwasawa coast Lower Layer (Bq/L)



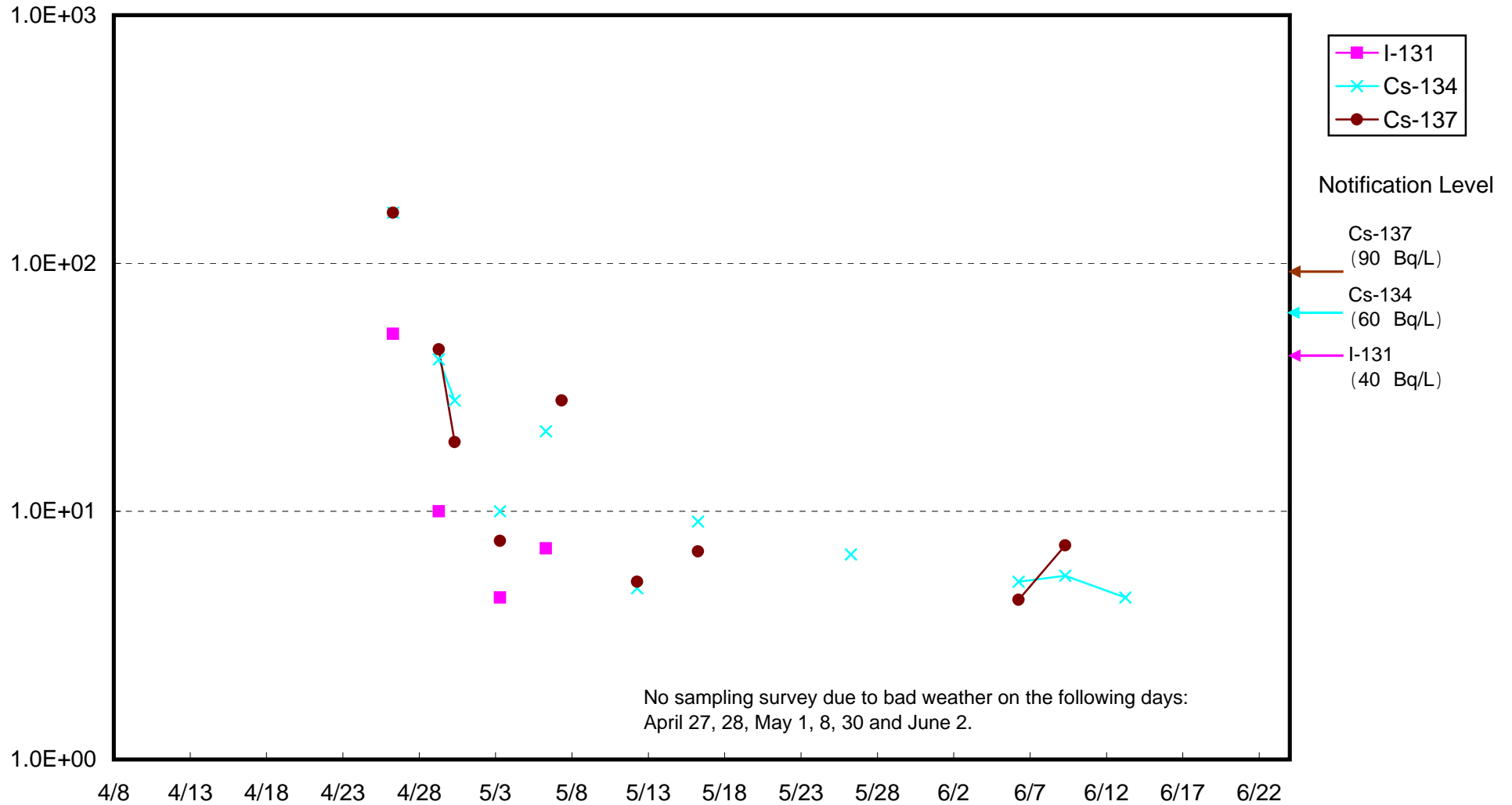
Radioactivity Density of Seawater around 3 km offshore of Northern part of Iwaki City, Upper layer (Bq/ L)



Radioactivity Density of Seawater around 3 km offshore of Northern part of Iwaki City, Lower layer (Bq/ L)

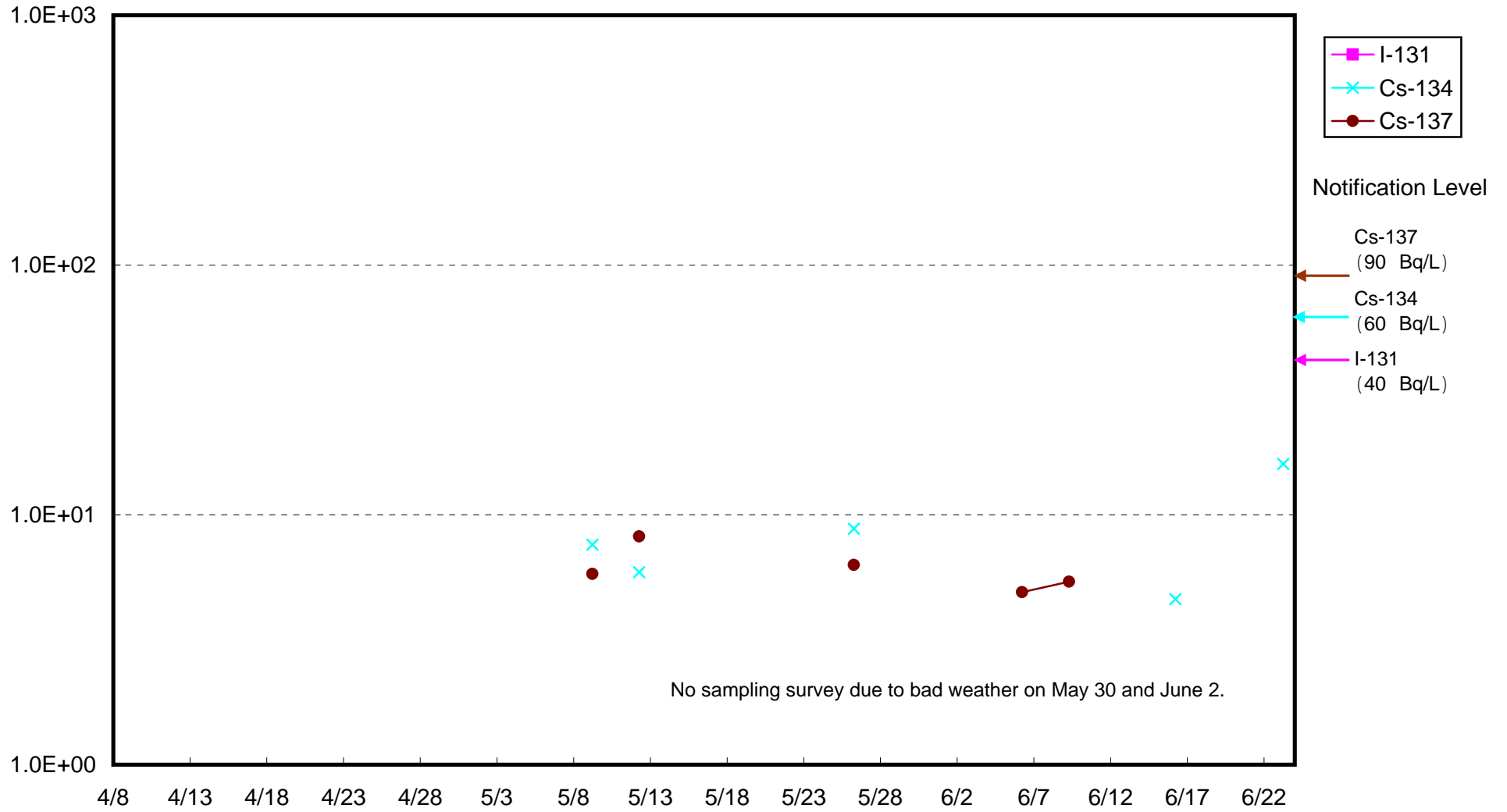


Radioactivity Density of Seawater around 3 km offshore of Natsugawa, Upper layer (Bq/ L)

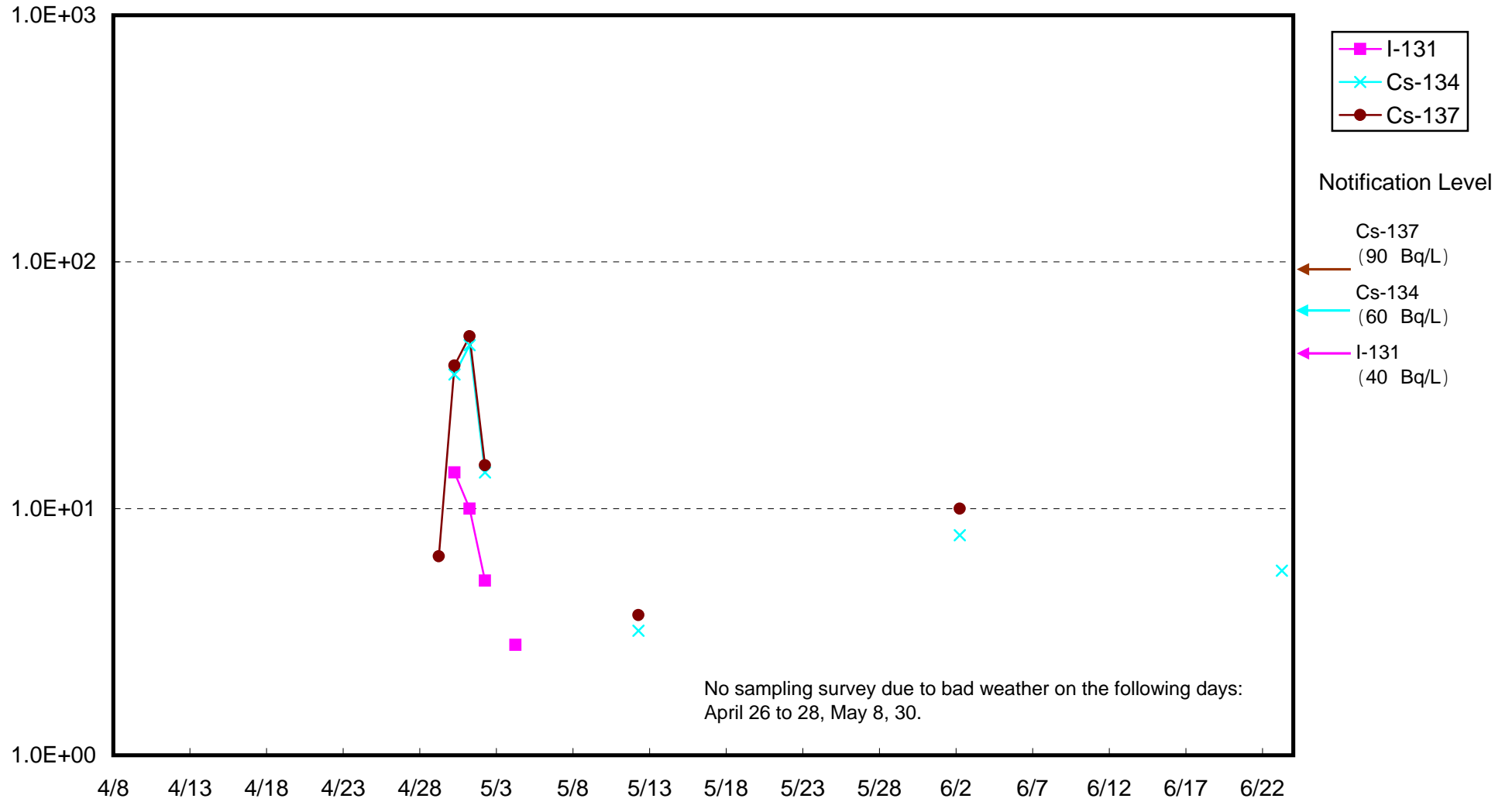




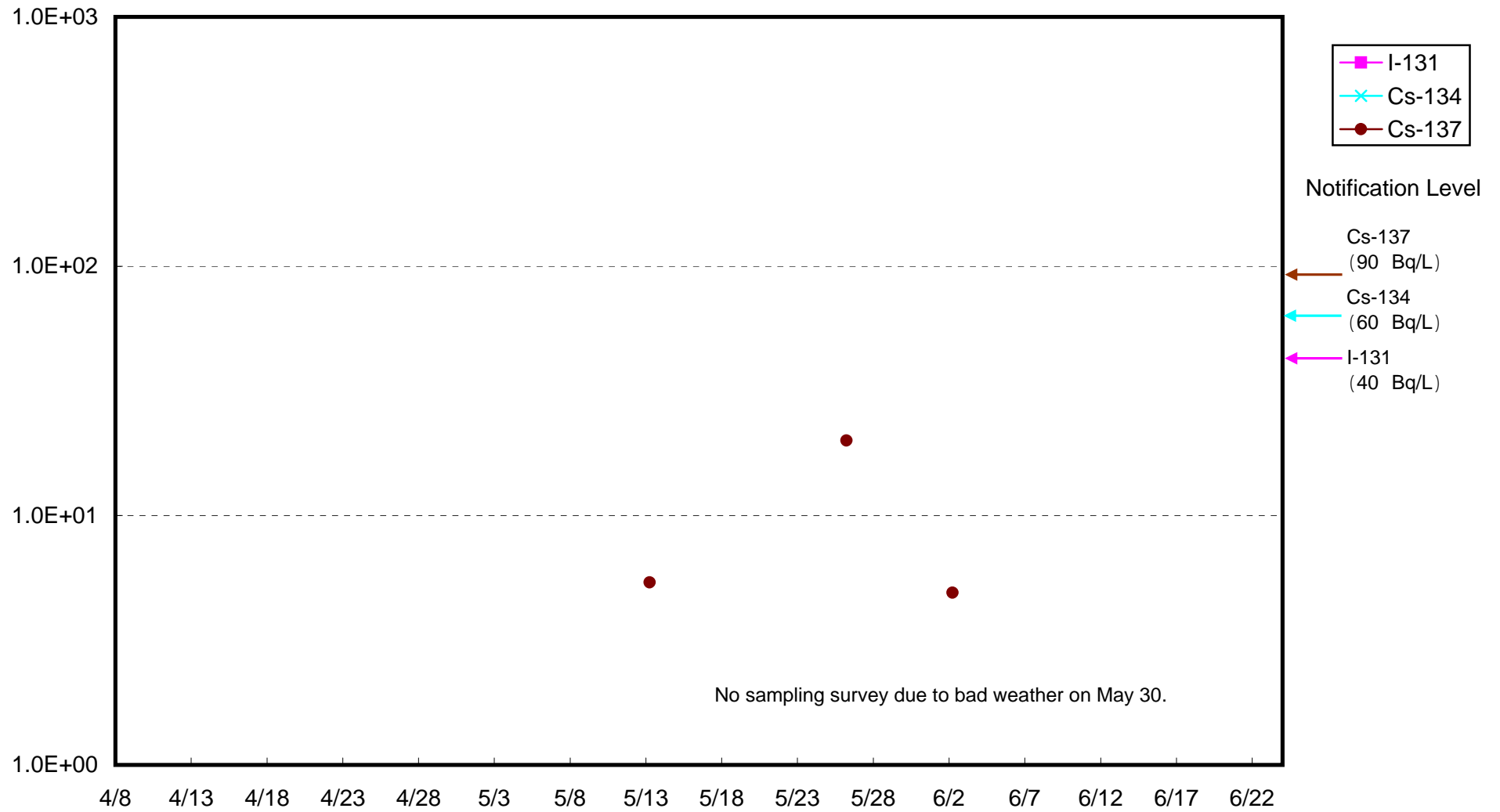
Radioactivity Density of Seawater around 3 km offshore of Natsugawa, Lower layer (Bq/ L)



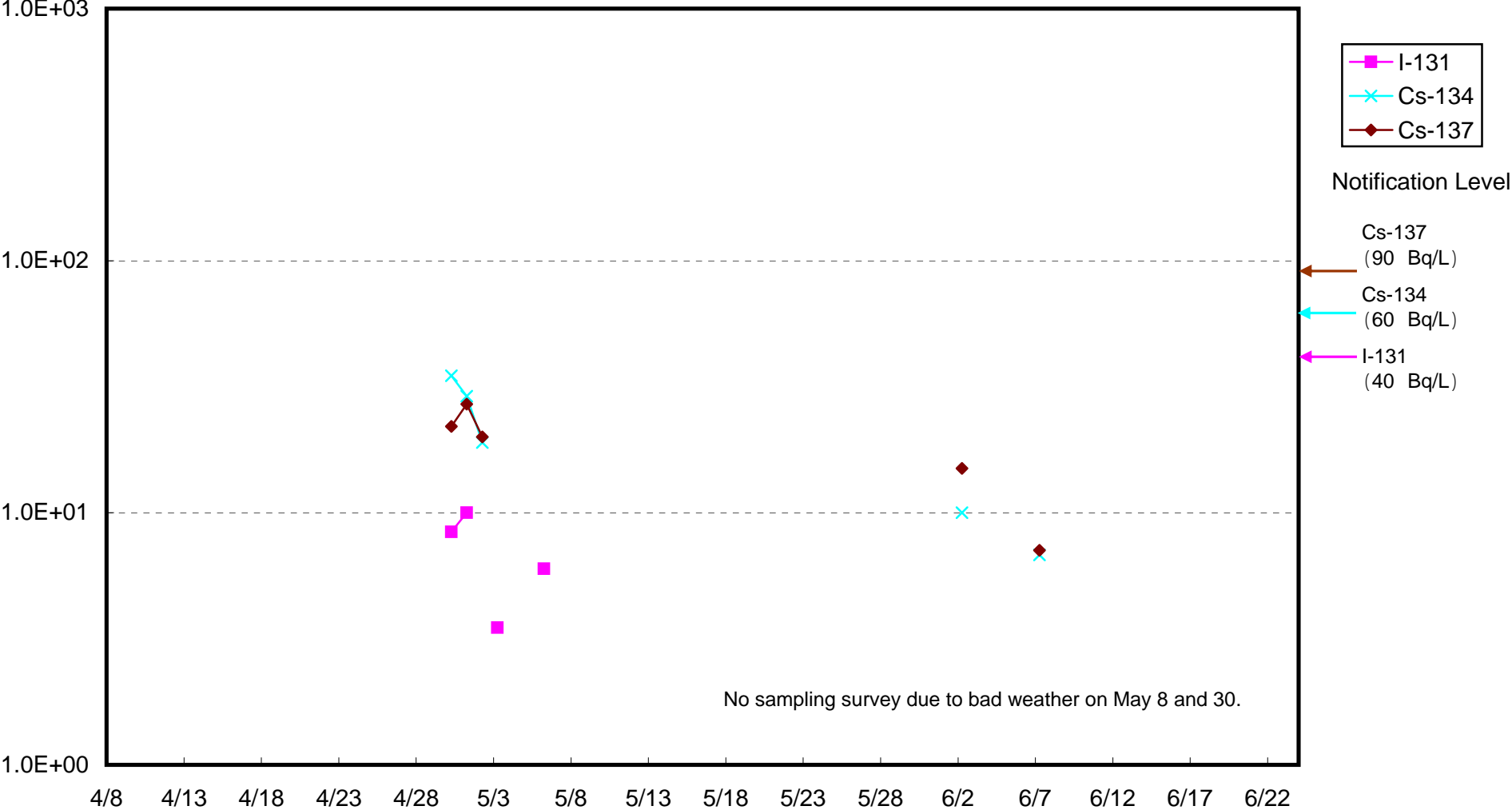
Radioactivity Density of Seawater around 3 km offshore of Onahama port, Upper layer (Bq/ L)



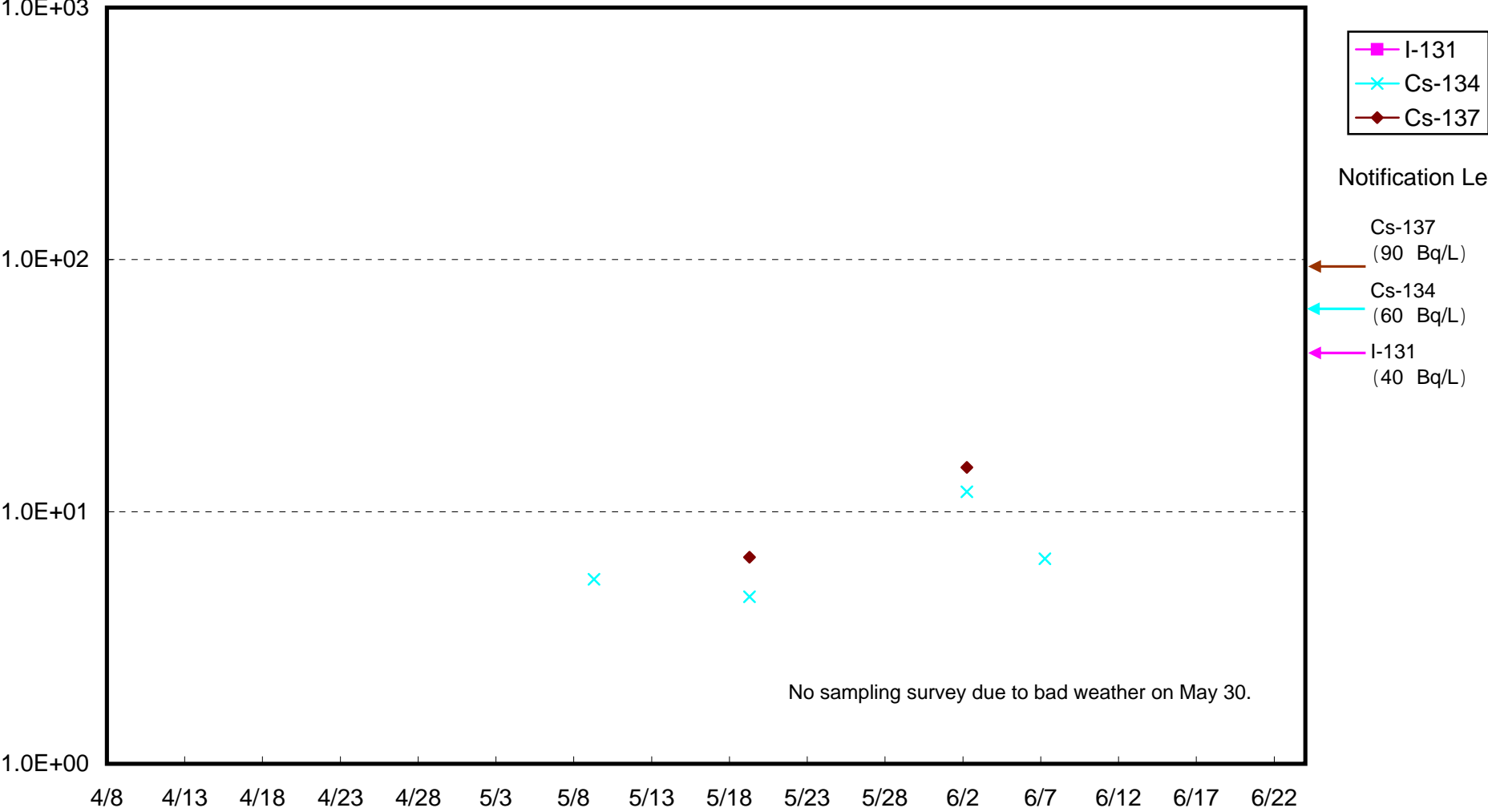
Radioactivity Density of Seawater around 3 km offshore of Onahama port, Lower layer (Bq/ L)



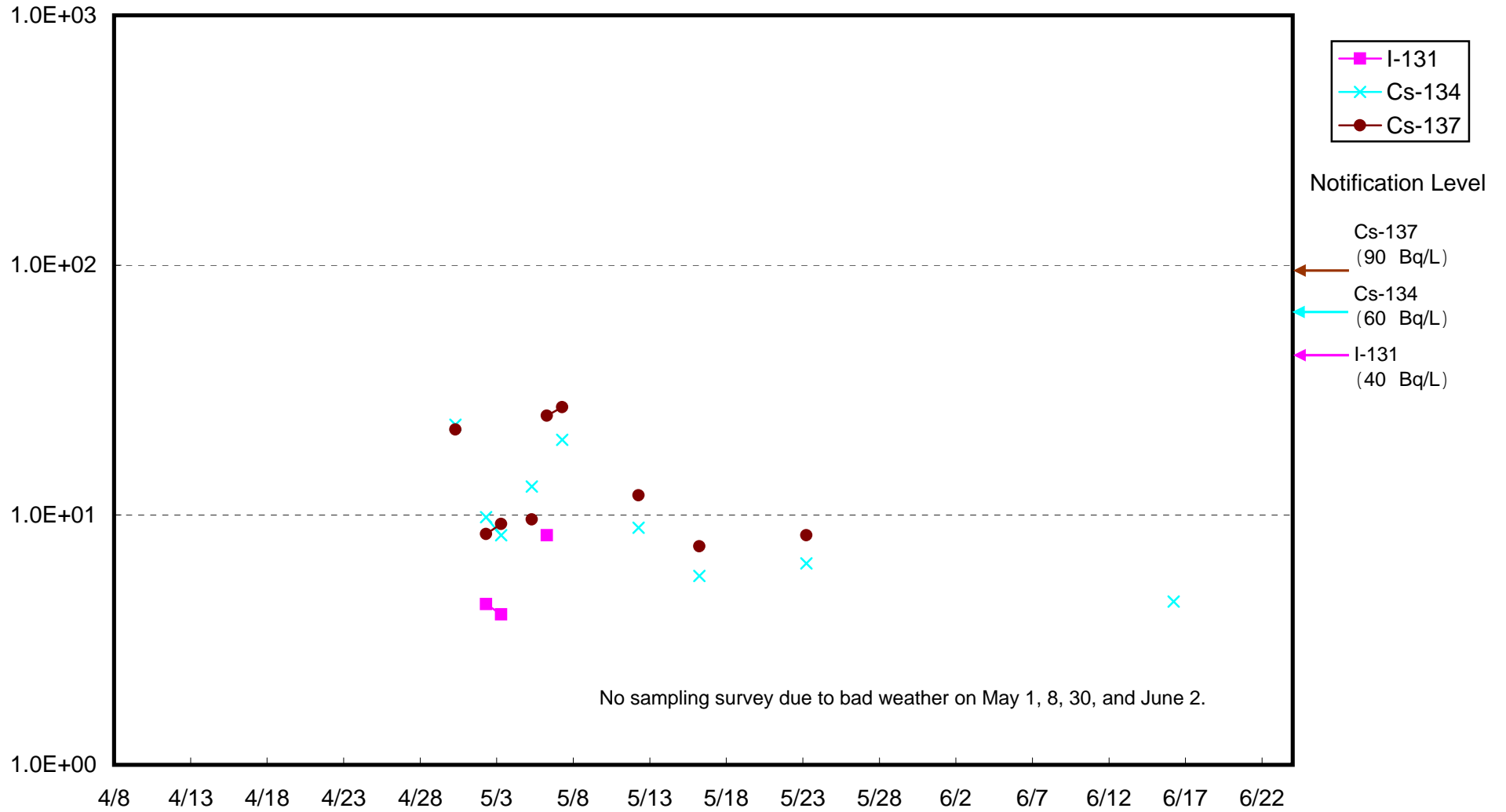
Radioactivity Density of Seawater around 3 km offshore of Ena, Upper layer (Bq/ L)



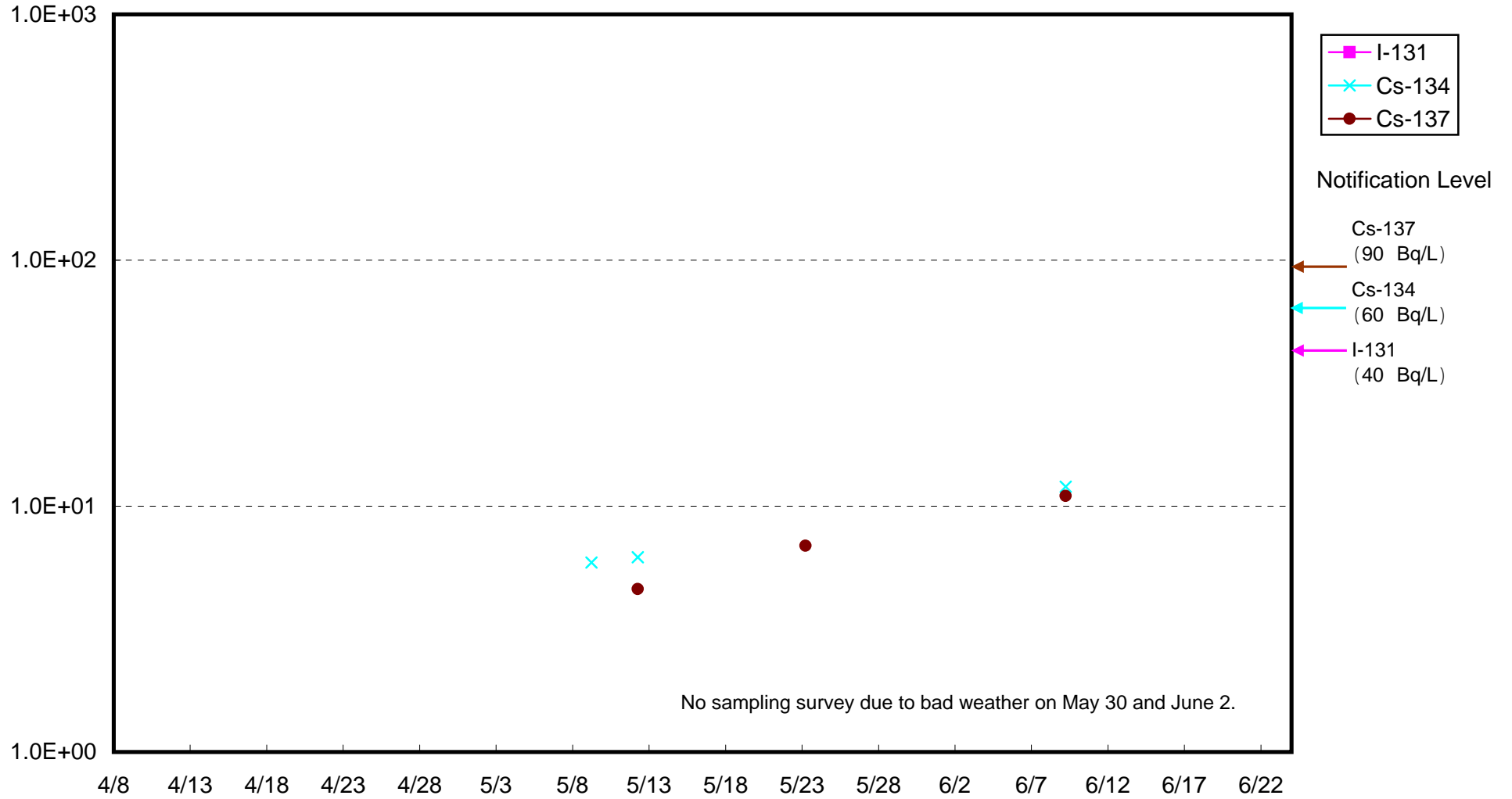
Radioactivity Density of Seawater around 3 km offshore of Ena, Lower layer (Bq/ L)



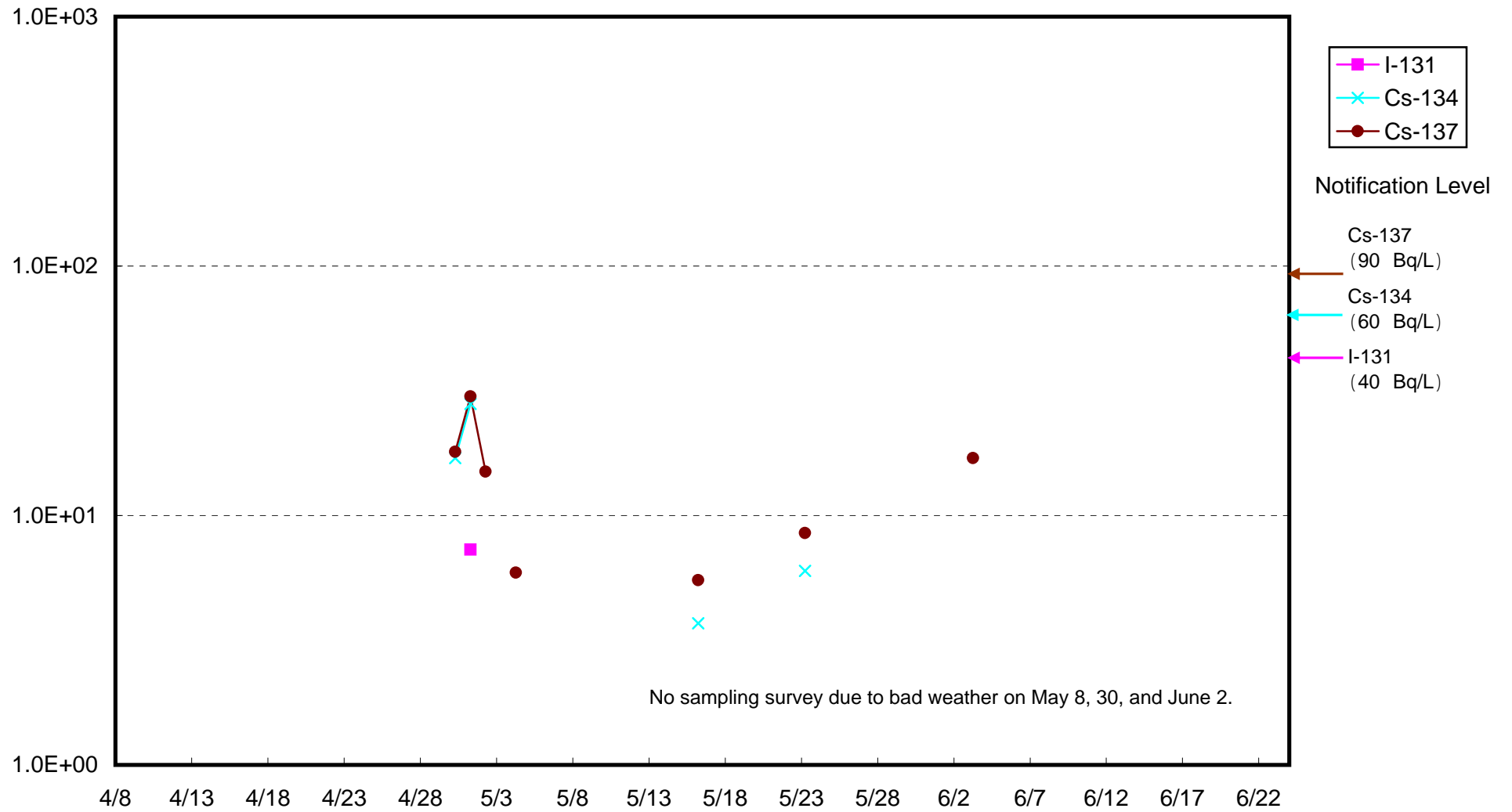
Radioactivity Density of Seawater around 3 km offshore of Numanouchi, Upper layer (Bq/ L)



Radioactivity Density of Seawater around 3 km offshore of Numanouchi, Lower layer (Bq/ L)



Radioactivity Density of Seawater around 3 km offshore of Toyoma, Upper layer (Bq/ L)





Radioactivity Density of Seawater around 3 km offshore of Toyoma, Lower layer (Bq/ L)Radioactivity

