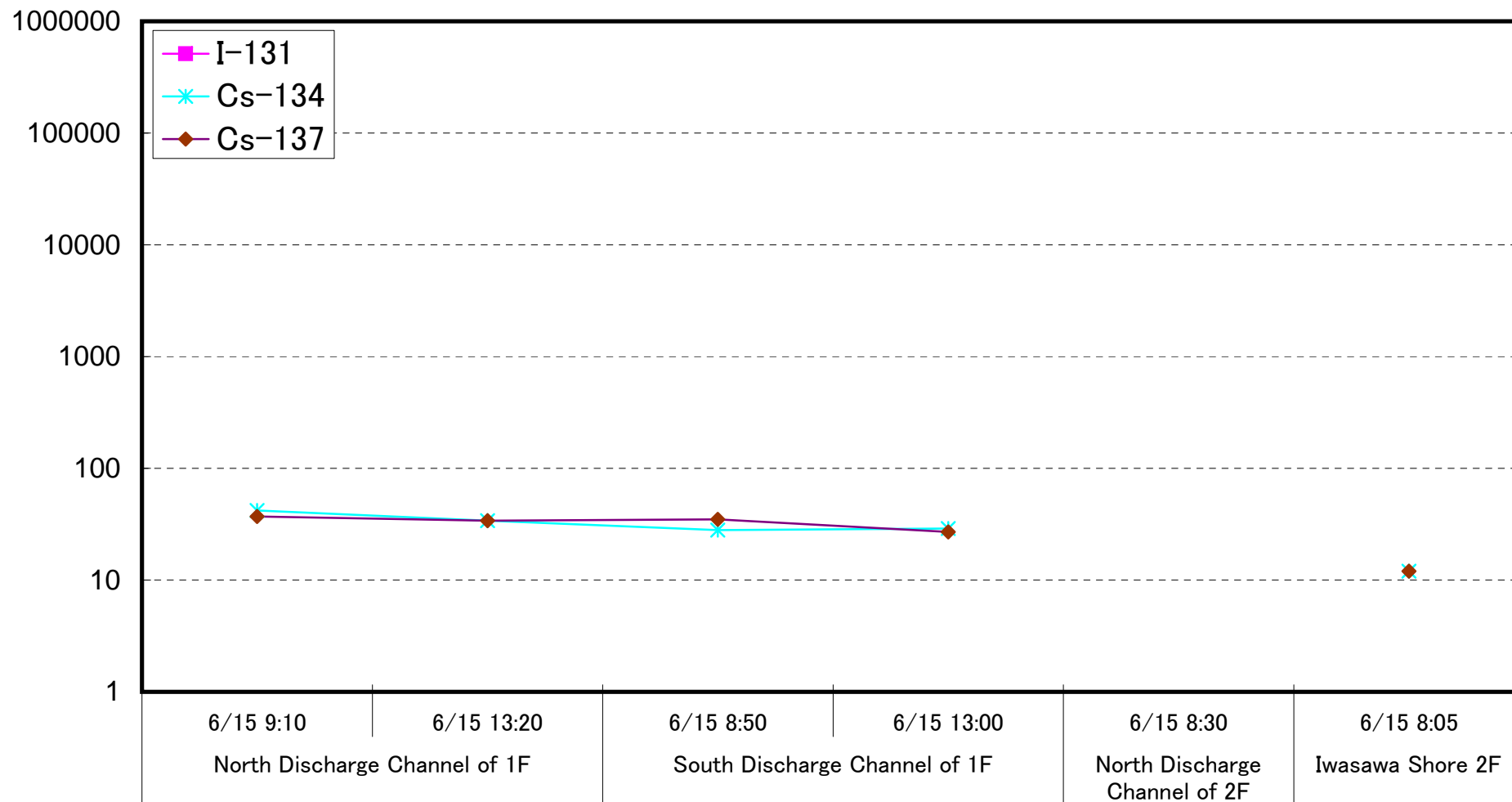
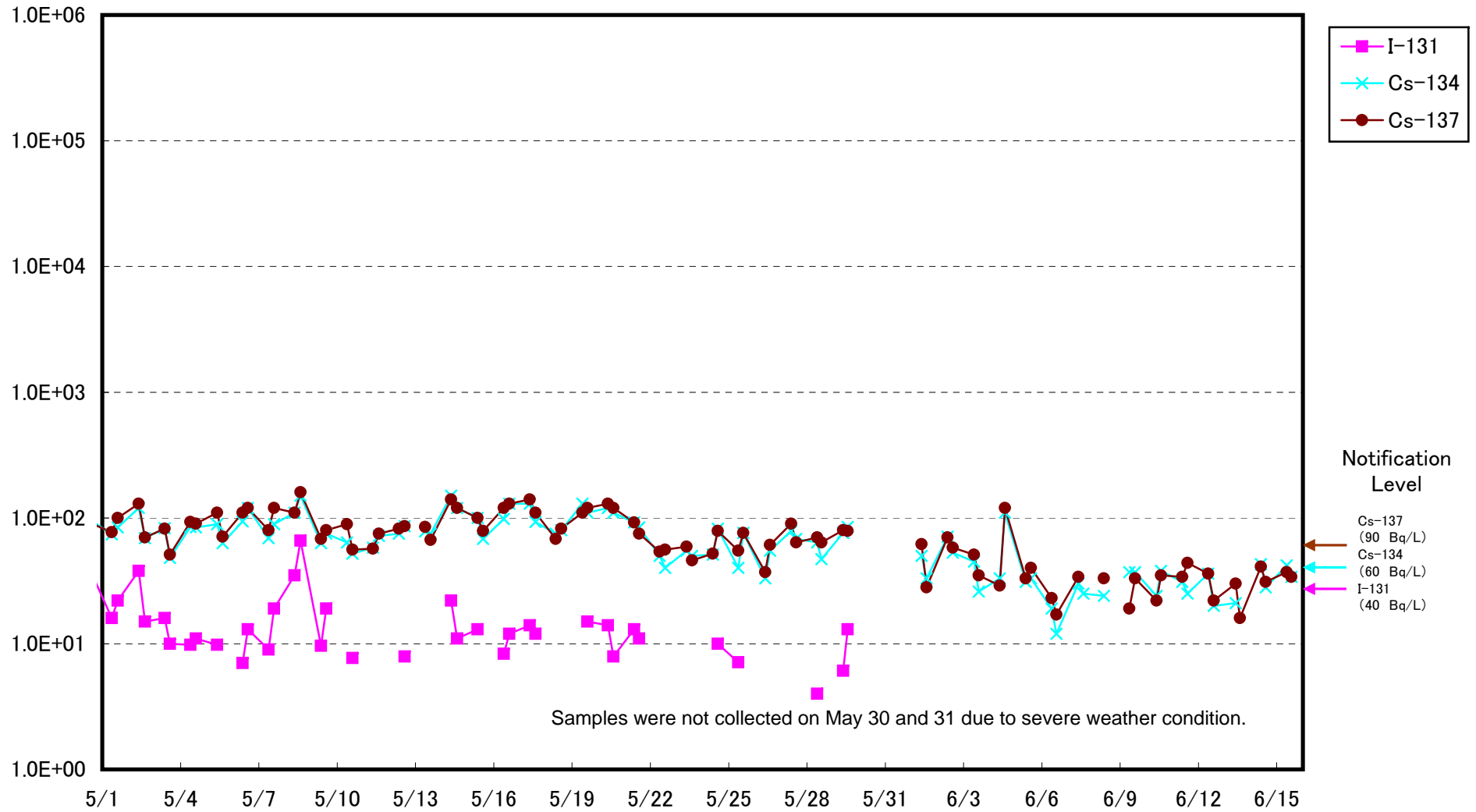


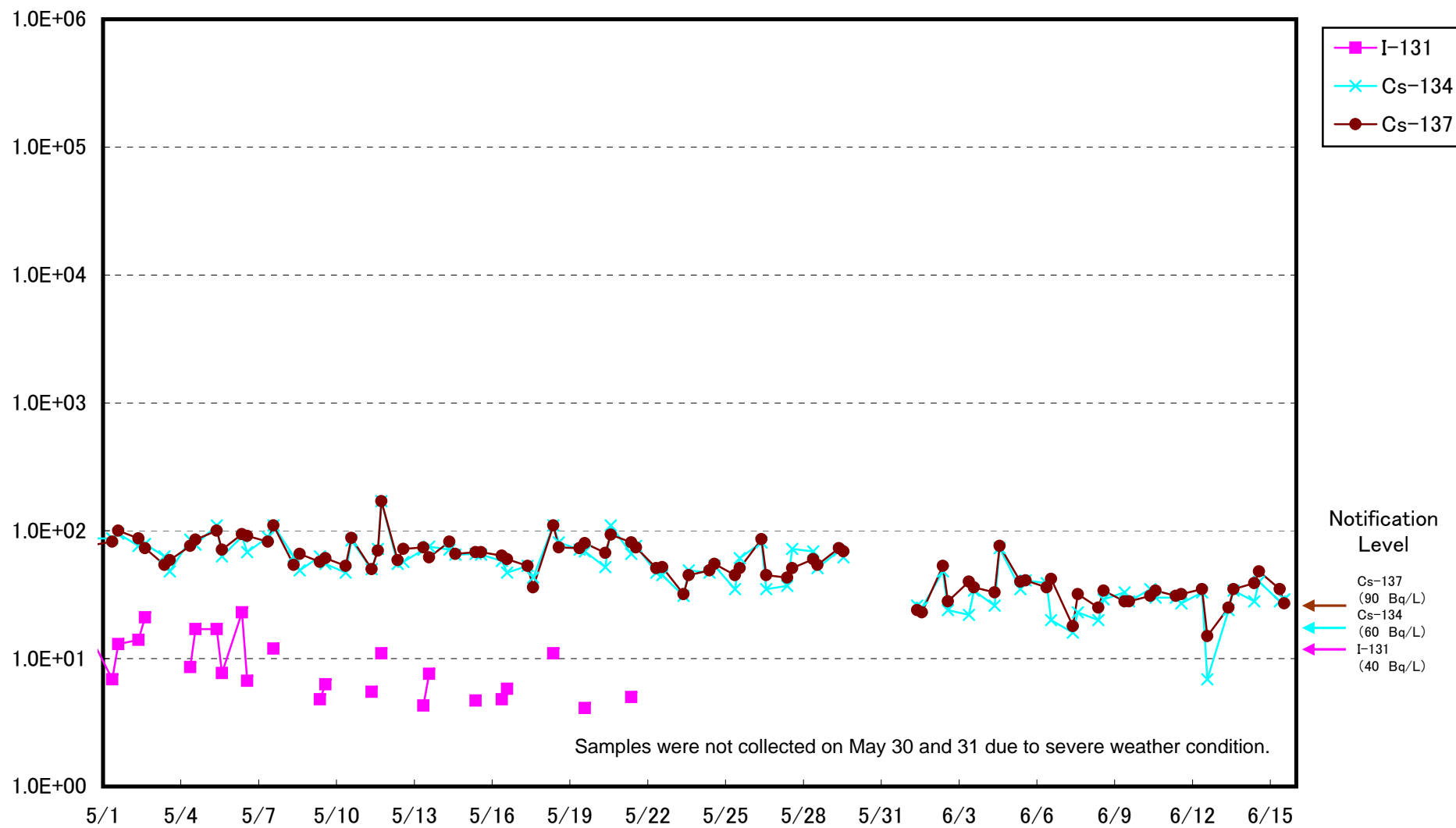
Radioactive Density of Seawater (Bq/L)



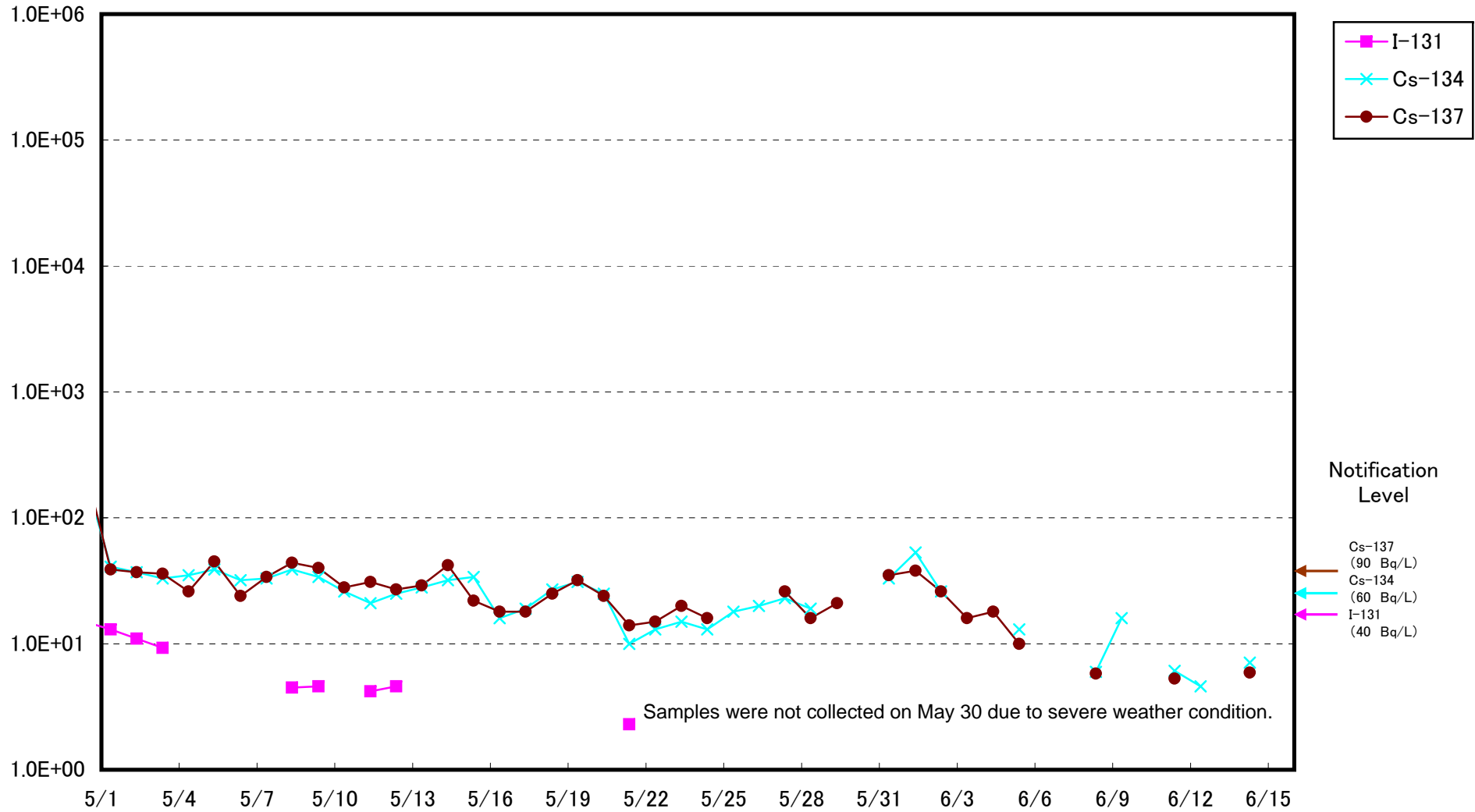
Radioactivity Density of Seawater at North of 1F5-6 Discharge Channel
 (approx.30m north of 5-6 discharge channel) (Bq/L)



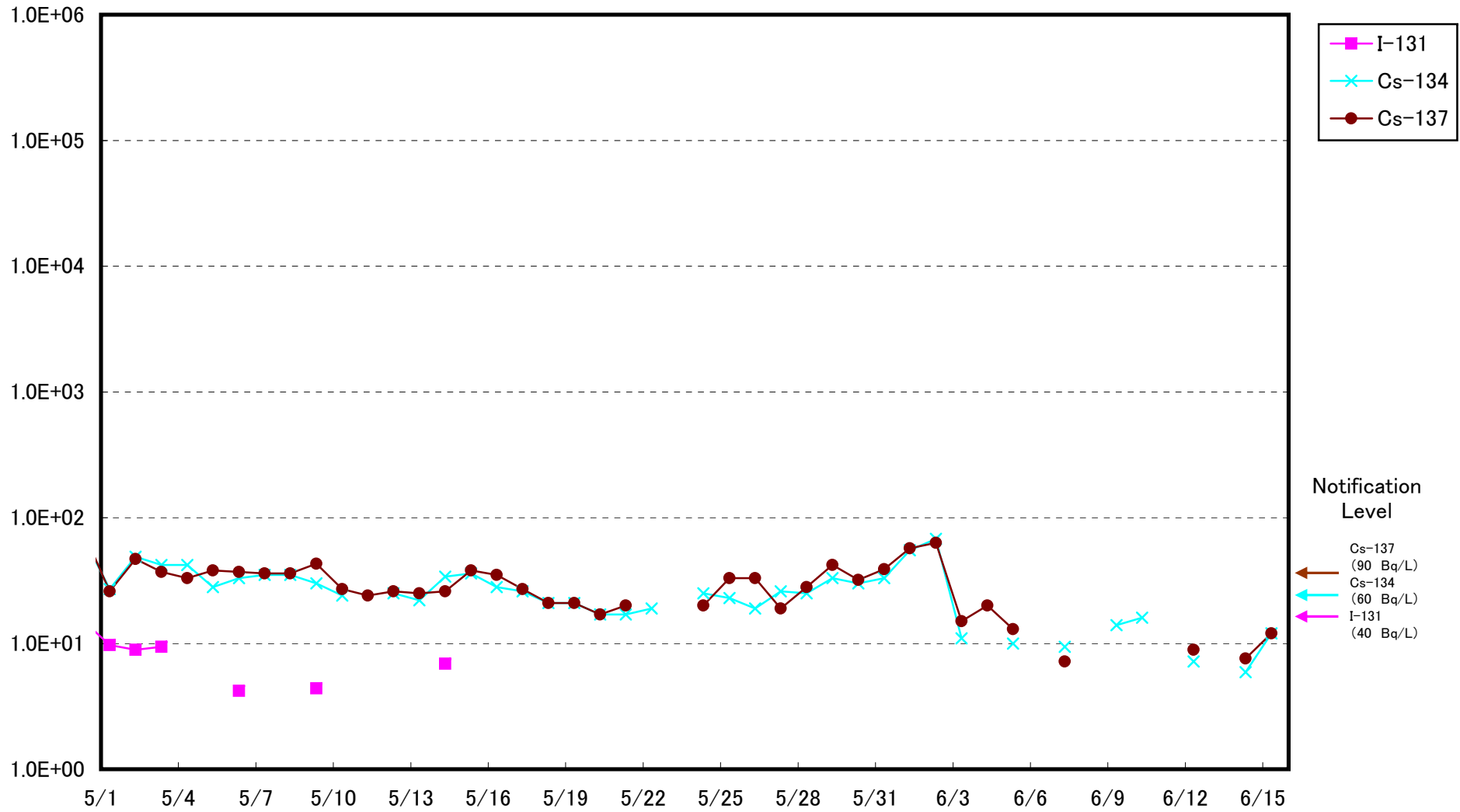
Radioactivity Density of Seawater at South Discharge Channel of 1F (Bq/L)



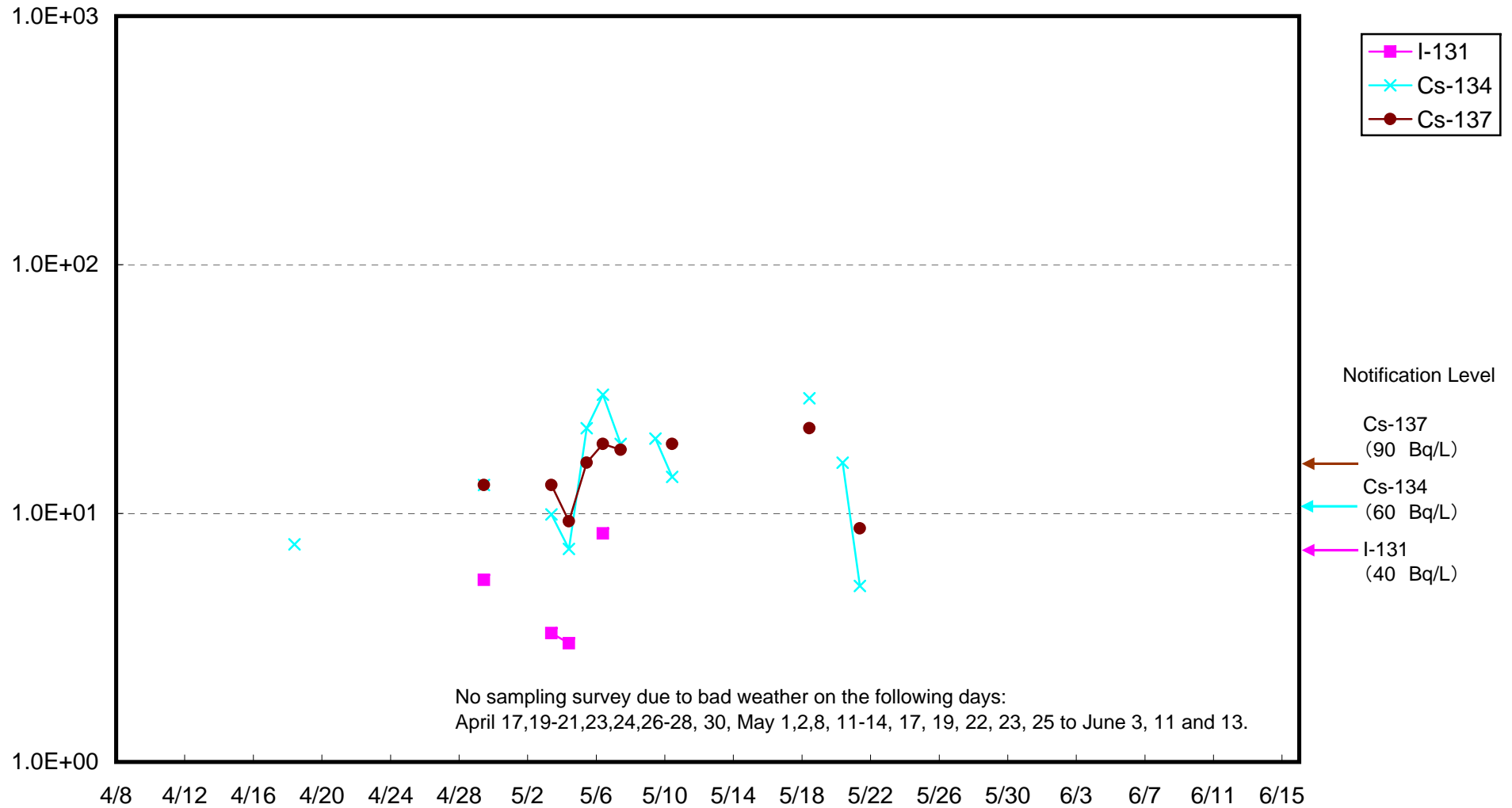
Radioactivity Density of Seawater at North Discharge Channel of 2F (Bq/L)



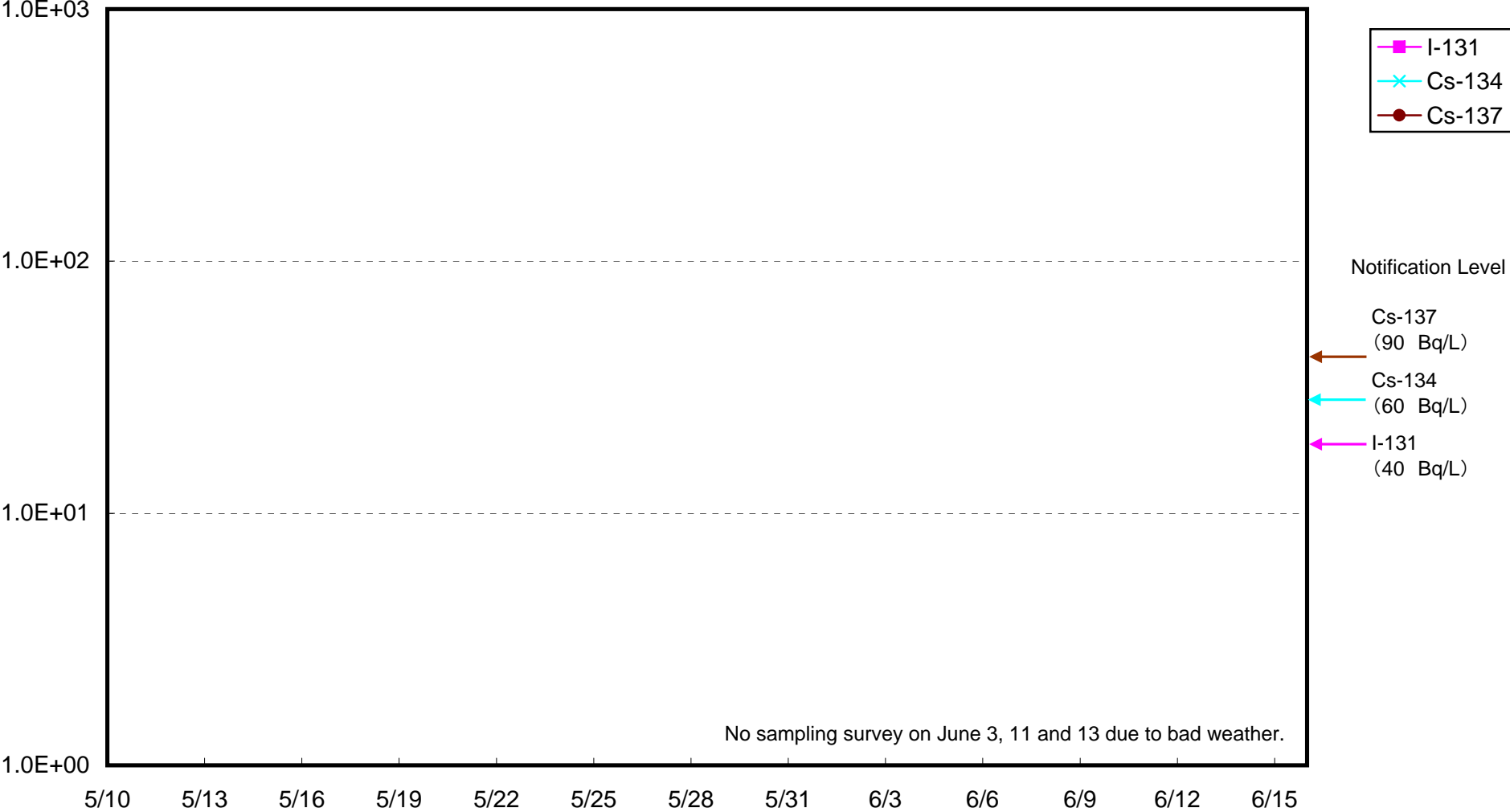
Radioactivity Density of Seawater at Iwasawa Shore 2F (Bq/L)



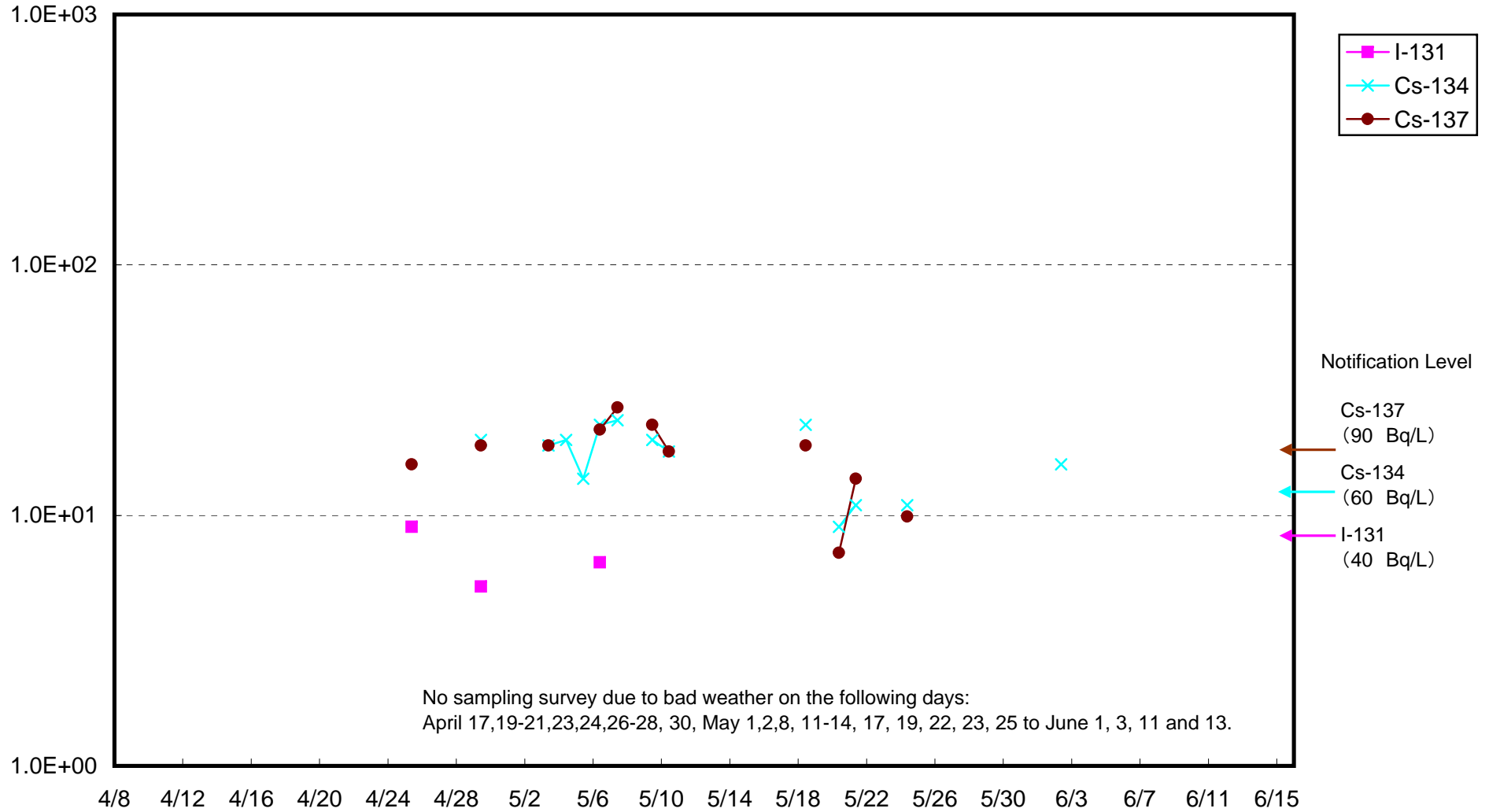
Radioactivity Density of Seawater around 3 km offshore of Haramachi-ku Upper layer (Bq/ L)



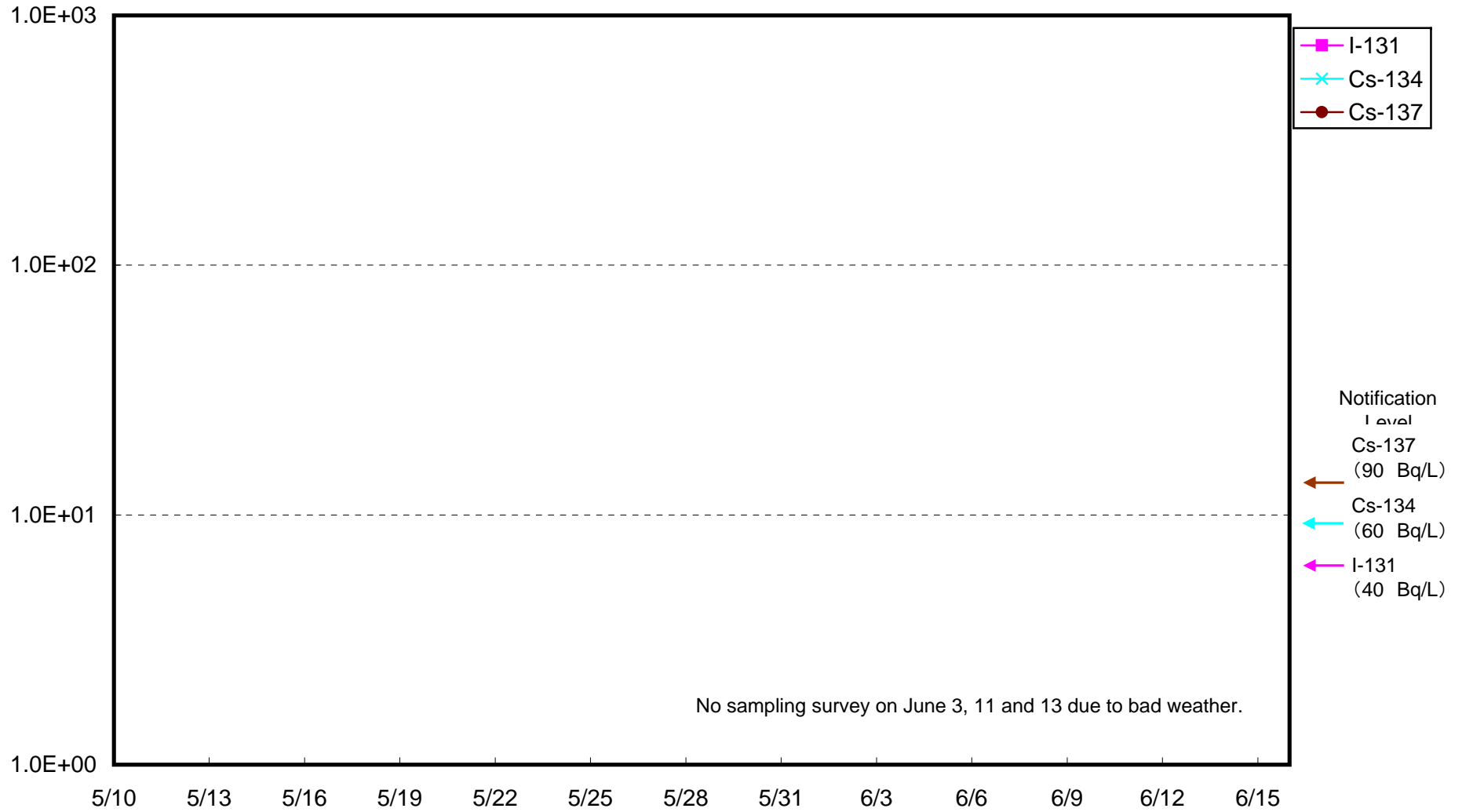
Radioactivity Density of Seawater around 3 km offshore of Haramachi-ku Lower layer (Bq/ L)



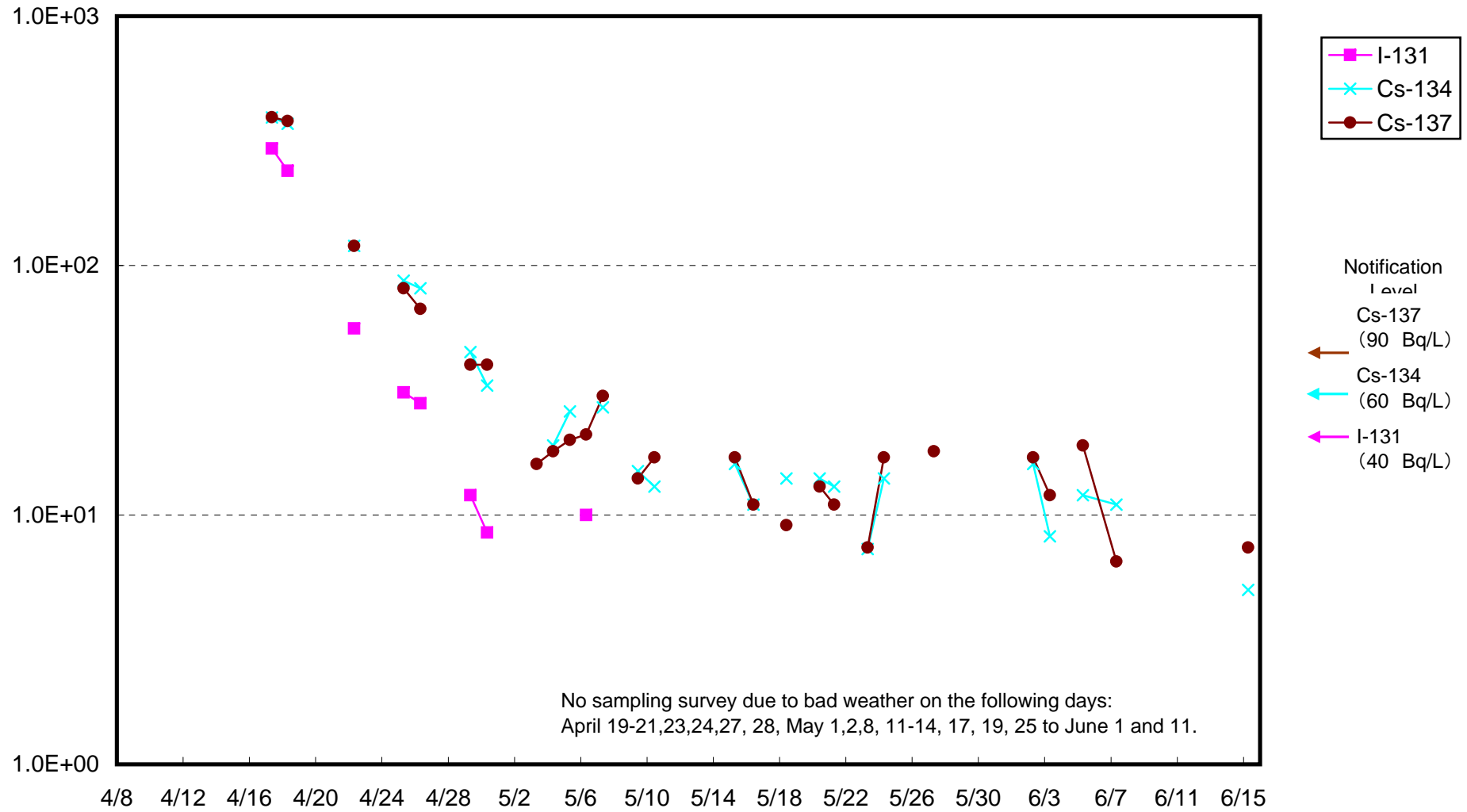
Radioactivity Density of Seawater around 3 km offshore of Odaka-ku Upper layer (Bq/L)



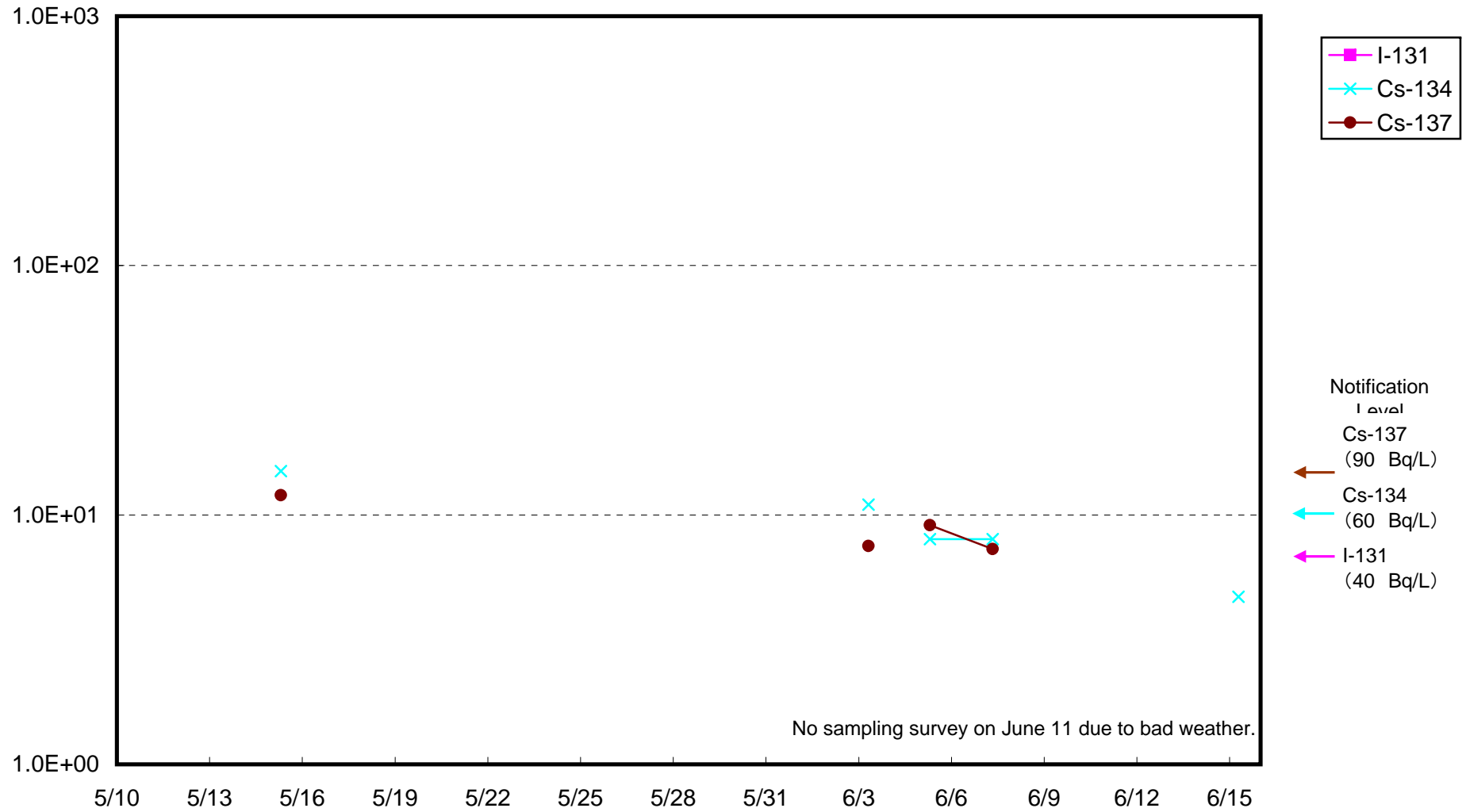
Radioactivity Density of Seawater around 3 km offshore of Odaka-ku Lower layer (Bq/L)



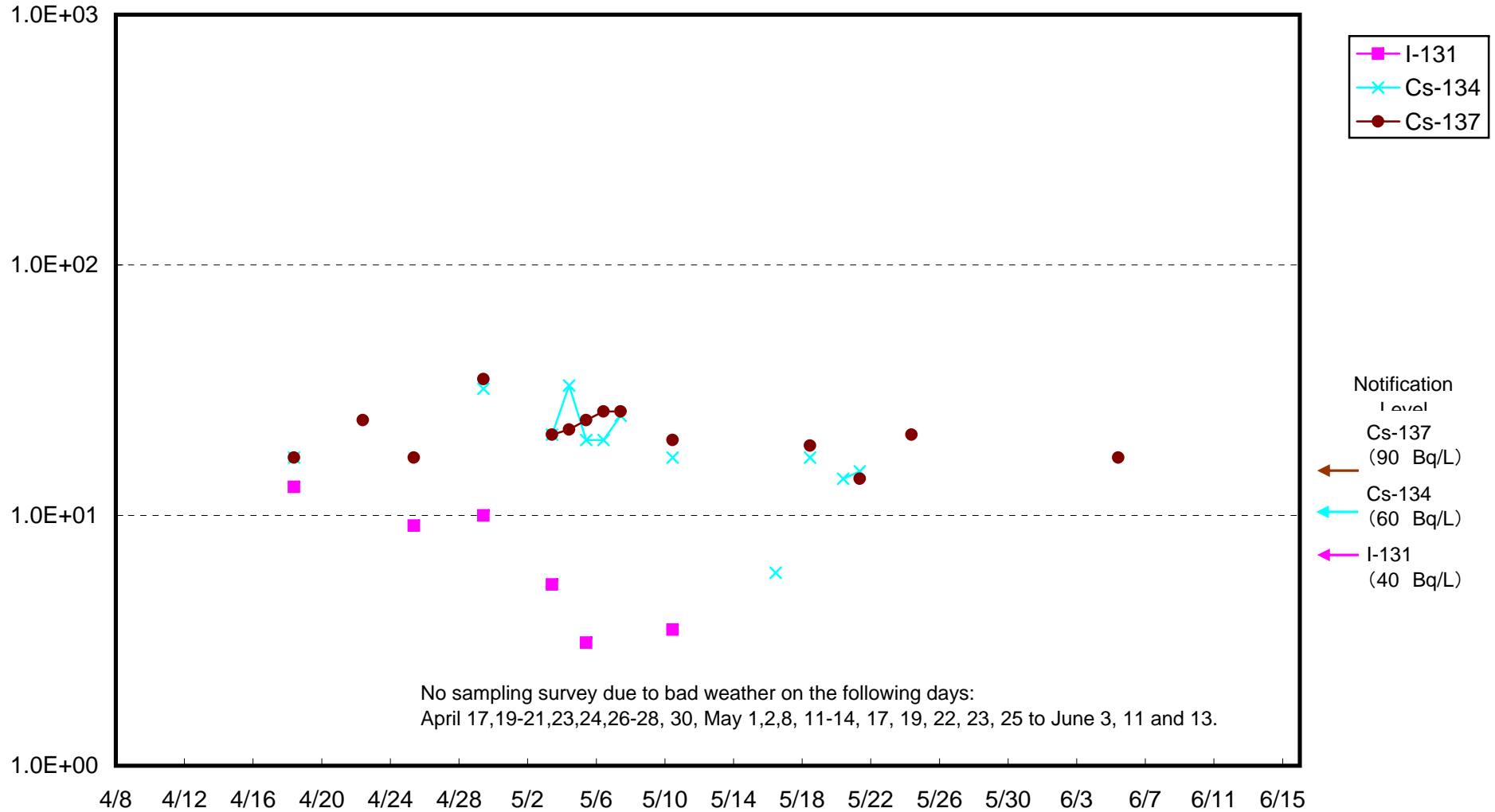
Radioactivity Density of Seawater around approx. 3km offshore of Iwasawa Shore Upper layer (Bq/L)



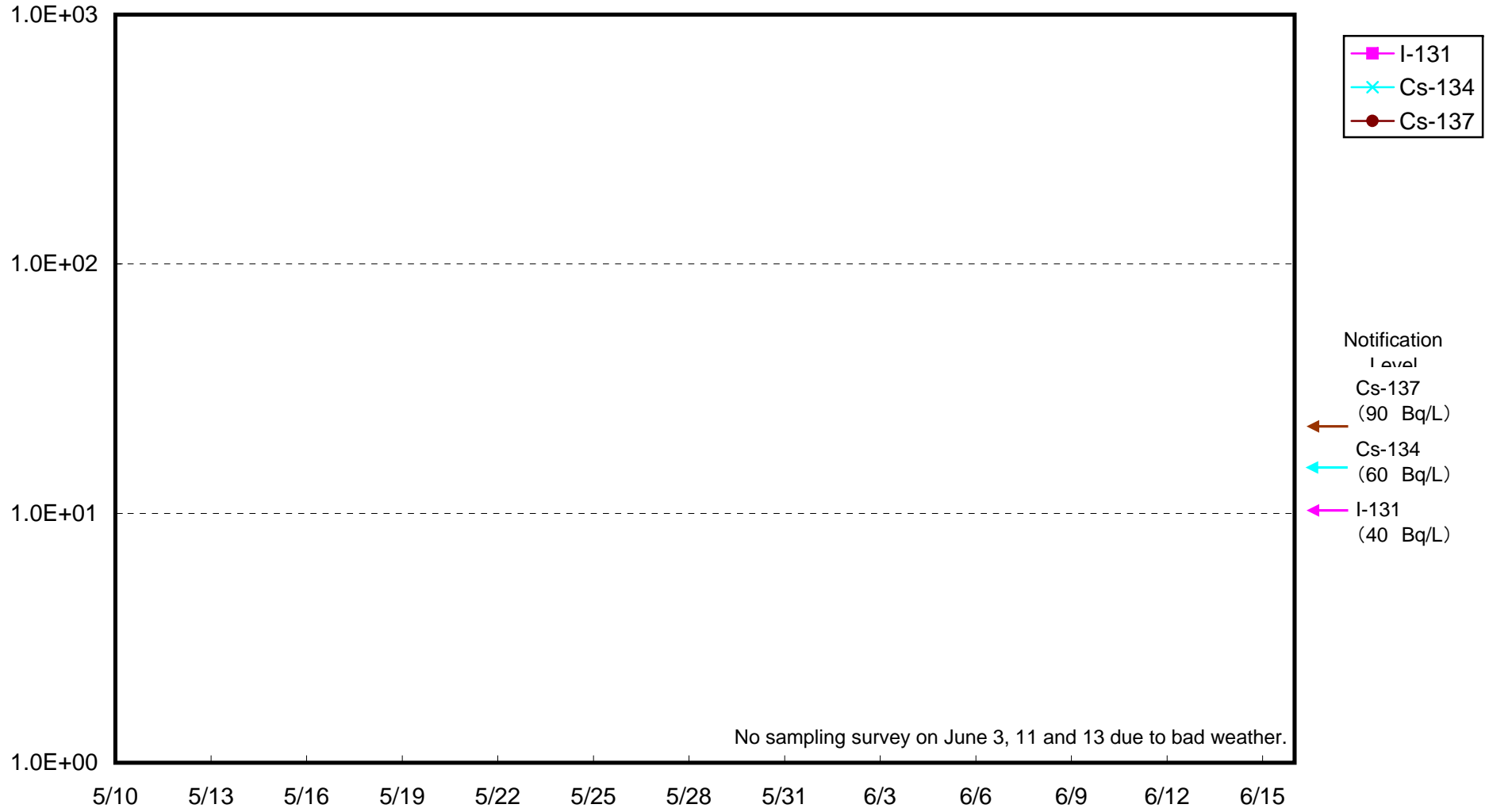
Radioactivity Density of Seawater around approx. 3km offshore of Iwasawa Shore Lower layer (Bq/L)



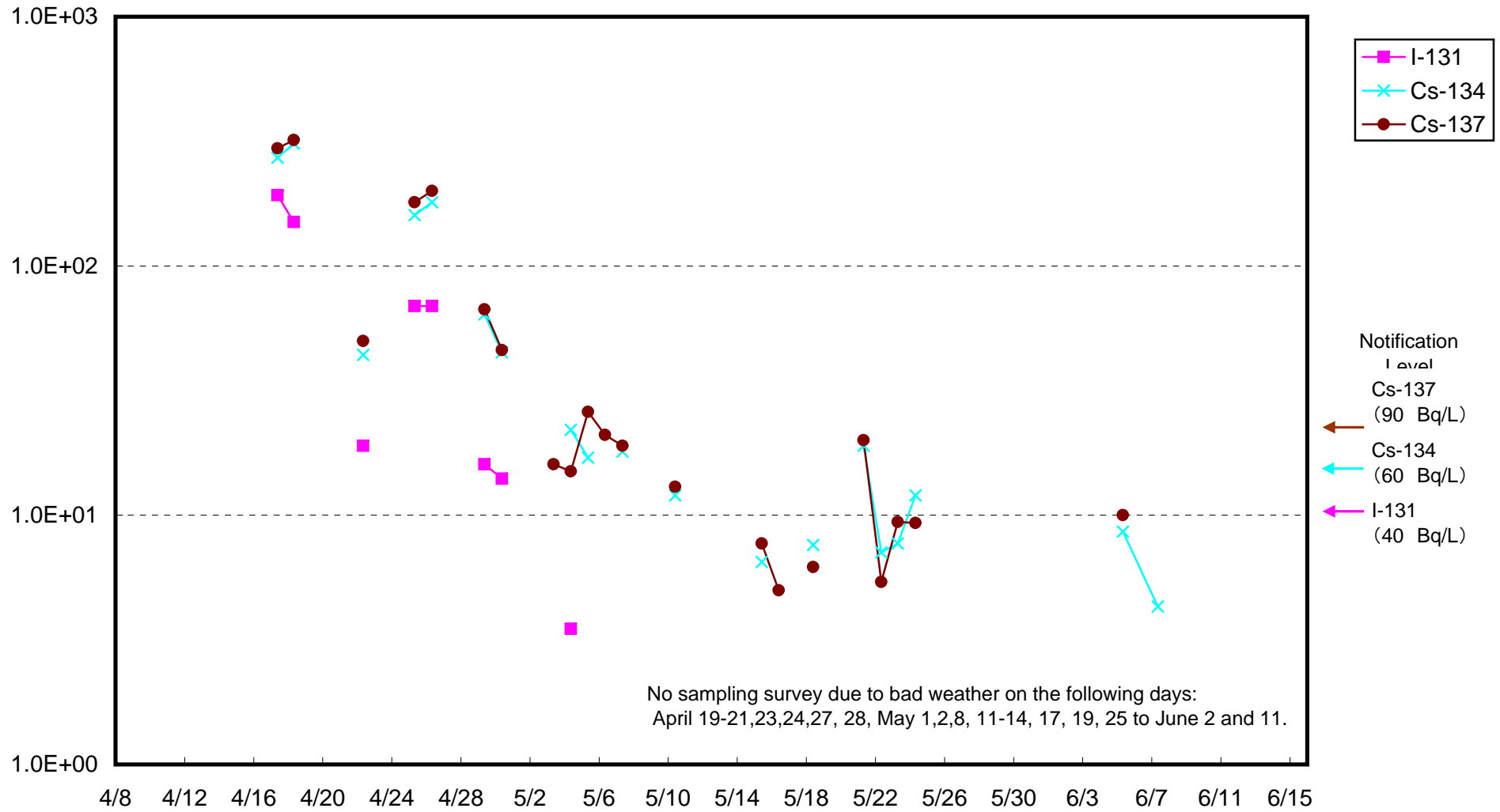
Radioactivity Density of Seawater around 8 km offshore of Odaka-ku Upper layer (Bq/L)



Radioactivity Density of Seawater around 8 km offshore of Odaka-ku Lower layer (Bq/L)



Radioactivity Density of Seawater around approx. 8 km offshore of Iwasawa Shore Upper layer (Bq/L)



Radioactivity Density of Seawater around approx. 8 km offshore of Iwasawa Shore Lower layer (Bq/L)

