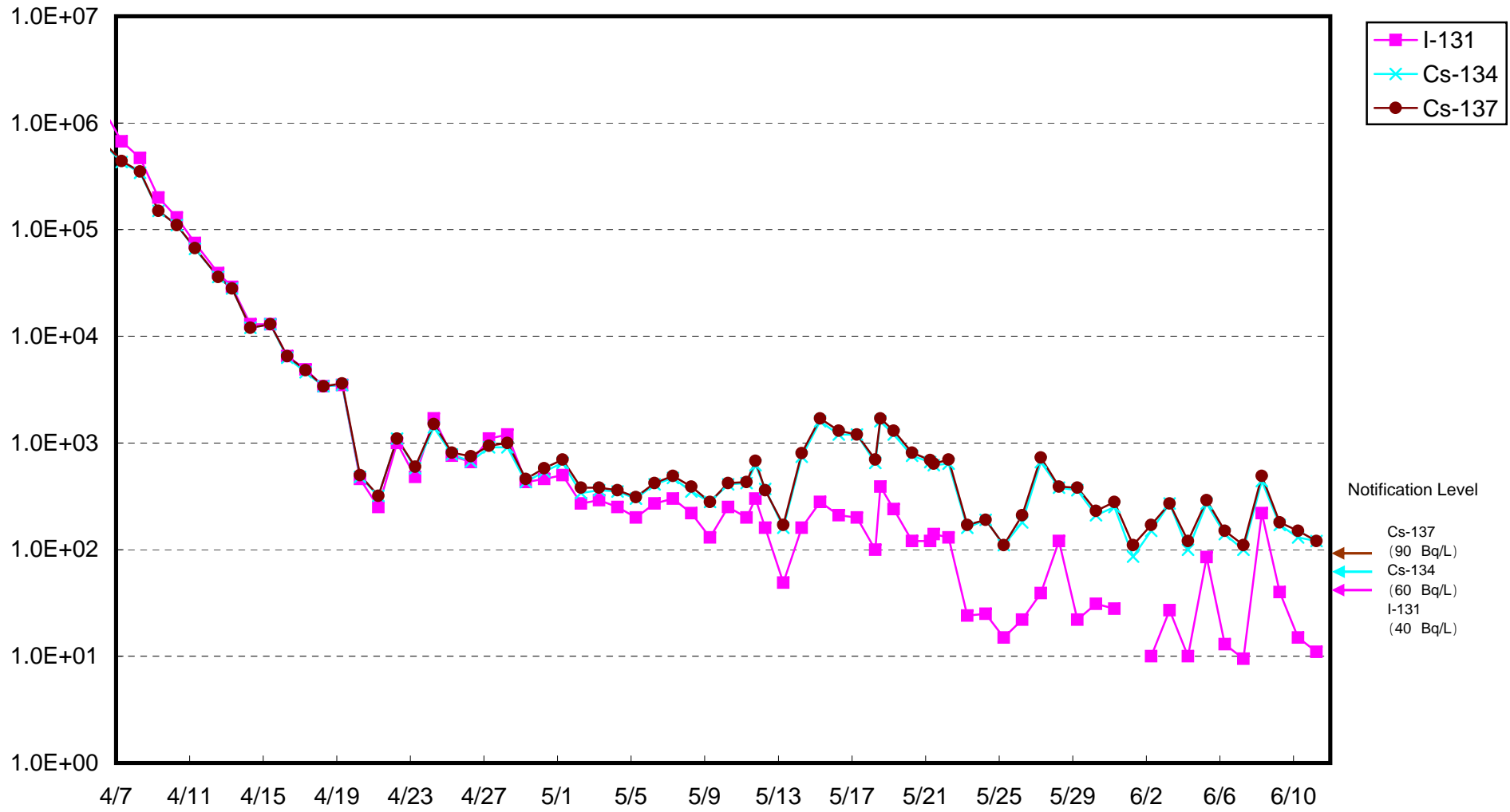
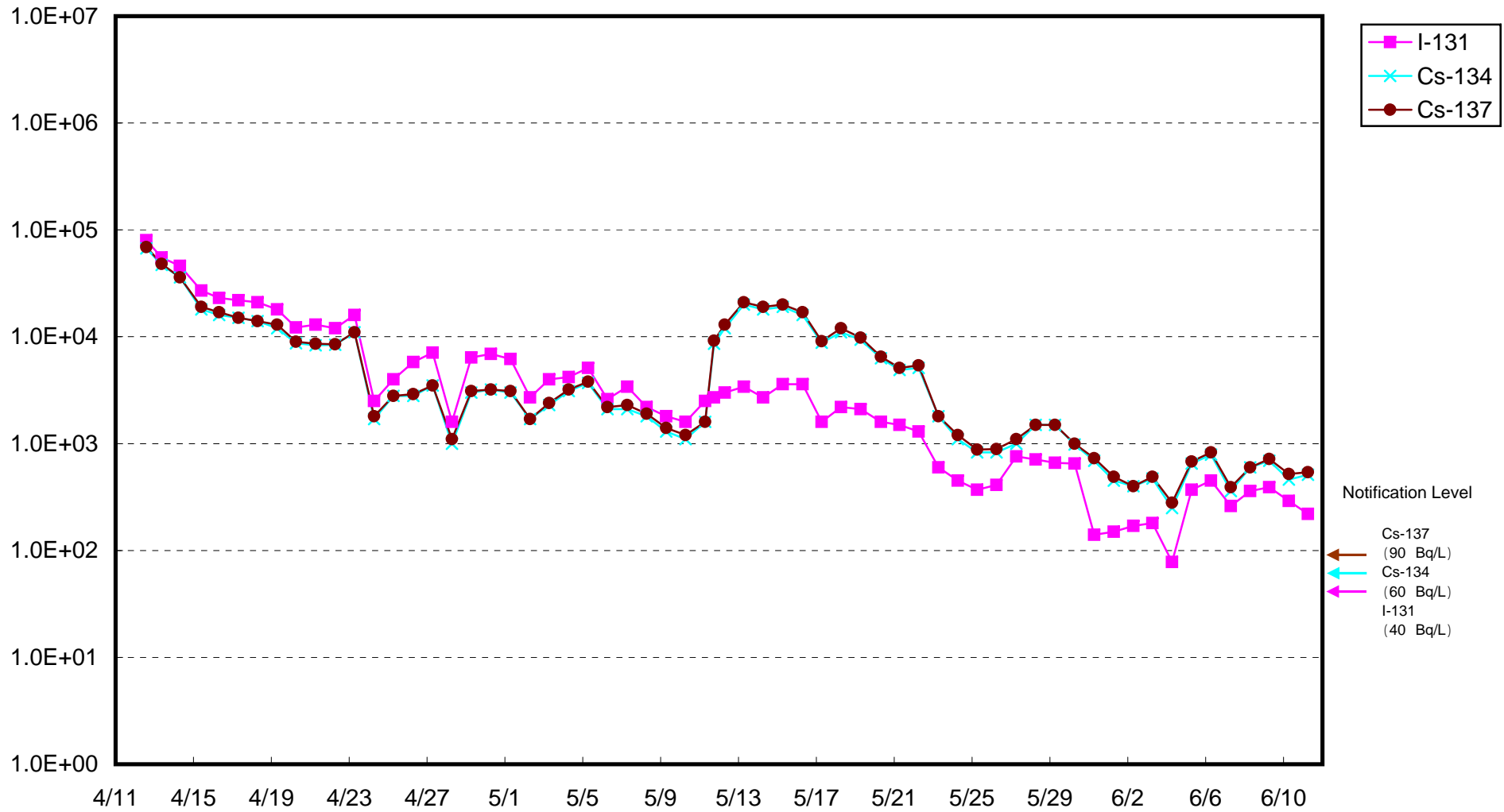


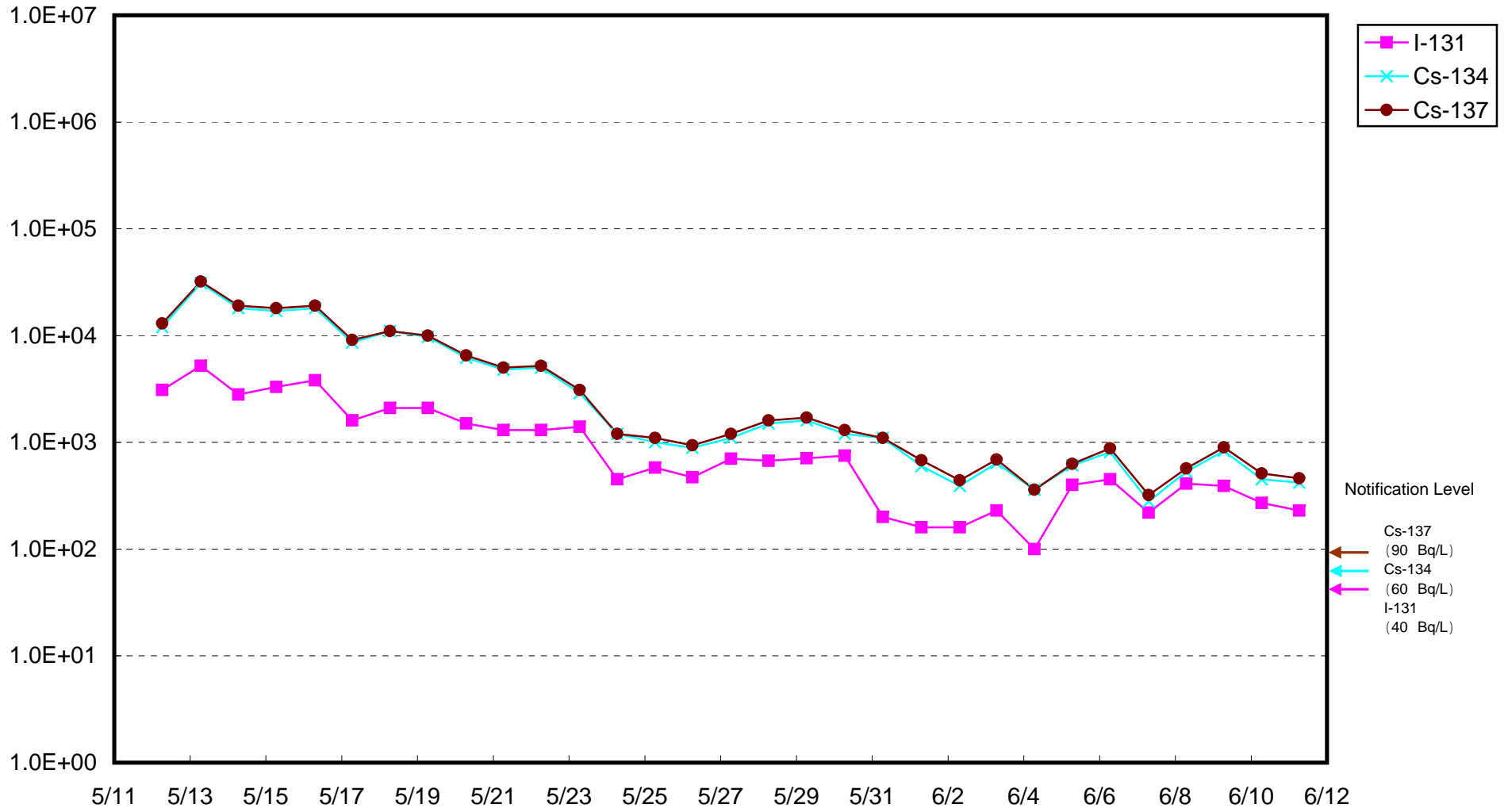
Radioactivity Density of Seawater at Shallow Draft Quay of Fukushima Daiichi NPS (Bq/ L)



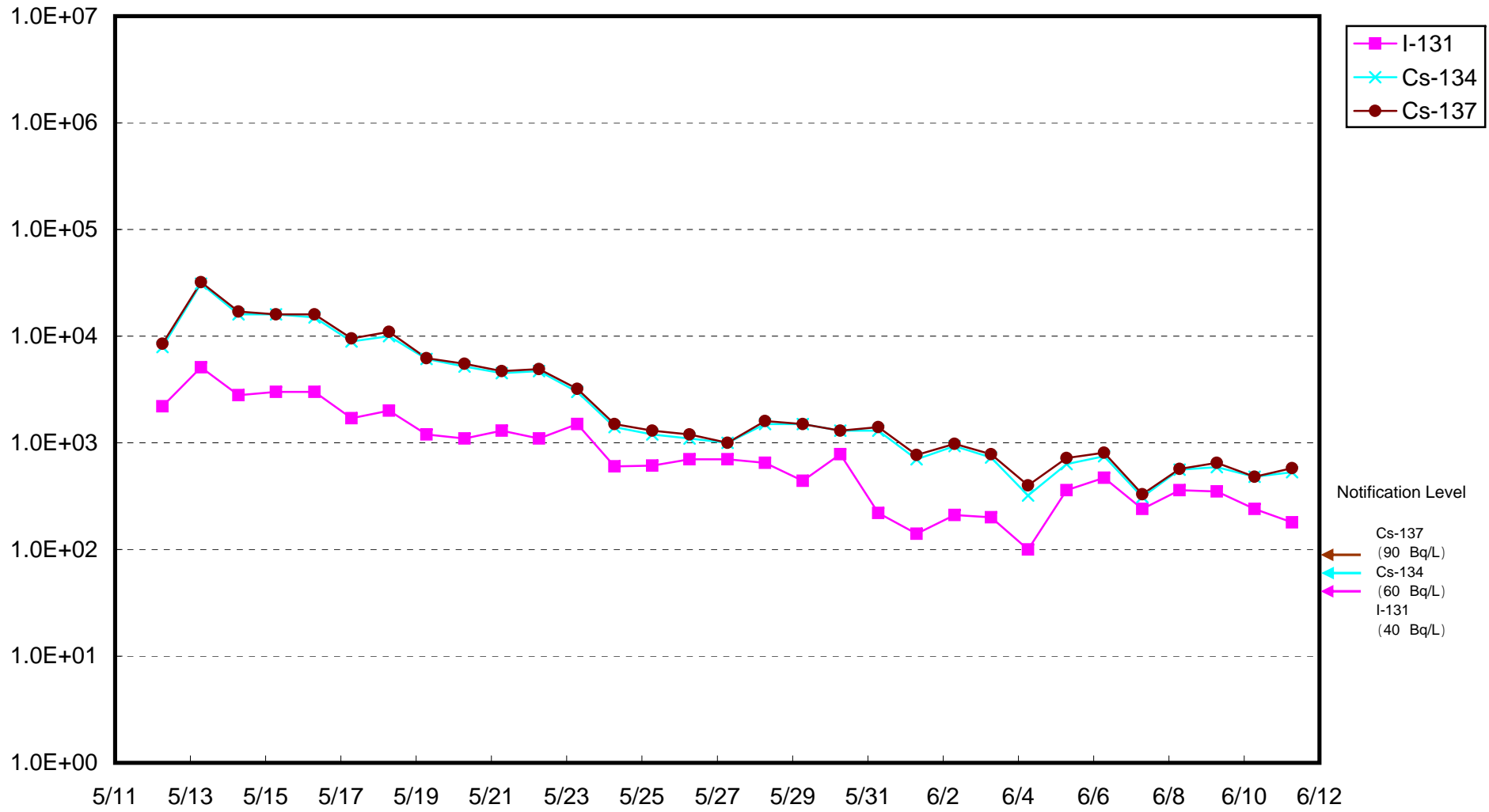
Radioactivity Density of Seawater at the north of Unit 1 to 4  
Water Intake of Fukushima Daiichi NPS (Bq/ L)



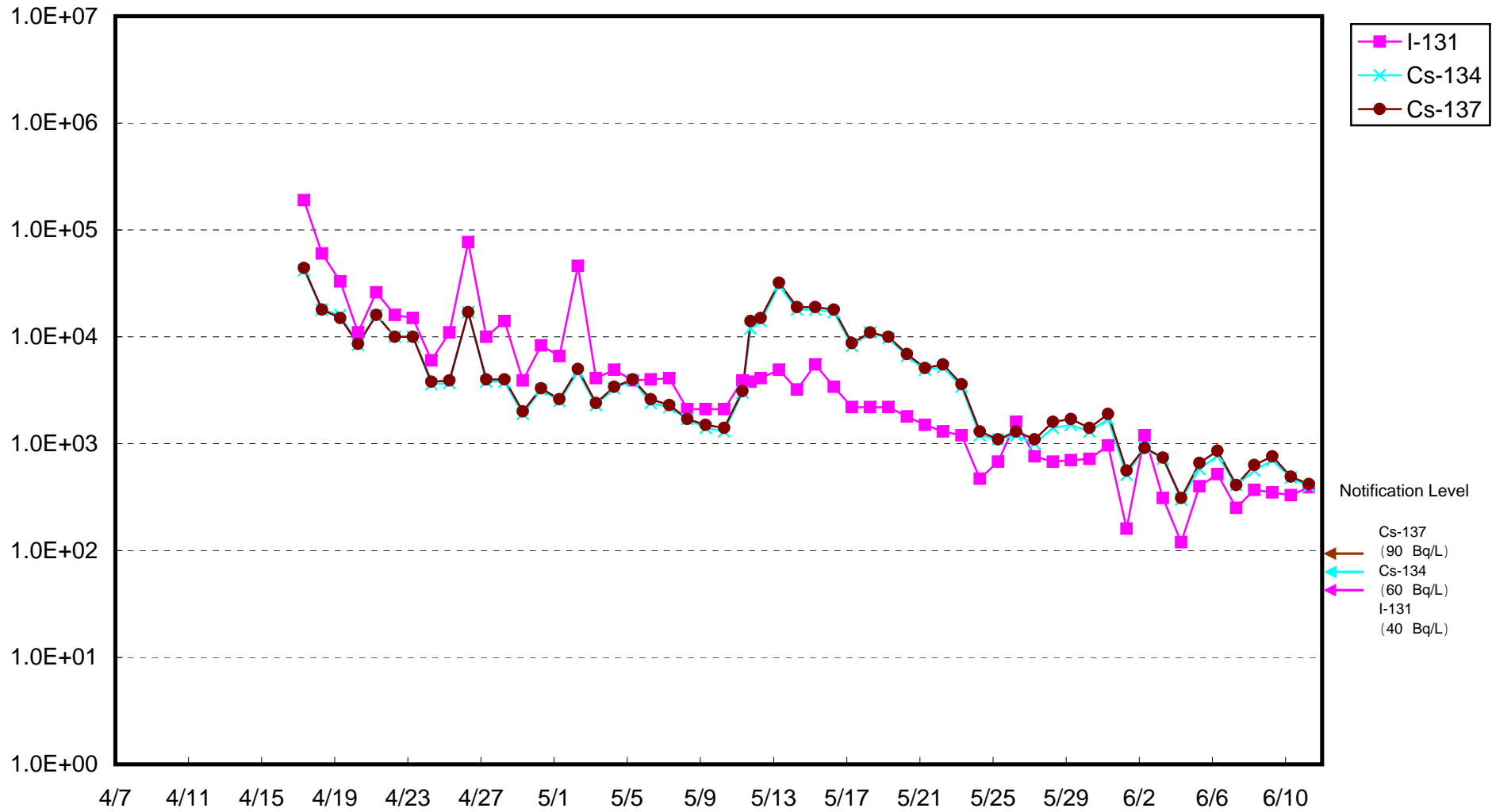
Radioactivity Density of Seawater around the Bar Screen of Unit 1  
of Fukushima Daiichi NPS (outside the Silt Fence) (Bq/ L)



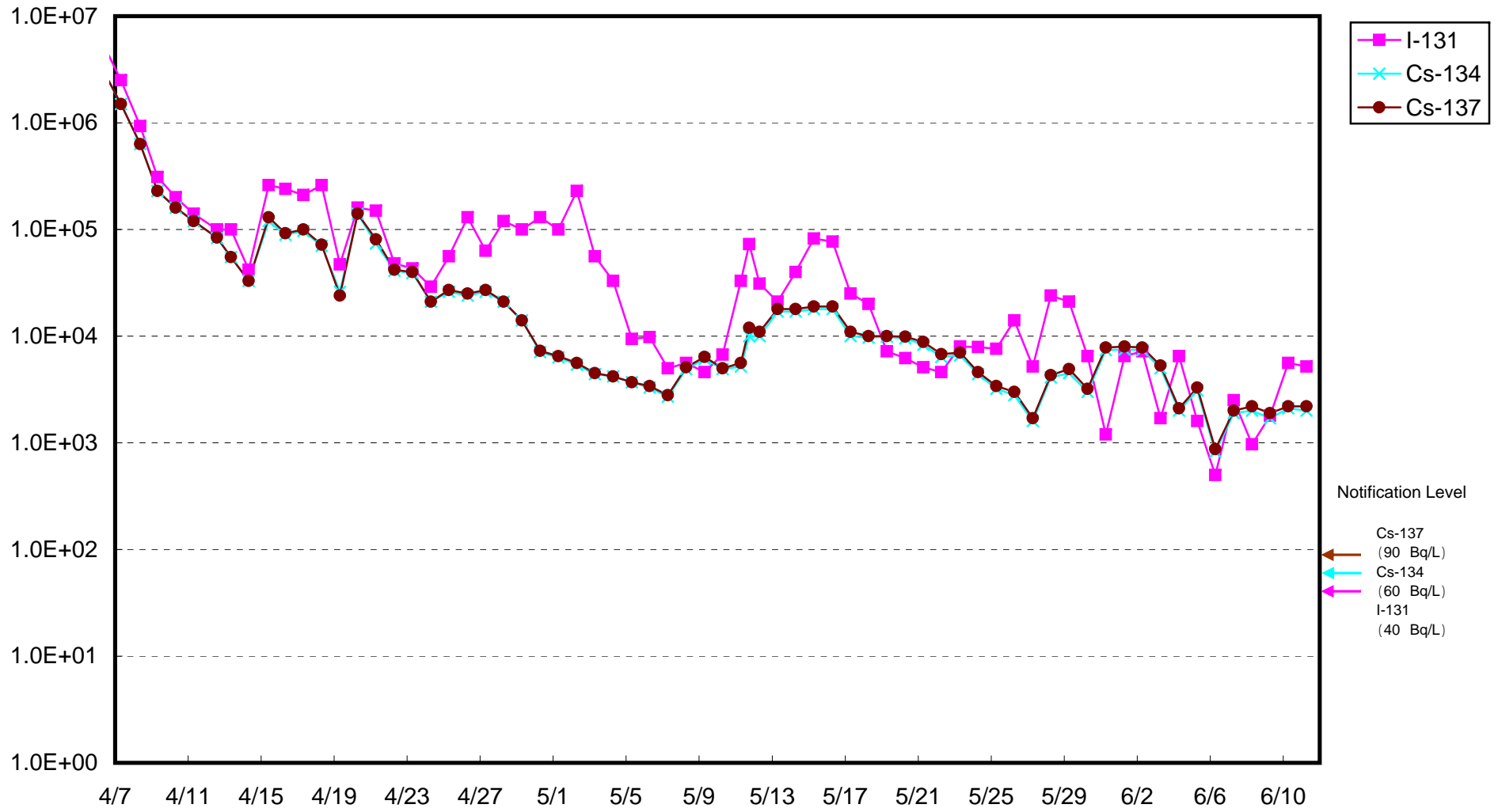
Radioactivity Density of Seawater around the Bar Screen of Unit 1  
of Fukushima Daiichi NPS (inside the Silt Fence) (Bq/ L)



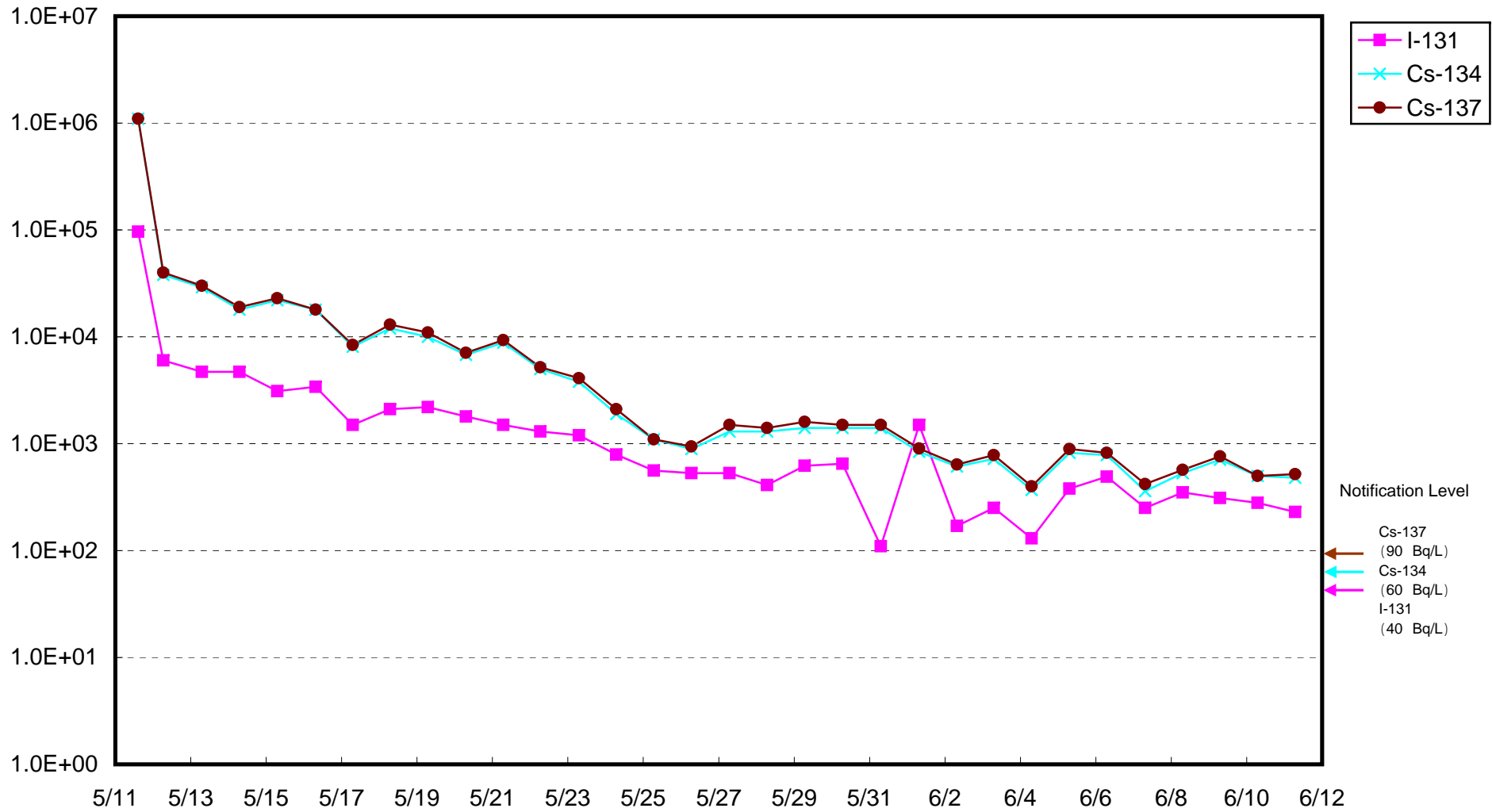
Radioactivity Density of Seawater around the Bar Screen of Unit 2  
of Fukushima Daiichi NPS (outside the Silt Fence) (Bq/ L)



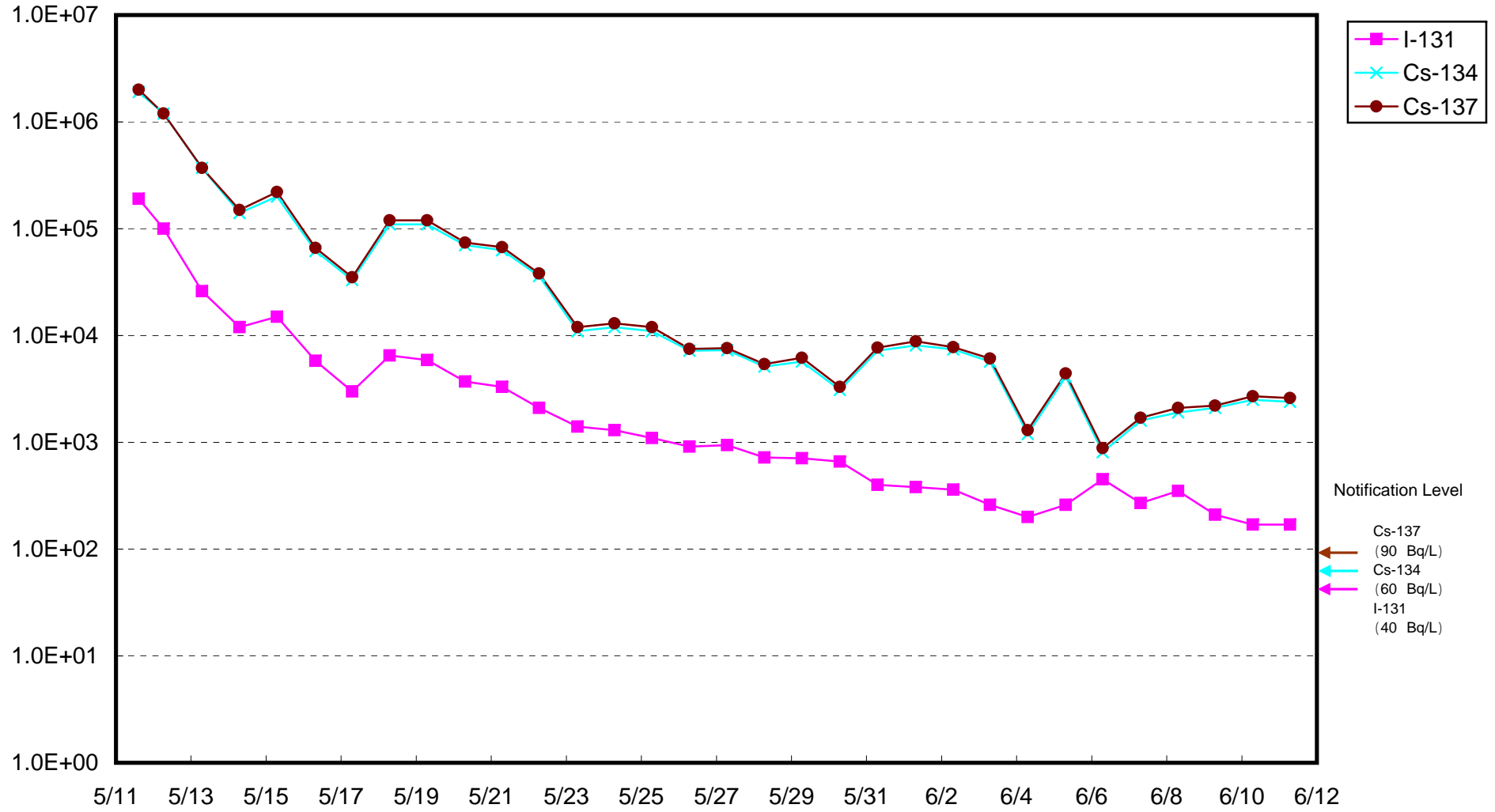
Radioactivity Density of Seawater around the Bar Screen of Unit 2  
of Fukushima Daiichi NPS (inside the Silt Fence) (Bq/ L)



Radioactivity Density of Seawater around the Bar Screen of Unit 3  
of Fukushima Daiichi NPS (outside the Silt Fence) (Bq/L)

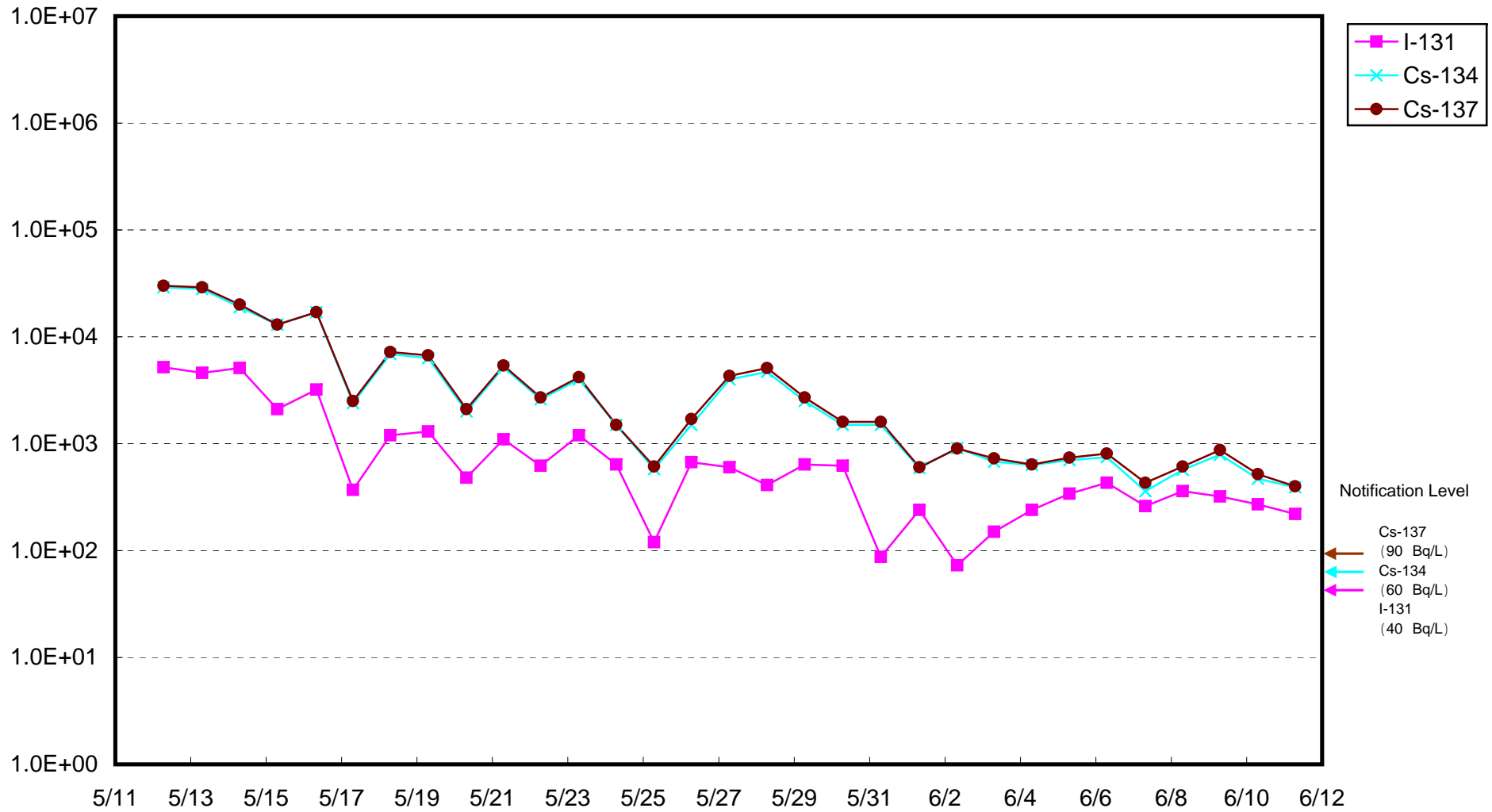


Radioactivity Density of Seawater around the Bar Screen of Unit 3  
of Fukushima Daiichi NPS (inside the Silt Fence) (Bq/ L)

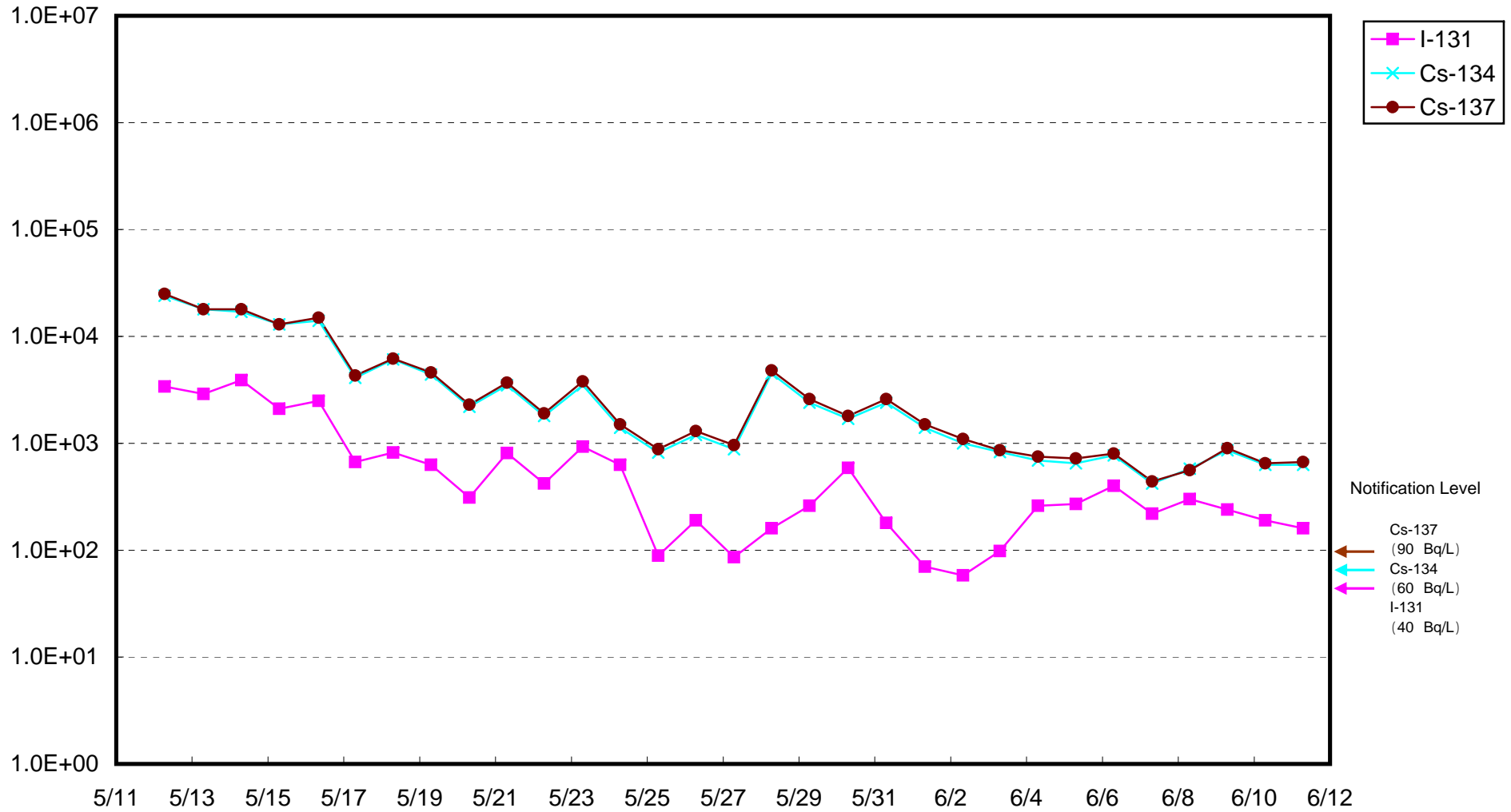




Radioactivity Density of Seawater around the Bar Screen of Unit 4  
of Fukushima Daiichi NPS (outside the Silt Fence) (Bq/ L)



Radioactivity Density of Seawater around the Bar Screen of Unit 4  
of Fukushima Daiichi NPS (inside the Silt Fence) (Bq/ L)



Radioactivity Density of Seawater at the South of Units 1-4 Water Intake  
of Fukushima Daiichi NPS (Bq/ L)

