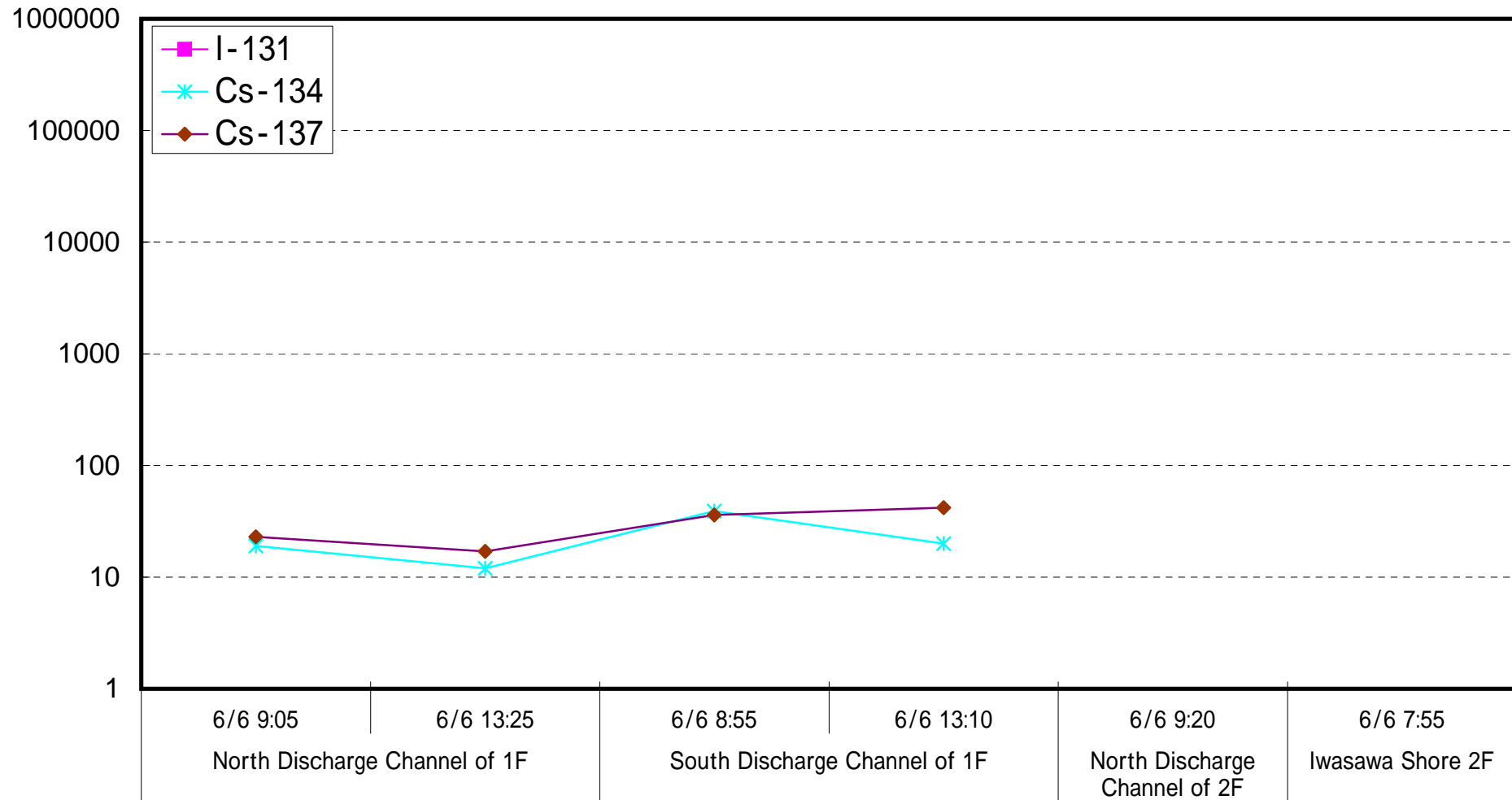
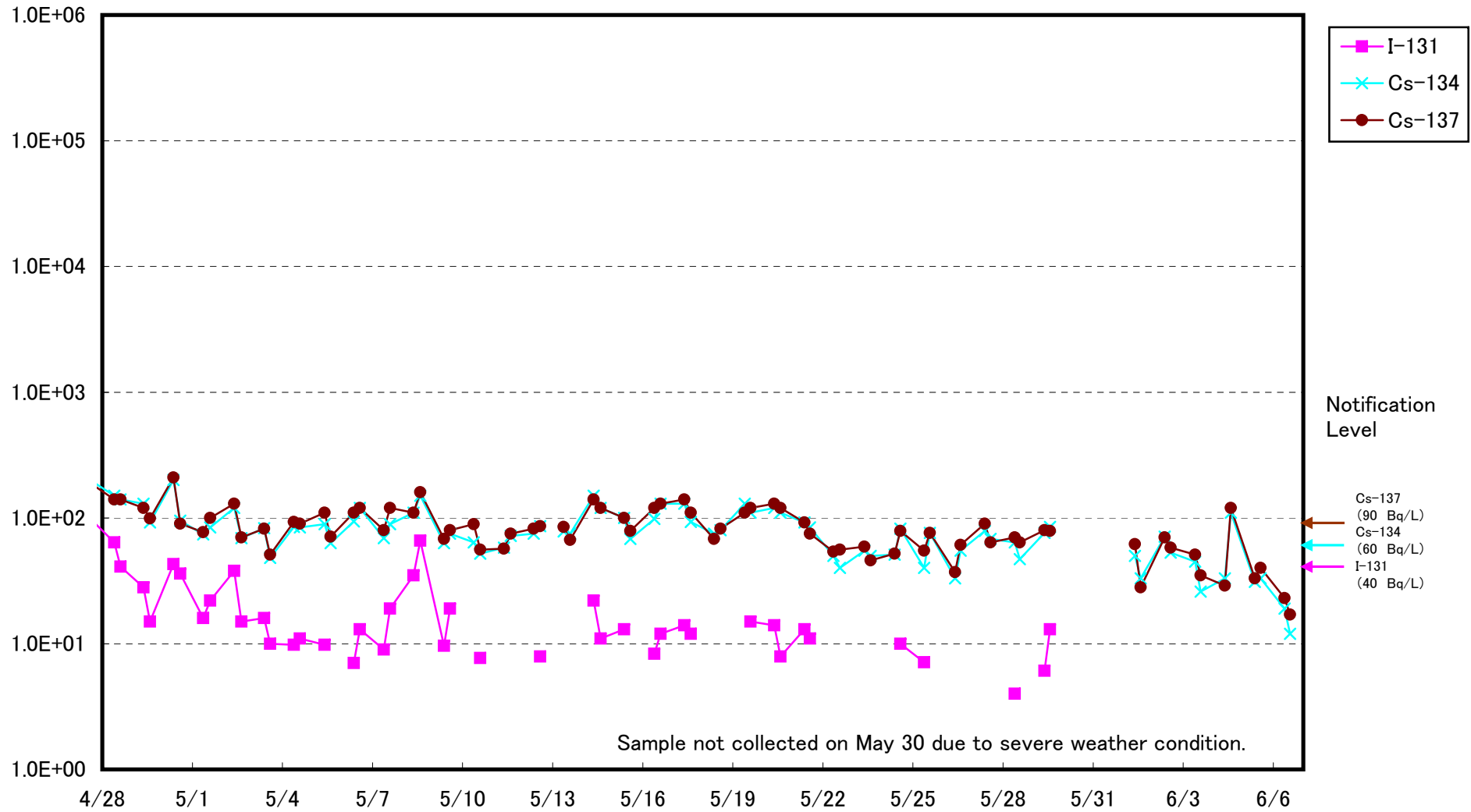


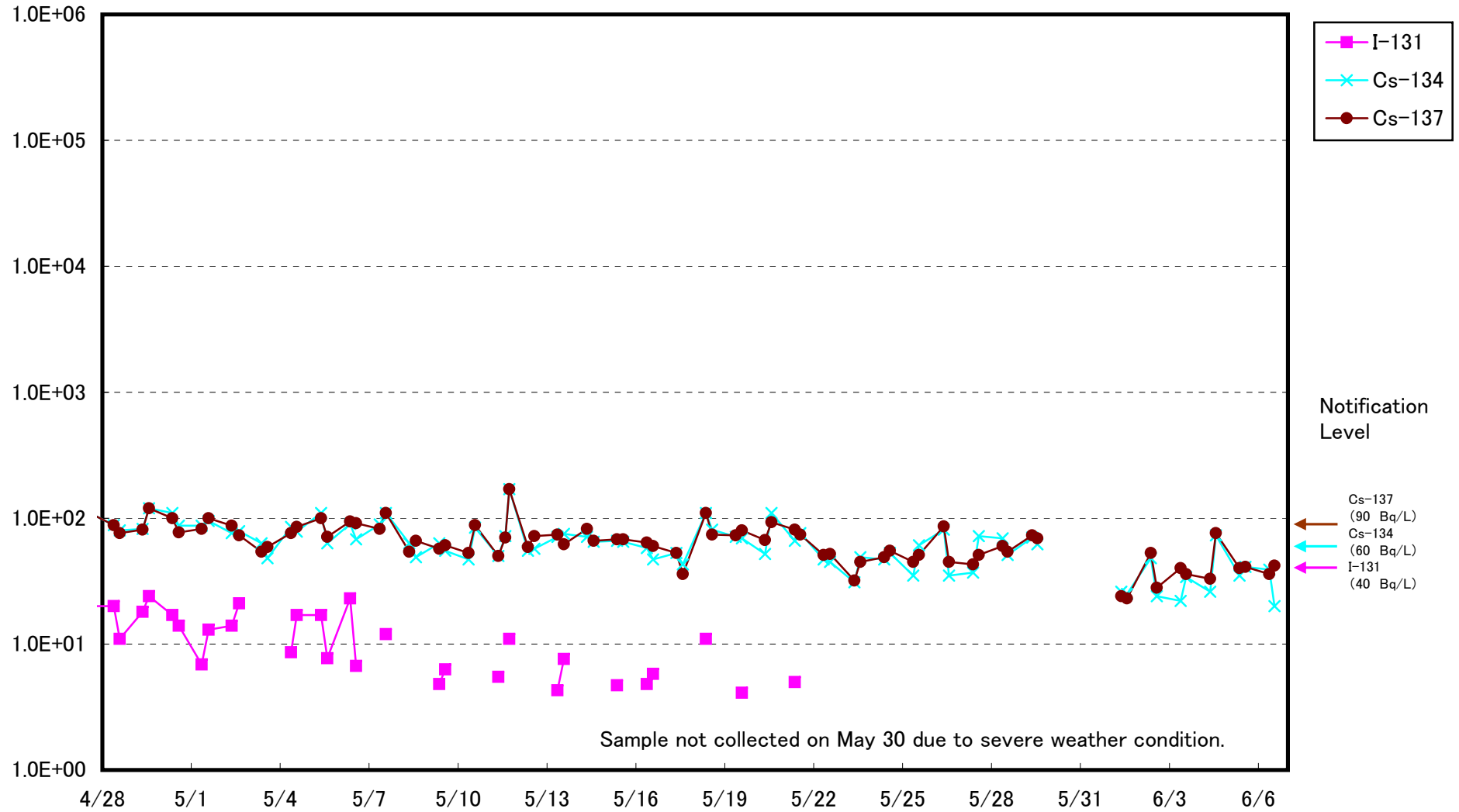
# Radioactive Density of Seawater (Bq/L)



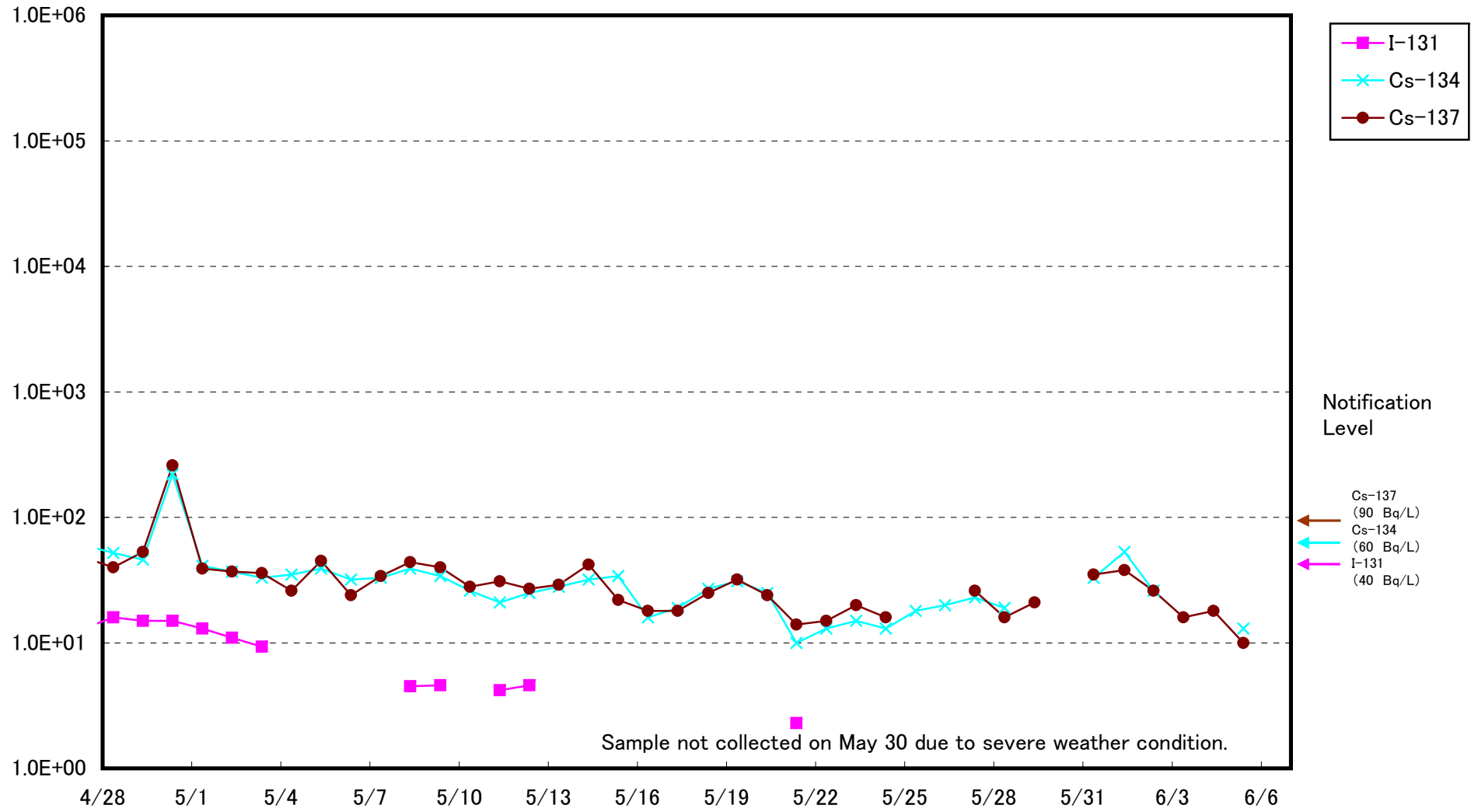
Radioactivity Density of Seawater at North of 1F5-6 Discharge Channel  
 (approx.30m north of 5-6 discharge channel) (Bq/L)



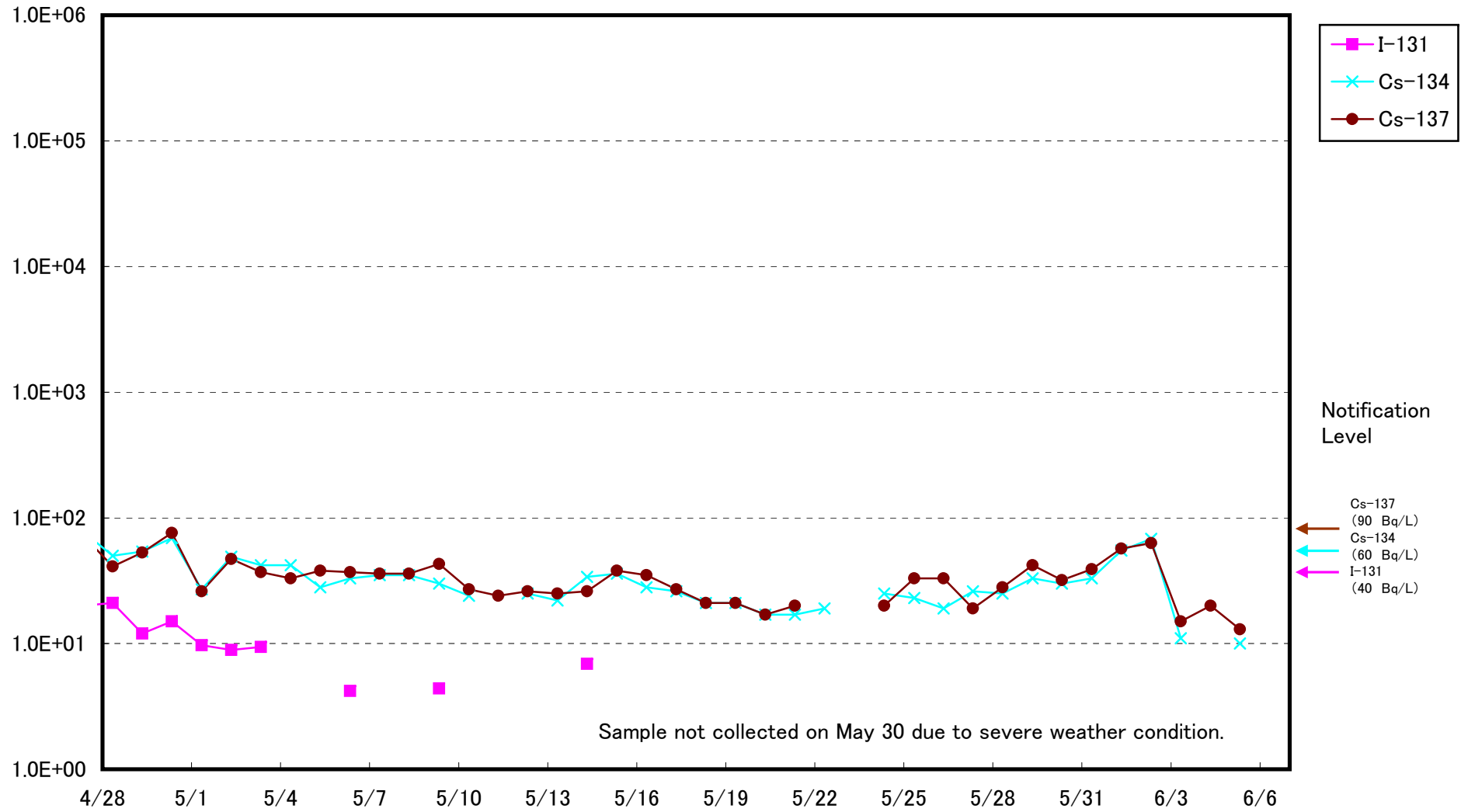
Radioactivity Density of Seawater at South Discharge Channel of 1F (Bq/L)



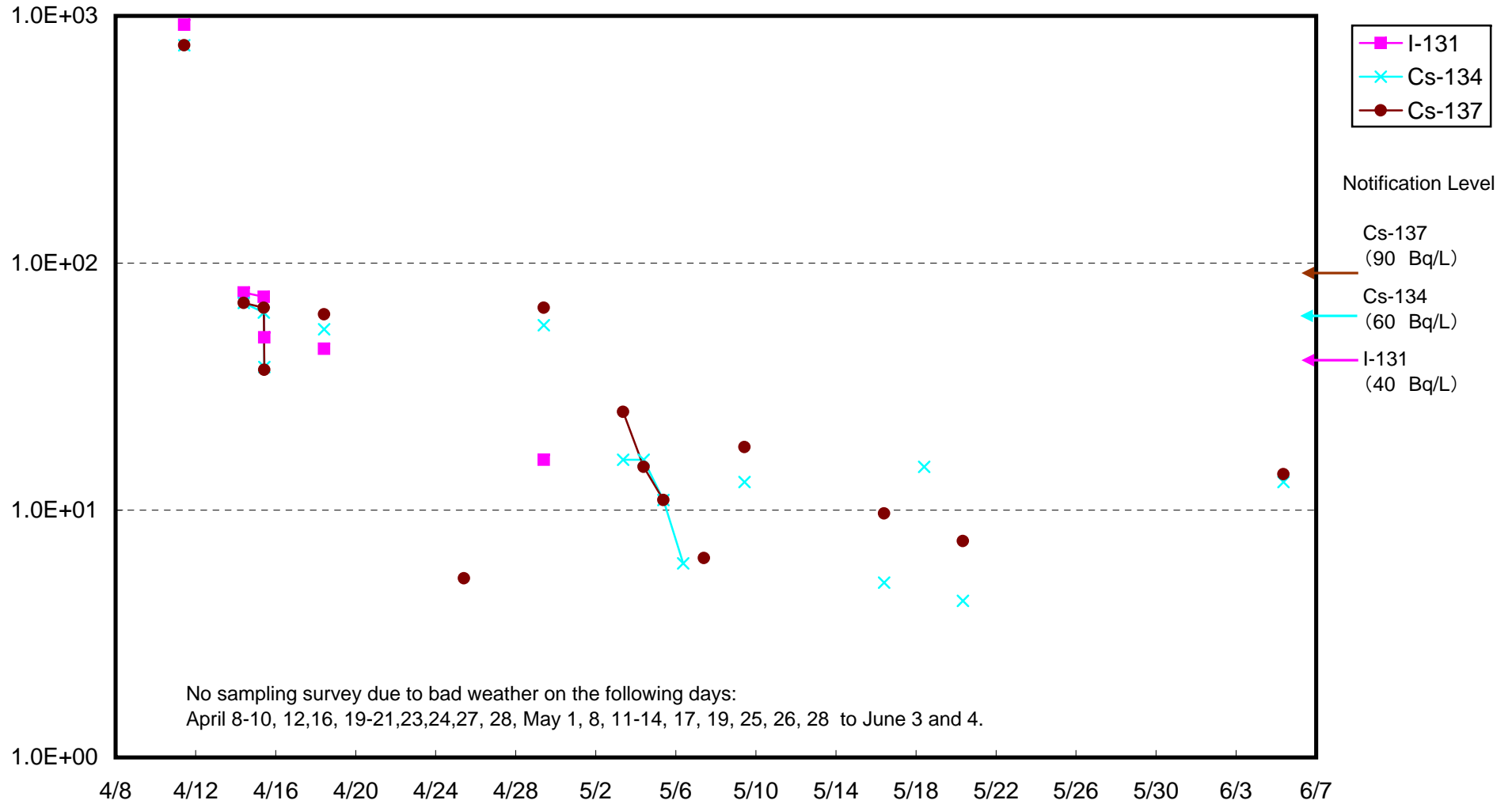
Radioactivity Density of Seawater at North Discharge Channel of 2F (Bq/L)



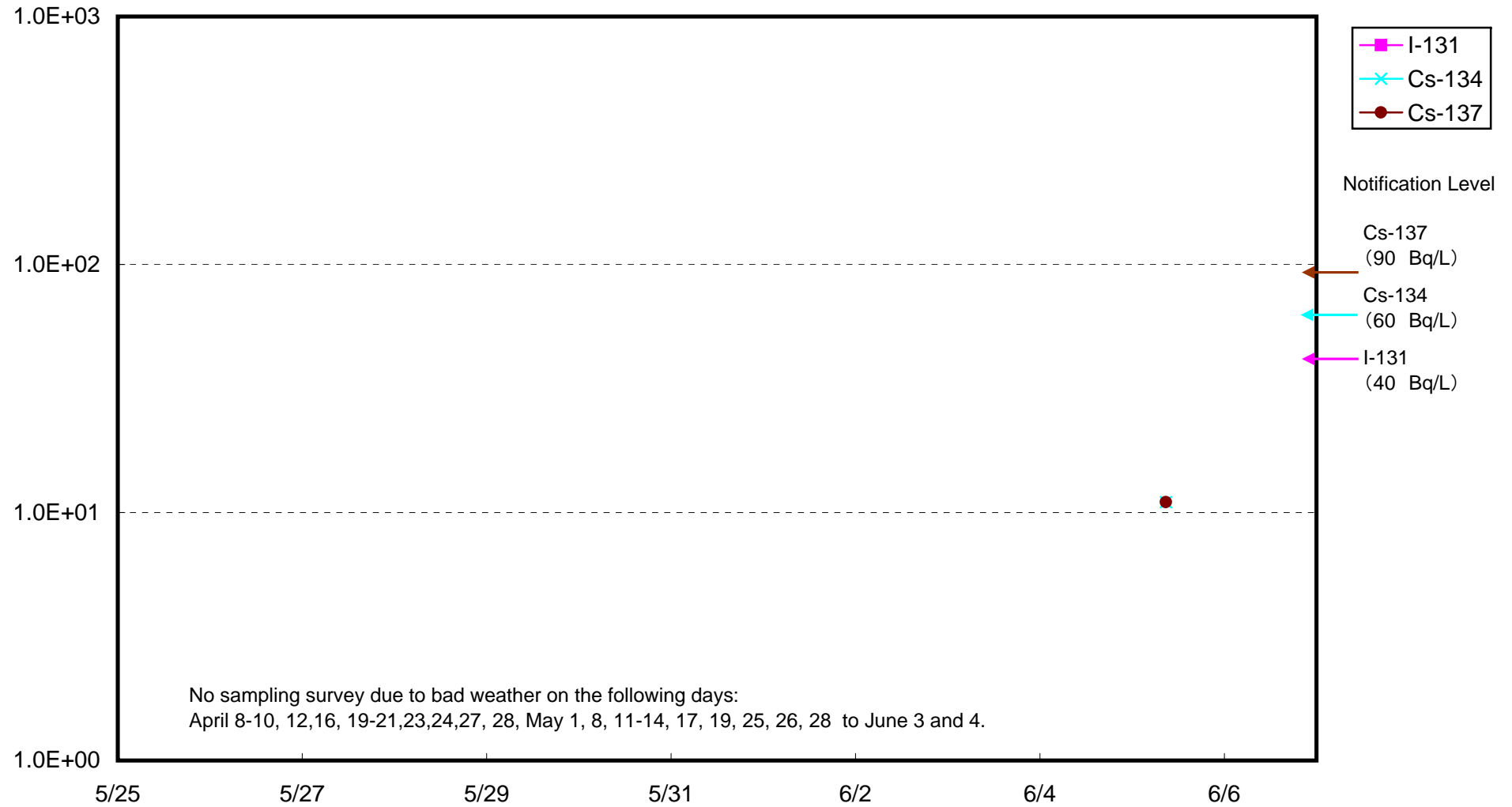
Radioactivity Density of Seawater at Iwasawa Shore 2F (Bq/L)



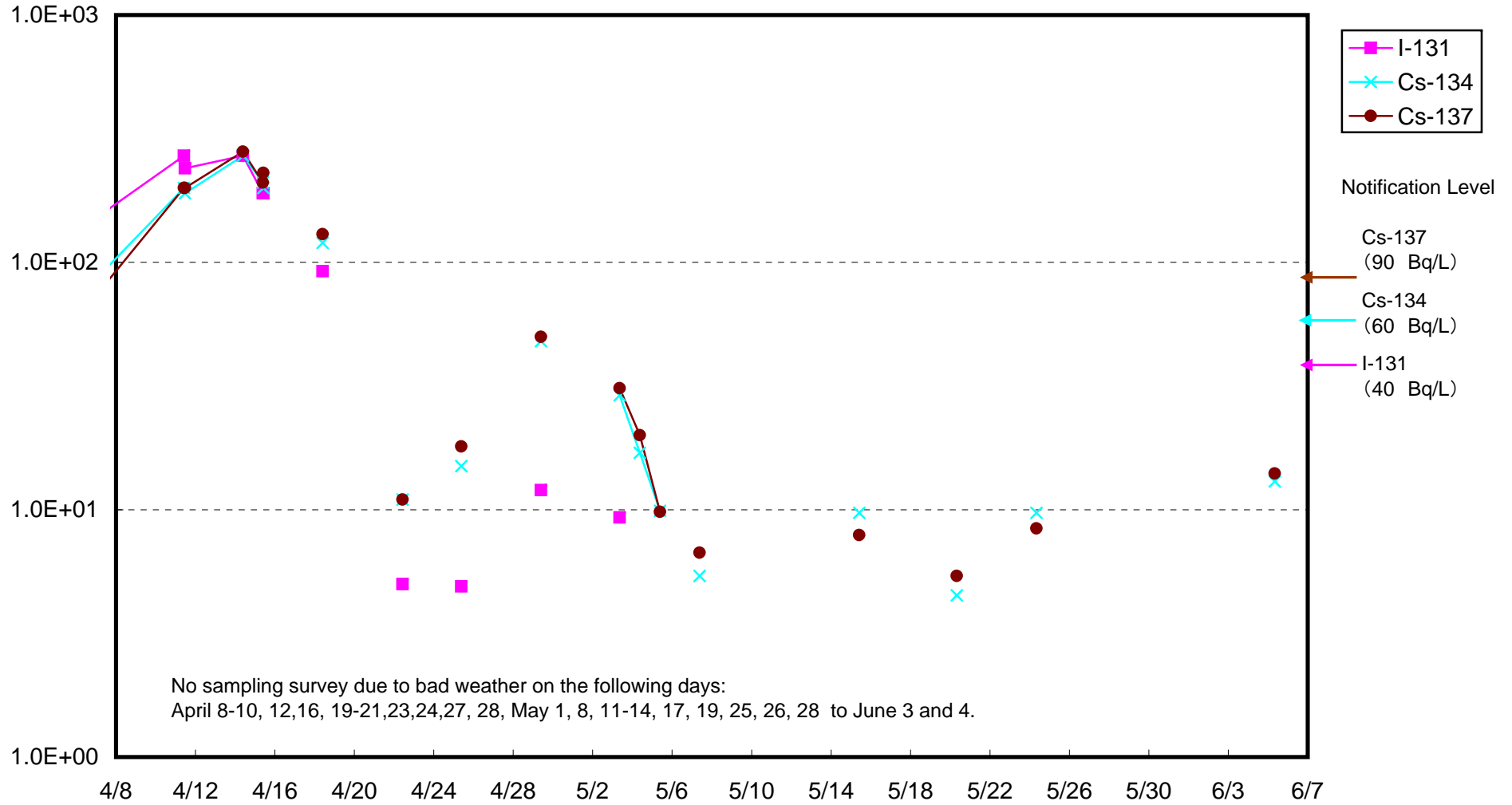
Radioactivity Density of Seawater around approx. 15 km offshore of Minamisouma City Upper layer (Bq/L)



Radioactivity Density of Seawater around approx. 15 km offshore of Minamisouma City lower layer (Bq/L)

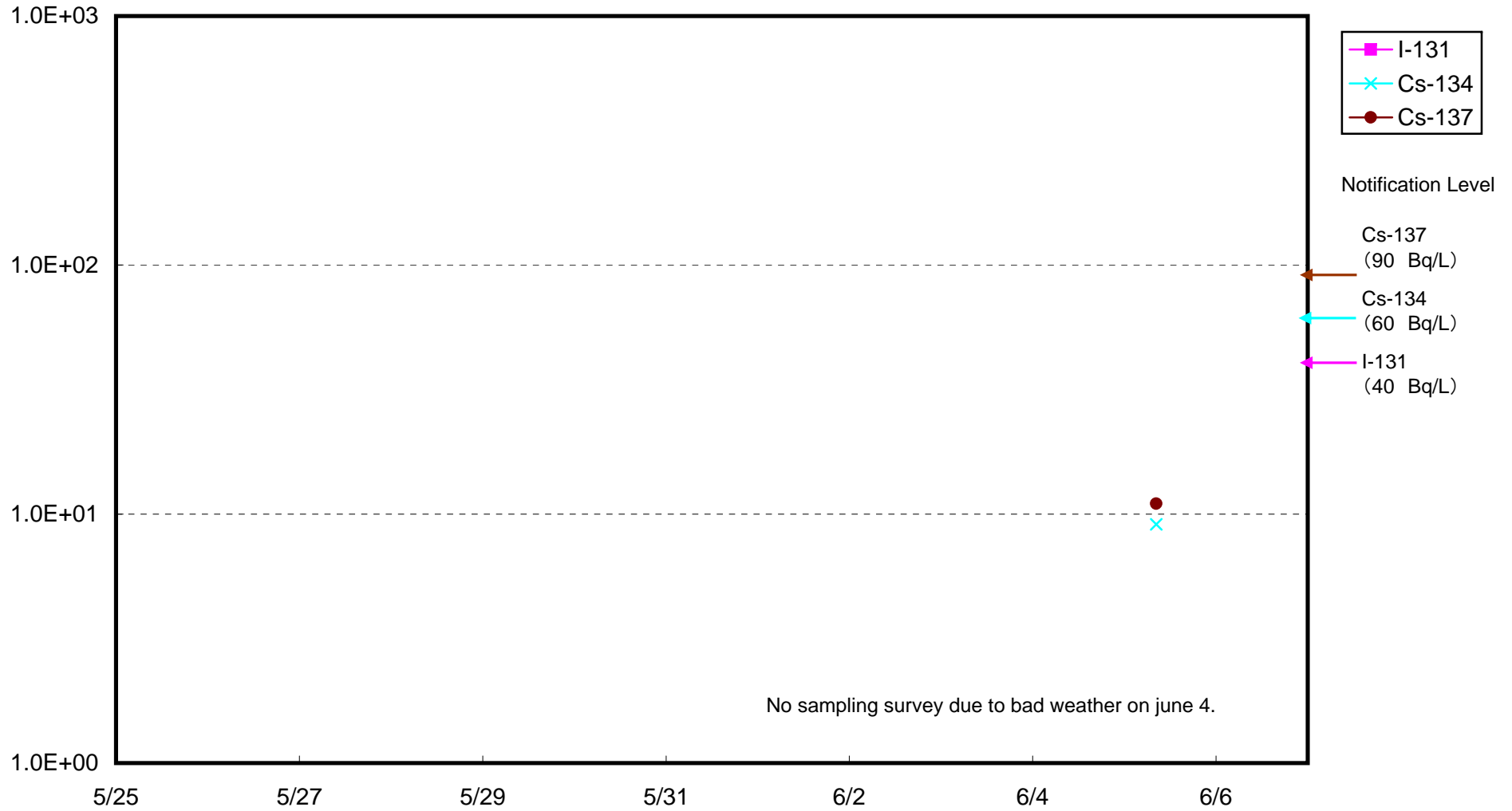


Radioactivity Density of Seawater around approx. 15 km offshore of Ukedo-gawa upper layer (Bq/L)

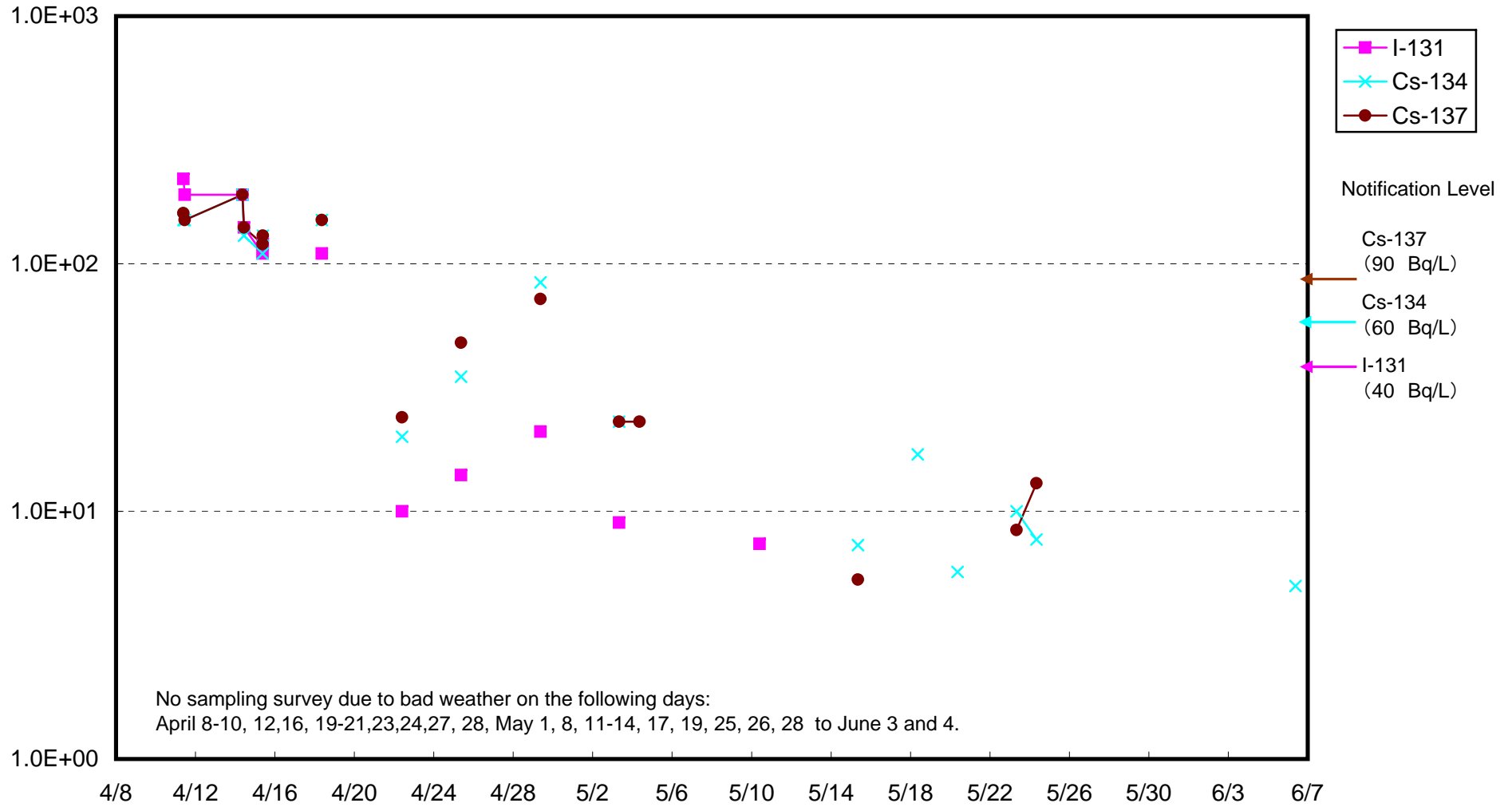




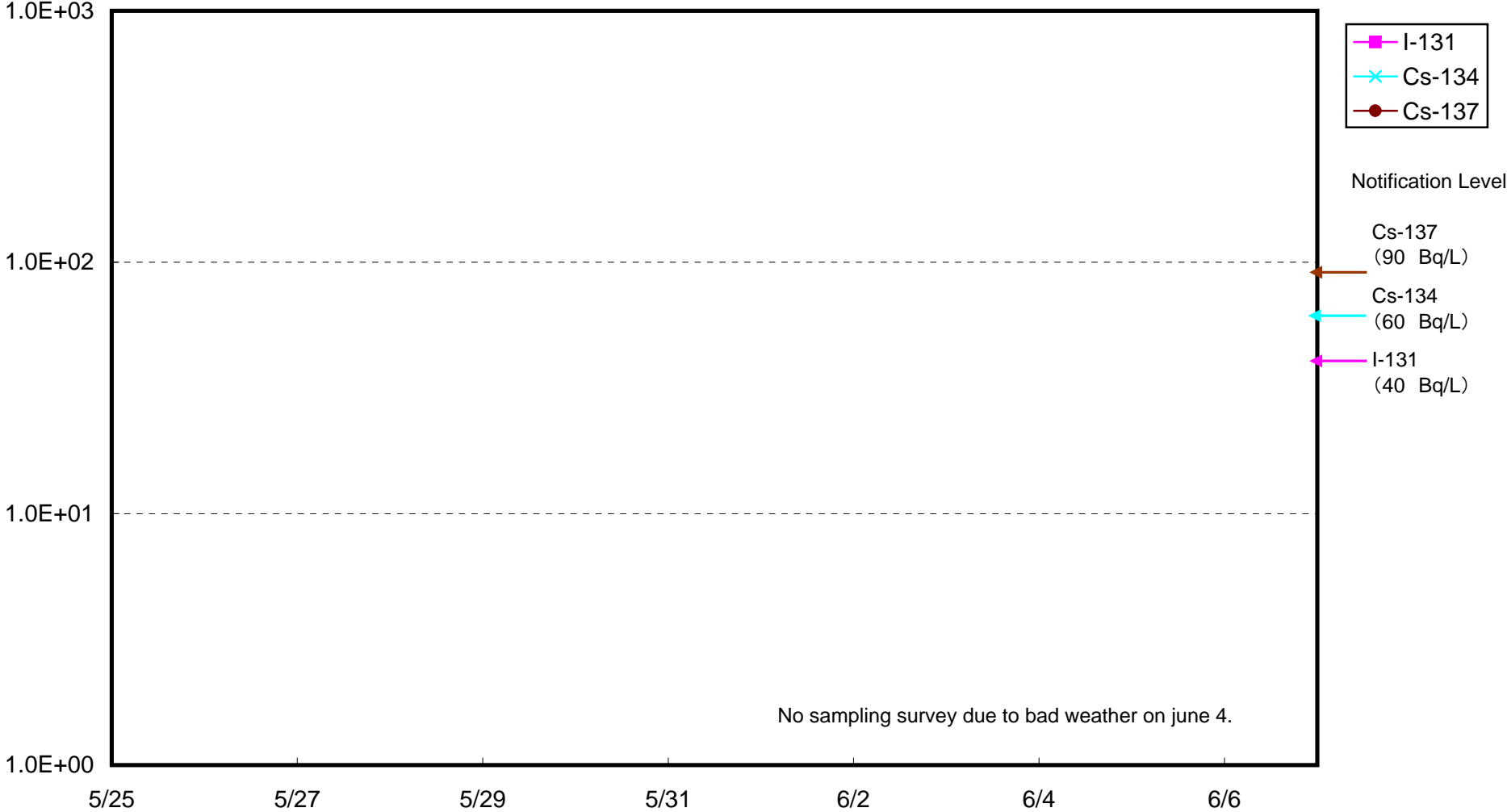
Radioactivity Density of Seawater around approx. 15 km offshore of Ukedo-gawa lower layer (Bq/L)



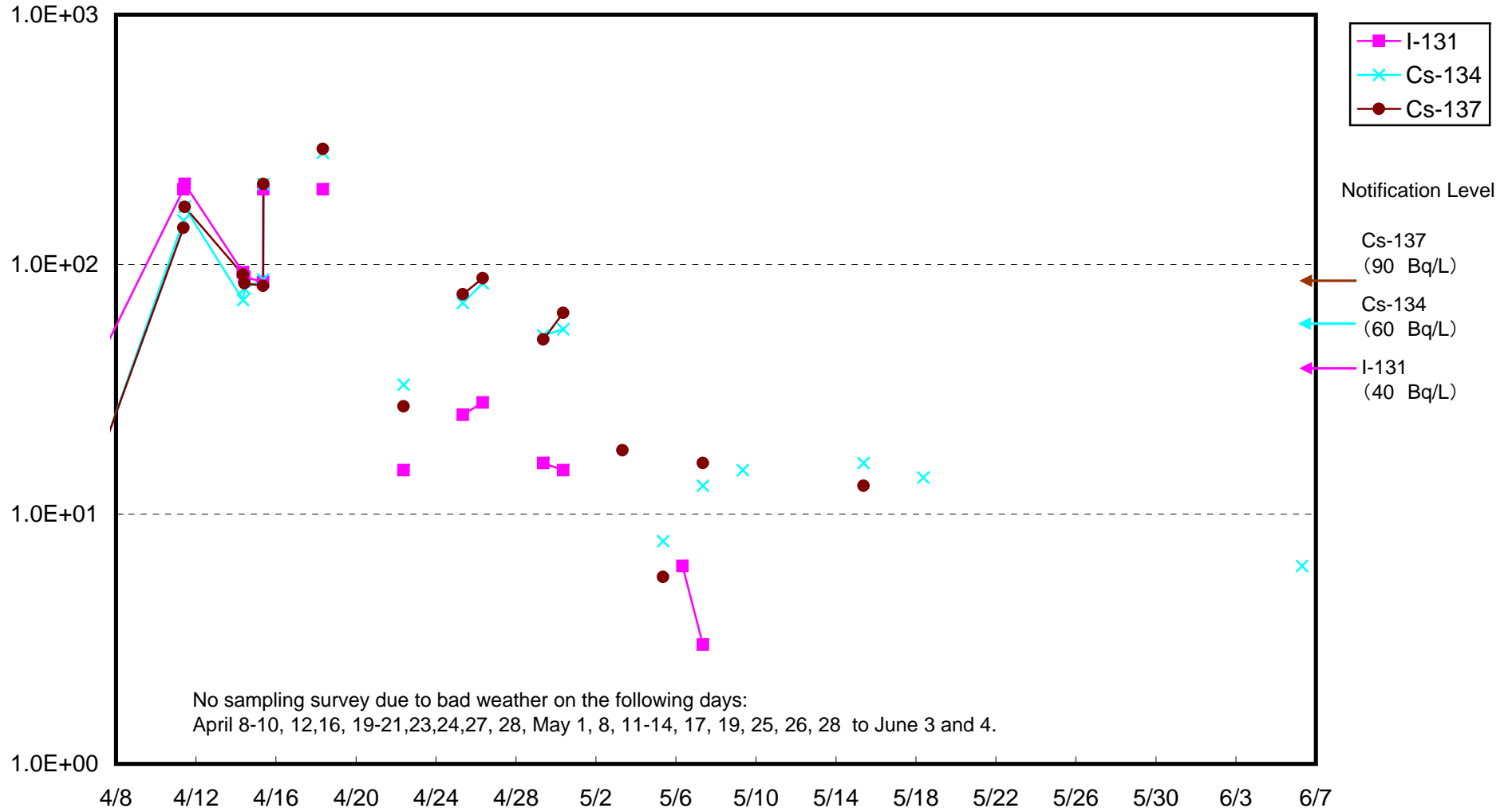
Radioactivity Density of Seawater around approx. 15 km offshore of Fukushima Daiichi upper layer (Bq/L)



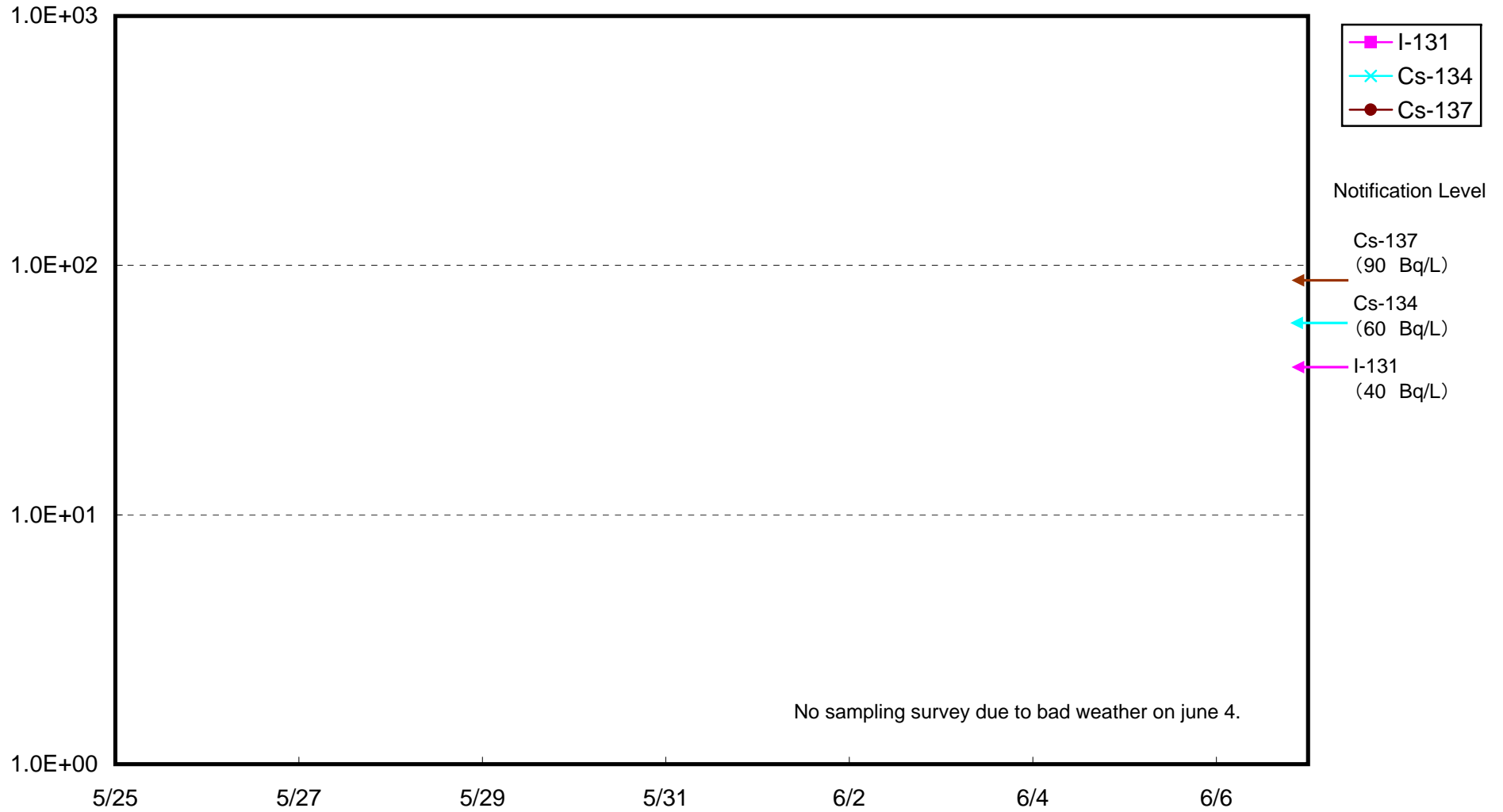
Radioactivity Density of Seawater around approx. 15 km offshore of Fukushima Daiichi lower layer (Bq/L)



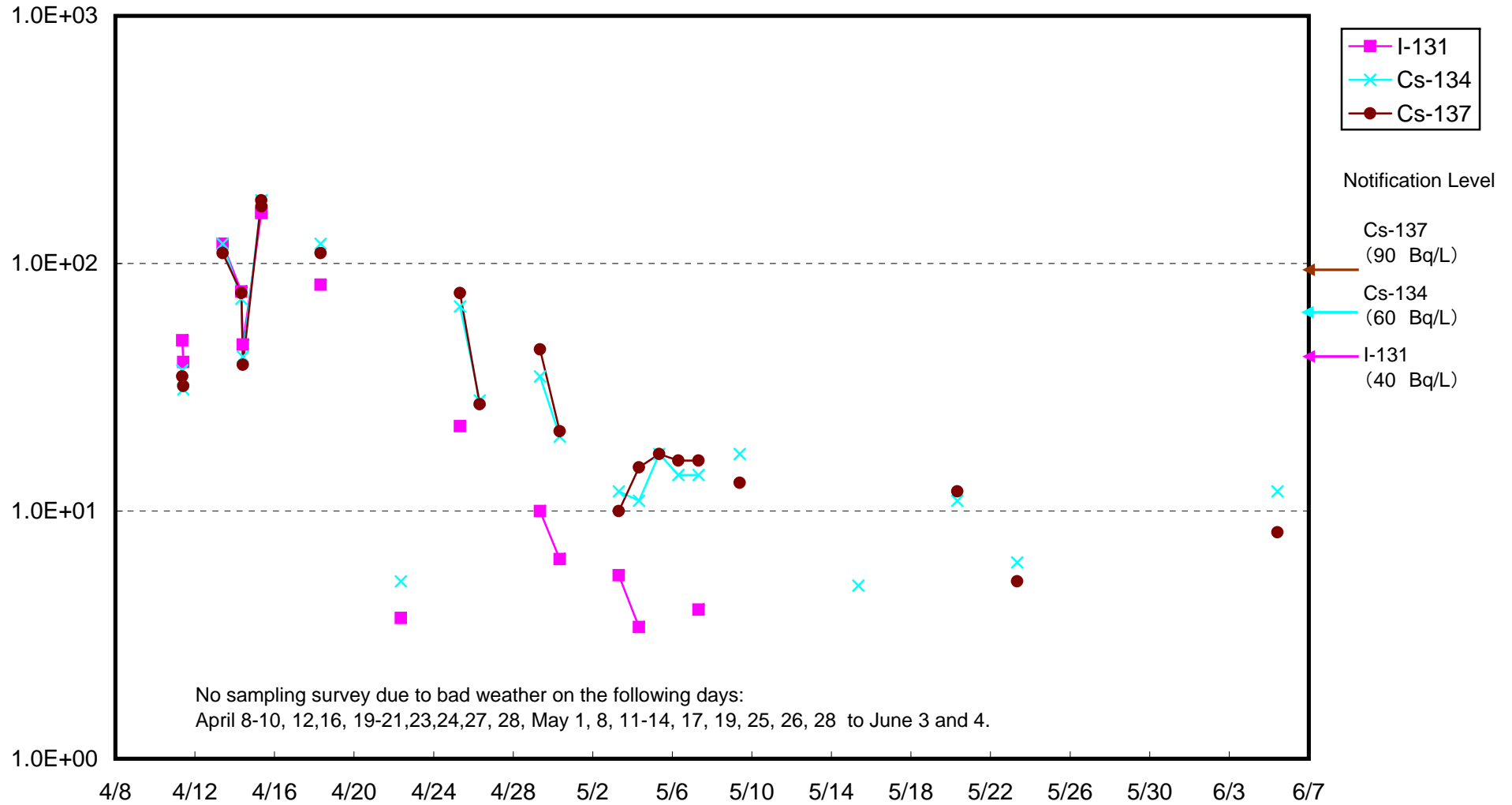
Radioactivity Density of Seawater around approx. 15 km offshore of Fukushima Daini upper layer (Bq/L)



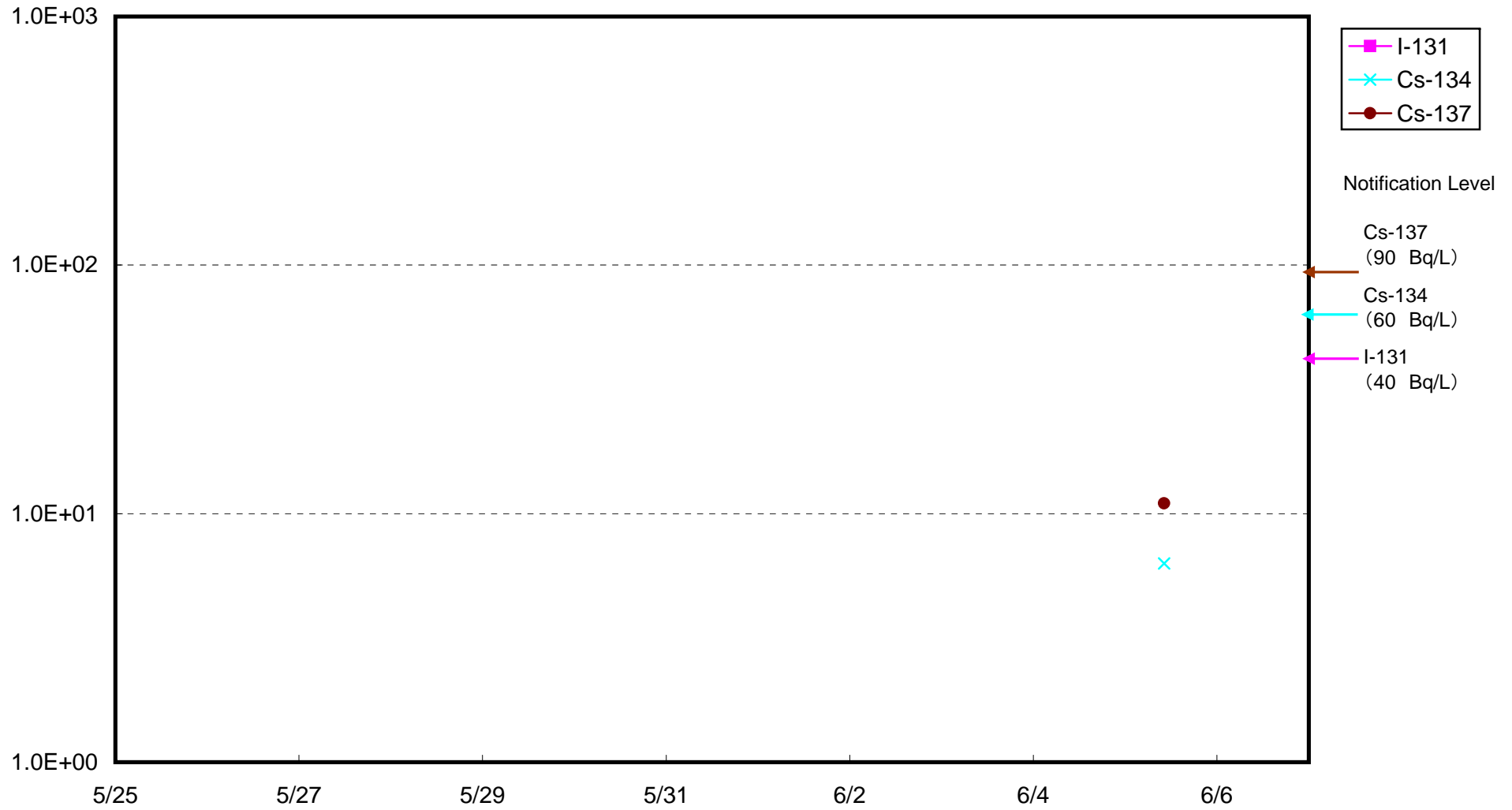
Radioactivity Density of Seawater around approx. 15 km offshore of Fukushima Daini lower layer (Bq/L)



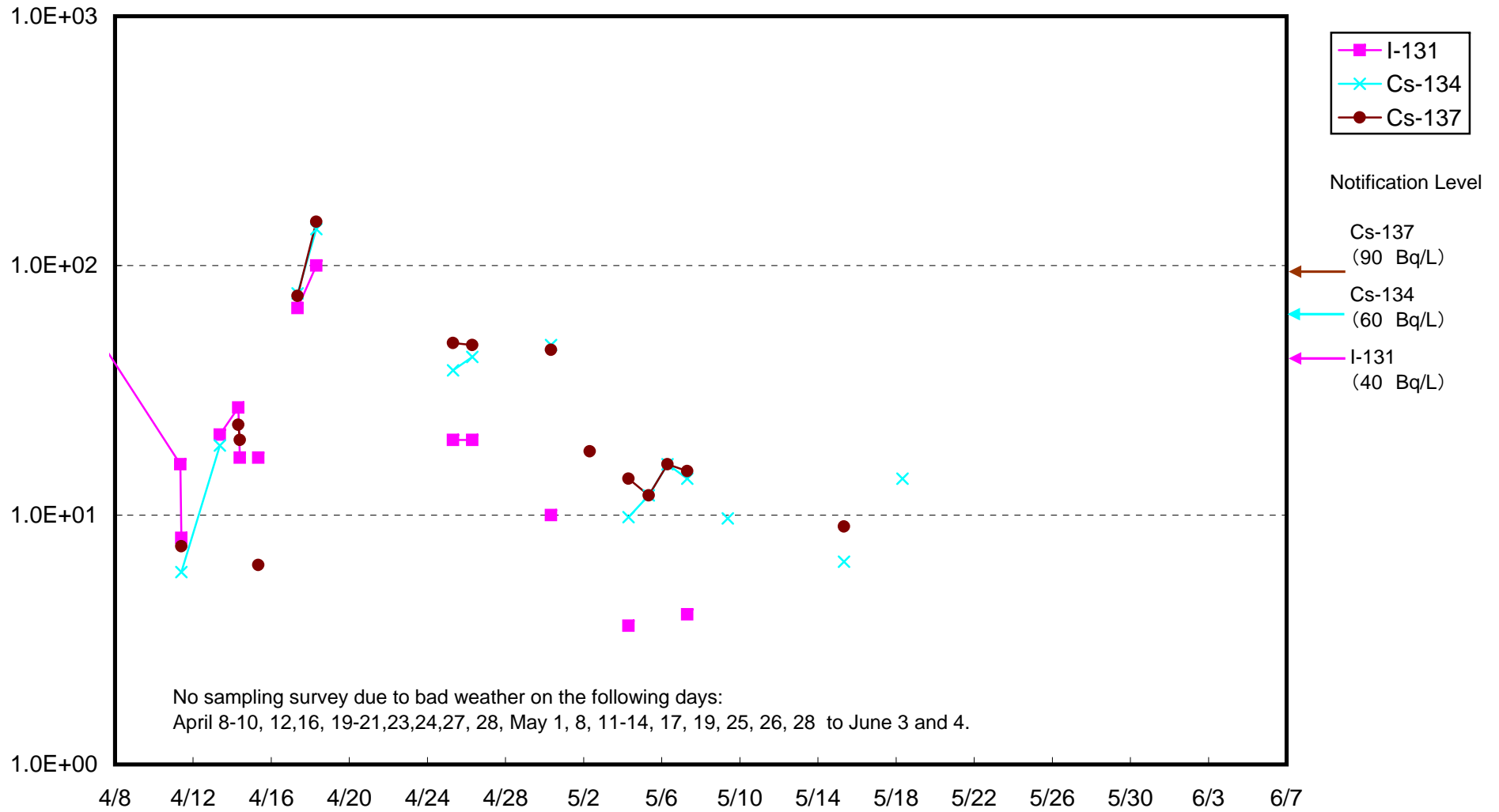
Radioactivity Density of Seawater around approx. 15 km offshore of Iwasawa Shore upper layer (Bq/L)



Radioactivity Density of Seawater around approx. 15 km offshore of Iwasawa Shore lower layer (Bq/L)

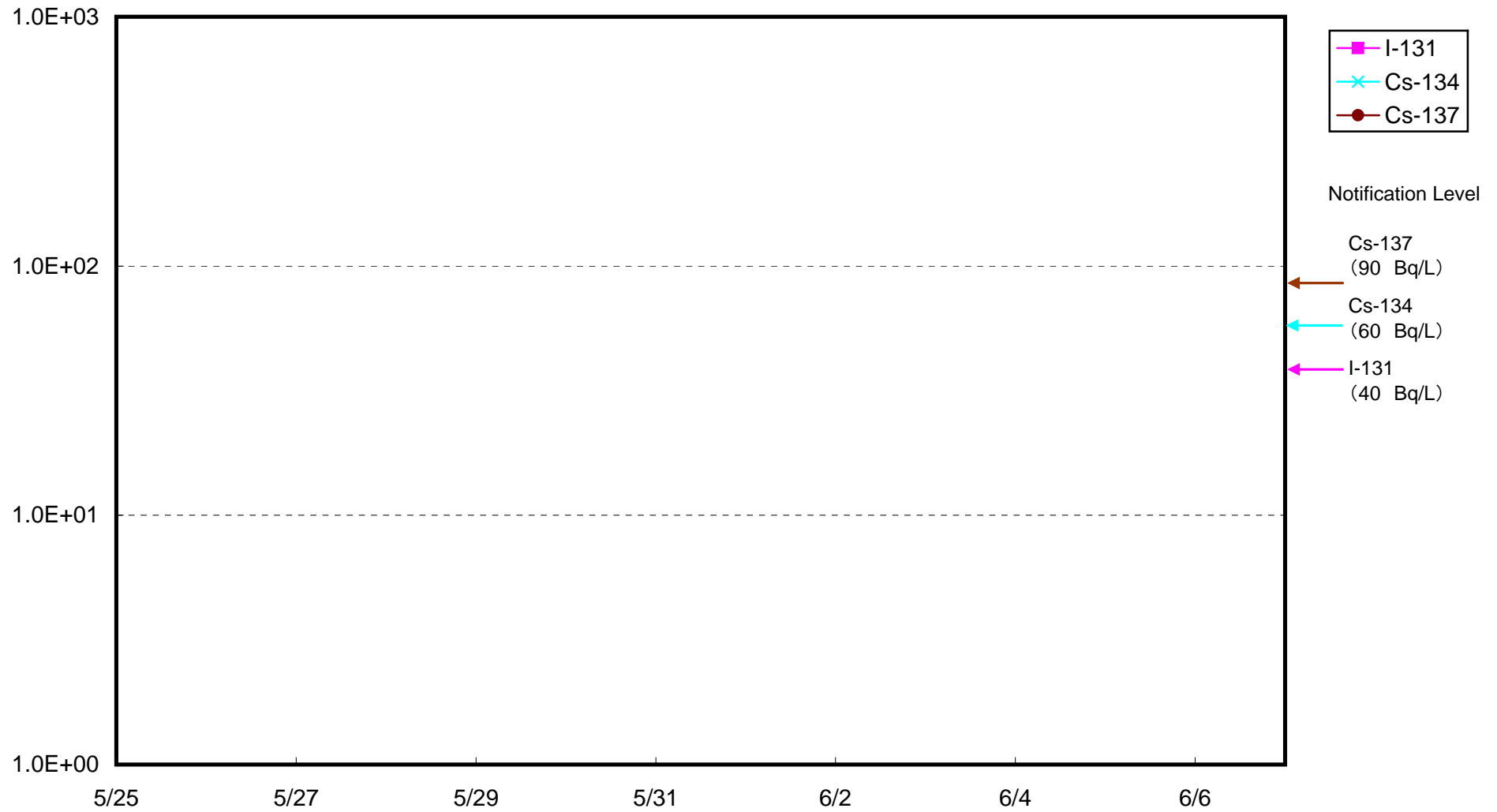


Radioactivity Density of Seawater around approx. 15 km offshore of Hirono town upper layer (Bq/L)

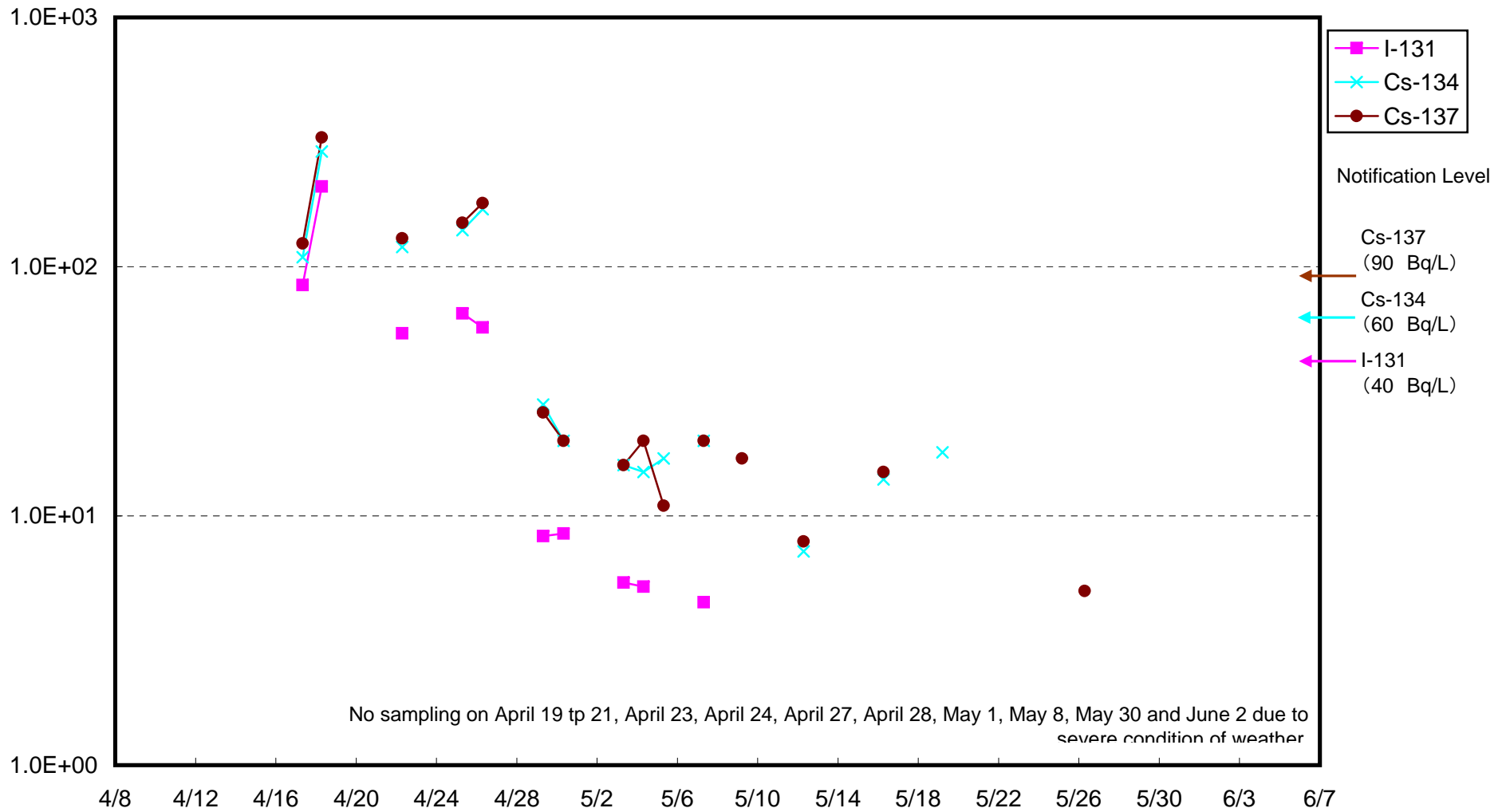




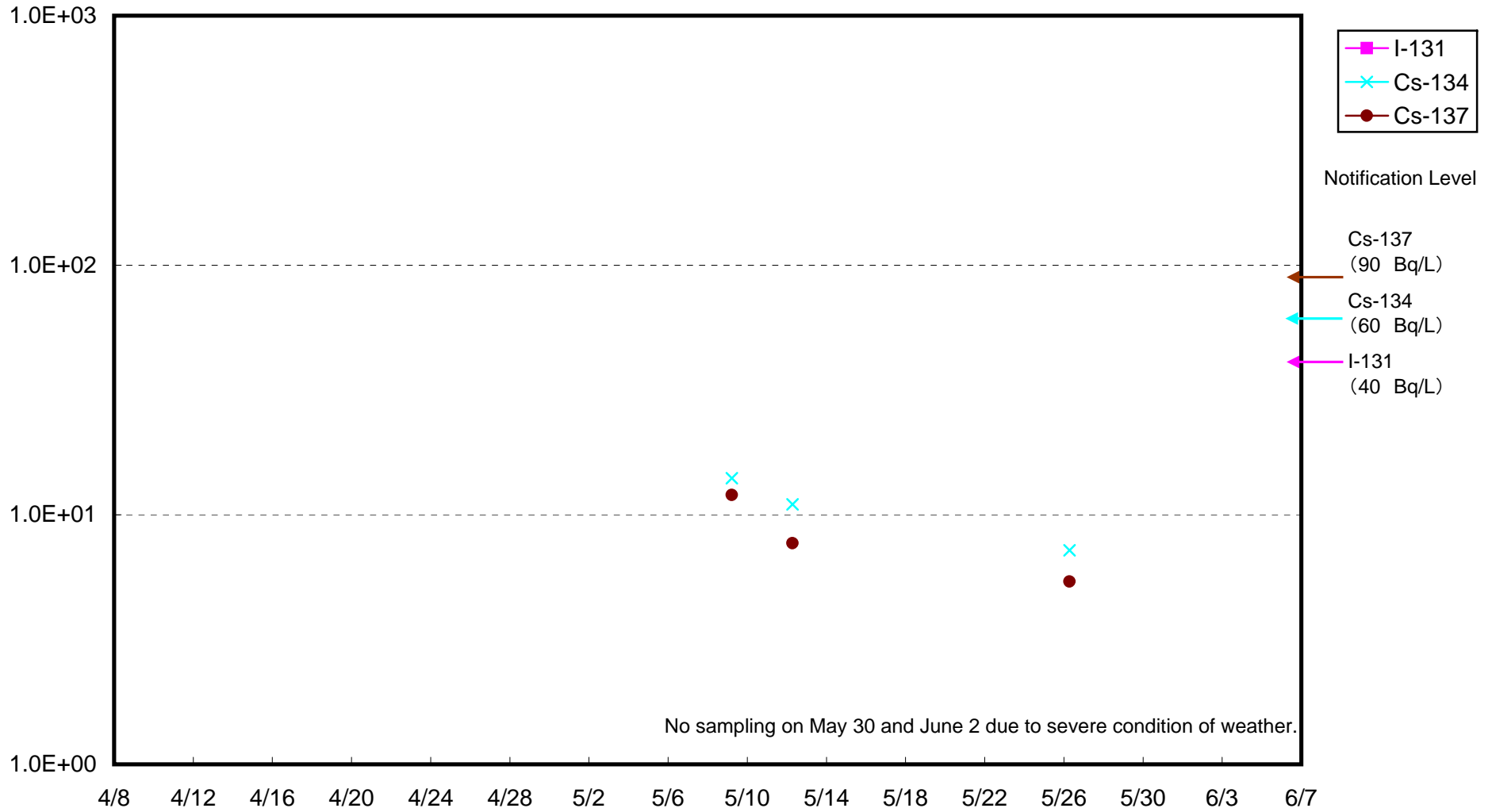
Radioactivity Density of Seawater around approx. 15 km offshore of Hirono town lower layer (Bq/L)



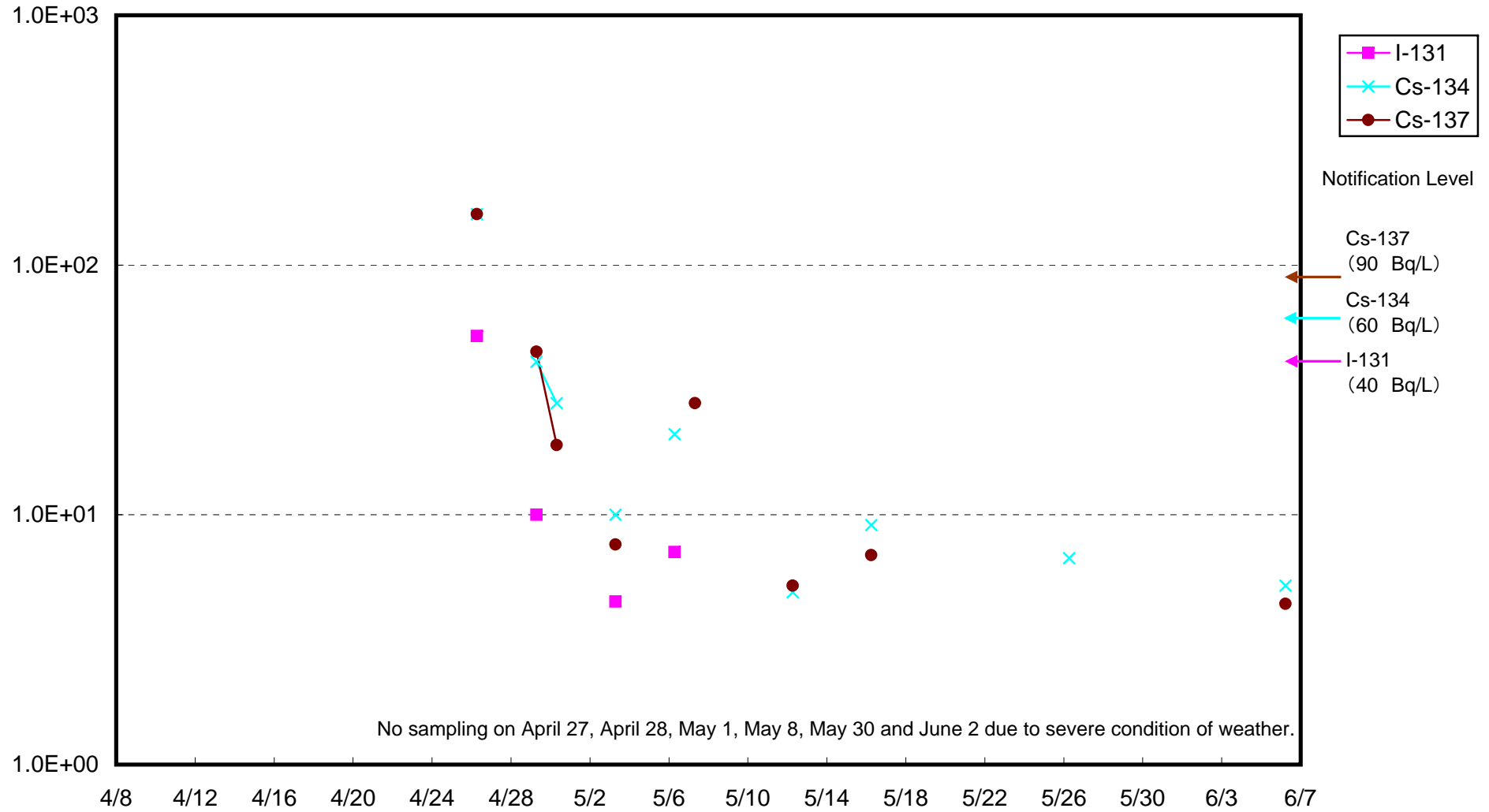
Radioactivity Density of Seawater around approx. 3km offshore of Iwasawa Shore Upper layer (Bq/L)



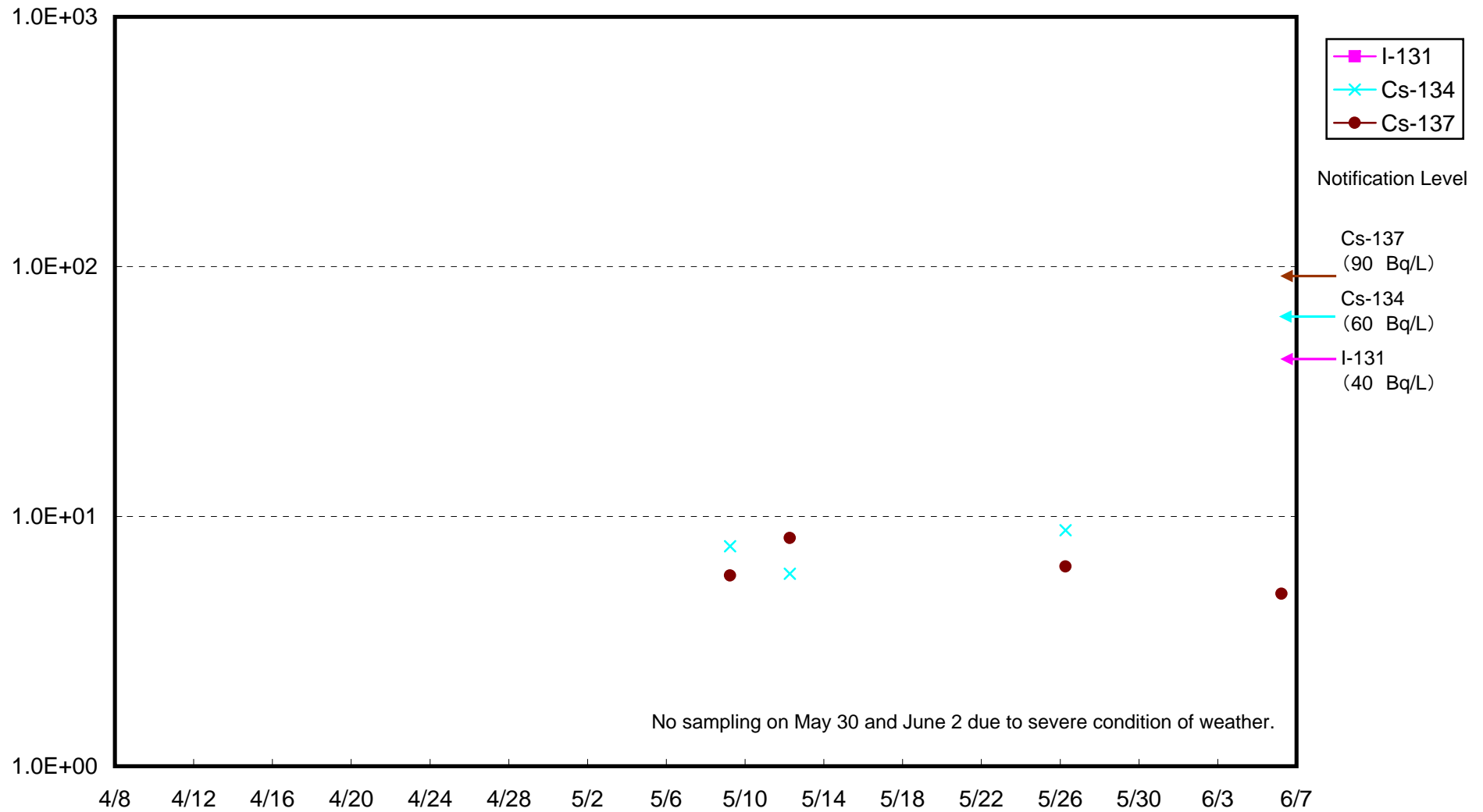
Radioactivity Density of Seawater around approx. 3km offshore of Iwasawa Shore lower layer (Bq/L)



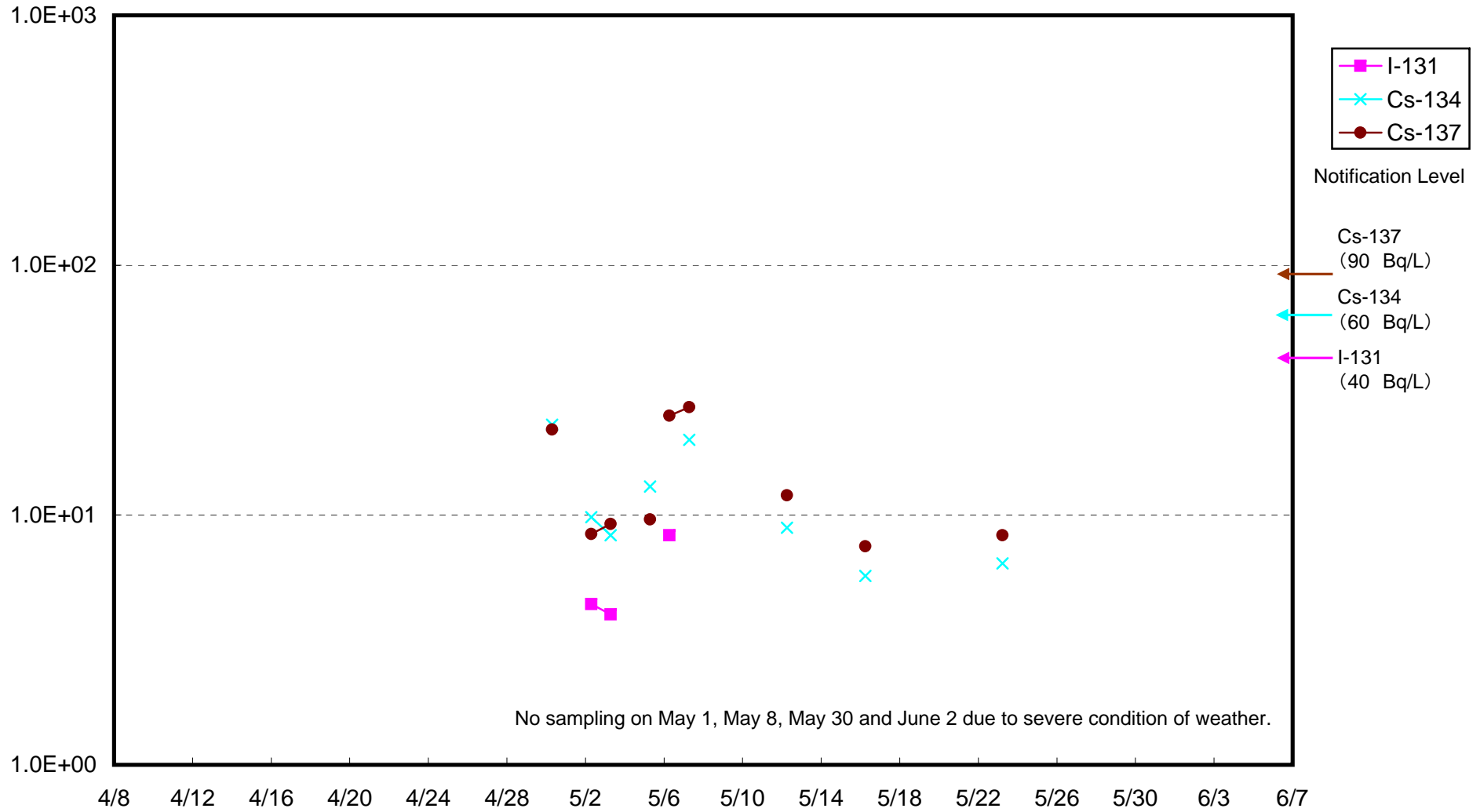
Radioactivity Density of Seawater around approx. 3km offshore of Natsu-gawa upper layer (Bq/L)



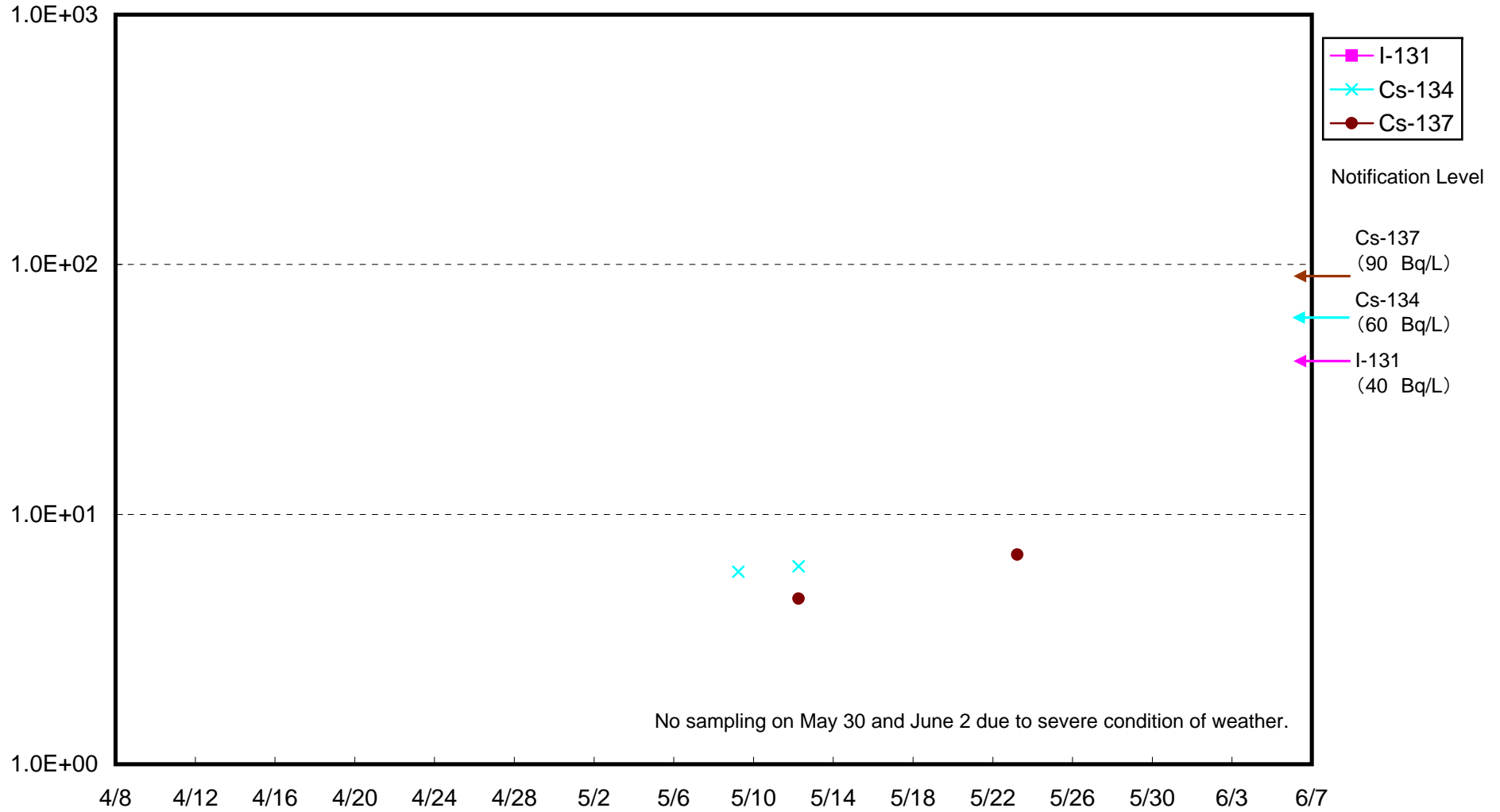
Radioactivity Density of Seawater around approx. 3km offshore of Natsu-gawa lower layer (Bq/L)



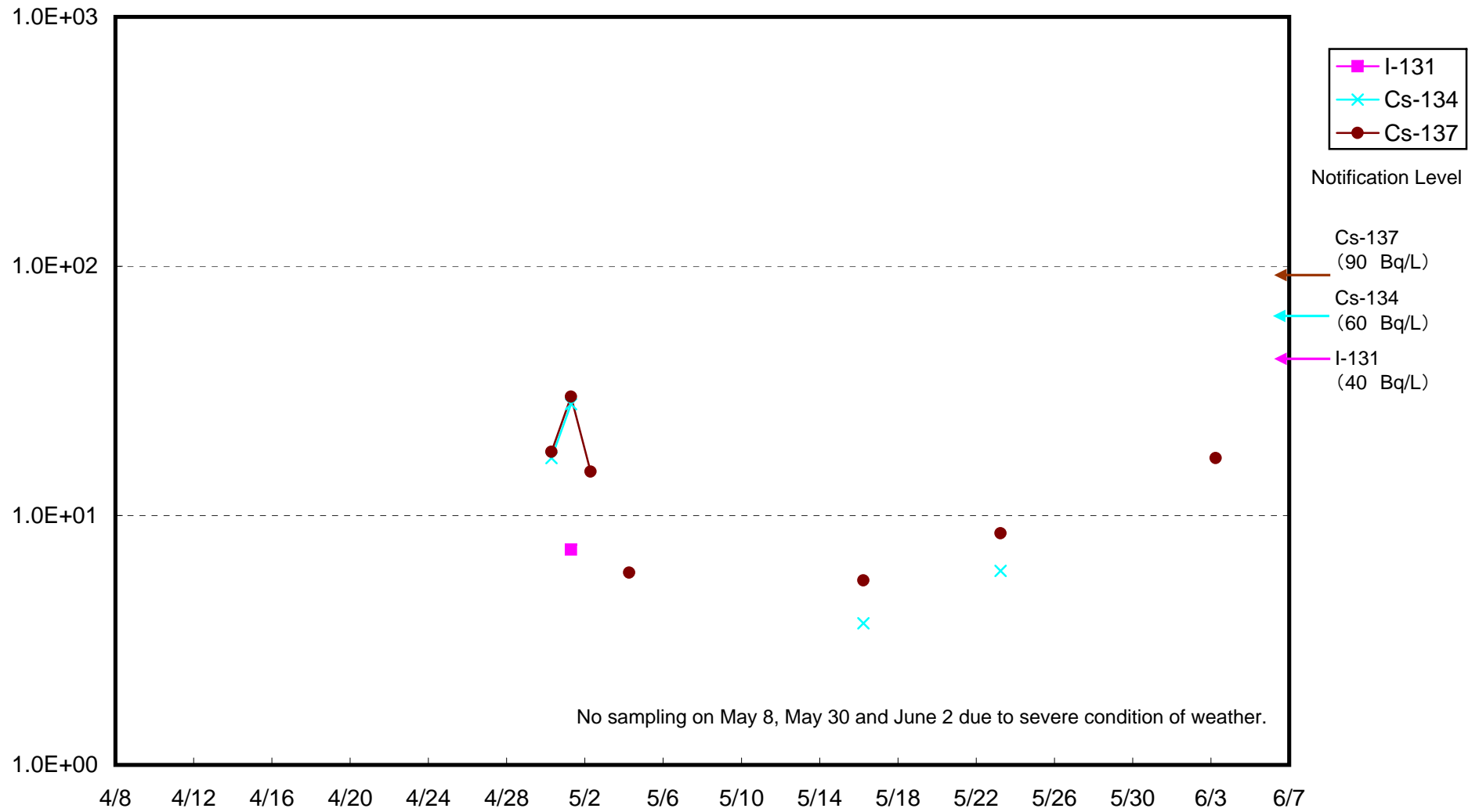
Radioactivity Density of Seawater around approx. 3km offshore of Numanouchi upper layer (Bq/L)



Radioactivity Density of Seawater around approx. 3km offshore of Numanouchi lower layer (Bq/L)



Radioactivity Density of Seawater around approx. 3km offshore of Toyoma upper layer (Bq/L)





Radioactivity Density of Seawater around approx. 3km offshore of Toyoma upper layer (Bq/L)

