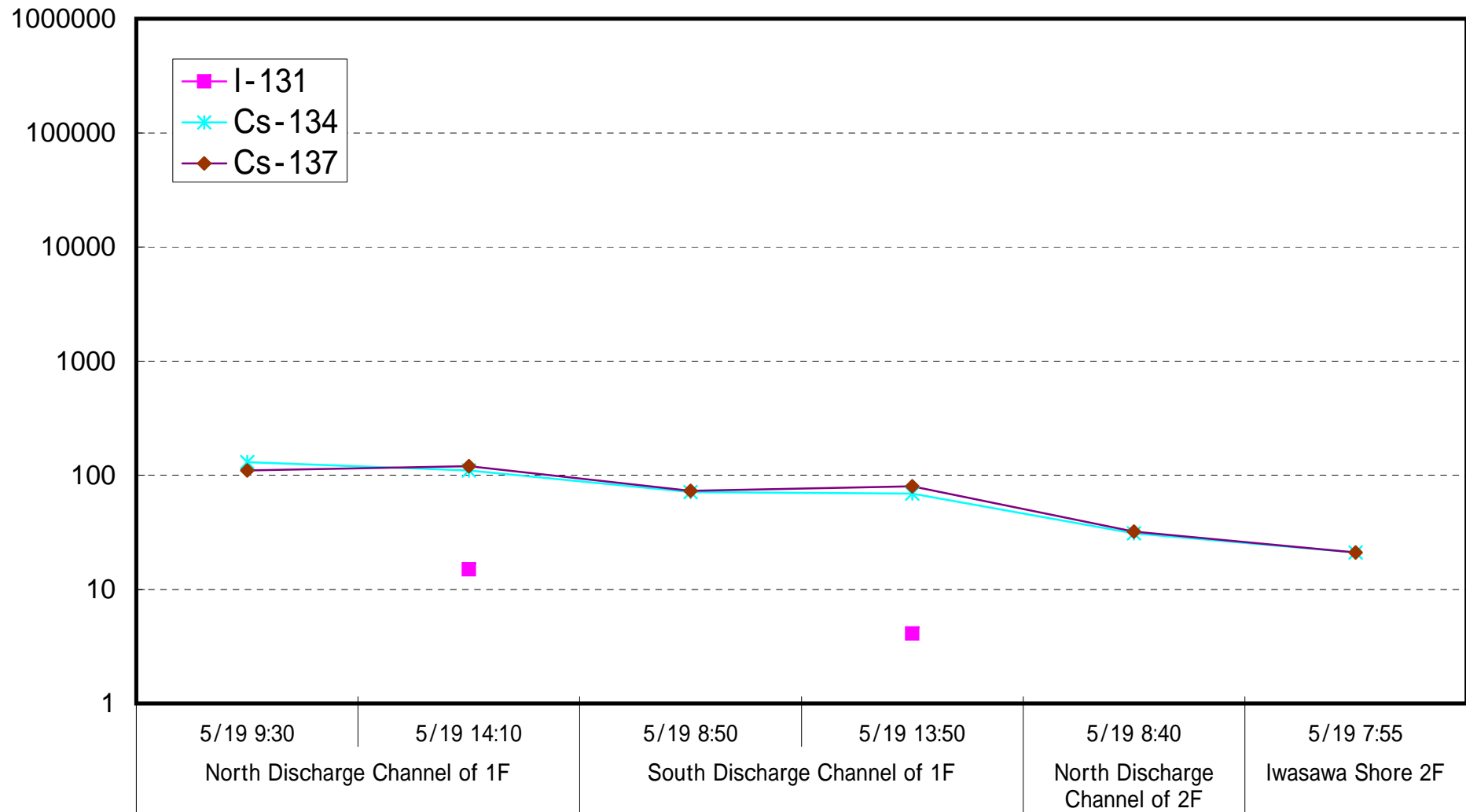
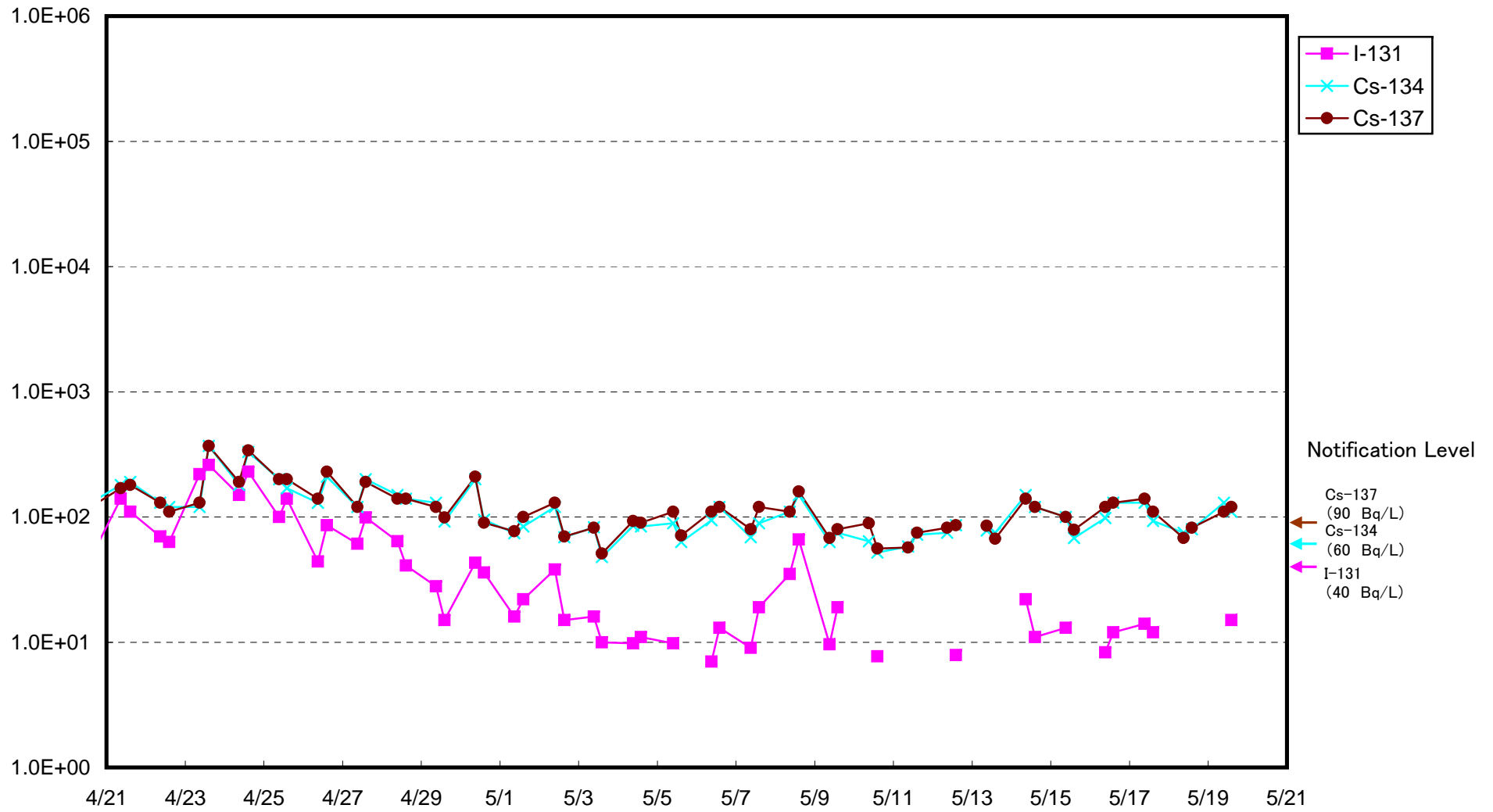


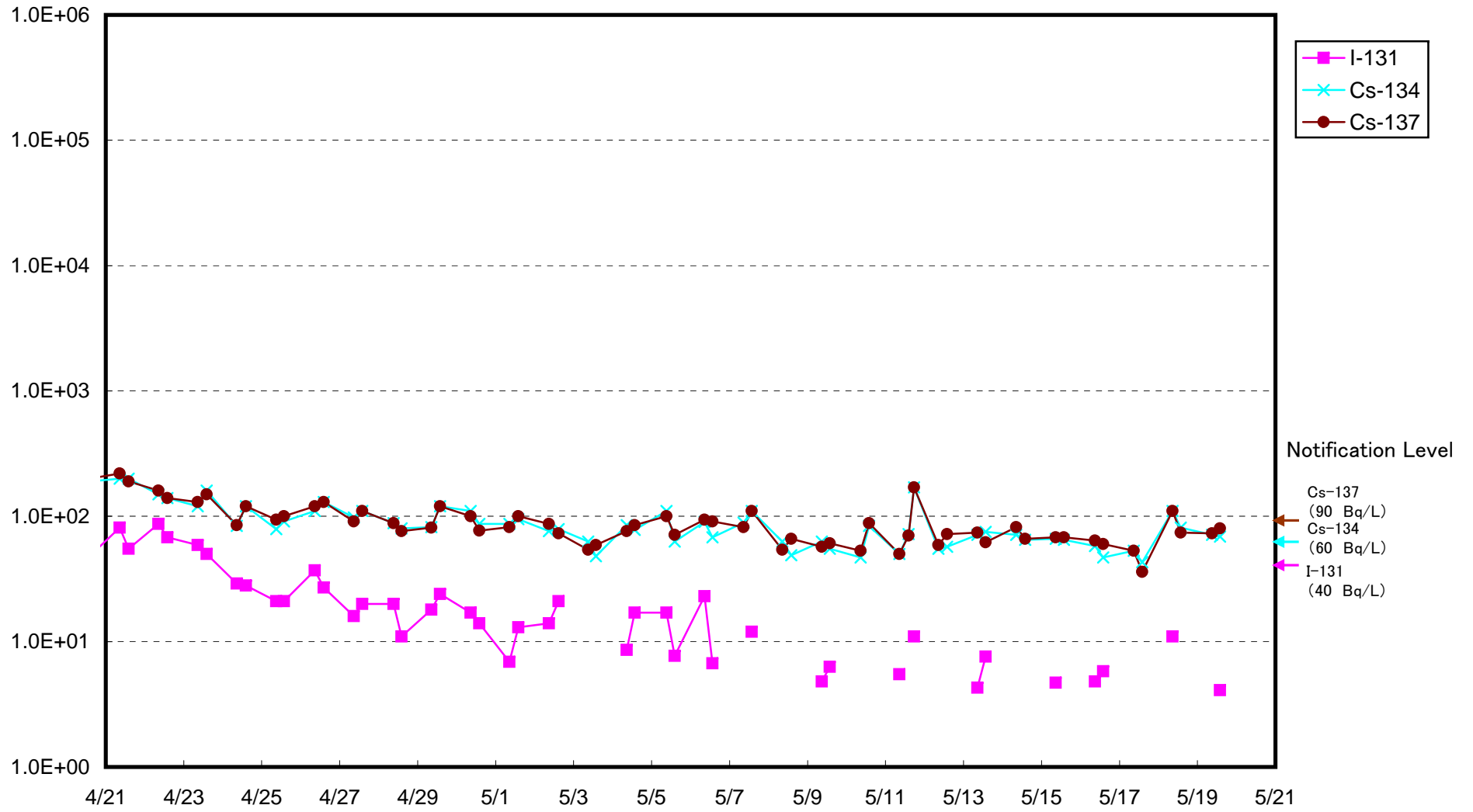
Radioactive Density of Seawater (Bq/L)



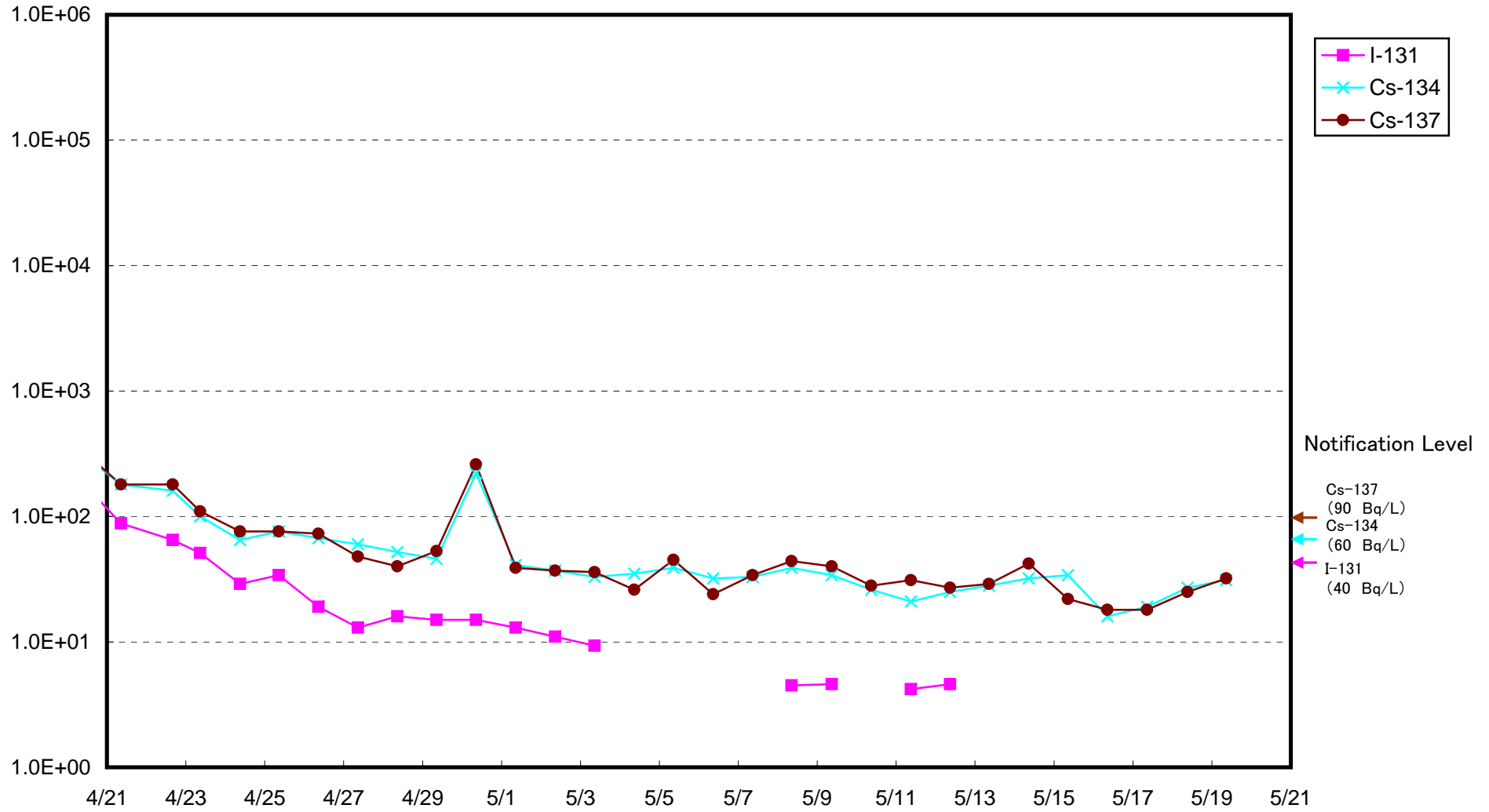
Radioactivity Density of Seawater at North of 1F5-6 Discharge Channel (approx.30m north of 5-6 discharge channel)  
(Bq/L)



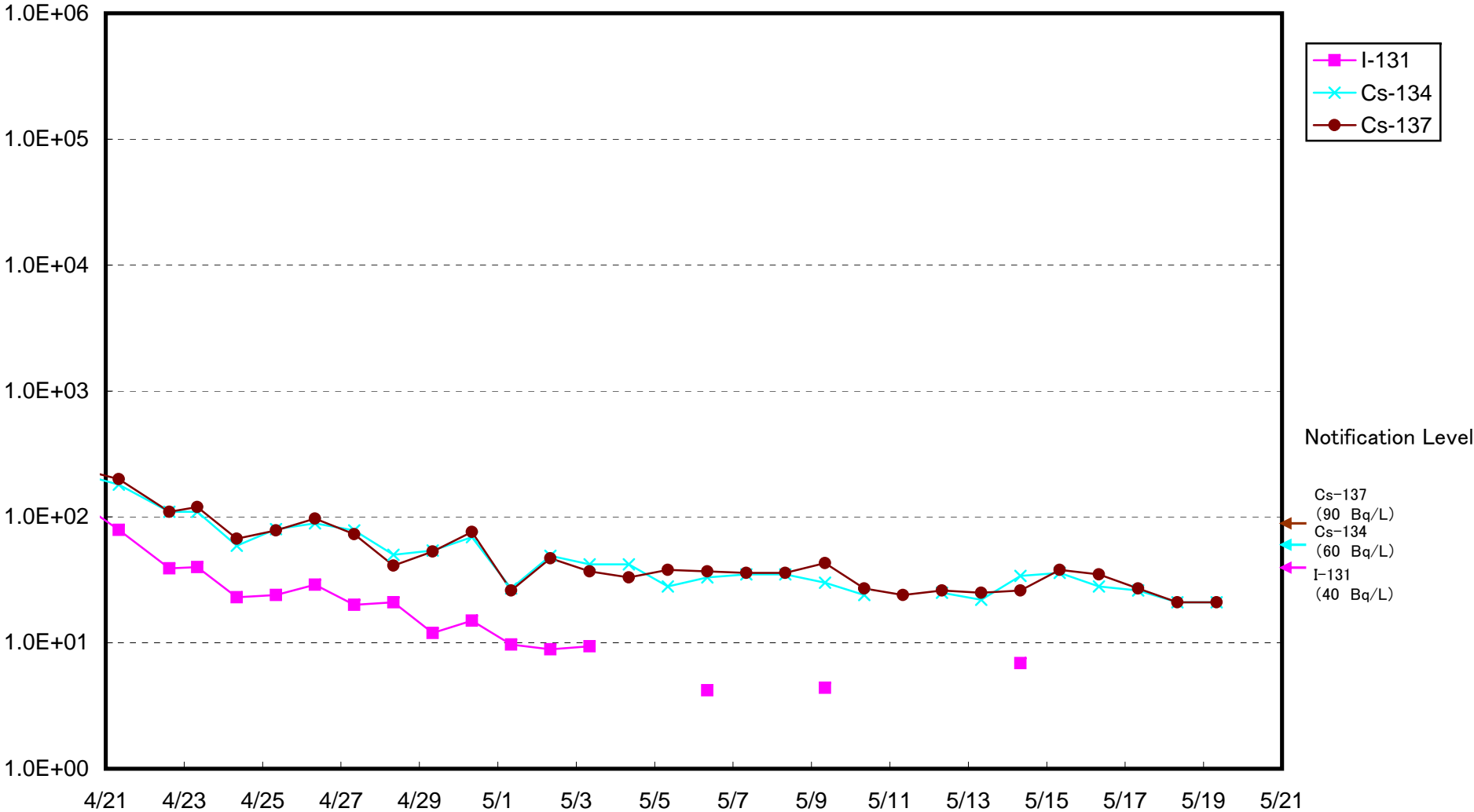
Radioactivity Density of Seawater at South Discharge Channel of 1F (Bq/L)



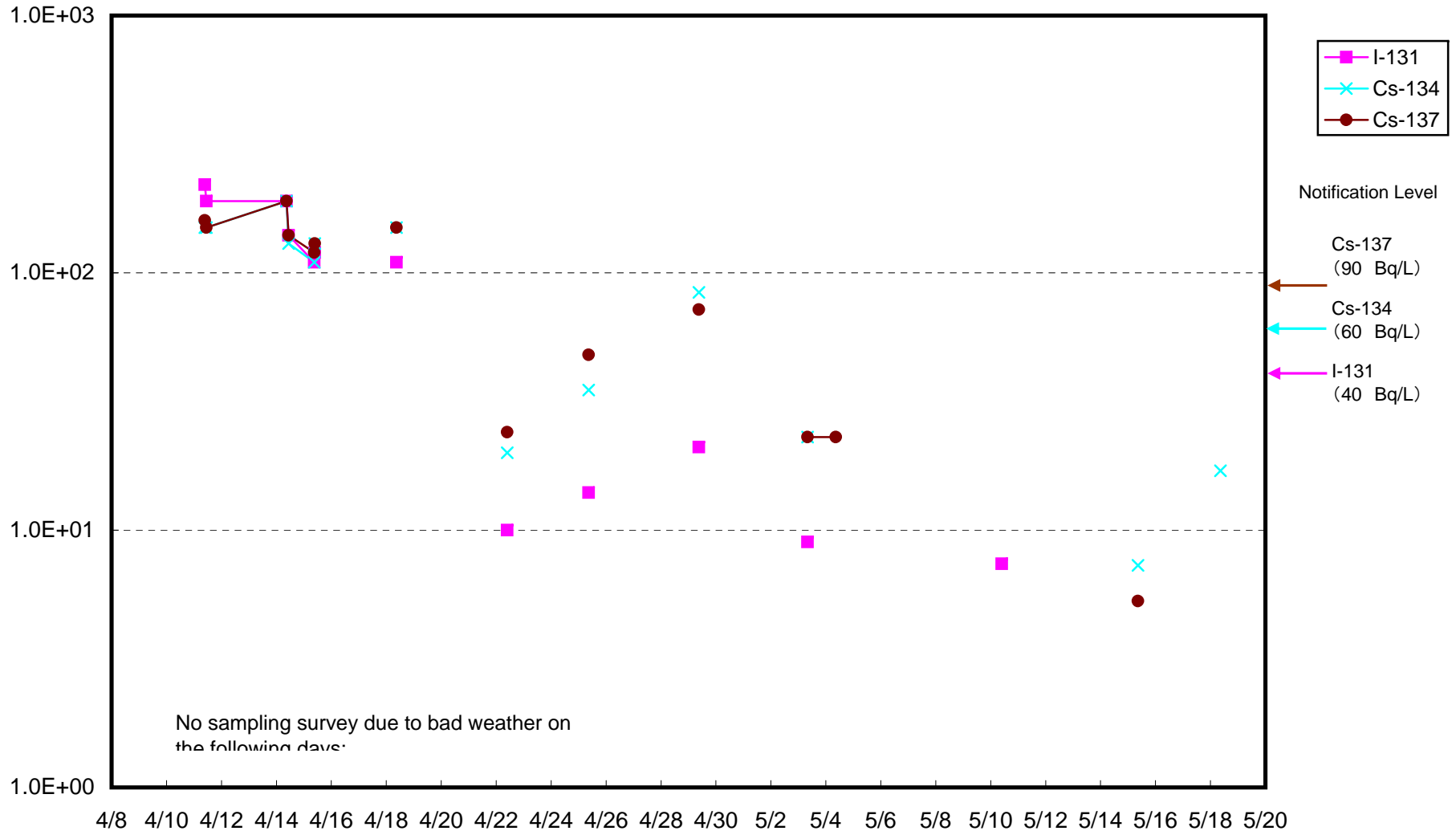
Radioactivity Density of Seawater at North Discharge Channel of 2F (Bq/L)



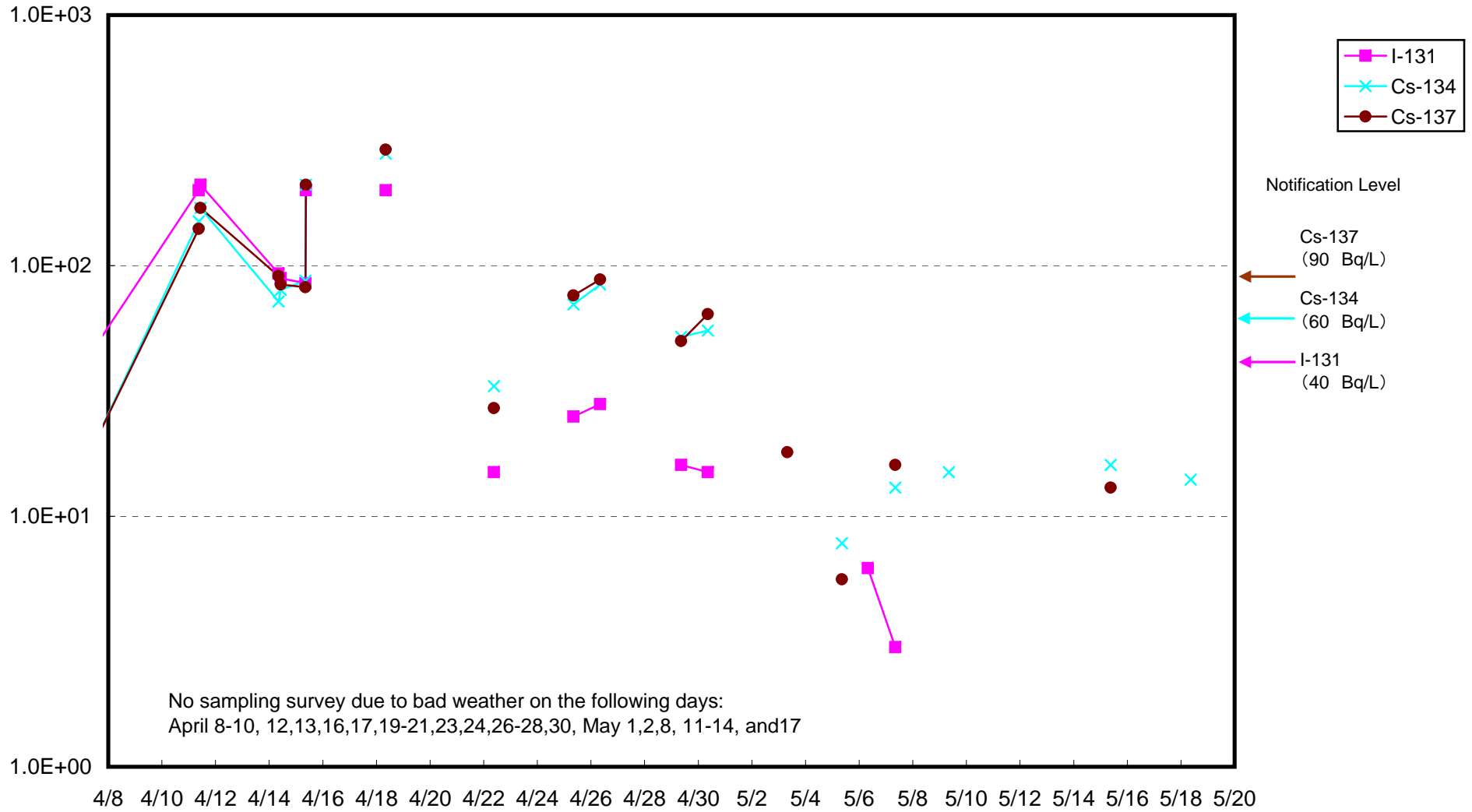
Radioactivity Density of Seawater at Iwasawa Shore 2F (Bq/L)



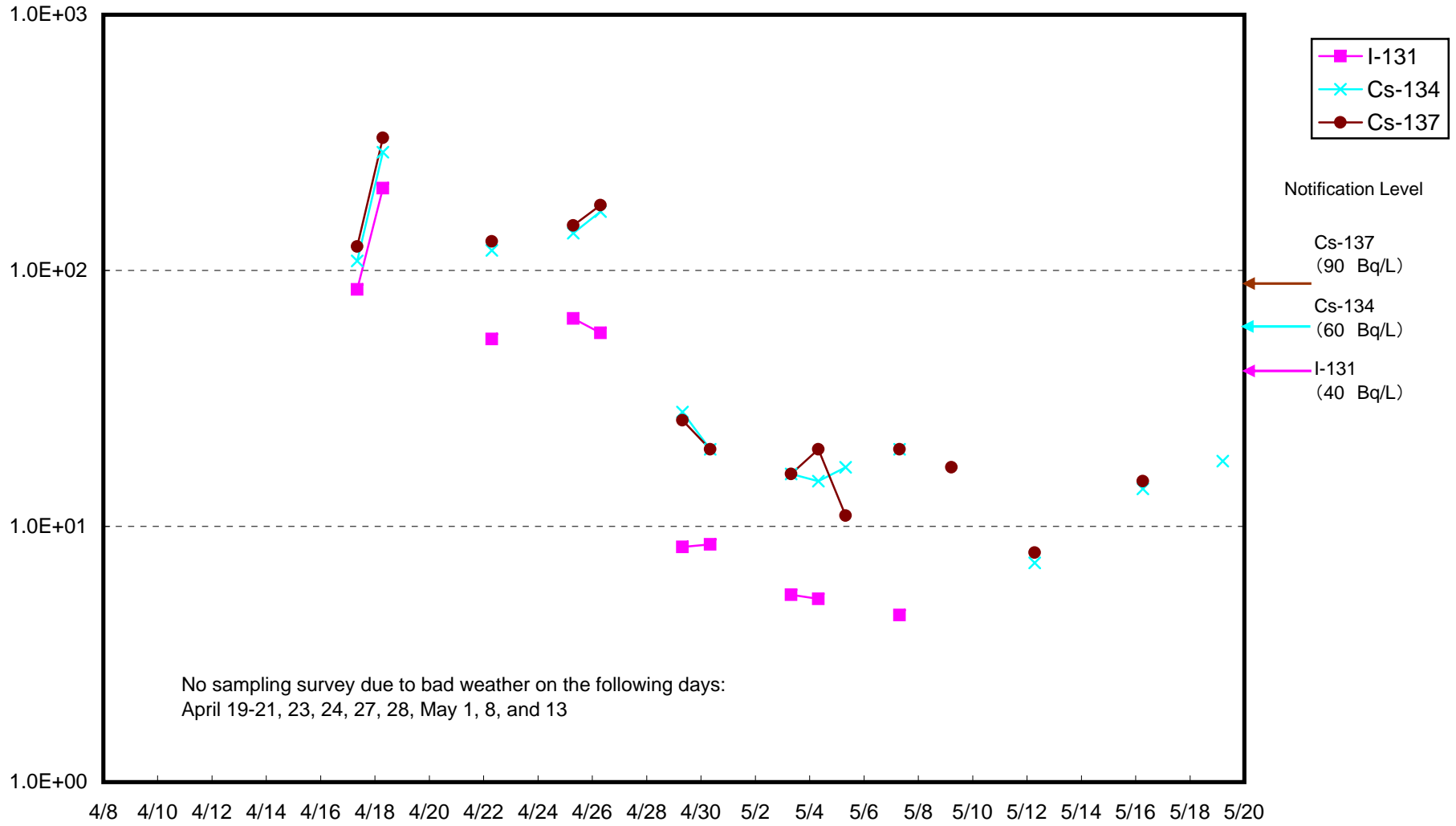
Radioactivity Density of Seawater around approx. 15 km offshore of Fukushima Daiichi (Bq/L)



Radioactivity Density of Seawater around approx. 15 km offshore of Fukushima Daini (Bq/L)

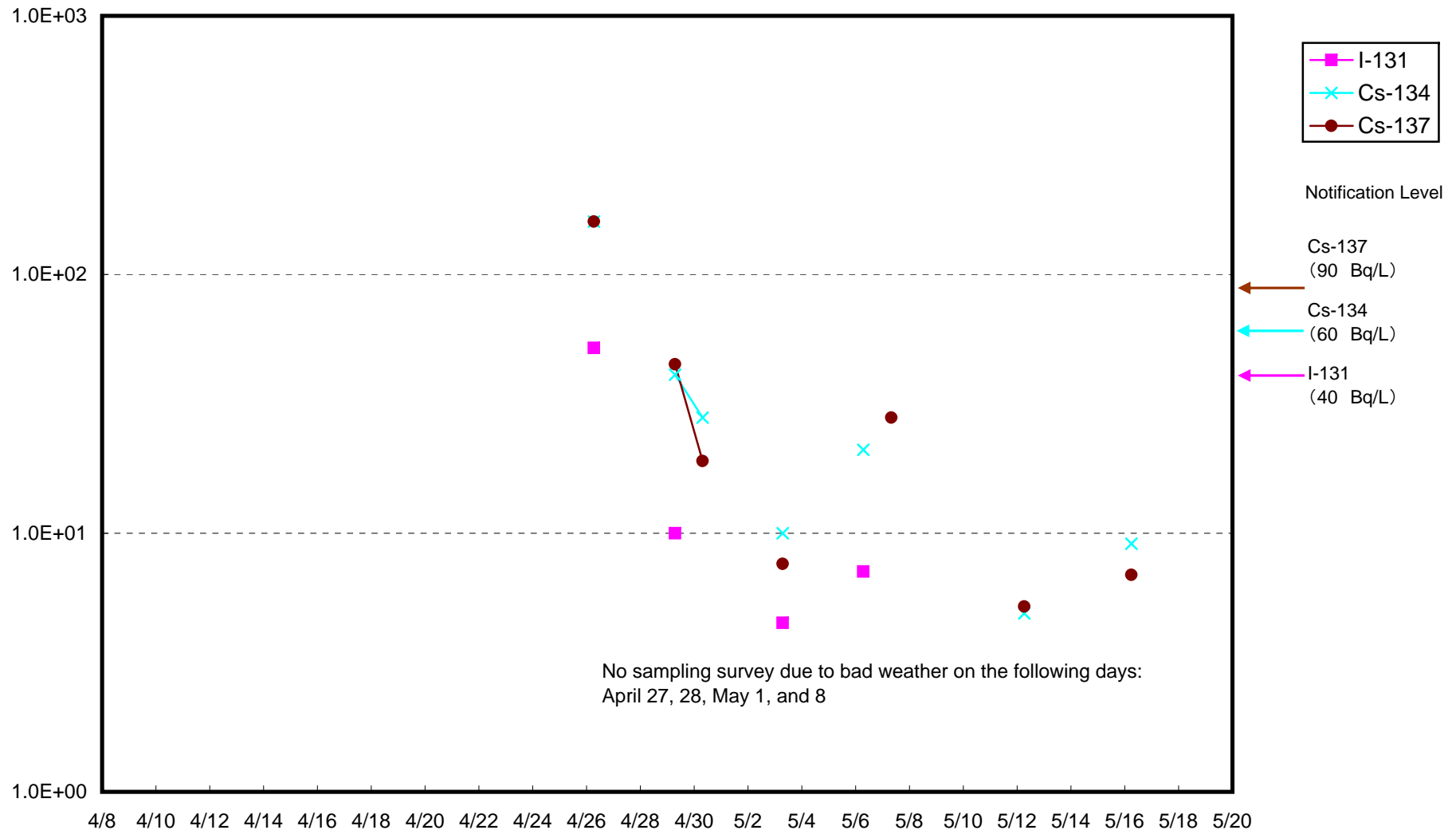


Radioactivity Density of Seawater around 3 km offshore of Northern Part of Iwaki City (Bq/L)  
(Upper layer)

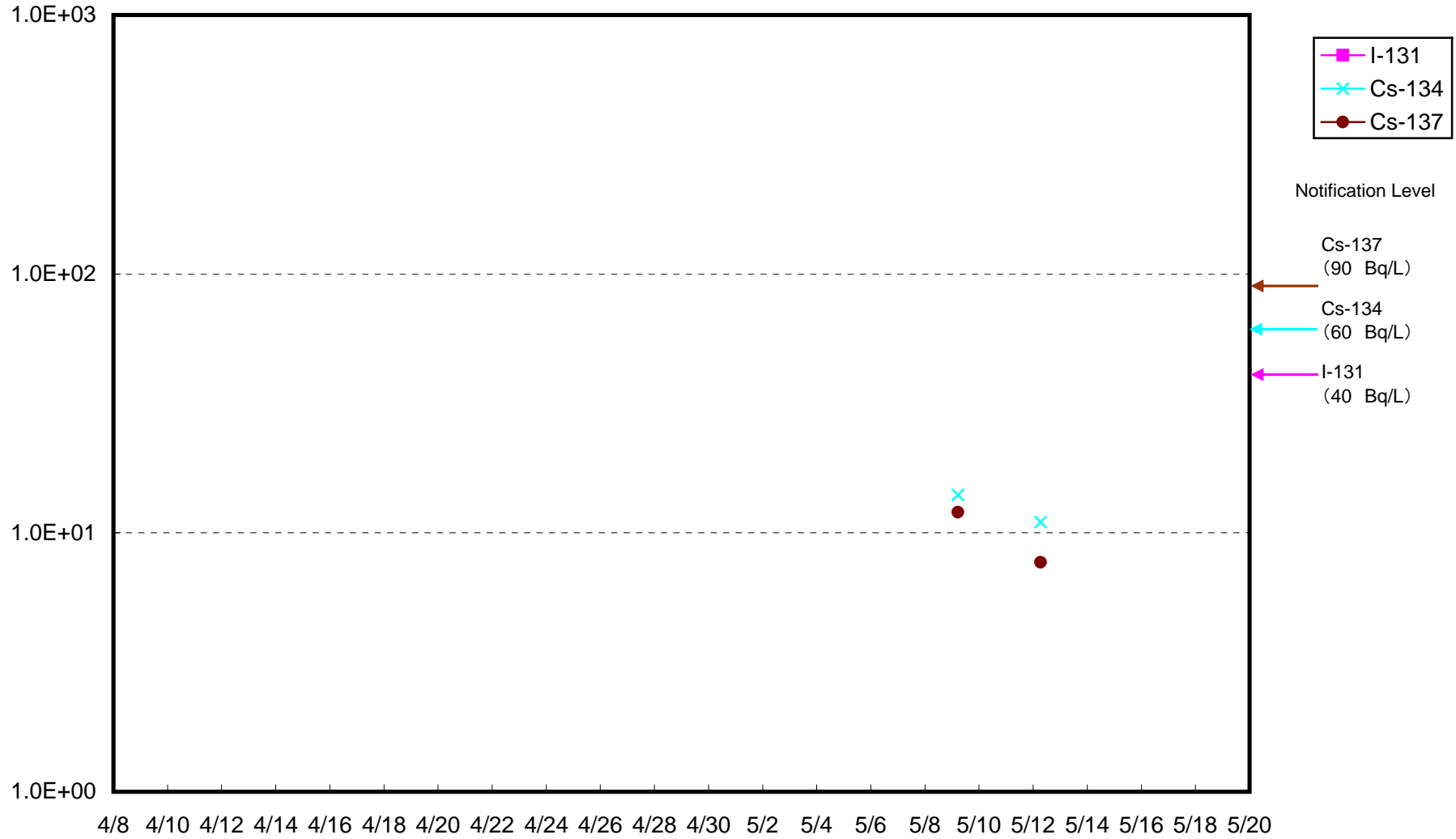




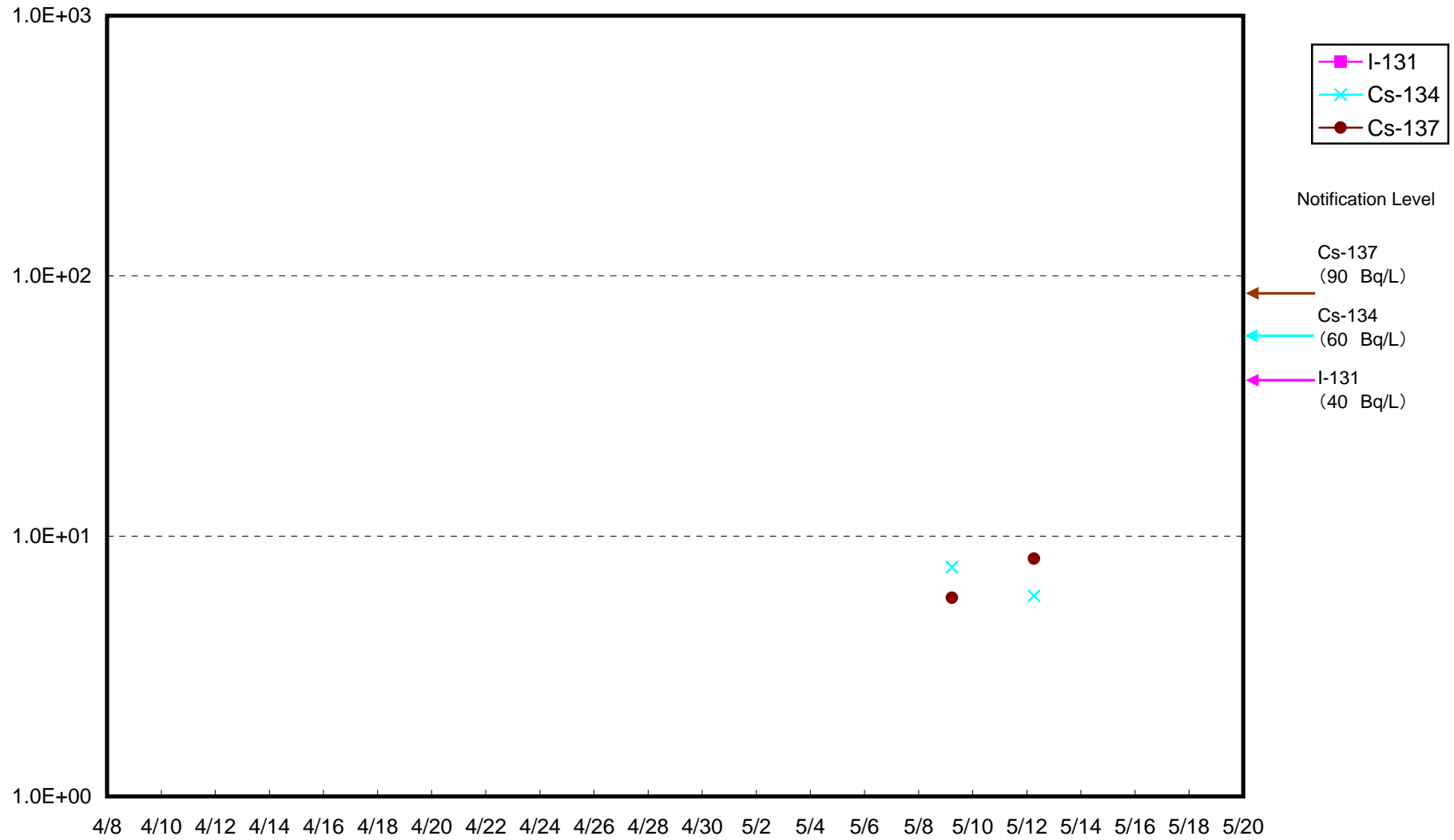
Radioactivity Density of Seawater around 3 km offshore of Natsui River (Bq/L)  
(Upper layer)



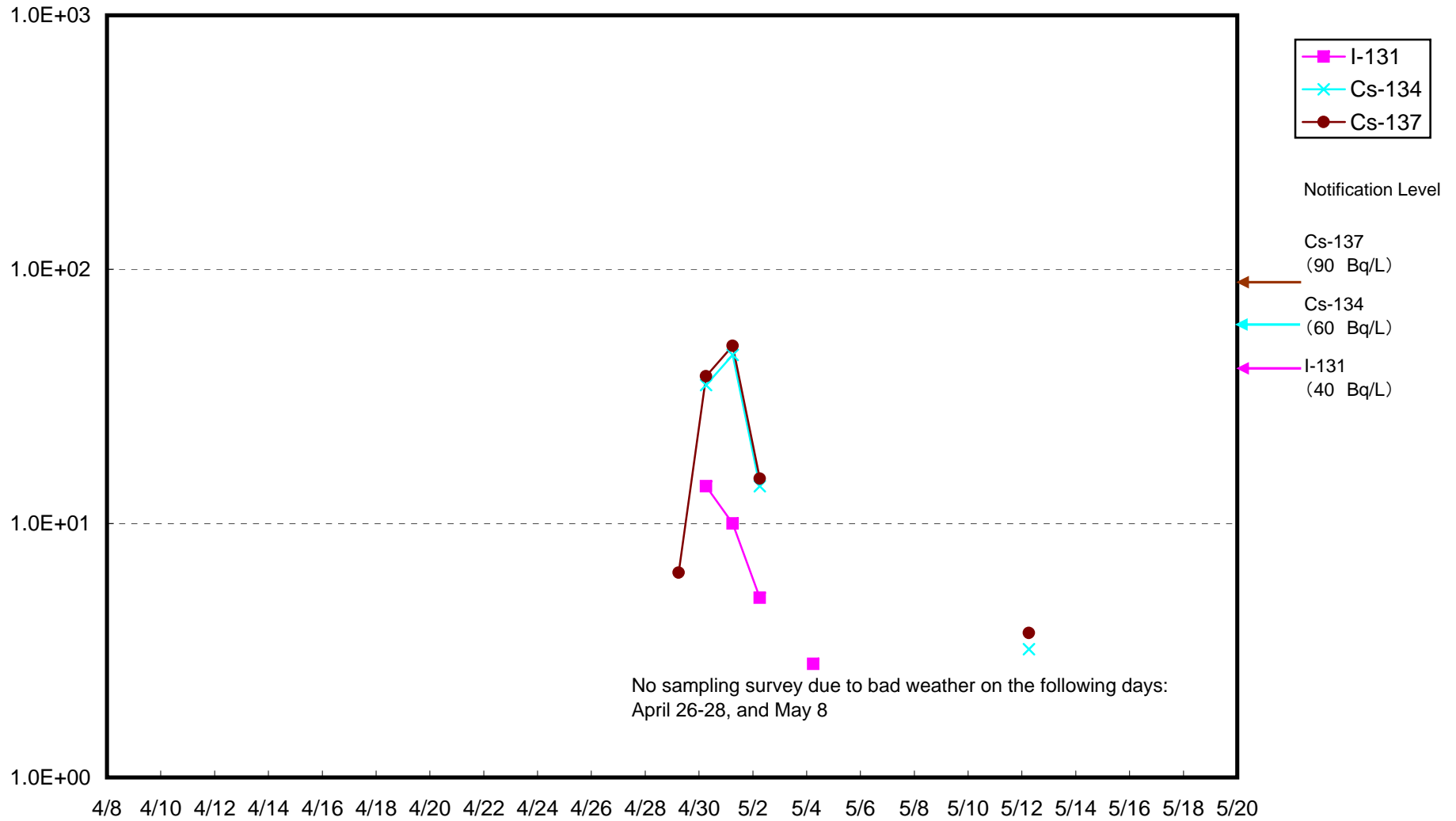
Radioactivity Density of Seawater around 3 km offshore of Northern Part of Iwaki City (Bq/L)  
(Lower layer)



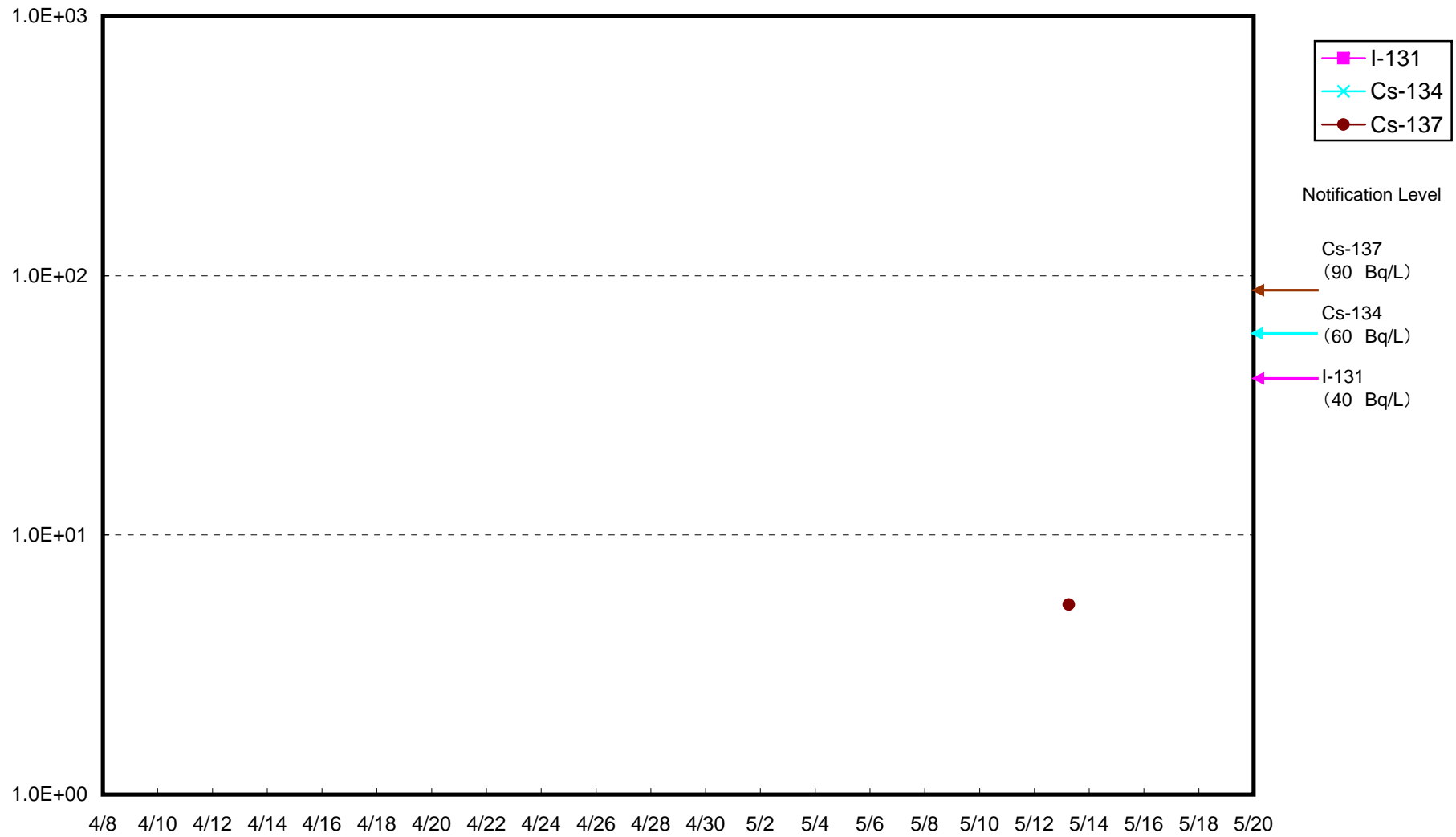
Radioactivity Density of Seawater around 3 km offshore of Natsui River (Bq/L)  
(Lower layer)



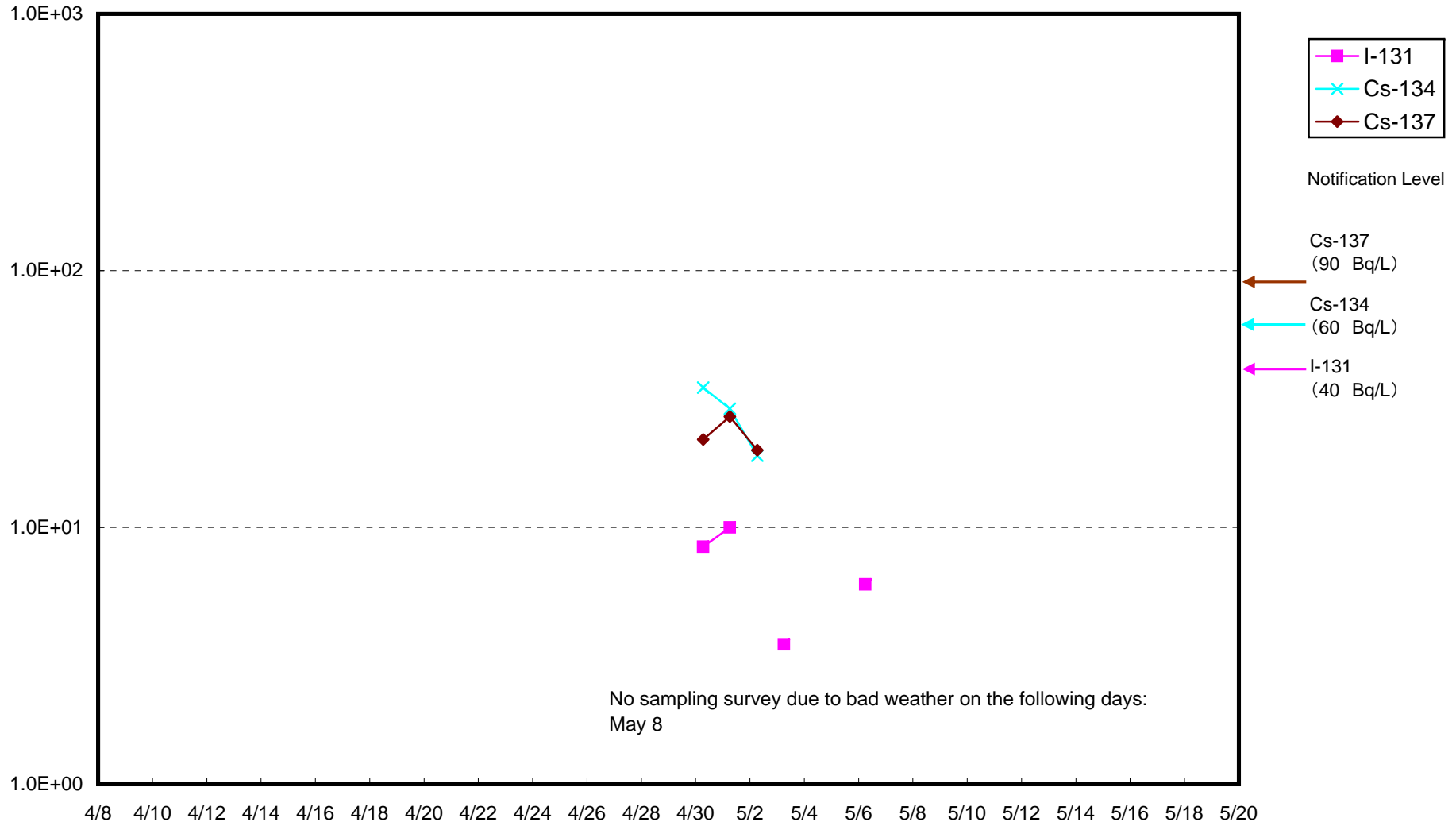
Radioactivity Density of Seawater around 3 km offshore of Onahama Port (Bq/L)  
(Upper layer)



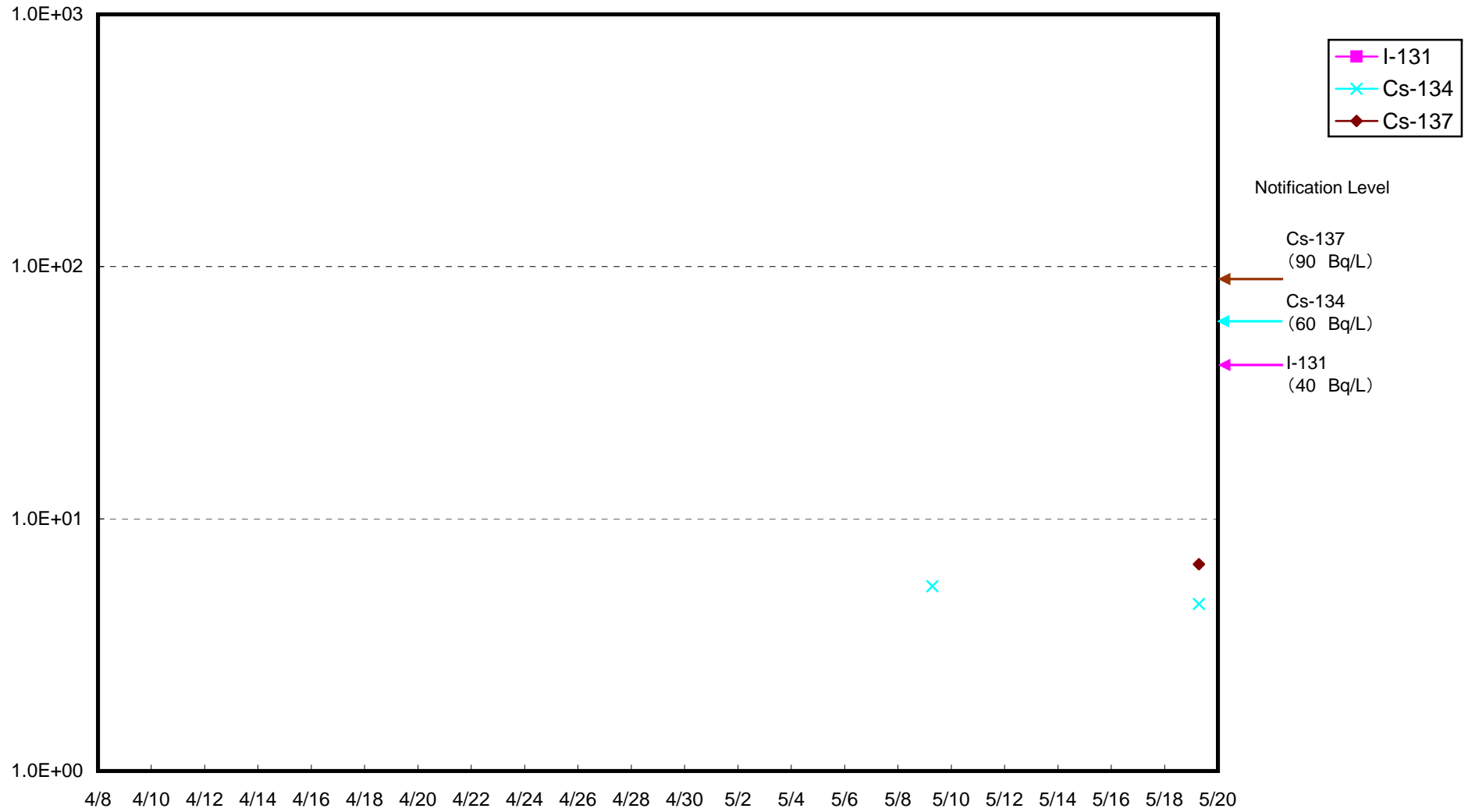
Radioactivity Density of Seawater around 3 km offshore of Onahama Port (Bq/L)  
(Lower layer)



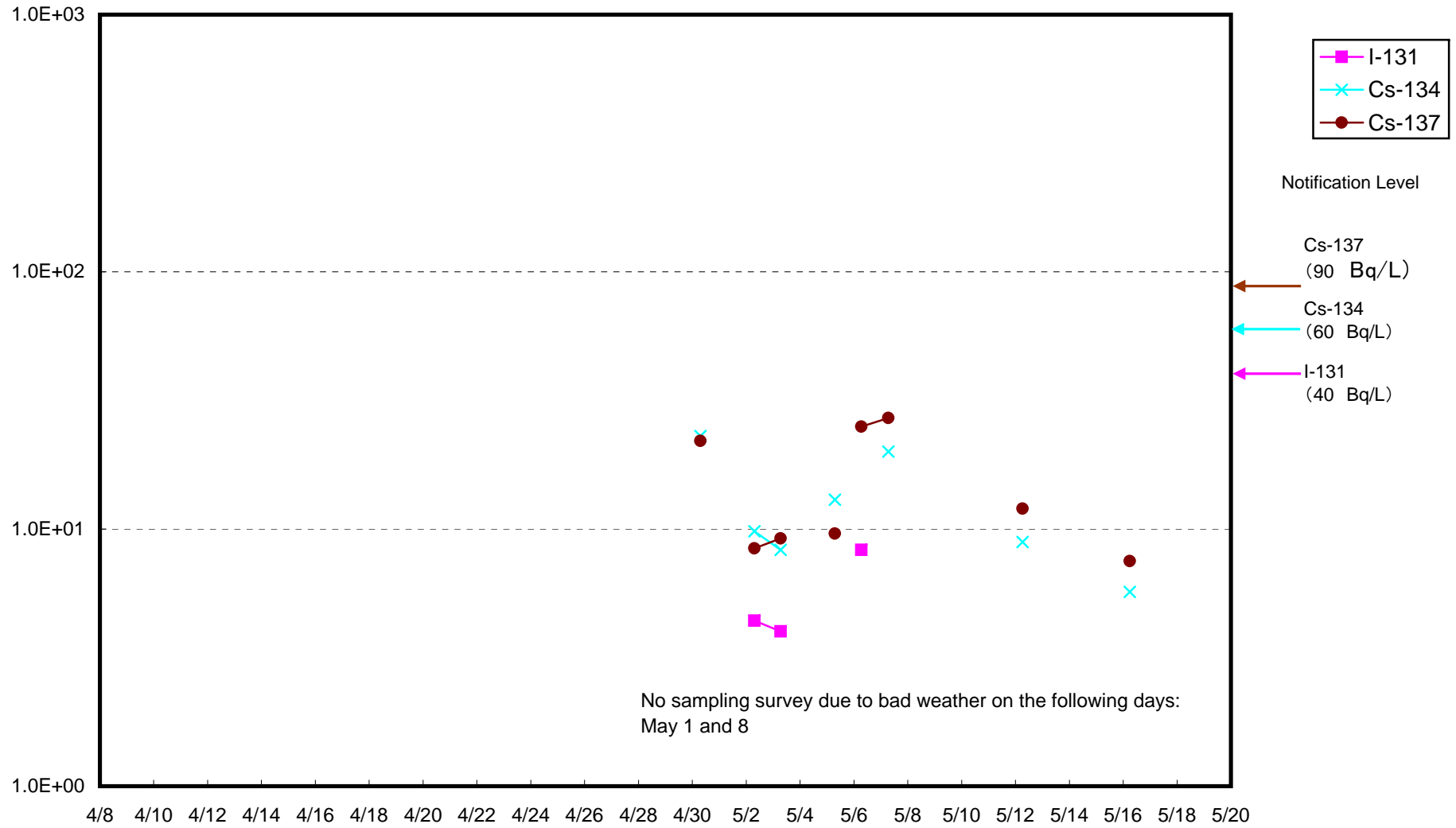
Radioactivity Density of Seawater around 3 km offshore of Ena (Bq/L)  
(Upper layer)



Radioactivity Density of Seawater around 3 km offshore of Ena (Bq/L)  
(Lower layer)

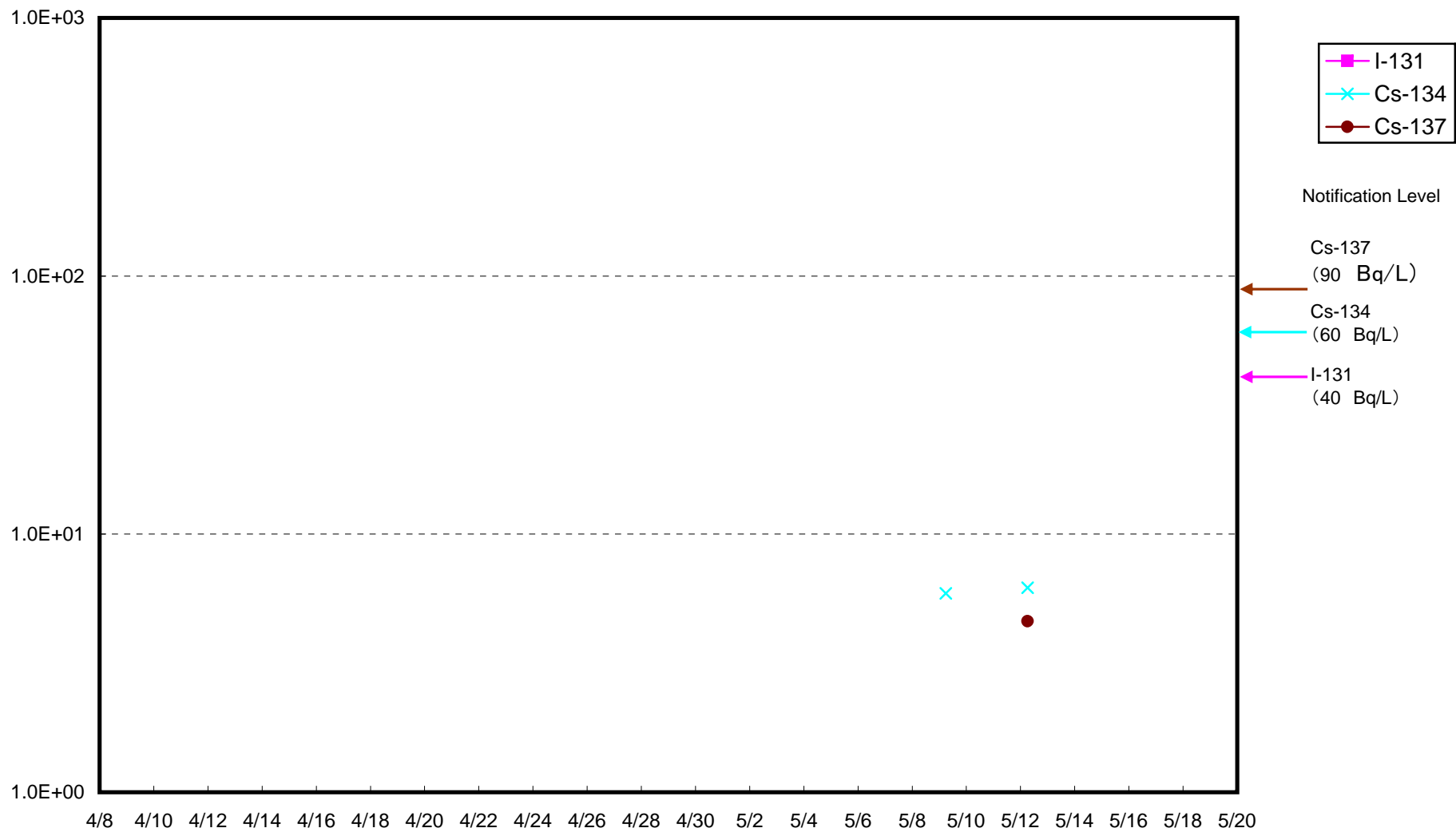


Radioactivity Density of Seawater around 3 km offshore of Numanouchi (Bq/L)  
(Upper layer)

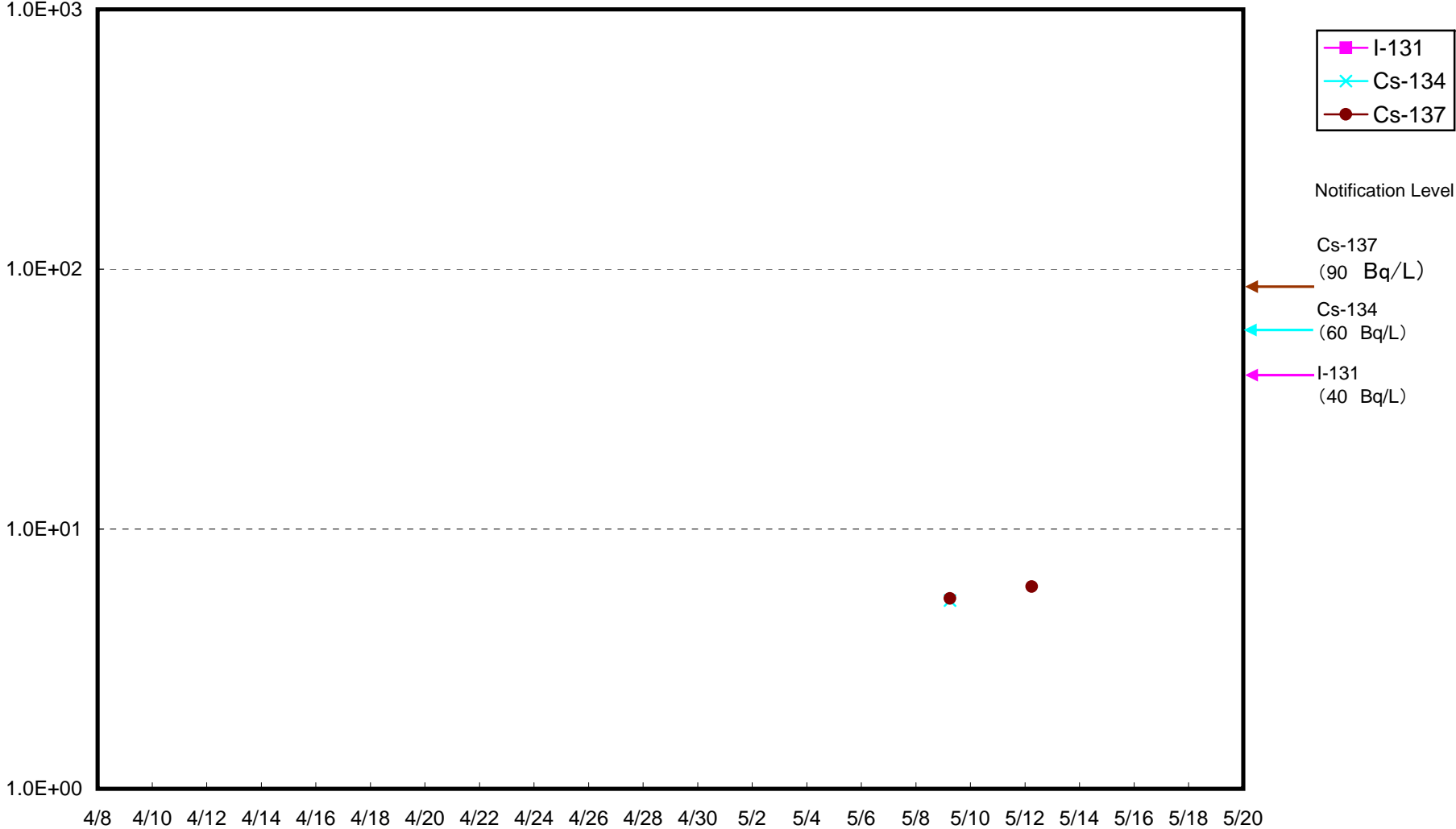




Radioactivity Density of Seawater around 3 km offshore of Numanouchi (Bq/L)  
(Lower layer)



Radioactivity Density of Seawater around 3 km offshore of Toyoma (Bq/L)  
(Lower layer)



Radioactivity Density of Seawater around 3 km offshore of Toyoma (Bq/L)  
(Upper layer)

