

(1) Okuma line 1 L (0-81) Circuit Breaker  
damaged

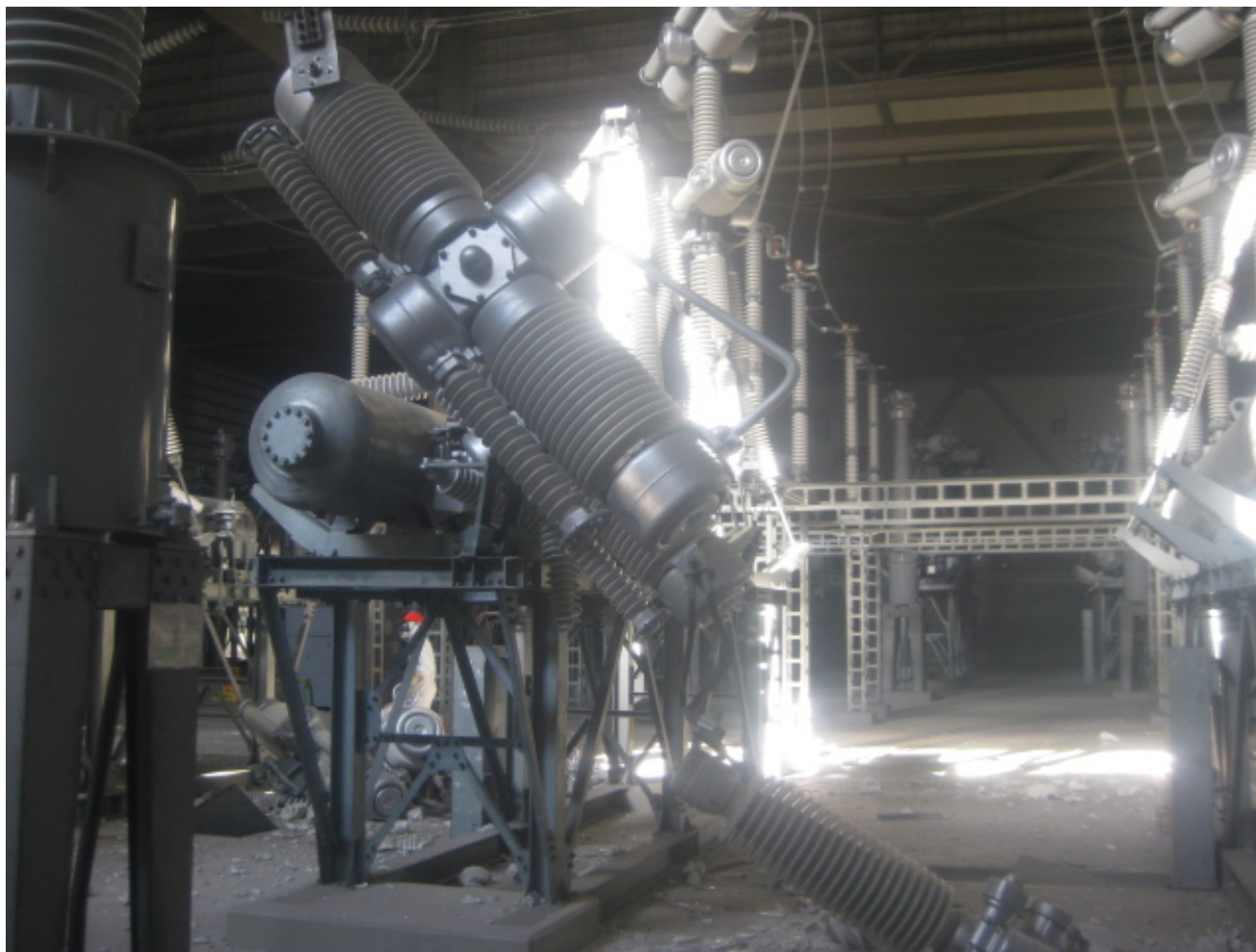


photo : TEPCO March 23rd 2011

---

(2) Okuma line 2 L (0-82) Line Switch damaged



photo : TEPCO March 23rd 2011

---

(3) Okuma line 2 L (8 2) Line Switched damaged



photo : TEPCO March 23rd 2011