

(1) Ohkuma Line 3L, Ground wire (disconnected)



Photo : Tokyo Electric Power Company, March 12, 2011

(2) Ohkuma Line 3&4L, Steel structure for lead-in (tilted)



Photo : Tokyo Electric Power Company,
March 11, 2011

(3) Yonomori Line, Cable in substation (subsidence)

Yonomori Line 1L



Photo : Tokyo Electric Power Company,
March 12, 2011

Yonomori Line 2L



Photo : Tokyo Electric Power Company,
March 12, 2011

(4) Main transformer No.2 (oil leakage)



Photo : Tokyo Electric Power Company, March 12, 2011

(5) Main transformer No.4 : V-suspended insulator (damaged)



Photo : Tokyo Electric Power Company, March 12, 2011

(6) Circuit breaker O-24 (damaged)

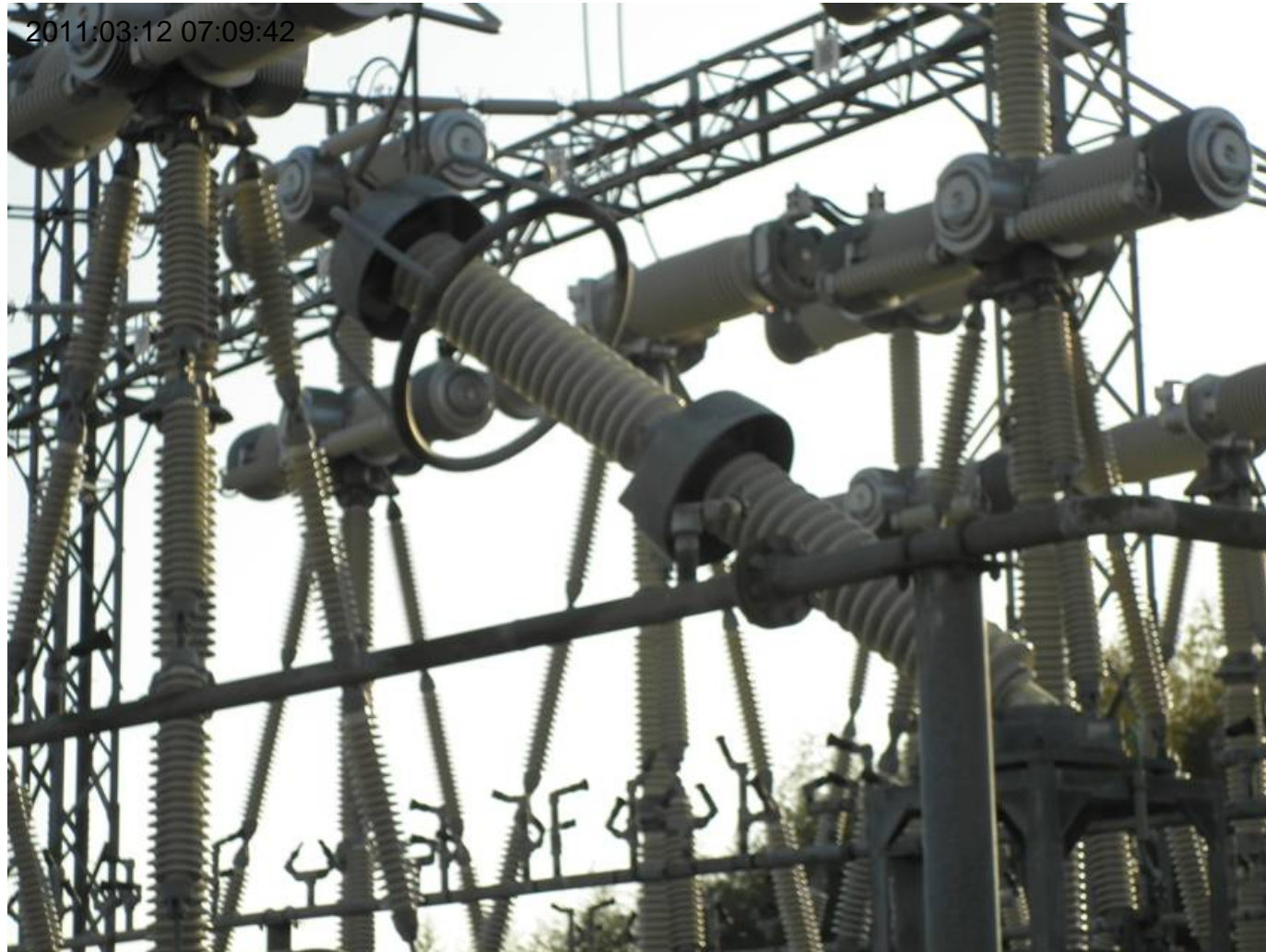


Photo : Tokyo Electric Power Company, March 12, 2011

(7) Circuit breaker O-41, Iwaki Main Line 1L (damaged)



Photo : Tokyo Electric Power Company, March 11, 2011

(8) Disconnecter 33, Ohkuma Line 3L (damaged)



Photo : Tokyo Electric Power Company, March 12, 2011

(9) Disconnecter 93, Yonomori Line 1L (damaged)



Photo : Tokyo Electric Power Company, March 12, 2011

(10) Disconnecter 94, Yonomori Line 2L (damaged)



Photo : Tokyo Electric Power Company, March 12, 2011

(1 1) Disconnecter 101 (damaged)



Photo : Tokyo Electric Power Company, March 12, 2011

(1 2) Disconnecter 113 (damaged)



Photo : Tokyo Electric Power Company, March 12, 2011

(1 3) Disconnecter 210 (damaged)



Photo : Tokyo Electric Power Company, March 12, 2011

(1 4) Disconnecter 242 (damaged)



Photo : Tokyo Electric Power Company, March 12, 2011

(15) Disconnecter S200 (damaged)



Photo : Tokyo Electric Power Company, March 11, 2011

(16) Potential transformer, Ohkuma Line 1L (tilted)



Photo : Tokyo Electric Power Company, March 12, 2011

(17) Current transformer, 500kV Section bus (damaged)



Photo : Tokyo Electric Power Company, March 12, 2011

(1 8) Lighting arrester, Iwaido Line 2L (bus side) (damaged)



Photo : Tokyo Electric Power Company, March 12, 2011