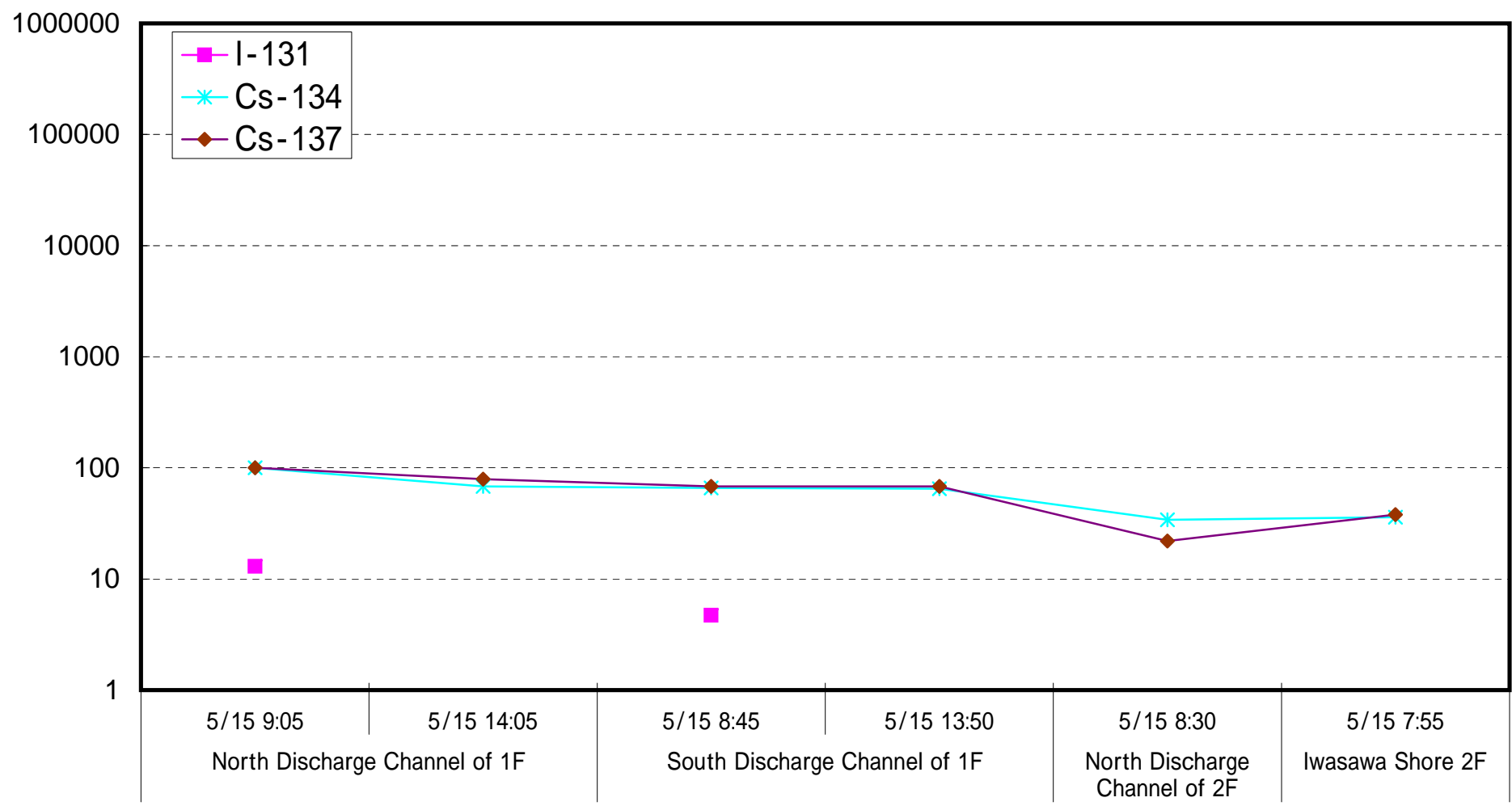
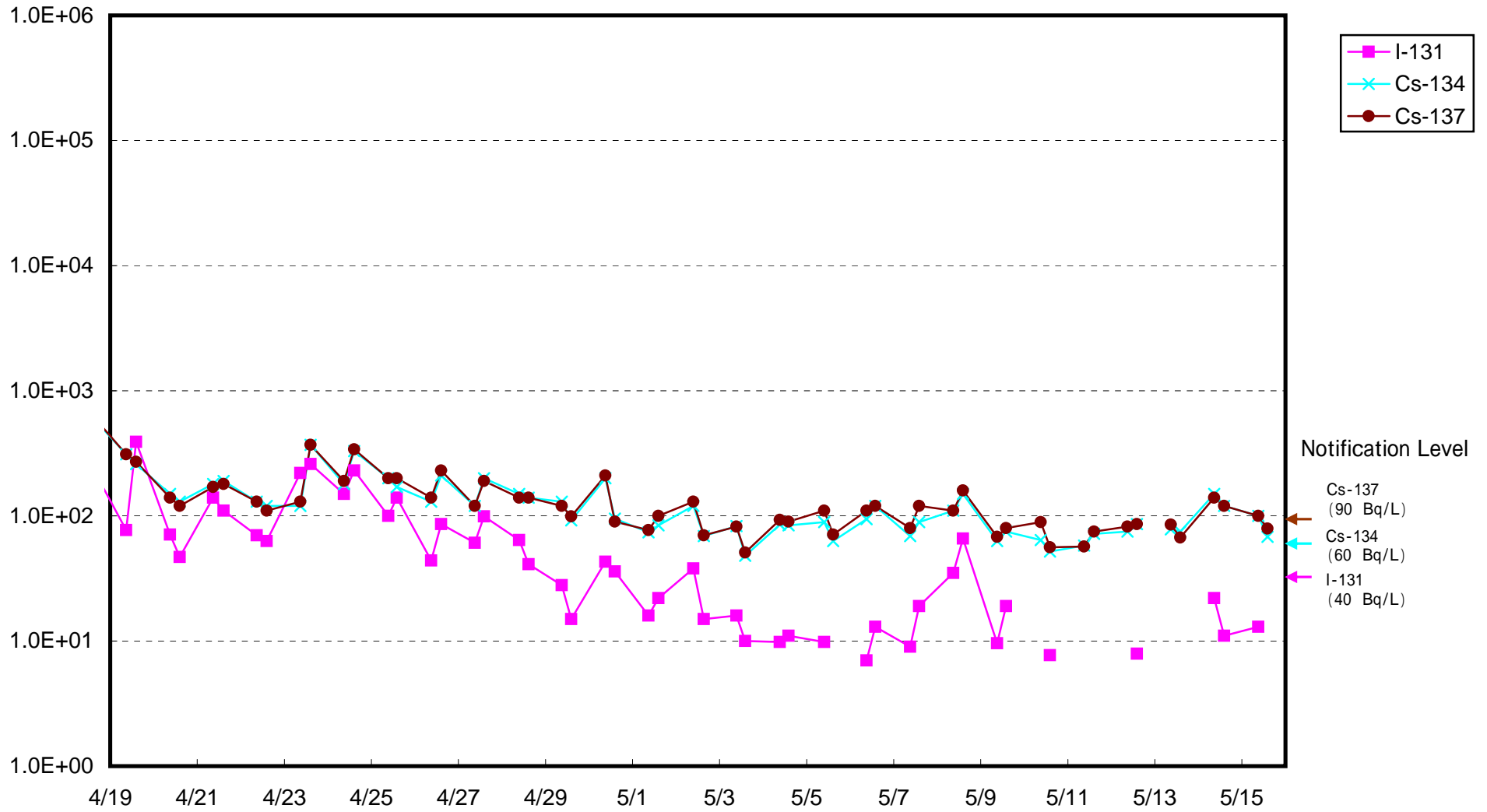


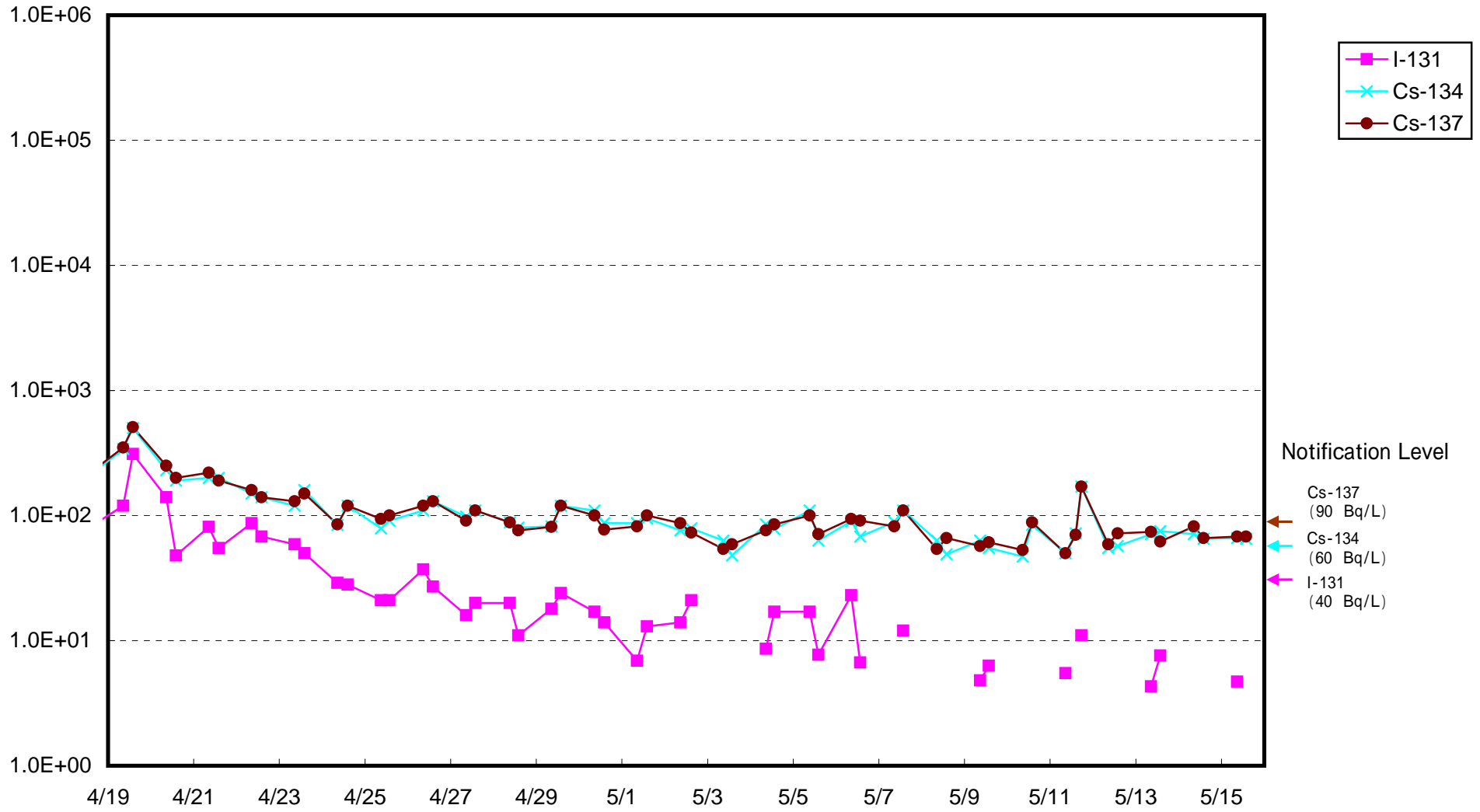
Radioactive Density of Seawater (Bq/cm³)



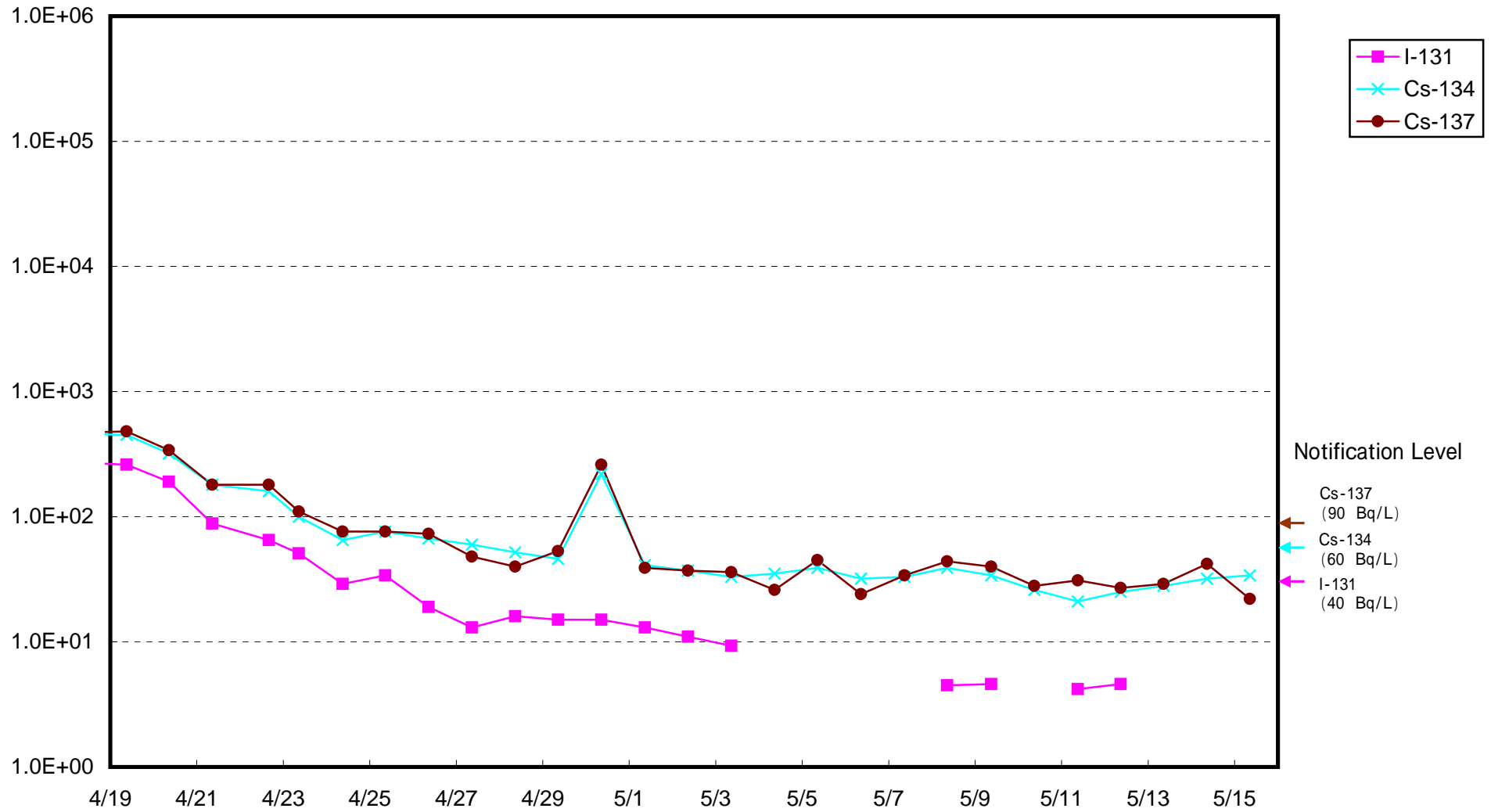
Radioactivity Density of Seawater at North of 1F5-6 Discharge Channel (approx.30m north of 5-6 discharge channel)
(Bq/L)



Radioactivity Density of Seawater at South Discharge Channel of 1F (Bq/L)



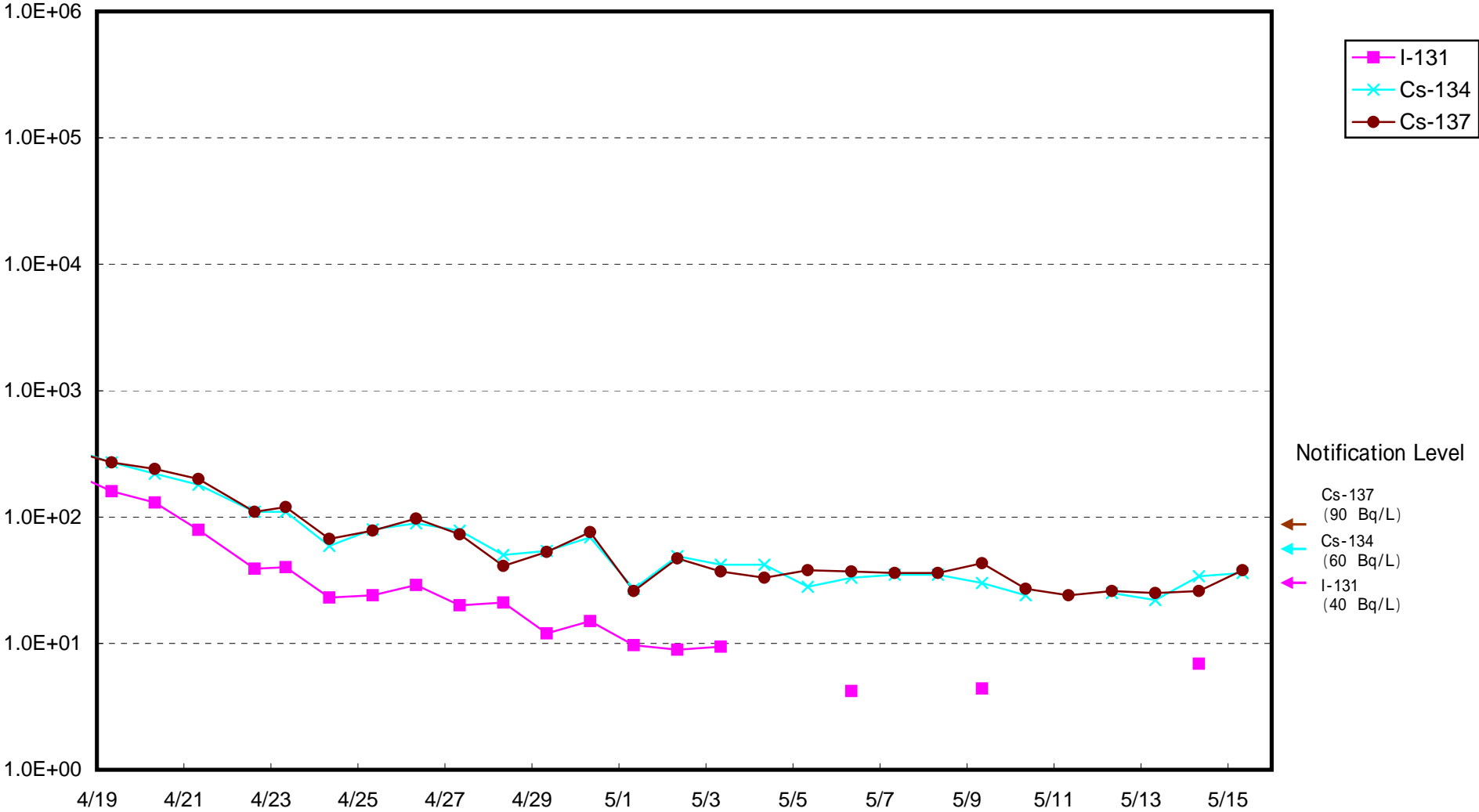
Radioactivity Density of Seawater at North Discharge Channel of 2F (Bq/L)



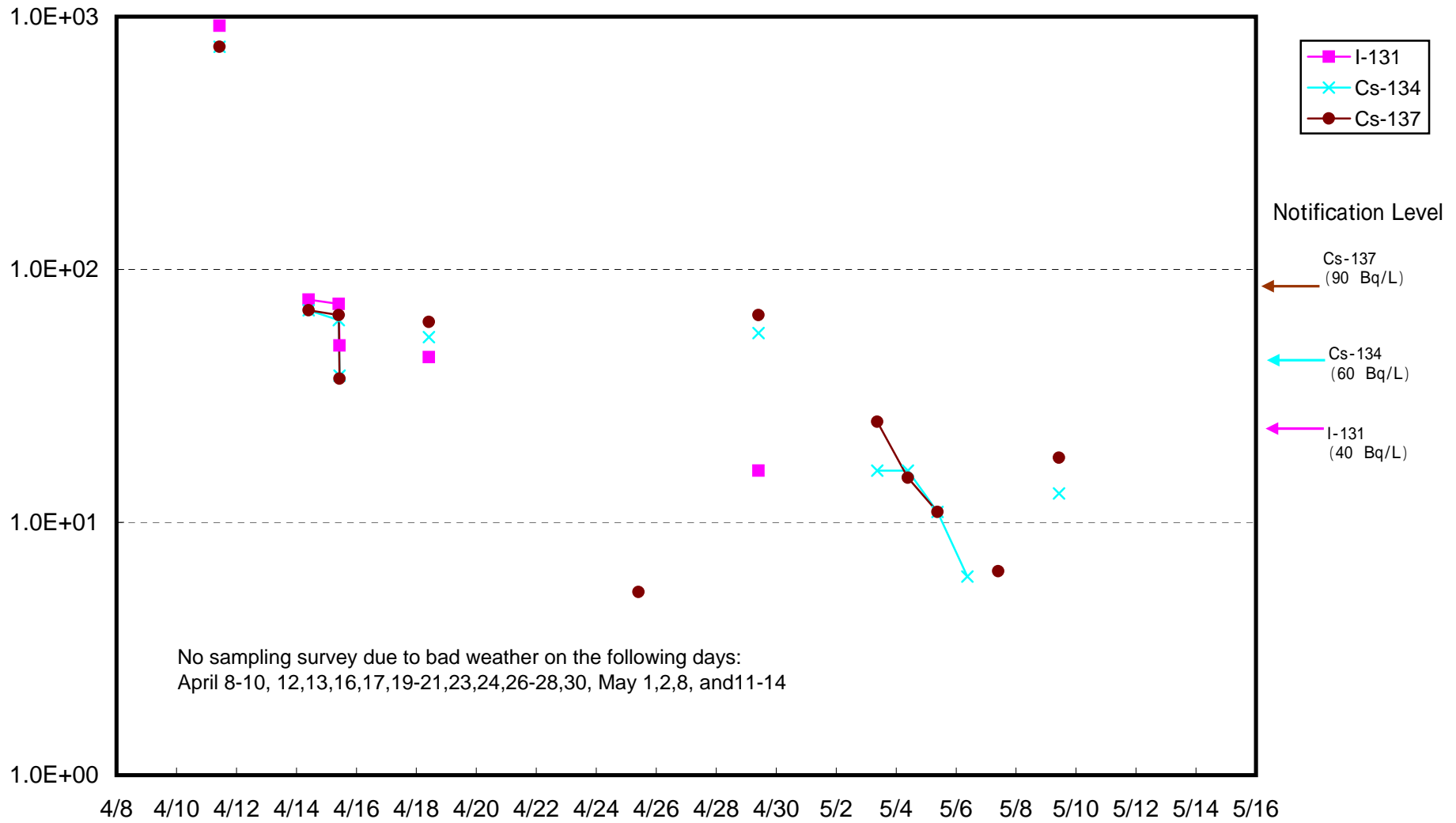
Notification Level

- Cs-137 (90 Bq/L)
- Cs-134 (60 Bq/L)
- I-131 (40 Bq/L)

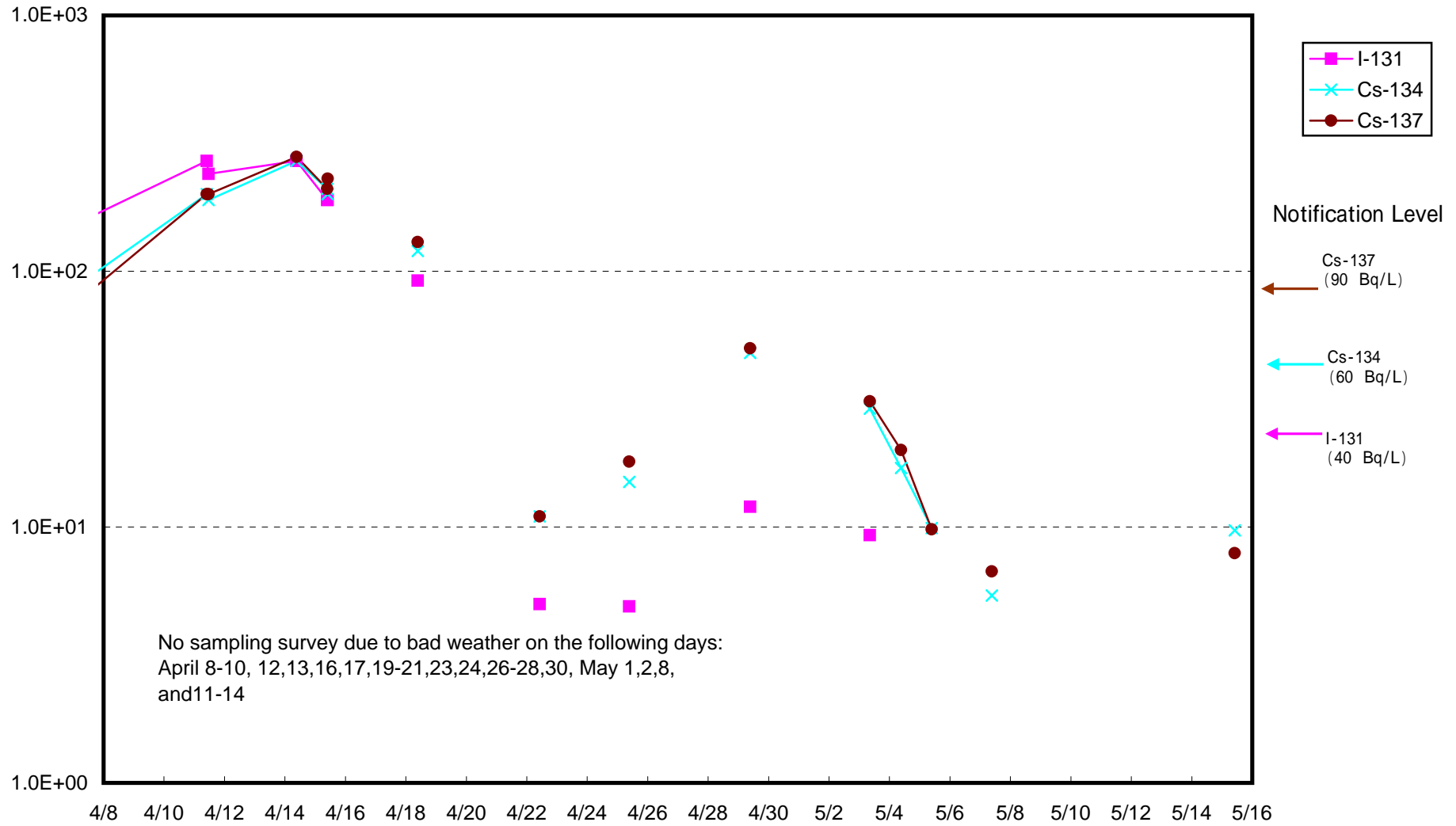
Radioactivity Density of Seawater at Iwasawa Shore 2F (Bq/L)



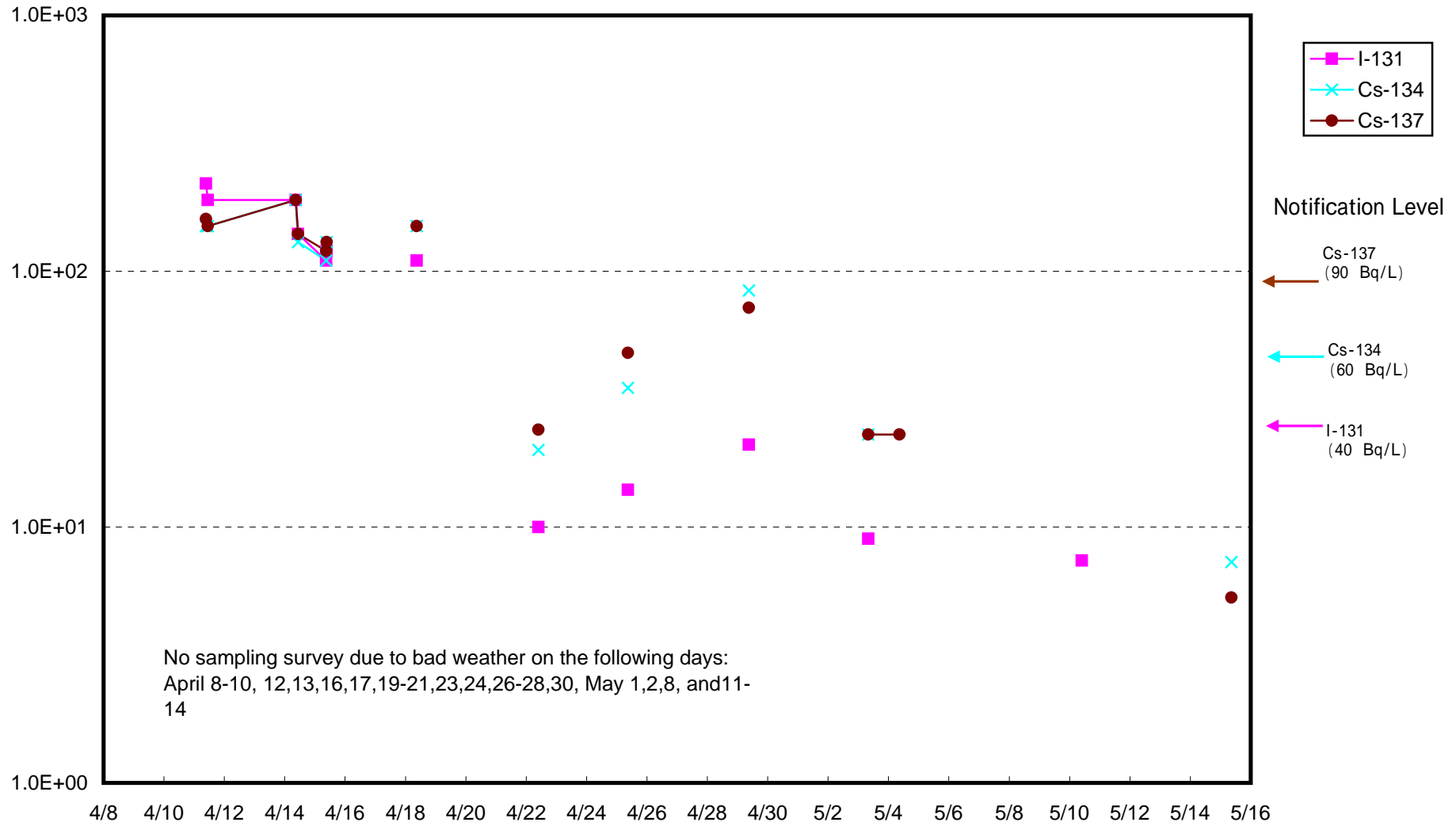
Radioactivity Density of Seawater around approx. 15 km offshore of Minamisouma City (Bq/L)



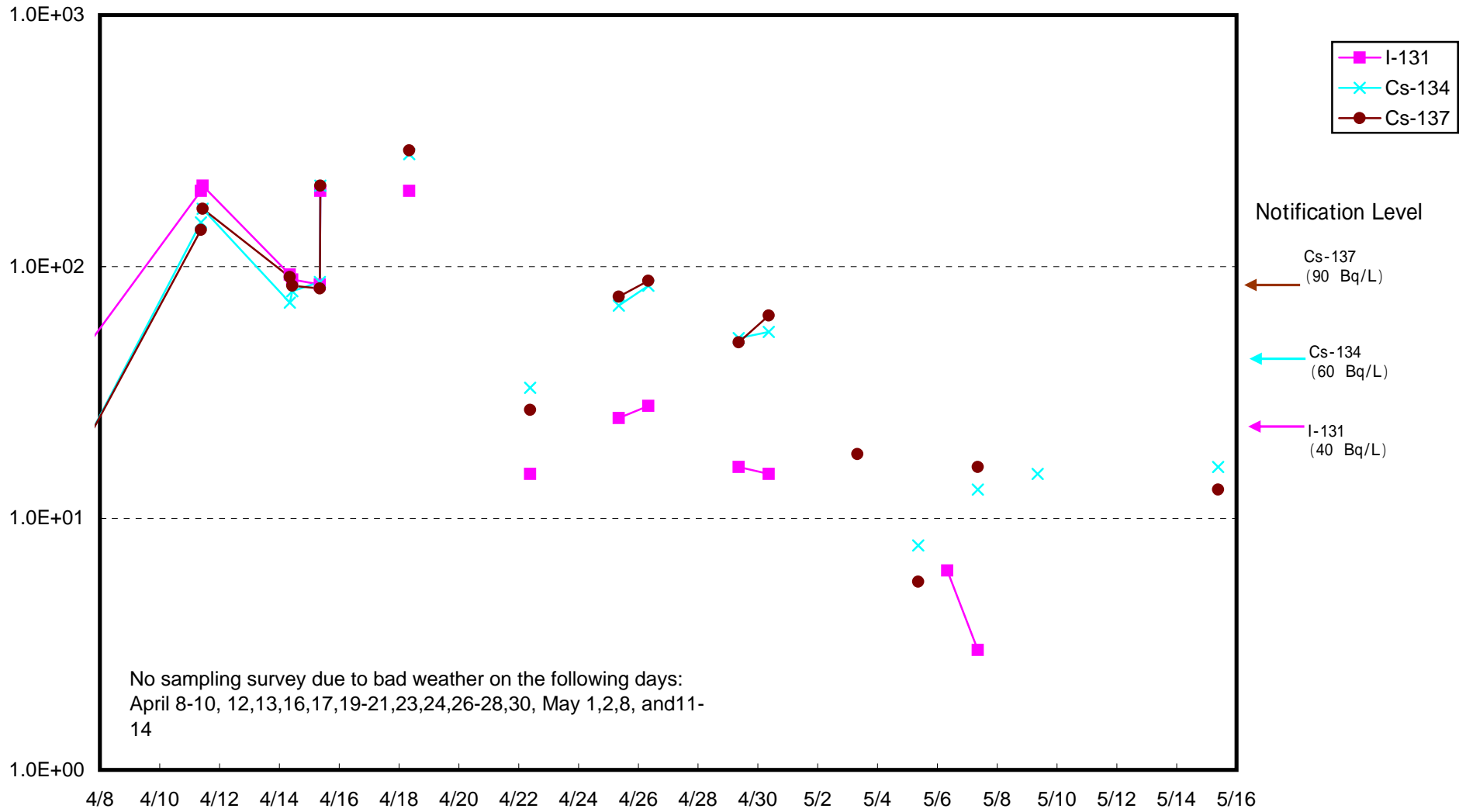
Radioactivity Density of Seawater around approx. 15 km offshore of Ukedo-gawa (Bq/L)



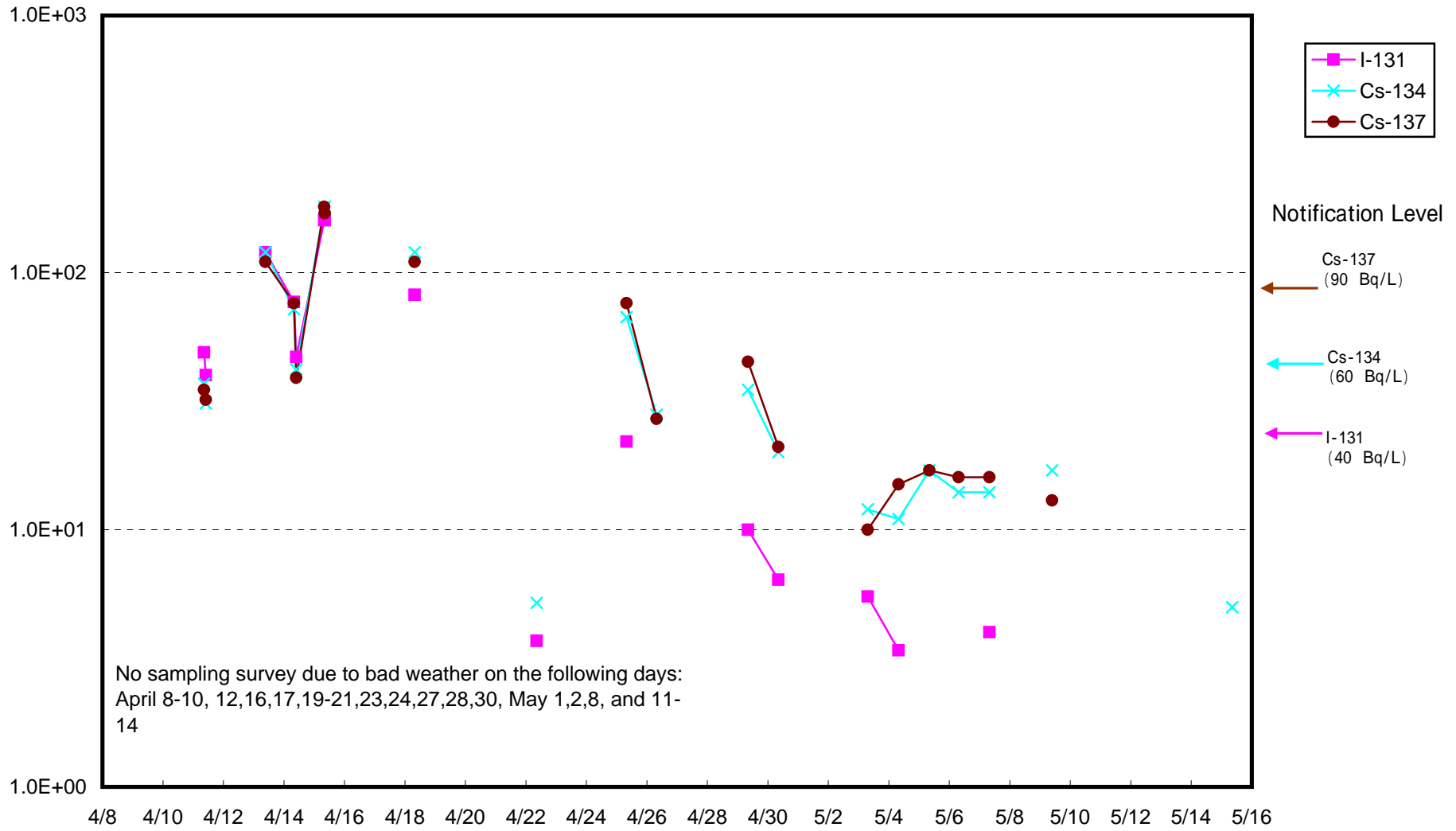
Radioactivity Density of Seawater around approx. 15 km offshore of Fukushima Daiichi (Bq/L)



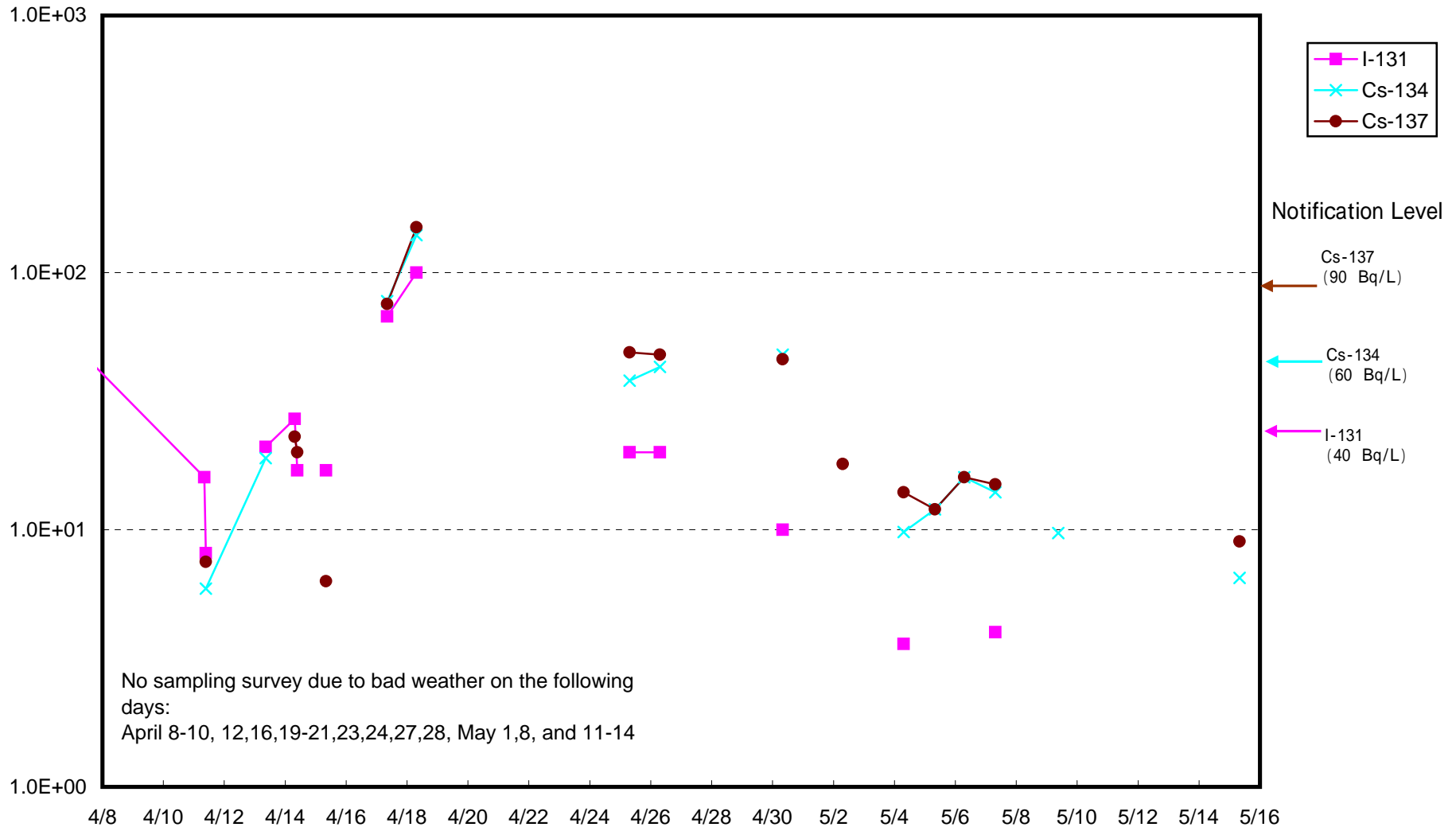
Radioactivity Density of Seawater around approx. 15 km offshore of Fukushima Daini (Bq/L)



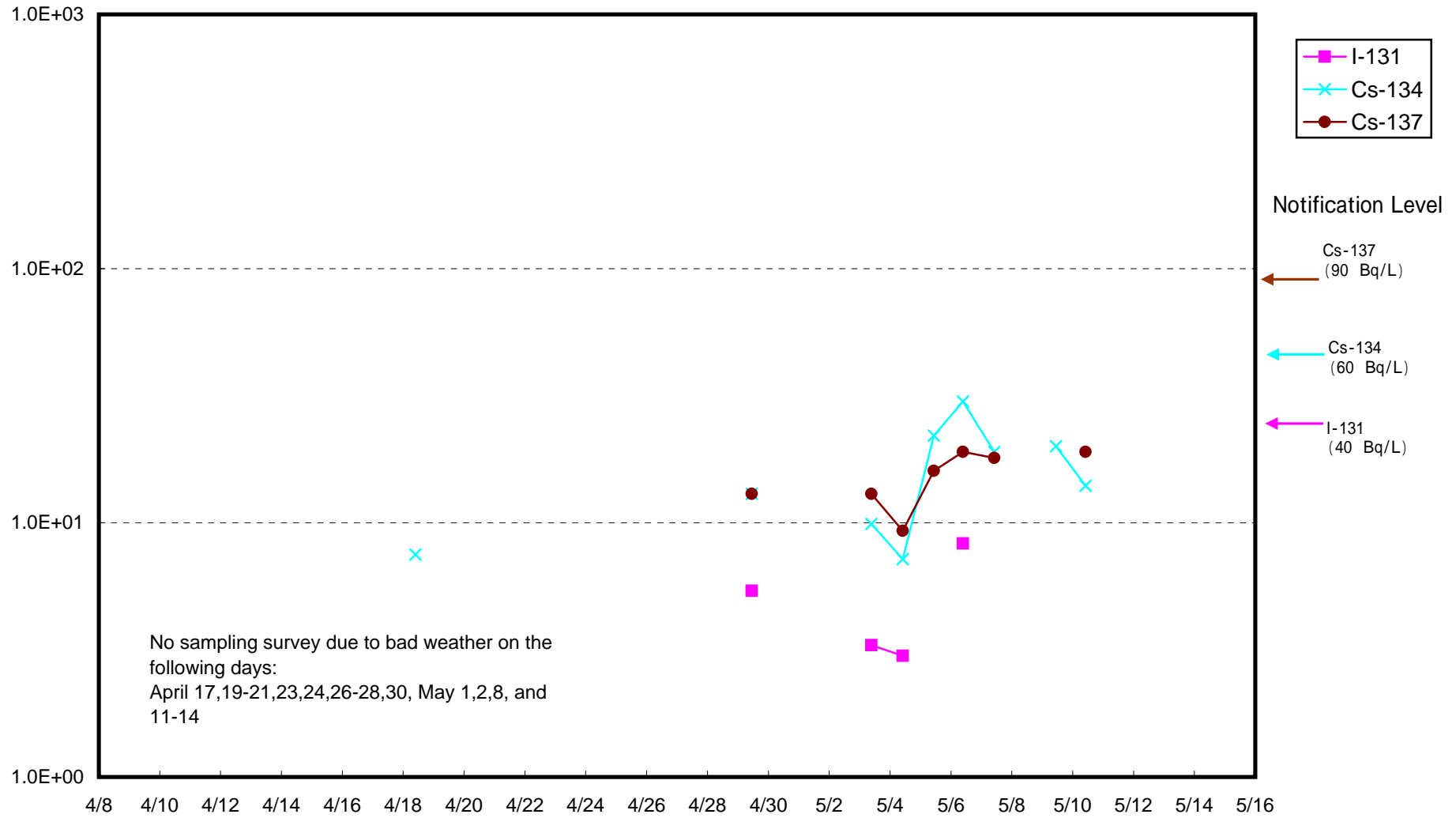
Radioactivity Density of Seawater around approx. 15 km offshore Iwasawa Shore (Bq/L)



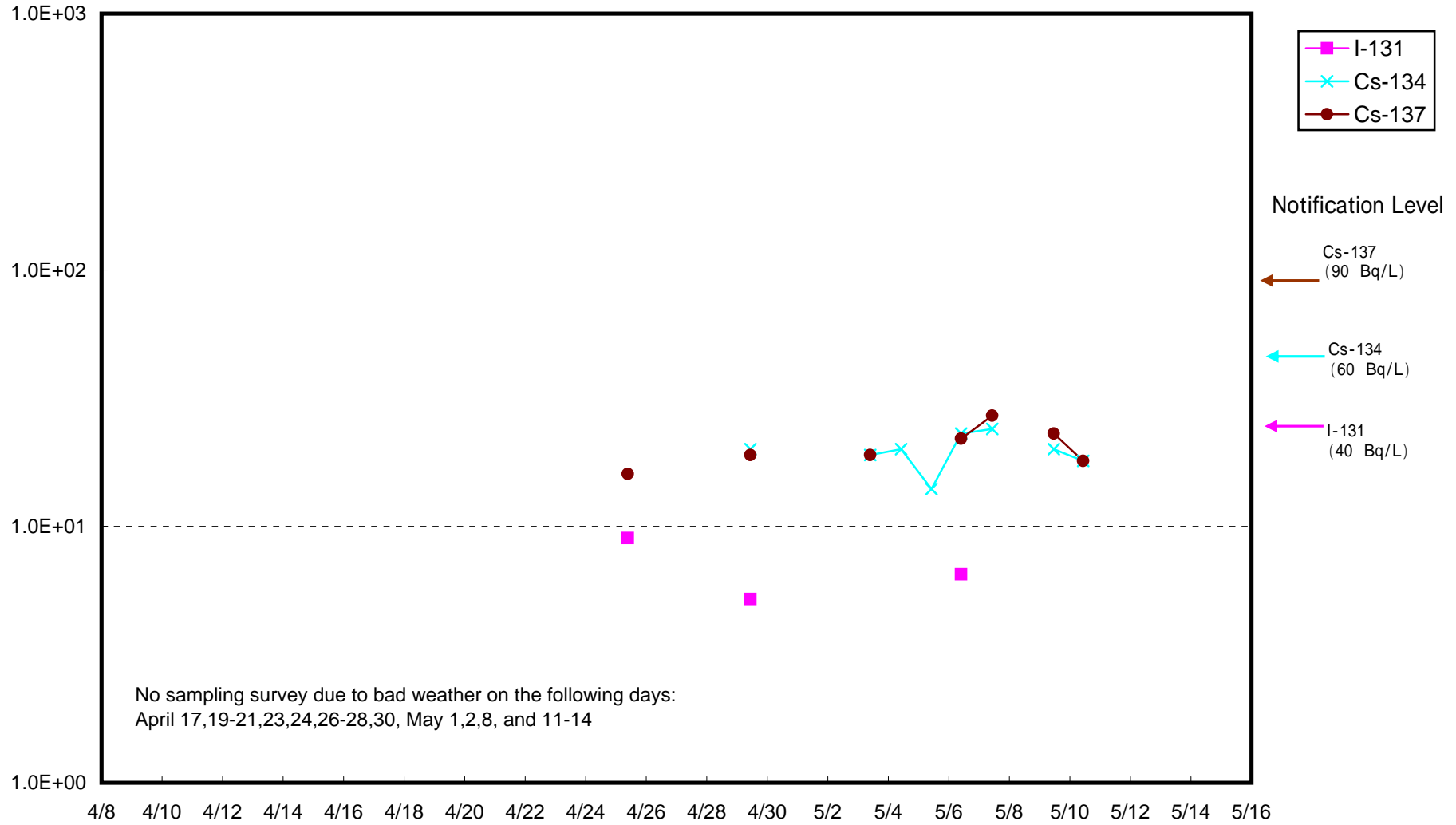
Radioactivity Density of Seawater around approx. 15 km offshore of Hirono-machi (Bq/L)



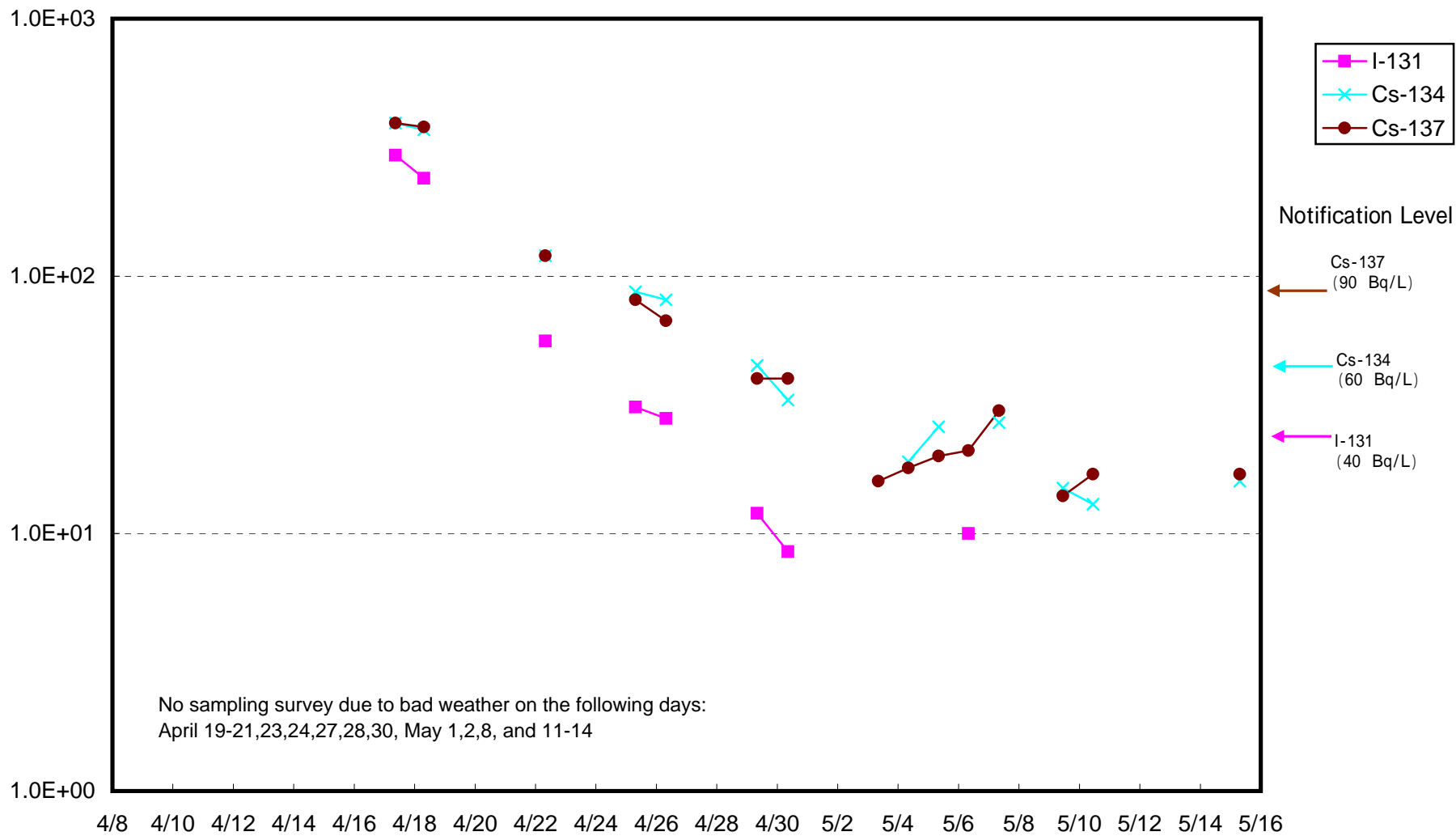
Radioactivity Density of Seawater around 3 km offshore of Haramachi-ku (Bq/L)
(Upper layer)



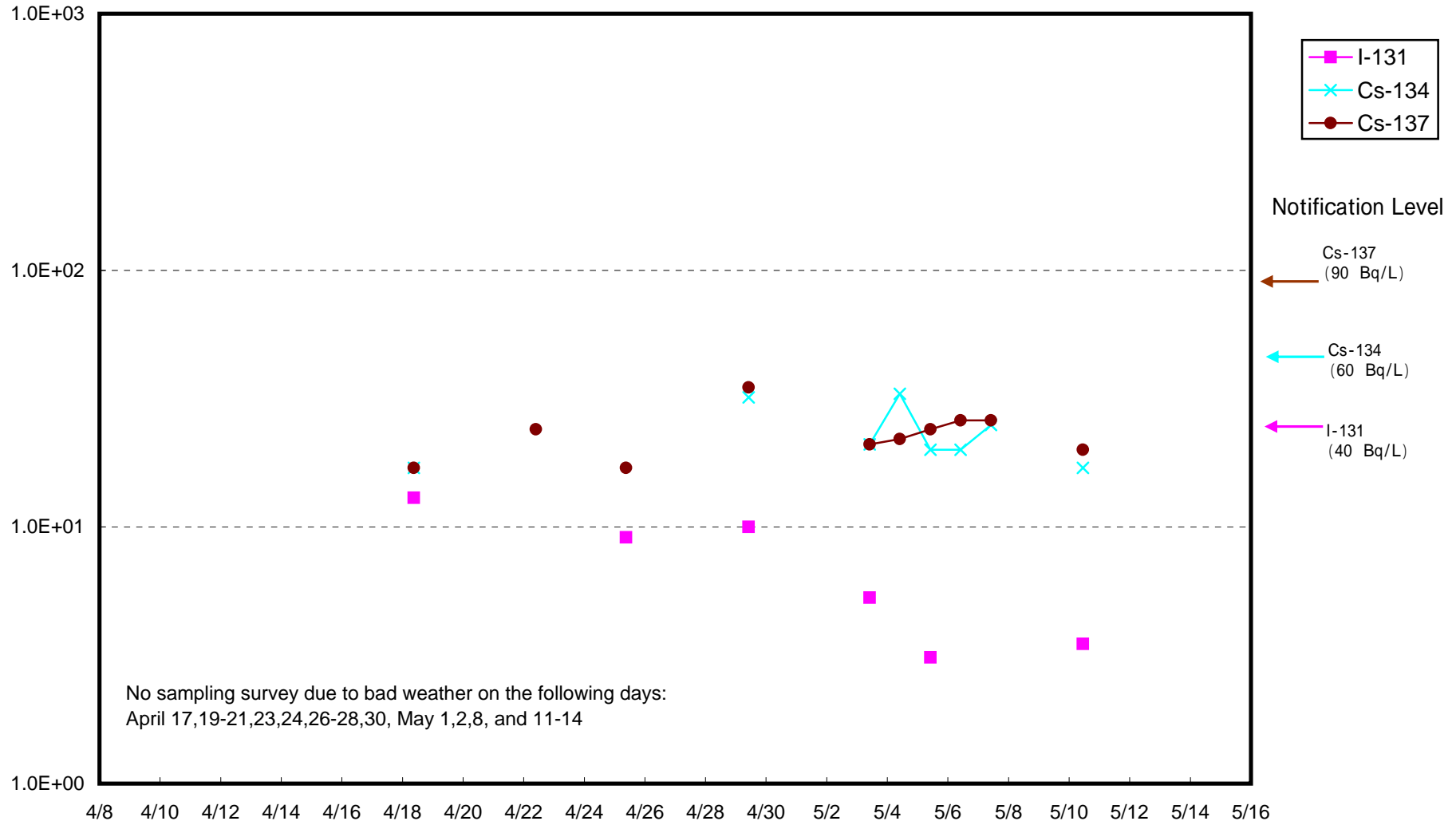
Radioactivity Density of Seawater around 3 km offshore of Odaka-ku (Bq/L)
(Upper layer)



Radioactivity Density of Seawater around 3 km offshore of Iwasawa Shore (Bq/L)
(Upper layer)



Radioactivity Density of Seawater around 8 km offshore of Odaka-ku (Bq/L)
(Upper layer)



Radioactivity Density of Seawater around 8 km offshore of Iwasawa Shore (Bq/L)
(Upper layer)

