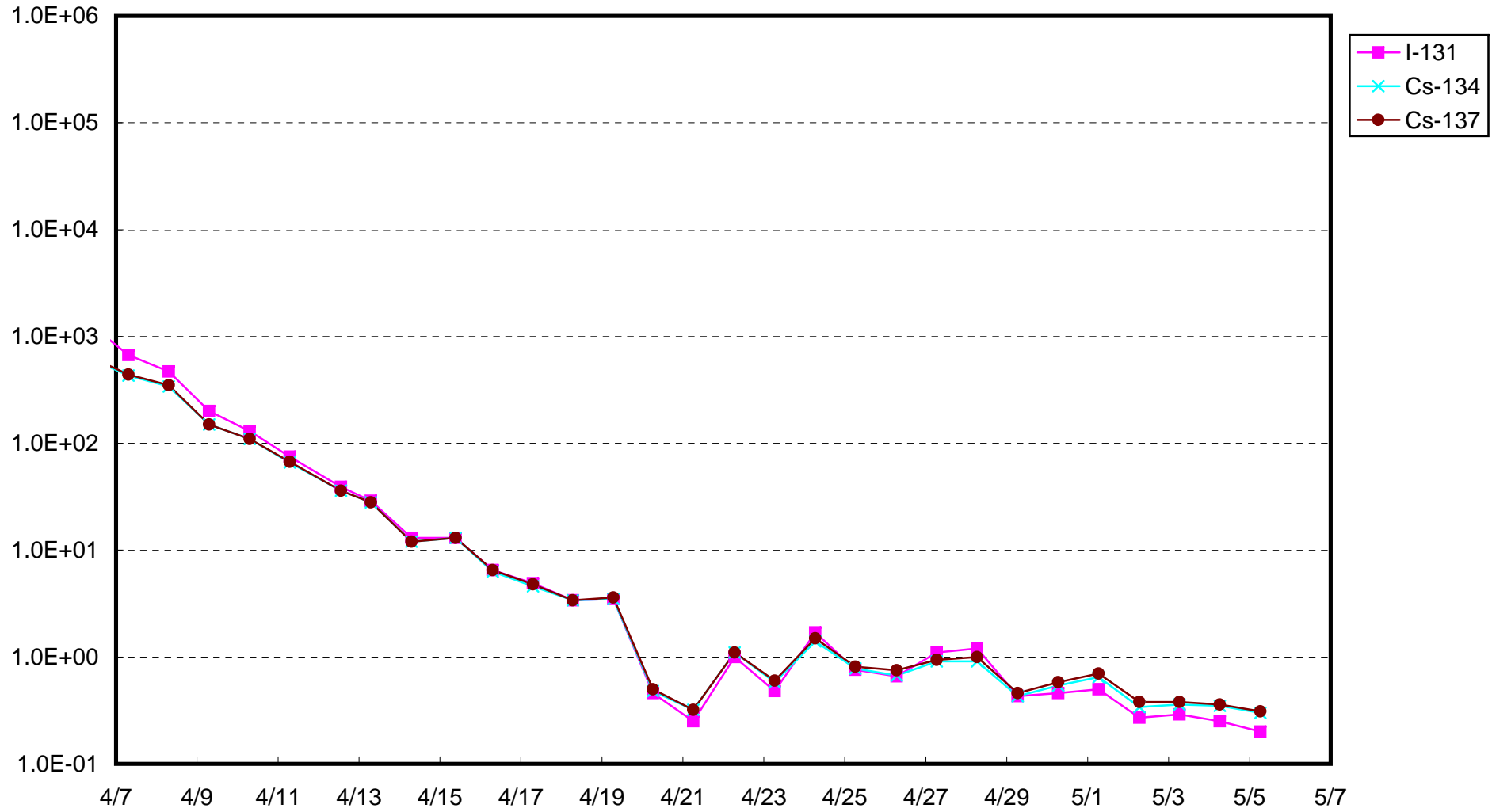
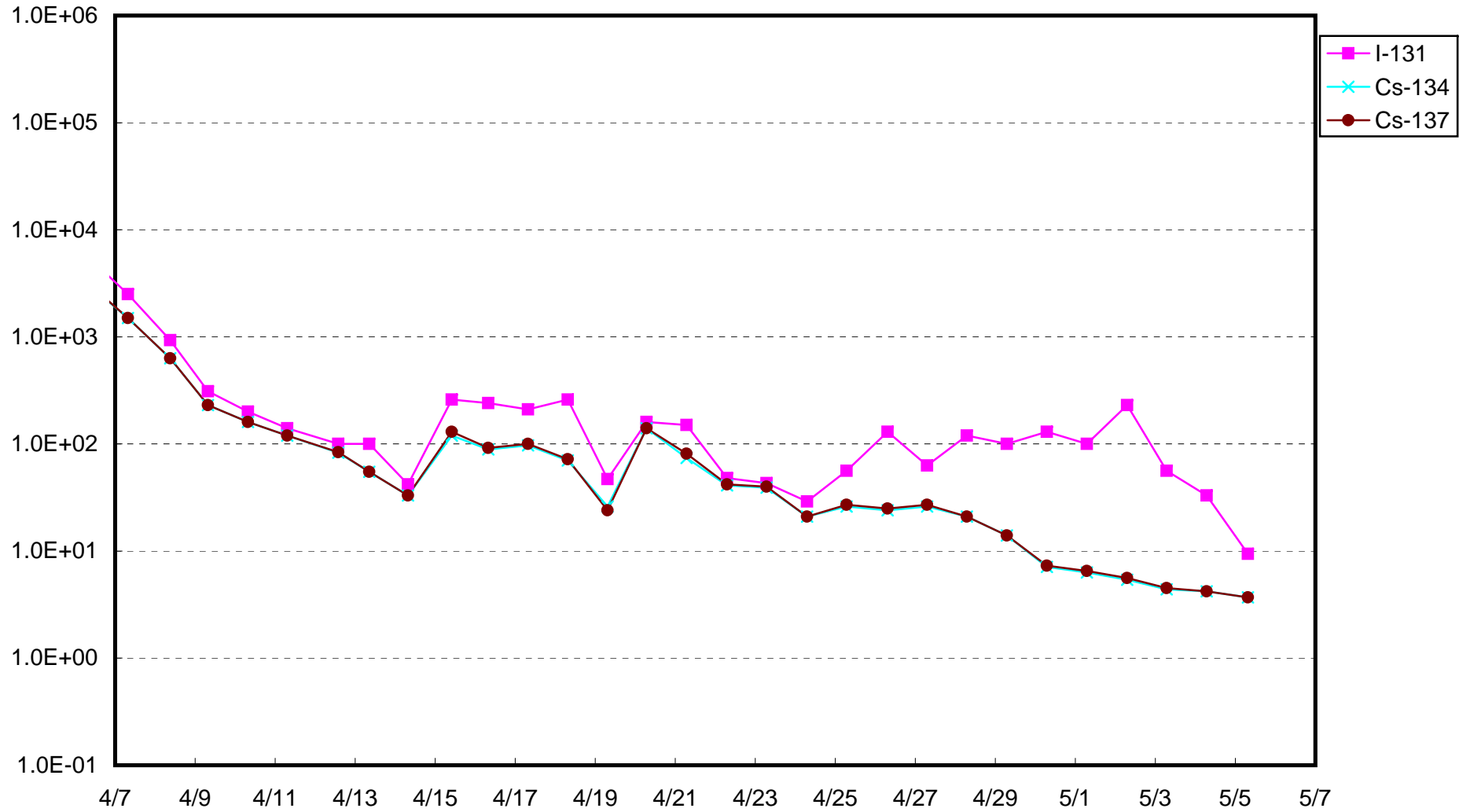


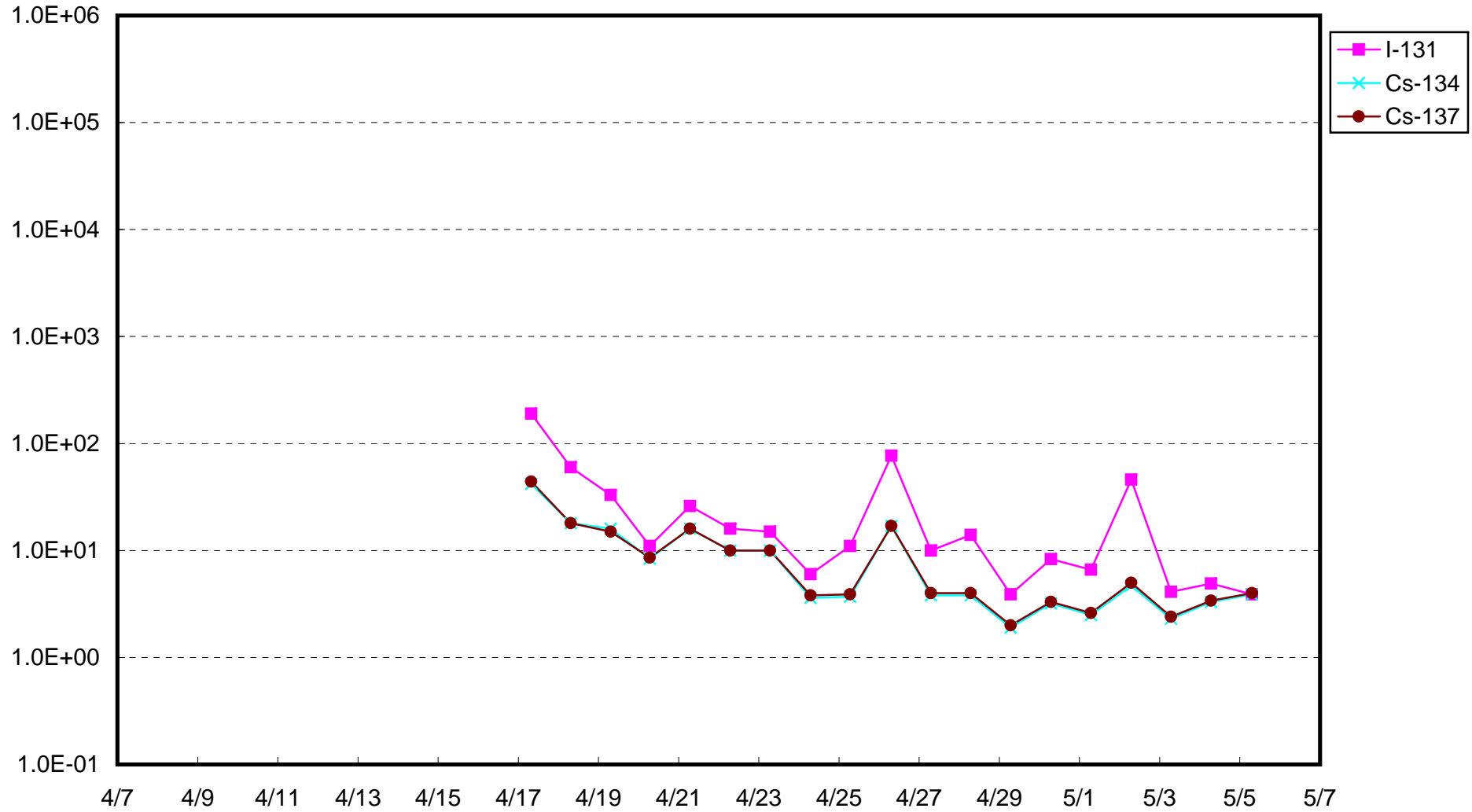
Radioactivity density of seawater at Shallow Draft Quay of Fukushima Daiichi NPS (Bq / cm<sup>3</sup>)



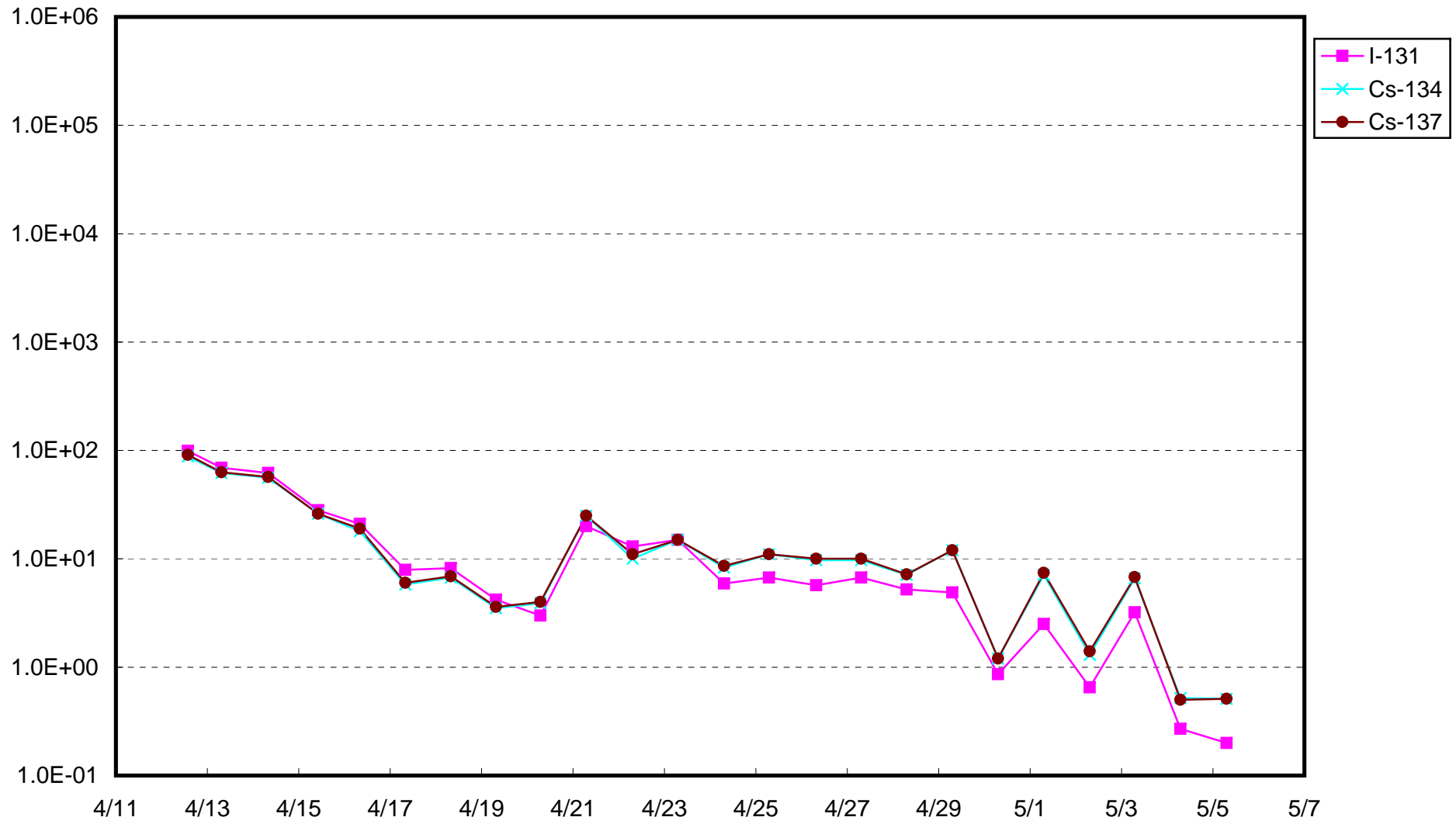
Radioactivity density of seawater around the bar screen of Unit2 of Fukushima Daiichi NPS (inside of the silt fence)  
(Bq / cm<sup>3</sup>)



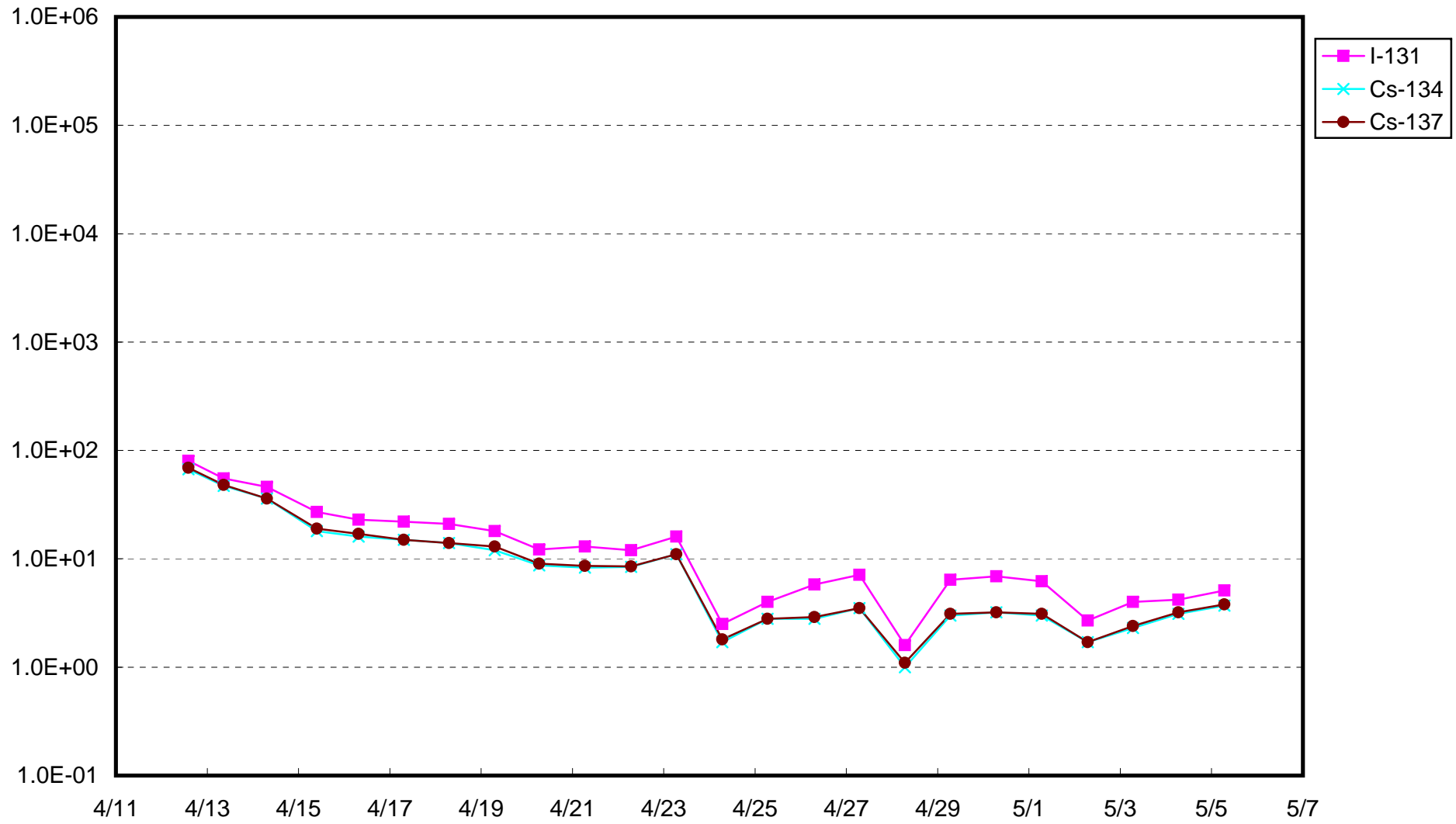
Radioactivity density of seawater around the bar screen of Unit 2 of Fukushima Daiichi NPS (outside of the silt fence)  
( Bq / cm<sup>3</sup> )



Radioactivity density of seawater at the south of Units 1-4 water intake of Fukushima Daiichi NPS (Bq / cm<sup>3</sup>)



Radioactivity density of seawater at the north of Units 1-4 water intake of Fukushima Daiichi NPS (Bq / cm<sup>3</sup>)



Fukushima Daini Nuclear Power Station: Radioactivity density of seawater at around the bar screen of 1F Unit 2  
(inside of the silt fence)(Bq/cm<sup>3</sup>)

