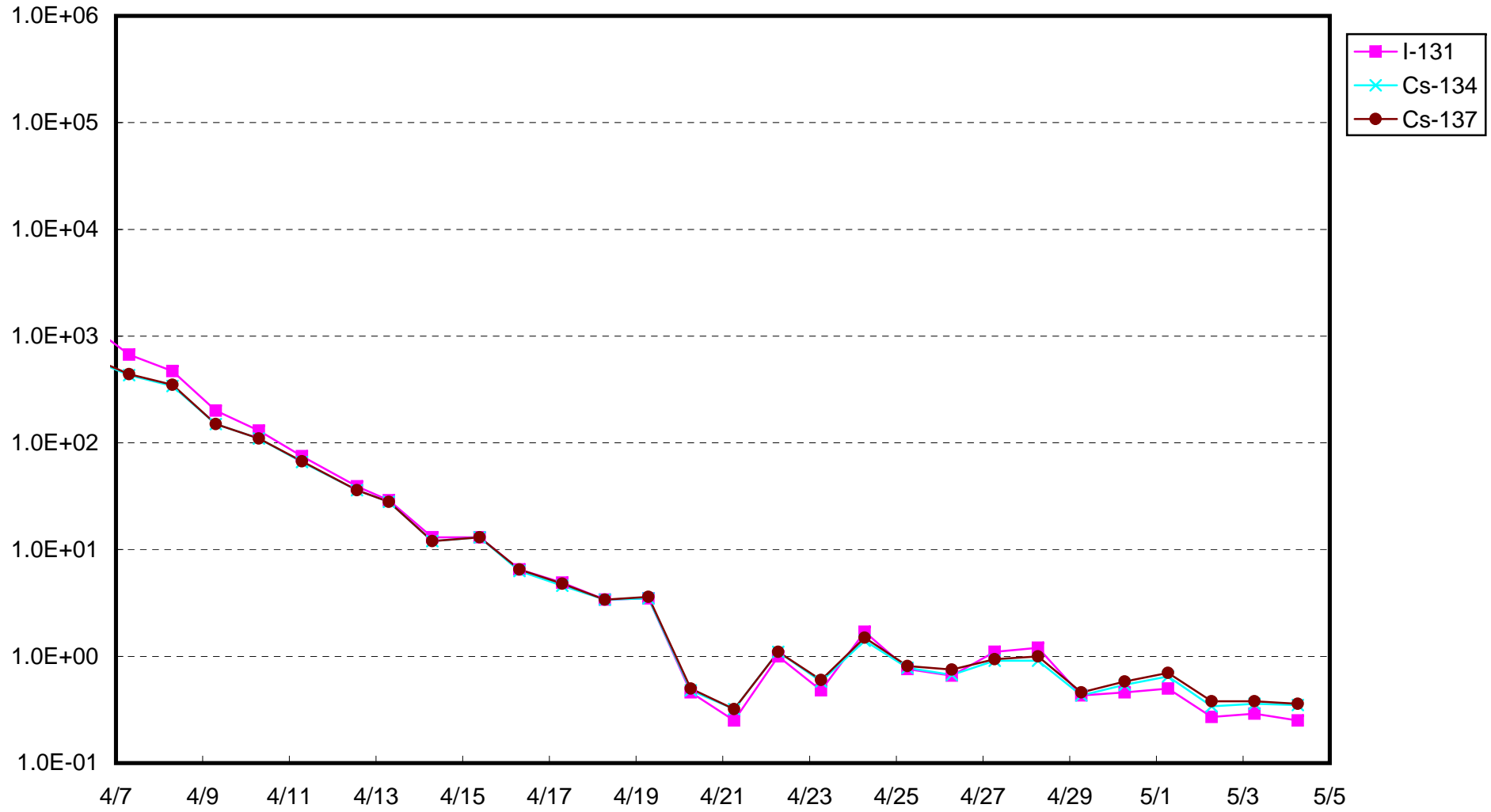
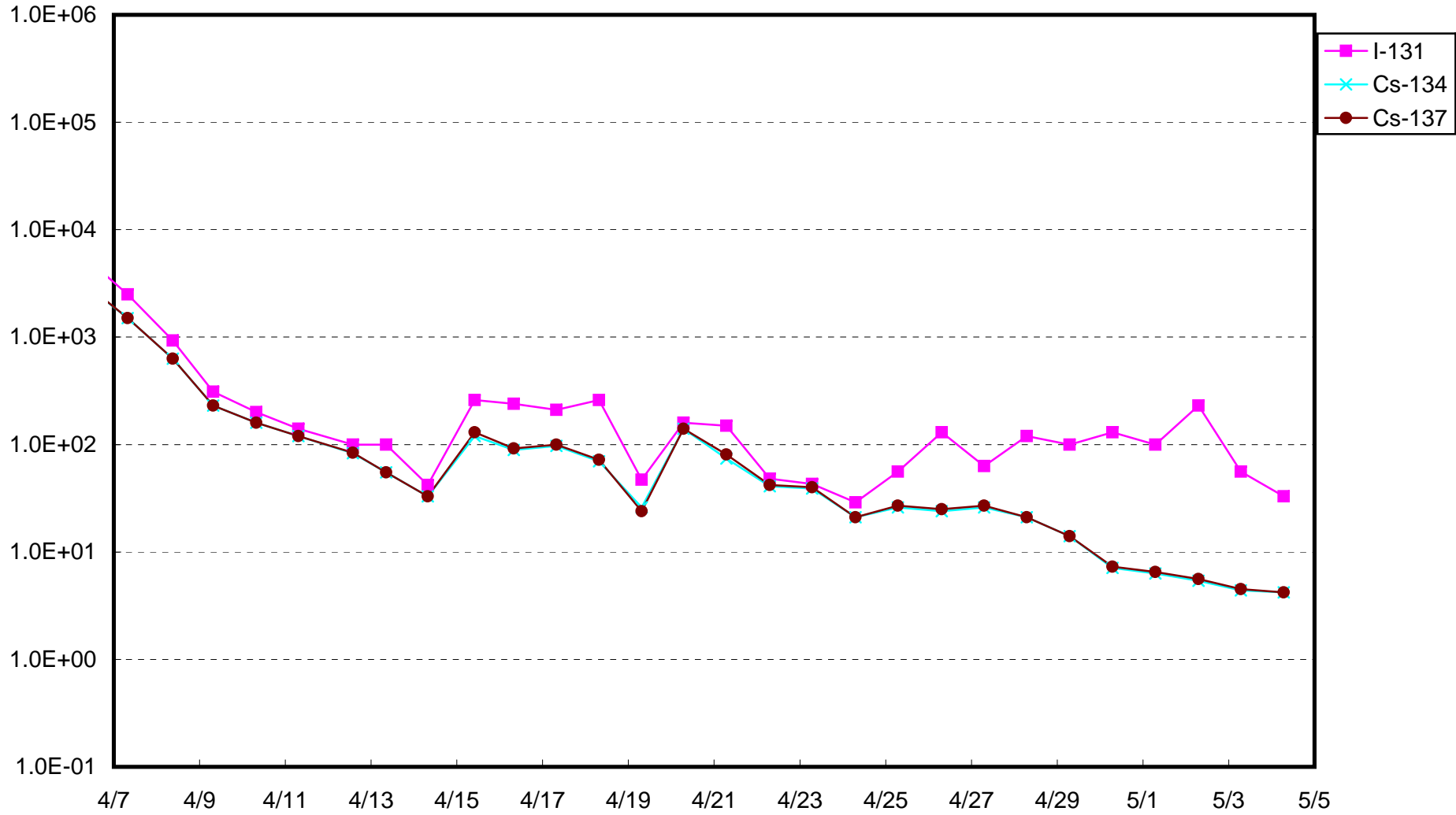


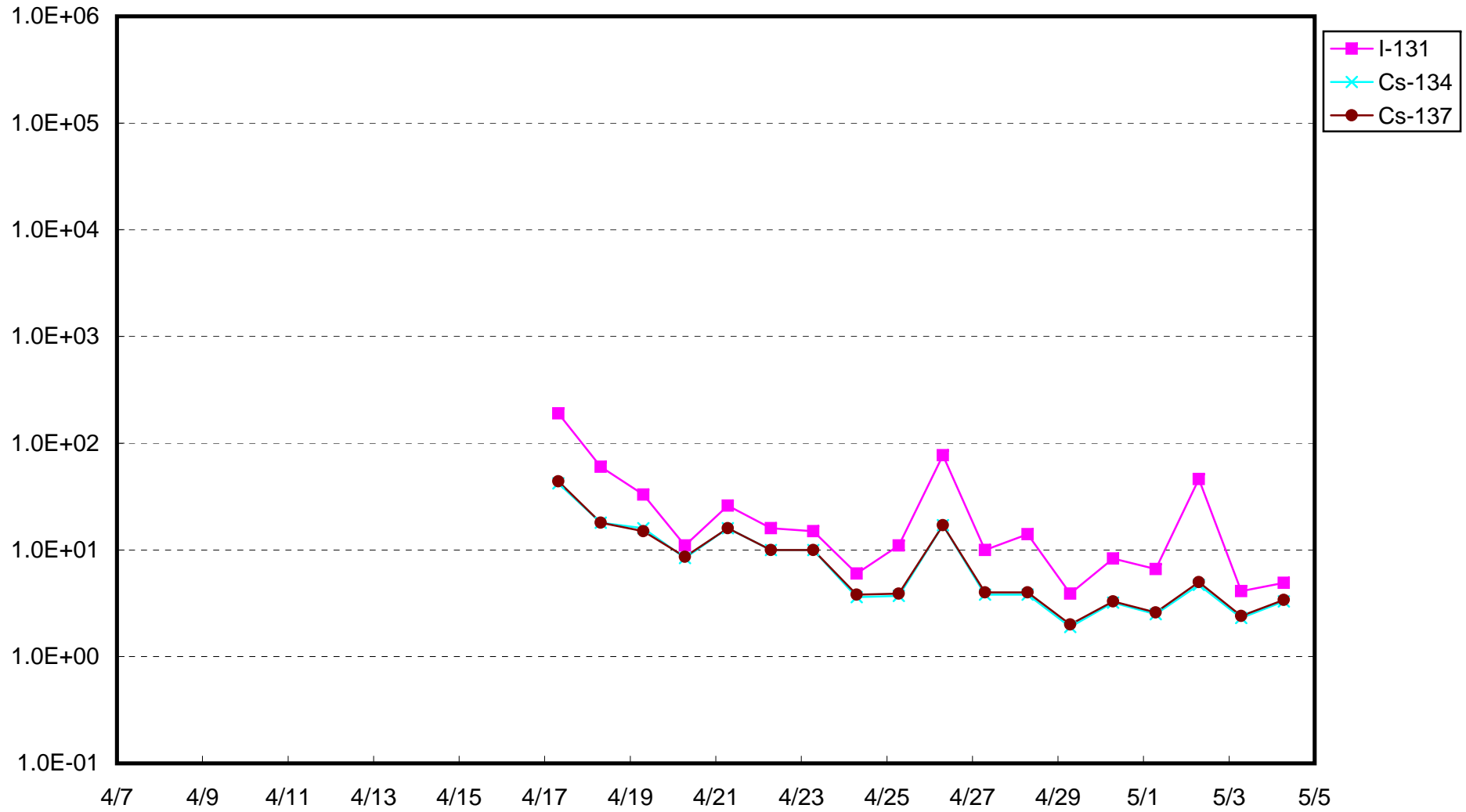
Radioactivity density of seawater at Shallow Draft Quay of Fukushima Daiichi NPS(Bq/cm<sup>3</sup>)



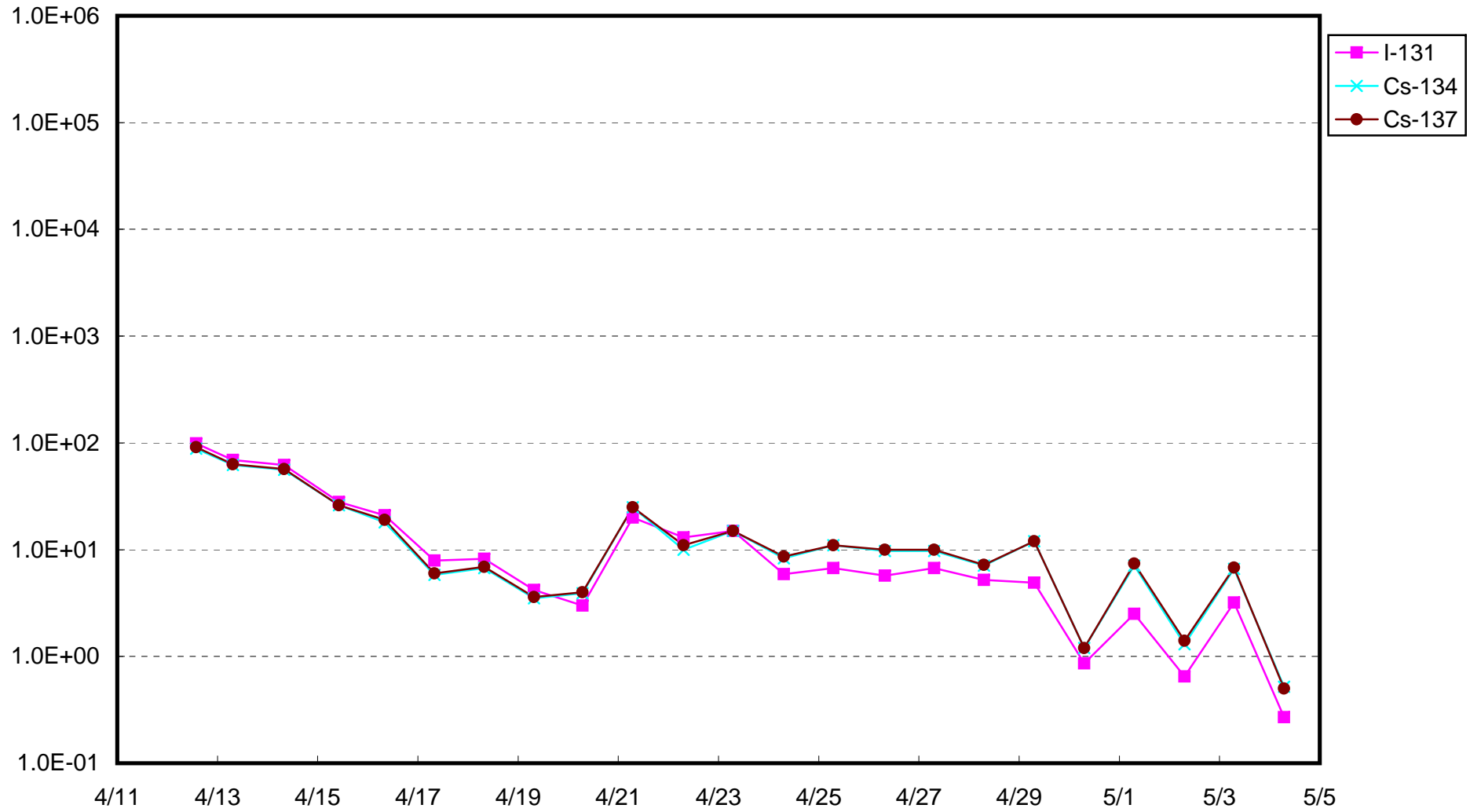
Radioactivity density of seawater around the bar screen of Unit2 of Fukushima Daiichi NPS  
(inside of the silt fence) (Bq/cm<sup>3</sup>)



Radioactivity density of seawater around the bar screen of Unit2 of Fukushima Daiichi NPS  
(outside of the silt fence) (Bq/cm<sup>3</sup>)



Radioactivity density of seawater at the south of Units 1-4 water intake of Fukushima Daiichi NPS (Bq/cm<sup>3</sup>)



Radioactivity density of seawater at the north of Units 1-4 water intake of Fukushima Daiichi NPS (Bq/cm<sup>3</sup>)

