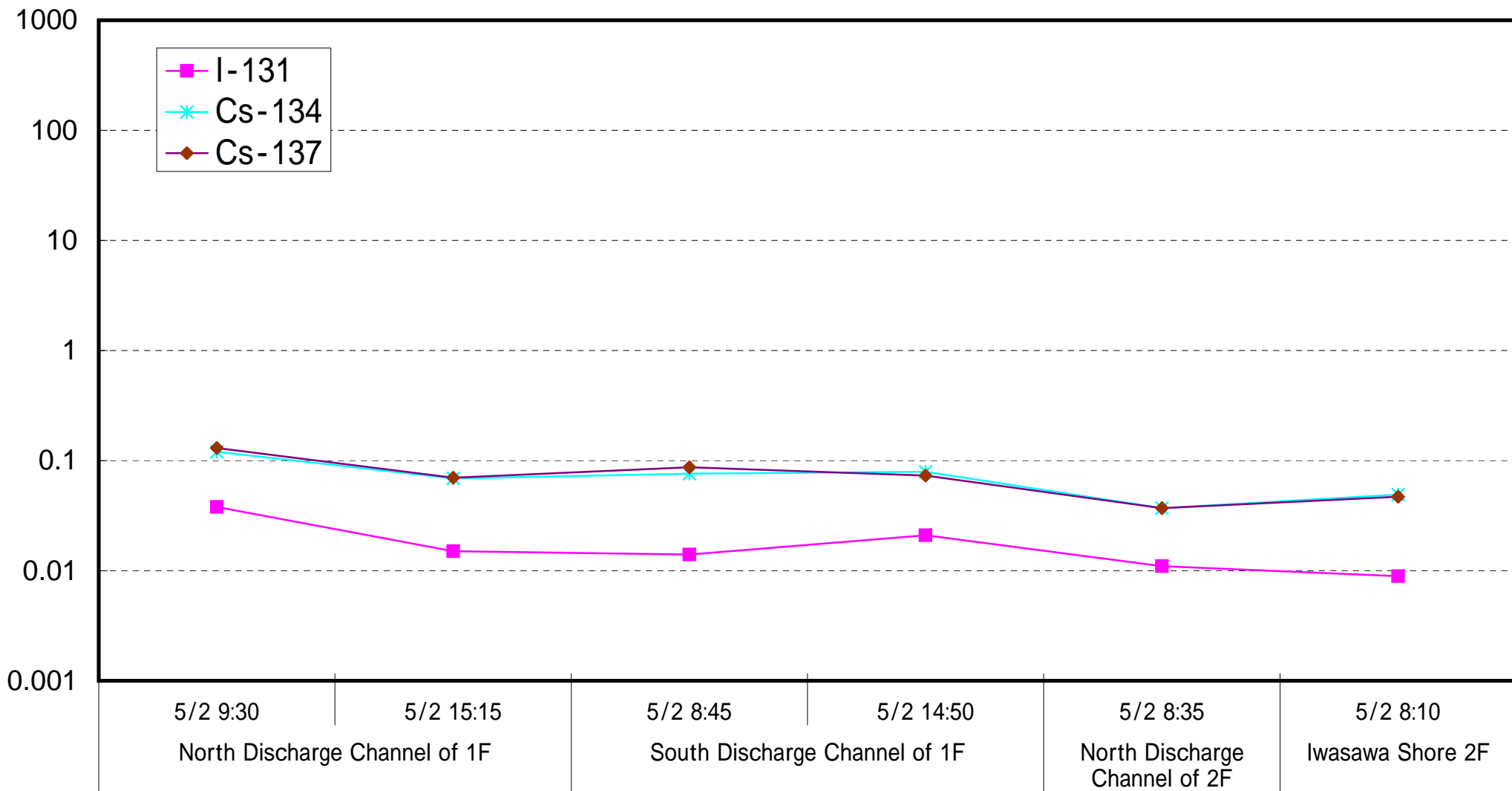
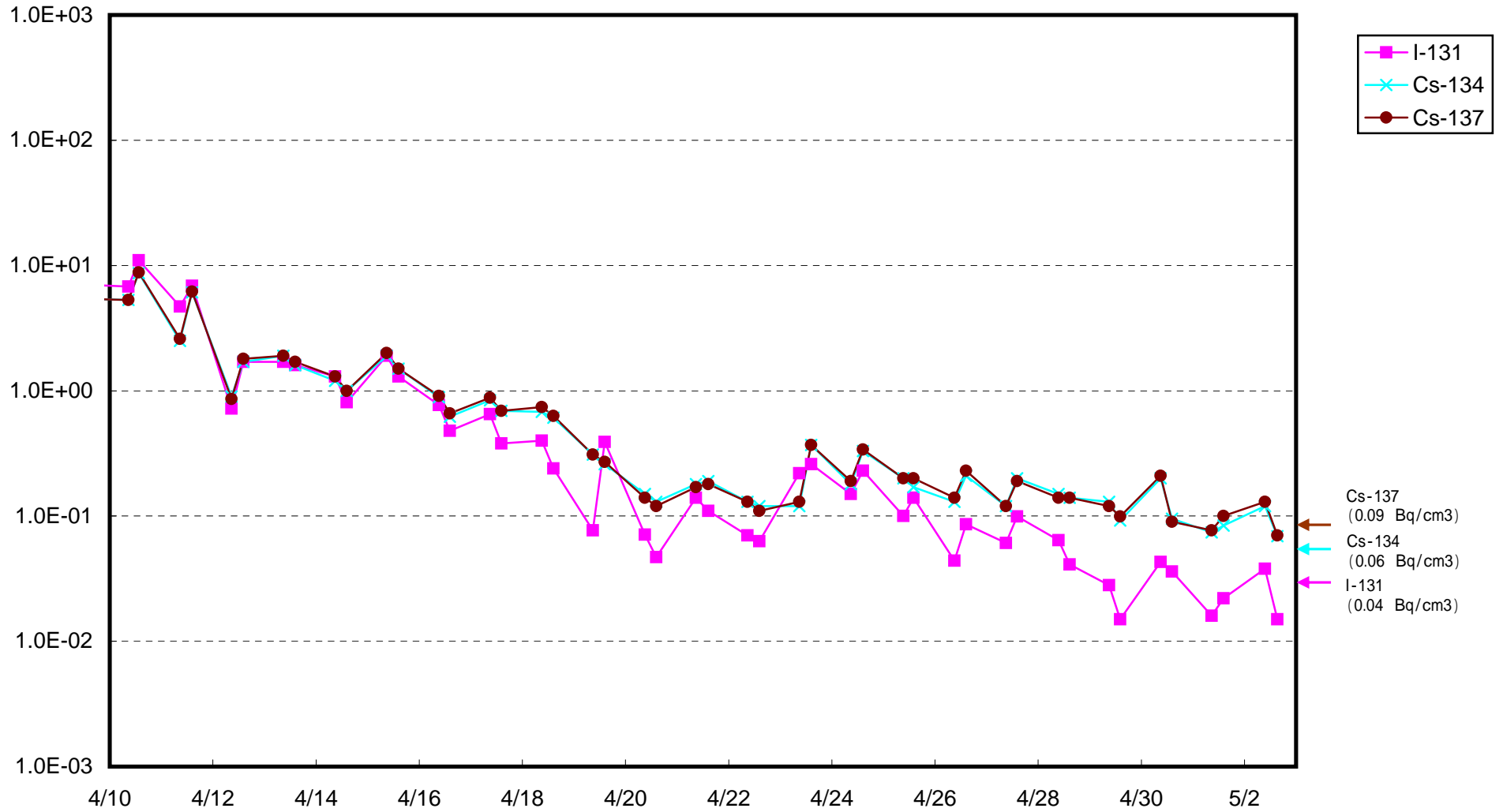


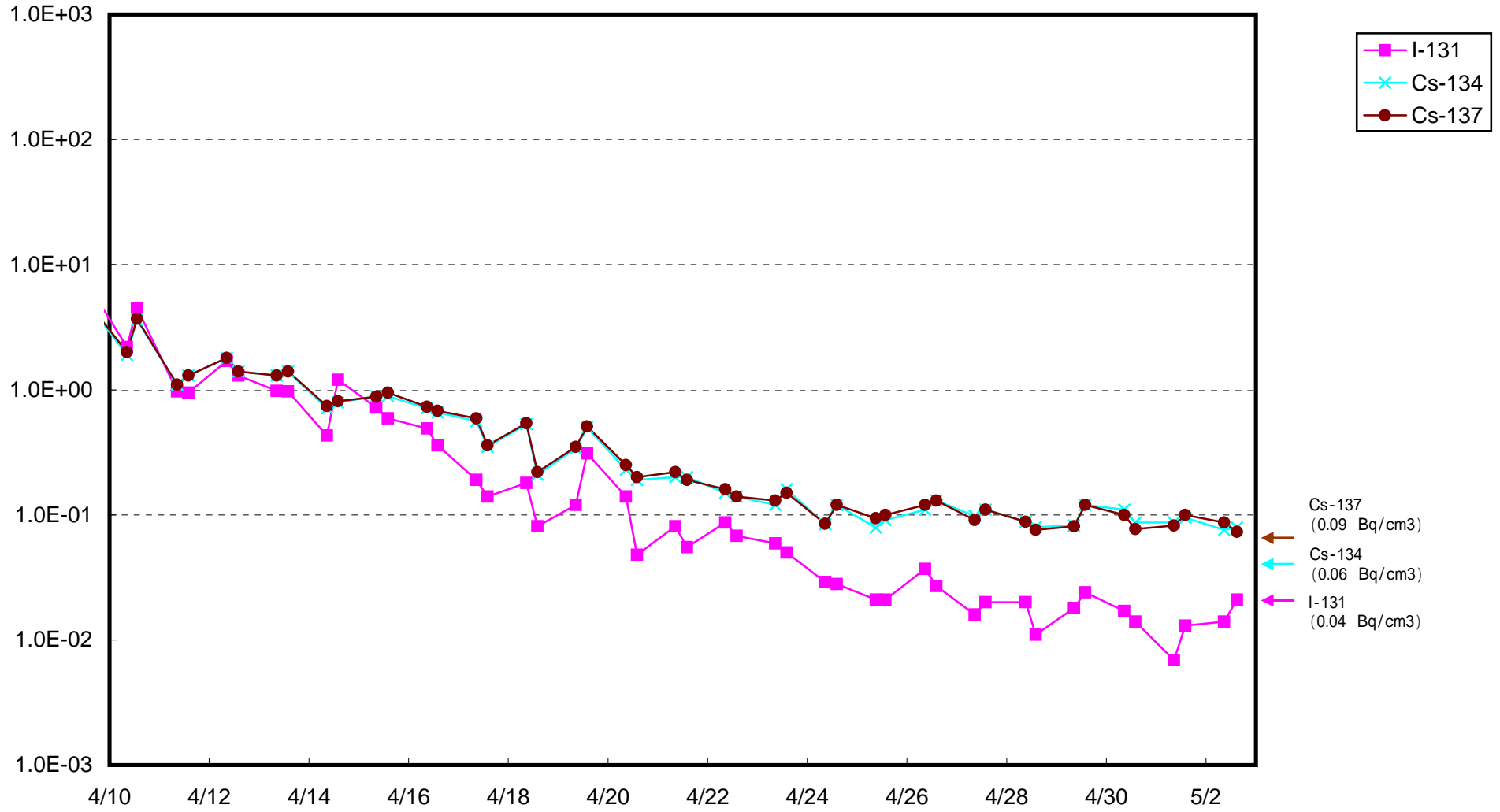
Radioactive Density of Seawater (Bq/cm³)



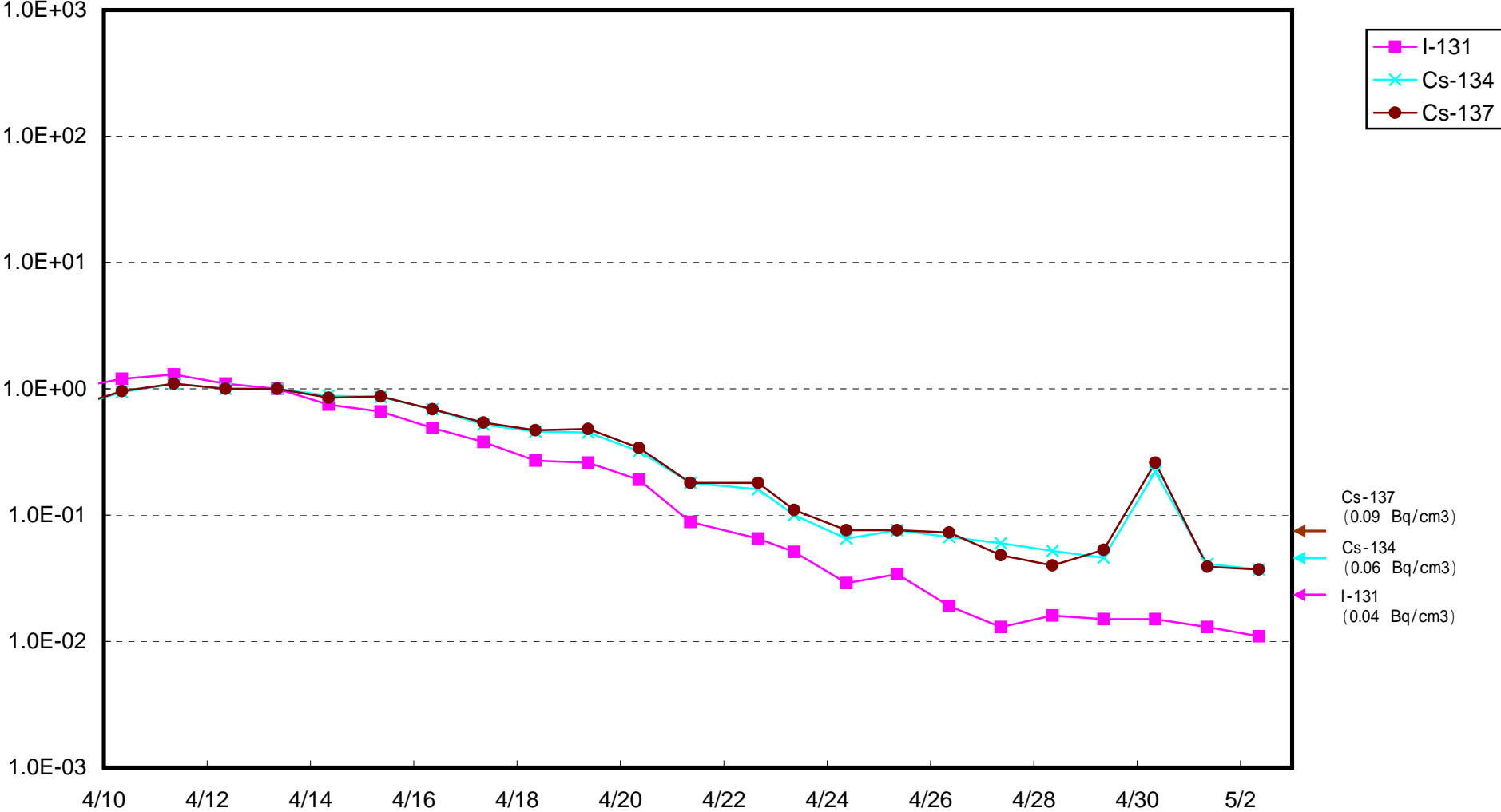
Radioactivity Density of Seawater at North of 1F5-6 Discharge Channel (approx.30m north of 5-6 discharge channel)
(Bq/cm³)



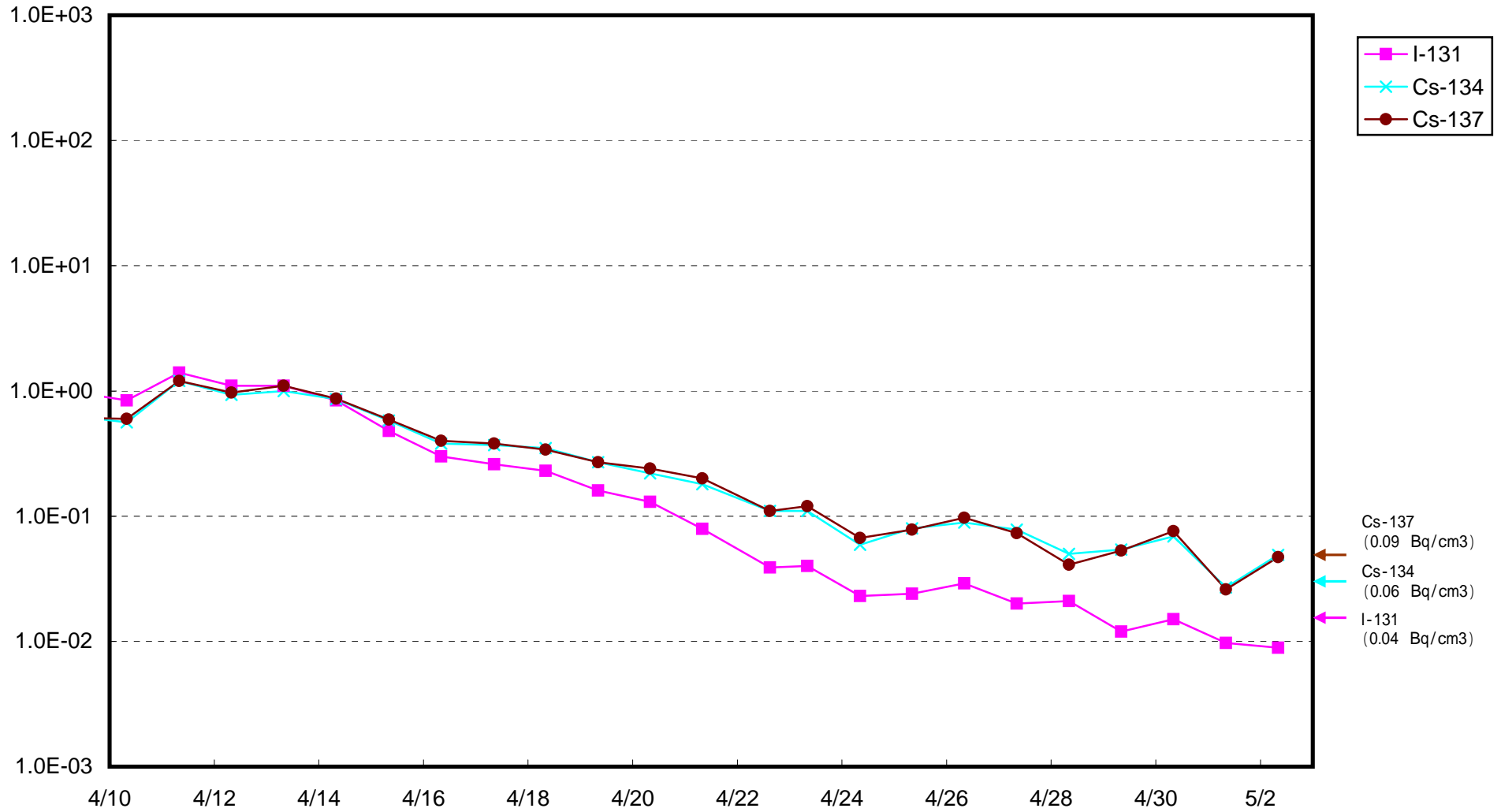
Radioactivity Density of Seawater at South Discharge Channel of 1F (Bq/cm³)



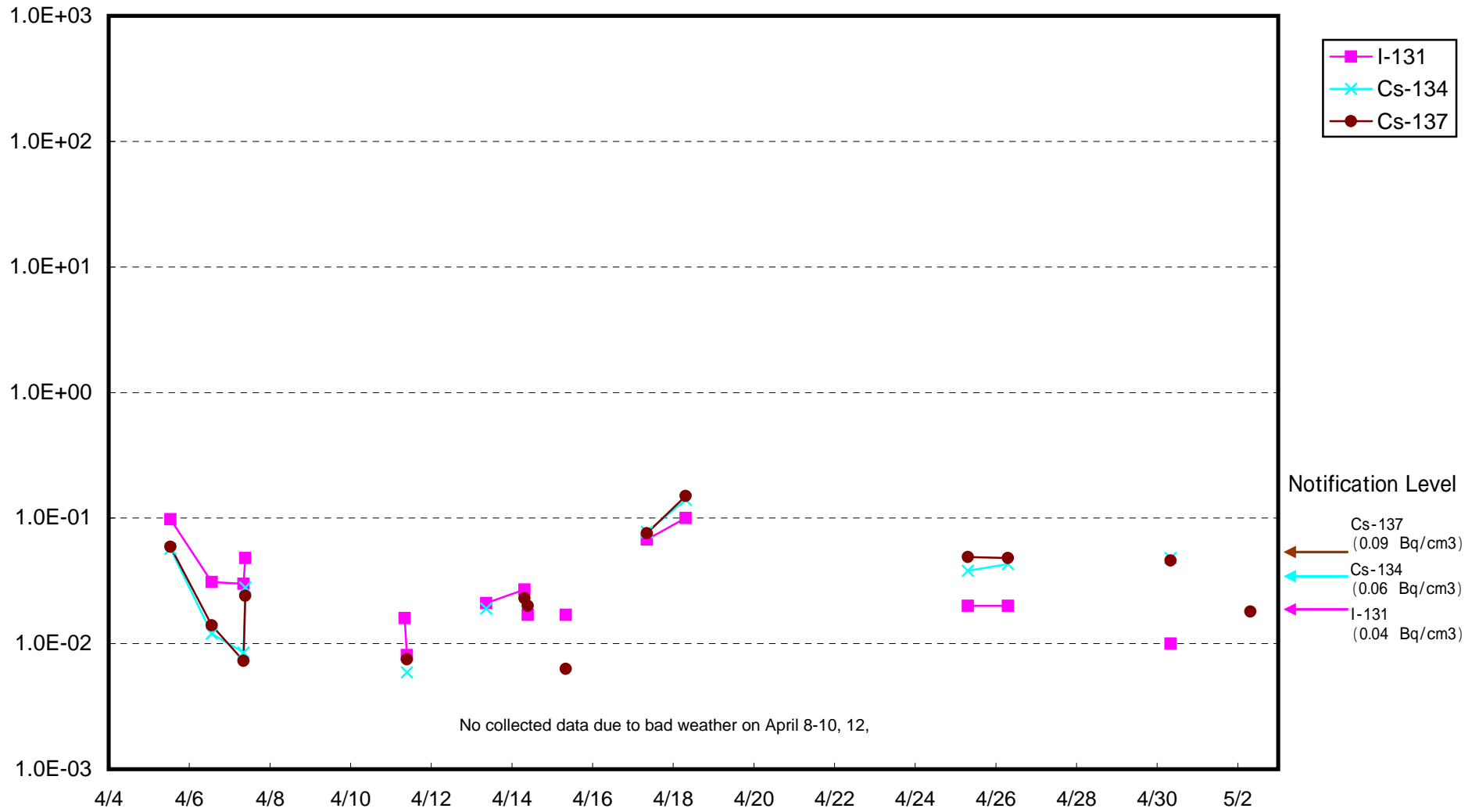
Radioactivity Density of Seawater at North Discharge Channel of 2F (Bq/cm³)



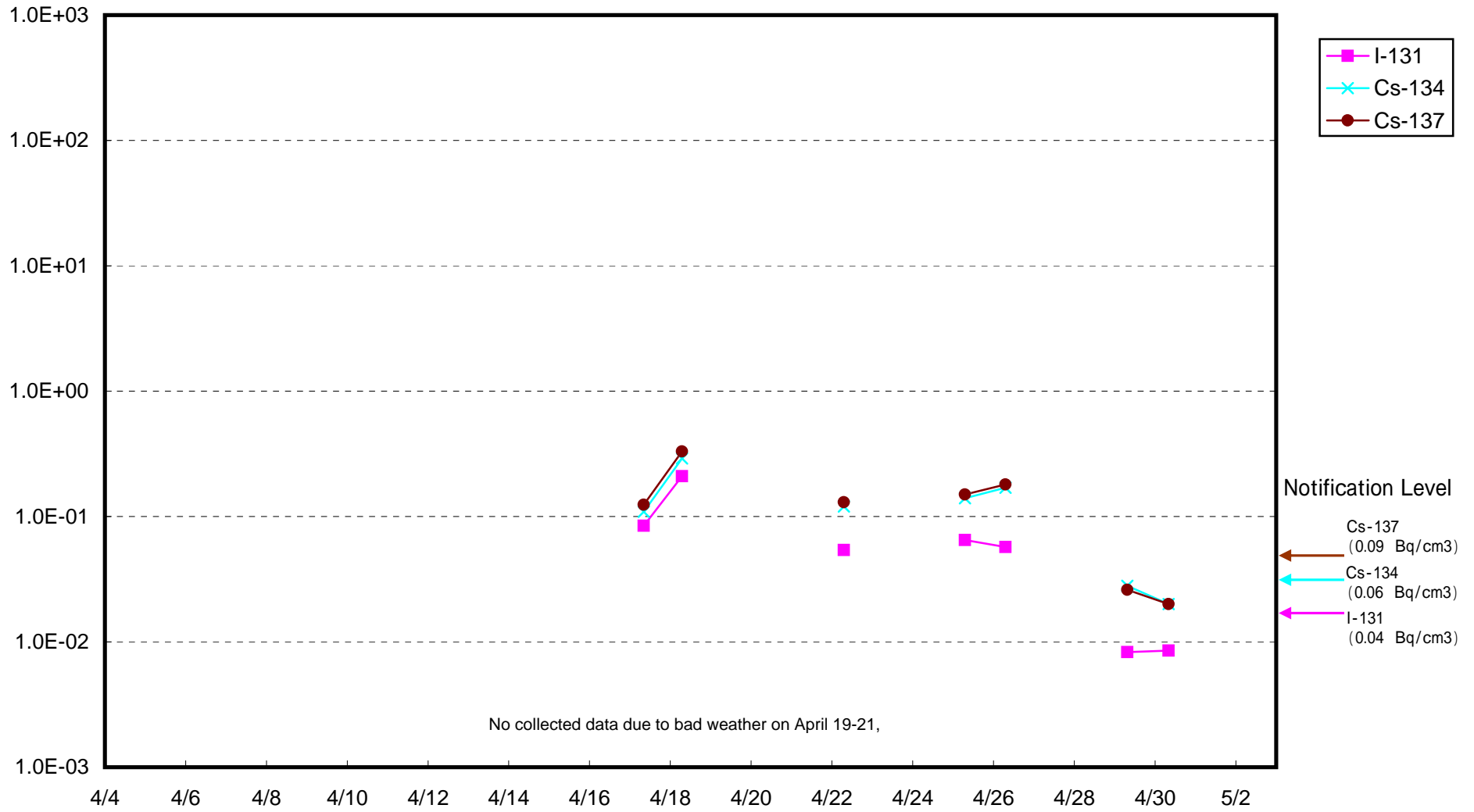
Radioactivity Density of Seawater at Iwasawa Shore 2F (Bq/cm³)



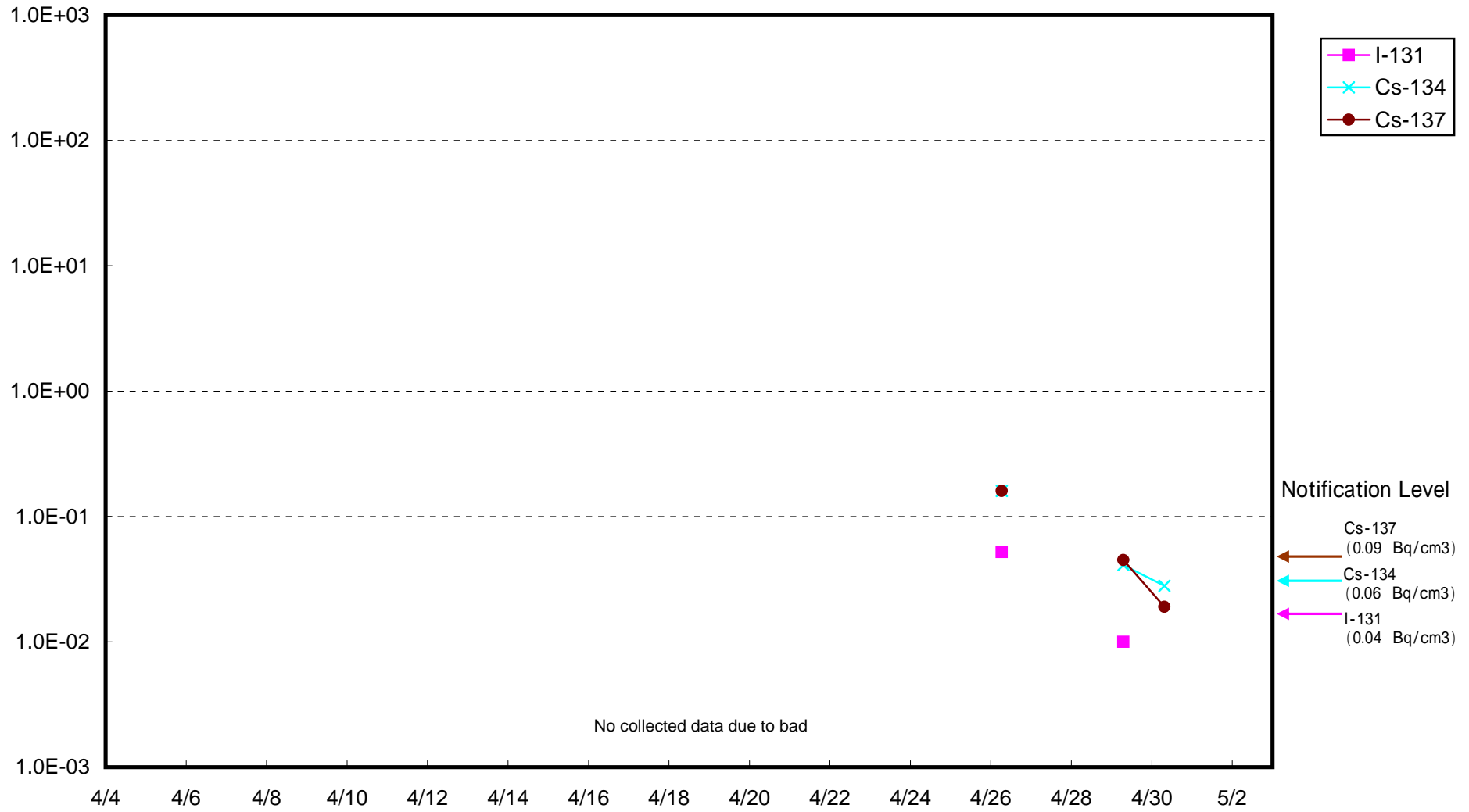
Radioactivity Density of Seawater around approx. 15 km offshore of Hirono-machi (Bq/cm³)



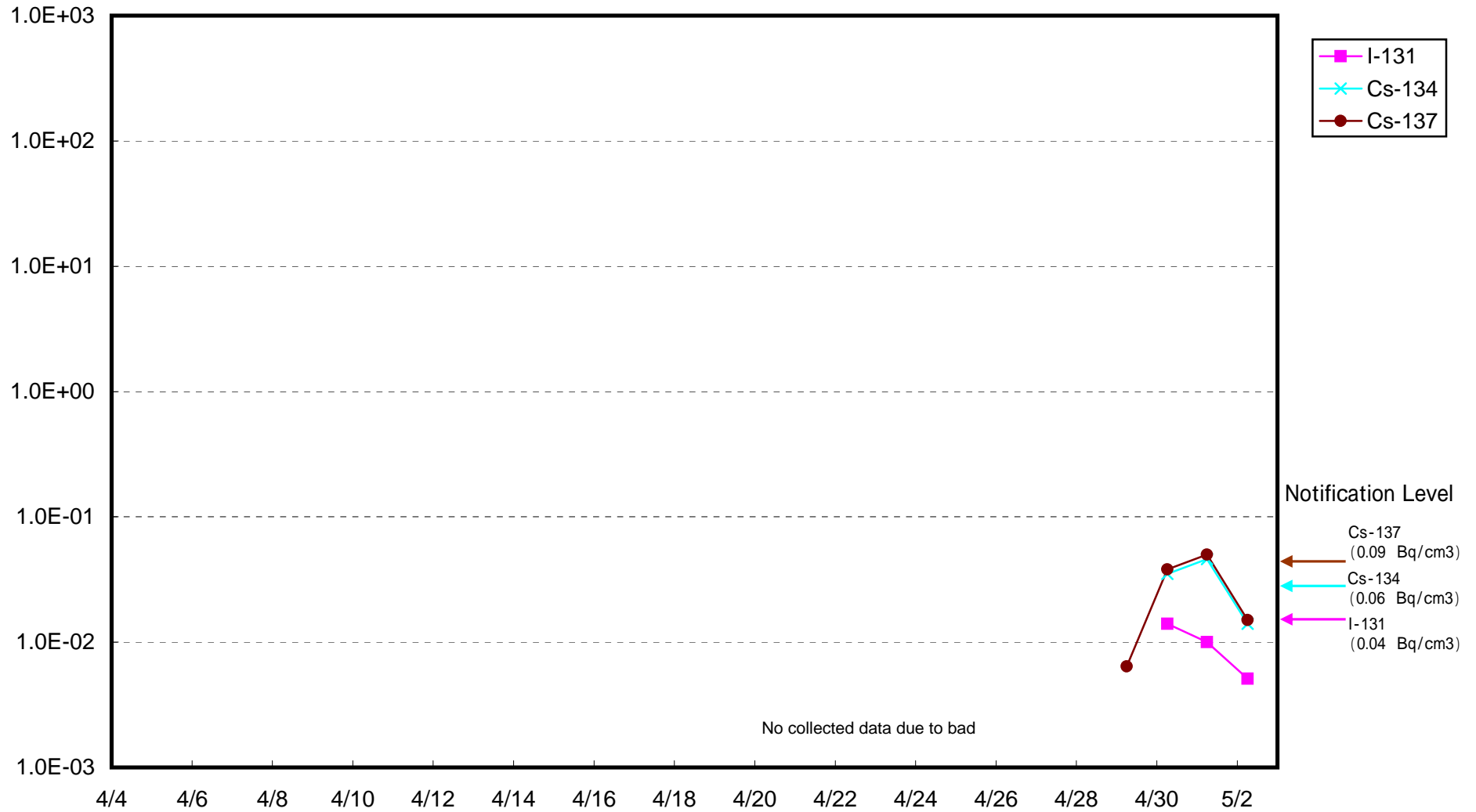
Radioactivity Density of Seawater around 3 km offshore of the north of Iwaki City (Bq/cm³)



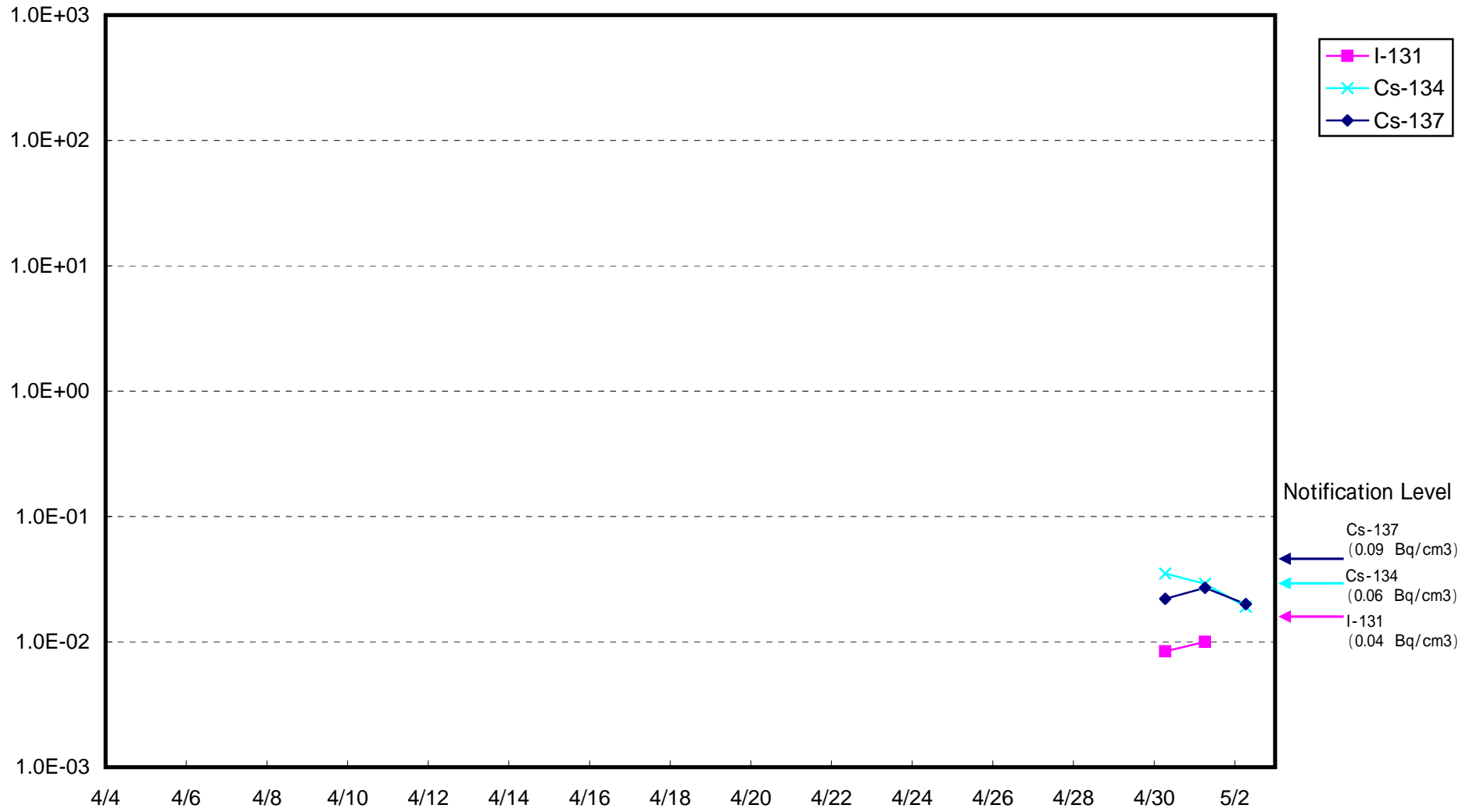
Radioactivity Density of Seawater around 3 km offshore of Natsui River (Bq/cm³)



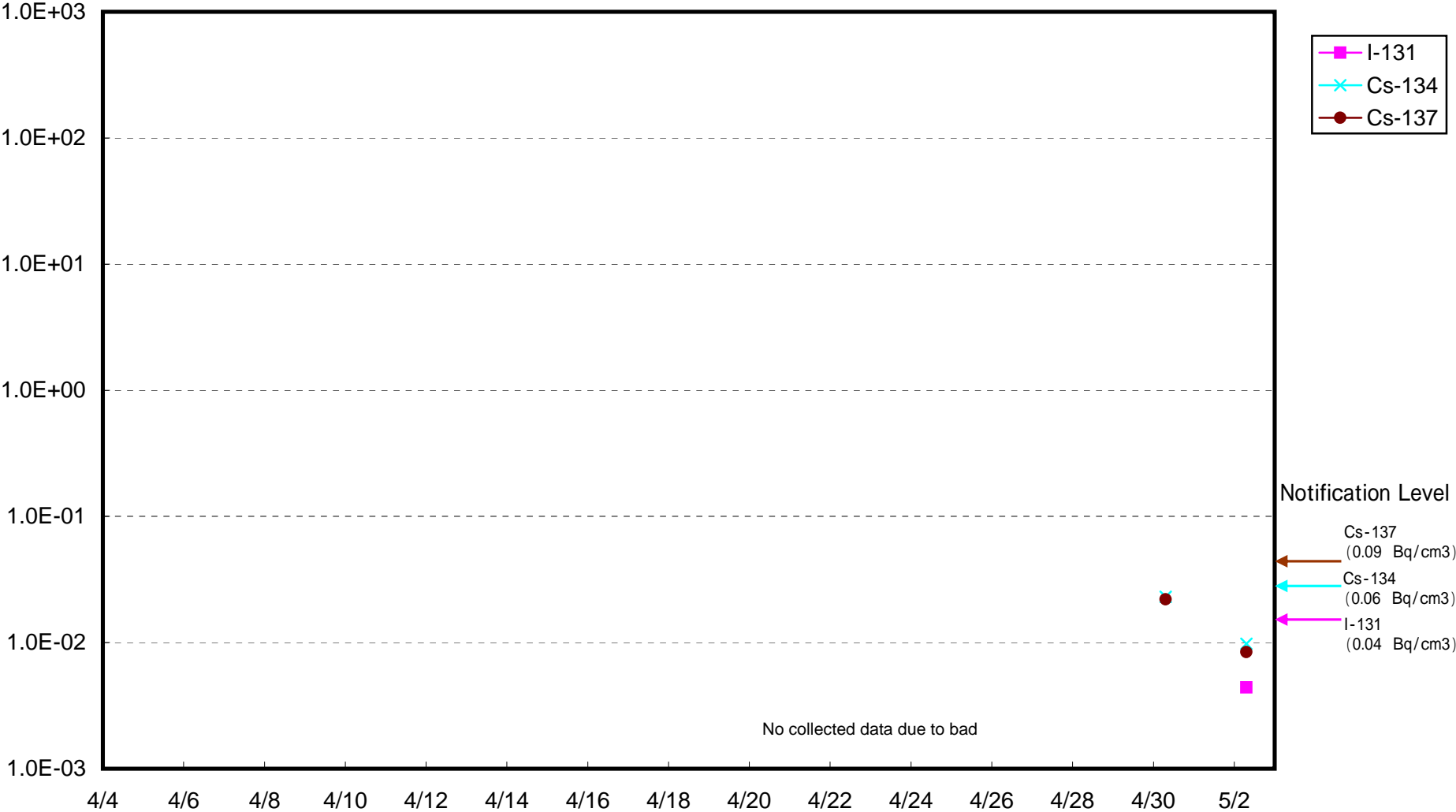
Radioactivity Density of Seawater around 3 km offshore of Onahama port (Bq/cm³)



Radioactivity Density of Seawater around 3 km offshore of Ena port (Bq/cm³)



Radioactivity Density of Seawater around 3 km offshore of Numanouchi (Bq/cm3)



Radioactivity Density of Seawater around 3 km offshore of Toyoma (Bq/cm³)

