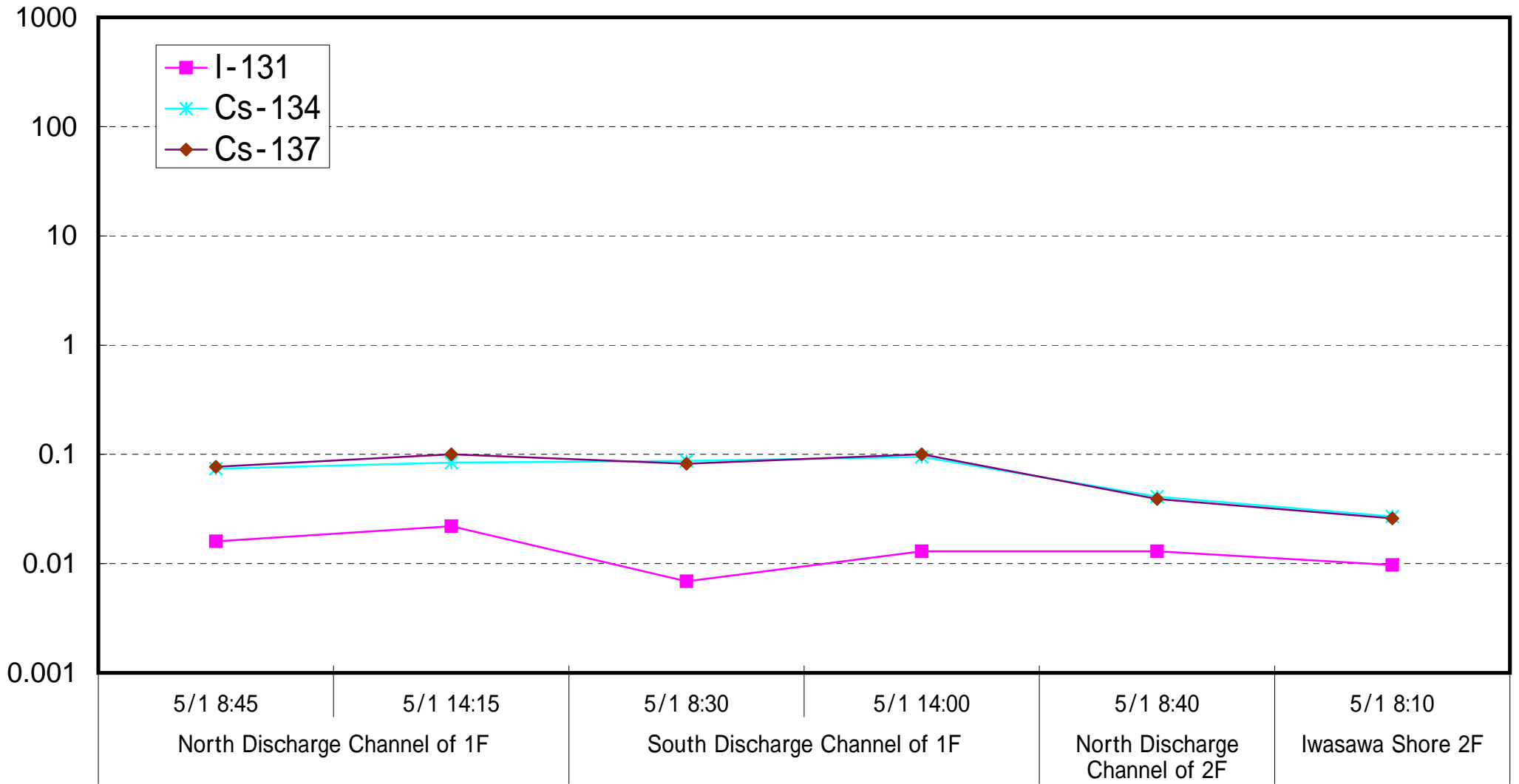
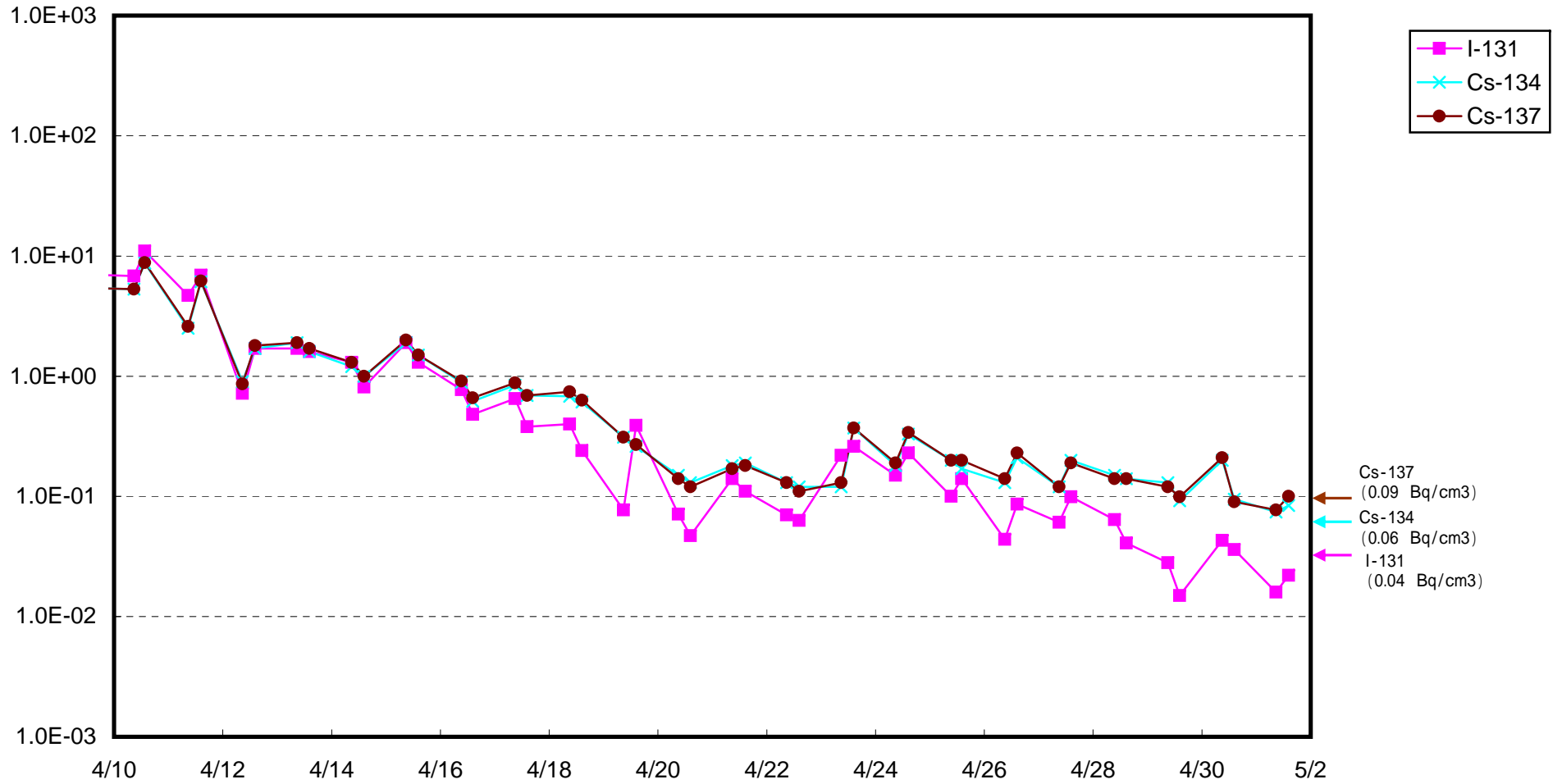


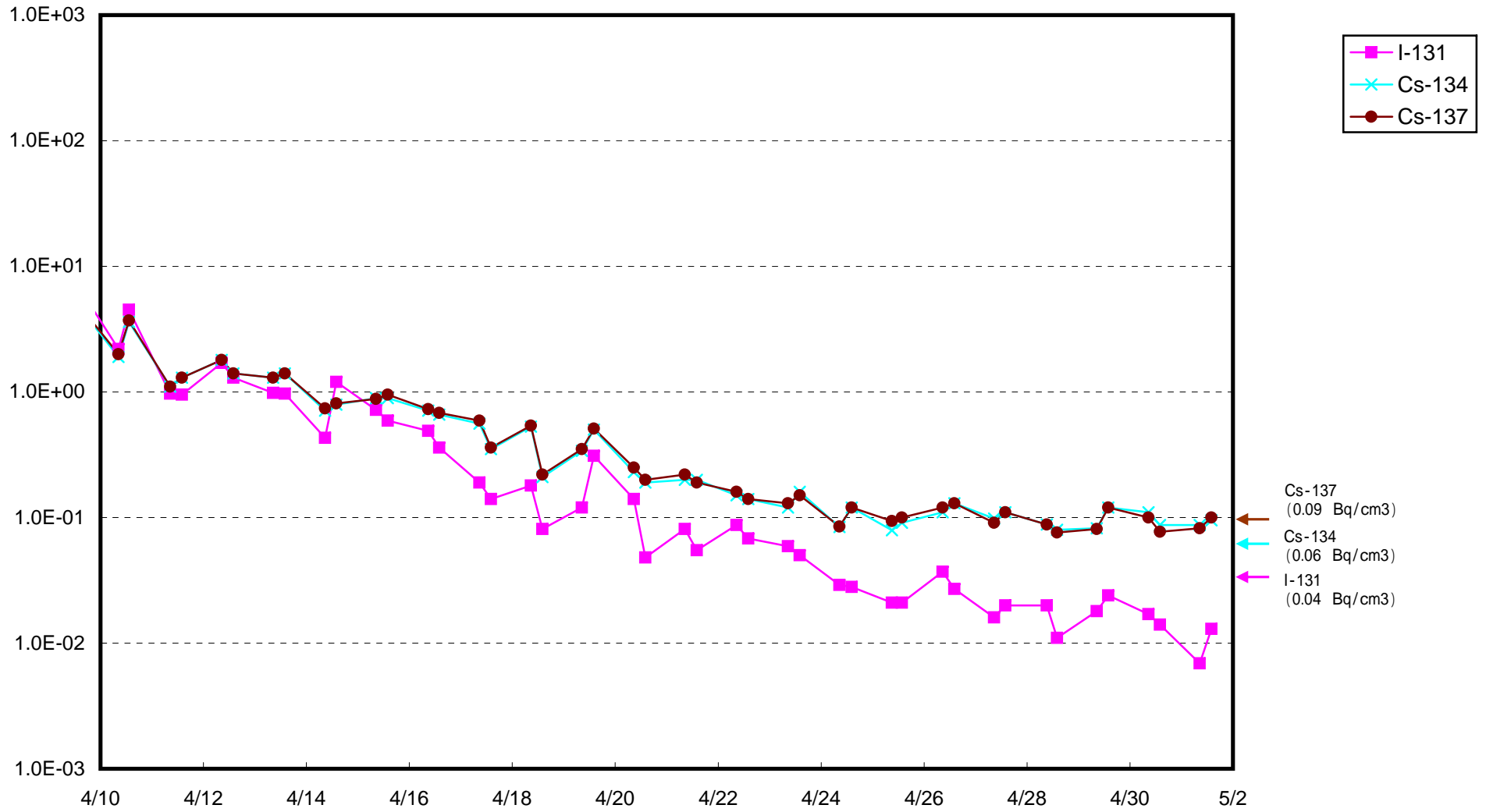
# Radioactive Density of Seawater ( B q / c m3)



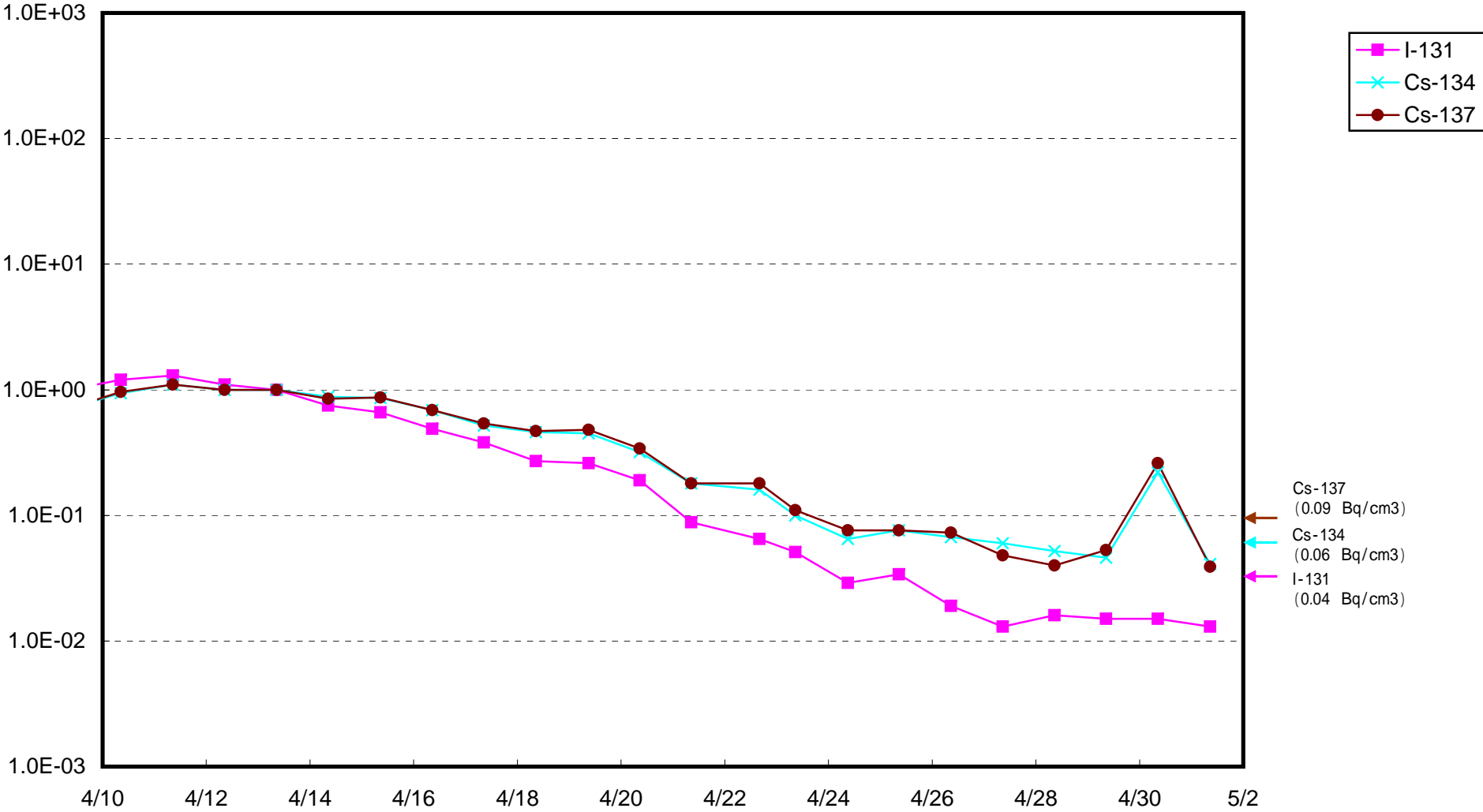
Radioactivity Density of Seawater at North of 1F5-6 Discharge Channel (approx.30m north of 5-6 discharge channel)  
(Bq/cm<sup>3</sup>)



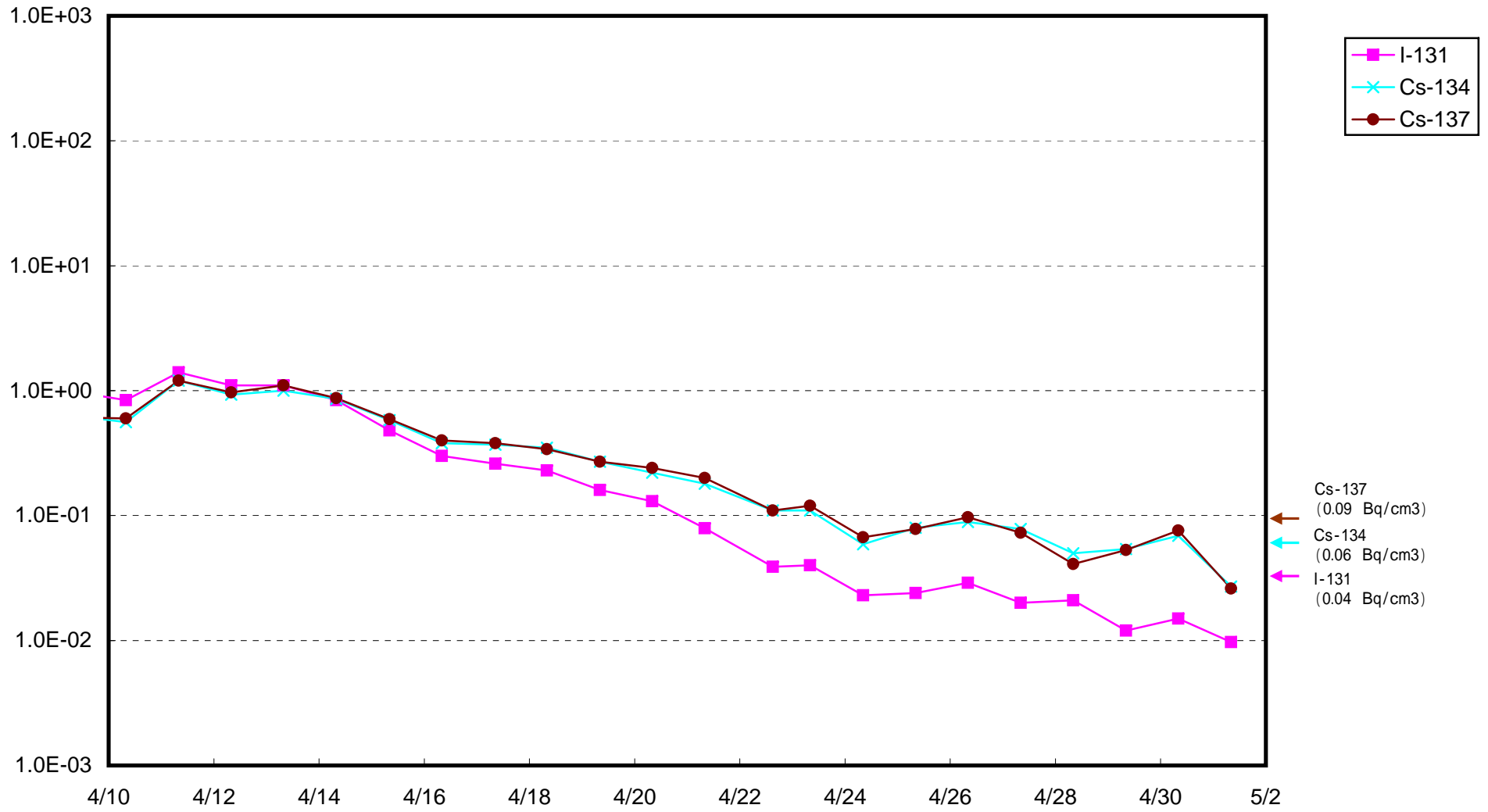
Radioactivity Density of Seawater at South Discharge Channel of 1F (Bq/cm<sup>3</sup>)



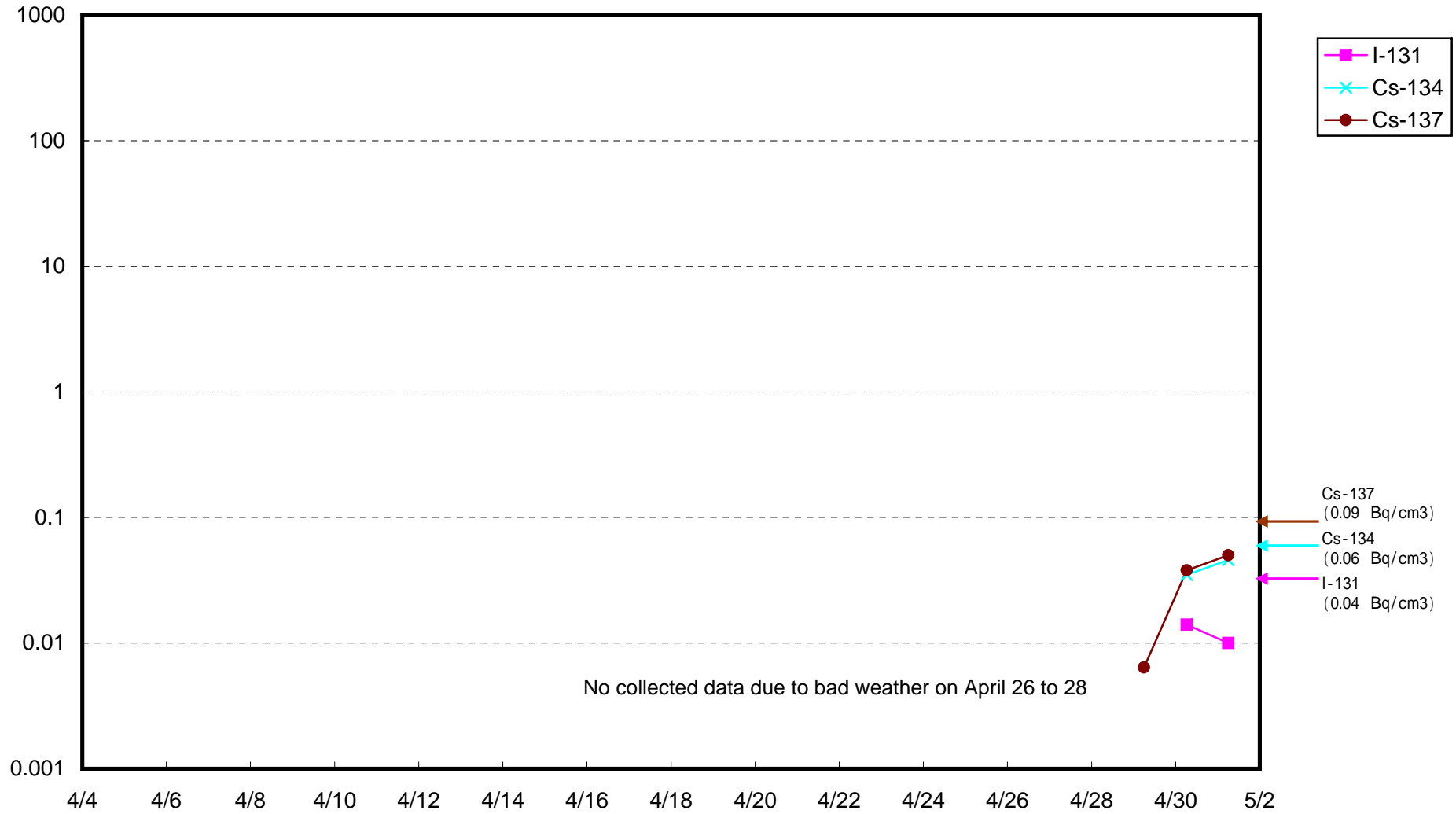
Radioactivity Density of Seawater at North Discharge Channel of 2F (Bq/cm<sup>3</sup>)



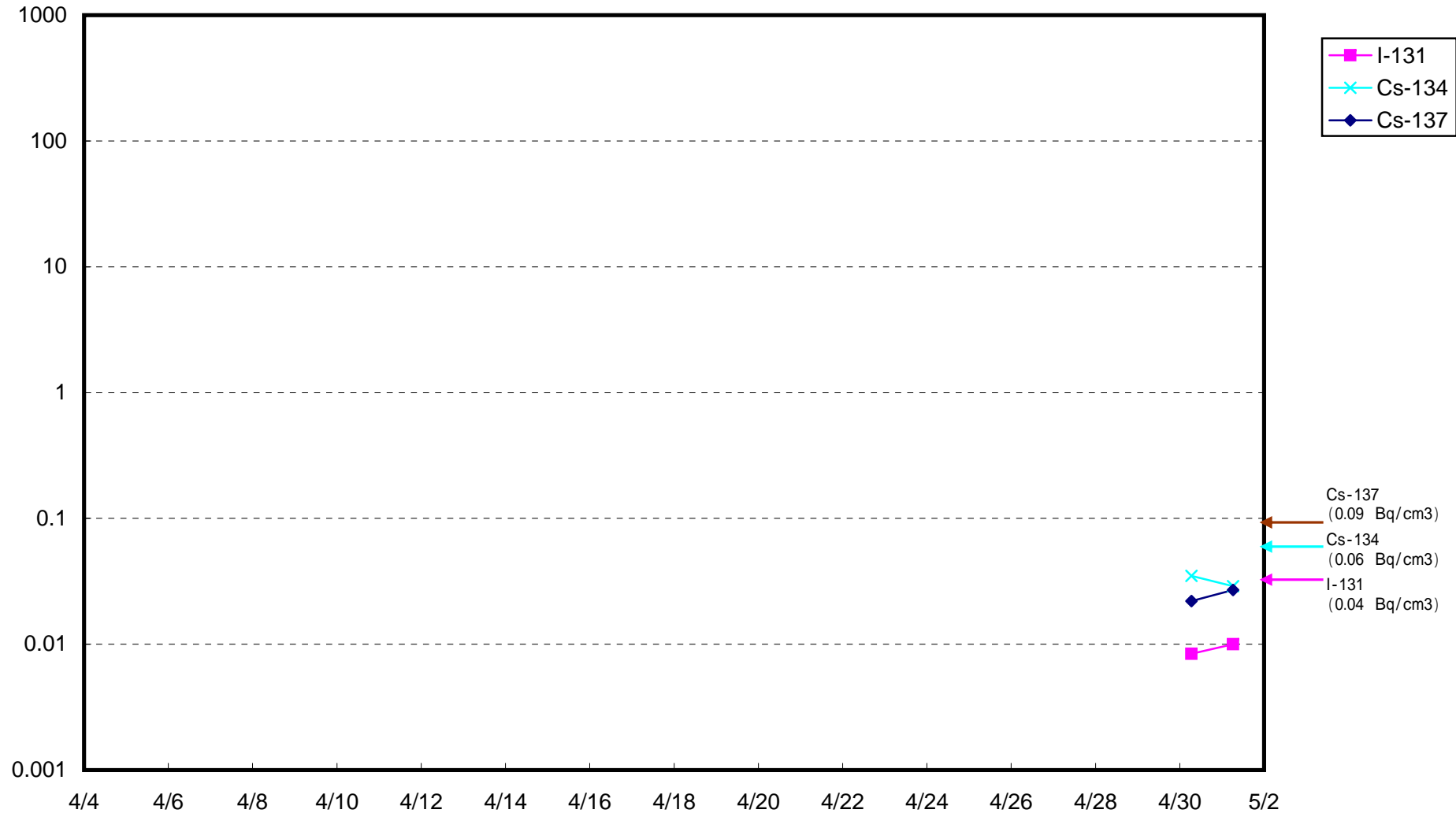
Radioactivity Density of Seawater at Iwasawa Shore 2F (Bq/cm<sup>3</sup>)



Radioactivity Density of Seawater around 3 km offshore of Onahama port ( B q / c m 3 )



Radioactivity Density of Seawater around 3 km offshore of Ena port (Bq / cm<sup>3</sup>)



Radioactivity Density of Seawater around 3 km offshore of Toyoma( Bq / c m 3 )

