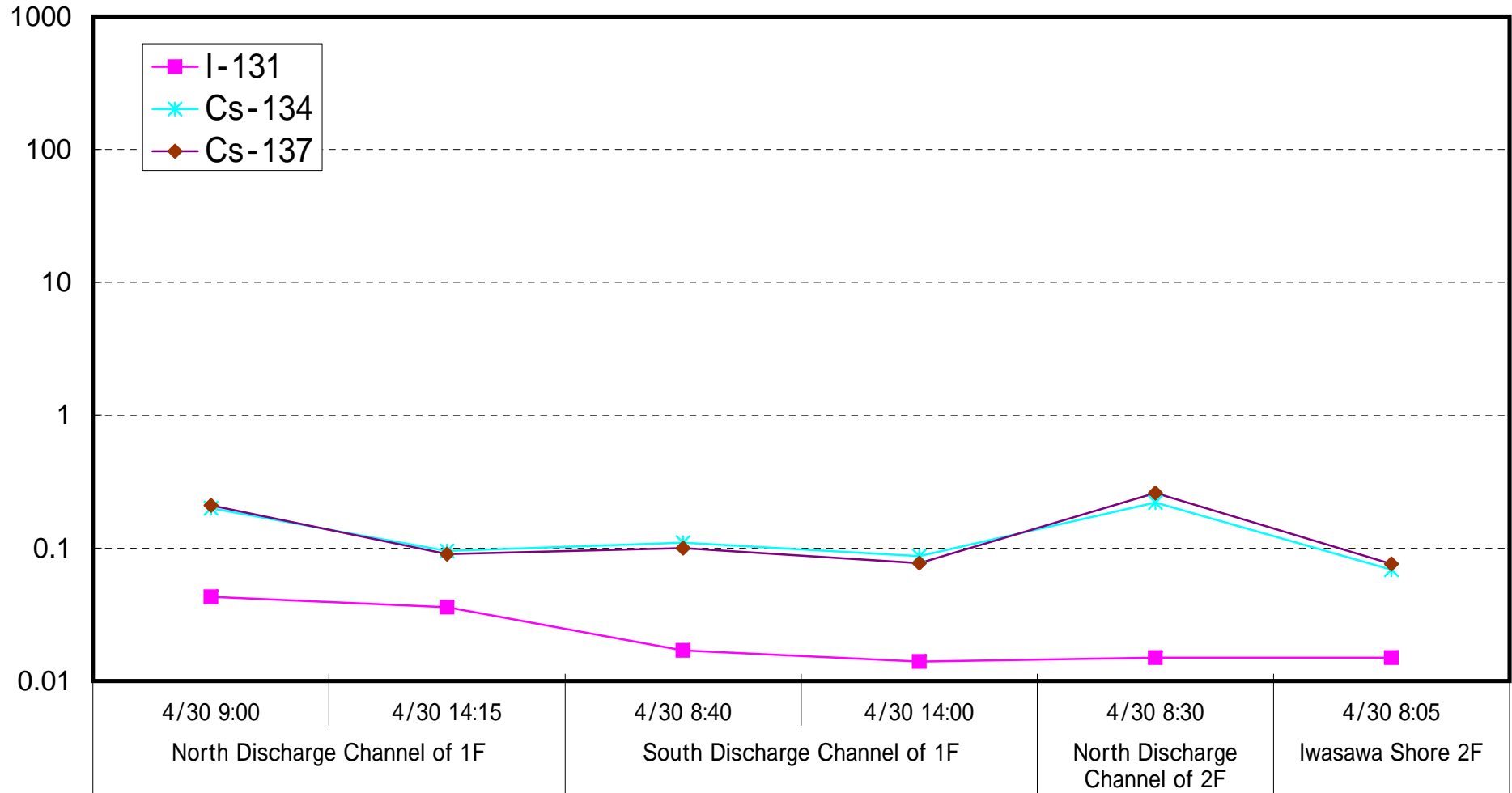
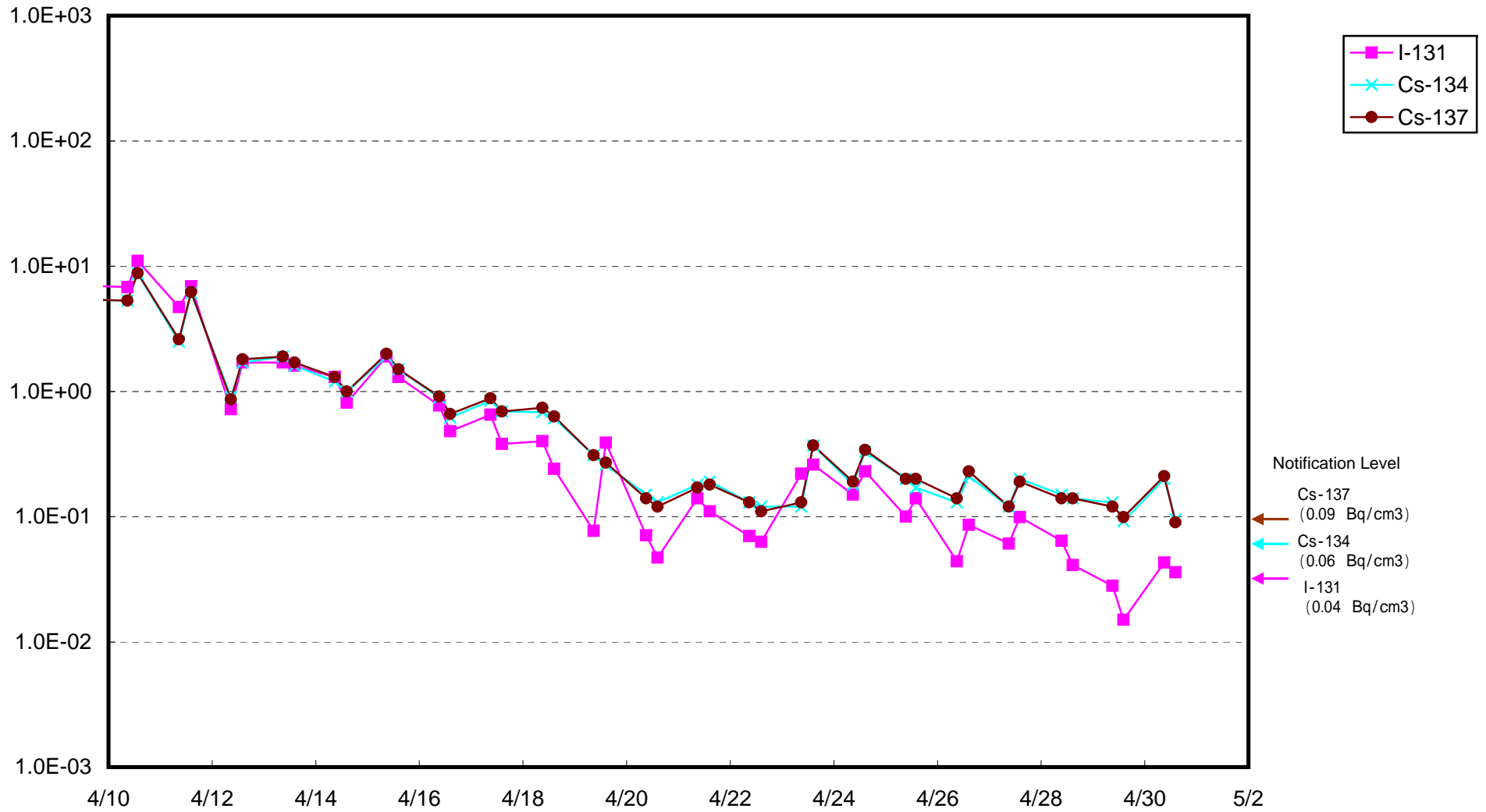


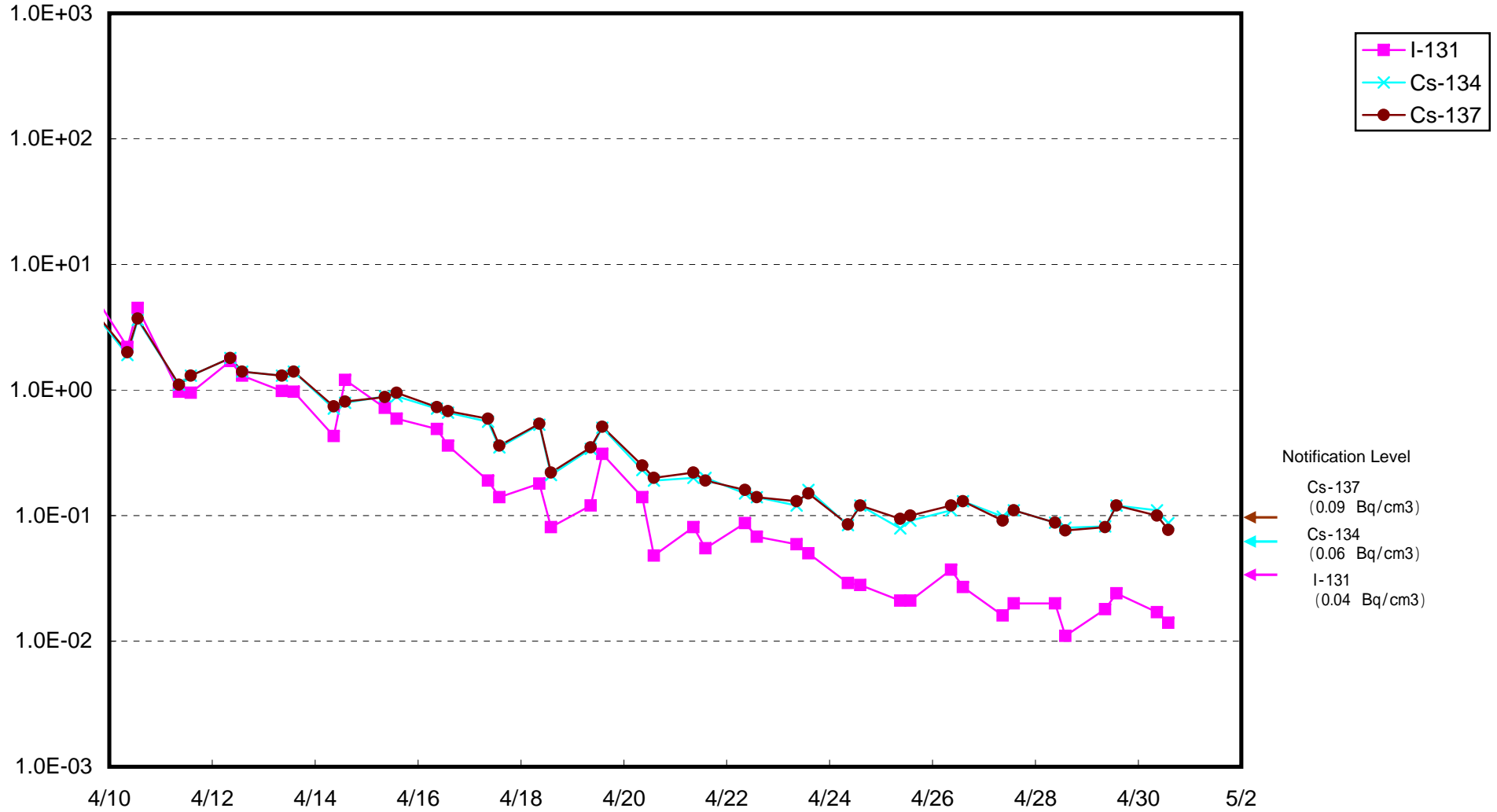
Radioactive Density of Seawater ( Bq / c m3)



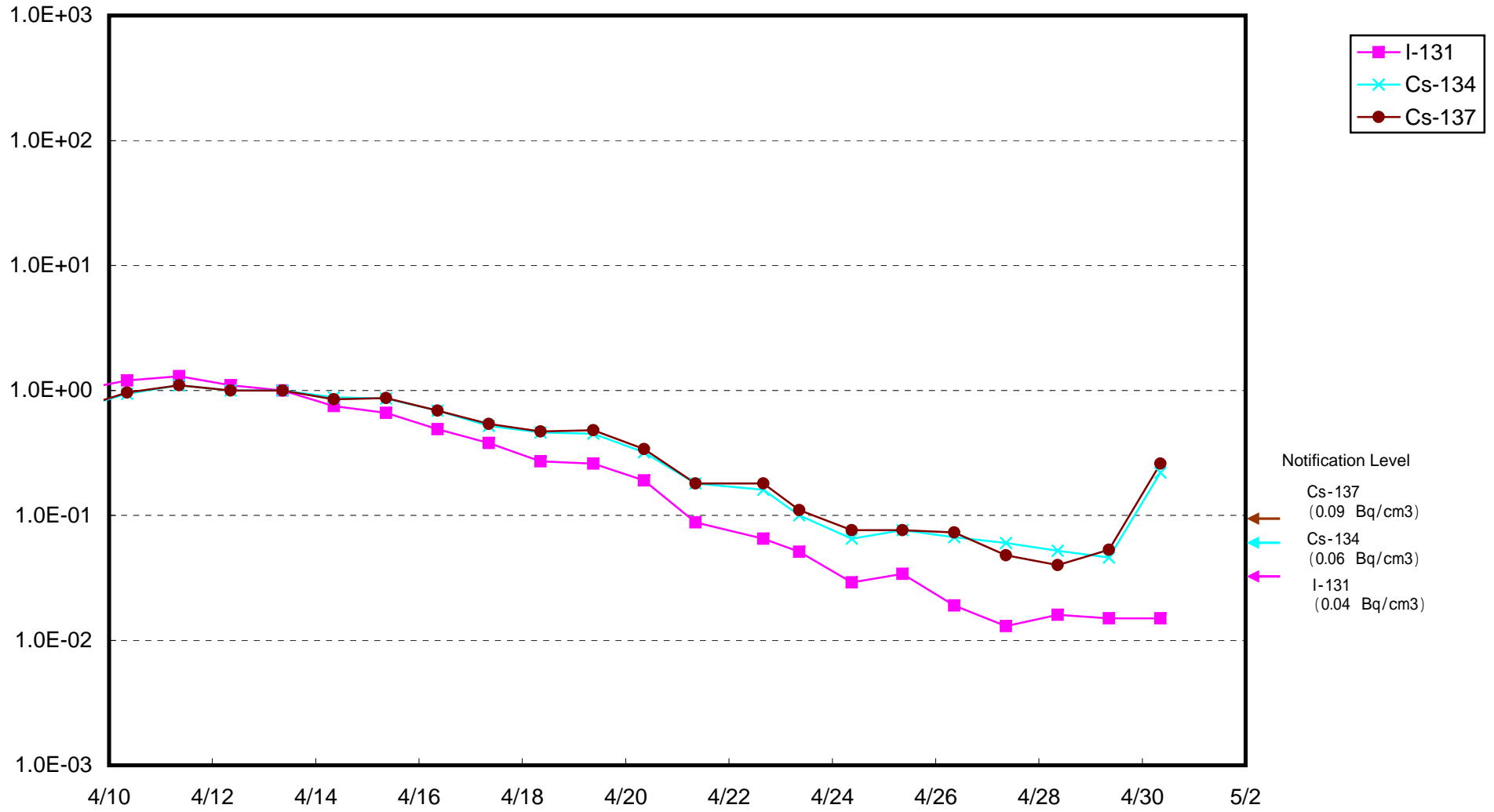
Radioactivity Density of Seawater at North of 1F5-6 Discharge Channel (approx.30m north of 5-6 discharge channel)  
(Bq/cm<sup>3</sup>)



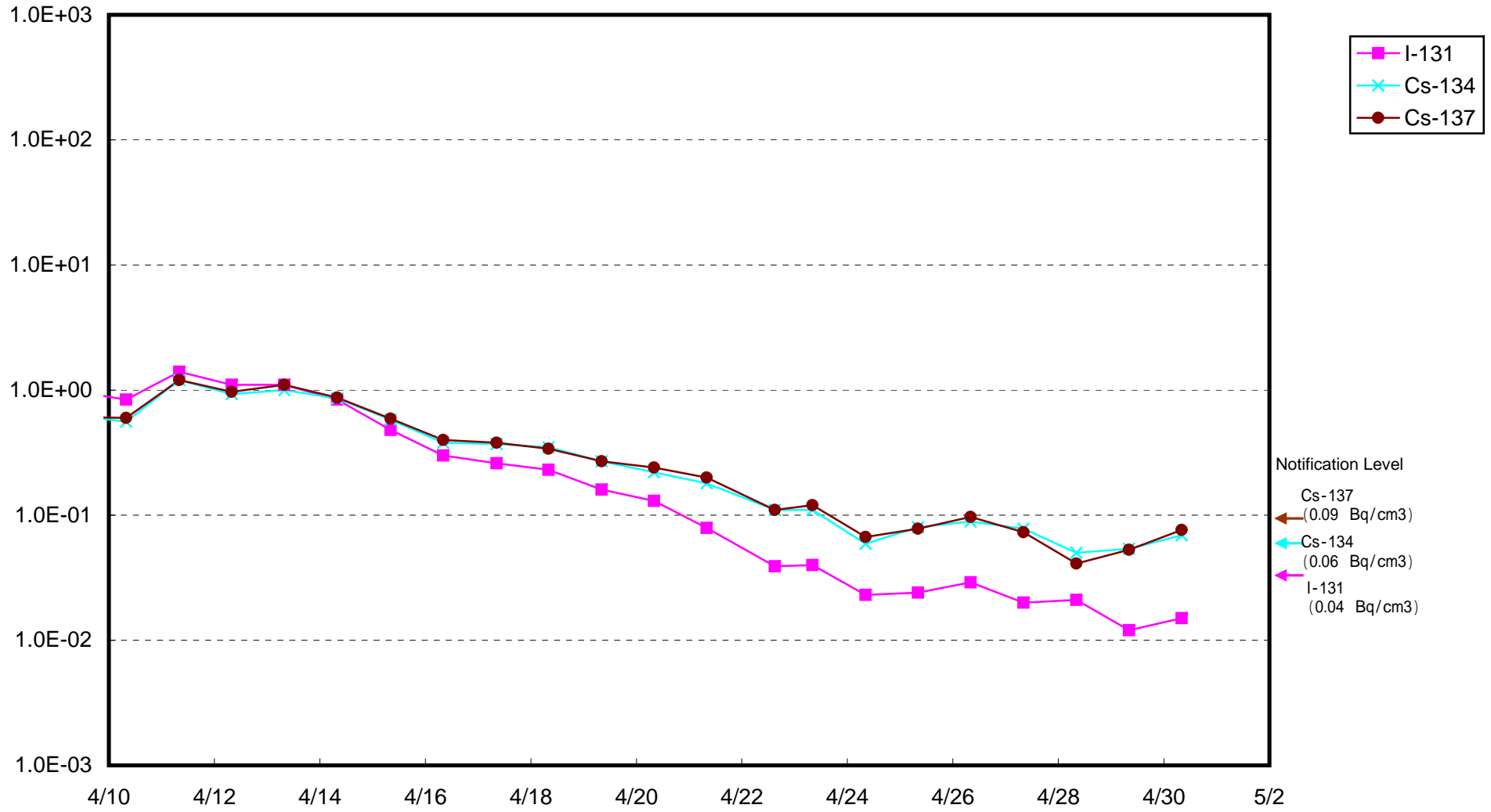
Radioactivity Density of Seawater at South Discharge Channel of 1F (Bq/cm<sup>3</sup>)



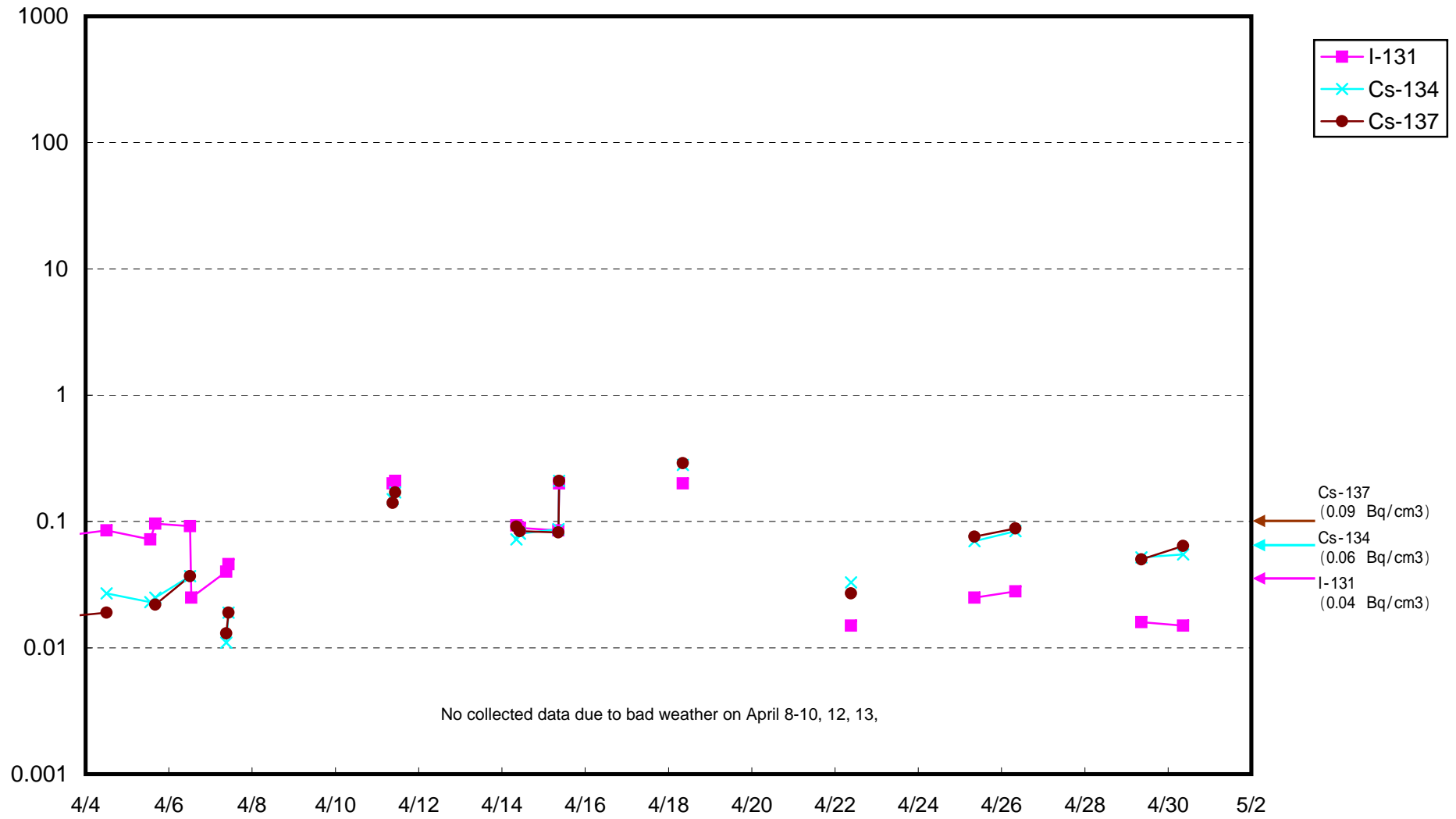
Radioactivity Density of Seawater at North Discharge Channel of 2F (Bq/cm<sup>3</sup>)



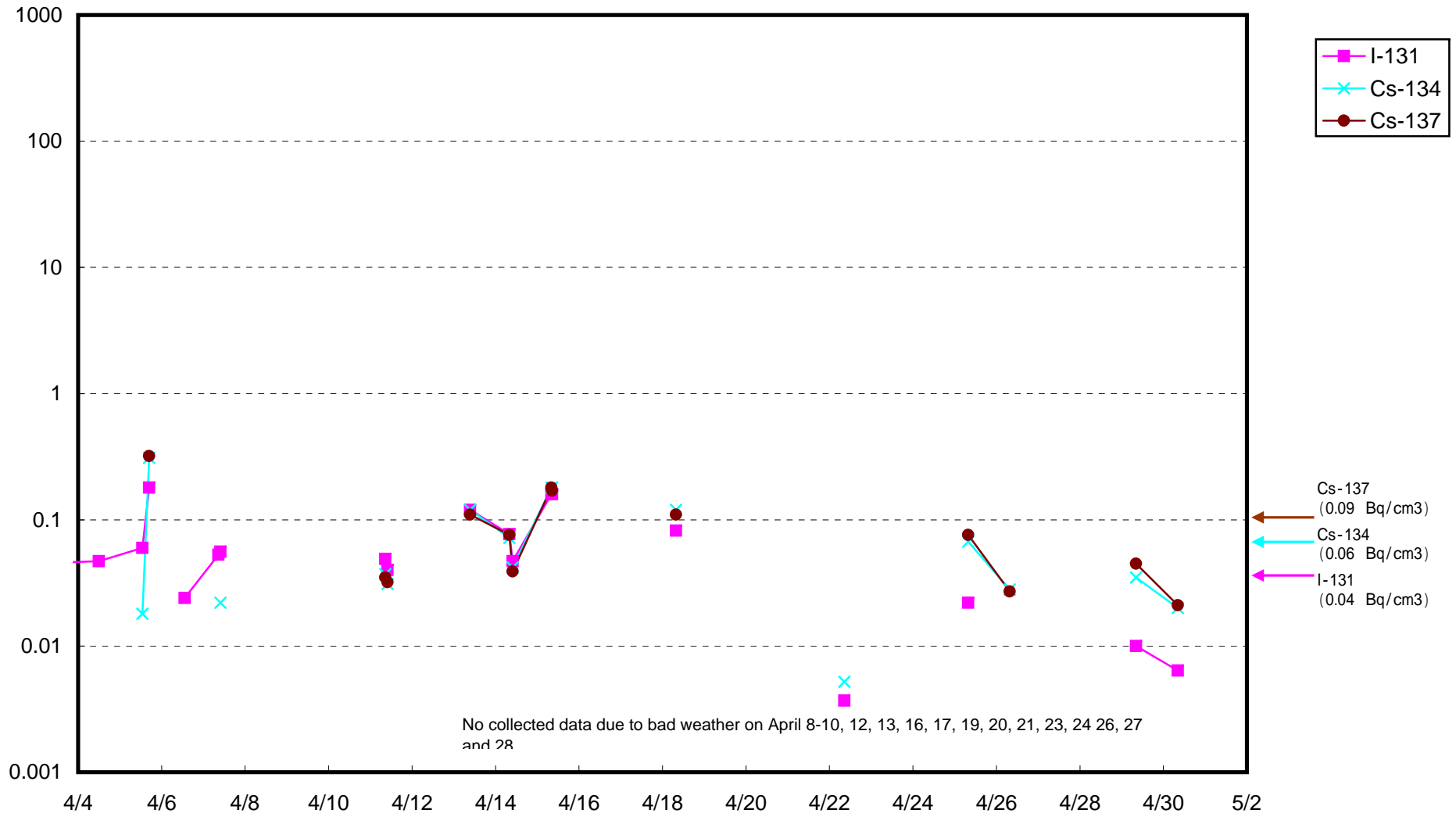
Radioactivity Density of Seawater at Iwasawa Shore 2F (Bq/cm<sup>3</sup>)



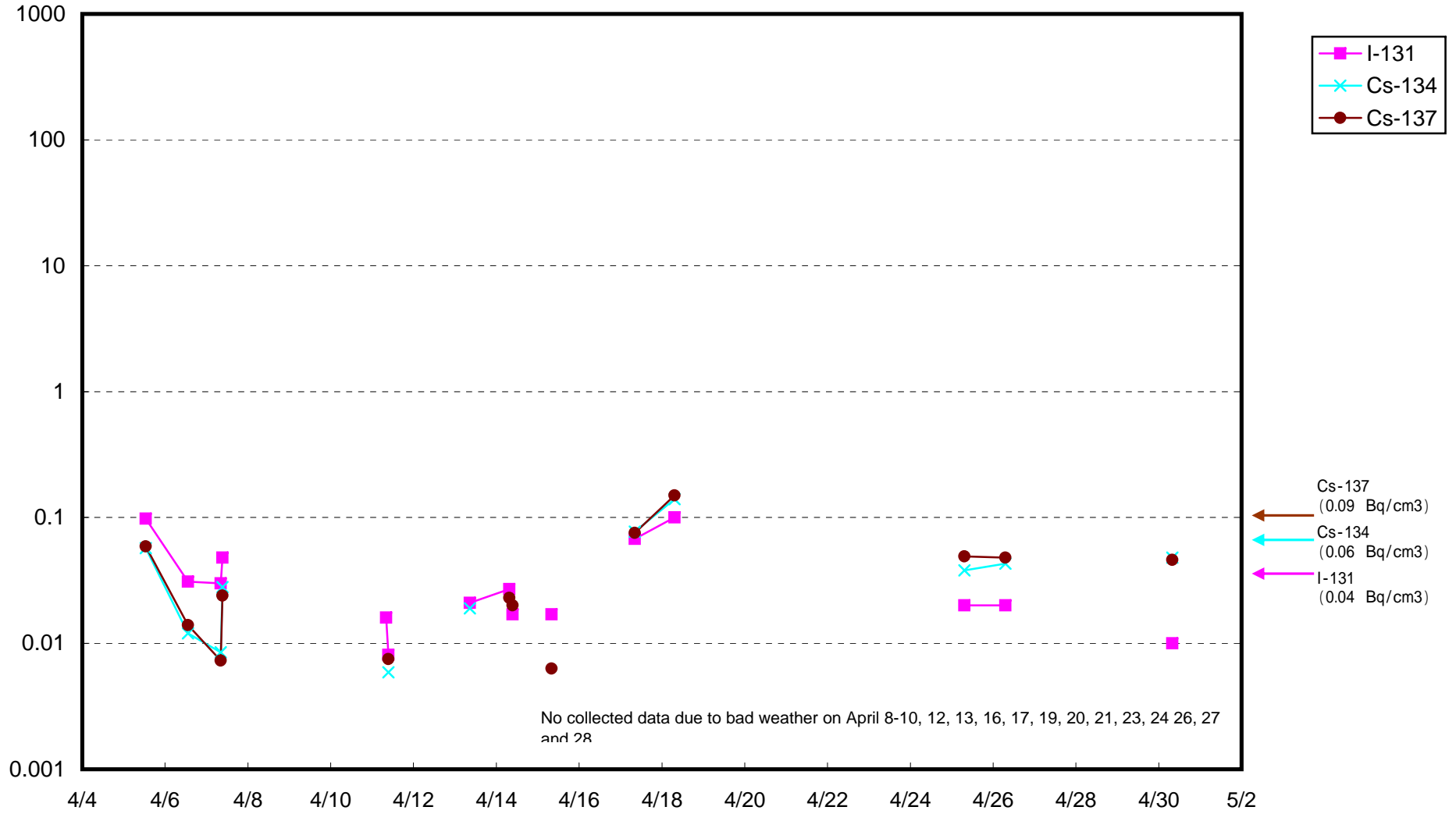
Radioactivity Density of Seawater around approx. 15 km offshore of the site of Fukushima Daini ( B q / c m 3 )



Radioactivity Density of Seawater around approx. 15 km offshore of Iwasawa Shore ( B q / c m 3 )

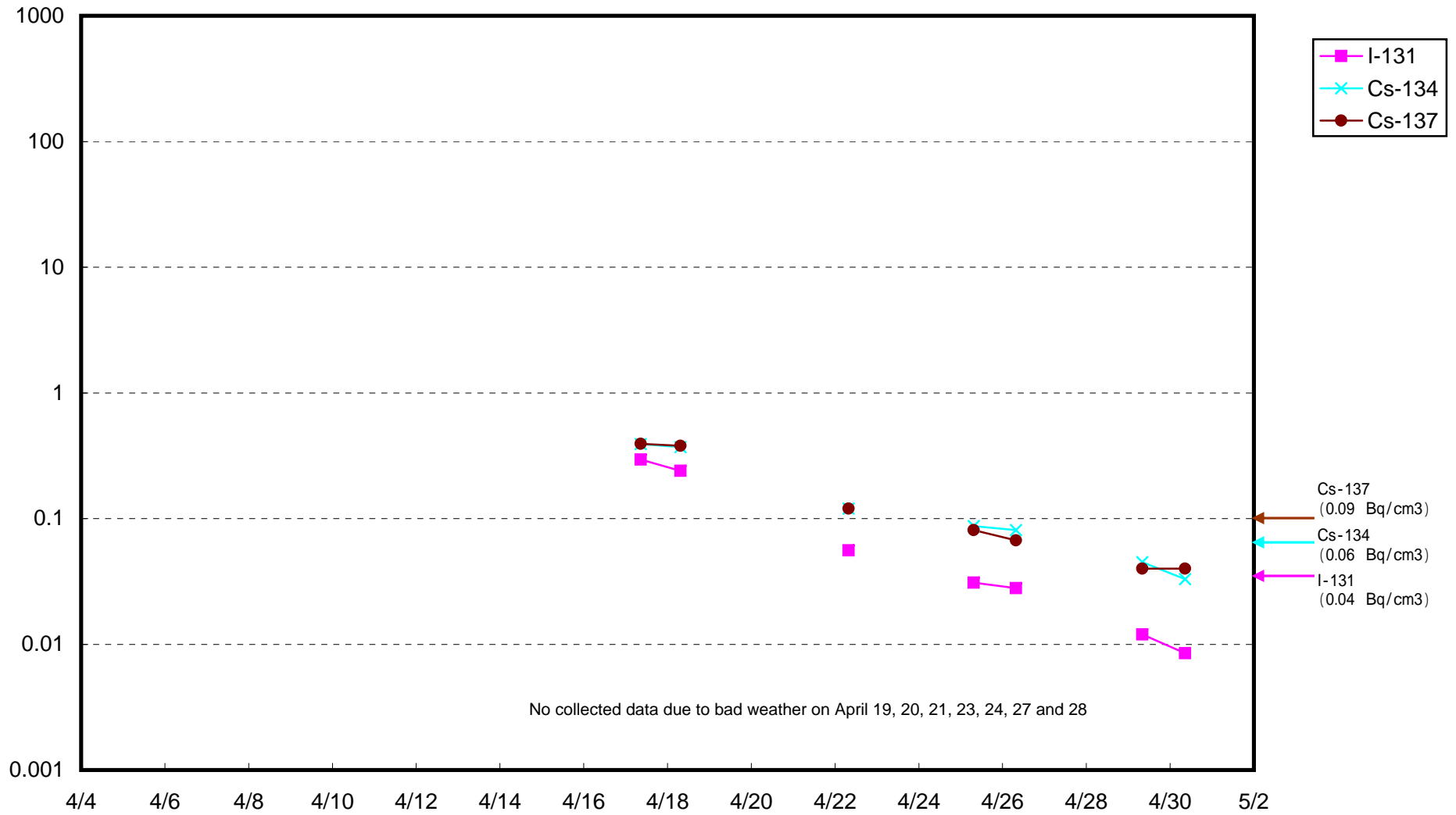


Radioactivity Density of Seawater around approx. 15 km offshore of Hirono-machi ( B q / c m 3 )

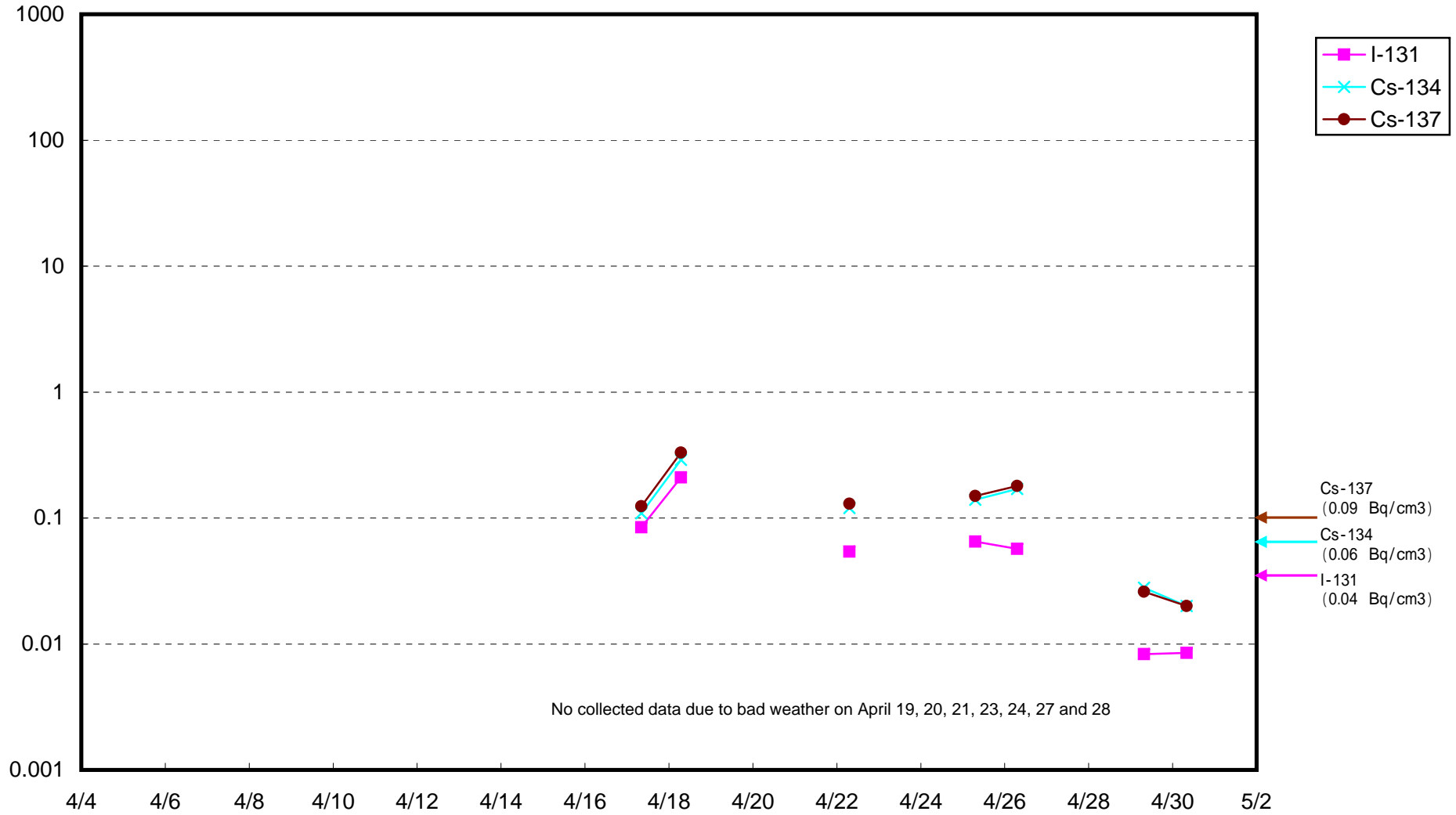




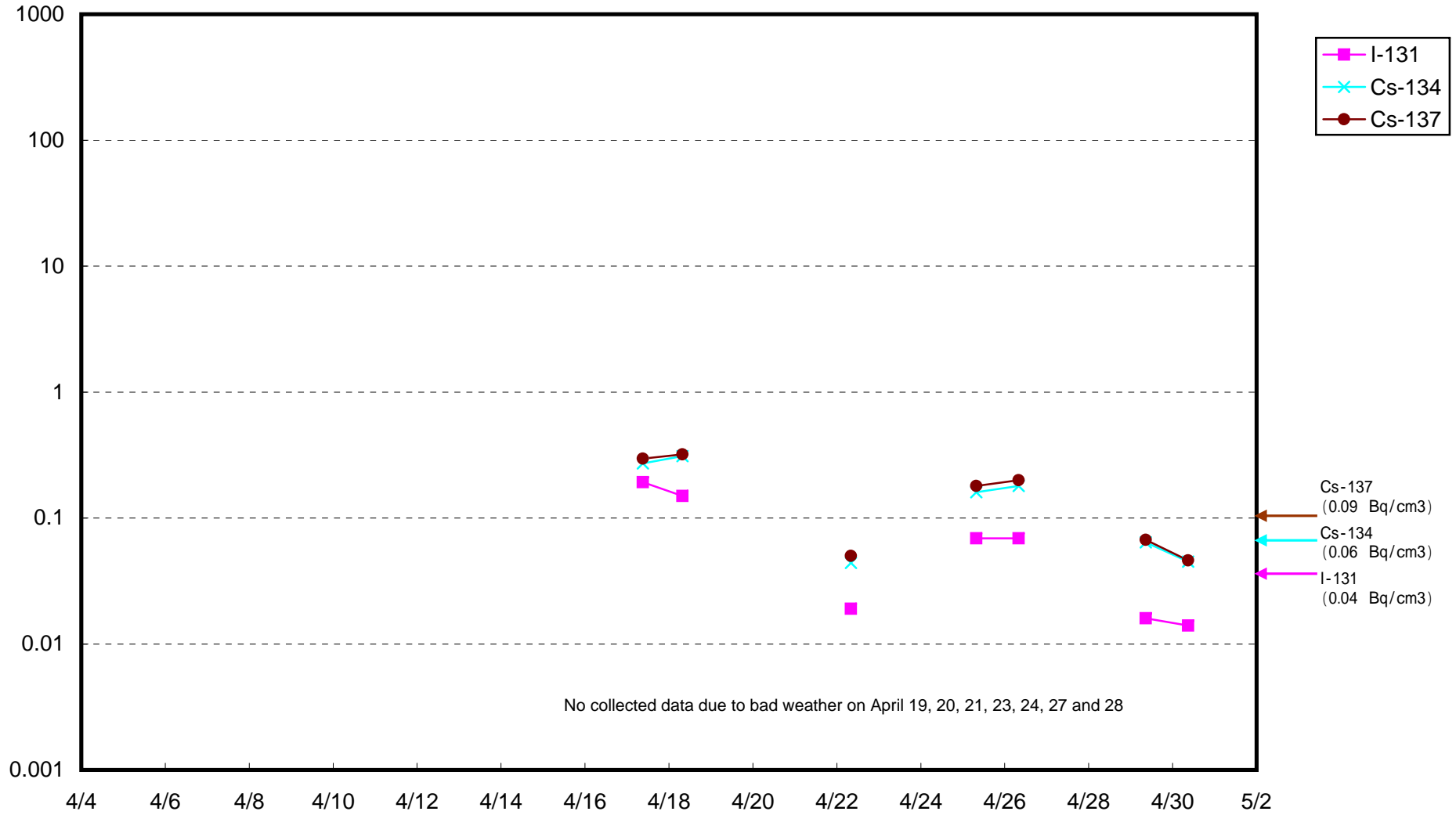
Radioactivity Density of Seawater around 3 km offshore of Iwasawa Shore ( B q / c m 3 )



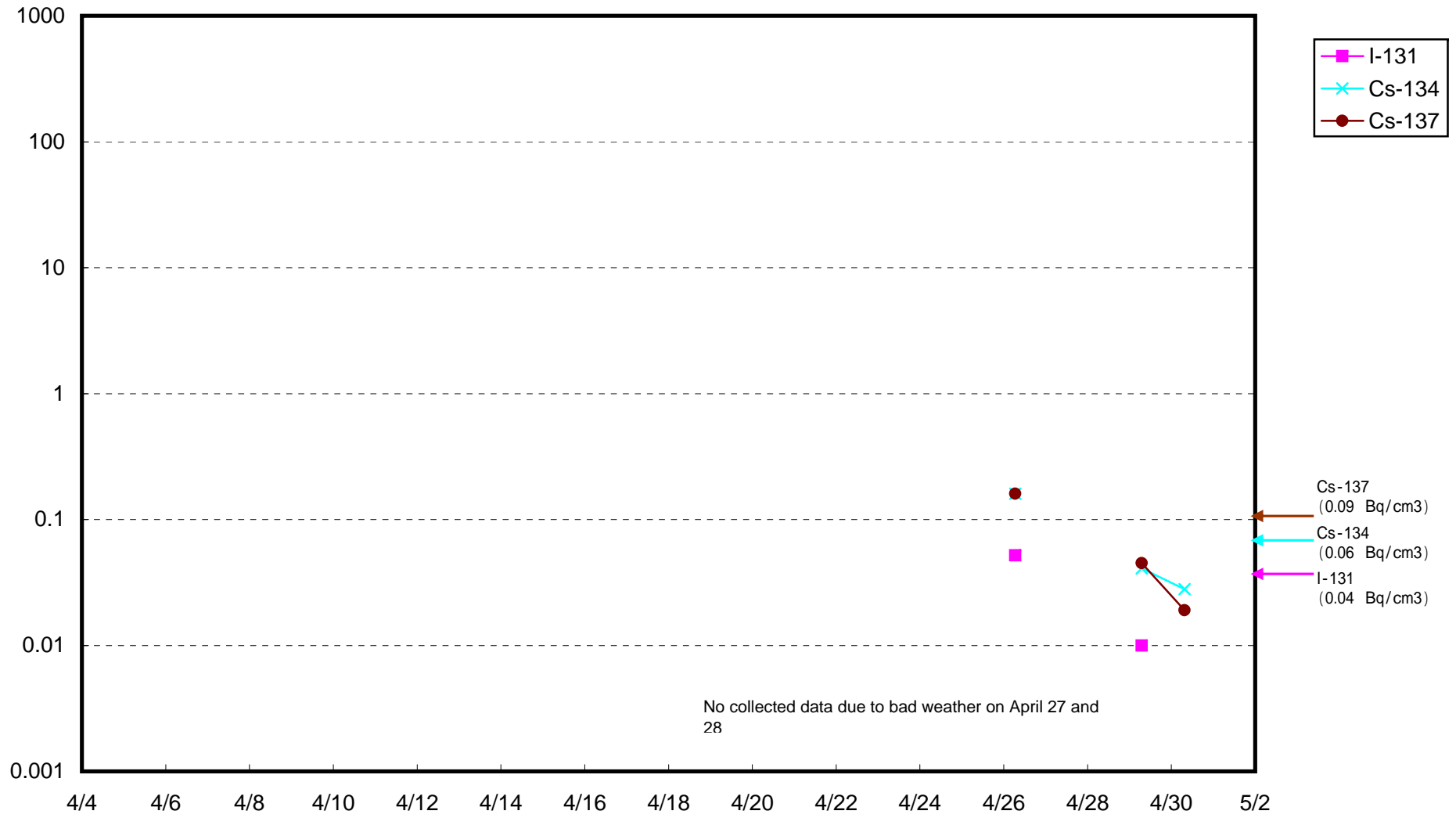
Radioactivity Density of Seawater around 3 km offshore of the north of Iwaki City ( B q / c m 3 )



Radioactivity Density of Seawater around 8 km offshore of Iwasawa Shore ( B q / c m 3 )



Radioactivity Density of Seawater around 3 km offshore of Natsui River ( B q / c m 3 )



Radioactivity Density of Seawater around 3 km offshore of Onahama port ( B q / c m 3 )

