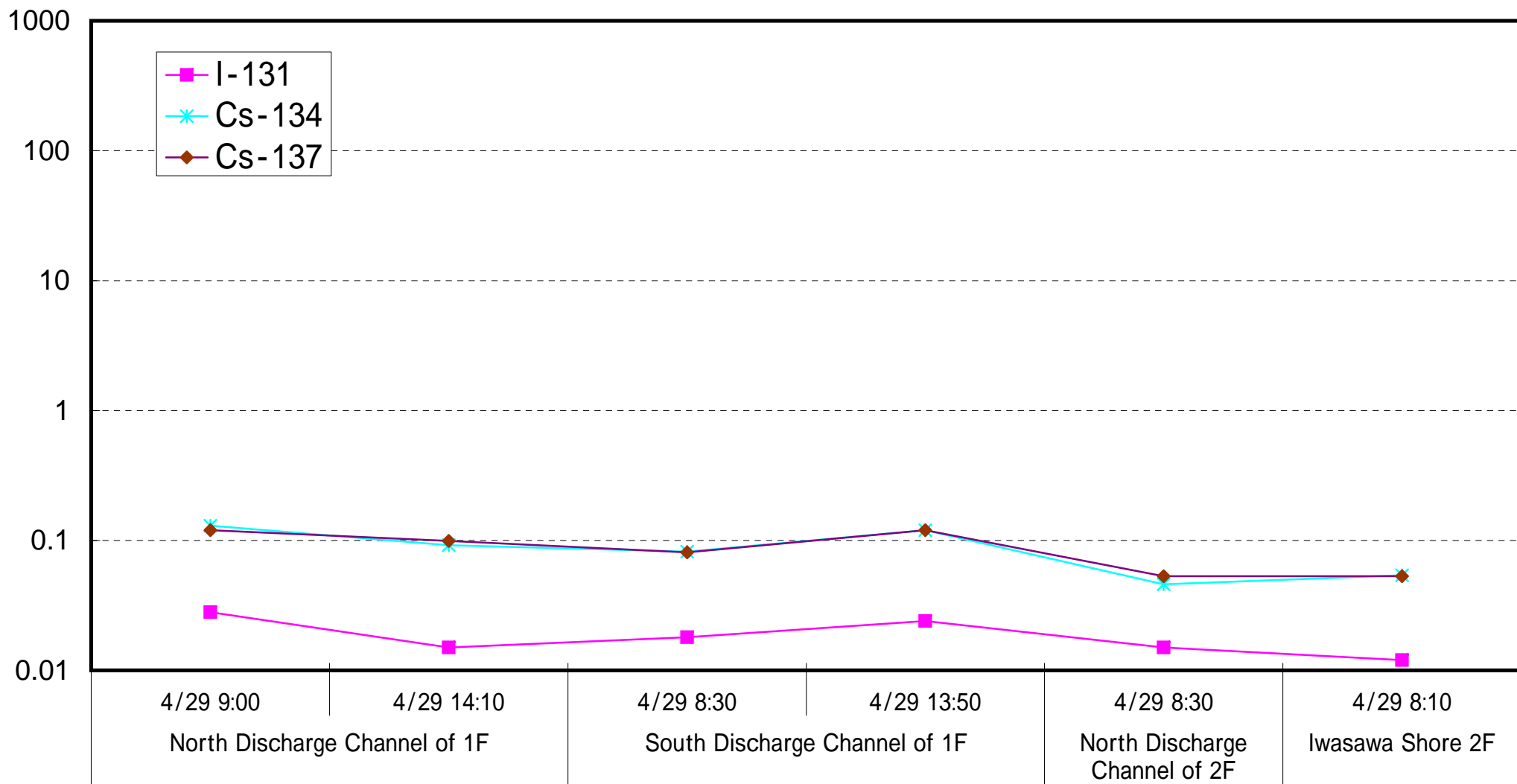
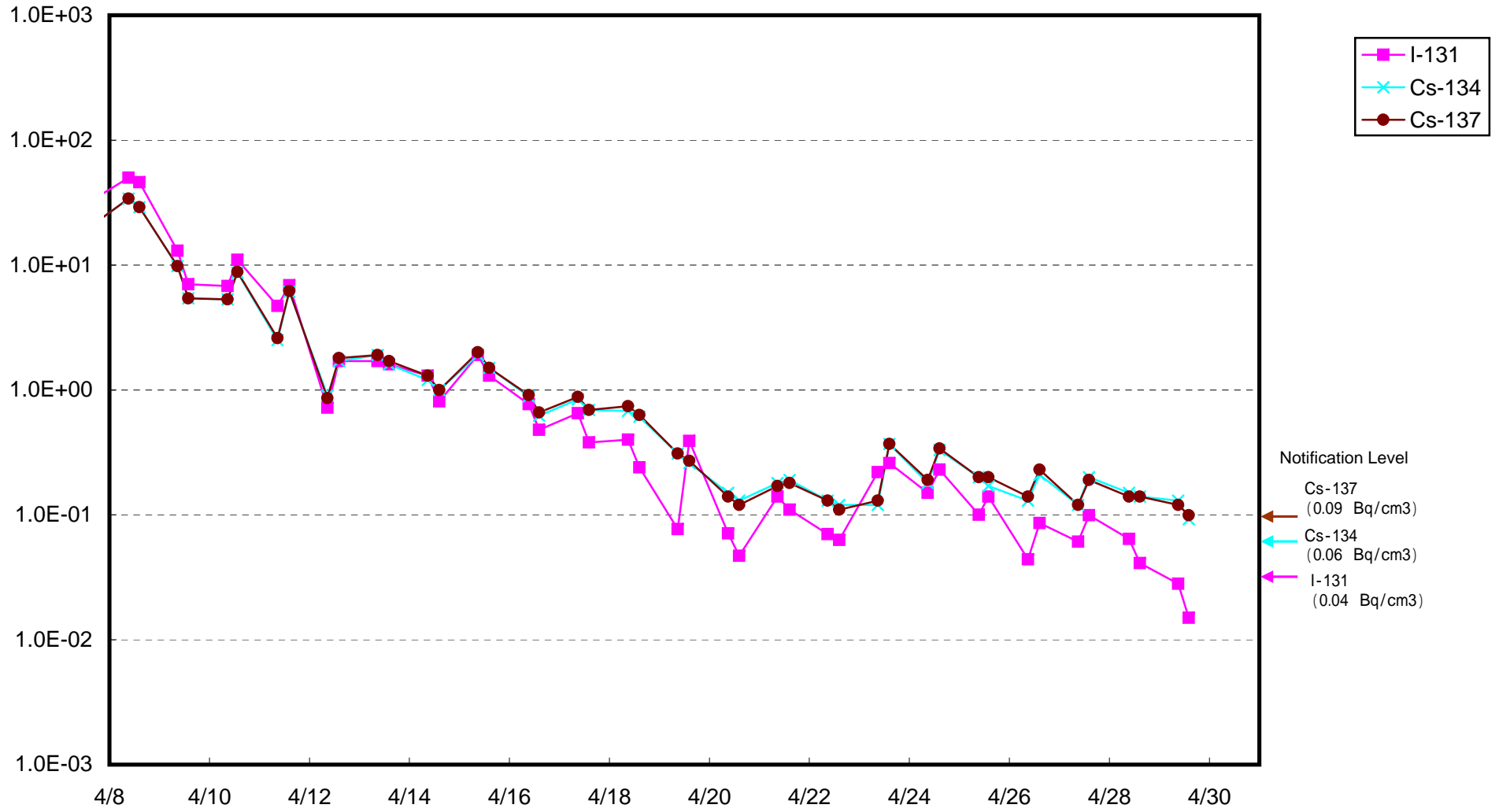


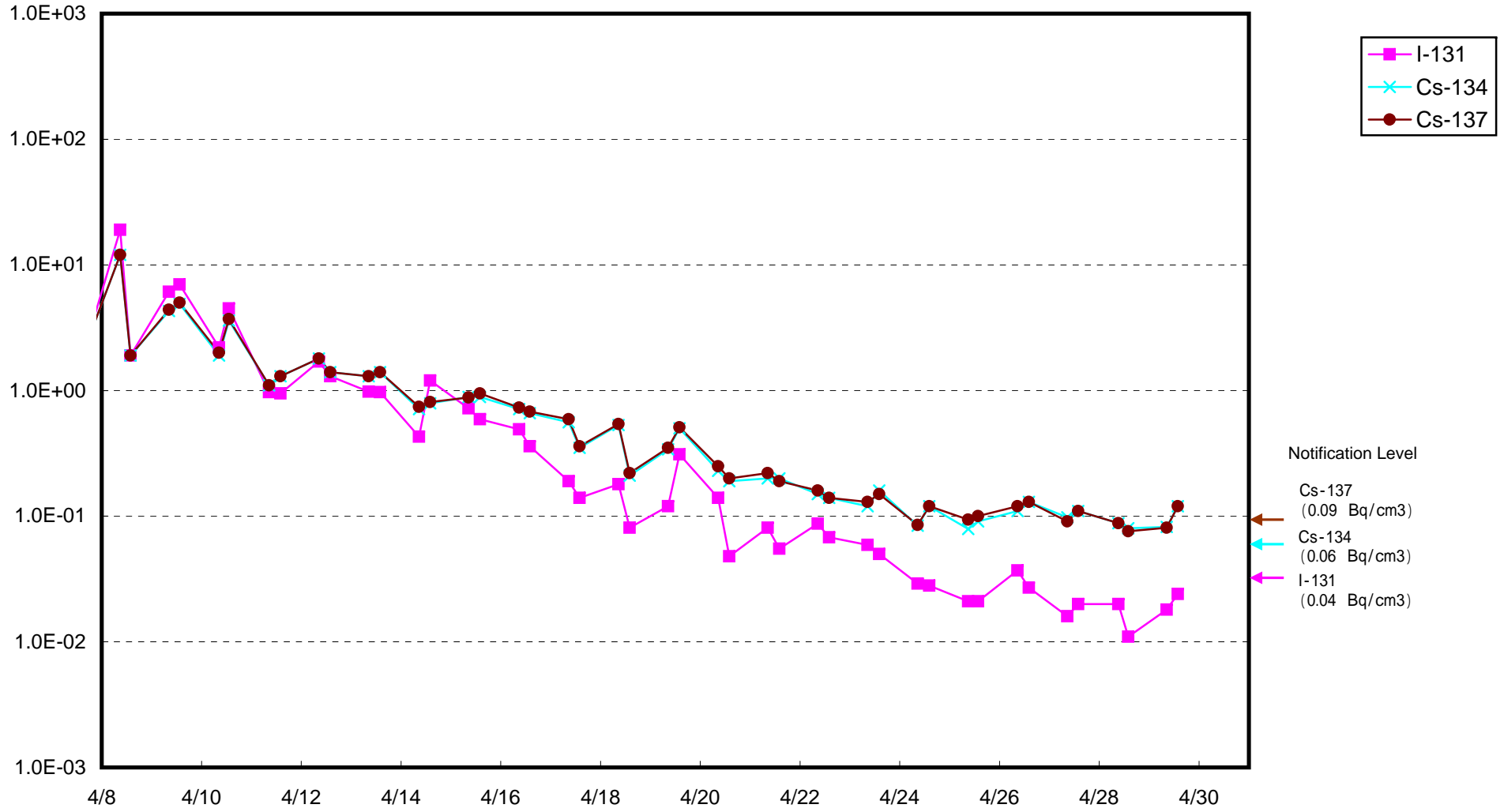
Radioactive Density of Seawater (B q / c m3)



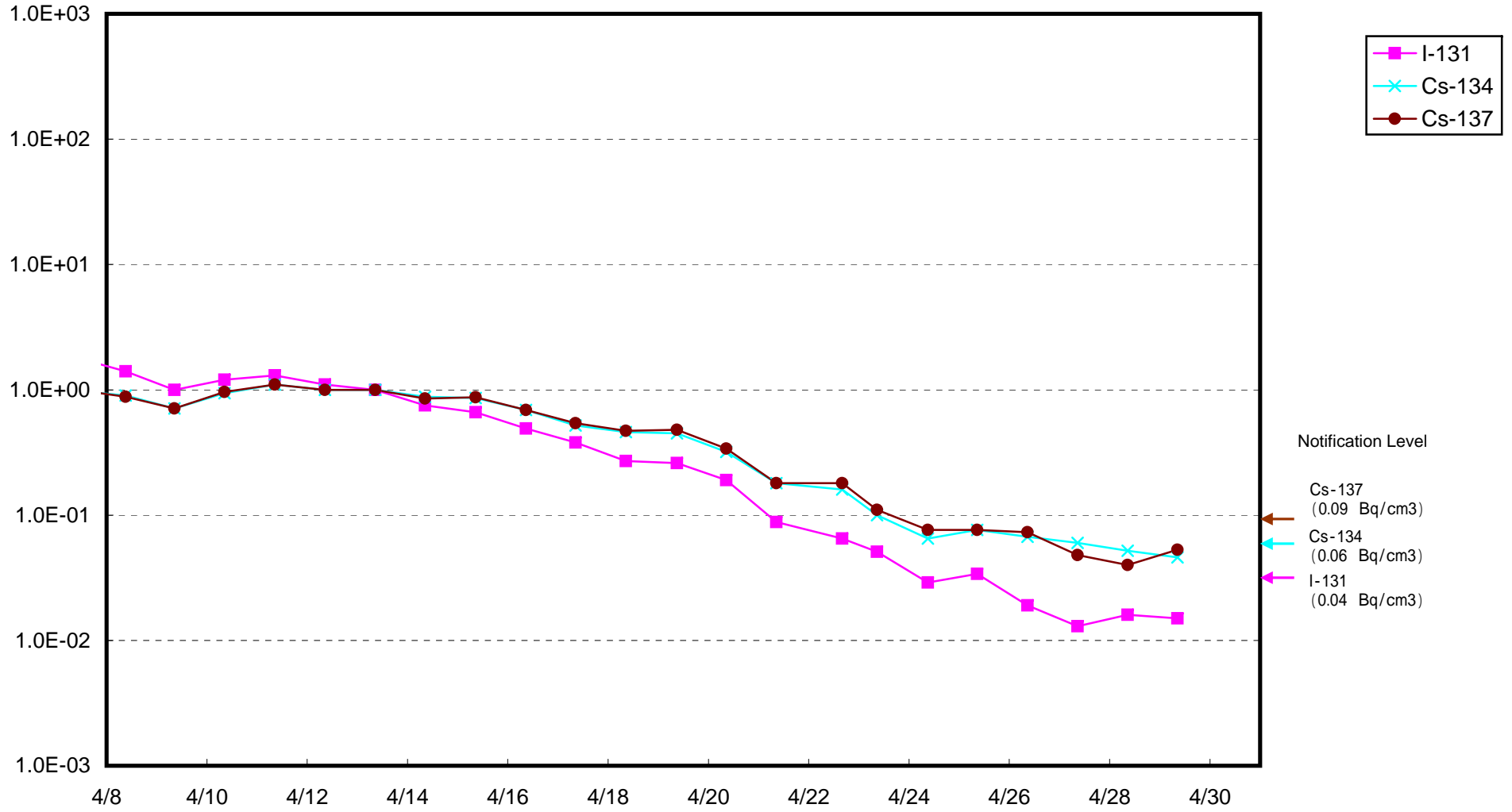
Radioactivity Density of Seawater at North of 1F5-6 Discharge Channel (approx.30m north of 5-6 discharge channel)
(Bq/cm³)



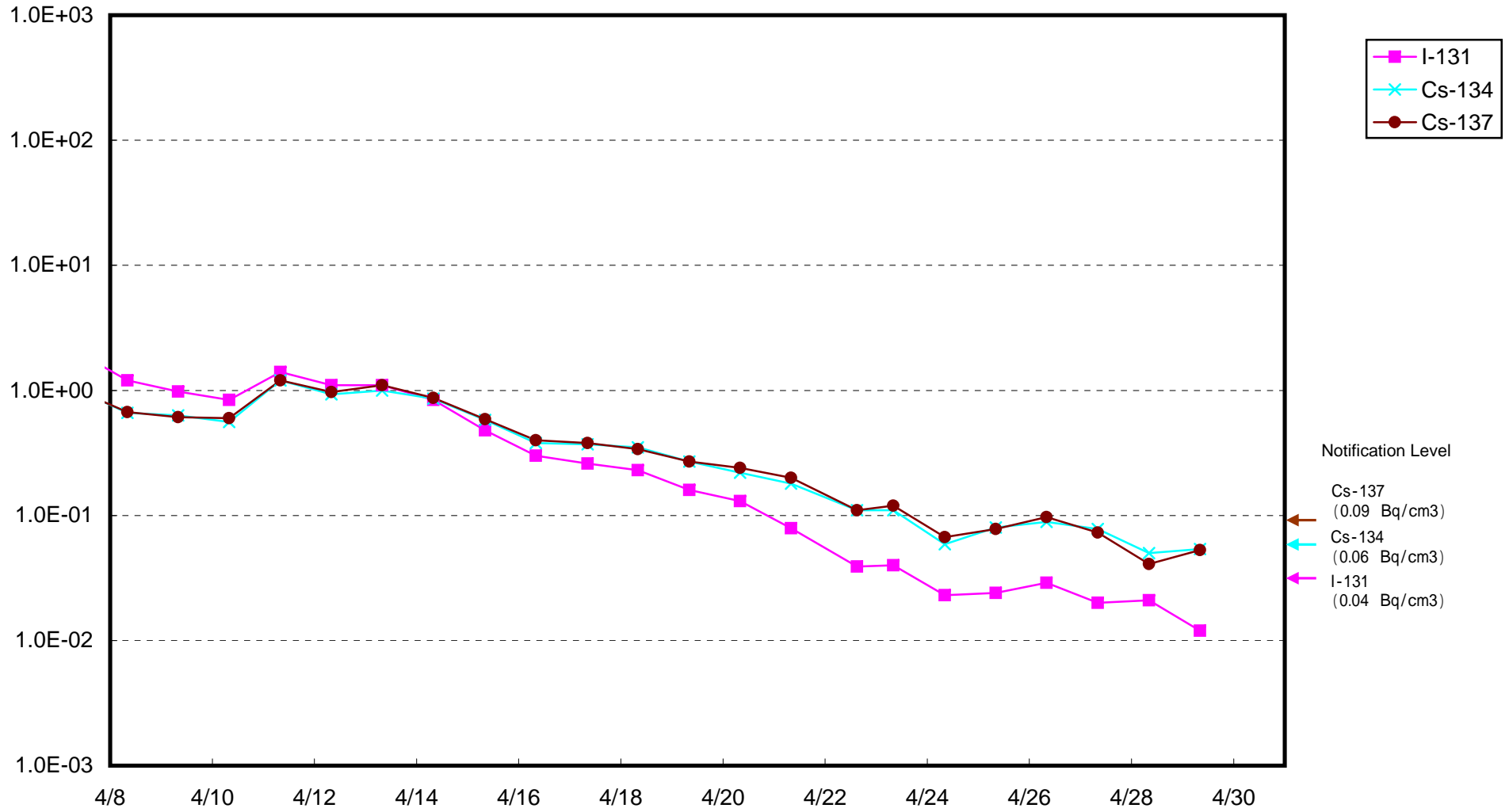
Radioactivity Density of Seawater at South Discharge Channel of 1F (Bq/cm³)



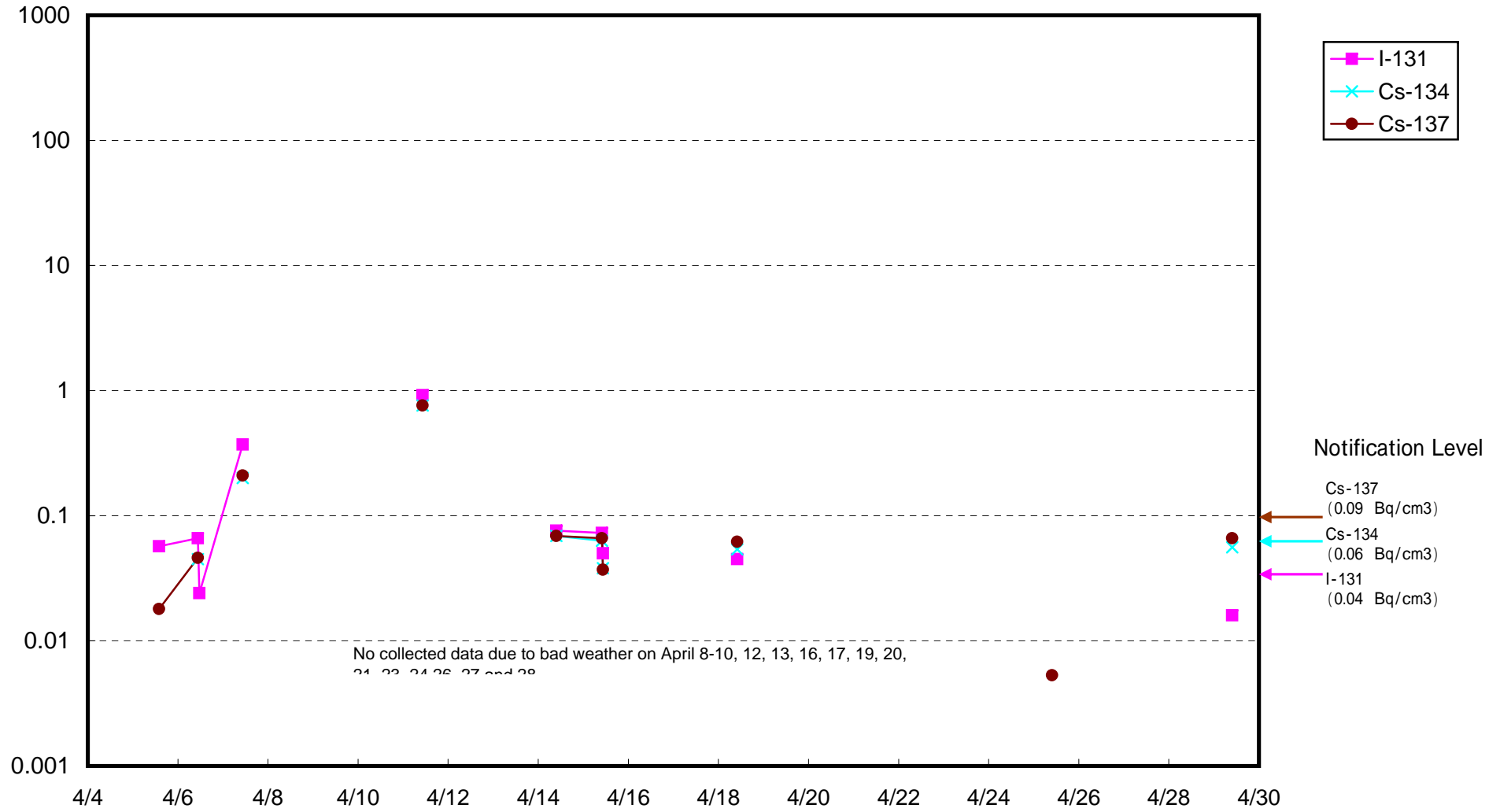
Radioactivity Density of Seawater at North Discharge Channel of 2F (Bq/cm³)



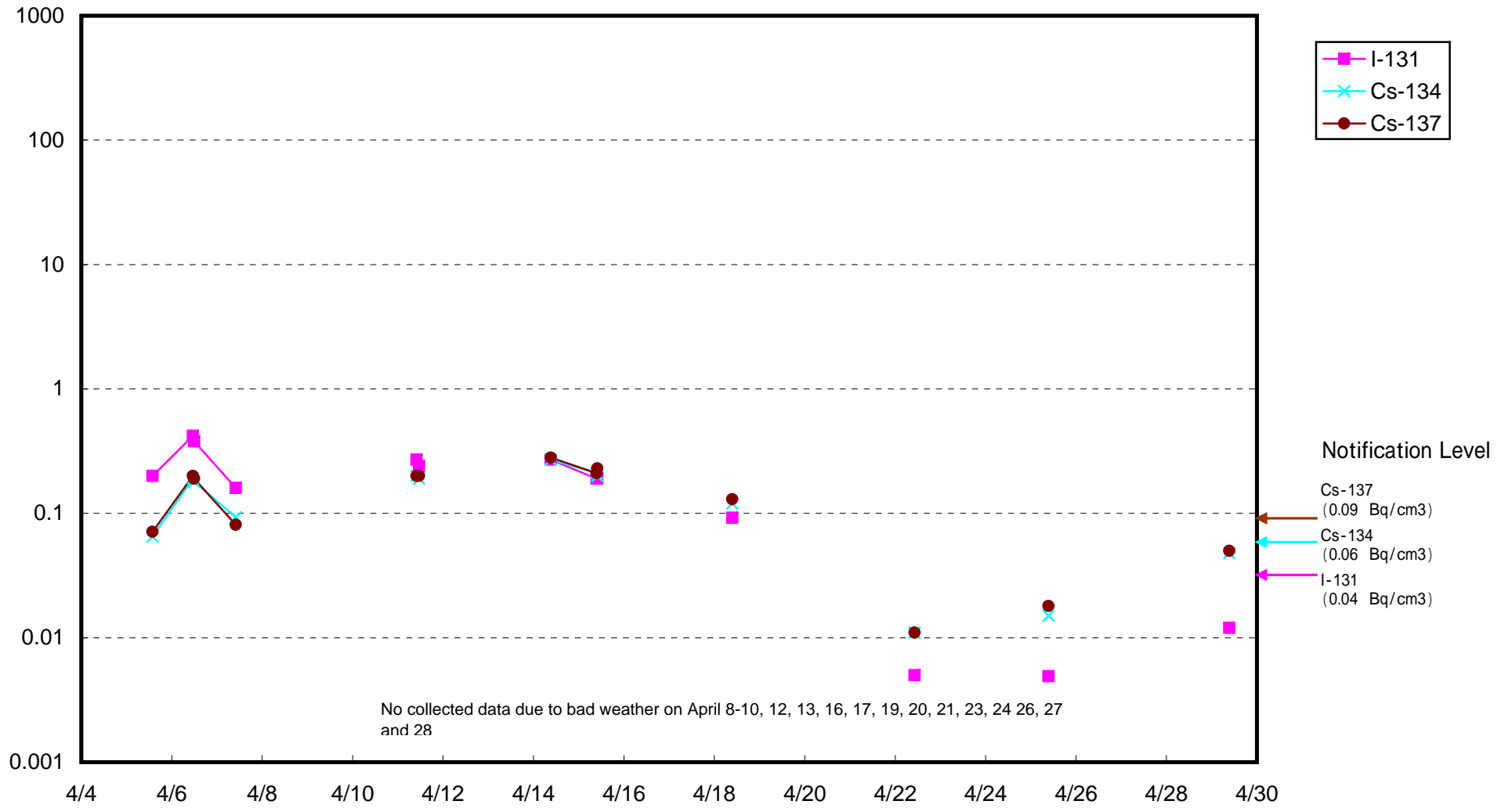
Radioactivity Density of Seawater at Iwasawa Shore 2F (Bq/cm³)



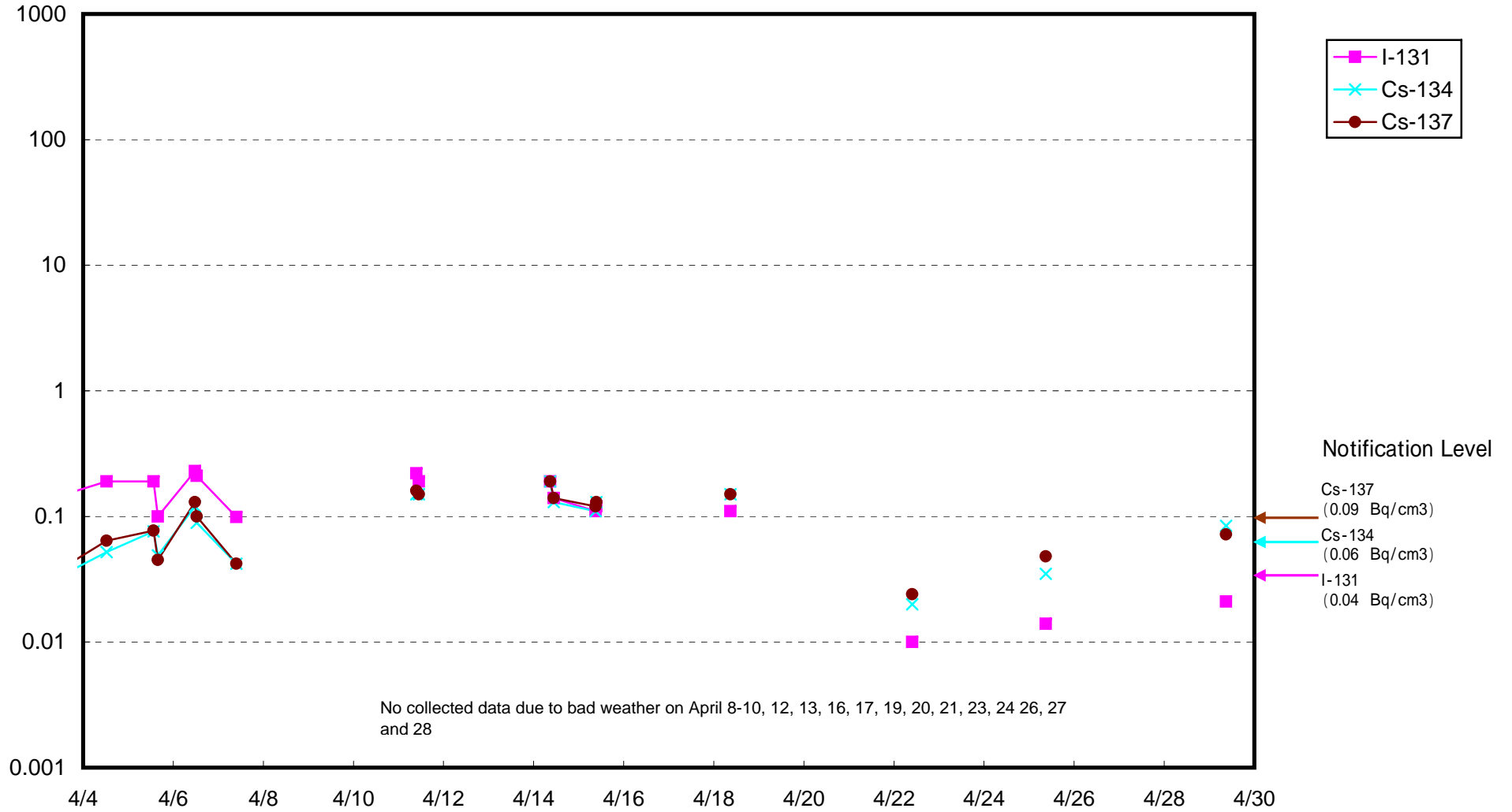
Radioactivity Density of Seawater around approx. 15 km offshore of Minami Souma City (B q / c m 3)



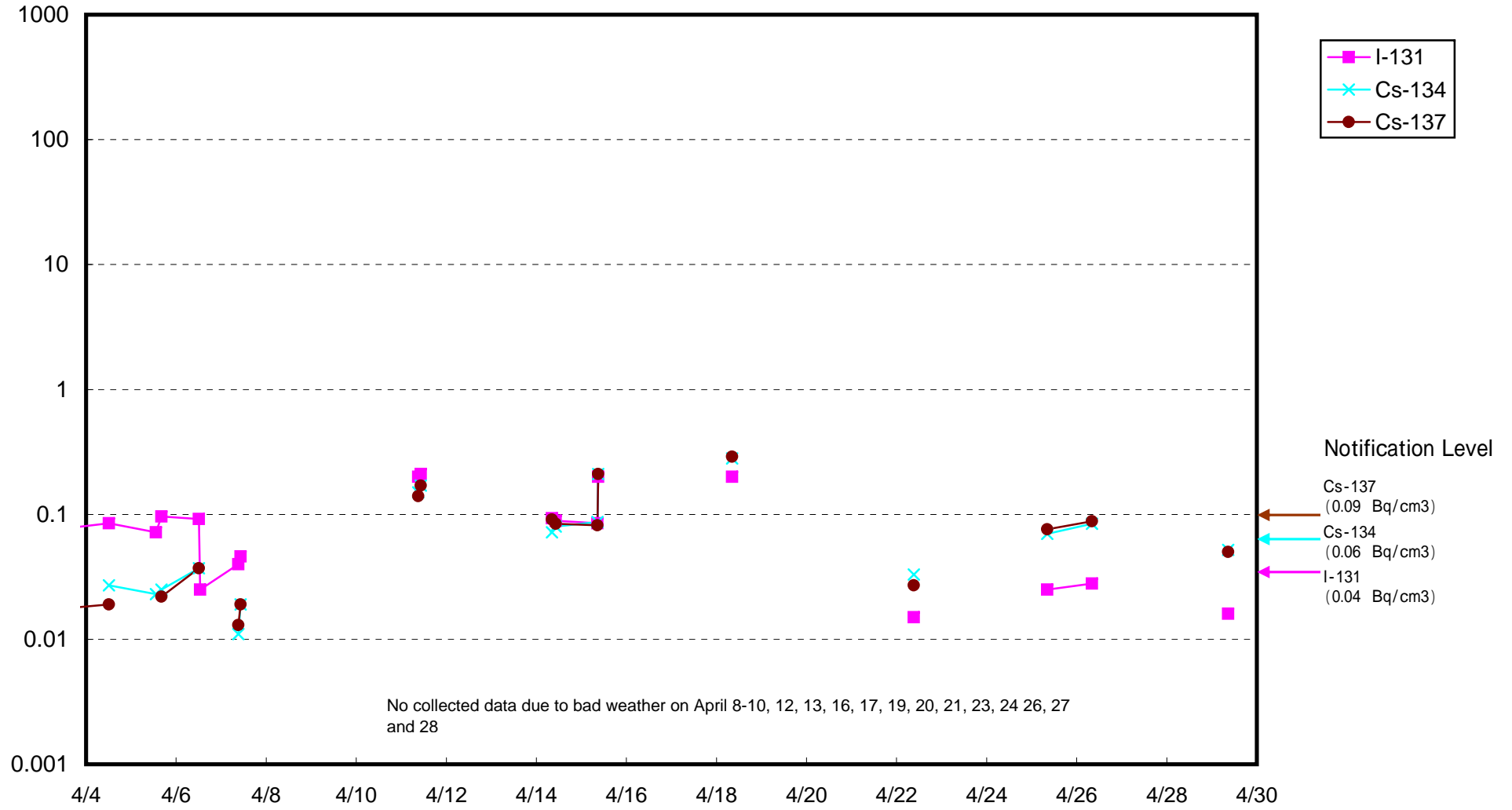
Radioactivity Density of Seawater around approx. 15 km offshore of Ukedo-River (B q / c m 3)



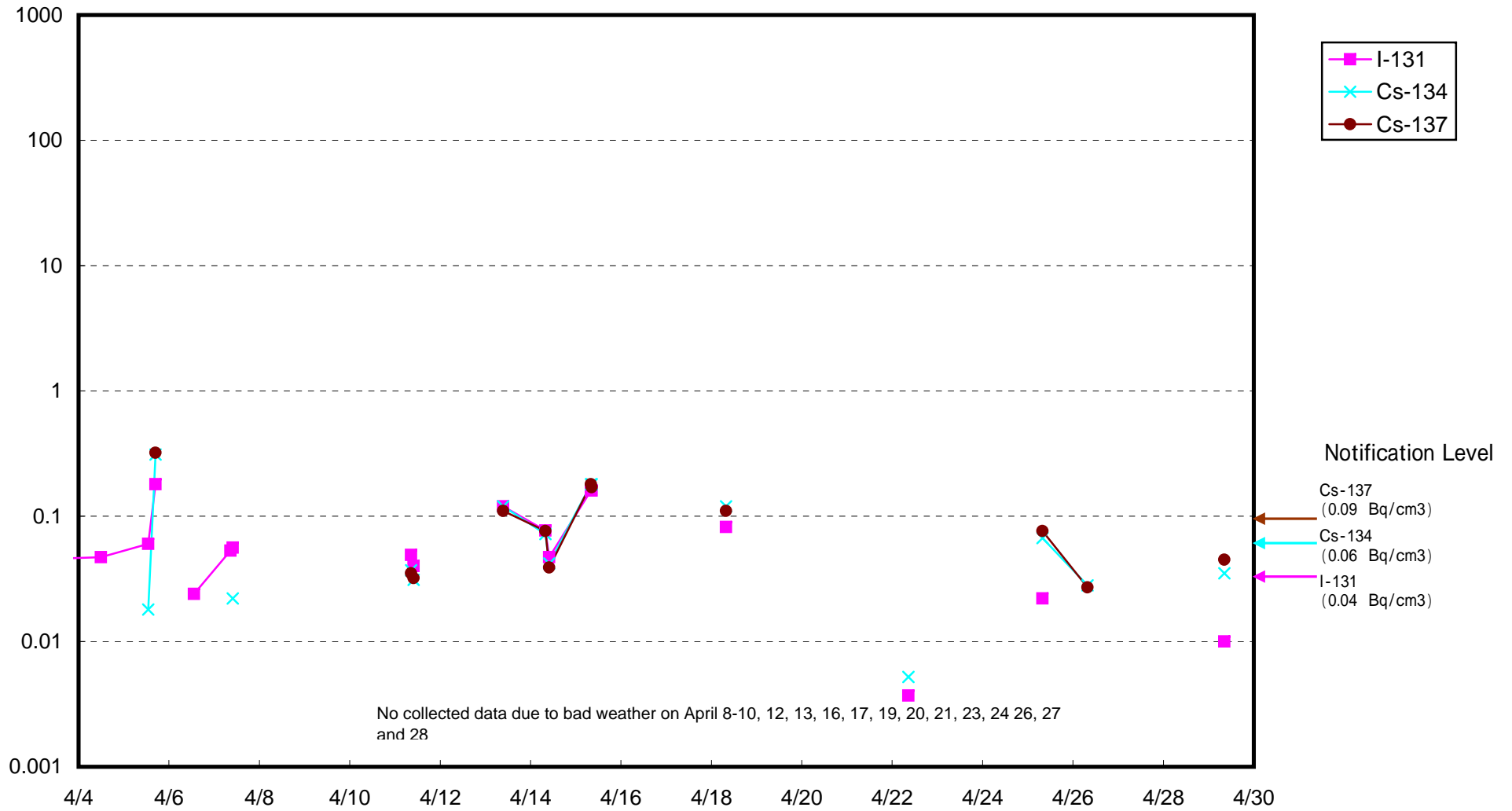
Radioactivity Density of Seawater around approx. 15 km offshore of the site of Fukushima Daiichi (B q / c m 3)



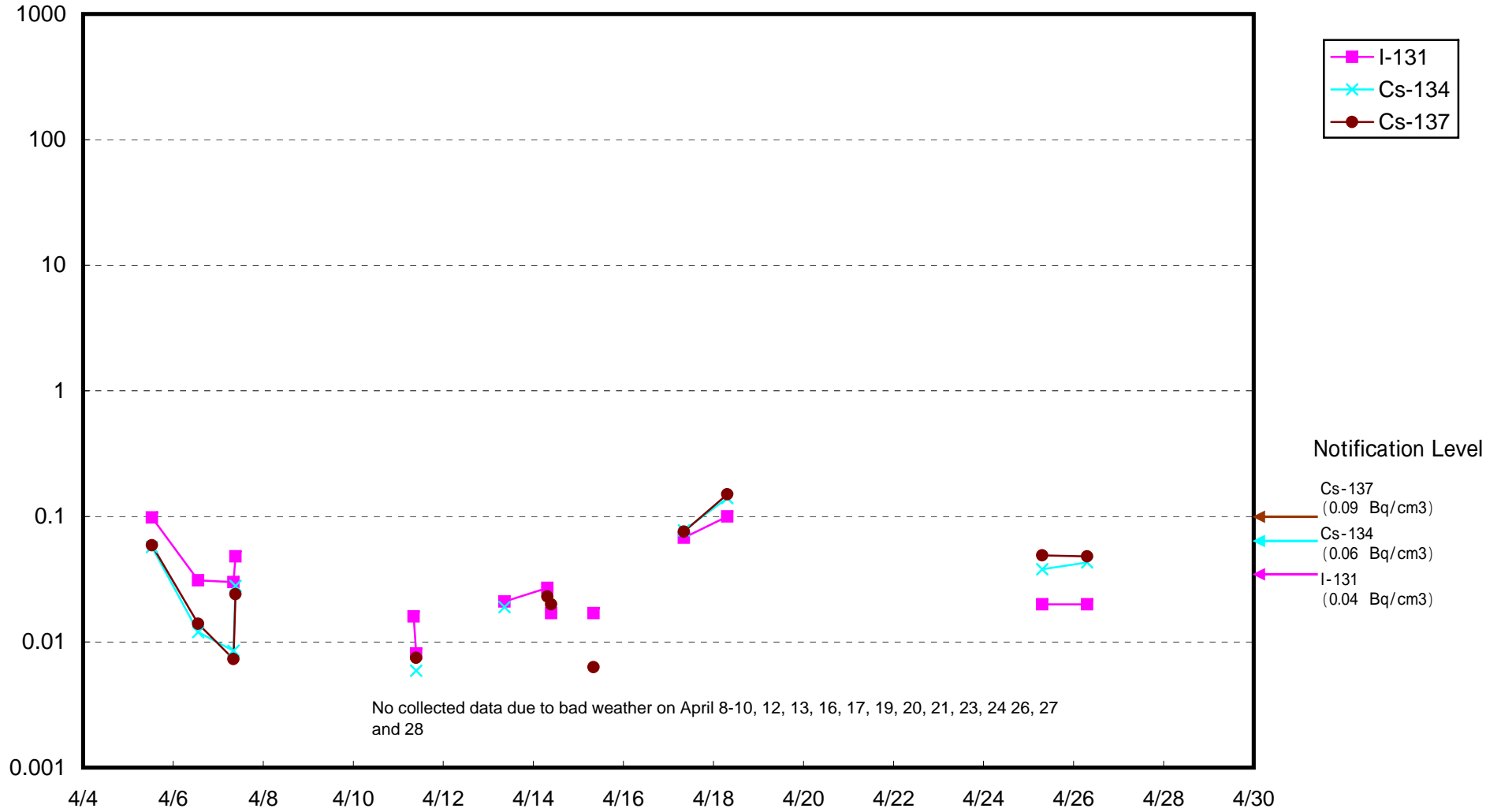
Radioactivity Density of Seawater around approx. 15 km offshore of the site of Fukushima Daini (B q / c m 3)



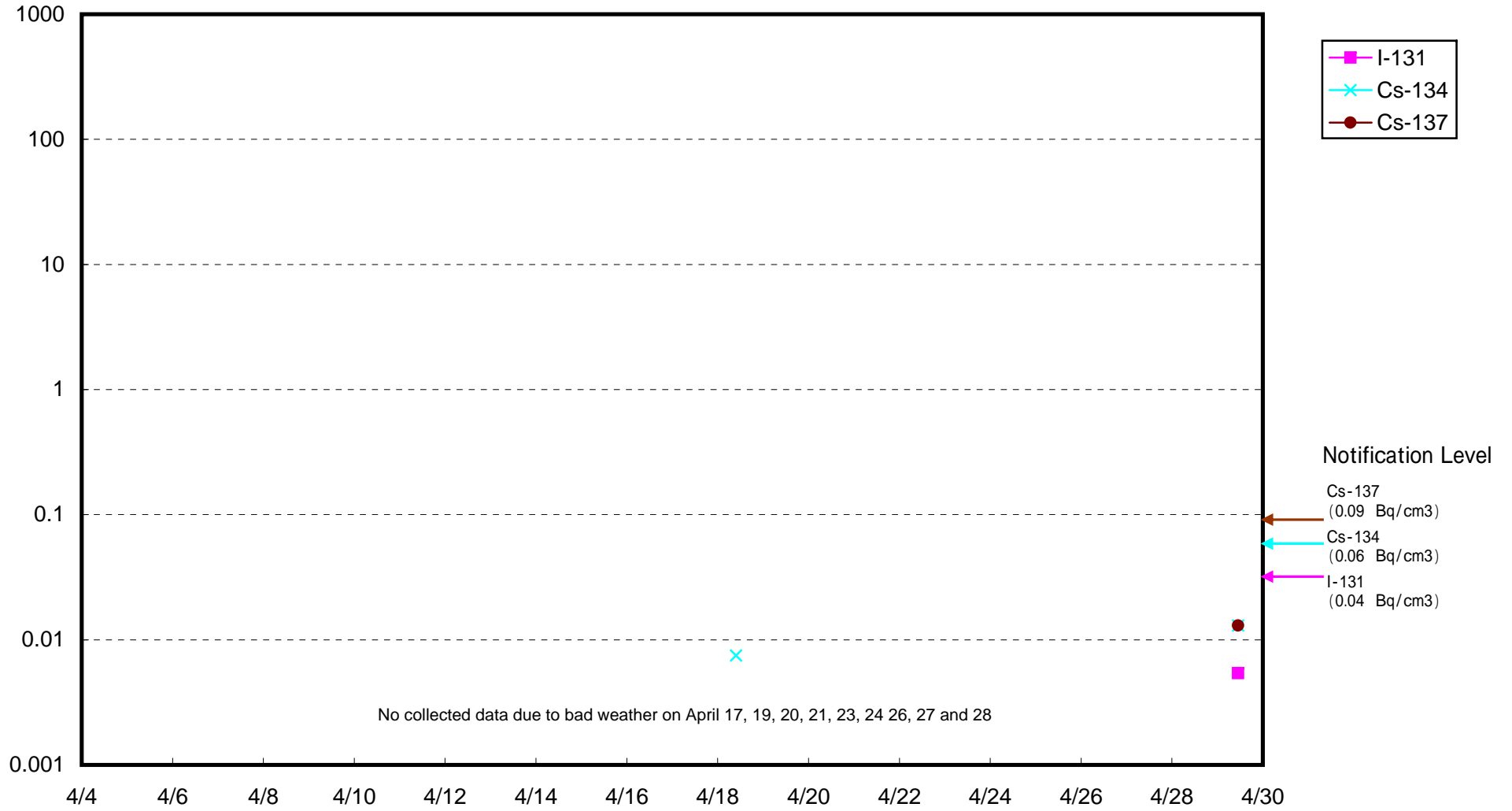
Radioactivity Density of Seawater around approx. 15 km offshore of Iwasawa Shore (B q / c m 3)



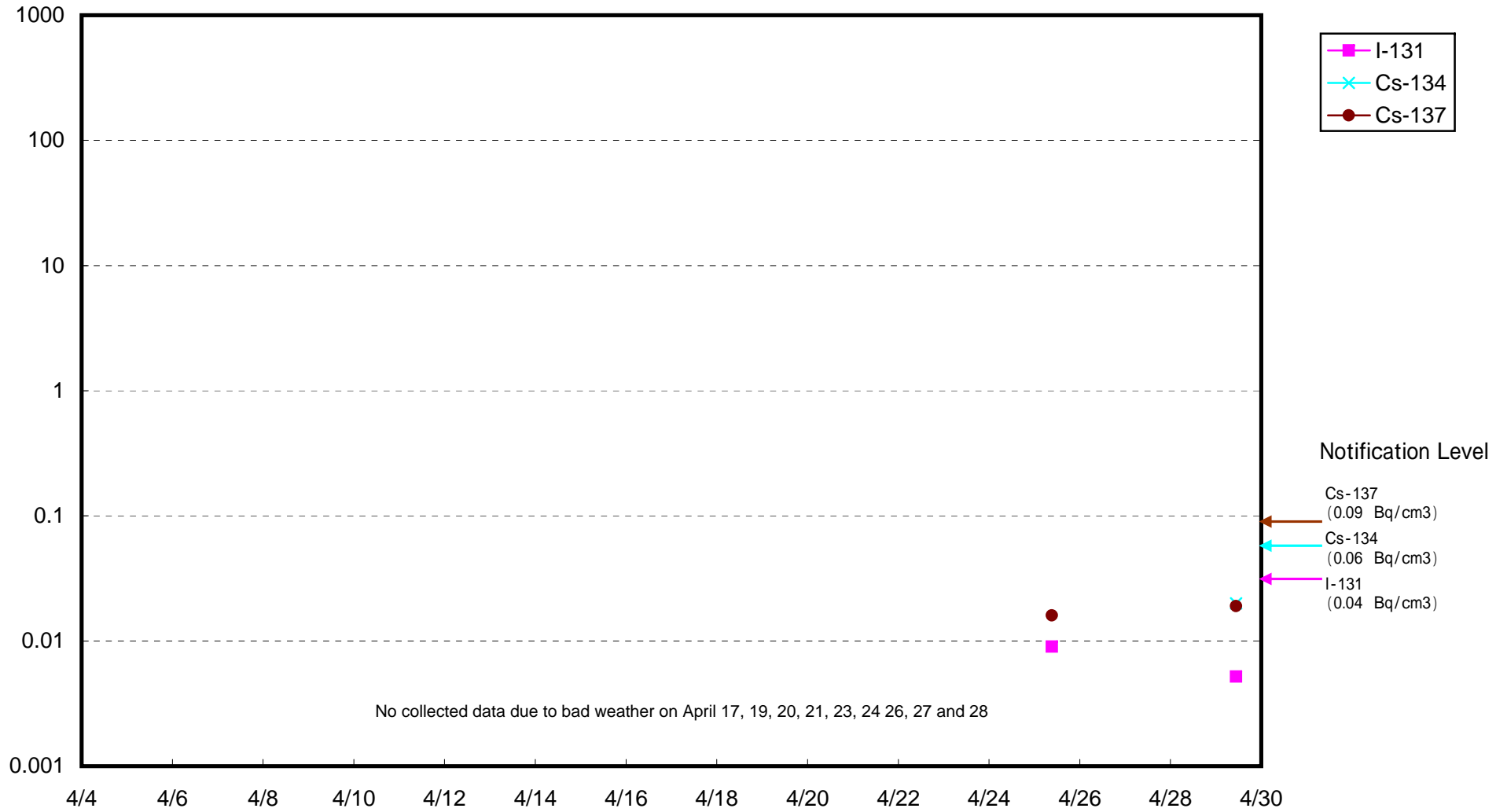
Radioactivity Density of Seawater around approx. 15 km offshore of Hirono-machi (Bq / c m 3)



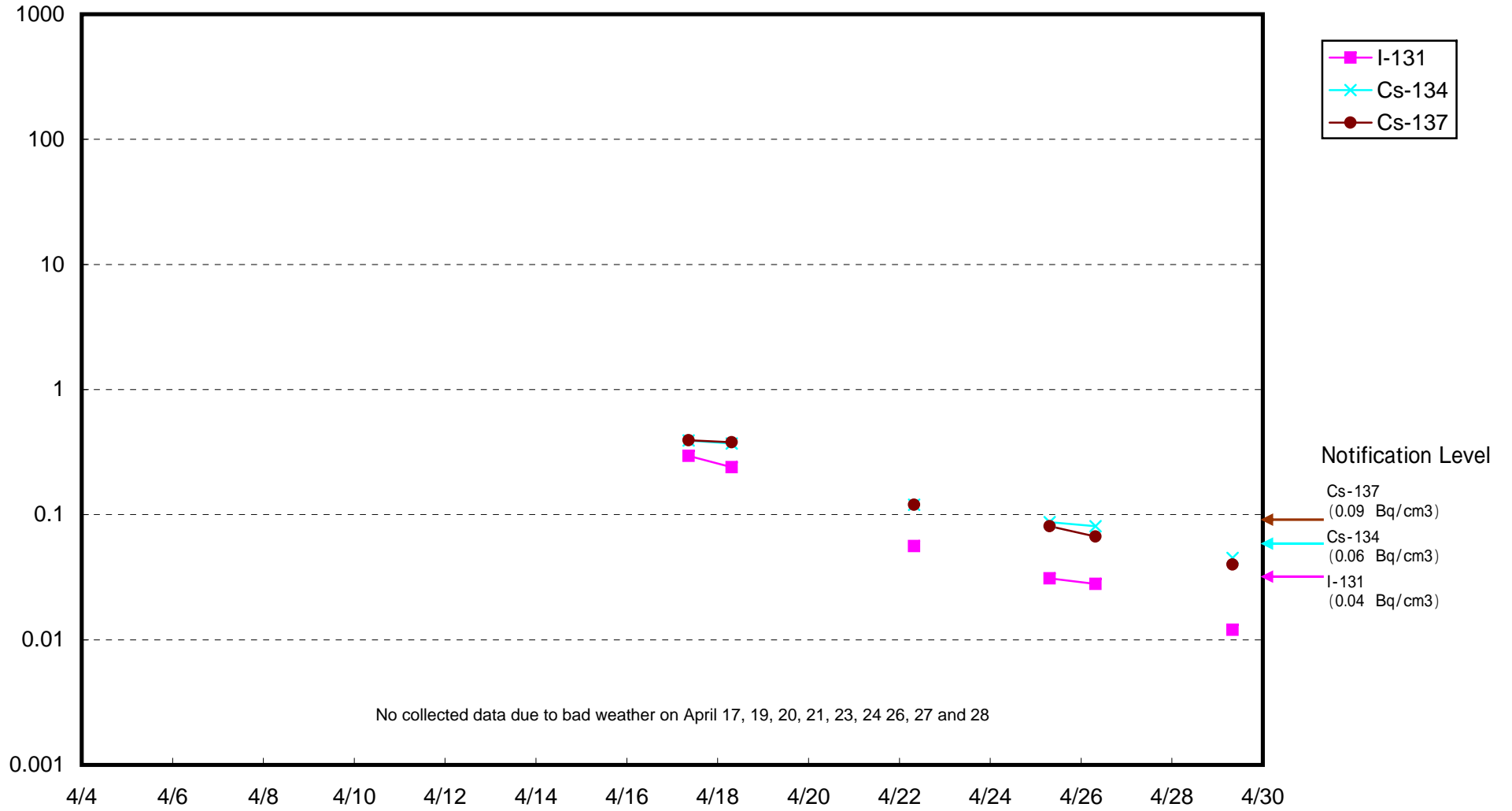
Radioactivity Density of Seawater around 3 km offshore of Haramachi-ku (B q / c m 3)



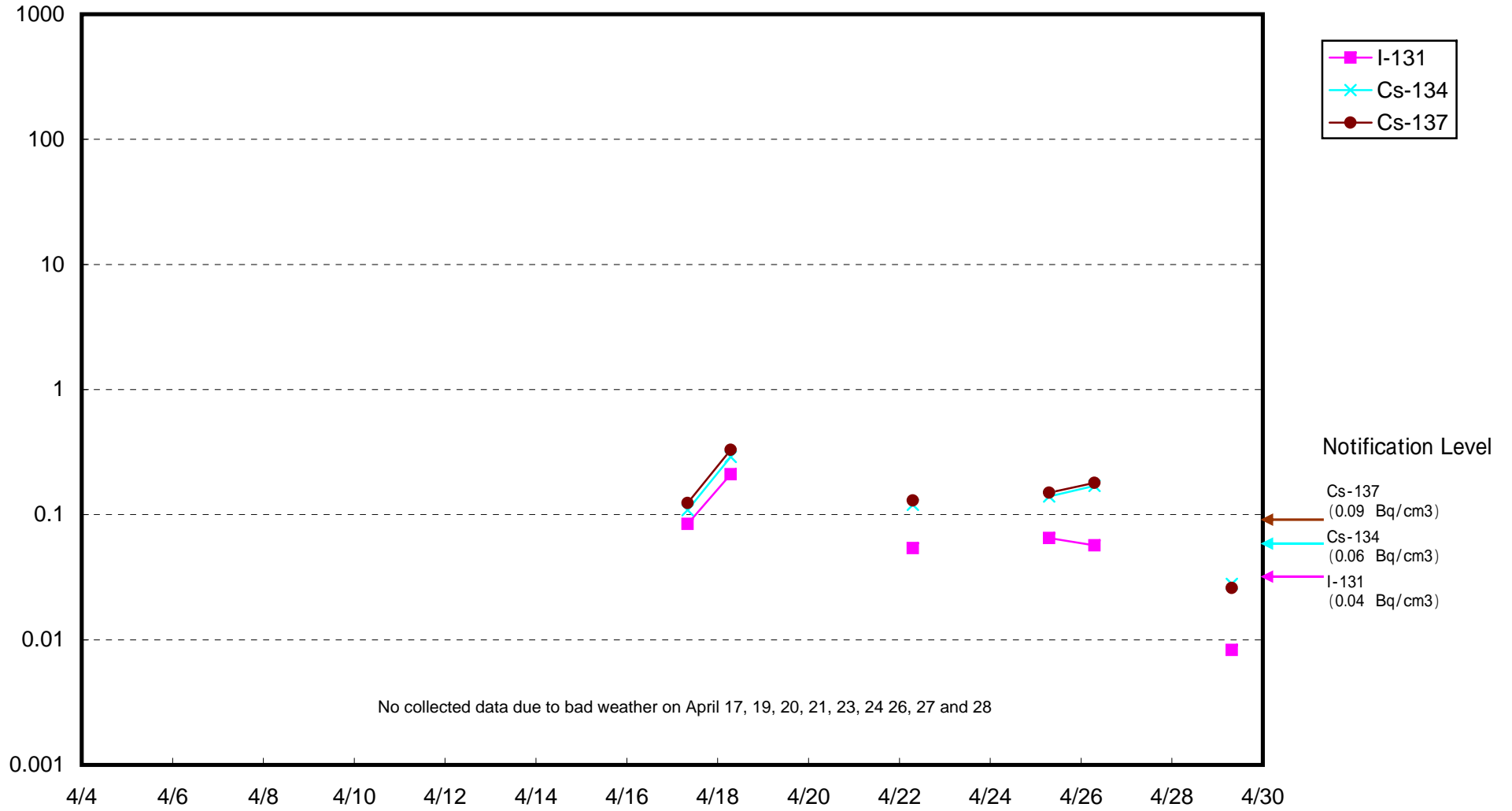
Radioactivity Density of Seawater around 3 km offshore of Odaka-ku (Bq / cm³)



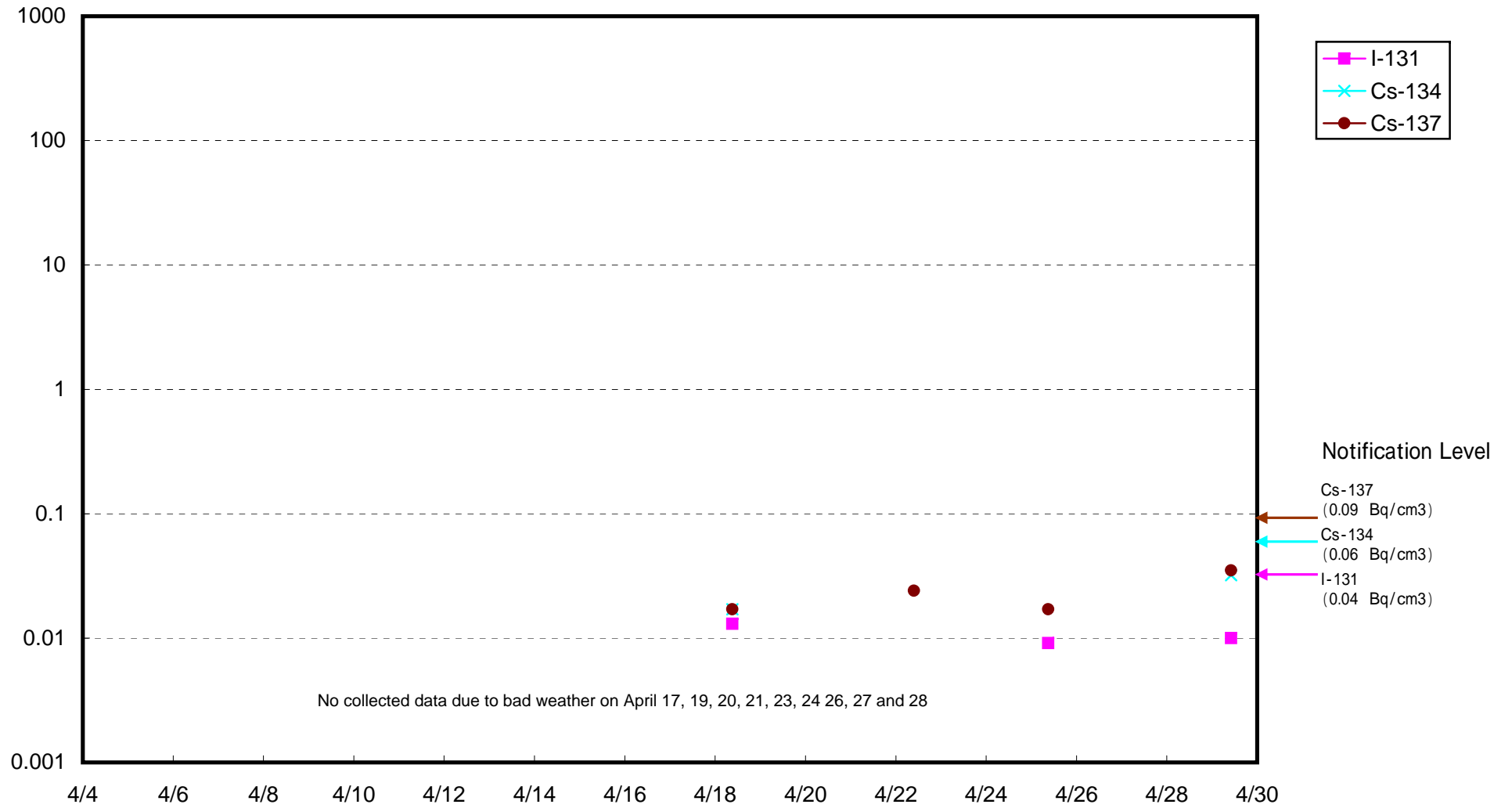
Radioactivity Density of Seawater around 3 km offshore of Iwasawa Shore (B q / c m 3)



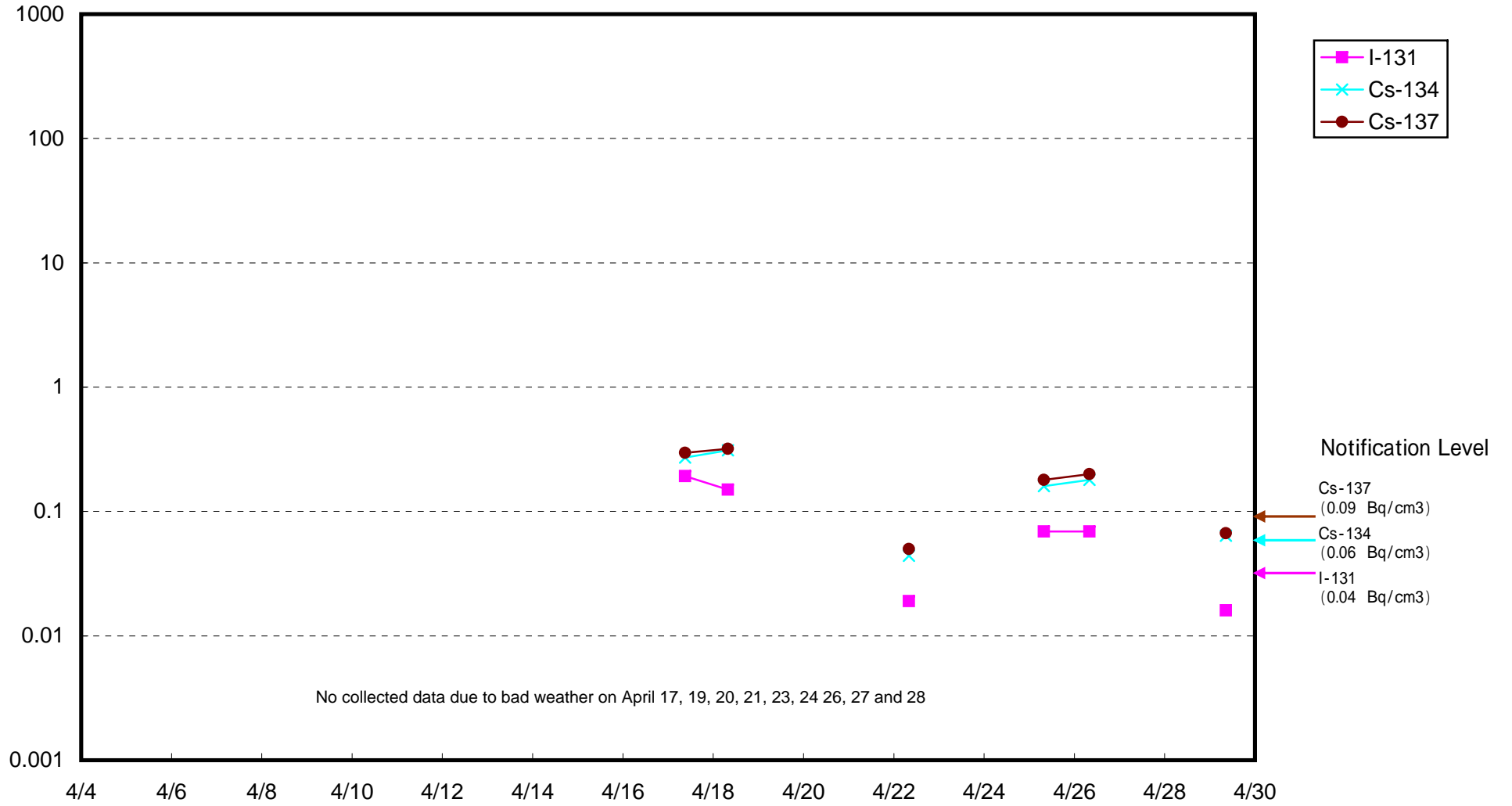
Radioactivity Density of Seawater around 3 km offshore of the north of Iwaki City (B q / c m 3)



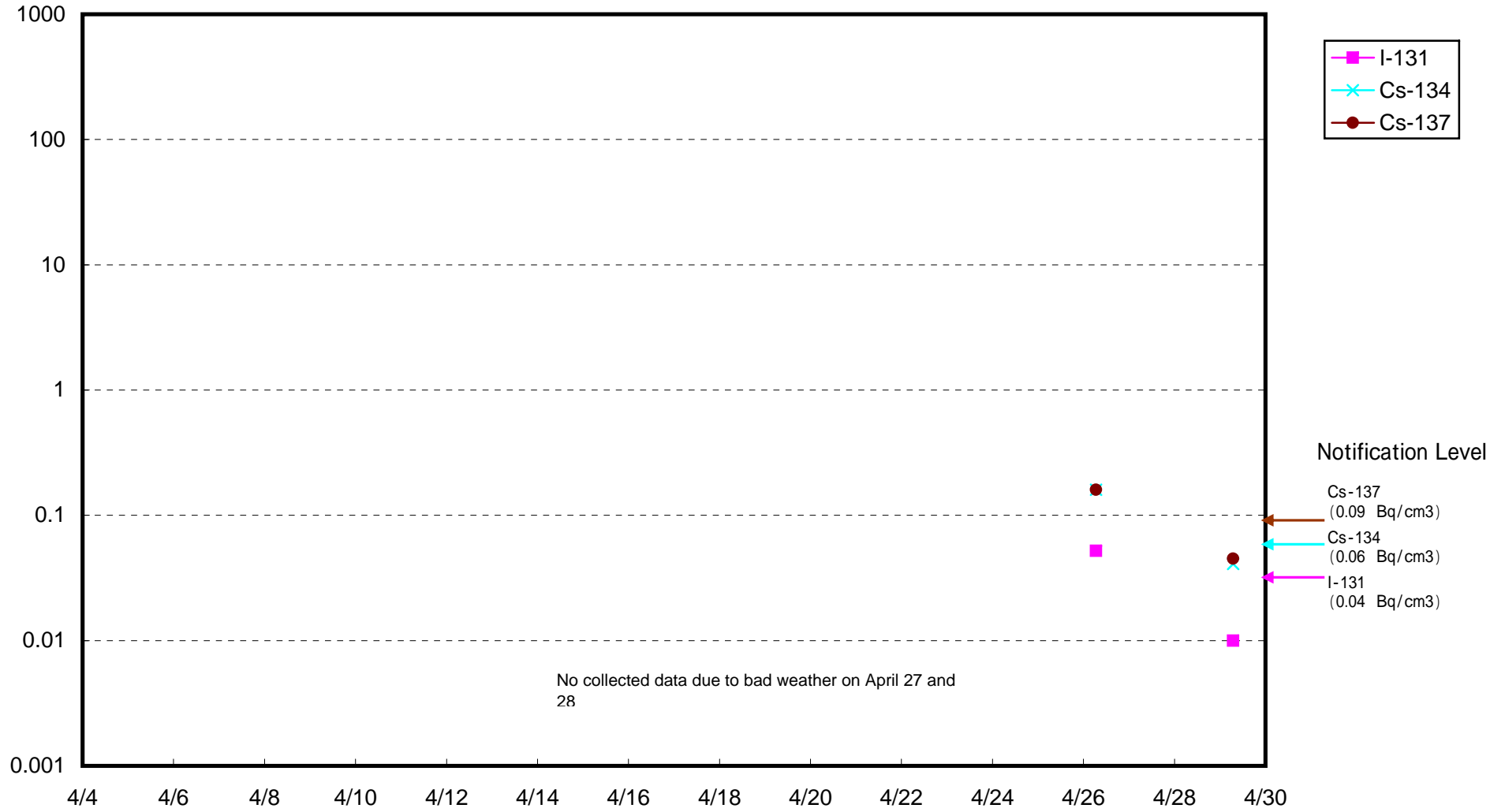
Radioactivity Density of Seawater around 8 km offshore of Odaka-ku
(B q / c m 3)



Radioactivity Density of Seawater around 8 km offshore of Iwasawa Shore (B q / c m 3)



Radioactivity Density of Seawater around 8 km offshore of Natsui River (B q / c m 3)



Radioactivity Density of Seawater around 8 km offshore of Onahama port (B q / c m 3)

