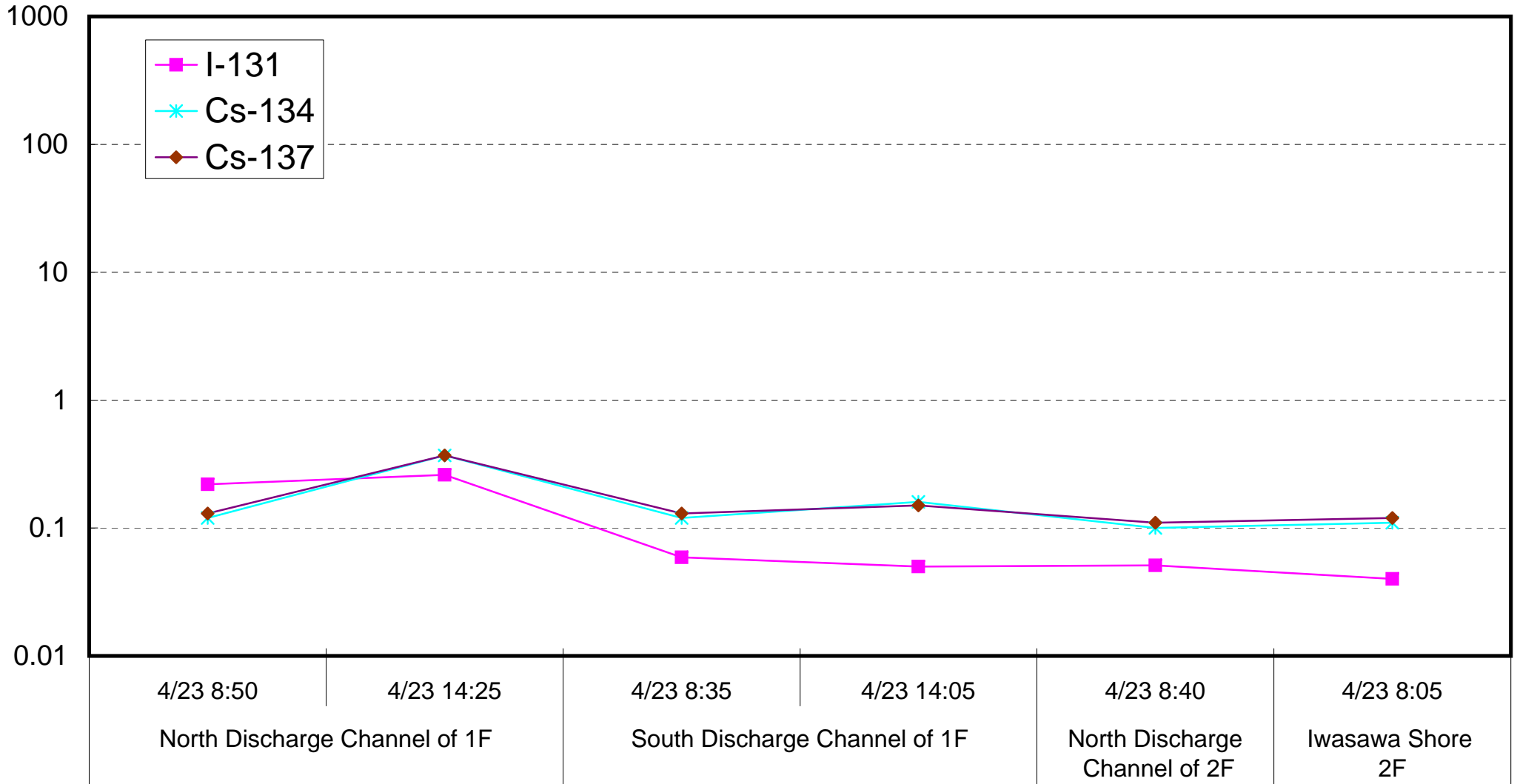
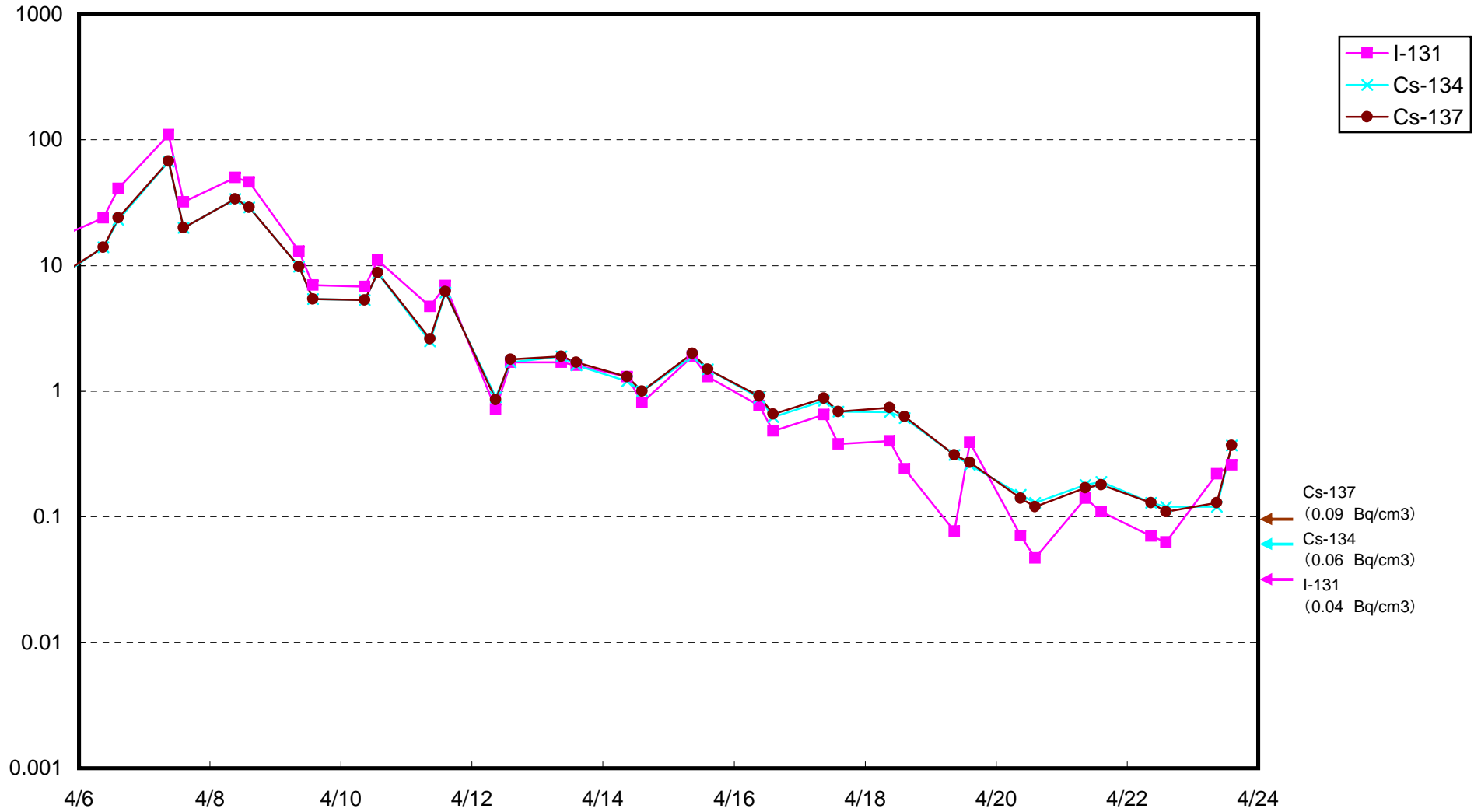


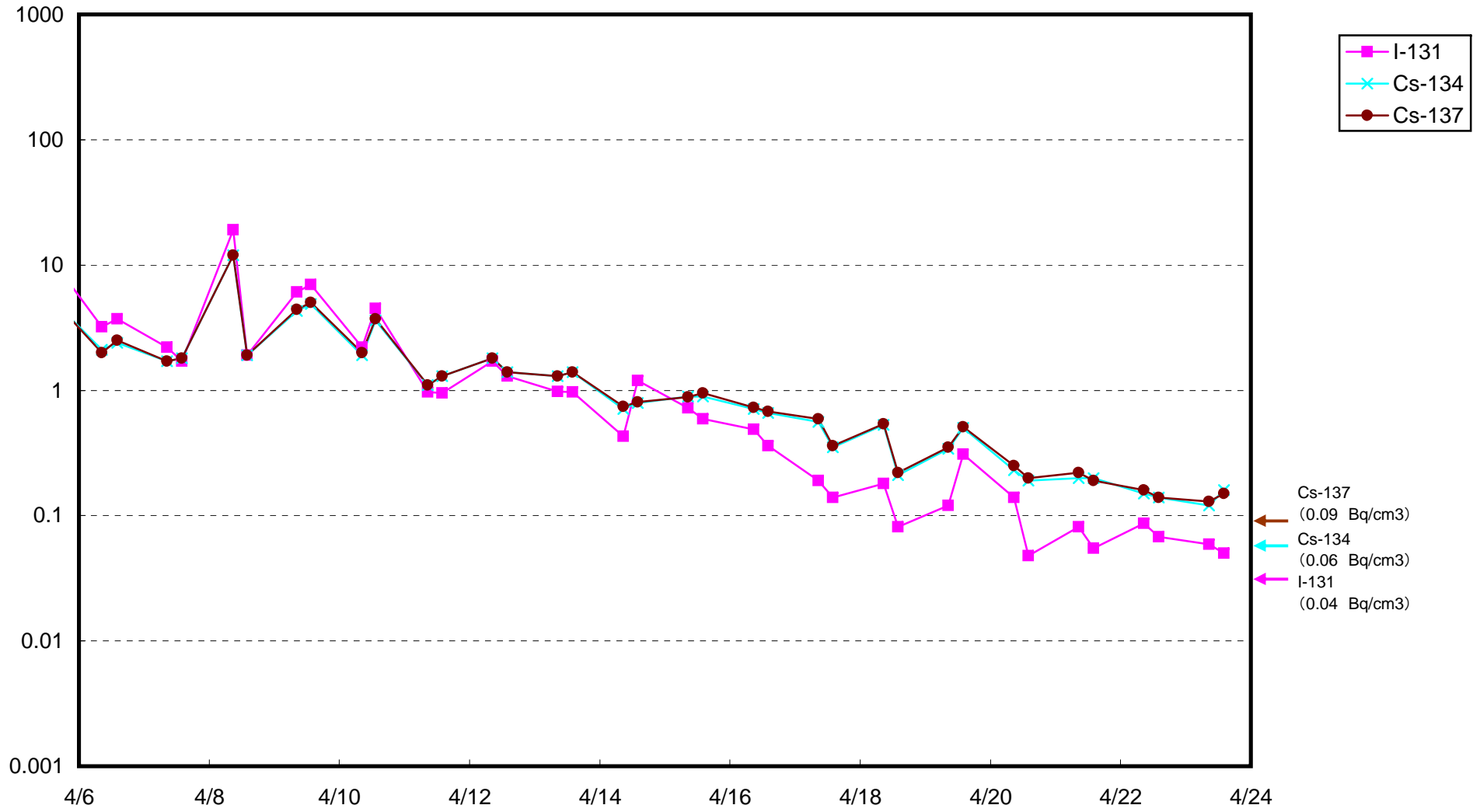
Radioactivity Density of Seawater (Bq/cm<sup>3</sup>)



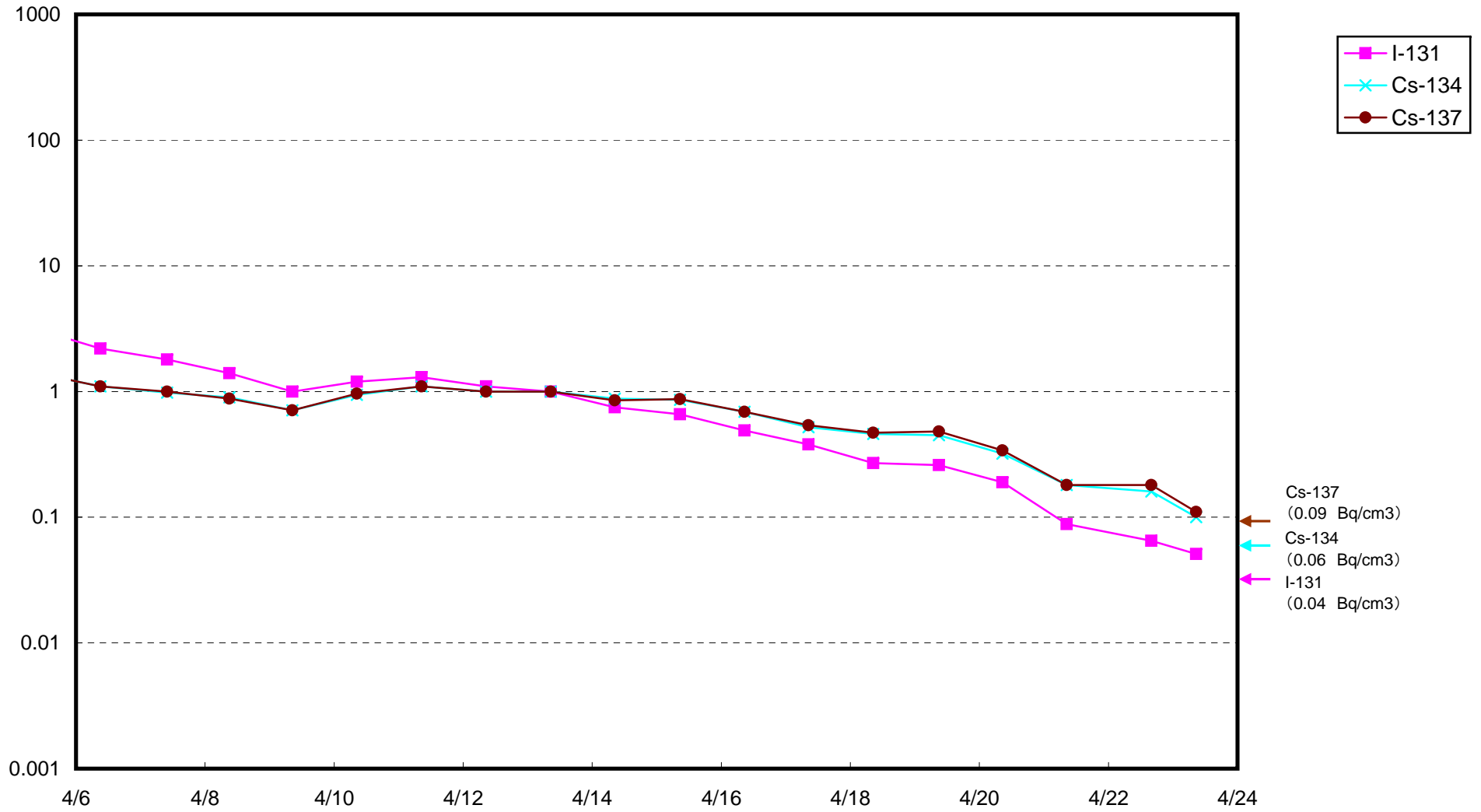
Radioactivity Density of Seawater at North of 1F5-6 Discharge Channel(approx.30m north of 5-6 discharge channel)  
(Bq/cm<sup>3</sup>)



Radioactivity Density of Seawater at South Discharge Channel of 1F (Bq/cm<sup>3</sup>)



Radioactivity Density of Seawater at North Discharge Channel of 2F (Bq/cm<sup>3</sup>)



Radioactivity Density of Seawater at Iwasawa Shore 2F (Bq/cm<sup>3</sup>)

