

<Exhibit>

April 21, 2011

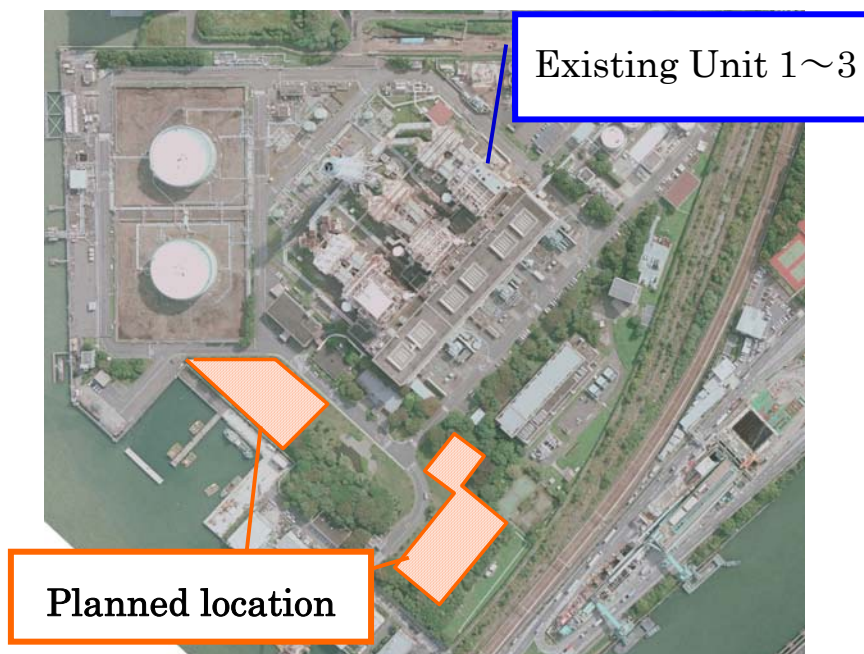
Overview of the plan

Urgent installation of generation facilities at Ooi Thermal Power Station

(1) Generation facilities

Location : 1-2-2 Yashio, Shinagawa City, Tokyo Prefecture
Output : ① 128MW × 1 Unit
 ② 81MW × 1 Unit
Generation type : ① Gas Turbine (1,100°C)
 (Offered from EGAT of Thai for charge free)
 ② Gas Turbine (1,300°C)
Fuel : City Gas
Commence of operation : July 2011 (Scheduled)

(2) Site layout



※ We have asked to the Tokyo metropolitan Government for applying special measure with regard to the exhaust standard in a time of emergency.

END