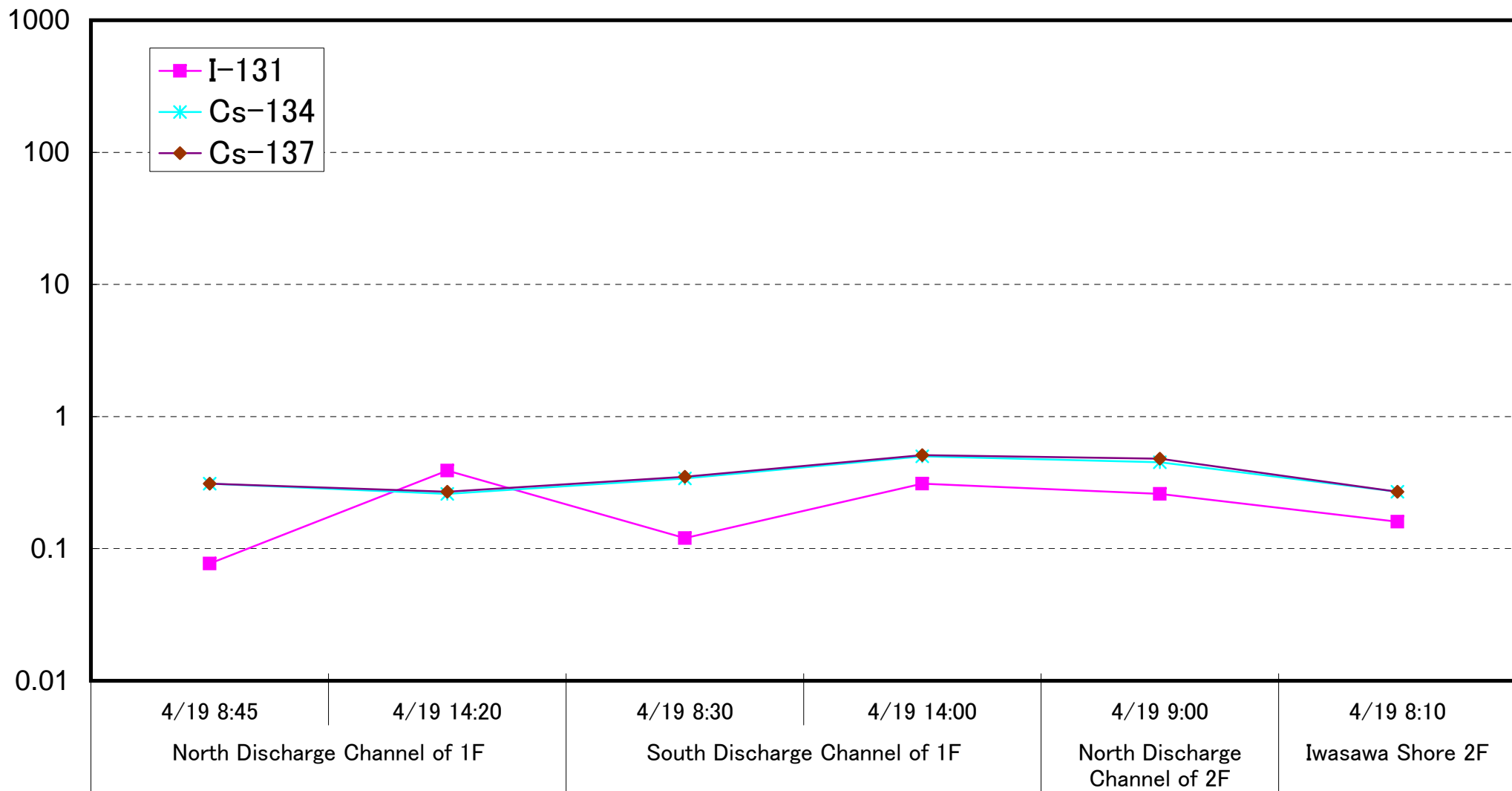
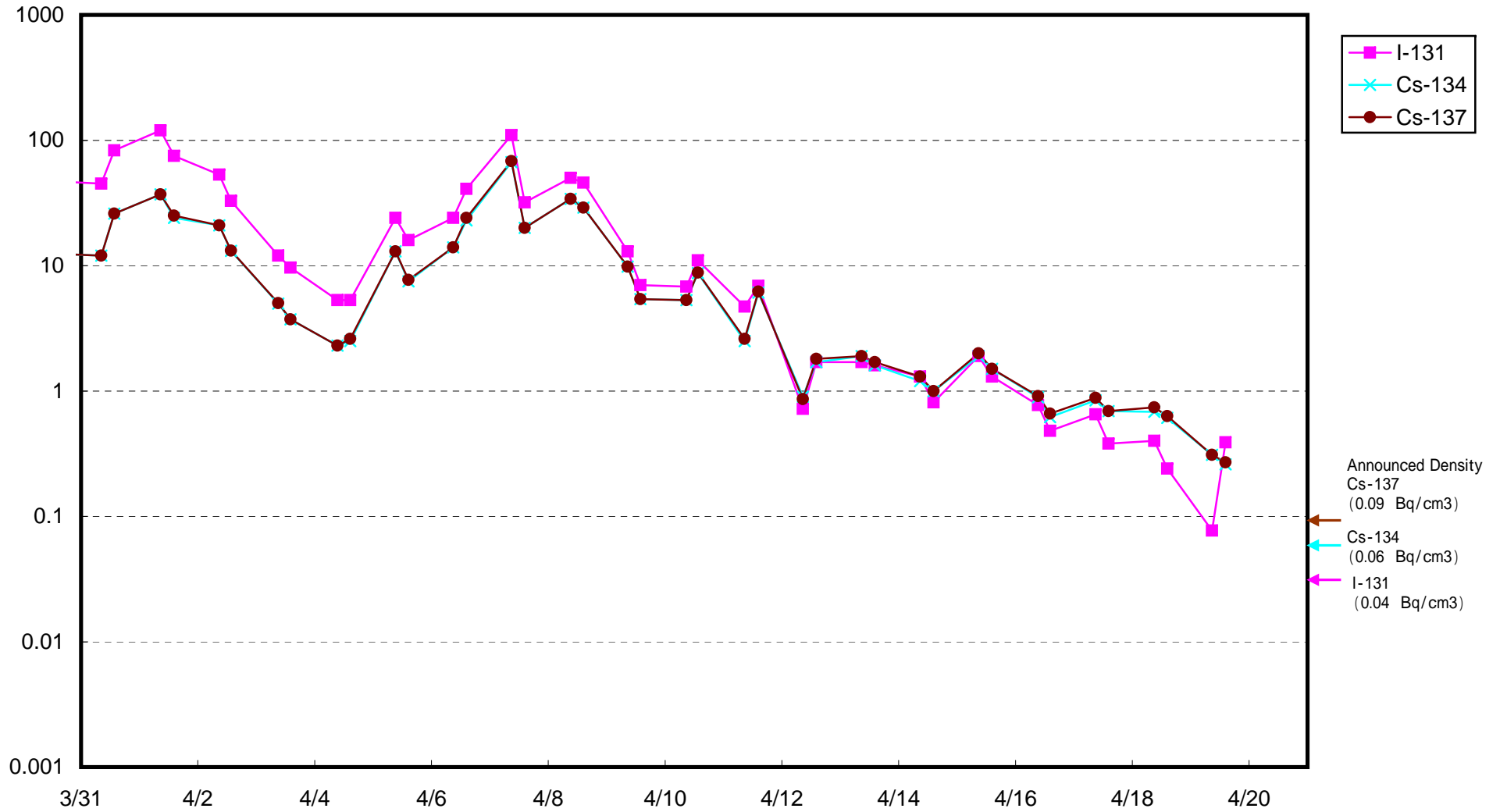


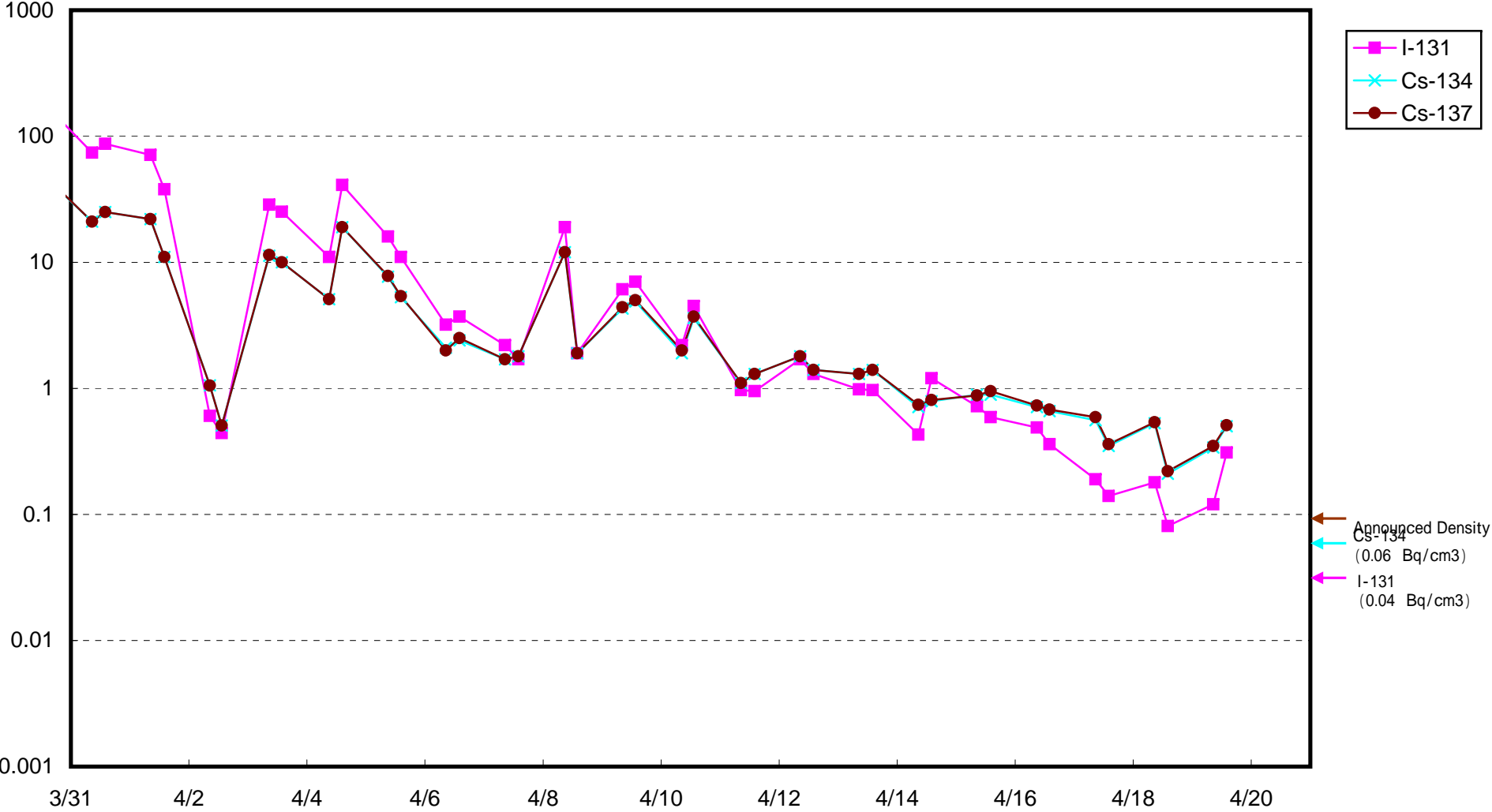
Radioactivity Density of Seawater (Bq/cm³)



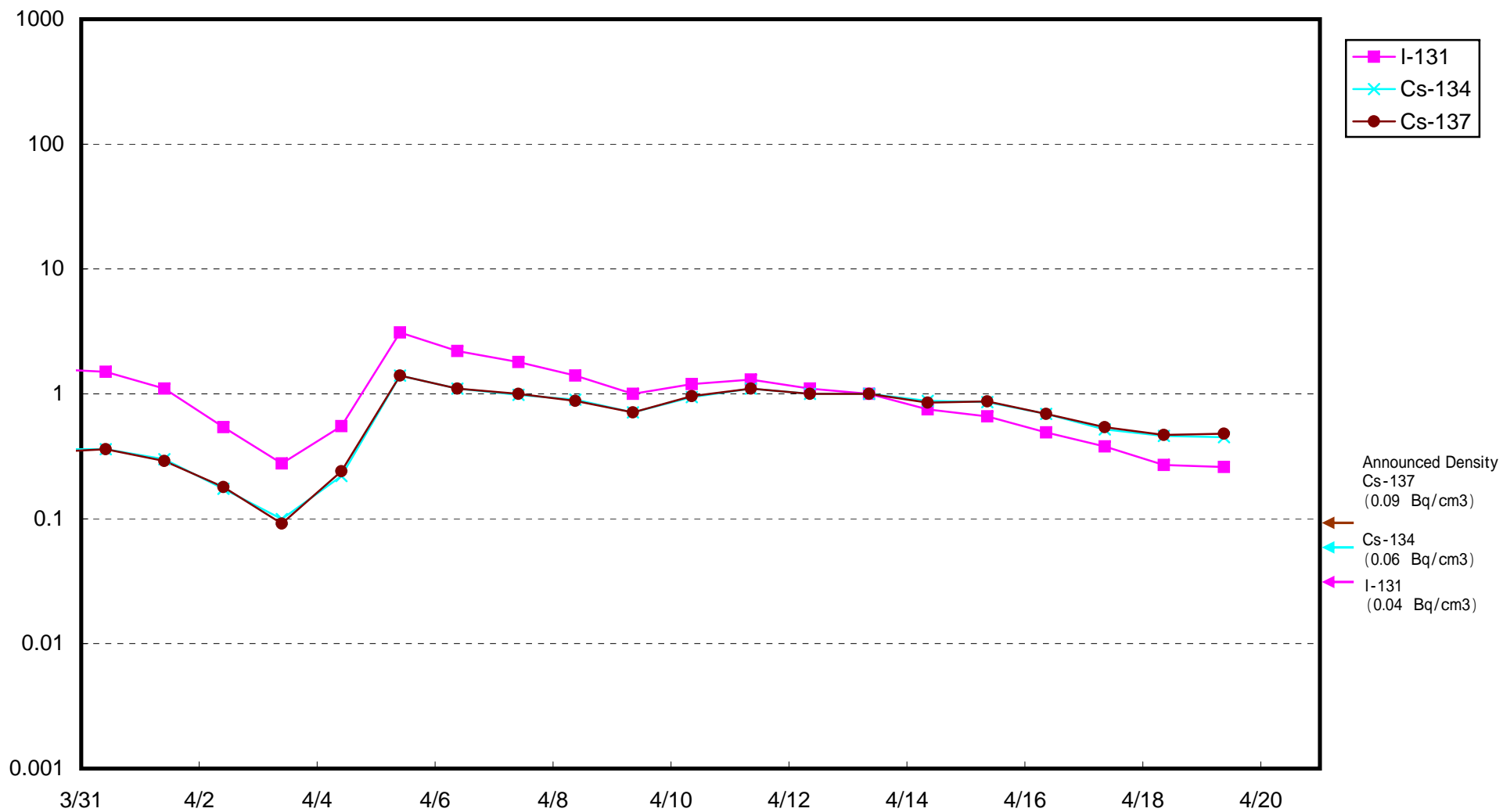
Radioactivity Density of Seawater at North of 1F5-6 Discharge Channel (approx. 30m north of 5-6 discharge channel)
 (B q / c m 3)



Radioactivity Density of Seawater at South Discharge Channel of 1F (Bq / cm³)



Radioactivity Density of Seawater at North Discharge Channel of 2F (B q / c m 3)



Radioactivity Density of Seawater at Iwasawa Shore 2F (Bq / cm³)

