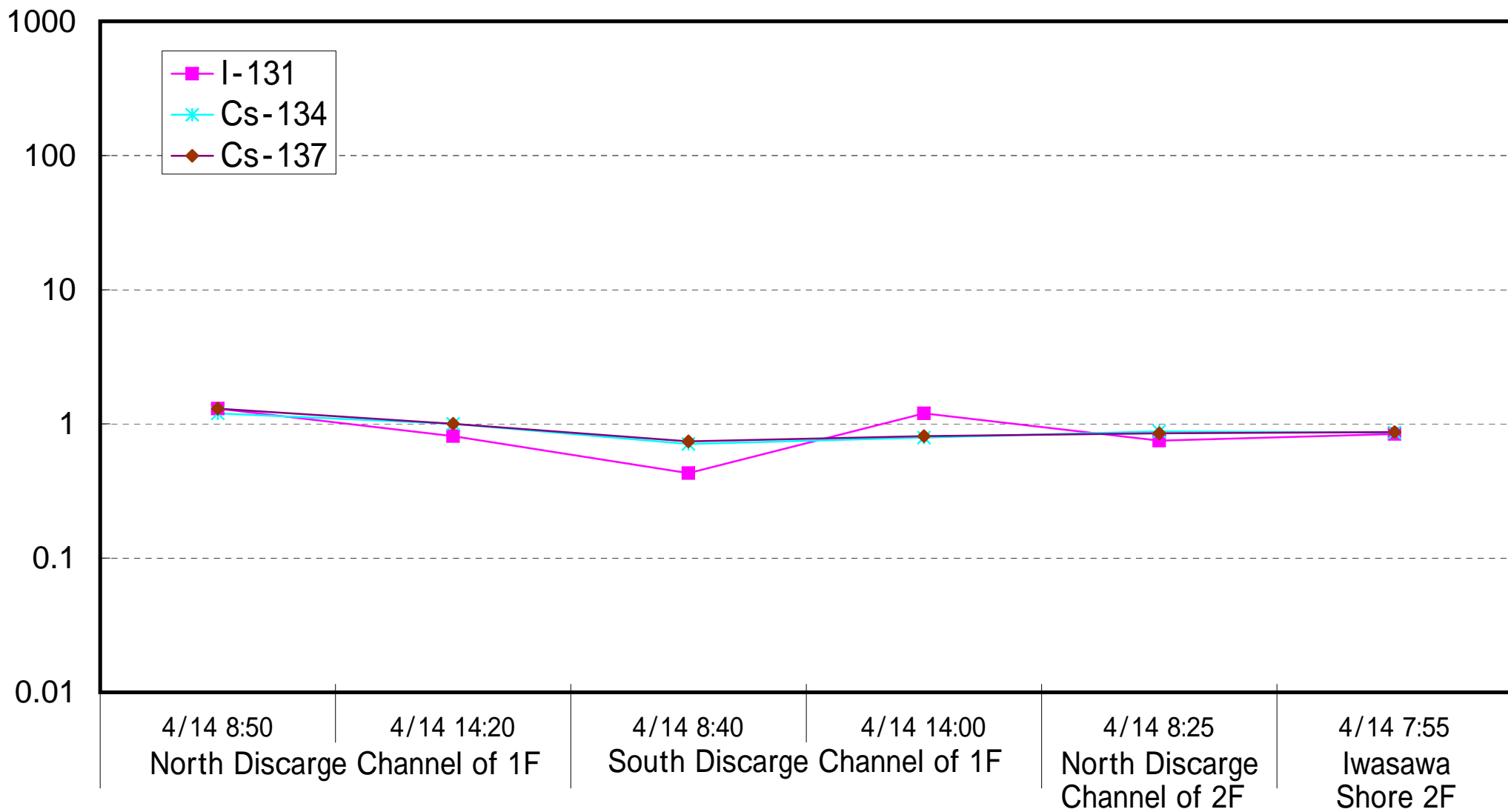
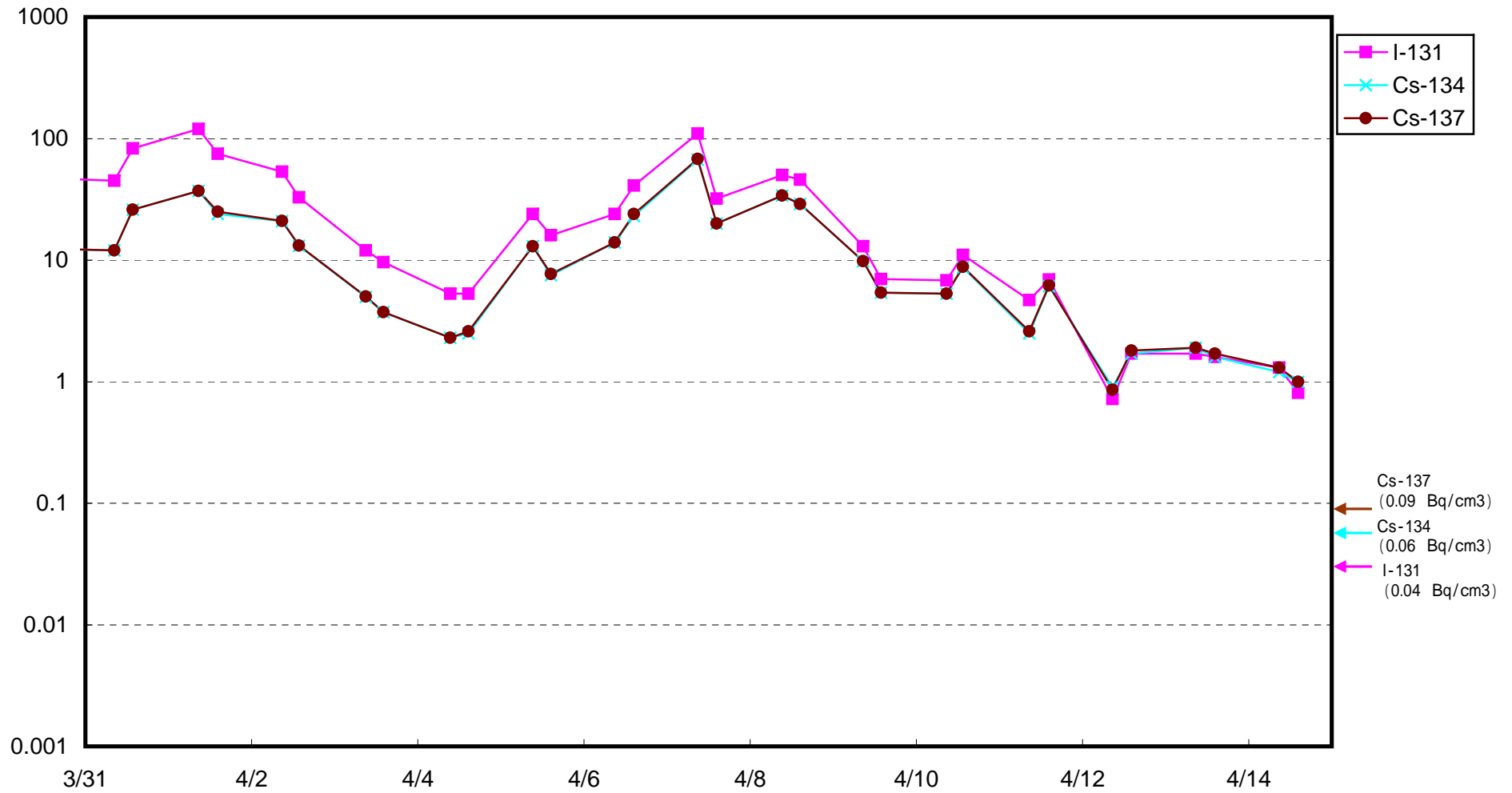


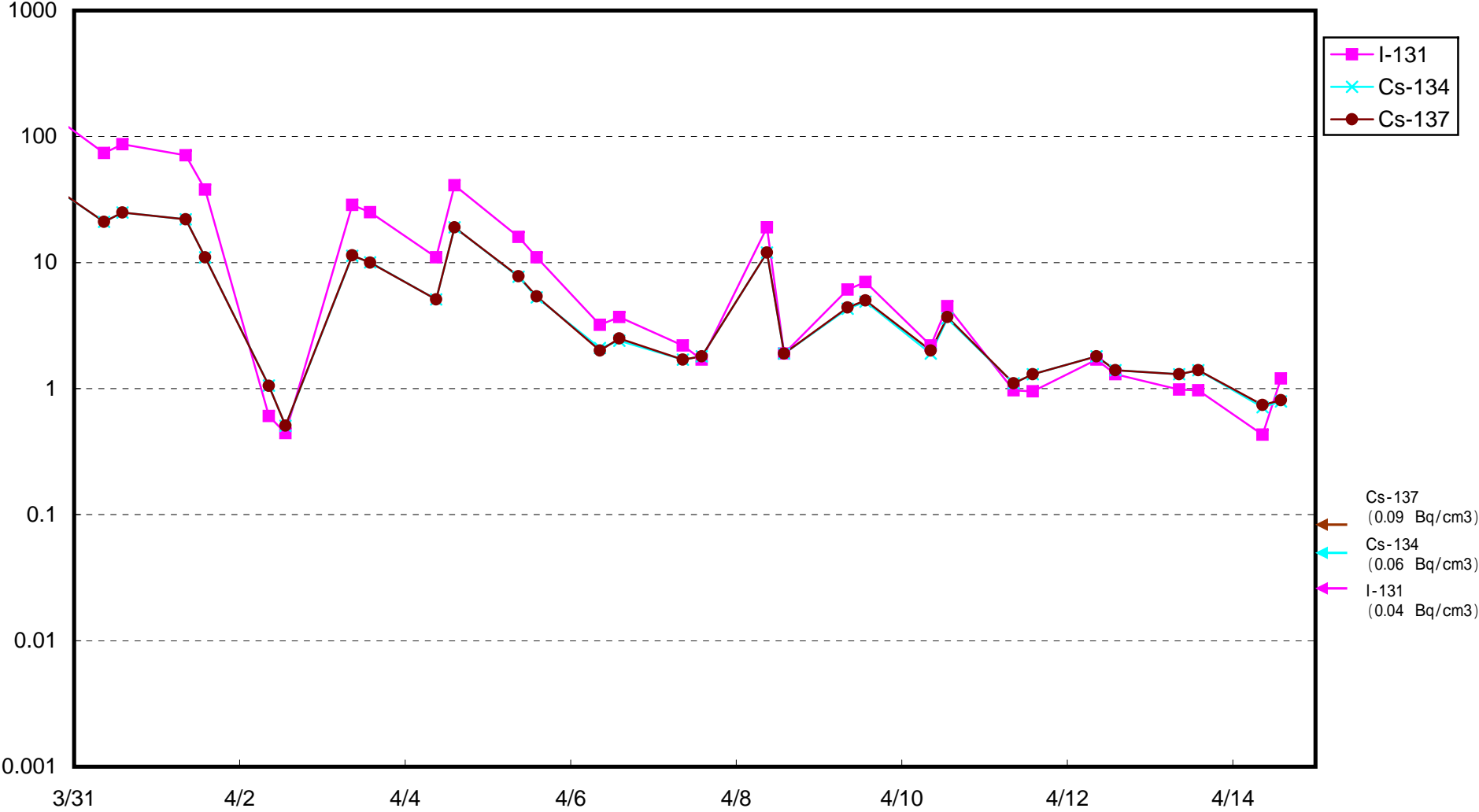
Radioactivity Density of Seawater (B q / c m3)



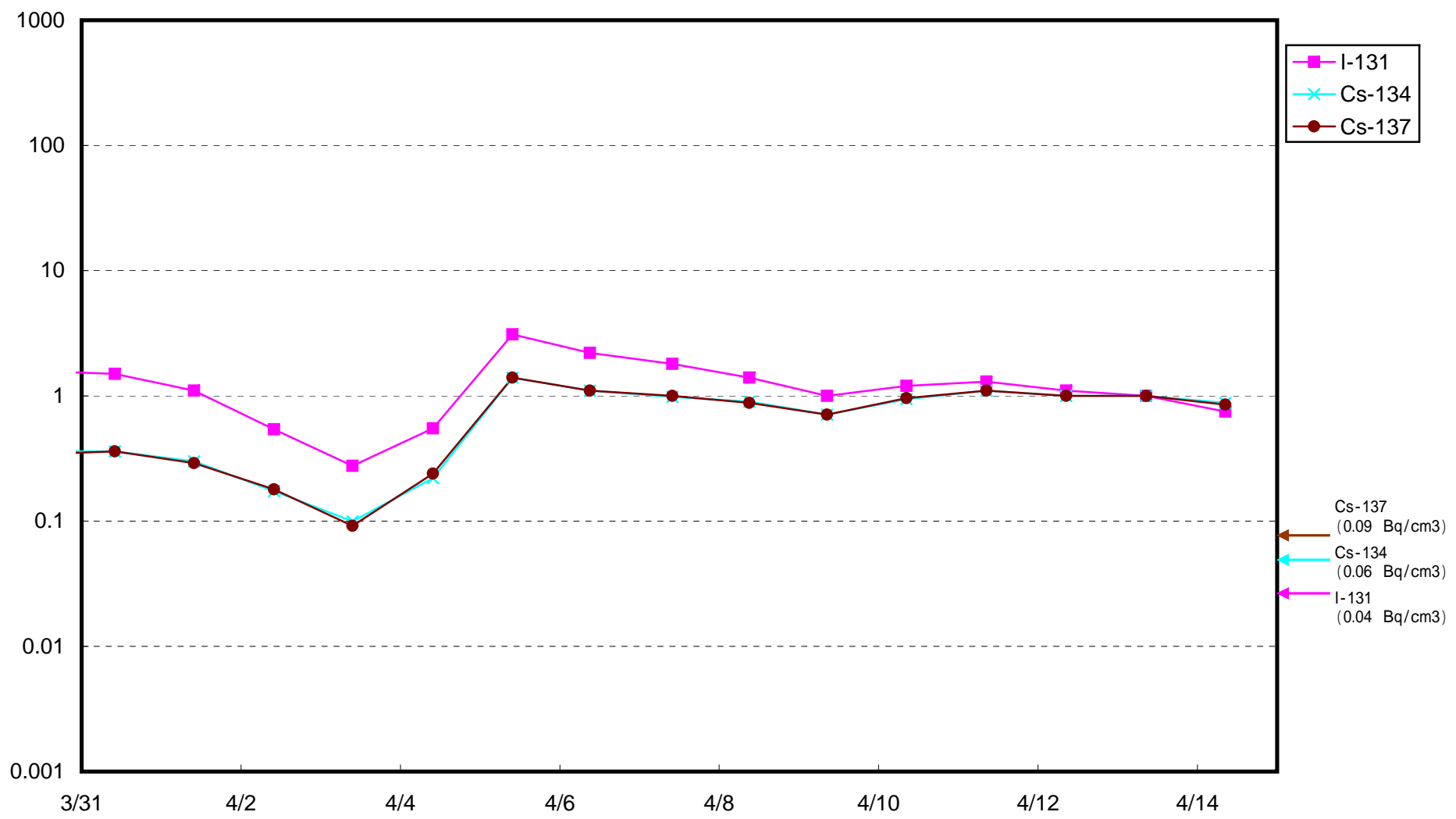
Radioactivity Density of Seawater at North of 1F 5-6 Discharge Channel (approx. 30m north of 5-6u discharge channel)
(Bq/cm³)



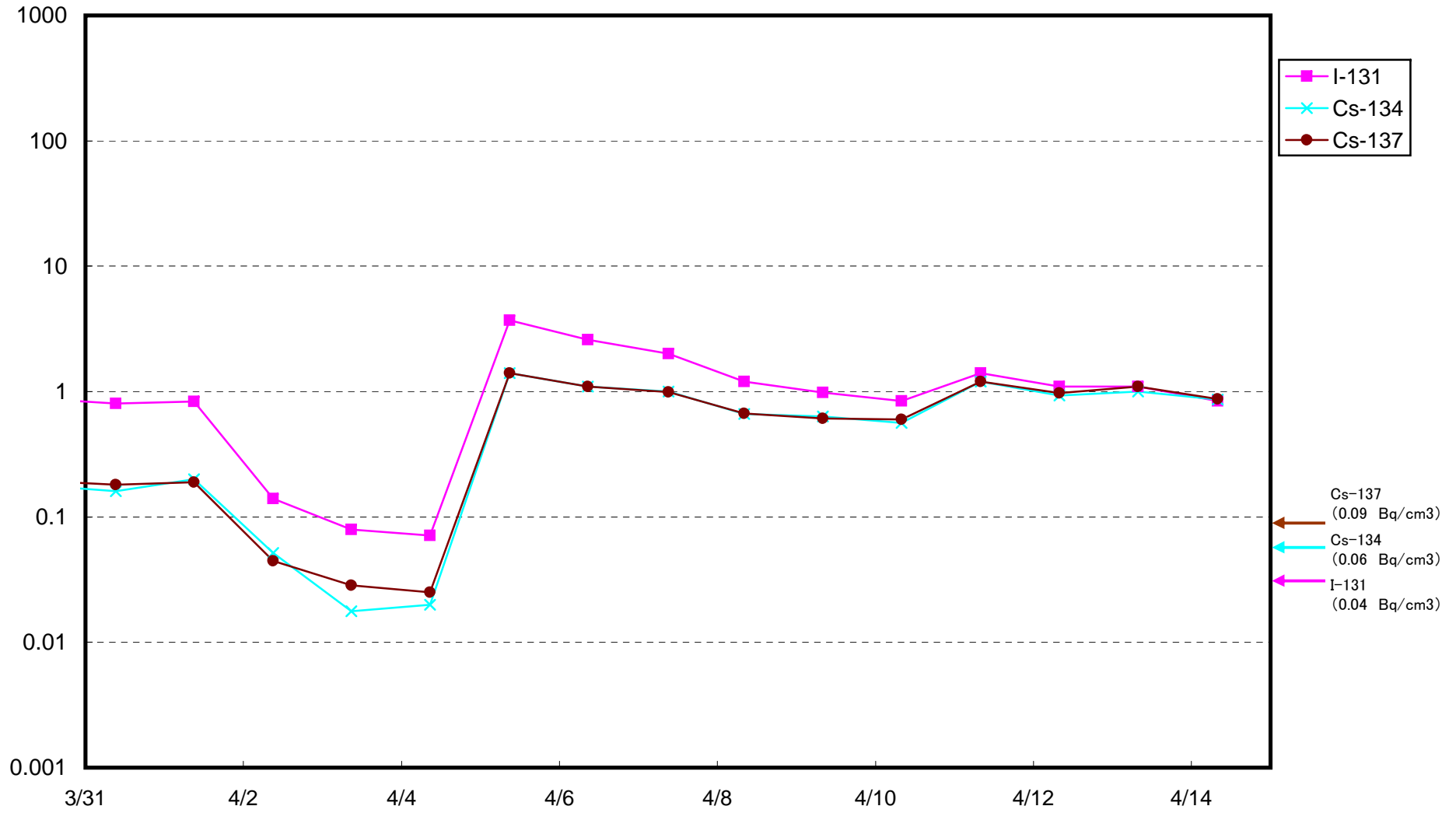
Radioactivity Density of Seawater at South Discharge Channel of 1F (Bq / cm³)



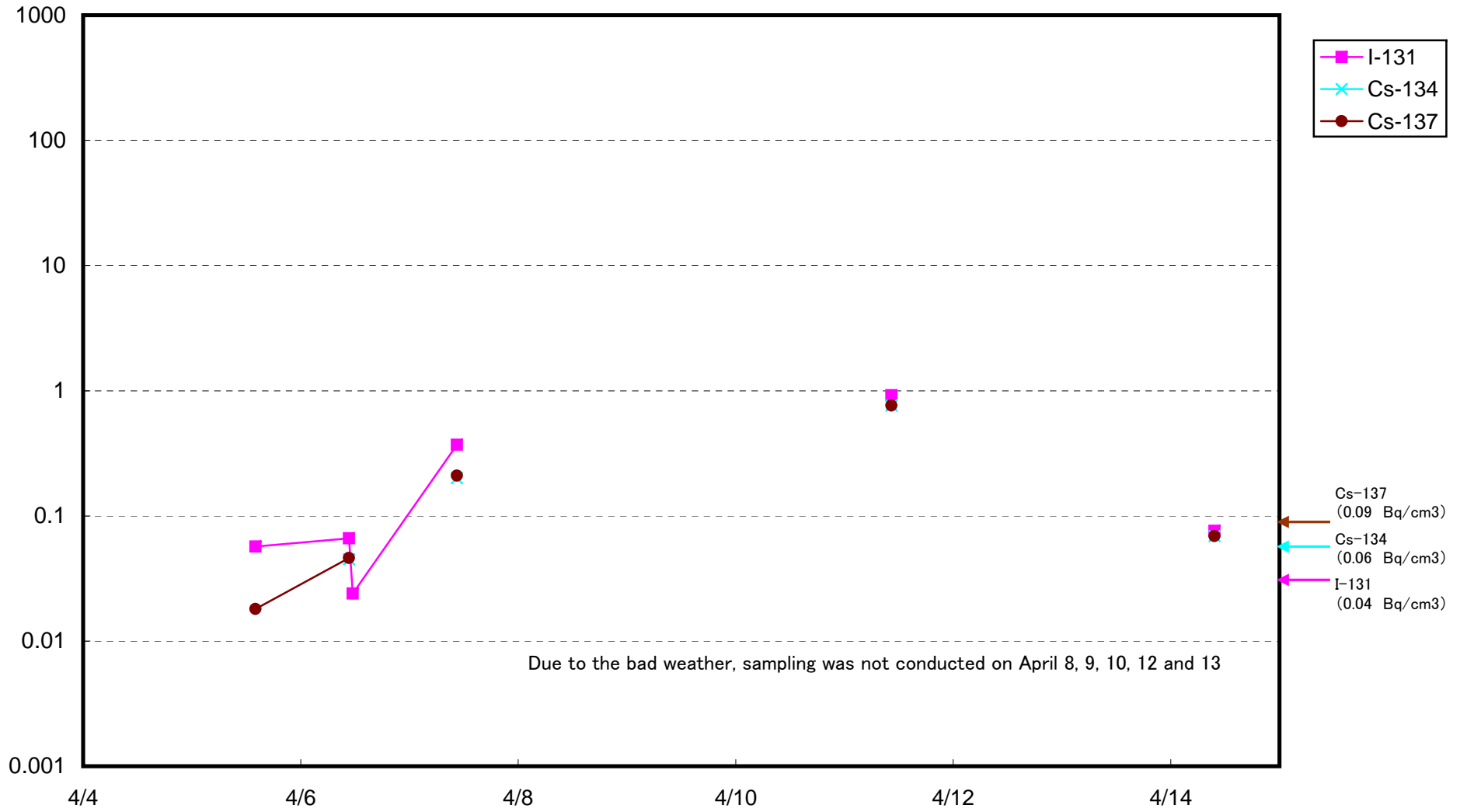
Radioactivity Density of Seawater at North Discharge Channel of 2F (B q / c m 3)



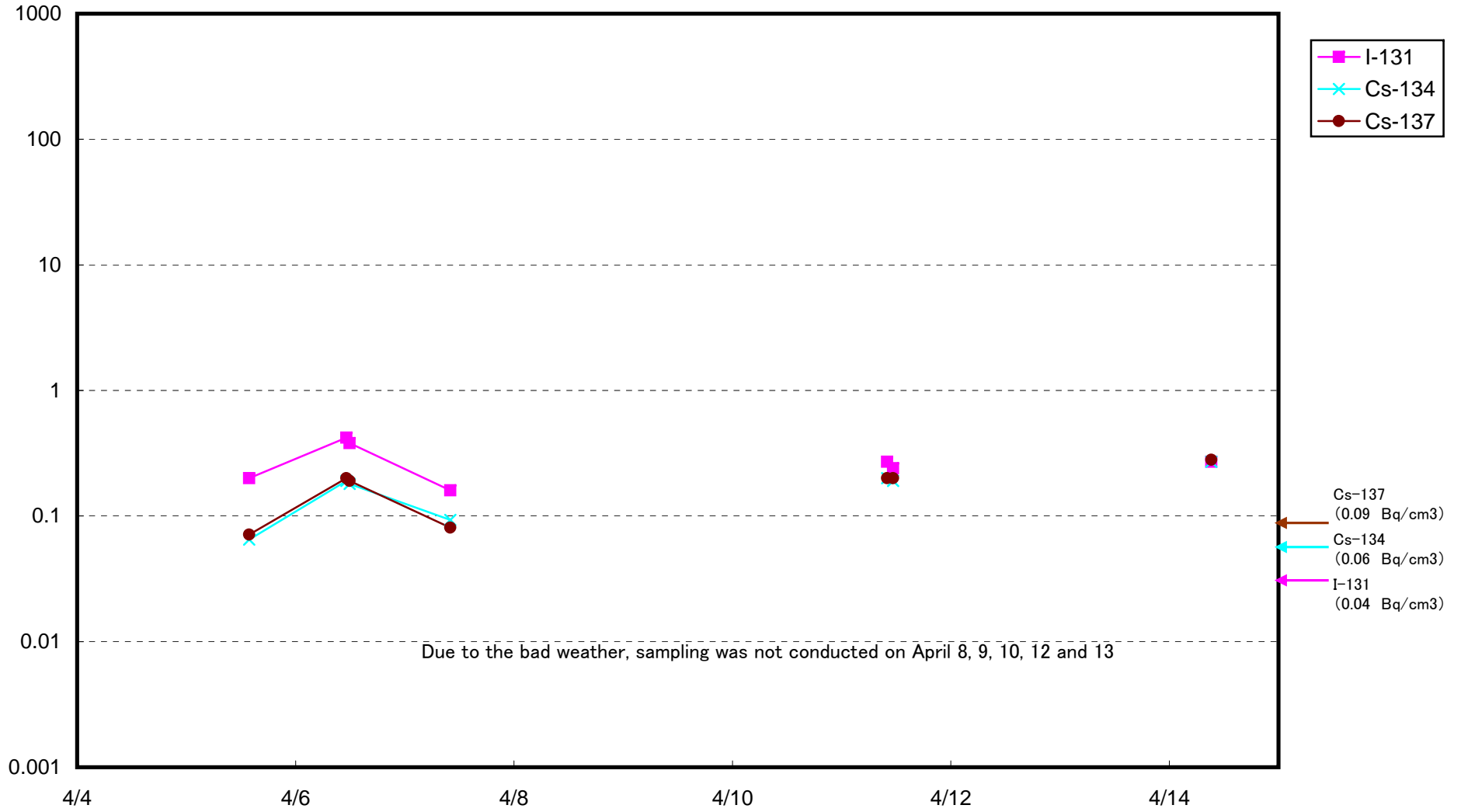
Radioactivity Density of Seawater at Iwasawa Shore at 2F (Bq/cm³)



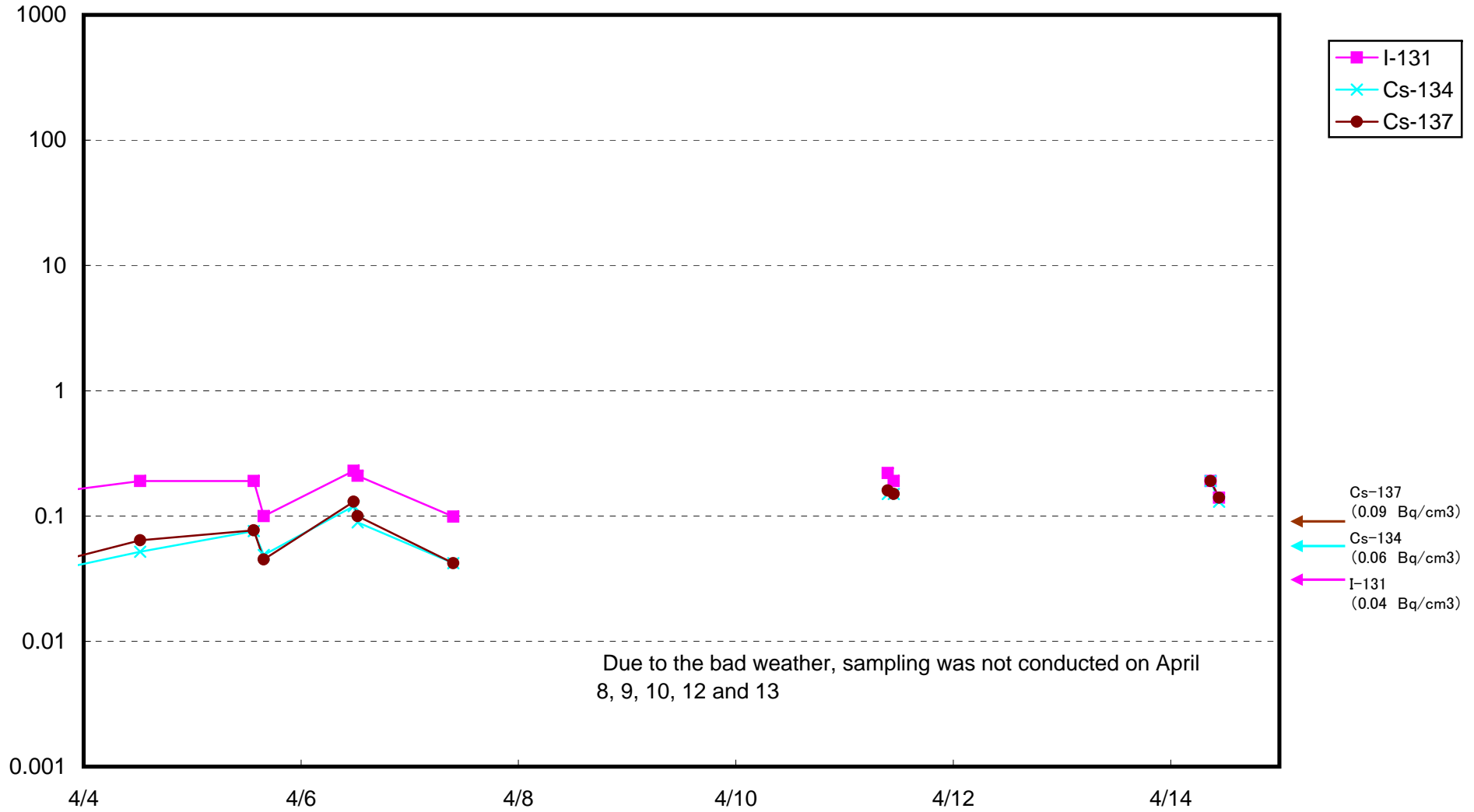
Radioactivity Density of Seawater at 15km off the coast of Minami Souma City (Bq/cm³)



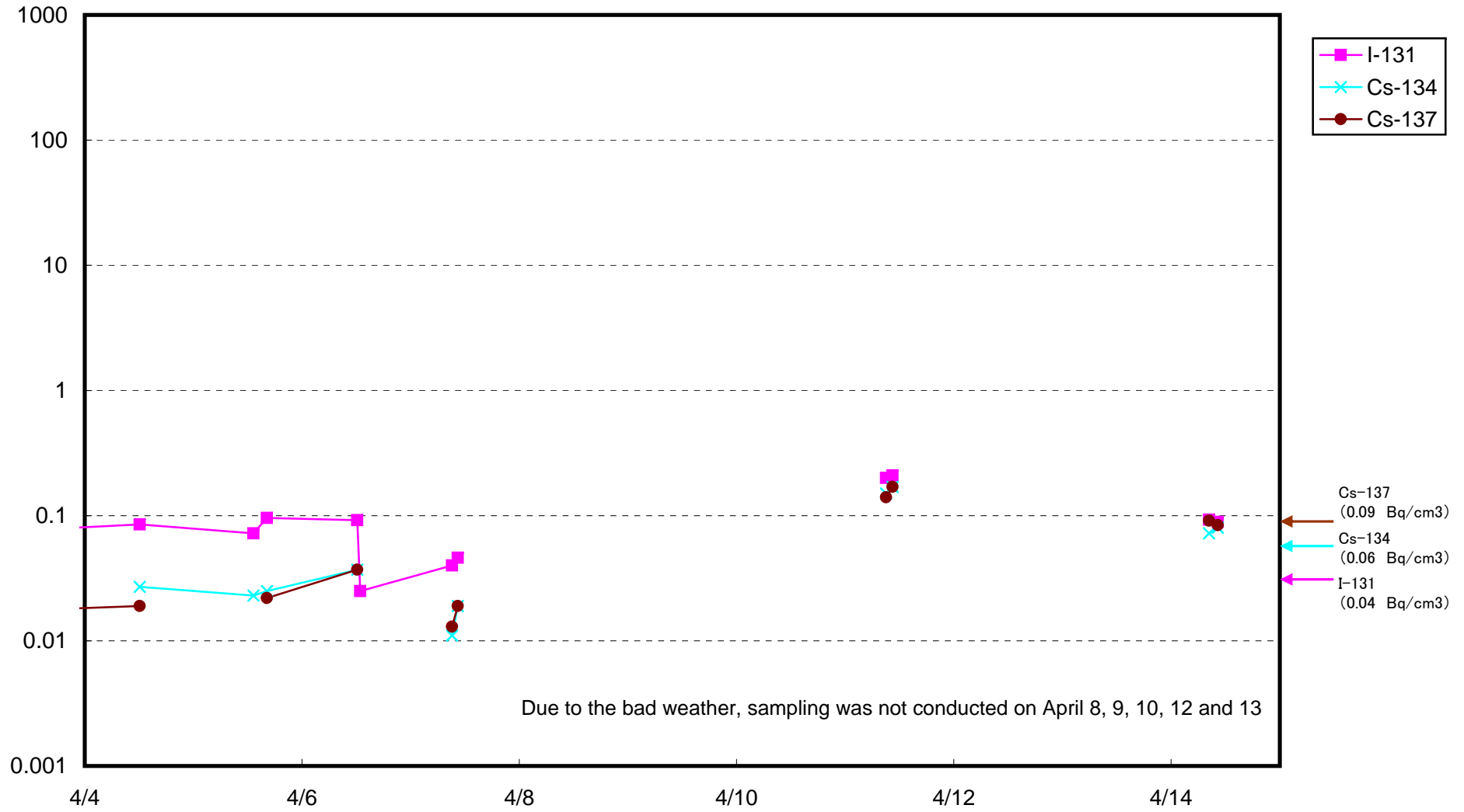
Radioactivity Density of Seawater at 15km off the coast of Ukedo gawa river(Bq/cm³)



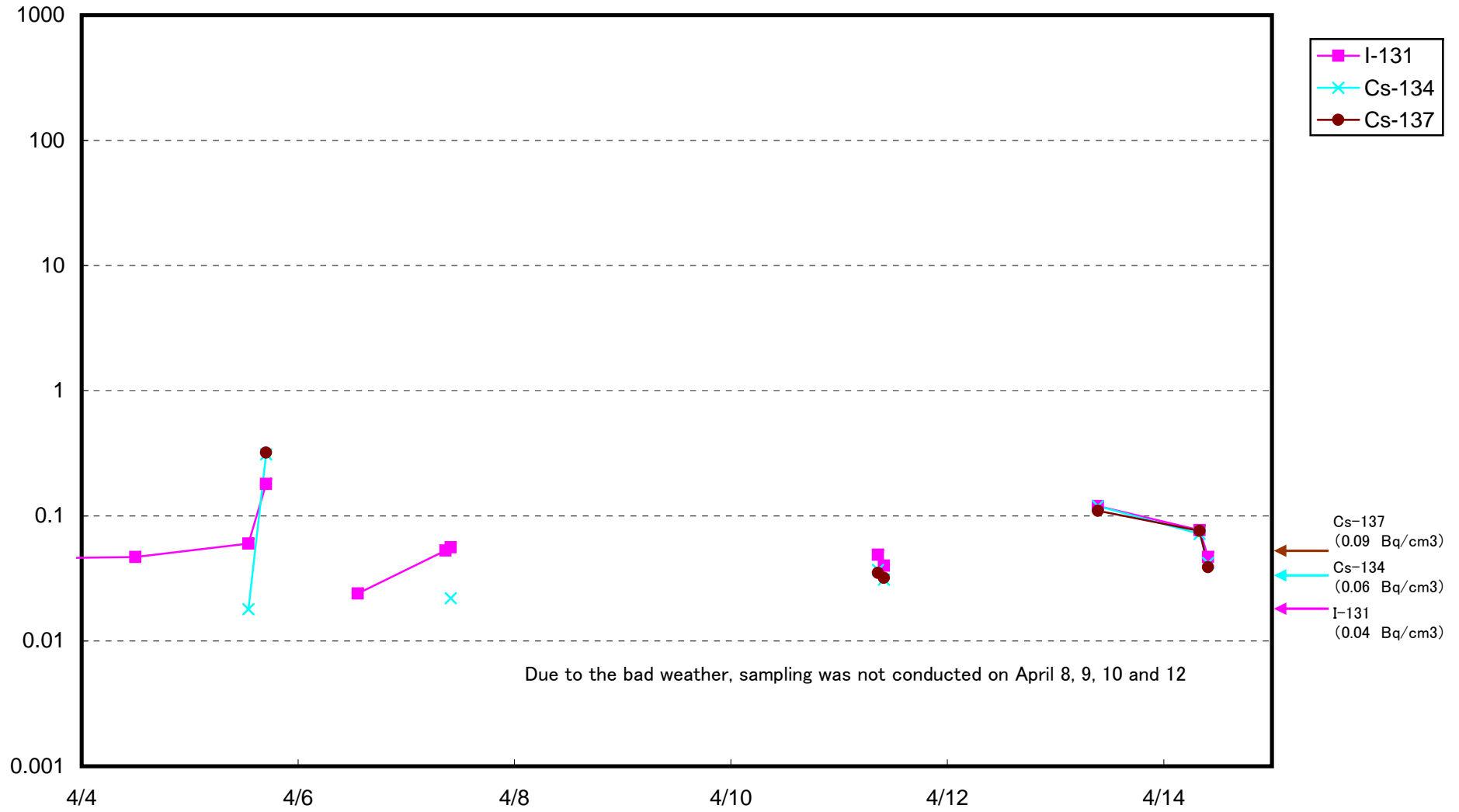
Radioactivity Density of Seawater at 15km off the coast of 1F(Bq/cm³)



Radioactivity Density of Seawater at 15km off the coast of 2F (Bq/cm³)



Radioactivity Density of Seawater at 15 off the coast of Iwasawa Shore (Bq/cm³)



Radioactivity Density of Seawater at 15km off the coast of Hirono Town (B q / c m 3)

