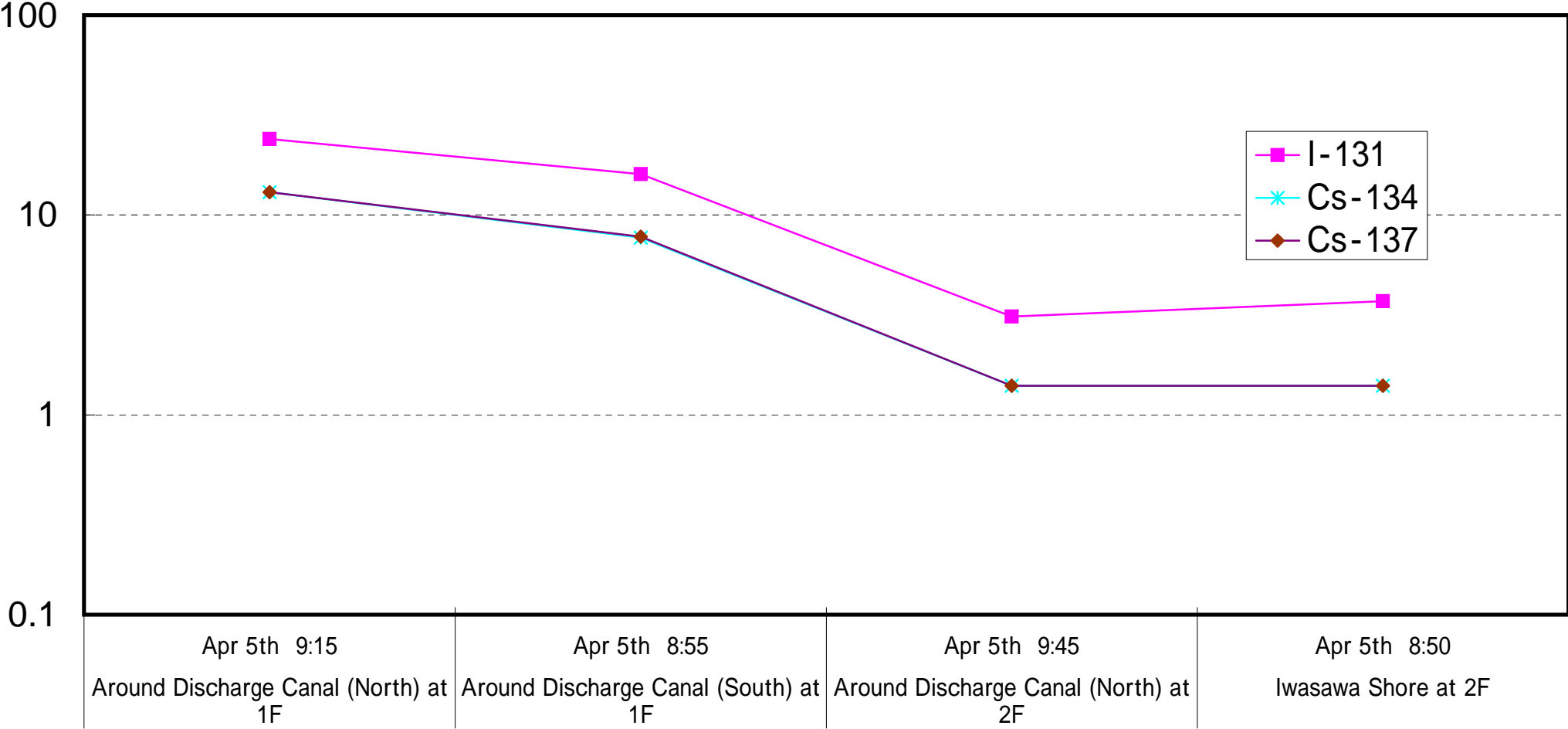
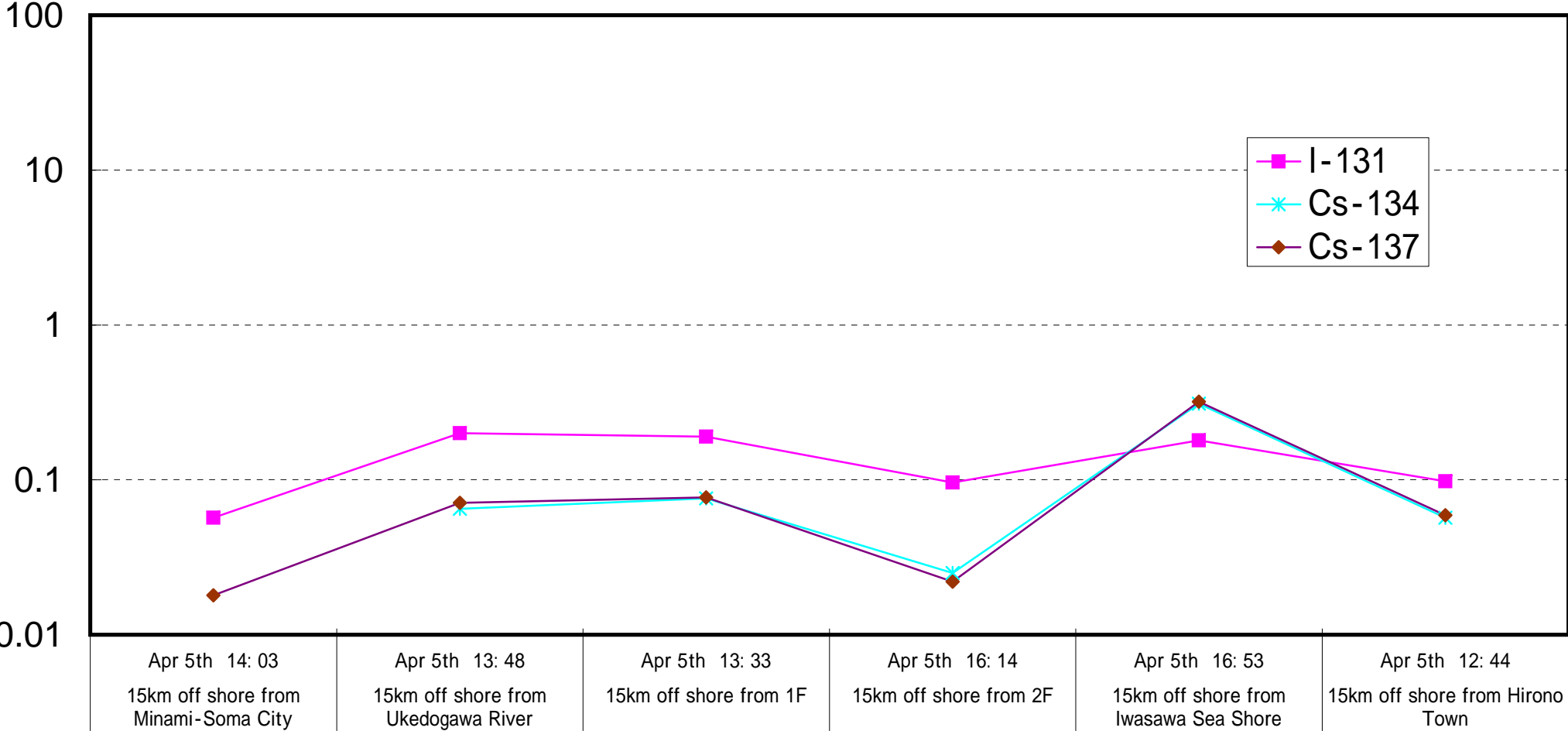


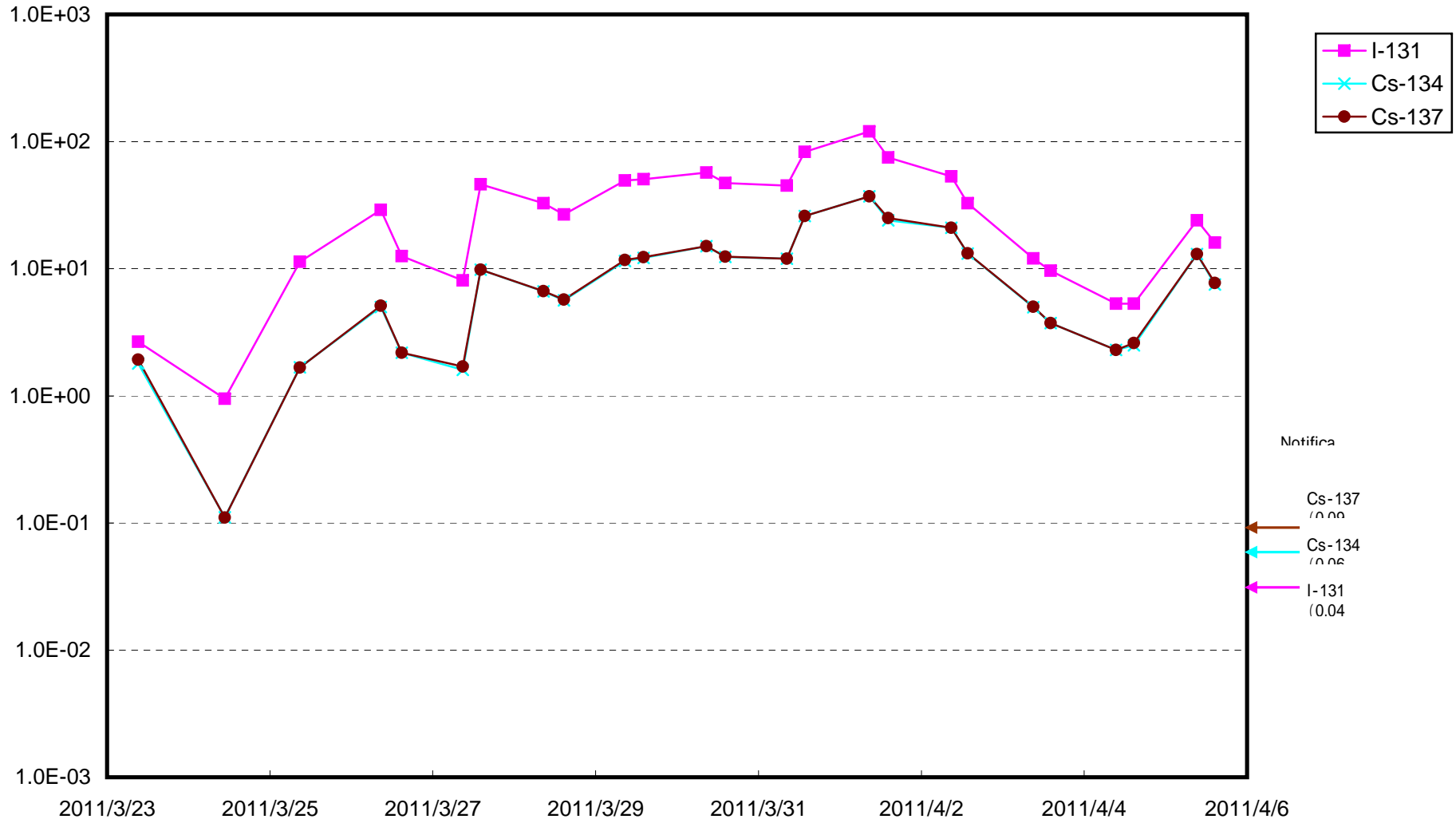
Radioactivity Density of Seawater (Bq/cm<sup>3</sup>)



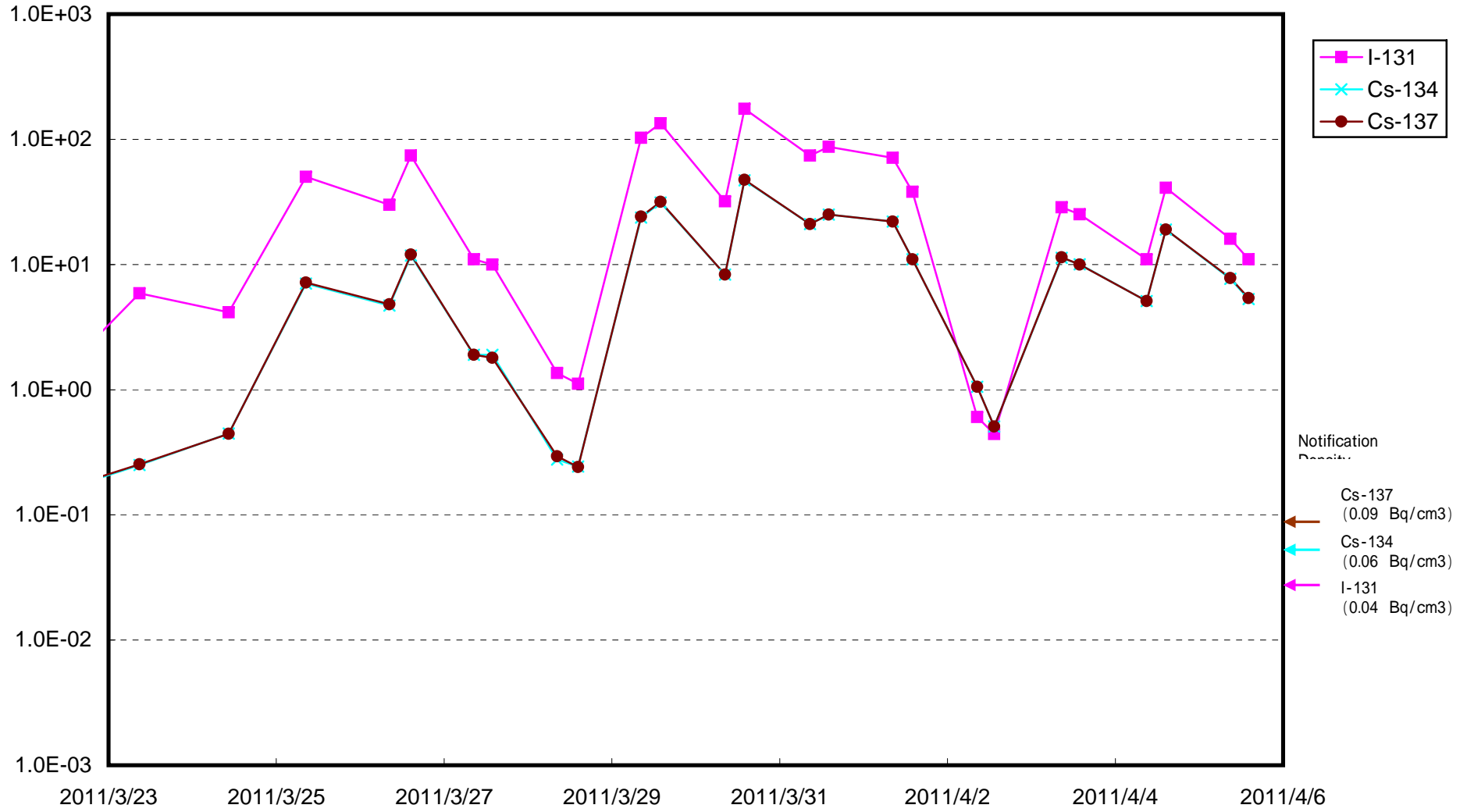
# Radioactivity Density of Seawater (Bq/cm<sup>3</sup>)



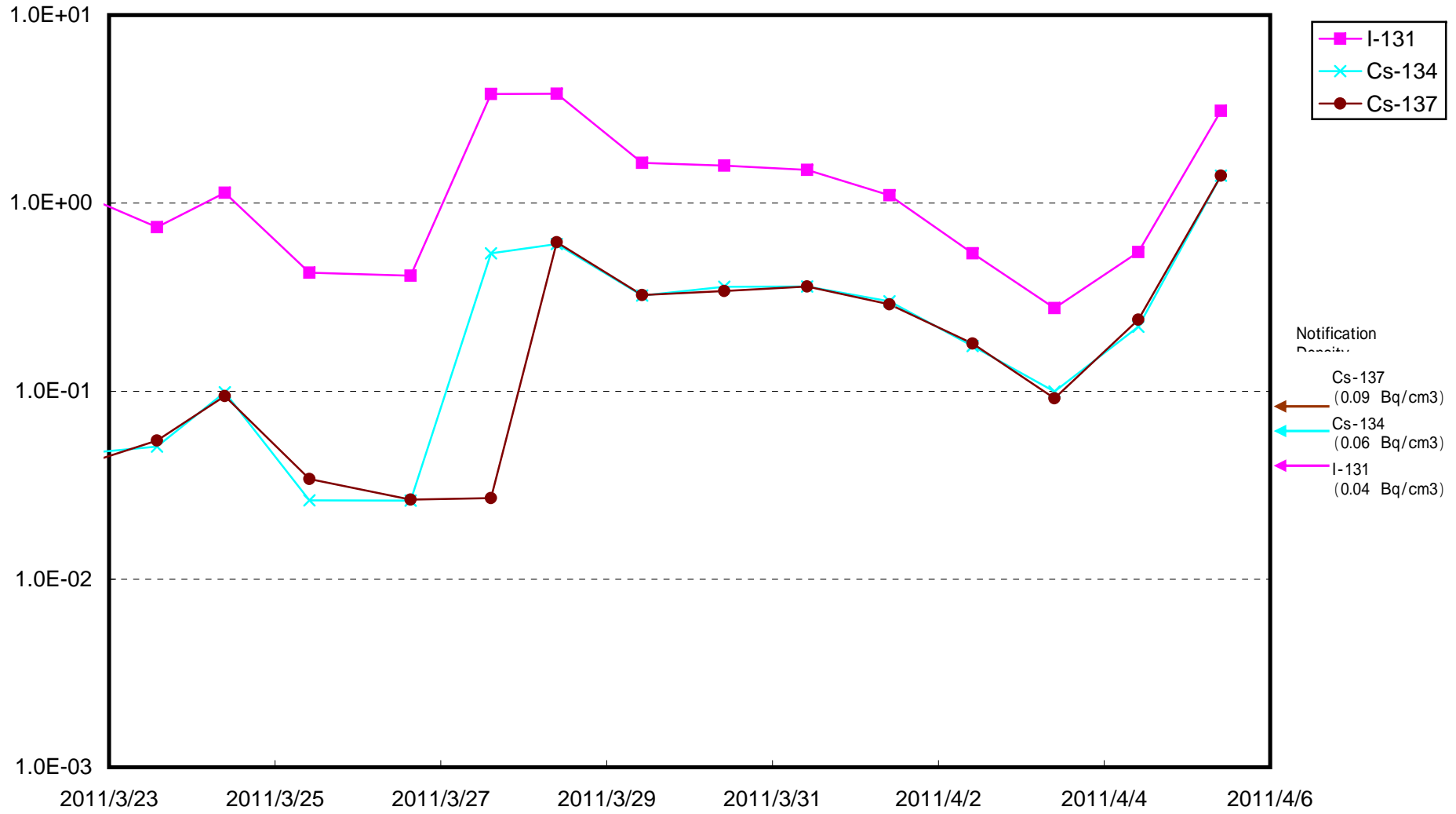
Radioactivity Density at 1F 5~6 Discharge Canal (North) (approx. 30km north of 5~6u discharge canal) (Bq/cm<sup>3</sup>)



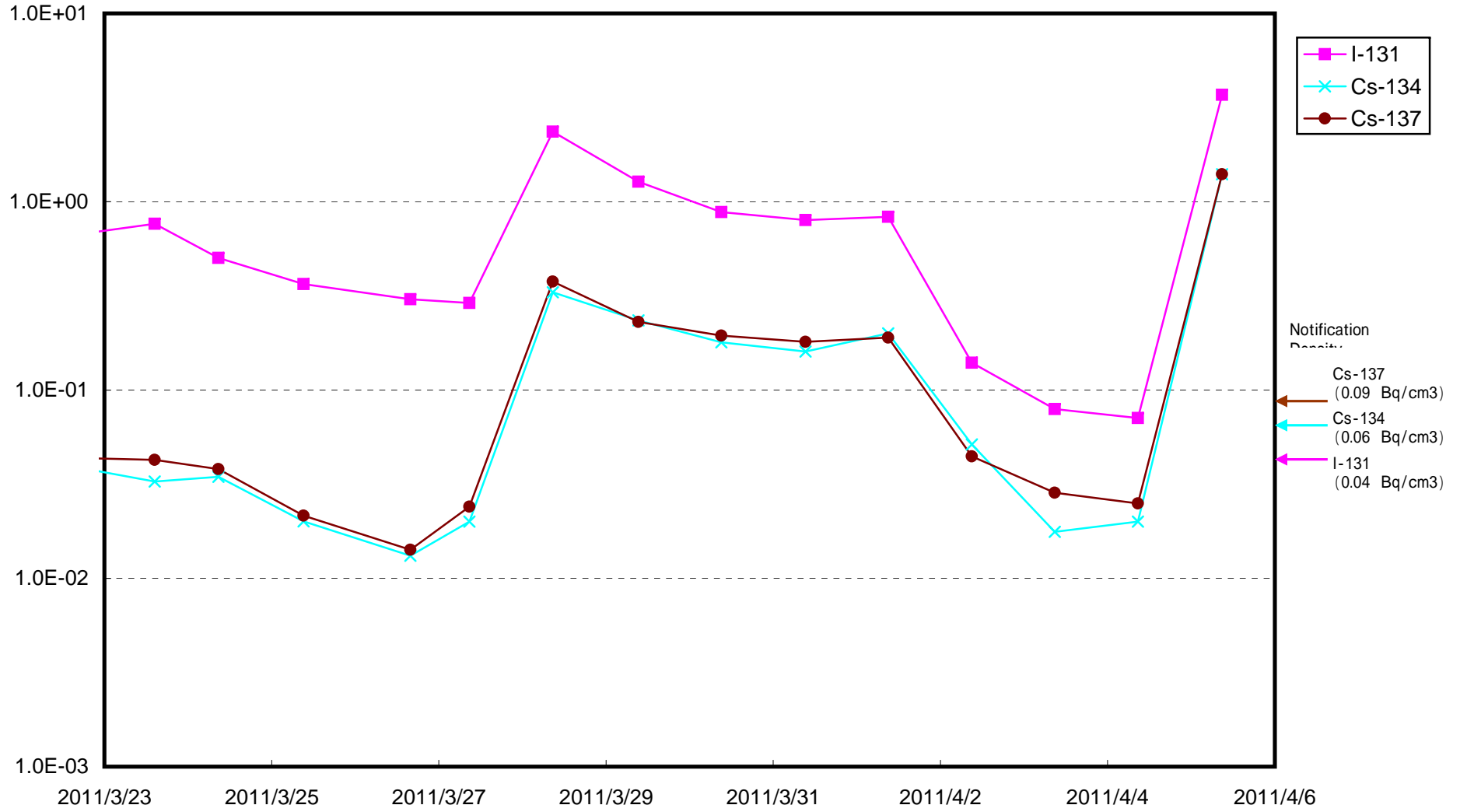
Radioactivity Density at 1F 5 ~ 6 Discharge Canal (South) (Bq/cm3)



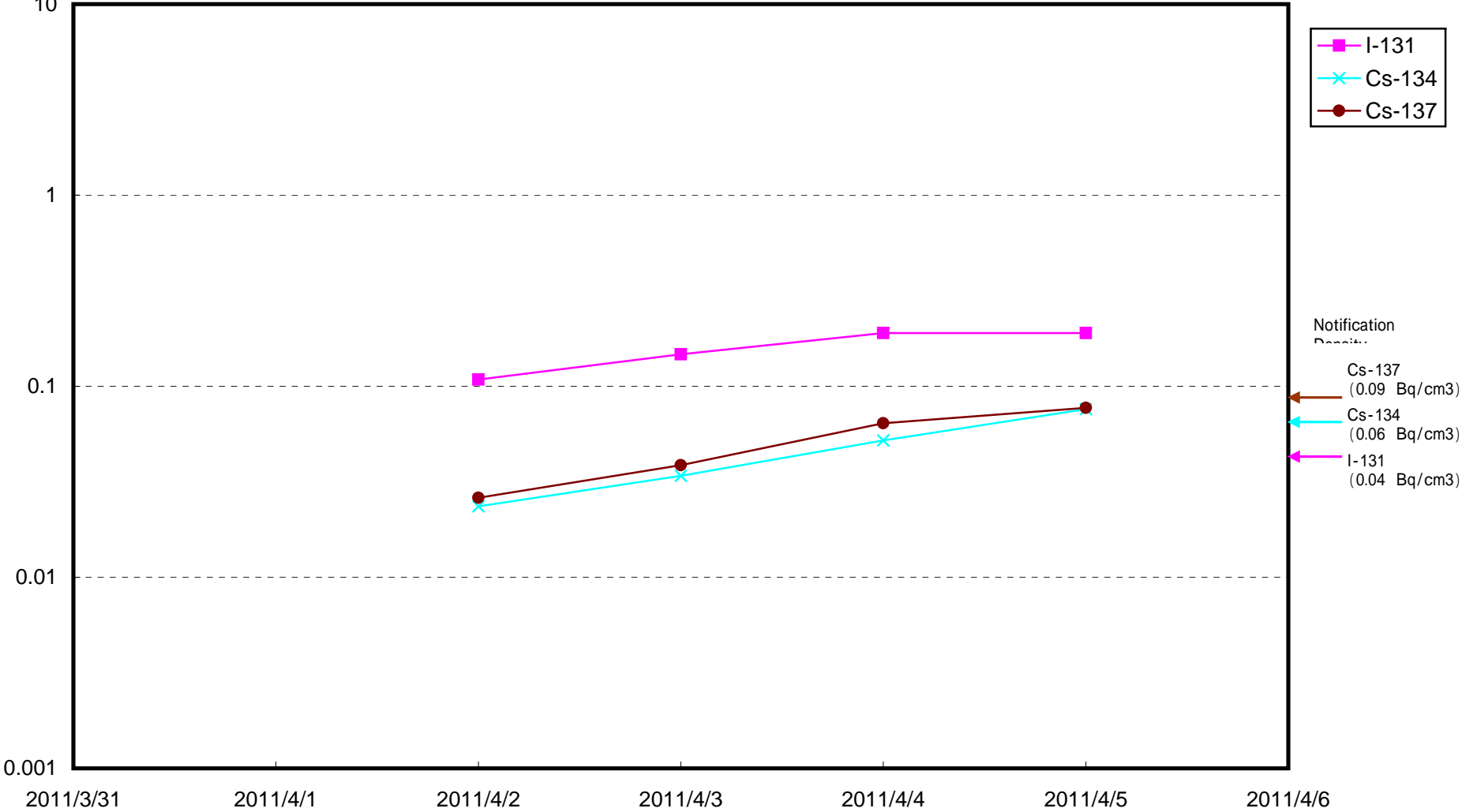
Radioactivity Density at 2F Discharge Canal (North) (Bq/cm<sup>3</sup>)



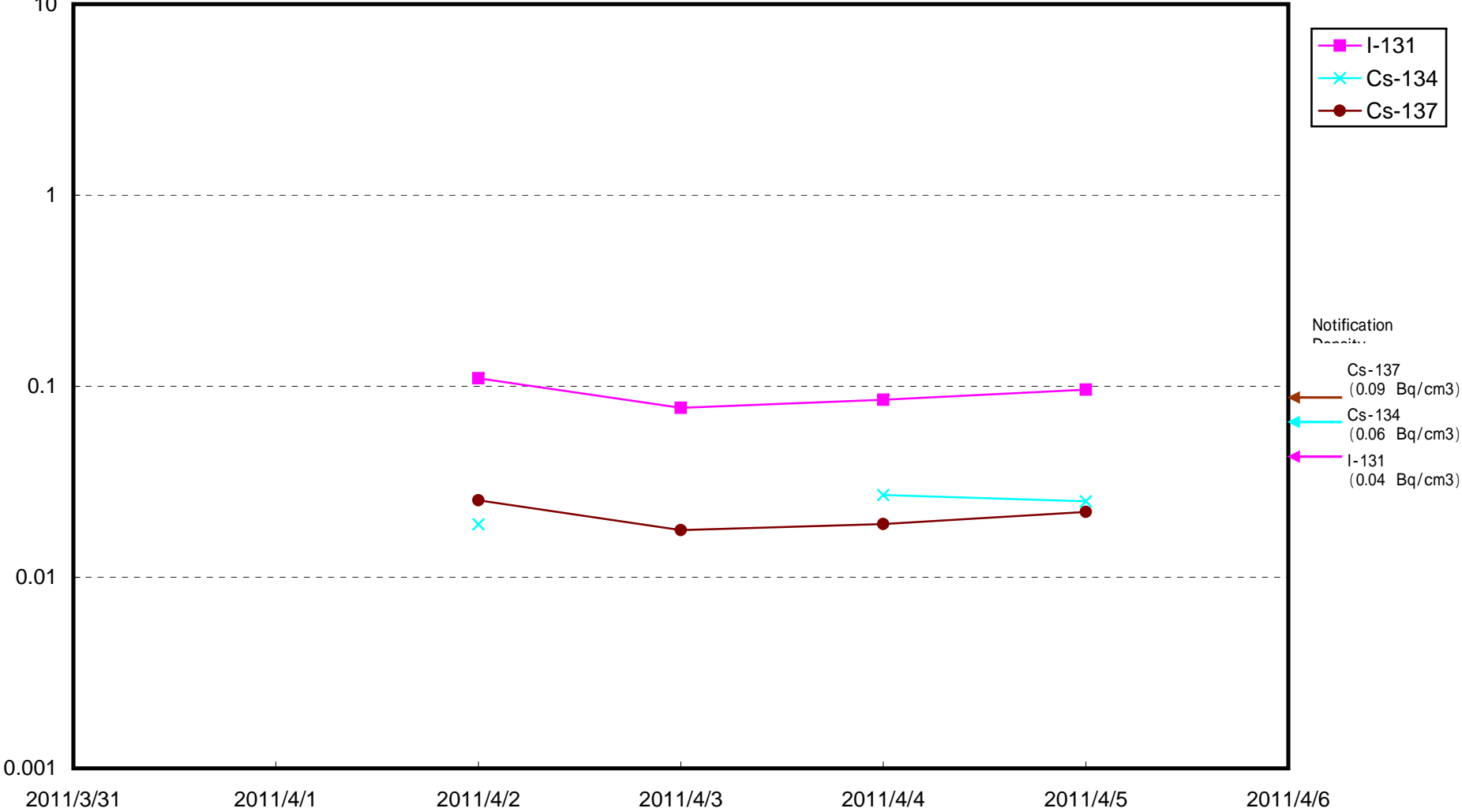
Radioactivity Density at Iwasawa Shore at 2F (Bq/cm<sup>3</sup>)



Radioactivity Density at 15km off shore from 1F (Bq/cm3)



Radioactivity Density at 15km off shore from 2F (Bq/cm3)





Radioactivity Density at 15km off shore from Iwasawa Sea Shore (Bq/cm3)

