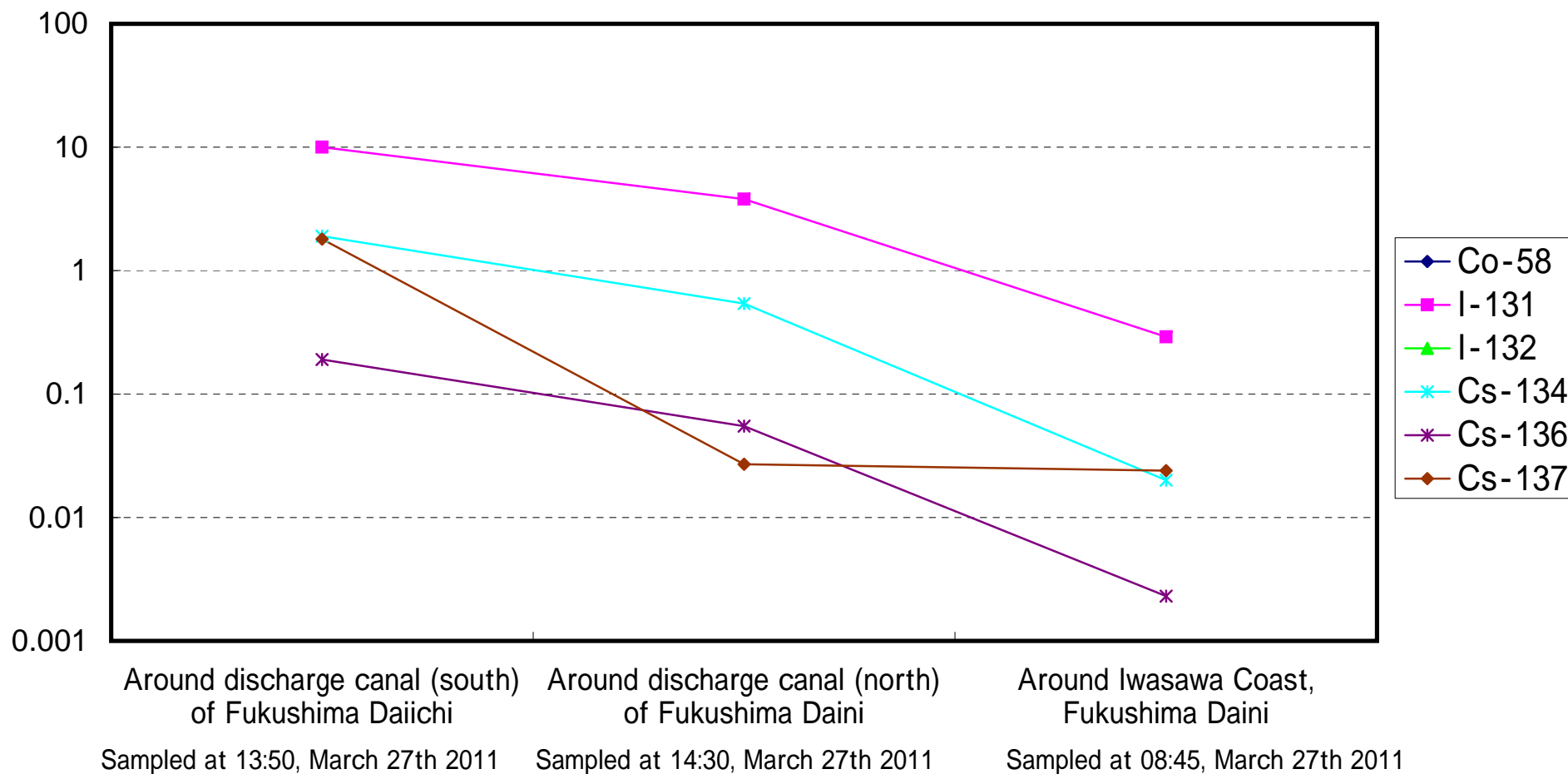
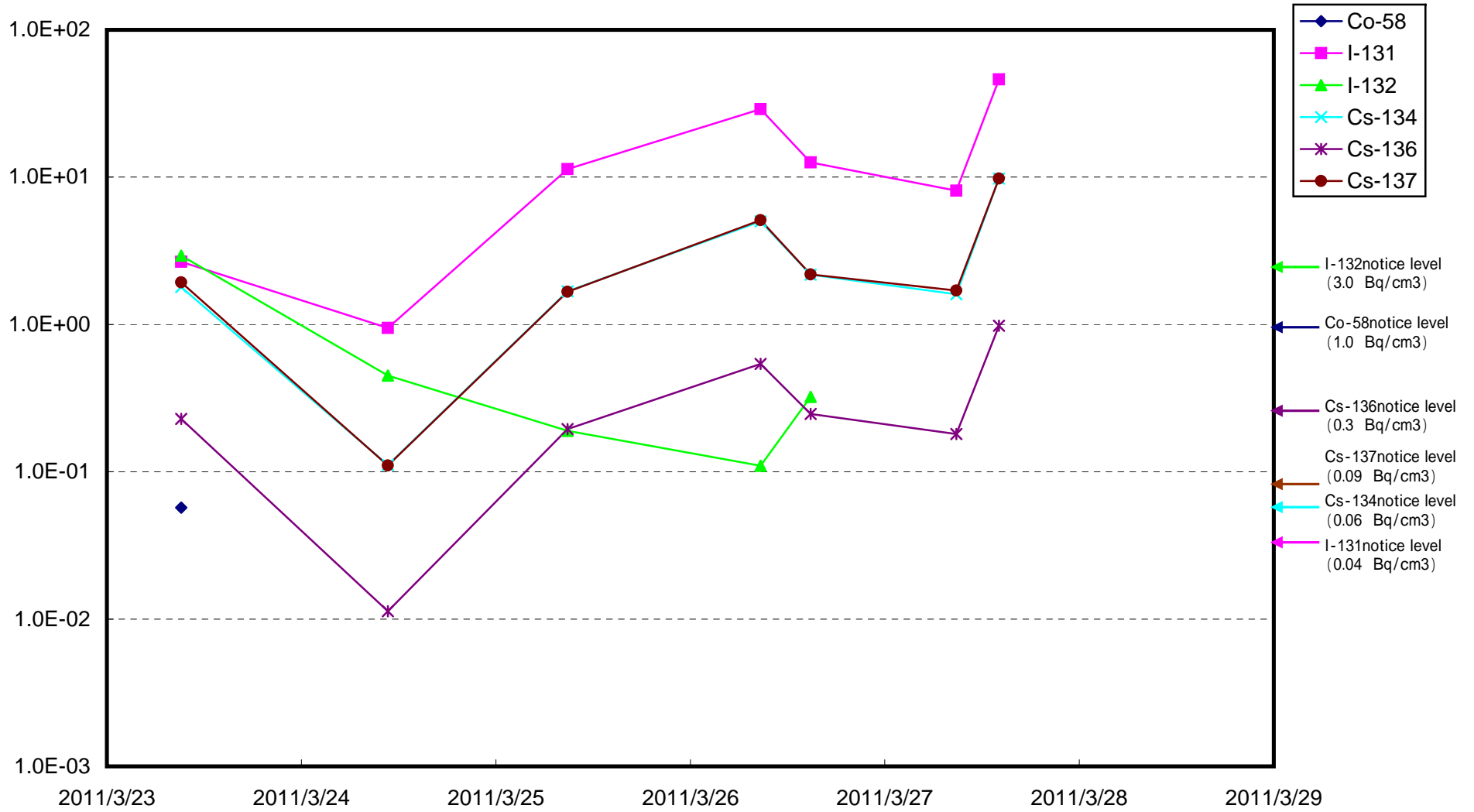


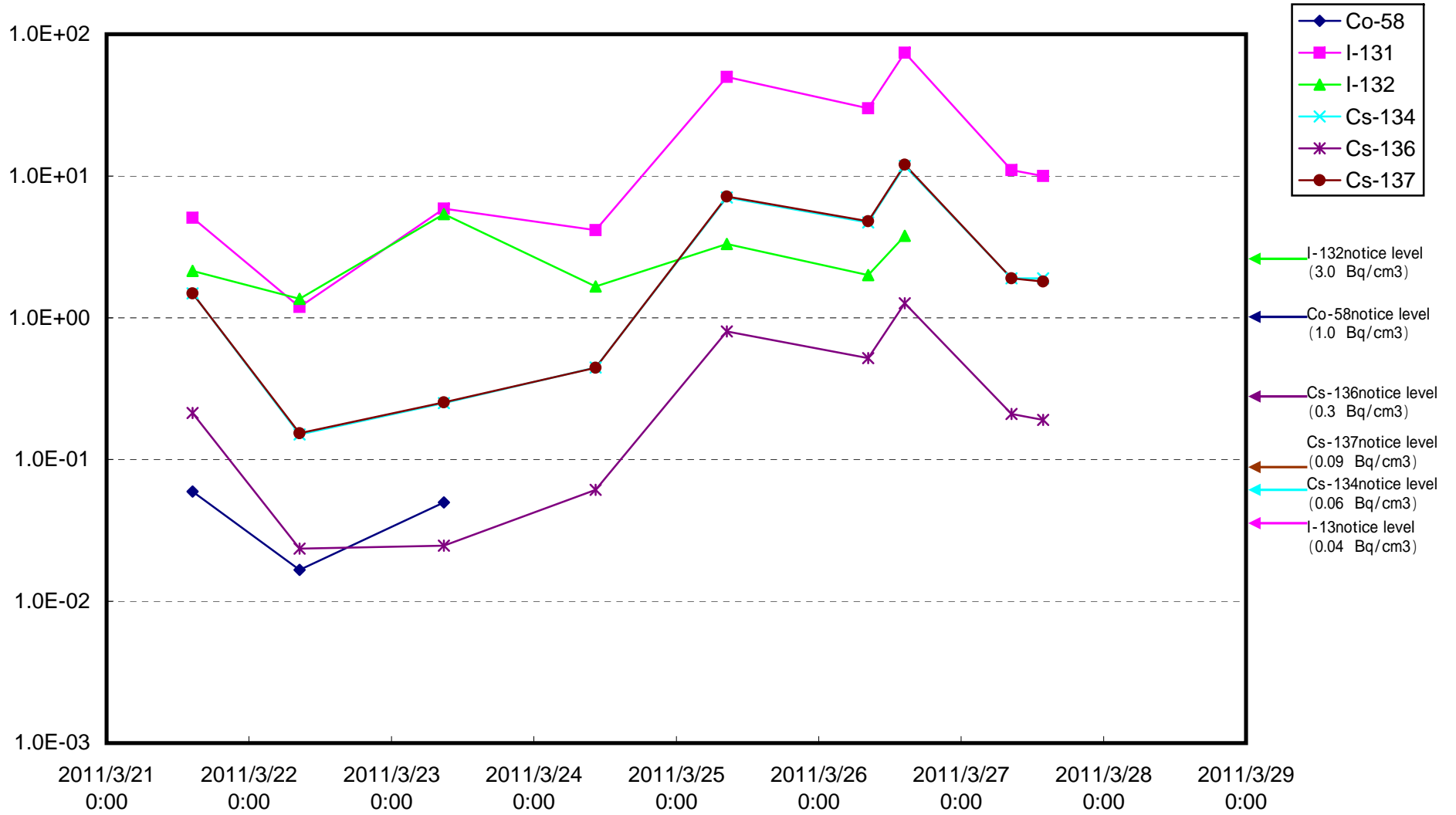
Radioactivity Density of Seawater (Bq/cm³) (H23.3.27)



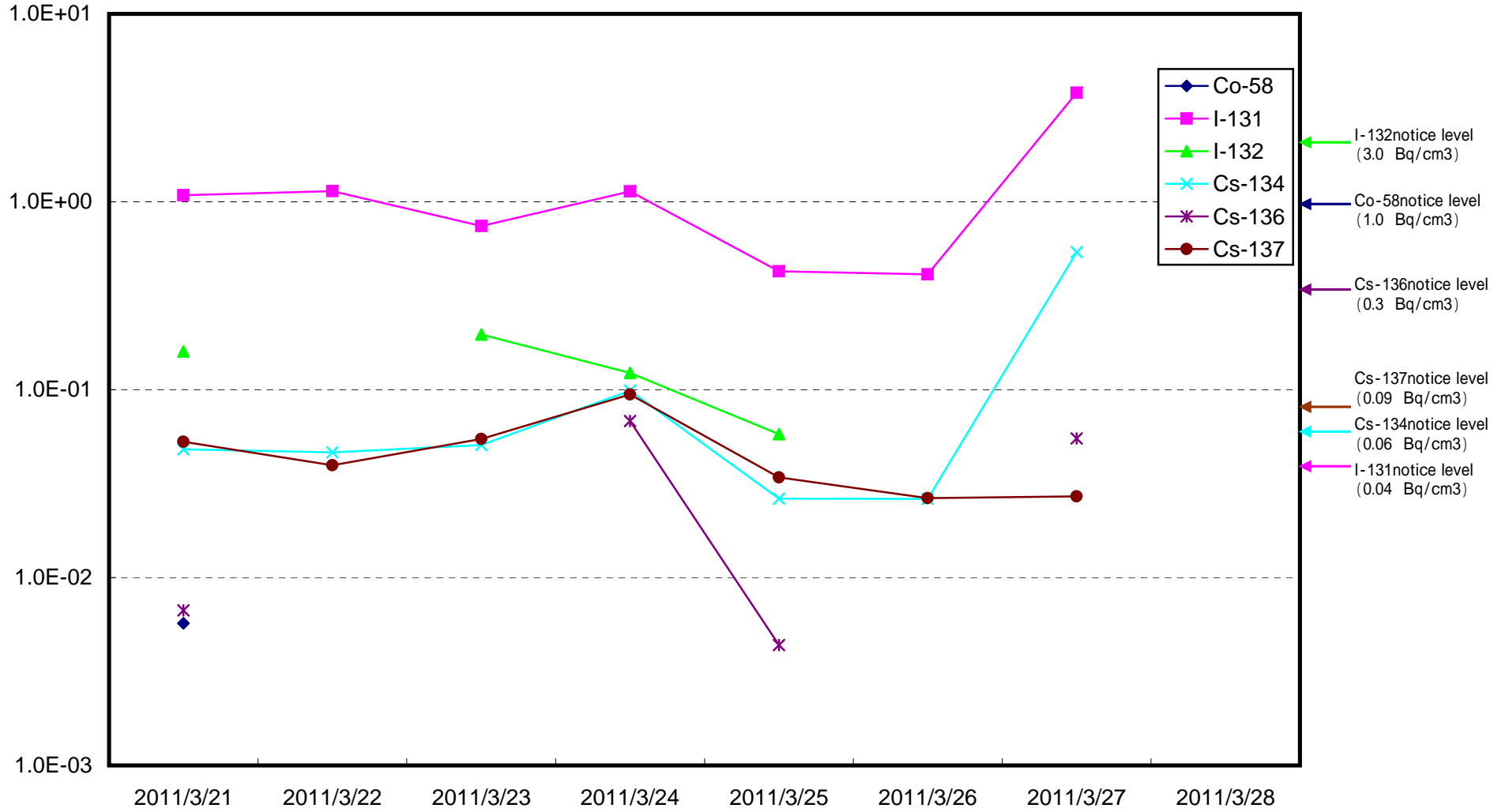
Radioactivity Density of Seawater around discharge canal (north) of Fukushima Daiichi (Bq/cm³)



Radioactivity Density of Seawater around discharge canal (south) of Fukushima Daiichi (Bq/cm³)



Radioactivity Density of Seawater around discharge canal (north) of Fukushima Daini (Bq/cm³)



Radioactivity Density of Seawater around Iwasawa Coast, Fukushima Daini (Bq/cm³)

