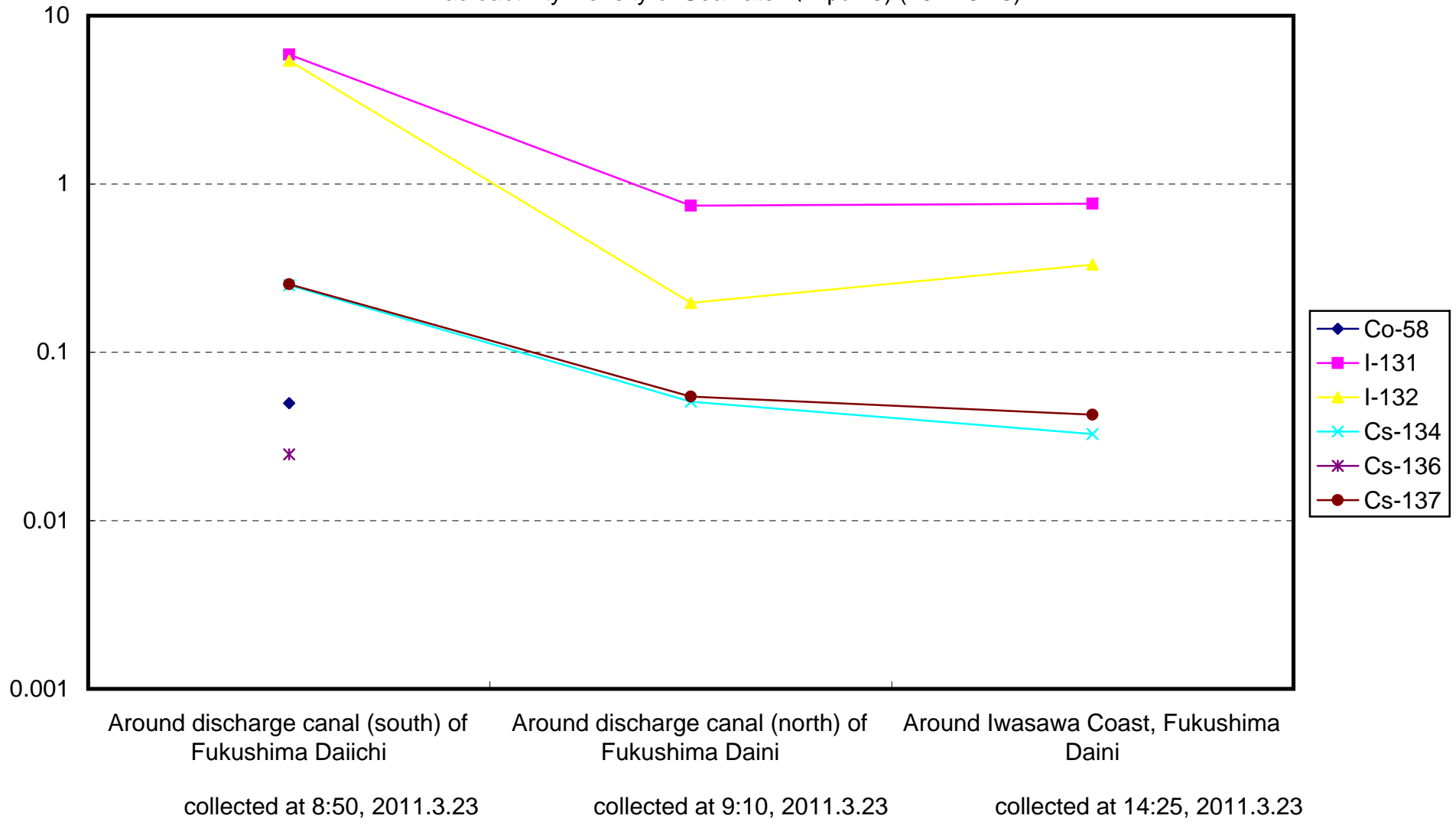
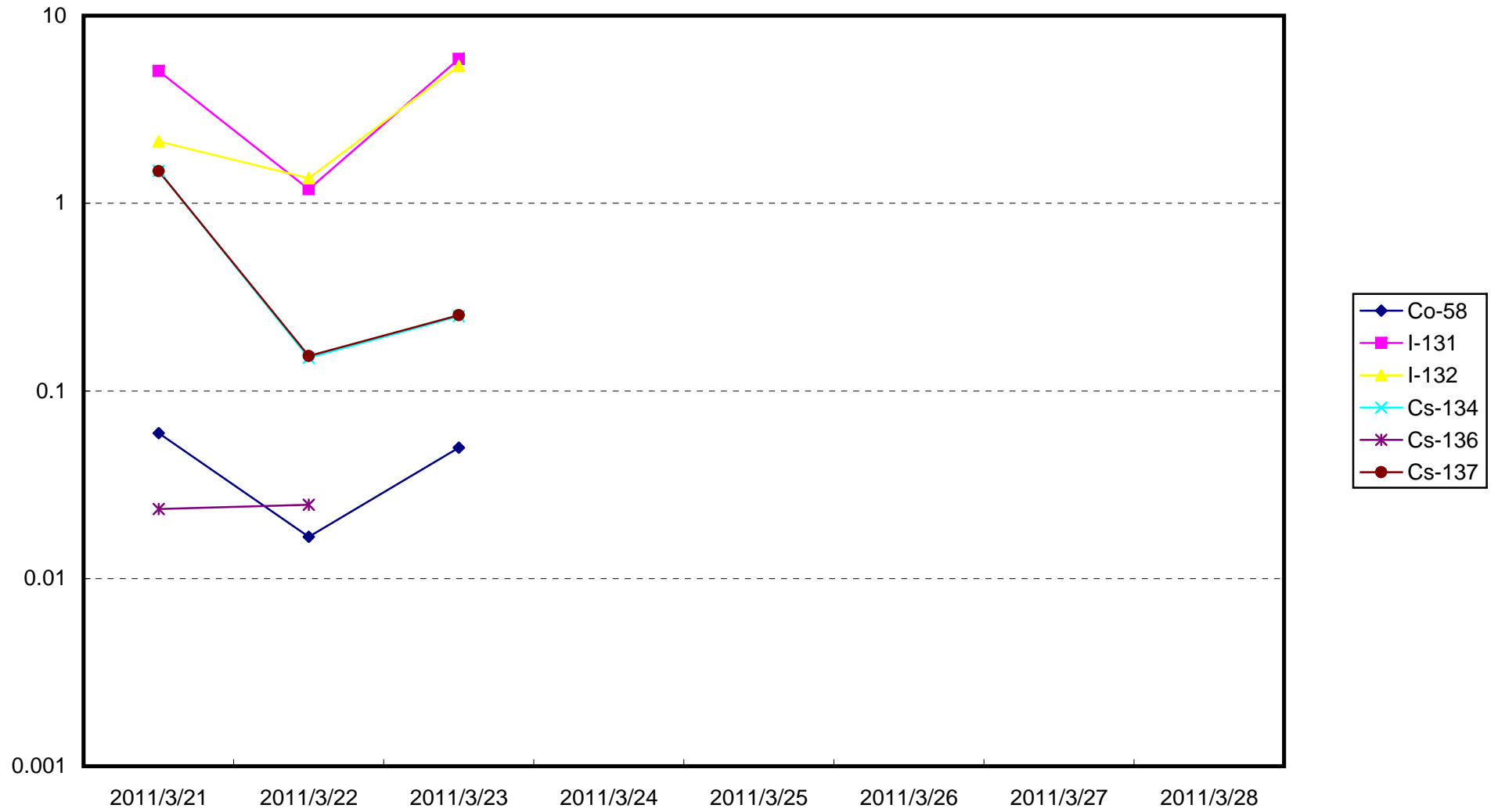


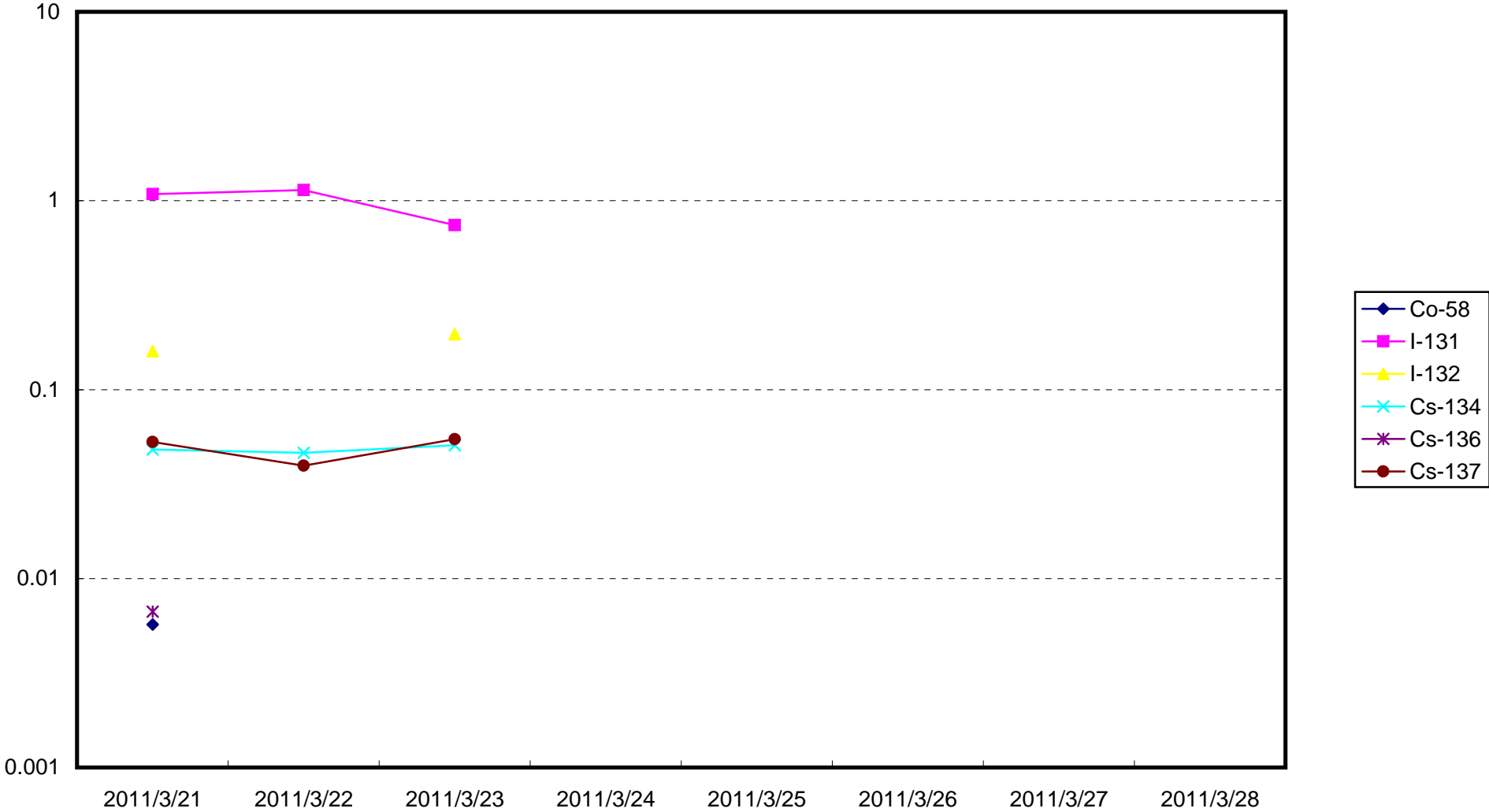
Radioactivity Density of Seawater (Bq/cm<sup>3</sup>) (2011.3.23)



Radioactivity Density of Seawater around discharge canal (south) of Fukushima Daiichi (Bq/cm<sup>3</sup>)



Radioactivity Density of Seawater around discharge canal (north) of Fukushima Daini (Bq/cm<sup>3</sup>)



Radioactivity Density of Seawater around Iwasawa Coast, Fukushima Daini (Bq/cm<sup>3</sup>)

