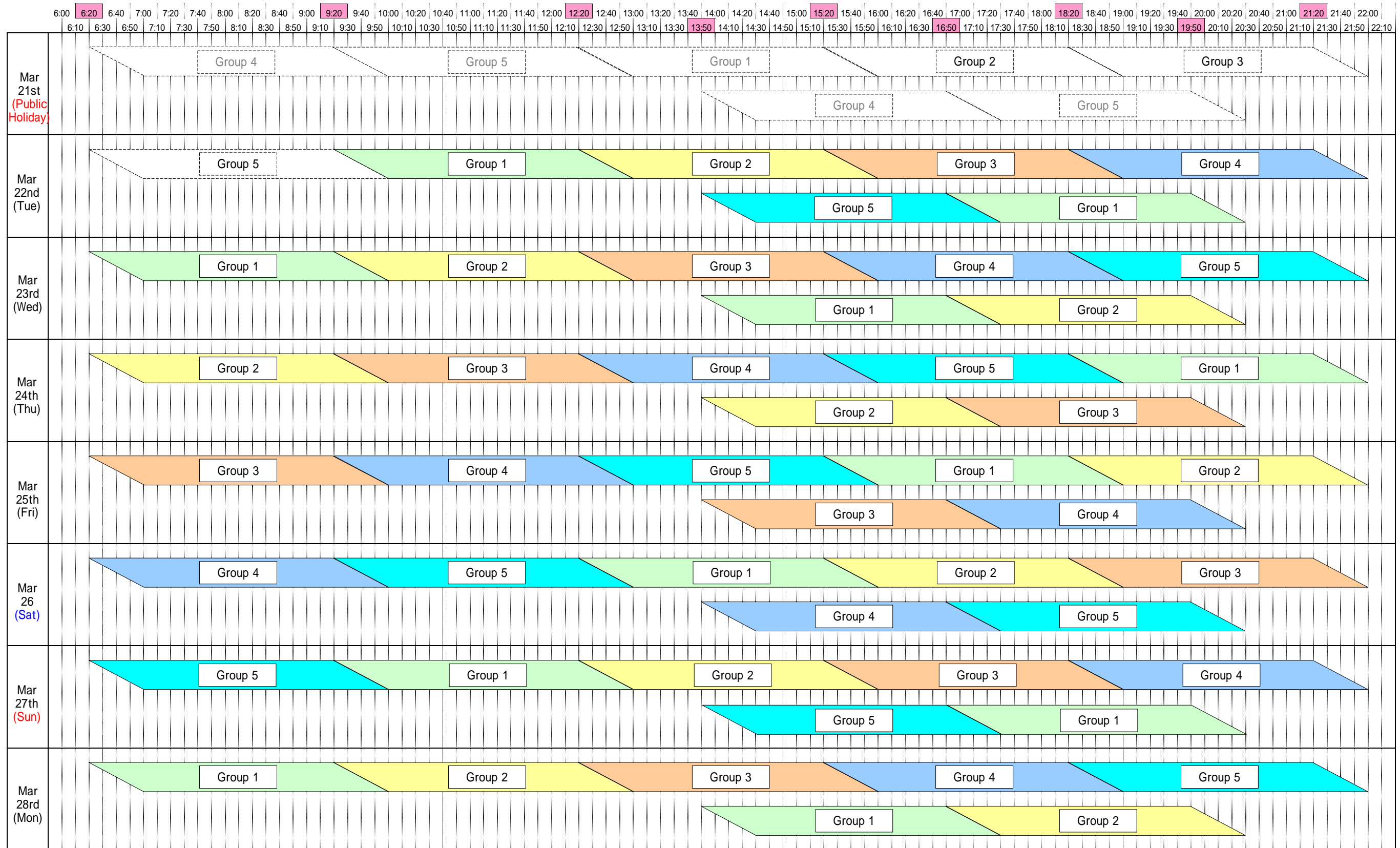


# Weekly Rolling Blackout Plan

Exhibit 2



Rolling blackout on 22th March for group 5 (13:50-17:30) and group 1(16:50-20:30) will be carried out depend on power supply-demand balance. The information will be released two hours before the implementation.

In case that the power supply-demand balance becomes critical due to increasing demand, another rolling blackout may be carried out for the blocks in the first and second period of the day during the period between 13:50 and 17:30, and the period between 16:50 and 20:30 on the same day respectively.