

Summary of Marine Soil Monitoring Result (The Ocean Area within Around 2km square, 1km offshore of Ota River)

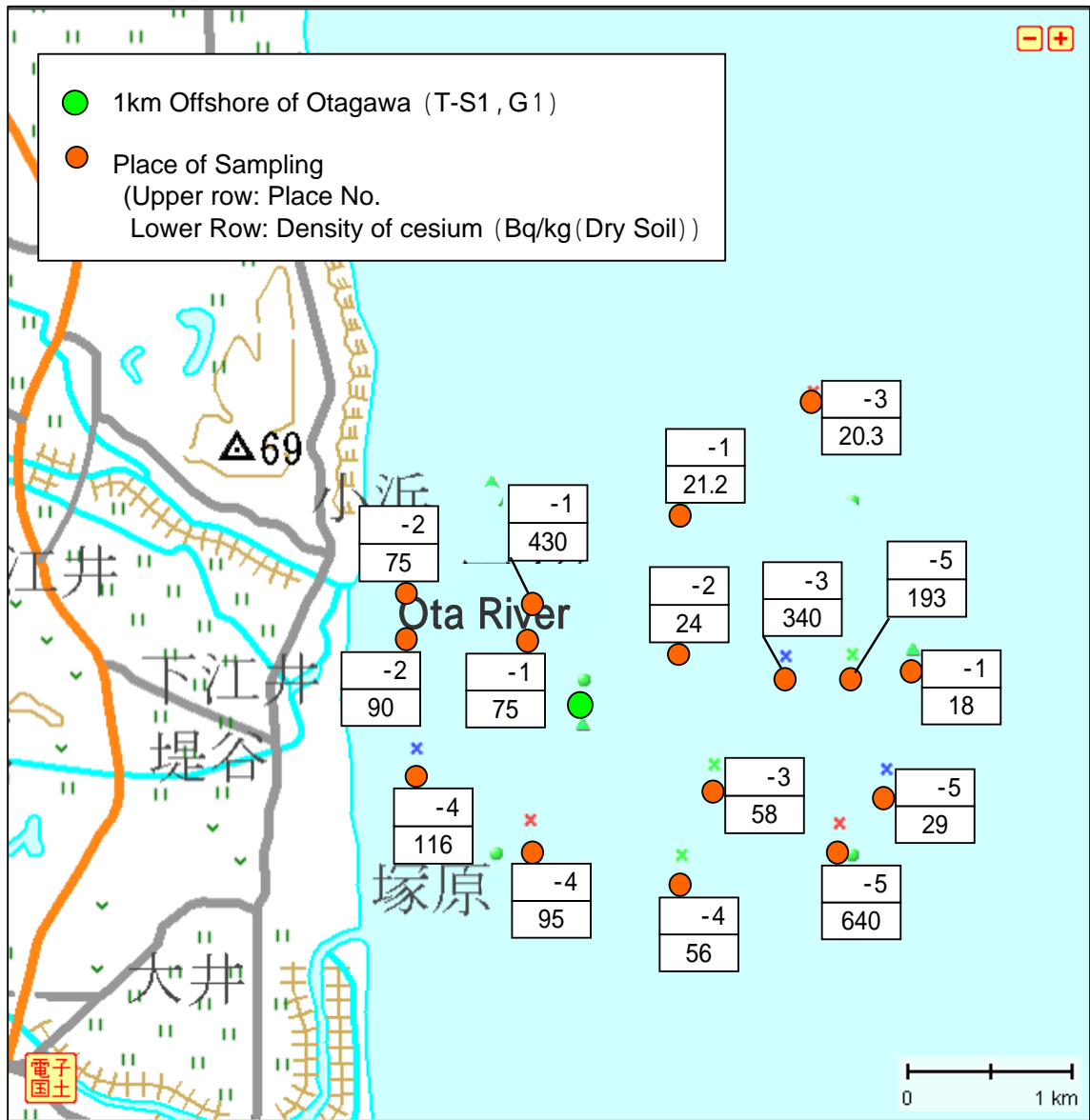
	Place No.	Place of Sampling	Date of Sampling	Dry Soil Rate (%)	Radioactivity Density (Bq/kg · Dry Soil)			
					I-131 [Approx. 8days]	Cs-134 [Approx. 2years]	Cs-137 [Approx. 30 years]	Cs-134 + Cs-137
Within 20km Range of Fukushima Daiichi NPS	T-S1 -1	Around 1km Offshore of Ota River	2012/8/29 6:25 AM	72.7	ND	170	260	430
	T-S1 -2	Around 1km Offshore of Ota River	2012/8/29 9:40 AM	73.2	ND	29	46	75
	T-S1 -3	Around 1km Offshore of Ota River	2012/8/29 8:25 AM	80.9	ND	9.3	11	20.3
	T-S1 -4	Around 1km Offshore of Ota River	2012/8/29 7:05 AM	72.1	ND	35	60	95
	T-S1 -5	Around 1km Offshore of Ota River	2012/8/29 7:40 AM	67.6	ND	240	400	640
	T-S1 -1	Around 1km Offshore of Ota River	2012/9/4 6:45 AM	74.6	ND	28	47	75
	T-S1 -2	Around 1km Offshore of Ota River	2012/9/4 7:15 AM	72.9	ND	34	56	90
	T-S1 -3	Around 1km Offshore of Ota River	2012/9/4 8:55 AM	67.8	ND	120	220	340
	T-S1 -4	Around 1km Offshore of Ota River	2012/9/4 7:30 AM	68.1	ND	46	70	116
	T-S1 -5	Around 1km Offshore of Ota River	2012/9/4 8:10 AM	81.9	ND	12	17	29
	T-S1 -1	Around 1km Offshore of Ota River	2012/9/11 9:25 AM	77.0	ND	8.2	13	21.2
	T-S1 -2	Around 1km Offshore of Ota River	2012/9/11 6:45 AM	75.2	ND	11	13	24
	T-S1 -3	Around 1km Offshore of Ota River	2012/9/11 7:18 AM	72.3	ND	22	36	58
	T-S1 -4	Around 1km Offshore of Ota River	2012/9/11 8:07 AM	73.6	ND	19	37	56
	T-S1 -5	Around 1km Offshore of Ota River	2012/9/11 8:40 AM	72.8	ND	73	120	193
	T-S1 -1	Around 1km Offshore of Ota River	2012/10/10 6:45 AM	80.4	ND	6.0	12	18

* Data of other nuclides is under evaluation.

* "ND" indicates that the measurement result is below the detection limit. I-131: Approx. 9Bq/kg · Dry Soil)

As the detection limit may vary depending on the detectors and sample properties, there are cases where nuclides below the detection limit are detected.

* The half-life of each nuclide is provided in parentheses.



Marine Soil Monitoring Result
 (The Ocean Area within Around 2km square, 1km offshore of Ota River)