

# Investigation of the Inside of Unit 1 PCV at Fukushima Daiichi Nuclear Power Station (October 12 ~ 13)

<Reference>  
October 15, 2012  
Tokyo Electric Power Company

## Collect samples of accumulated water (October 12)

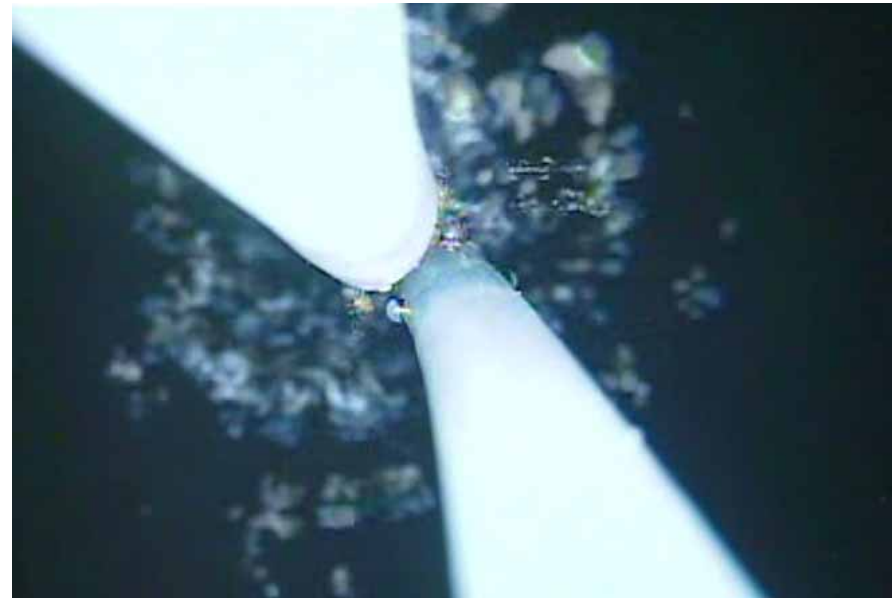
[Collect samples of accumulated water]

Number of workers involved: 51

Time: From around 10:00AM to around 0:45PM



1. Reached water surface



2. Collecting samples

Photos taken on October 12, 2012 by TEPCO

## (Reference) Pictures at the site

---



3. the permanent monitoring system  
(sealed box)



4. Collecting samples work

Photos taken on October 12, 13, 2012 by TEPCO

## (Reference) Transfer samples to radiation shield case

---



5. Radiation shield case



6. Transfer samples to radiation shield case

Photos taken on October 12, 2012 by TEPCO

## Install the permanent monitoring instrument (October 13)

---

[Install the permanent monitoring instrument]

Number of workers involved: 50

Time: From around 9:00AM to around 1:30PM



7.Reached water surface



8.Installed(underwater)

Photos taken on October 13, 2012 by TEPCO