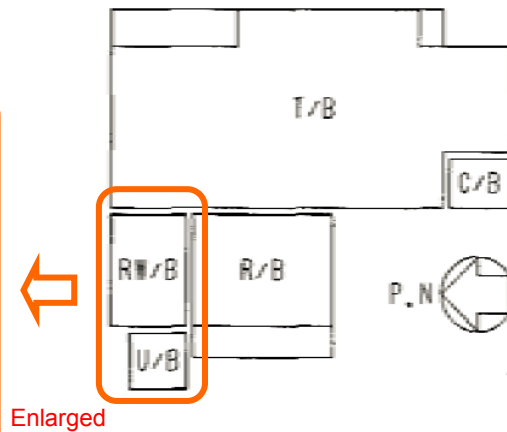
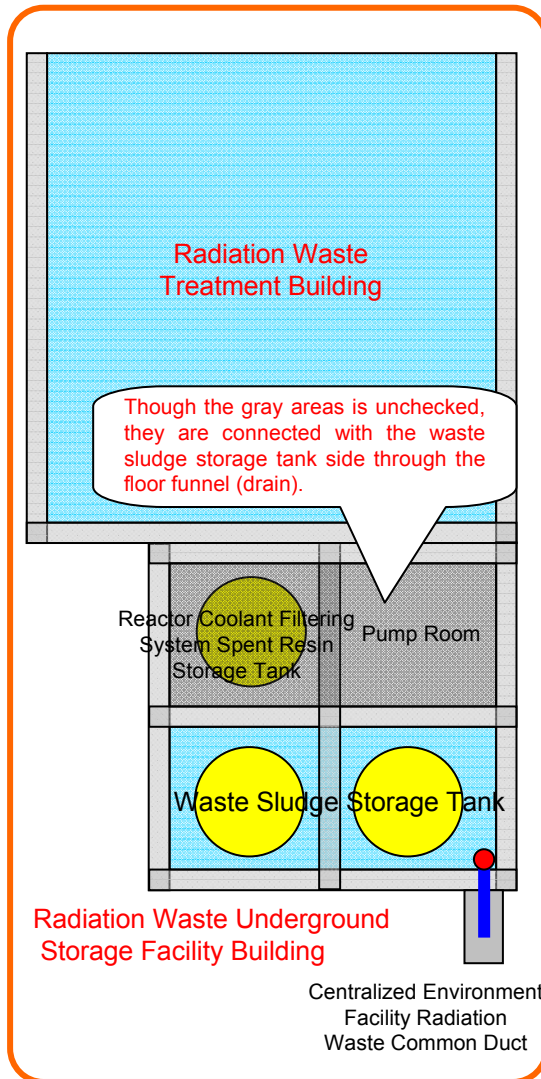
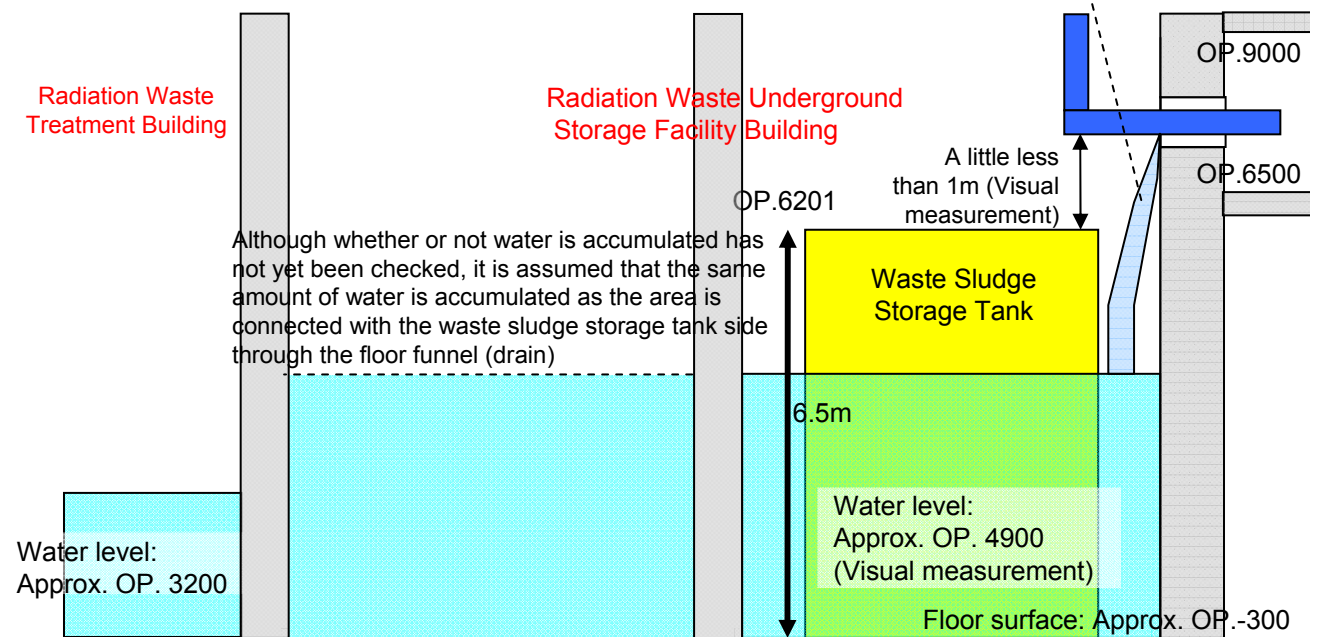


Report on the Accumulated Water Found at Unit 3 Radiation Waste Underground Storage Facility Building At Fukushima Daiichi Nuclear Power Station

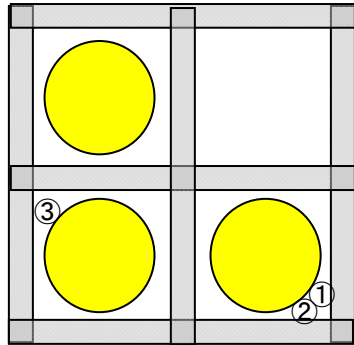
May 26, 2012
Tokyo Electric Power Company



Cross Section



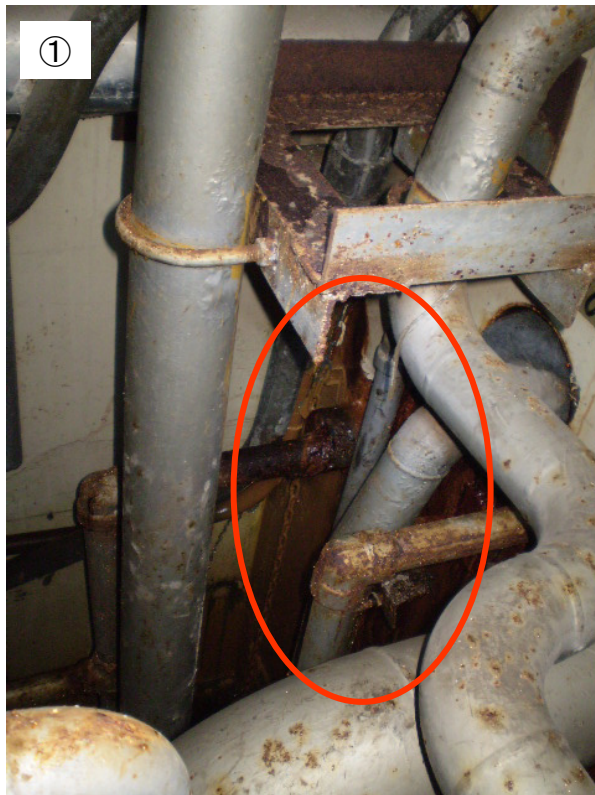
Accumulated water amount is approx. 610m³ in the entire building (including the unchecked areas). The property of the accumulated water is assumed to be either groundwater or rainwater.



Photos were taken at spots ①, ② and ③.



The location where the water inflow was confirmed



The location where the water inflow was traced



Water level