

Preliminary survey in Torus Room of Units 2 and 3, Fukushima Daiichi NPS

March 13, 2012

Tokyo Electric Power Company

Works Conducted

(1) Timeline

March 14 12:04 Enter into R/B of Unit 2
12:24 Exit from R/B of Unit 2
12:40 Enter into R/B of Unit 3
12:48 Exit from R/B of Unit 2

(2) Workers at Site

6 TEPCO employees

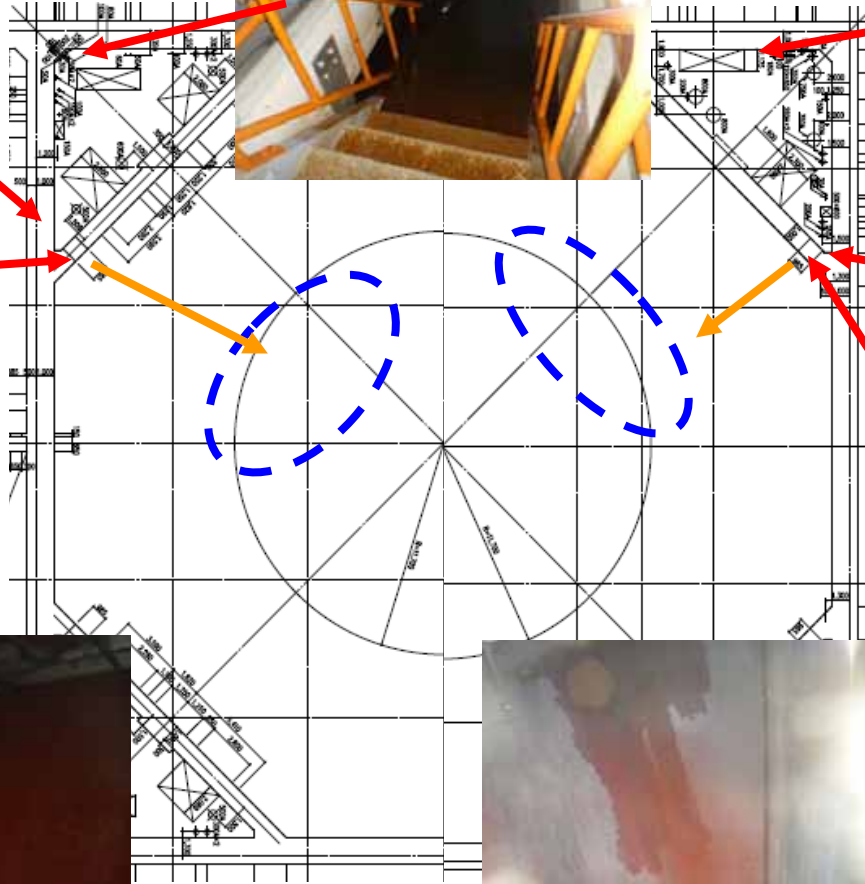
(3) Radiation Exposure During the Work

Max. 2.87 mSv (planned: 10mSv) Min. 0.67 mSv

(4) Spatial Radiation Dose in the Building

Unit [mSv/h]	U2 NW	U2 NE	U3 NE
Floor of Middle Basement	20 ~ 30	15 ~ 30	15 ~ 20
In Front of Door to Torus Room	20 ~ 35	20	50 ~ 75
Inside Torus Room	130 ~ 160	100 ~ 130	unmeasurable
Surface of Accumulated Water	150 ~ 160	150	140

Places Surveyed (U2 Torus)



Torus seen from the direction (NW Side)

Torus seen from the direction (NE Side)

Places Surveyed (U3 Torus)

