

<Reference>

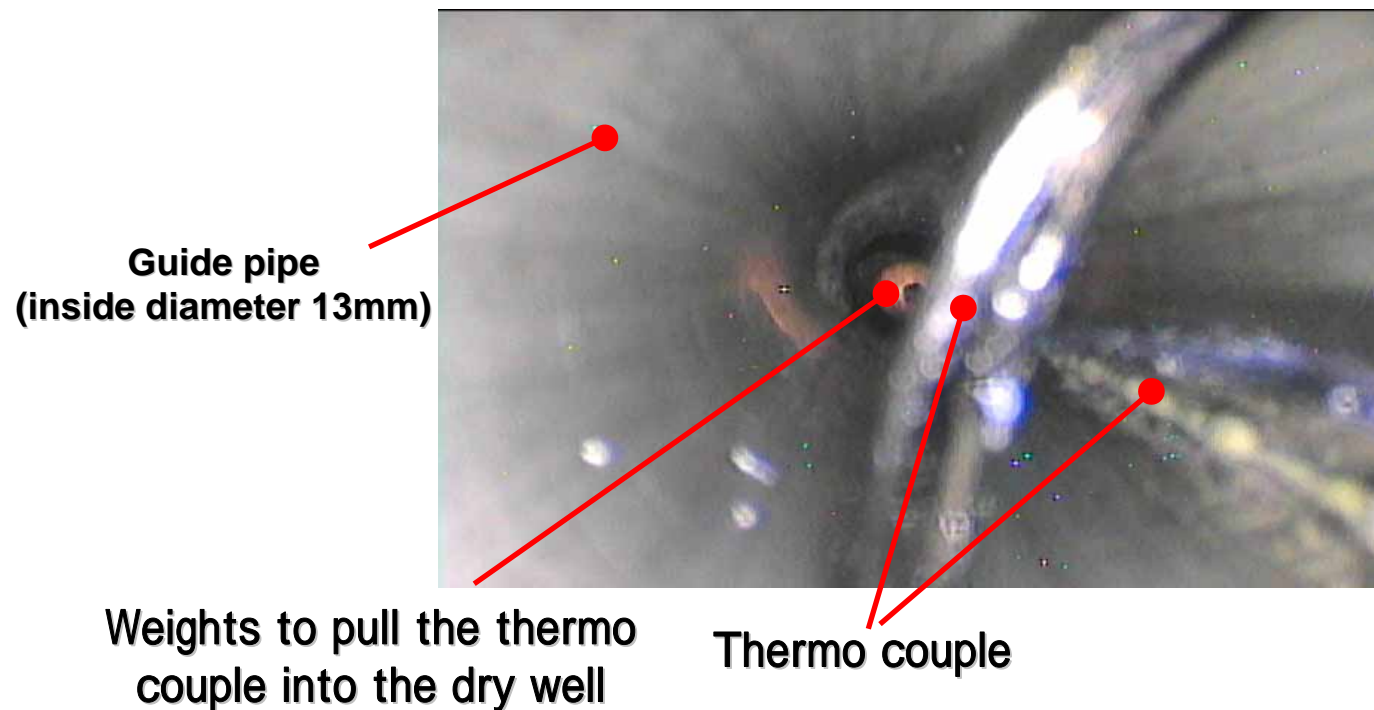
January 19, 2012

Tokyo Electric Power Company

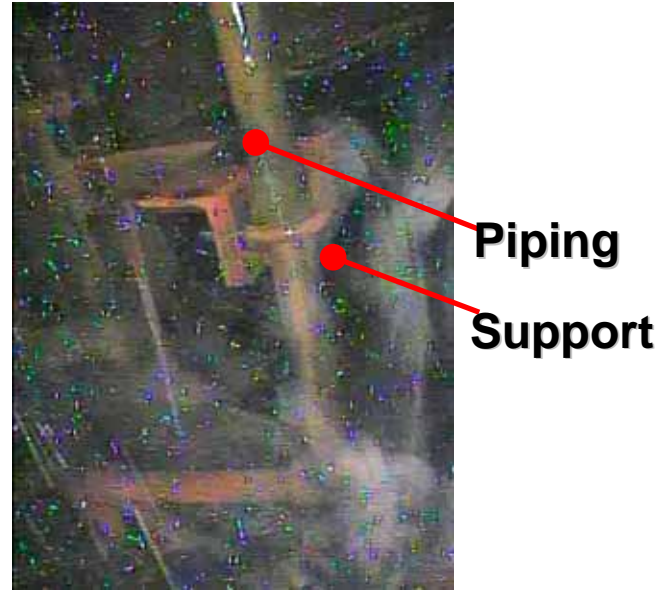
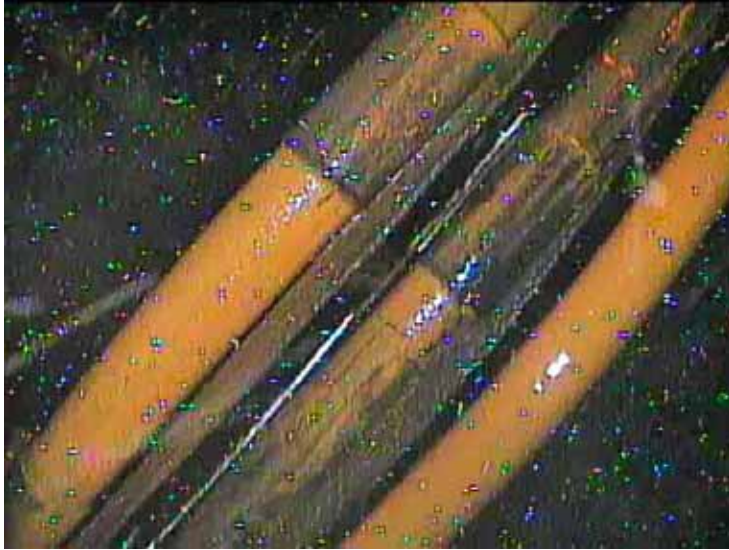
Investigation inside of Primary Containment Vessel, Unit 2, Fukushima Daiichi NPS

Taken on: January 19, 2012

Photos by: TEPCO



Inside the guide pipe located in X-53
penetration
(Before the borescope enters the PCV)



Structures assumed to be small size piping or
cable conduit

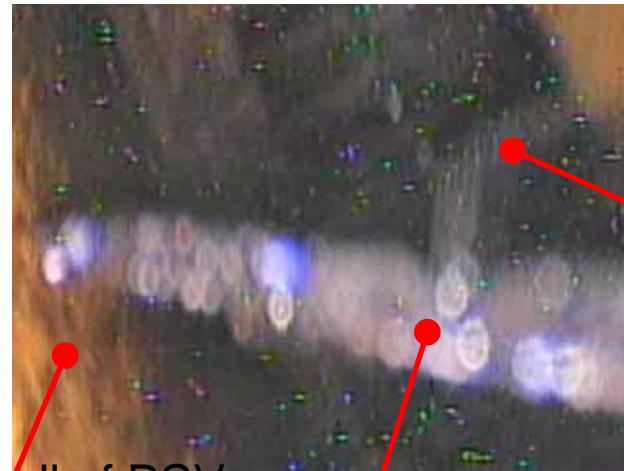


Internal wall of PCV



Internal wall of PCV

Grating
(OP . 9500)



Internal wall of PCV

Thermo couple

Grating
(OP . 9500)

Around the grating, 1FL, Dry well



Structures assumed to be piping

Looking up from X-53 penetration