

## Transfer of the low level accumulated water to Megafloat

■ Low level accumulated water from Unit 5 and 6, Fukushima Daiichi Nuclear Power Station that has been stored in outdoor temporary tank is planned to be transferred to Megafloat provided by Shizuoka City from 1:00 pm on June 30.

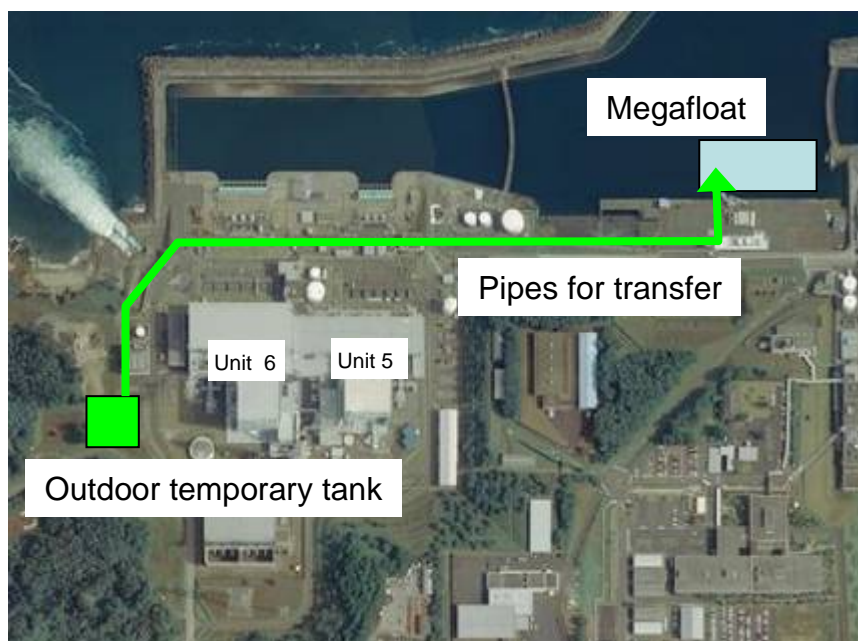
■ Approx. 8,000m<sup>3</sup> of low level accumulated water will be transferred to Megafloat in the next 3-4 months.

### ■ Specification of Megafloat

Length : 136m、Width : 46m、Height : 3 m

Area : Approx. 6,200m<sup>2</sup>

Storage capacity : Approx. 10,000m<sup>3</sup>



Overview of the transfer route



Megafloat tied up to around Shallow Draft Quay  
(Back of the picture)



Megafloat tied up to around Shallow Draft Quay  
(Front of the picture)

Date : Around 3 pm, June 25, 2011

Photo : Tokyo Electric Power Company