

# Water level measurement in the drain sump pit of Units 1-2 exhaust stack at Fukushima Daiichi Nuclear Power Station

Reference  
September 9, 2016  
Tokyo Electric Power Company Holdings, Inc.

## Summary

### ○Date and Time

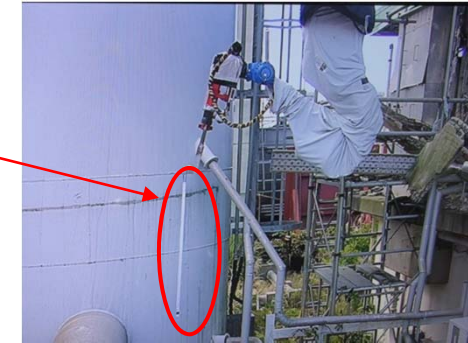
September 9, 2016 from 9:30 a.m. to 10 a.m.

### ○Measurement results

Water was found inside the pit.

(Water level: approx. 60cm, Shape: approx. 1m×1m×1m)

Water gauge



Water level measurement



Measurement results (Approx. 60cm)

Photos taken by: Tokyo Electric Power Company Holdings, Inc.

Photos taken on: September 9, 2016