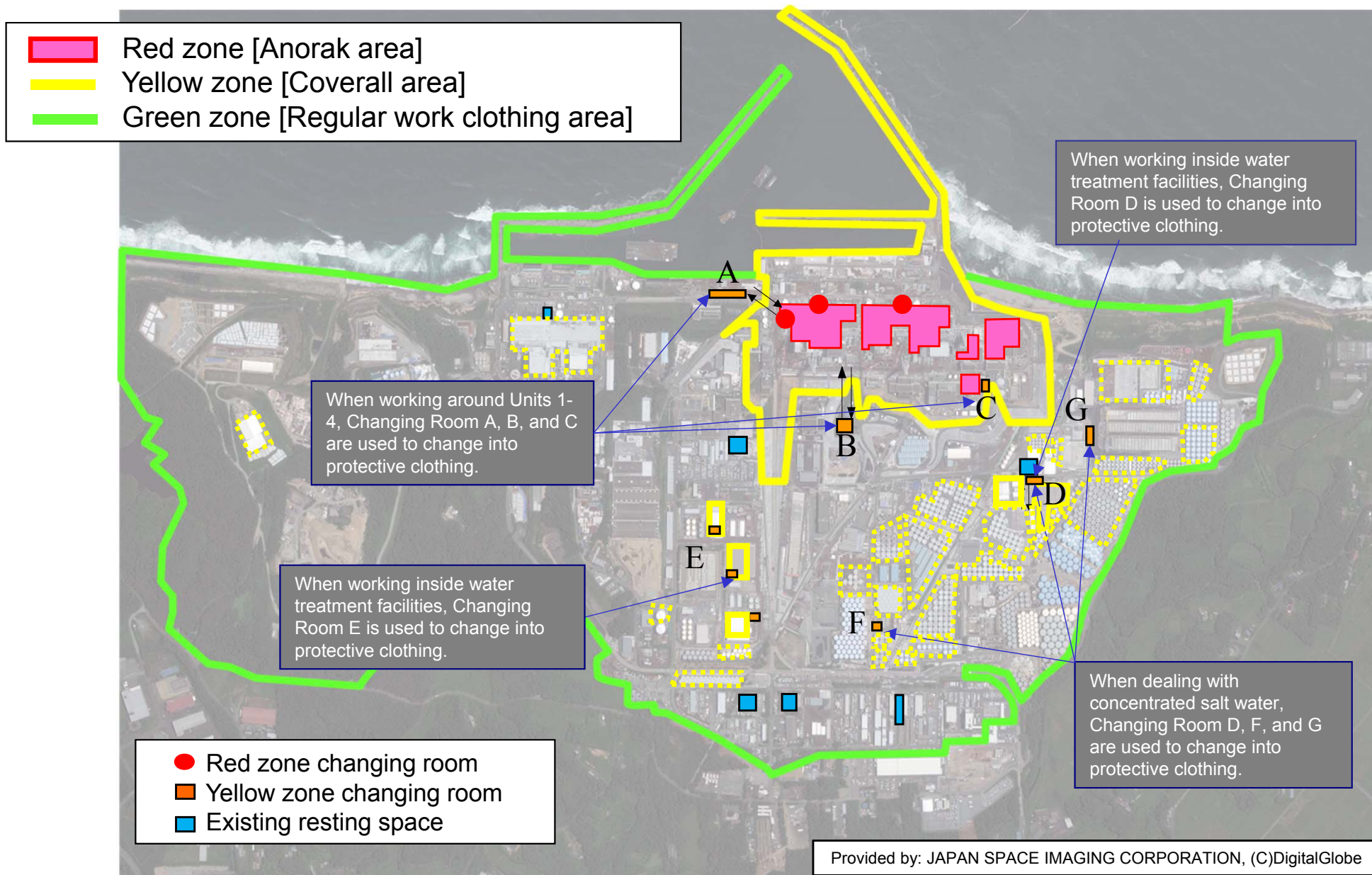


# Rezoning of Radiation Protection Areas and the Location of Changing Rooms



\*Yellow zone will be temporarily set when working with highly concentrated dust, such as demolition of buildings, or dealing with concentrated salt water in Green zone.  
\*Yellow zone is set in the areas outlined with yellow dotted lines for the work associated with contamination, such as dealing with concentrated salt water and water transfer lines.  
Regular work clothing for Green zone is applied to patrol and onsite survey for work planning in these areas.