

Completion of Placing Steel Pipe Sheet-Piles for Seaside Impermeable Wall Closure

For Reference
September 24, 2015
Tokyo Electric Power Company

Before the Placement



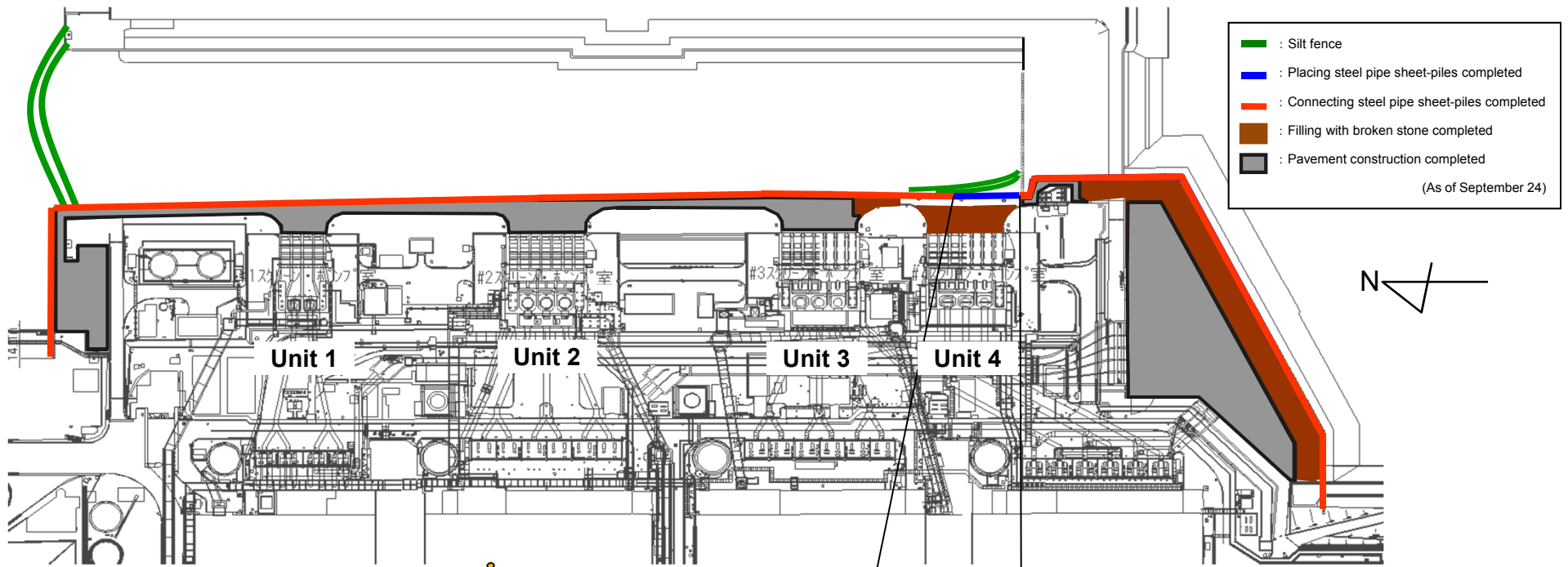
Photo taken on September 10, 2015

After the Placement



Photo taken on September 24, 2015

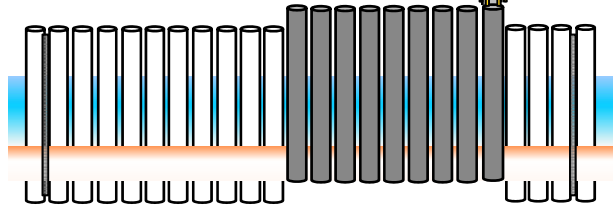
For Reference: Completion of Placing Steel Pipe Sheet-Piles for Seaside Impermeable Wall Closure



1, Placing steel pipe sheet-piles (1st step)

Placing to within 1.5m of the planned depth (vibratory hammer)

Placing order

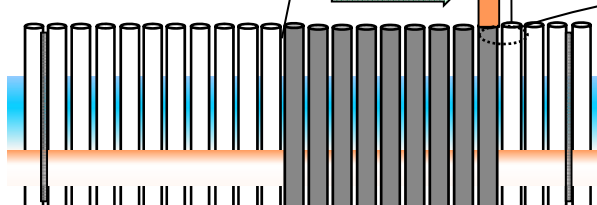


9 steel pipe sheet-piles placed after resuming the operation on September 10

2, Placing steel pipe sheet-piles (2st step)

Placing up to planned depth (hydraulic hammer)

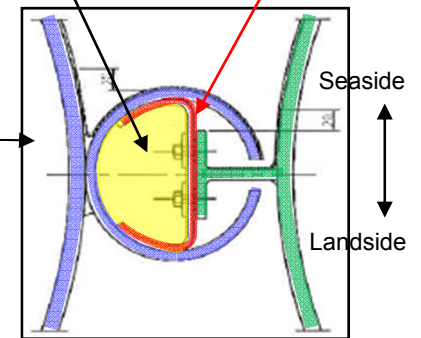
Placing order



Completion of placing steel pipe sheet-piles on September 22

Injecting non-shrinkage mortar Water shielding rubber

Enlargement of connecting point



Each sheet-pile will be connected to improve water shutoff. (Closing operation is planned to complete in the end of October.)