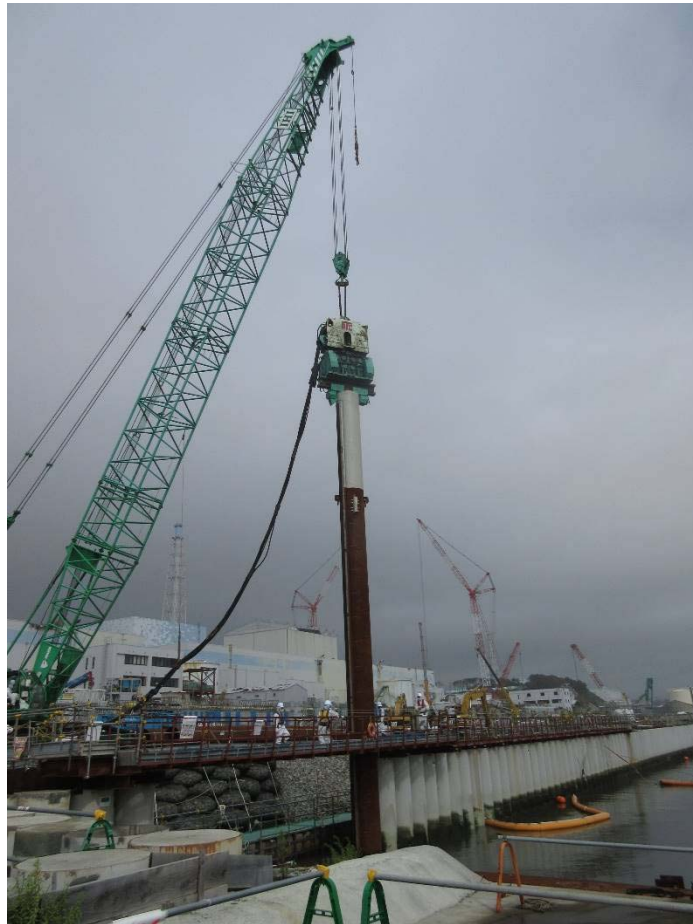


Closing Operation of the Seaside Impermeable Wall at Fukushima Daiichi Nuclear Power Station

For Reference
September 10, 2015
Tokyo Electric Power Company

<Before the Operation>



<After the Operation>

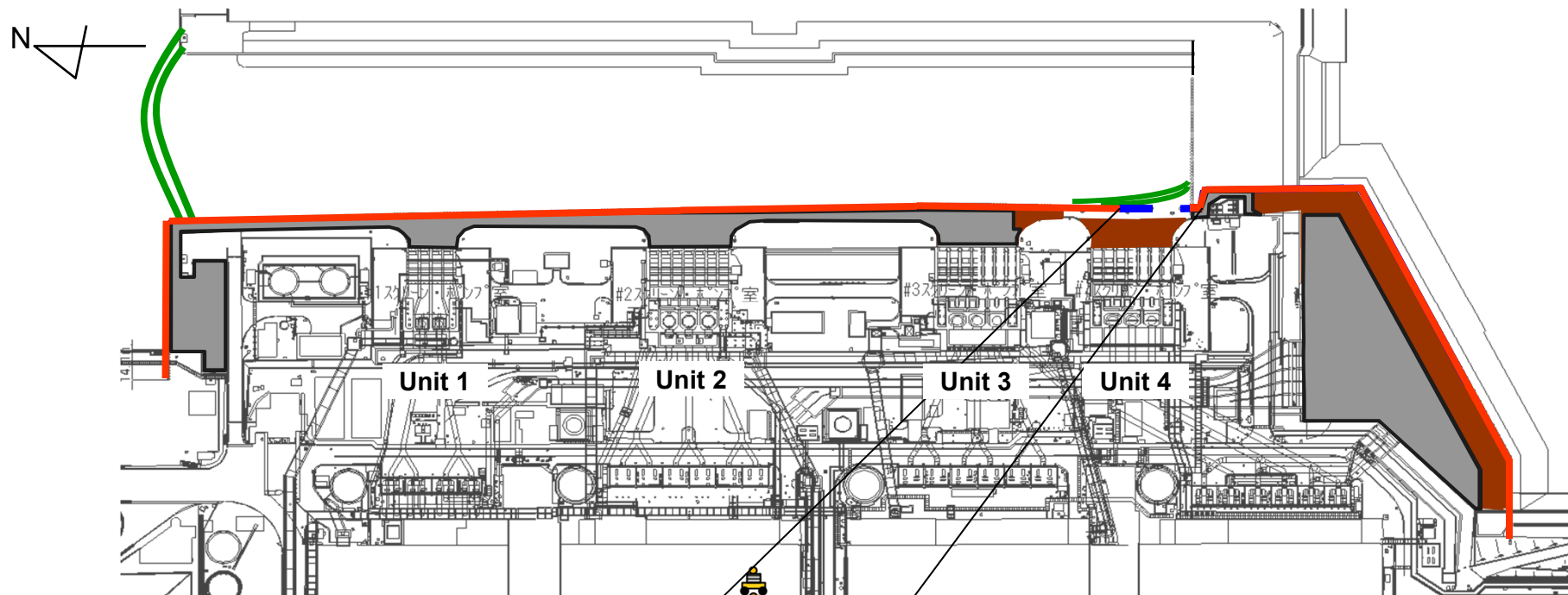


<Steel Pipe Sheet-Piles>



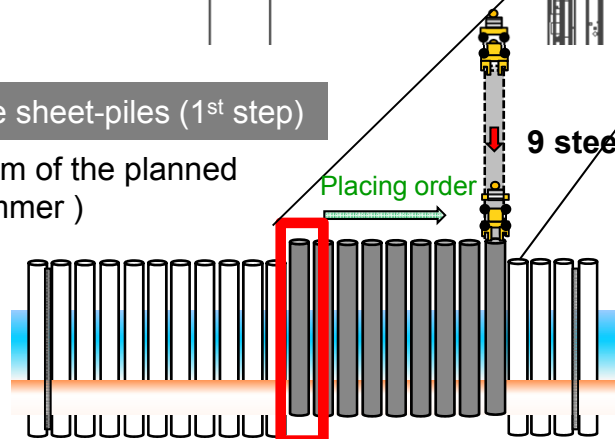
Photos taken on September 10, 2015
Photos taken by Tokyo Electric Power Company

For reference: Closing Operation of the Seaside Impermeable Wall at Fukushima Daiichi Nuclear Power Station



1, Placing steel pipe sheet-piles (1st step)






Placing to within 1.5m of the planned depth (vibratory hammer)



The steel pipe sheet-piles placed on September 10

Seaside impermeable wall closing point:

9 steel pipe sheet-piles to be placed (approx. 10m extension)

	: Silt fence
	: Placing steel pipe sheet-piles completed
	: Connecting steel pipe sheet-piles completed
	: Filling with broken stone completed
	: Pavement construction completed

(As of September 9)