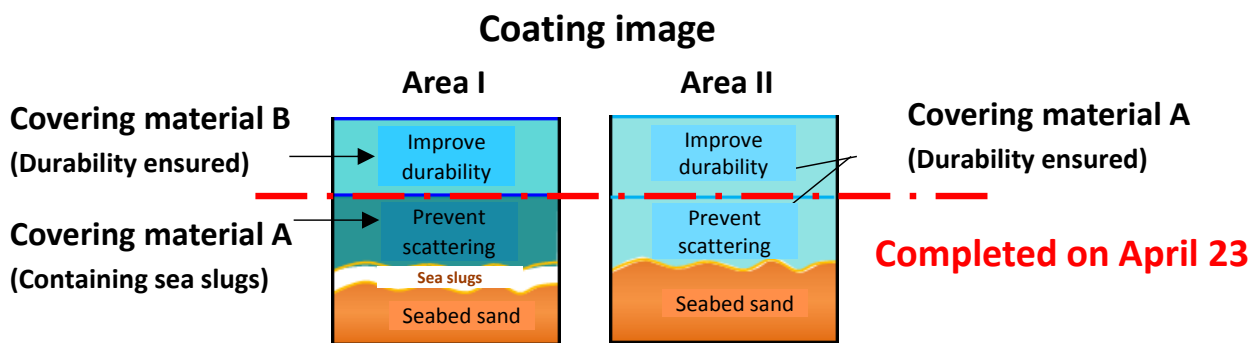


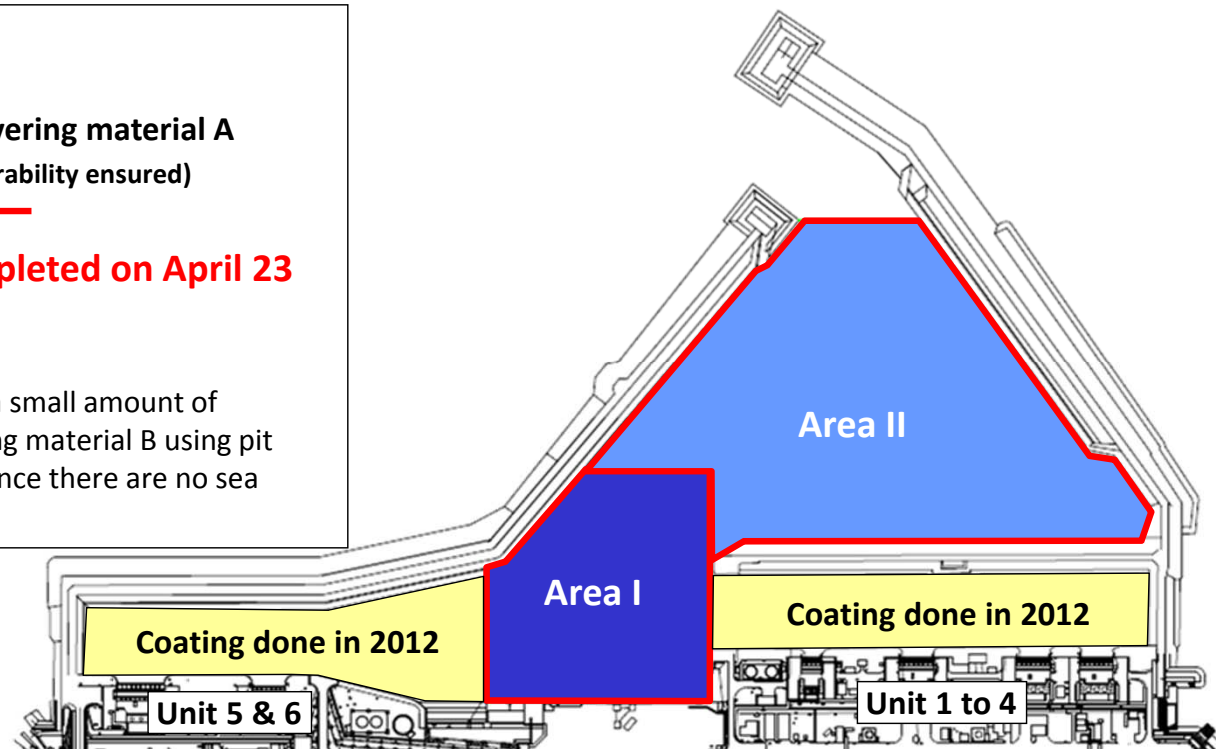
# Completion status of seabed coating work inside the port at Fukushima Daiichi Nuclear Power Station

<Reference>  
 April 23, 2015  
 Tokyo Electric Power Company



\* For Area I, in order to contain sea slugs sitting on the sea floor, firstly a small amount of Covering material A using bentonite slurry was applied, and then Covering material B using pit sand slurry was coated over so as to improve durability. As for Area II, since there are no sea slugs exist, only Covering material B was applied.

The thickness of the coating is planned to be checked through bathymetry. And based on the data taken, additional coating will be performed to strengthen durability if necessary.



Construction area	Area (m <sup>2</sup> )	Amount of concrete (m <sup>3</sup> )	Start date	Completion date
Area I	50,900	10,700	2014.07.17	2014.10.03
Area II	129,700	21,800	2014.12.14	2015.04.23
Total	180,600	32,500	2014.07.17	2015.04.23

The figure shown at the "Amount of concrete" is provisional and is subjected to change.

<Reference> Area with the coating done in front of the water intake.

(On the side of Unit 1 to 4) Coating area: Approx. 34,000m<sup>2</sup>/ Construction period: 2012.3.14 to 5.11.

(On the side of Unit 5 & 6) Coating area: Approx. 38,600m<sup>2</sup> / Construction period: 2012.5.16 to 7.05.

\* Open ditch of water intake has sea slugs, therefore, covering material with bentonite slurry was applied to make it duplex coating.